

# **EXTRACTION OIL & GAS**

**Weld County  
Sec 7-T4N-R68W  
TROT 8E-10-9N**

**ORIGINAL WELLBORE**

**Plan: PROPOSAL 1**

## **Standard Planning Report**

**23 May, 2017**



WELL DETAILS: TROTT 8E-10-9N

+N/-S	+E/-W	Northing	Easting	5034.0	Latitude	Longitude	Slot
0.0	0.0	1361363.17	3127939.98	40° 19' 27.962 N	105° 2' 28.093 W		

SECTION DETAILS

Sec	MD	Inc	Azi	TVD	+N/-S	+E/-W	Dleg	TFace	VSec	Target
1	0.0	0.00	0.00	0.0	0.0	0.0	0.00	0.00	0.0	
2	300.0	0.00	0.00	300.0	0.0	0.0	0.00	0.00	0.0	
3	770.2	9.40	293.03	768.1	15.1	-35.4	2.00	293.03	-34.3	
4	4835.7	9.40	293.03	4778.9	274.9	-646.8	0.00	0.00	-625.6	
5	5305.9	0.00	0.00	5247.0	290.0	-682.2	2.00	180.00	-659.9	
6	5405.9	0.00	0.00	5347.0	290.0	-682.2	0.00	0.00	-659.9	
7	6305.9	90.00	88.86	5920.0	301.4	-109.3	10.00	88.86	-87.7	
8	7670.7	90.00	88.86	5920.0	328.6	1255.2	0.00	0.00	1275.4	
9	12464.7	90.00	88.72	5920.0	429.9	6048.1	0.00	-90.00	6063.3	

ANNOTATIONS

MD	Inc	Azi	TVD	+N/-S	+E/-W	VSec	Departure	Annotation
300.0	0.00	0.00	300.0	0.0	0.0	0.0	0.0	BUILD 2"/100'
770.2	9.40	293.03	768.1	15.1	-35.4	-34.3	38.5	HOLD 9.40° INC
4835.7	9.40	293.03	4778.9	274.9	-646.8	-625.6	702.8	DROP 2"/100'
5305.9	0.00	0.00	5247.0	290.0	-682.2	-659.9	741.3	HOLD VERTICAL
5405.9	0.00	0.00	5347.0	290.0	-682.2	-659.9	741.3	KOP, BUILD 10"/100'
6305.9	90.00	88.86	5920.0	301.4	-109.3	-87.7	1314.3	LP @ 90° INC
7670.7	90.00	88.86	5920.0	328.6	1255.2	1275.4	2679.1	HOLD
12464.7	90.00	88.72	5920.0	429.9	6048.1	6063.3	7473.0	TD at 12464.7' MD

DESIGN TARGET DETAILS

Name	TVD	+N/-S	+E/-W	Northing	Easting	40° 19'	Latitude	105° 2'	Longitude	Shape
TROTT 9 - LP REV 2	5920.0	328.6	1255.2	1361698.29	3129193.49	40° 19'	31.210 N	105° 2'	11.886 W	Point
- plan hits target center										
TROTT 9 - PBHL REV 2	5920.0	429.9	6048.1	1361824.34	3133985.75	40° 19'	32.203 N	105° 1'	10.002 W	Point
- plan hits target center										

FORMATION TOP DETAILS

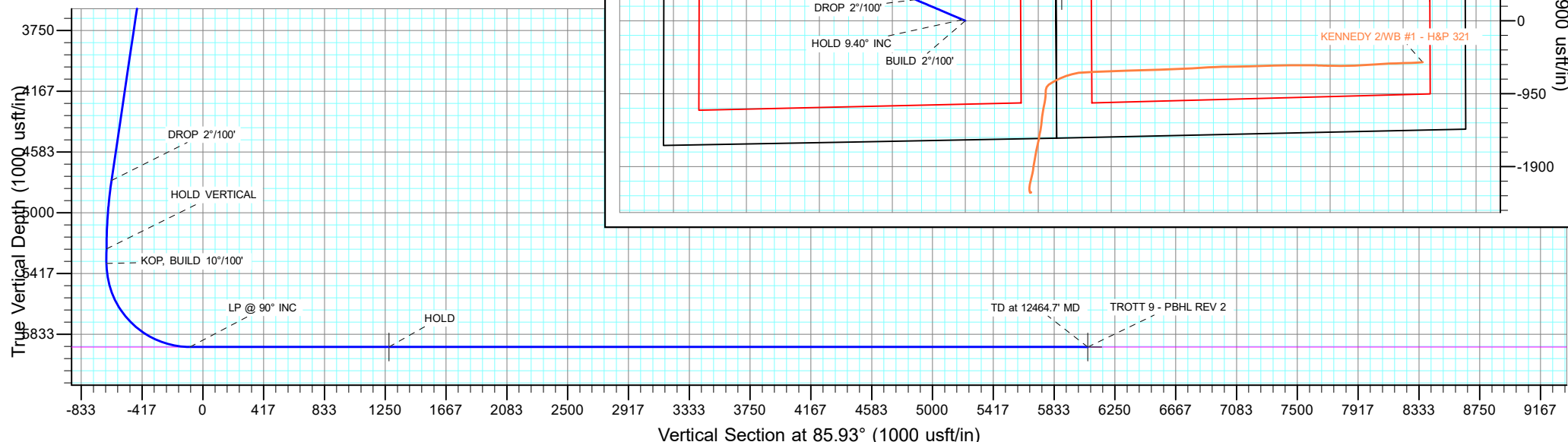
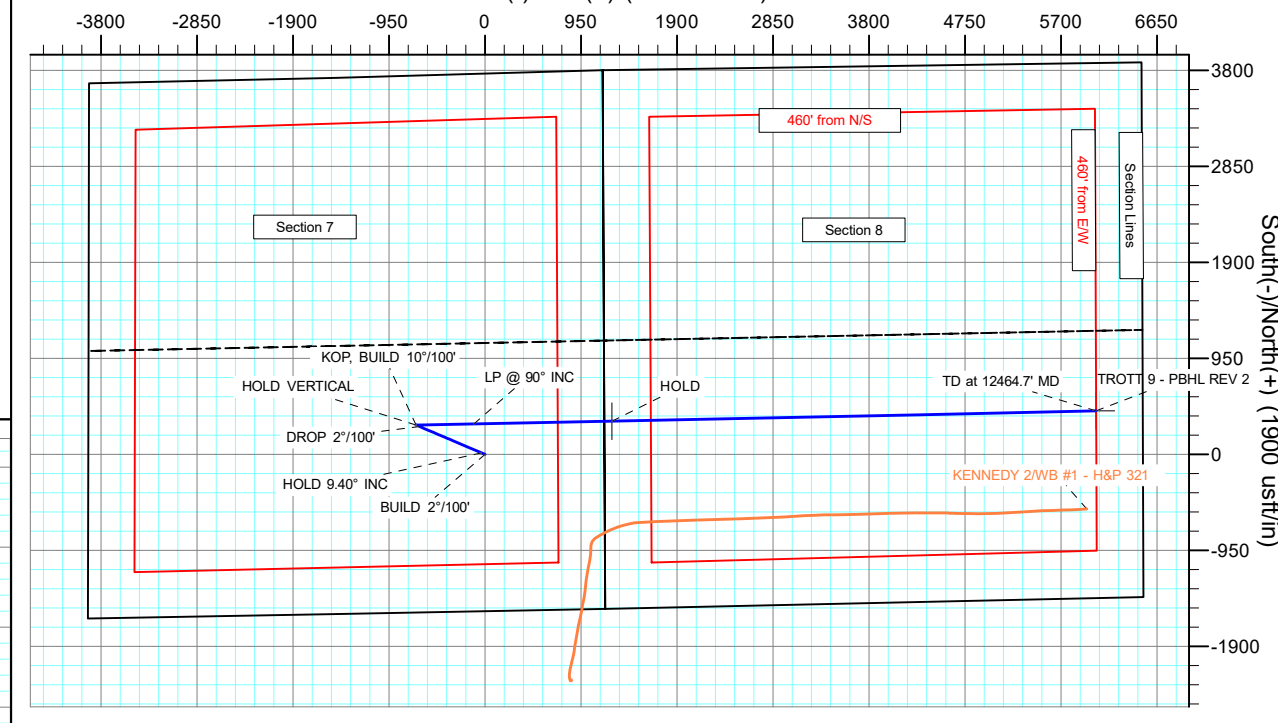
TVDPath	MDPath	Formation
2410.0	2434.5	PARKMAN
3010.0	3042.6	SUSSEX
3450.0	3488.6	SHANNON
5920.0	6303.0	NIOBRARA

PROJECT DETAILS: Weld County

Geodetic System: US State Plane 1983  
Datum: North American Datum 1983  
Ellipsoid: GRS 1980  
Zone: Colorado Northern Zone  
System Datum: Mean Sea Level

SHL:  
1552' FSL, 1182' FEL  
Sec 7-T4N-R68W  
LP:  
1857' FSL, 75' FWL  
Sec 8-T4N-R68W  
BHL:  
1852' FSL, 460' FEL  
Sec 8-T4N-R68W

West(-)/East(+) (1900 usft/in)



## Planning Report

<b>Database:</b>	EDT_32Bit_ODBC	<b>Local Co-ordinate Reference:</b>	Well TROTT 8E-10-9N
<b>Company:</b>	EXTRACTION OIL & GAS	<b>TVD Reference:</b>	KB 24' @ 5058.0usft
<b>Project:</b>	Weld County	<b>MD Reference:</b>	KB 24' @ 5058.0usft
<b>Site:</b>	Sec 7-T4N-R68W	<b>North Reference:</b>	True
<b>Well:</b>	TROTT 8E-10-9N	<b>Survey Calculation Method:</b>	Minimum Curvature
<b>Wellbore:</b>	ORIGINAL WELLBORE		
<b>Design:</b>	PROPOSAL 1		

Project	Weld County		
Map System:	US State Plane 1983	System Datum:	Mean Sea Level
Geo Datum:	North American Datum 1983		
Map Zone:	Colorado Northern Zone		

Site		Sec 7-T4N-R68W			
Site Position:		Northing:	1,359,838.99 usft	Latitude:	40° 19' 12.839 N
From:	Lat/Long	Easting:	3,129,136.57 usft	Longitude:	105° 2' 12.746 W
Position Uncertainty:	0.0 usft	Slot Radius:	13.200 in	Grid Convergence:	0.30 °

Well	TROTT 8E-10-9N					
Well Position	+N/-S	1,530.4 usft	Northing:	1,361,363.17 usft	Latitude:	40° 19' 27.962 N
	+E/-W	-1,188.6 usft	Easting:	3,127,939.98 usft	Longitude:	105° 2' 28.093 W
Position Uncertainty		0.0 usft	Wellhead Elevation:		Ground Level:	5,034.0 usft

Wellbore	ORIGINAL WELLBORE				
Magnetics	Model Name	Sample Date	Declination (°)	Dip Angle (°)	Field Strength (nT)
	IGRF2015	4/4/2017	8.37	66.76	52,345.04344039

Design	PROPOSAL 1			
Audit Notes:				
Version:	Phase:	PROTOTYPE	Tie On Depth:	0.0
Vertical Section:	Depth From (TVD) (usft)	+N/-S (usft)	+E/-W (usft)	Direction (°)
	0.0	0.0	0.0	85.93

Plan Survey Tool Program			Date	5/23/2017	
Depth From (usft)	Depth To (usft)	Survey (Wellbore)	Tool Name	Remarks	
1	0.0	12,464.7	PROPOSAL 1 (ORIGINAL WELL	MWD OWSG	
			OWSG MWD - Standard		

Plan Sections										
Measured Depth (usft)	Inclination (°)	Azimuth (°)	Vertical Depth (usft)	+N/-S (usft)	+E/-W (usft)	Dogleg Rate (°/100ft)	Build Rate (°/100ft)	Turn Rate (°/100ft)	TFO (°)	Target
0.0	0.00	0.00	0.0	0.0	0.0	0.00	0.00	0.00	0.00	
300.0	0.00	0.00	300.0	0.0	0.0	0.00	0.00	0.00	0.00	
770.2	9.40	293.03	768.1	15.1	-35.4	2.00	2.00	0.00	293.03	
4,835.7	9.40	293.03	4,778.9	274.9	-646.8	0.00	0.00	0.00	0.00	
5,305.9	0.00	0.00	5,247.0	290.0	-682.2	2.00	-2.00	0.00	180.00	
5,405.9	0.00	0.00	5,347.0	290.0	-682.2	0.00	0.00	0.00	0.00	
6,305.9	90.00	88.86	5,920.0	301.4	-109.3	10.00	10.00	0.00	88.86	
7,670.7	90.00	88.86	5,920.0	328.6	1,255.2	0.00	0.00	0.00	0.00	TROTT 9 - LP REV 2
12,464.7	90.00	88.72	5,920.0	429.9	6,048.1	0.00	0.00	0.00	-90.00	TROTT 9 - PBHL REV 2

# Planning Report

<b>Database:</b>	EDT_32Bit_ODBC	<b>Local Co-ordinate Reference:</b>	Well TROTT 8E-10-9N
<b>Company:</b>	EXTRACTION OIL & GAS	<b>TVD Reference:</b>	KB 24' @ 5058.0usft
<b>Project:</b>	Weld County	<b>MD Reference:</b>	KB 24' @ 5058.0usft
<b>Site:</b>	Sec 7-T4N-R68W	<b>North Reference:</b>	True
<b>Well:</b>	TROTT 8E-10-9N	<b>Survey Calculation Method:</b>	Minimum Curvature
<b>Wellbore:</b>	ORIGINAL WELLBORE		
<b>Design:</b>	PROPOSAL 1		

Planned Survey									
Measured Depth (usft)	Inclination (°)	Azimuth (°)	Vertical Depth (usft)	+N/-S (usft)	+E/-W (usft)	Vertical Section (usft)	Dogleg Rate (°/100ft)	Build Rate (°/100ft)	Turn Rate (°/100ft)
0.0	0.00	0.00	0.0	0.0	0.0	0.0	0.00	0.00	0.00
100.0	0.00	0.00	100.0	0.0	0.0	0.0	0.00	0.00	0.00
200.0	0.00	0.00	200.0	0.0	0.0	0.0	0.00	0.00	0.00
300.0	0.00	0.00	300.0	0.0	0.0	0.0	0.00	0.00	0.00
<b>BUILD 2°/100'</b>									
400.0	2.00	293.03	400.0	0.7	-1.6	-1.6	2.00	2.00	0.00
500.0	4.00	293.03	499.8	2.7	-6.4	-6.2	2.00	2.00	0.00
600.0	6.00	293.03	599.5	6.1	-14.4	-14.0	2.00	2.00	0.00
700.0	8.00	293.03	698.7	10.9	-25.7	-24.8	2.00	2.00	0.00
770.2	9.40	293.03	768.1	15.1	-35.4	-34.3	2.00	2.00	0.00
<b>HOLD 9.40° INC</b>									
800.0	9.40	293.03	797.5	17.0	-39.9	-38.6	0.00	0.00	0.00
900.0	9.40	293.03	896.1	23.4	-55.0	-53.2	0.00	0.00	0.00
1,000.0	9.40	293.03	994.8	29.8	-70.0	-67.7	0.00	0.00	0.00
1,100.0	9.40	293.03	1,093.5	36.1	-85.0	-82.2	0.00	0.00	0.00
1,200.0	9.40	293.03	1,192.1	42.5	-100.1	-96.8	0.00	0.00	0.00
1,300.0	9.40	293.03	1,290.8	48.9	-115.1	-111.3	0.00	0.00	0.00
1,400.0	9.40	293.03	1,389.4	55.3	-130.1	-125.9	0.00	0.00	0.00
1,500.0	9.40	293.03	1,488.1	61.7	-145.2	-140.4	0.00	0.00	0.00
1,600.0	9.40	293.03	1,586.7	68.1	-160.2	-155.0	0.00	0.00	0.00
1,700.0	9.40	293.03	1,685.4	74.5	-175.2	-169.5	0.00	0.00	0.00
1,800.0	9.40	293.03	1,784.1	80.9	-190.3	-184.1	0.00	0.00	0.00
1,900.0	9.40	293.03	1,882.7	87.3	-205.3	-198.6	0.00	0.00	0.00
2,000.0	9.40	293.03	1,981.4	93.7	-220.4	-213.2	0.00	0.00	0.00
2,100.0	9.40	293.03	2,080.0	100.1	-235.4	-227.7	0.00	0.00	0.00
2,200.0	9.40	293.03	2,178.7	106.5	-250.4	-242.3	0.00	0.00	0.00
2,300.0	9.40	293.03	2,277.3	112.9	-265.5	-256.8	0.00	0.00	0.00
2,400.0	9.40	293.03	2,376.0	119.2	-280.5	-271.4	0.00	0.00	0.00
2,434.5	9.40	293.03	2,410.0	121.4	-285.7	-276.4	0.00	0.00	0.00
<b>PARKMAN</b>									
2,500.0	9.40	293.03	2,474.6	125.6	-295.5	-285.9	0.00	0.00	0.00
2,600.0	9.40	293.03	2,573.3	132.0	-310.6	-300.4	0.00	0.00	0.00
2,700.0	9.40	293.03	2,672.0	138.4	-325.6	-315.0	0.00	0.00	0.00
2,800.0	9.40	293.03	2,770.6	144.8	-340.7	-329.5	0.00	0.00	0.00
2,900.0	9.40	293.03	2,869.3	151.2	-355.7	-344.1	0.00	0.00	0.00
3,000.0	9.40	293.03	2,967.9	157.6	-370.7	-358.6	0.00	0.00	0.00
3,042.6	9.40	293.03	3,010.0	160.3	-377.1	-364.8	0.00	0.00	0.00
<b>SUSSEX</b>									
3,100.0	9.40	293.03	3,066.6	164.0	-385.8	-373.2	0.00	0.00	0.00
3,200.0	9.40	293.03	3,165.2	170.4	-400.8	-387.7	0.00	0.00	0.00
3,300.0	9.40	293.03	3,263.9	176.8	-415.8	-402.3	0.00	0.00	0.00
3,400.0	9.40	293.03	3,362.5	183.2	-430.9	-416.8	0.00	0.00	0.00
3,488.6	9.40	293.03	3,450.0	188.8	-444.2	-429.7	0.00	0.00	0.00
<b>SHANNON</b>									
3,500.0	9.40	293.03	3,461.2	189.6	-445.9	-431.4	0.00	0.00	0.00
3,600.0	9.40	293.03	3,559.9	196.0	-461.0	-445.9	0.00	0.00	0.00
3,700.0	9.40	293.03	3,658.5	202.3	-476.0	-460.5	0.00	0.00	0.00
3,800.0	9.40	293.03	3,757.2	208.7	-491.0	-475.0	0.00	0.00	0.00
3,900.0	9.40	293.03	3,855.8	215.1	-506.1	-489.5	0.00	0.00	0.00
4,000.0	9.40	293.03	3,954.5	221.5	-521.1	-504.1	0.00	0.00	0.00
4,100.0	9.40	293.03	4,053.1	227.9	-536.1	-518.6	0.00	0.00	0.00
4,200.0	9.40	293.03	4,151.8	234.3	-551.2	-533.2	0.00	0.00	0.00
4,300.0	9.40	293.03	4,250.5	240.7	-566.2	-547.7	0.00	0.00	0.00

# Planning Report

<b>Database:</b>	EDT_32Bit_ODBC	<b>Local Co-ordinate Reference:</b>	Well TROTT 8E-10-9N
<b>Company:</b>	EXTRACTION OIL & GAS	<b>TVD Reference:</b>	KB 24' @ 5058.0usft
<b>Project:</b>	Weld County	<b>MD Reference:</b>	KB 24' @ 5058.0usft
<b>Site:</b>	Sec 7-T4N-R68W	<b>North Reference:</b>	True
<b>Well:</b>	TROTT 8E-10-9N	<b>Survey Calculation Method:</b>	Minimum Curvature
<b>Wellbore:</b>	ORIGINAL WELLBORE		
<b>Design:</b>	PROPOSAL 1		

Planned Survey									
Measured Depth (usft)	Inclination (°)	Azimuth (°)	Vertical Depth (usft)	+N/-S (usft)	+E/-W (usft)	Vertical Section (usft)	Dogleg Rate (°/100ft)	Build Rate (°/100ft)	Turn Rate (°/100ft)
4,400.0	9.40	293.03	4,349.1	247.1	-581.3	-562.3	0.00	0.00	0.00
4,500.0	9.40	293.03	4,447.8	253.5	-596.3	-576.8	0.00	0.00	0.00
4,600.0	9.40	293.03	4,546.4	259.9	-611.3	-591.4	0.00	0.00	0.00
4,700.0	9.40	293.03	4,645.1	266.3	-626.4	-605.9	0.00	0.00	0.00
4,800.0	9.40	293.03	4,743.7	272.7	-641.4	-620.5	0.00	0.00	0.00
4,835.7	9.40	293.03	4,778.9	274.9	-646.8	-625.6	0.00	0.00	0.00
DROP 2°/100'									
4,900.0	8.12	293.03	4,842.5	278.8	-655.8	-634.4	2.00	-2.00	0.00
5,000.0	6.12	293.03	4,941.7	283.6	-667.2	-645.4	2.00	-2.00	0.00
5,100.0	4.12	293.03	5,041.3	287.1	-675.4	-653.3	2.00	-2.00	0.00
5,200.0	2.12	293.03	5,141.2	289.2	-680.4	-658.2	2.00	-2.00	0.00
5,305.9	0.00	0.00	5,247.0	290.0	-682.2	-659.9	2.00	-2.00	0.00
HOLD VERTICAL									
5,405.9	0.00	0.00	5,347.0	290.0	-682.2	-659.9	0.00	0.00	0.00
KOP, BUILD 10°/100'									
5,450.0	4.41	88.86	5,391.1	290.0	-680.5	-658.2	10.00	10.00	0.00
5,500.0	9.41	88.86	5,440.7	290.2	-674.5	-652.2	10.00	10.00	0.00
5,550.0	14.41	88.86	5,489.6	290.4	-664.2	-641.9	10.00	10.00	0.00
5,600.0	19.41	88.86	5,537.5	290.6	-649.6	-627.4	10.00	10.00	0.00
5,650.0	24.41	88.86	5,583.8	291.0	-631.0	-608.8	10.00	10.00	0.00
5,700.0	29.41	88.86	5,628.4	291.5	-608.4	-586.2	10.00	10.00	0.00
5,750.0	34.41	88.86	5,670.8	292.0	-581.9	-559.8	10.00	10.00	0.00
5,800.0	39.41	88.86	5,710.8	292.6	-551.9	-529.8	10.00	10.00	0.00
5,850.0	44.41	88.86	5,748.0	293.3	-518.5	-496.4	10.00	10.00	0.00
5,900.0	49.41	88.86	5,782.1	294.0	-482.1	-460.0	10.00	10.00	0.00
5,950.0	54.41	88.86	5,813.0	294.8	-442.7	-420.7	10.00	10.00	0.00
6,000.0	59.41	88.86	5,840.3	295.6	-400.8	-378.9	10.00	10.00	0.00
6,050.0	64.41	88.86	5,863.8	296.5	-356.8	-334.8	10.00	10.00	0.00
6,100.0	69.41	88.86	5,883.4	297.4	-310.8	-288.9	10.00	10.00	0.00
6,150.0	74.41	88.86	5,898.9	298.4	-263.3	-241.5	10.00	10.00	0.00
6,200.0	79.41	88.86	5,910.2	299.3	-214.6	-192.8	10.00	10.00	0.00
6,250.0	84.41	88.86	5,917.3	300.3	-165.1	-143.4	10.00	10.00	0.00
6,300.0	89.41	88.86	5,920.0	301.3	-115.2	-93.6	10.00	10.00	0.00
6,303.0	89.41	88.86	5,920.0	301.4	-112.3	-90.6	0.00	0.00	0.00
NIOBRARA									
6,305.9	90.00	88.86	5,920.0	301.4	-109.3	-87.7	20.00	20.00	0.00
LP @ 90° INC									
6,400.0	90.00	88.86	5,920.0	303.3	-15.3	6.3	0.00	0.00	0.00
6,500.0	90.00	88.86	5,920.0	305.3	84.7	106.2	0.00	0.00	0.00
6,600.0	90.00	88.86	5,920.0	307.3	184.7	206.0	0.00	0.00	0.00
6,700.0	90.00	88.86	5,920.0	309.3	284.7	305.9	0.00	0.00	0.00
6,800.0	90.00	88.86	5,920.0	311.3	384.7	405.8	0.00	0.00	0.00
6,900.0	90.00	88.86	5,920.0	313.3	484.6	505.6	0.00	0.00	0.00
7,000.0	90.00	88.86	5,920.0	315.3	584.6	605.5	0.00	0.00	0.00
7,100.0	90.00	88.86	5,920.0	317.3	684.6	705.4	0.00	0.00	0.00
7,200.0	90.00	88.86	5,920.0	319.2	784.6	805.2	0.00	0.00	0.00
7,300.0	90.00	88.86	5,920.0	321.2	884.6	905.1	0.00	0.00	0.00
7,400.0	90.00	88.86	5,920.0	323.2	984.5	1,005.0	0.00	0.00	0.00
7,500.0	90.00	88.86	5,920.0	325.2	1,084.5	1,104.9	0.00	0.00	0.00
7,600.0	90.00	88.86	5,920.0	327.2	1,184.5	1,204.7	0.00	0.00	0.00
7,670.7	90.00	88.86	5,920.0	328.6	1,255.2	1,275.4	0.00	0.00	0.00
HOLD									
7,700.0	90.00	88.86	5,920.0	329.2	1,284.5	1,304.6	0.00	0.00	0.00

# Planning Report

<b>Database:</b>	EDT_32Bit_ODBC	<b>Local Co-ordinate Reference:</b>	Well TROTT 8E-10-9N
<b>Company:</b>	EXTRACTION OIL & GAS	<b>TVD Reference:</b>	KB 24' @ 5058.0usft
<b>Project:</b>	Weld County	<b>MD Reference:</b>	KB 24' @ 5058.0usft
<b>Site:</b>	Sec 7-T4N-R68W	<b>North Reference:</b>	True
<b>Well:</b>	TROTT 8E-10-9N	<b>Survey Calculation Method:</b>	Minimum Curvature
<b>Wellbore:</b>	ORIGINAL WELLBORE		
<b>Design:</b>	PROPOSAL 1		

Planned Survey										
Measured Depth (usft)	Inclination (°)	Azimuth (°)	Vertical Depth (usft)	+N/-S (usft)	+E/-W (usft)	Vertical Section (usft)	Dogleg Rate (°/100ft)	Build Rate (°/100ft)	Turn Rate (°/100ft)	
7,800.0	90.00	88.85	5,920.0	331.2	1,384.5	1,404.5	0.00	0.00	0.00	
7,900.0	90.00	88.85	5,920.0	333.2	1,484.4	1,504.3	0.00	0.00	0.00	
8,000.0	90.00	88.85	5,920.0	335.2	1,584.4	1,604.2	0.00	0.00	0.00	
8,100.0	90.00	88.85	5,920.0	337.2	1,684.4	1,704.1	0.00	0.00	0.00	
8,200.0	90.00	88.84	5,920.0	339.3	1,784.4	1,804.0	0.00	0.00	0.00	
8,300.0	90.00	88.84	5,920.0	341.3	1,884.4	1,903.8	0.00	0.00	0.00	
8,400.0	90.00	88.84	5,920.0	343.3	1,984.3	2,003.7	0.00	0.00	0.00	
8,500.0	90.00	88.83	5,920.0	345.3	2,084.3	2,103.6	0.00	0.00	0.00	
8,600.0	90.00	88.83	5,920.0	347.4	2,184.3	2,203.4	0.00	0.00	0.00	
8,700.0	90.00	88.83	5,920.0	349.4	2,284.3	2,303.3	0.00	0.00	0.00	
8,800.0	90.00	88.83	5,920.0	351.5	2,384.3	2,403.2	0.00	0.00	0.00	
8,900.0	90.00	88.82	5,920.0	353.5	2,484.2	2,503.1	0.00	0.00	0.00	
9,000.0	90.00	88.82	5,920.0	355.6	2,584.2	2,602.9	0.00	0.00	0.00	
9,100.0	90.00	88.82	5,920.0	357.6	2,684.2	2,702.8	0.00	0.00	0.00	
9,200.0	90.00	88.81	5,920.0	359.7	2,784.2	2,802.7	0.00	0.00	0.00	
9,300.0	90.00	88.81	5,920.0	361.8	2,884.2	2,902.5	0.00	0.00	0.00	
9,400.0	90.00	88.81	5,920.0	363.8	2,984.1	3,002.4	0.00	0.00	0.00	
9,500.0	90.00	88.81	5,920.0	365.9	3,084.1	3,102.3	0.00	0.00	0.00	
9,600.0	90.00	88.80	5,920.0	368.0	3,184.1	3,202.2	0.00	0.00	0.00	
9,700.0	90.00	88.80	5,920.0	370.1	3,284.1	3,302.0	0.00	0.00	0.00	
9,800.0	90.00	88.80	5,920.0	372.2	3,384.0	3,401.9	0.00	0.00	0.00	
9,900.0	90.00	88.79	5,920.0	374.3	3,484.0	3,501.8	0.00	0.00	0.00	
10,000.0	90.00	88.79	5,920.0	376.4	3,584.0	3,601.7	0.00	0.00	0.00	
10,100.0	90.00	88.79	5,920.0	378.5	3,684.0	3,701.5	0.00	0.00	0.00	
10,200.0	90.00	88.79	5,920.0	380.6	3,784.0	3,801.4	0.00	0.00	0.00	
10,300.0	90.00	88.78	5,920.0	382.8	3,883.9	3,901.3	0.00	0.00	0.00	
10,400.0	90.00	88.78	5,920.0	384.9	3,983.9	4,001.2	0.00	0.00	0.00	
10,500.0	90.00	88.78	5,920.0	387.0	4,083.9	4,101.1	0.00	0.00	0.00	
10,600.0	90.00	88.77	5,920.0	389.1	4,183.9	4,200.9	0.00	0.00	0.00	
10,700.0	90.00	88.77	5,920.0	391.3	4,283.8	4,300.8	0.00	0.00	0.00	
10,800.0	90.00	88.77	5,920.0	393.4	4,383.8	4,400.7	0.00	0.00	0.00	
10,900.0	90.00	88.77	5,920.0	395.6	4,483.8	4,500.6	0.00	0.00	0.00	
11,000.0	90.00	88.76	5,920.0	397.7	4,583.8	4,600.4	0.00	0.00	0.00	
11,100.0	90.00	88.76	5,920.0	399.9	4,683.8	4,700.3	0.00	0.00	0.00	
11,200.0	90.00	88.76	5,920.0	402.1	4,783.7	4,800.2	0.00	0.00	0.00	
11,300.0	90.00	88.75	5,920.0	404.2	4,883.7	4,900.1	0.00	0.00	0.00	
11,400.0	90.00	88.75	5,920.0	406.4	4,983.7	5,000.0	0.00	0.00	0.00	
11,500.0	90.00	88.75	5,920.0	408.6	5,083.7	5,099.8	0.00	0.00	0.00	
11,600.0	90.00	88.75	5,920.0	410.8	5,183.6	5,199.7	0.00	0.00	0.00	
11,700.0	90.00	88.74	5,920.0	413.0	5,283.6	5,299.6	0.00	0.00	0.00	
11,800.0	90.00	88.74	5,920.0	415.2	5,383.6	5,399.5	0.00	0.00	0.00	
11,900.0	90.00	88.74	5,920.0	417.4	5,483.6	5,499.4	0.00	0.00	0.00	
12,000.0	90.00	88.73	5,920.0	419.6	5,583.5	5,599.2	0.00	0.00	0.00	
12,100.0	90.00	88.73	5,920.0	421.8	5,683.5	5,699.1	0.00	0.00	0.00	
12,200.0	90.00	88.73	5,920.0	424.0	5,783.5	5,799.0	0.00	0.00	0.00	
12,300.0	90.00	88.73	5,920.0	426.2	5,883.5	5,898.9	0.00	0.00	0.00	
12,400.0	90.00	88.72	5,920.0	428.4	5,983.4	5,998.8	0.00	0.00	0.00	
12,464.7	90.00	88.72	5,920.0	429.9	6,048.1	6,063.3	0.00	0.00	0.00	
TD at 12464.7' MD										

## Planning Report

<b>Database:</b>	EDT_32Bit_ODBC	<b>Local Co-ordinate Reference:</b>	Well TROTT 8E-10-9N
<b>Company:</b>	EXTRACTION OIL & GAS	<b>TVD Reference:</b>	KB 24' @ 5058.0usft
<b>Project:</b>	Weld County	<b>MD Reference:</b>	KB 24' @ 5058.0usft
<b>Site:</b>	Sec 7-T4N-R68W	<b>North Reference:</b>	True
<b>Well:</b>	TROTT 8E-10-9N	<b>Survey Calculation Method:</b>	Minimum Curvature
<b>Wellbore:</b>	ORIGINAL WELLBORE		
<b>Design:</b>	PROPOSAL 1		

Design Targets									
Target Name									
- hit/miss target	Dip Angle	Dip Dir.	TVD	+N/-S	+E/-W	Northing	Easting	Latitude	Longitude
- Shape	(°)	(°)	(usft)	(usft)	(usft)	(usft)	(usft)		
TROTT 9 - PBHL REV 2	0.00	0.00	5,920.0	429.9	6,048.1	1,361,824.34	3,133,985.75	40° 19' 32.203 N	105° 1' 10.002 W
- plan hits target center									
- Point									
TROTT 9 - LP REV 2	0.00	0.00	5,920.0	328.6	1,255.2	1,361,698.29	3,129,193.49	40° 19' 31.210 N	105° 2' 11.886 W
- plan hits target center									
- Point									

Formations						
Measured Depth	Vertical Depth	Name	Lithology	Dip	Dip Direction	
(usft)	(usft)			(°)	(°)	
2,434.5	2,410.0	PARKMAN				
3,042.6	3,010.0	SUSSEX				
3,488.6	3,450.0	SHANNON				
6,303.0	5,920.0	NIOBRARA				

Plan Annotations				
Measured Depth	Vertical Depth	Local Coordinates		Comment
(usft)	(usft)	+N/-S (usft)	+E/-W (usft)	
300.0	300.0	0.0	0.0	BUILD 2°/100'
770.2	768.1	15.1	-35.4	HOLD 9.40° INC
4,835.7	4,778.9	274.9	-646.8	DROP 2°/100'
5,305.9	5,247.0	290.0	-682.2	HOLD VERTICAL
5,405.9	5,347.0	290.0	-682.2	KOP, BUILD 10°/100'
6,305.9	5,920.0	301.4	-109.3	LP @ 90° INC
7,670.7	5,920.0	328.6	1,255.2	HOLD
12,464.7	5,920.0	429.9	6,048.1	TD at 12464.7' MD