



PDC ENERGY, INC.

E&P Waste Management Plan

DJ Basin Operations

June 19, 2017

TABLE OF CONTENTS

REGULATORY FRAMEWORK - COGCC RULES 1

WATER-BASED BENTONITIC DRILLING FLUIDS & ASSOCIATED DRILL CUTTINGS 2

 BACKGROUND 2

 ESTIMATED AMOUNT OF MATERIAL 2

 LANDOWNER AGREEMENT FOR LAND APPLICATION SITES..... 2

 TRANSPORT AND HANDLING 3

 INCORPORATION OF DRILLING MUDS AND ASSOCIATED DRILL CUTTINGS 3

 SAMPLING AND ANALYSIS OF LAND APPLICATION SITES 3

 RECLAMATION OF LAND APPLICATION SITES 4

 FORM 4 – SUNDRY NOTICE 4

COMPLETION FLOW-BACK FLUIDS..... 4

PRODUCED WATER 5

IMPACTED SOIL AND/OR GROUNDWATER..... 5

APPENDICIES

- A: Land Application Site Facility List and Map
- B: Produced Water Disposal Facilities List and Map
- C: Authorized Non-Hazardous Disposal Facilities List

REGULATORY FRAMEWORK - COGCC RULES

As defined in the 100 Series rules, Exploration and Production Waste (E&P Waste) shall mean those wastes associated with operations to locate or remove oil or gas from the ground or to remove impurities from such substances and which are uniquely associated with and intrinsic to oil and gas exploration, development, or production operations that are exempt from regulation under Subtitle C of the Resource Conservation and Recovery Act (RCRA), 42 USC Sections 6921, et seq. For natural gas, primary field operations include those production-related activities at or near the wellhead and at the gas plant (regardless of whether or not the gas plant is at or near the wellhead), but prior to transport of the natural gas from the gas plant to market. In addition, uniquely associated wastes derived from the production stream along the gas plant feeder pipelines are considered E&P wastes, even if a change of custody in the natural gas has occurred between the wellhead and the gas plant. In addition, wastes uniquely associated with the operations to recover natural gas from underground storage fields are considered to be E&P waste.

The 900 Series rules for E&P Waste Management establish the permitting, construction, operating and closure requirements for pits, methods of E&P waste management, procedures for spill/release response and reporting, and sampling and analysis for remediation activities. The 900 Series rules are applicable only to E&P waste, as defined in § 34-60-103(4.5), C.R.S., or other solid waste where the Colorado Department of Public Health And Environment (CDPHE) has allowed remediation and oversight by the Commission.

Furthermore, Rule 907. sets forth requirements for the Management of E&P Waste including the following:

907.a. General Requirements

907.a.(1) – Operator obligations. *Operators shall ensure that E&P waste is properly stored, handled, transported, treated, recycled, or disposed to prevent threatened or actual significant adverse environmental impacts to air, water, soil or biological resources or to the extent necessary to ensure compliance with the concentration levels in Table 910-1, with consideration to WQCC ground water standards and classifications.*

907.a.(2) – *E&P waste management activities shall be conducted, and facilities constructed and operated, to protect the waters of the state from significant adverse environmental impacts from E&P waste, except as permitted by applicable laws and regulations.*

907.a.(3) – Reuse and recycling. *To encourage and promote waste minimization, operators may propose plans for managing E&P waste through beneficial use, reuse, and recycling by submitting a written management plan to the Director for approval on a Sundry Notice, Form 4, if applicable. Such plans shall describe, at a minimum, the type(s) of waste, the proposed use of the waste, method of waste treatment, product quality assurance, and shall include a copy of any certification or authorization that may be required by other laws and regulations. The Director may require additional information.*

WATER-BASED BENTONITIC DRILLING FLUIDS & ASSOCIATED DRILL CUTTINGS

BACKGROUND

In regards to the transport and handling of E&P waste material off-site, the first consideration is compliance under the current Colorado Oil and Gas Conservation Commission (COGCC) Rules and Regulations. Rule 907.d.(3)B. sets forth the applicability, requirements and operator obligations for the land application of water-based bentonitic drilling fluids. Rule 907.d.(3)B.v. states that prior COGCC approval is not required if the drilling fluids are utilized as a soil amendment. However, Rule 907.d. does not address associated drill cuttings. As a result, PDC Energy, Inc. (PDC) has developed this E&P Waste Management Plan in accordance with Rule 907.a.(3) to encourage and promote waste minimization through beneficial use and reuse of water-based bentonitic drilling fluids and associated drill cuttings as a soil amendment.

The second consideration is whether the operation would be classified as a Centralized E&P Waste Management Facility (CWMF) as defined in the COGCC Rules and Regulations. A facility is a CWMF if (1) it is used exclusively by one owner or operator, or used by more than one operator under an operation agreement, *and* (2) is operatory for a period of greater than three (3) years; *and* (3) received for collection, treatment, temporary storage, and/or disposal of exempt E&P wastes from two or more production units or areas or from a set of commonly owned or operated leases. PDC's E&P Waste Management Plan for the land application of water-based bentonitic drilling mud and associated drill cuttings presented herein does not include more than one operator and anticipates operating each site for less than 3 years. Therefore, any individual drilling fluid or drill cuttings land application site will not qualify as a CWMF.

A map showing the site locations and a land application site list with location and current status is included in Appendix A. Should any new land application sites be utilized by PDC or if any of the current sites be de-commissioned, a revised E&P Waste Management Plan will be submitted accordingly.

ESTIMATED AMOUNT OF MATERIAL

PDC estimates that each horizontal well (surface hole and production hole) will generate 600 barrels of water-based bentonitic drilling mud and approximately 300-400 cubic yards of associated drill cuttings. Currently, oil & gas drilling rigs have the ability to drill up to 30 horizontal wells per year. To properly manage the beneficial reuse materials, a land application site is typically dedicated to accept either water-based drilling muds or associated drill cuttings from one or two oil & gas drilling rigs. Occasionally, a land application site may accept both water-based drilling muds and associated drill cuttings from an oil & gas drilling rig.

LANDOWNER AGREEMENT FOR LAND APPLICATION SITES

As per Rule 907.d.(3).iii., written authorization is obtained from private surface owners prior to any land application of material. The agreement identifies the legal description of the land application

site and the name of the well or wells and associated legal description of the drill site where the material was generated.

Additionally, the agreement states that the “Owner acknowledges that the Colorado Oil and Gas Conservation Commission (“COGCC”) has certain requirements for the disposal of water-based bentonitic drilling fluids (or drill cuttings if applicable) and that such requirements will be followed. Owner agrees to enhance biodegradation by disking, tilling, aerating, addition of nutrients, microbes, water, or other amendments to comply fully with the Rules and Regulations of the COGCC. Owner agrees to abide by the COGCC rules, as they may be amended, and discharges PDC from any and all claims arising from the land application of the drilling fluids.”

TRANSPORT AND HANDLING

Water-based bentonitic drilling fluids and associated drill cuttings are originated from PDC drilling operations. PDC will transport the water-based bentonitic drill fluids and associated drill cuttings to the land application sites for beneficial reuse via vacuum trucks and haul trucks, respectively. Loads will be transported primarily during normal business hours. Before transportation, the drill cuttings will not contain free liquids.

In accordance with Rule 907.b.(2), information about the drilling fluid and/or associated drill cuttings E&P waste transportation will include:

- Name and location of the well(s) where the material was generated
- Volume of the material generated
- Name of material transporter
- Name and location of the land application site.

INCORPORATION OF DRILLING MUDS AND ASSOCIATED DRILL CUTTINGS

Water-based drilling muds and associated drill cuttings are initially stock piled near the entrance of the land application site. No later than 10 days after beneficial reuse materials have been stock piled, they will be incorporated into the soil as a beneficial amendment to the native soils. The beneficial reuse materials are applied to the site at thickness no more than three inches.

SAMPLING AND ANALYSIS OF LAND APPLICATION SITES

Water-based bentonitic drilling fluids that have been introduced down-hole and returned to the surface with associated drill cuttings are E&P wastes and as such, management must meet the requirements of Rule 907 of the COGCC Rules and Regulations. Rule 907.a.(1) indicates that the primary responsibility of the operator is to protect the environment and to comply with Table 910-1 which contains regulatory limits for metals, organics, and inorganics in soil and water.

Prior to any application of drilling fluids or drill cuttings at a land application site, PDC conducts baseline soil sampling and percolation tests. Each soil type at a particular site is identified through National Resource Conservation Service reports. A representative sample is collected from each NRCS soil type. One percolation test (falling head test) is conducted at the site to measure

hydraulic conductivity changes at the site. All soil samples are composited vertically from ground surface to 18 inches using a hand auger. Standard analytical sampling protocols for soils will be followed; including collection procedures, collection containers, holding times, and chain of custody. Each sample is typically analyzed for Electrical Conductivity, Sodium Adsorption Ratio, pH, and total metals listed in Table 910-1 (excluding boron).

PDC conducts post-application after the land application site use is complete, which is typically after three years. PDC will also sample each location using the approximate sampling locations and percolation points as in the baseline program. Post-application analyses include the same analyte list as in the baseline sampling program. Additionally, Total Petroleum Hydrocarbons (TPH) and Benzene, Toluene, Ethylbenzene, and Xylenes (BTEX) constituents will be analyzed on all samples collected during post-application sampling events. Should post-application sampling results indicate conditions that exceed the Table 910-1 Concentration Levels, the COGCC will be notified to determine appropriate corrective action, if necessary.

RECLAMATION OF LAND APPLICATION SITES

Upon the decision to discontinue land application at a particular site, a final sampling and percolation event will be conducted to document closure conditions. Final analyses will include the same analyte list as in the baseline sampling program, as well as TPH and BTEX constituents. Should final sampling results indicate conditions that exceed the Table 910-1 Concentration Levels, the COGCC will be notified to determine appropriate corrective action, if necessary.

FORM 4 – SUNDRY NOTICE

As stated previously, Rule 907.d.(3) does not specifically address the land application of associated drill cuttings. In accordance with Rule 907.a.(3), PDC has developed this E&P Waste Management Plan to also manage drill cuttings by land application as a soil amendment. As per COGCC requirements, a Form 4 – Sundry Notice will be submitted for consideration by the COGCC staff and will include a Site Location Map and a Soil Sample Location Map from the baseline sampling event of the proposed drill cuttings application site.

A comprehensive list and map of PDC's land application sites are located in Appendix A. The location list summarizes the active, inactive, and closed land application sites status and map exhibits where PDC has incorporated or is currently incorporating drilling mud and/or associated drill cuttings. When PDC determines subsequent land application sites are no longer necessary, a closure request will be submitted, via Form 4-Sundry Notice, for approval by COGCC staff. Should any new drill cuttings sites be created, a revised E&P Waste Management Plan will accompany the Form 4 – Sundry Notice regarding the proposed land application site.

COMPLETION FLOW-BACK FLUIDS

Flow-back fluids recovered during post-hydraulic fracturing operations are stored in temporary tanks on the location. As necessary, vacuum trucks will transport this fluid to the nearest commercial Class II injection well operated by NGL Water Solutions LLC for disposal (see Appendix

B for facility list and location map). If the solid content for the flow-back fluids are above NGL's acceptable limits, the waste liquids are transported to a permitted commercial landfill that is permitted to solidify liquids (see Appendix C for a list of authorized liquid disposal locations). PDC will ensure that the completion flow-back fluids are properly transported, stored, and handled to prevent adverse environmental impacts. PDC will maintain appropriate records of E&P waste that is transported to and from the facility in accordance with Rule 907.b.

PRODUCED WATER

Produced water (predominately a sodium-chloride type in the DJ Basin) is a waste by-product associated with oil and gas production. This waste stream is segregated at the tank battery by the separator and stored in designated tanks or in buried or partially buried vessels. Vacuum trucks make scheduled runs to these tank batteries to collect produced water. The fluid is then transported to the nearest commercial Class II injection well operated by NGL Water Solutions LLC for disposal (see Appendix B for facility list and location map). PDC will ensure that the produced water is properly transported, stored, and handled to prevent adverse environmental impacts. PDC will maintain appropriate records of E&P waste that is transported to and from the facility in accordance with Rule 907.b.

IMPACTED SOIL AND/OR GROUNDWATER

As per Rule 906.a, spill/releases of E&P waste, including produced fluids, shall be controlled and contained immediately upon discovery. Impacts resulting from spill/releases shall be investigated and remediated as soon as practicable. Spill/releases shall be reported to the appropriate regulatory agencies in accordance with Rule 906.b. Impacted groundwater or surface water that is recovered as a result of a spill is typically transported to the nearest commercial Class II injection well operated by NGL Water Solutions LLC for disposal (see Appendix B for facility list and location map). Impacted soils are typically removed and transported to a commercial landfill for disposal (see Appendix C for a list of PDC authorized disposal facilities).

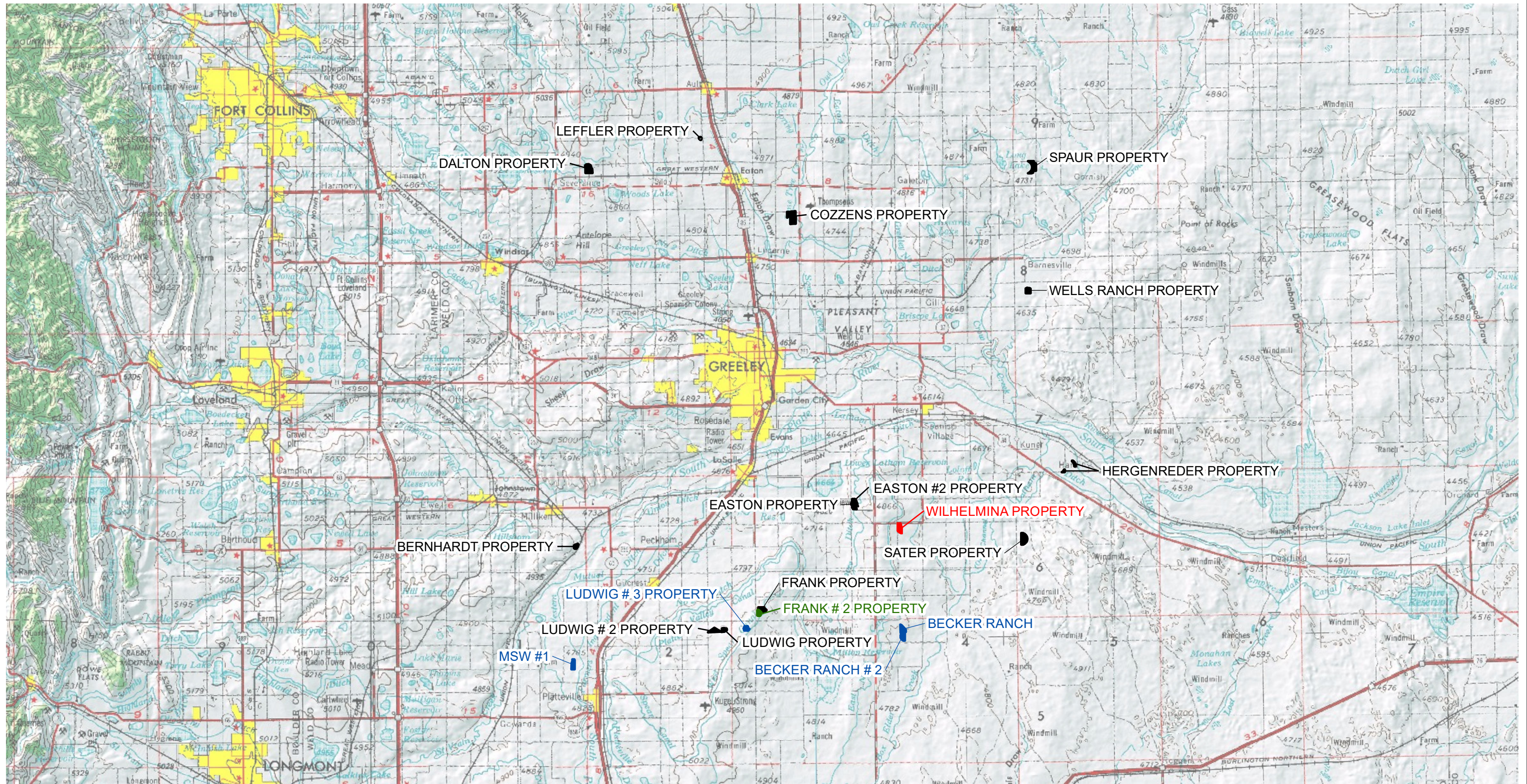
APPENDIX A

LAND APPLICATION FACILITY LIST AND MAP

Appendix A

LAND APPLICATION SITE LIST PDC ENERGY

FACILITY NAME	FACILITY ID	PDC ENERGY	FACILITY BASELINE SAMPLING DATE	CURRENT FACILITY STATUS
Becker Ranch #2 Beneficial Reuse Area	449950	SW 1/4 of Sec. 5 3N - 64W	4/19/2017	Active
MSW #1	448329	NESW 12 3N - 67W	11/3/2016	Active
Ludwig #3 Beneficial Reuse Area	444255	SWNE 6 T3N - R65W	10/29/2015	Active
Becker Ranch Beneficial Reuse Area	159534	5 T3N - R64W	10/24/2014	Active
Wilhelmina #1 Beneficial Reuse Area	436033	NWNW 17 - T4N - R64W	1/15/2014	Inactive as of June 13, 2017
Frank #2 Beneficial Reuse Area	434889	NWSW 32 T4N - R65W	9/19/2013	Inactive as of September 3, 2016
Ludwig #2 Beneficial Reuse Area	431183	NW 1 T3N - R66W	11/29/2012	Inactive- Received environmental closure from the COGCC, awaiting final reclamation inspection
Ludwig #1 Beneficial Reuse Area	430649	NW 1 T3N - R66W	10/12/2012	Inactive- Received environmental closure from the COGCC, awaiting final reclamation inspection
Easton #2 Beneficial Reuse Area	429629	NW 12 T4N - R65W	7/2/2012	Inactive- Received environmental closure from the COGCC, awaiting final reclamation inspection
Spaur Beneficial Reuse Area	425114	NE 31 T7N - R63W	2/25/2011	Closed 7/9/2013
Frank Beneficial Reuse Area	425112	NESW 32 T4N - R65W	10/14/2010	Closed 10/22/2014
Bernhardt Beneficial Reuse Area	425121	SE 13 T4N - R67W	7/8/2010	Closed 8/31/2011
Leffler Beneficial Reuse Area	425120	NENE 26 T7N - R66W	3/12/2010	Closed 2/18/2010
Cozzens Beneficial Reuse Area	425119	NWNE 9 T6N - R65W	3/10/2010	Closed 4/26/2010
Dalton Beneficial Reuse Area	425118	NW 31 T7N - R66W	2/24/2010	Closed 4/26/2011
Hergenruder Beneficial Reuse Area	425117	NESW 33 T5N - R63W	12/18/2009	Closed 1/11/2010
Paul Sater Beneficial Reuse Area	425116	SW 18 T4N - R63W	11/19/2009	Closed 11/21/2013
Easton Beneficial Reuse Area	425115	NW 12 T4N - R65W	7/27/2009	Closed 1/27/2014
Well Ranch Beneficial Reuse Area	428254	30 T6N - R63W	10/15/2008	Closed 1/27/2014



LEGEND

- ACTIVE LAND APPLICATION AREA
- INACTIVE LAND APPLICATION AREA
- INACTIVE LAND APPLICATION AREA - AWAITING RECLAMATION CLOSURE
- CLOSED LAND APPLICATION AREA



FIGURE 1
LAND APPLICATION FACILITY MAP
WELD COUNTY, COLORADO

PDC ENERGY, INC.



APPENDIX B

PRODUCED WATER DISPOSAL FACILITIES LIST AND MAP

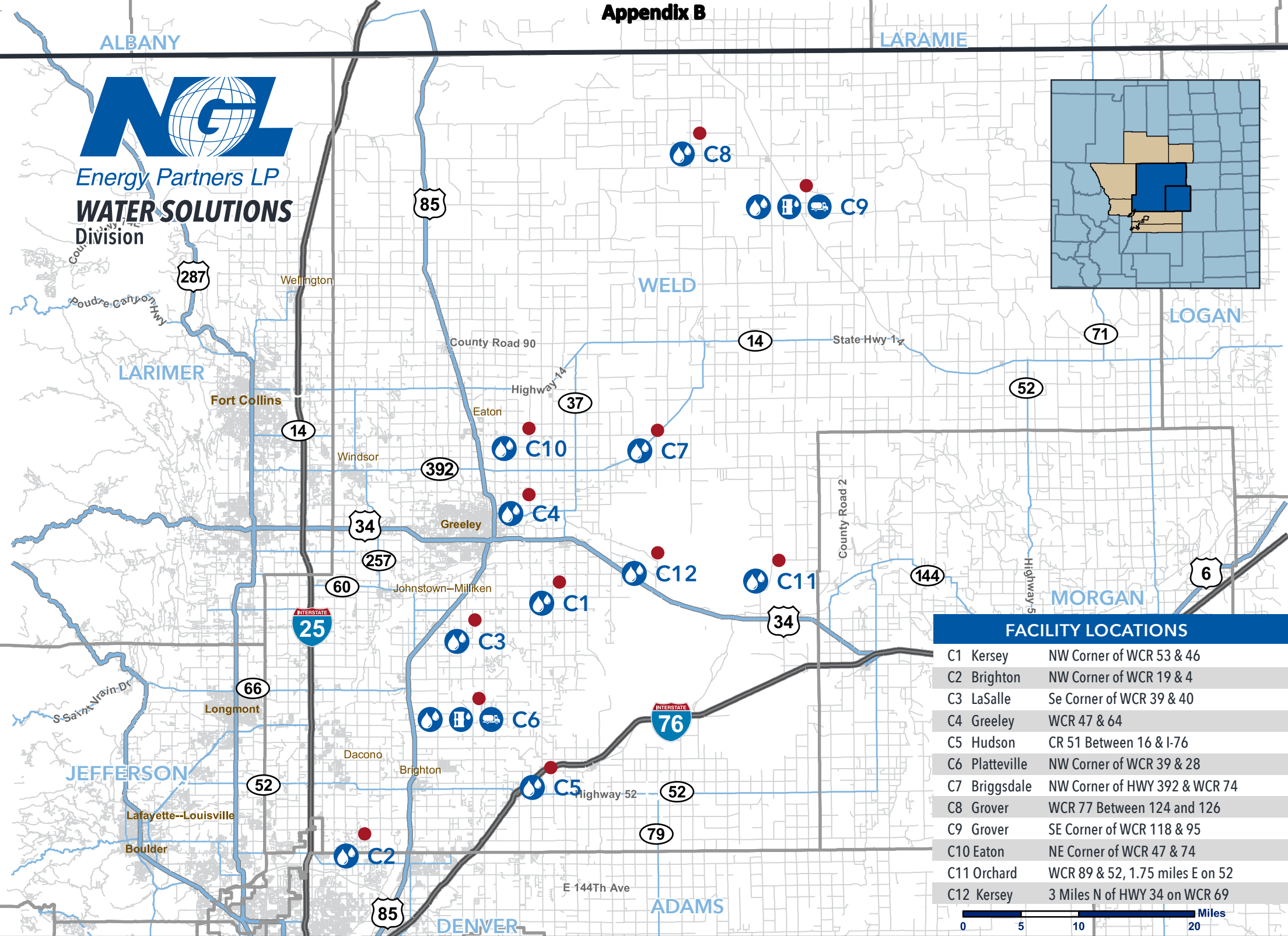
Appendix B



NGL Water Solutions Contact Information

Manager of Field Coordination 24/7 Coverage			
Melissa Howerter	(970) 373-8503	Melissa.Howerter@nglep.com	8207 W. 20th St., Suite B, Greeley, CO 80634
Ticket Inquires Hours: 8am - 5pm Monday - Friday			
Courtney Guzman	(970) 356-5560	Courtney.Guzman@nglep.com	8207 W. 20th St., Suite B, Greeley, CO 80634
Billing Information Hours: 8am - 5pm Monday - Friday			
Rae Chrisman	(970) 356-5560	Rae.Chrisman@nglep.com	8207 W. 20th St., Suite B, Greeley, CO 80634

NGL Facilities							
					PLEASE COORDINATE ALL LOADS/WASHOUTS W/ MELISSA		
Facility	Status	Hours	Facility Address	Intersections	Truck Washout	Slurry Injection	Solids Processing Facility
C1 - Kersey	Open	24/7	25849 WCR 46 Kersey, CO 80644	WCR 53 & WCR 46			
C2 South - Brighton	CLOSED	PLEASE DIVERT TO C2 NORTH UNTIL FURTHER NOTICE	1191 WCR 19 Brighton, CO 80601	WCR 19 & WCR 6			
C2 North - Brighton	Open	24/7	1635 WCR 19 Brighton, CO 80601	SOUTH SIDE OF CR 6 & WCR 19			
C3 - LaSalle	Open	24/7	19094 WCR 40 LaSalle, CO 80645	SW Corner of 39 & 40			
C4 - Greeley	Open	6:00 am - 6:00 pm DAILY	22625 WCR 64 Greeley, CO 80631	WCR 47 & WCR 64			
C5 - Hudson	Open	6:00 am - 6:00 pm Mon-Fri	7174 WCR 51 Keensberg, CO 80643	NE Corner of 16 & 51			
C6 - Platteville	Open	24/7	13159 WCR 39 Platteville, CO 80651	WCR 39 & WCR 28	Open - 24/7		Open 24/7
C7 - Briggsdale	Open	24/7	33857 WCR 74 Briggsdale, CO 80611	HWY 392 & WCR 74			
C8 - Grover	CLOSED	PLEASE DIVERT TRUCKS TO C9 UNTIL FURTHER NOTICE	61635 WCR 77 Grover, CO 80729	WCR 77 Between 124 and 126			
C9 - Grover	Open	24/7	57736 WCR 95 Grover, CO 80729	Corner of 118 & WCR 95	Open - 24/7	Open - 24/7	
C10 - Eaton	Open	24/7	22719 WCR 74 Eaton, CO 80615	NW Corner of 47 & 74			
C11 - Orchard	Open	24/7	45795 WCR 52 Orchard, CO 80649	WCR 89 & 52, 1 mile E on 52, N side of Rd.			
C12 - Kersey 70's Ranch	Pipelined Water Only	Not accepting trucks at this time	31084 CR 388 Kersey, CO 80644	3 Miles N of 34 on 69, on NW side			



FACILITY LOCATIONS

C1	Kersey	NW Corner of WCR 53 & 46
C2	Brighton	NW Corner of WCR 19 & 4
C3	LaSalle	Se Corner of WCR 39 & 40
C4	Greeley	WCR 47 & 64
C5	Hudson	CR 51 Between 16 & I-76
C6	Platteville	NW Corner of WCR 39 & 28
C7	Briggsdale	NW Corner of HWY 392 & WCR 74
C8	Grover	WCR 77 Between 124 and 126
C9	Grover	SE Corner of WCR 118 & 95
C10	Eaton	NE Corner of WCR 47 & 74
C11	Orchard	WCR 89 & 52, 1.75 miles E on 52
C12	Kersey	3 Miles N of HWY 34 on WCR 69



CONTACT US

3773 East Cherry Creek North Drive · Denver, CO 80209 // 303-815-1010 // www.nglep.com

APPENDIX C

AUTHORIZED NON-HAZARDOUS DISPOSAL FACILITIES LIST

Appendix C

Authorized Non-Hazardous Disposal Facilities PDC Energy		
Waste Classification	Disposal Facility	Contact Information
Non-Hazardous Liquids	Waste Management - CSI Landfill	41800 E. 88th Avenue, Bennet, CO 80102 Alan Scheere - Site Manager 303-944-7520 cell
Municipal, Industrial, E&P exempt/non-exempt, special waste; SOLIDS ONLY	Waste Connections, Inc. - Front Range Landfill	1830 WCR 5, Erie, CO 80516 Dan Gudgel - Division Landfill Manager CO 303-673-9431; 303-507-3324 (cell); danG@wasteconnections.com
Municipal, Industrial, E&P exempt/non-exempt, special waste; Solids and Liquids	Republic Servies - Tower Road Landfill	8480 Tower Road, Commerce City, CO 80022 Steve Derus - Operations Manager 303-408-9347
Municipal, Industrial, E&P exempt/non-exempt, special waste; SOLIDS ONLY	Waste Management - North Weld Landfill	40000 County Road 25 Ault, CO 80610-9748 970-686-2800
Municipal, Industrial, E&P exempt/non-exempt, special waste; SOLIDS ONLY	Waste Management - Buffalo Ridge Landfill	11655 WCR 59, Keenesburg, CO 80643 Jack Epple - Operations Manager 720-876-2627; 303-732-0218 (cell); jepple@wm.com
E&P Exempt liquids with very low solids content	NGL Water Solutions LLC	Weld County, Colorado 970-373-8503