

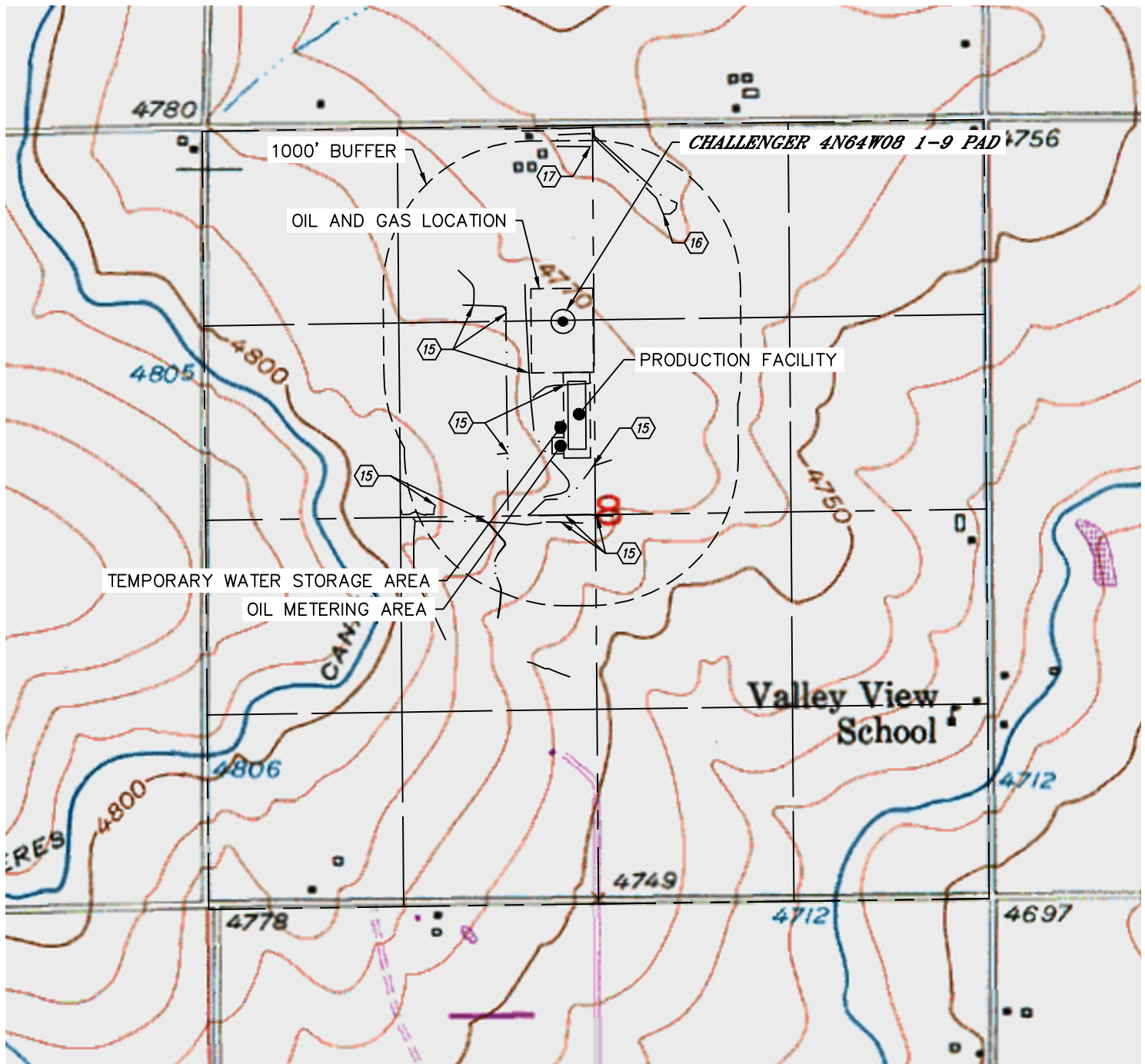


Lat40°, Inc. 6250 W. 10th Street, Unit 2, Greeley, CO 970-515-5294

# HYDROLOGY MAP

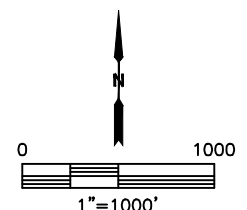
## CHALLENGER 4N64W08 1-9 PAD

SECTION: 8  
TOWNSHIP: 4N  
RANGE: 64W  
6TH. P.M.  
WELD COUNTY, CO



DISTANCES MEASURED FROM THE EDGE OF THE OIL AND GAS LOCATION.

- 15 DITCH (1) INSIDE LOCATION, 17', 170', 302' & 391' W, 56' SE, 384', 397' & 434' S, 637' & 866' SW
- 16 LOW AREA 693' NE
- 17 POND 959' N



NEAREST DOWN GRADIENT SURFACE WATER: (1) INSIDE LOCATION

DATE: 4/3/2017  
PROJECT#: 2016123