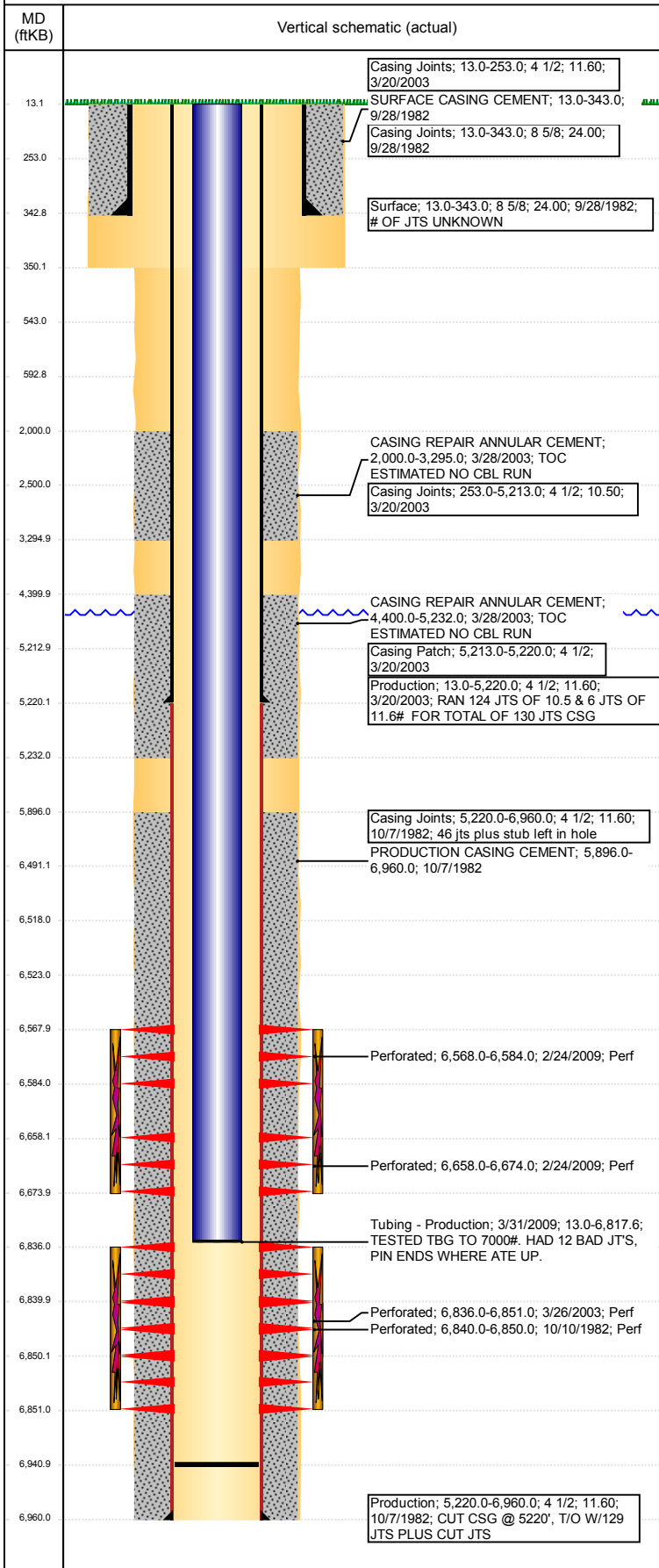


Well Name: SITZMAN 01

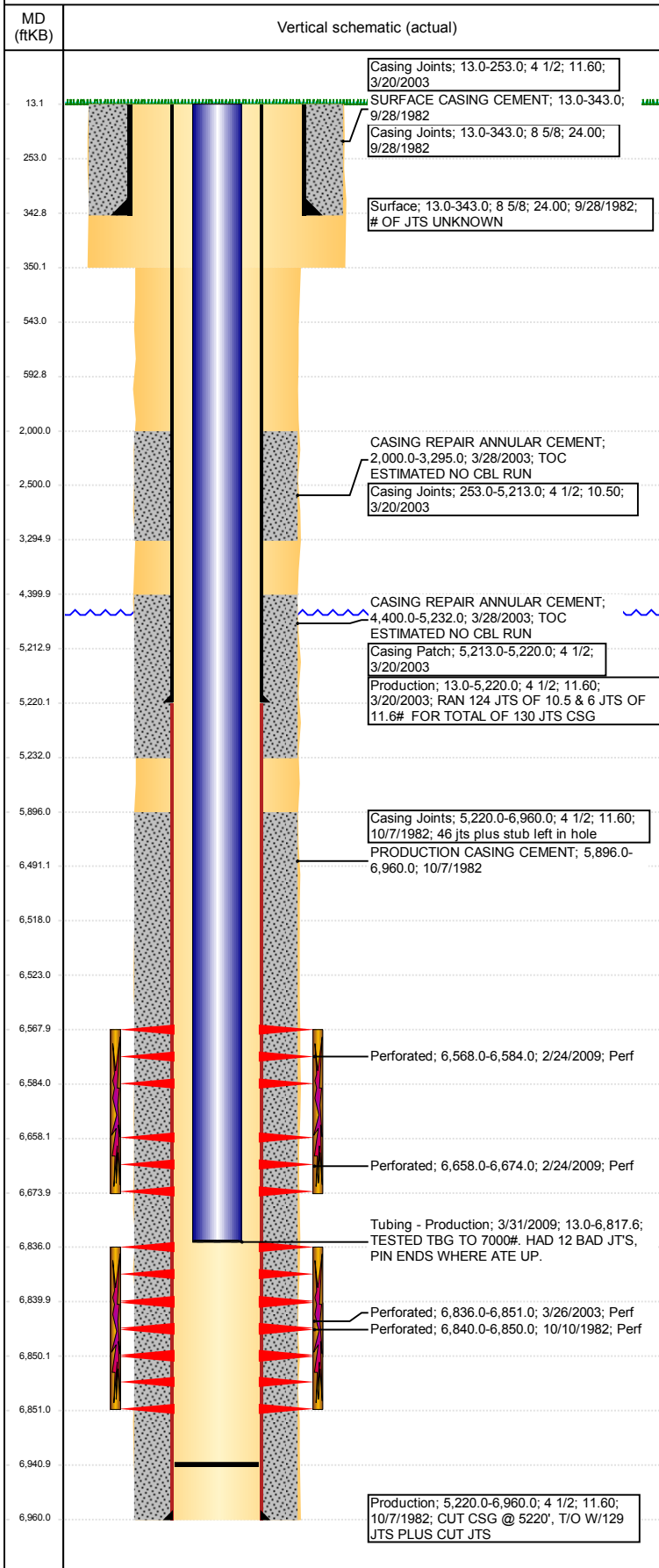
VERTICAL - ORIGINAL HOLE, 7/19/2017 4:52:20 PM



Well Header									
API 05-123-10819		Business Unit DJ BASIN		District 15		Well Config VERTICAL			
Original KB Elevation (ft) 4,700		KB - GL / MSL (ftKB) 13.00		Spud Date 9/28/1982		P & A Date			
Comment WELL FILE DATA SKETCHY - CSG CUT & 5220', RUN PATCH & CMT 3/28/03									
Directions To Well WCR 50 & 53, EAST 3/10, SOUTH INTO									
Congressional Location									
Quarter 3 NW		Quarter 4 NE		Section 4	Township 4	Twnshp N/S Dir N	Range 64		Range E/W Dir W
Bottom Hole Location									
North-South Distance (ft)			From N or S Line		East-West Distance (ft)		From E or W Line		
Plug Back Total Depths									
Date		Depth (ftKB)	Method			Com			
4/11/2003		6,911.0	CASING TALLY			C/O WITH SN/NC.			
3/31/2009		6,941.0	TAG						
Wellbore Sections									
Section Des			Size (in)		Act Top, MD (ftKB)		Act Btm, MD (ftKB)		
SURFACE			12 1/4		13		350		
PRODUCTION			7 7/8		350		6,960		
Zone Statuses									
Zone Name		Status Date	Status	Fluid Type	Job	Prod Method			
CODELL		11/2/1982	PR	Water	DRILLING/CO...	Flowing			
CODELL		4/8/2003	PR		RE-FRAC, 2/13...				
CODELL		2/23/2009	SI		RECOMPLETI...				
CODELL		4/3/2009	PR		RECOMPLETI...				
CODELL		2/9/2010	PR						
CODELL		10/27/2016	SI	Water		Flowing			
NIOBRARA		3/20/2009	PR		RECOMPLETI...				
NIOBRARA		4/3/2009	PR		RECOMPLETI...				
NIOBRARA		2/9/2010	PR						
Casing Strings									
Surface, 343.0ftKB									
Casing Description Surface		Run Date 9/28/1982	OD (in) 8 5/8	Wt/Len (l...) 24.00	Grade	Top, MD (ft...) 13.0	MD (ftKB) 343.0		
Production, 5,220.0ftKB									
Casing Description Production		Run Date 3/20/2003	OD (in) 4 1/2	Wt/Len (l...) 10.50	Grade	Top, MD (ft...) 13.0	MD (ftKB) 5,220.0		
Production, 6,960.0ftKB									
Casing Description Production		Run Date 10/7/1982	OD (in) 4 1/2	Wt/Len (l...) 11.60	Grade	Top, MD (ft...) 5,220.0	MD (ftKB) 6,960.0		
Cement									
Description SURFACE CASING CEMENT					Top Depth (ftKB) 13.0		Bottom Depth (ftKB) 343.0		
Description PRODUCTION CASING CEMENT					Top Depth (ftKB) 5,896.0		Bottom Depth (ftKB) 6,960.0		
Description CASING REPAIR ANNULAR CEMENT					Top Depth (ftKB) 2,000.0		Bottom Depth (ftKB) 3,295.0		
Description CASING REPAIR ANNULAR CEMENT					Top Depth (ftKB) 4,400.0		Bottom Depth (ftKB) 5,232.0		
Description Dump Bail					Top Depth (ftKB) 6,491.0		Bottom Depth (ftKB) 6,518.0		
Description Squeeze					Top Depth (ftKB) 13.0		Bottom Depth (ftKB) 543.0		
Description Cement Plug					Top Depth (ftKB) 2,000.0		Bottom Depth (ftKB) 2,500.0		
Description Balance Plug					Top Depth (ftKB) 543.0		Bottom Depth (ftKB) 593.0		
Tubing Strings									
Tubing Description Tubing - Production		Run Date 4/11/2003	String... 2 3/8	ID (in) 4.70	Wt (lb/ft) 4.70	Grade J-55	Len (ft) 6,817.00	Set De...	
Tubing Description Tubing - Frac string		Run Date 2/25/2009	String... 2 7/8	ID (in) 2.44	Wt (lb/ft) 6.50	Grade N-80	Len (ft) 6,508.80	Set De...	
Tubing Description Tubing - Production		Run Date 3/31/2009	String... 2 3/8	ID (in) 2.00	Wt (lb/ft) 4.70	Grade J-55	Len (ft) 6,804.59	Set De...	

Well Name: SITZMAN 01

VERTICAL - ORIGINAL HOLE, 7/19/2017 4:52:20 PM



Other In Hole				
Run Date	Des	OD (in)	Top (ftKB)	Btm (ftKB)
7/17/2017	Cast Iron Bridge Plug	3.99	6,518.0	6,523.0

Logs				
Date	Type	Top, MD (ftKB)	Btm, MD (ftKB)	
10/8/1982	COMPENSATED DENSITY	3,500.0	6,951.0	
10/8/1982	INDUCTION	343.0	6,948.0	
3/14/2003	CEMENT BOND	5,896.0	6,757.0	
3/26/2003	COLLAR LOCATOR	6,300.0	6,926.0	
9/16/2016	GYRO	0.0	6,750.0	

Perforation Data					
Linked Zone	Bnch/St g	Sum of Entered Shot Total	Top (ftKB)	Btm (ftKB)	Date
NIOBRARA, ORIGINAL HOLE	A	64	6,568.00	6,584.00	2/24/2009
NIOBRARA, ORIGINAL HOLE	B	64	6,658.00	6,674.00	2/24/2009
CODELL, ORIGINAL HOLE		60	6,836.00	6,851.00	3/26/2003
CODELL, ORIGINAL HOLE		21	6,840.00	6,850.00	10/10/1982
Total (Sum)		209			

Stimulation Intervals		
Start Date	Primary Job Type	
10/13/1982	DRILLING/COMPLETION - ORIGINAL	
Technical Result	Tech Result Details	Tech Result Note
Comment		
Start Date	Primary Job Type	
4/7/2003	RE-FRAC	
Technical Result	Tech Result Details	Tech Result Note
Comment		
REFRAC'D VIA TBG W/PKR		
Start Date	Primary Job Type	
3/19/2009	RECOMPLETION	
Technical Result	Tech Result Details	Tech Result Note
Success	According to Plan	
Comment		
NIOBRARA RE-COMPLETE. PRE-ISIP (96 BBL) = 3272 PSI , 5-MIN = 2259 PSI. THE TREATMENT WENT GOOD. THE TREATMENT EXHIBITED A RELATIVELY FLAT PRESSURE RESPONSE. POST- ISIP = 3620 PSI, 5-MIN = 3508 PSI. TURN ON IN 21 MINUTES WITH 3300 PSI.		