



Temperature (Quick Look)
Gamma Ray
Casing Collar Log

Company TEP Rocky Mountain LLC
Well Youberg SR 331-12
Field Rulison
County Garfield
State Colorado

Company TEP Rocky Mountain LLC
Well Youberg SR 331-12
Field Rulison
County Garfield
State Colorado

Location: API #: 05-045-23296

Other Services

1880' FNL & 2117' FEL SWNE
SEC 12 TWP 7S RGE 94W

Elevation

Permanent Datum Ground Level Elevation 7254'
Log Measured From Kelly Bushing 24 FT
Drilling Measured From Kelly Bushing

K.B. 7278'
D.F. 7277'
G.L. 7254'

Date 17-JUN-2017

Run Number	One		
Depth Driller	9403 FT		
Depth Logger	9346 FT		
Bottom Logged Interval	9346 FT		
Top Log Interval	Surface		
Open Hole Size	8.750"		
Type Fluid	Fresh Water		
Density / Viscosity	8.34 lb/gal		
Max. Recorded Temp.	171°F		
Estimated Cement Top	4250 FT		
Time Well Ready	14:00		
Time Logger on Bottom	15:00		
Equipment Number	HDO359		
Location	Grand Junction, CO		
Recorded By	Michael Kochevar		
Witnessed By	---		

Borehole Record			Tubing Record				
Run Number	Bit	From	To	Size	Weight	From	To

Casing Record	Size (in)	Wgt (lbs/ft)	Grade	Top	Bottom
Surface Casing	9 5/8	32.3	---	Surface	1100 FT
Intermediate #1	4 1/2	11.6	---	Surface	9403 FT
Intermediate #2					
Liner					

<<< Fold Here >>>

All interpretations are opinions based on inferences from electrical or other measurements and we cannot and do not guarantee the accuracy or correctness of any interpretation, and we shall not, except in the case of gross or willful negligence on our part, be liable or responsible for any loss, costs, damages, or expenses incurred or sustained by anyone resulting from any interpretation made by any of our officers, agents or employees. These interpretations are also subject to our general terms and conditions set out in our current Price Schedule.

Comments

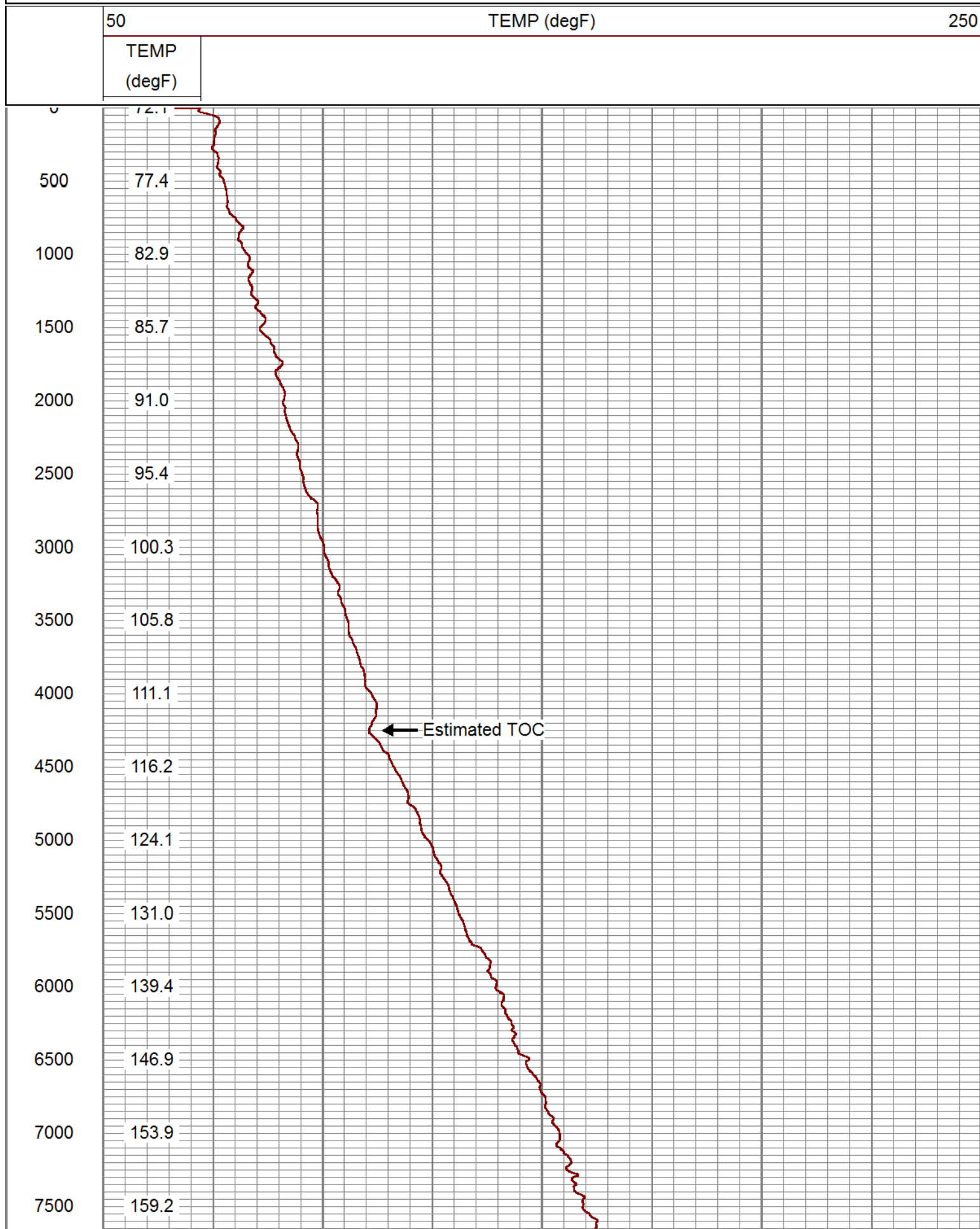
Log ran as per customer request
Depth referenced to Kelly Bushing
Marker joint logged at 5696 FT to 5717 FT

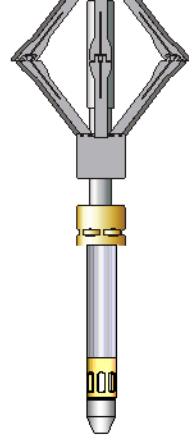

Thank you for choosing Reliance Oilfield Services, LLC!!



Main Pass (Quick Look)

Database File	tep_youberg sr 331-12_06-17-17_temp\processed_tep_youberg sr 331-12_06-17-17_temp.db
Dataset Pathname	pass3.1
Presentation Format	ros_temp_ql_tep
Dataset Creation	Sat Jun 17 23:19:03 2017
Charted by	Depth in Feet scaled 1:10000



			DSS_RAC-RAC_5-Arm 5 Arm 2-3/4" Roller Centralizer	2.55	2.75	32.00
TEMP	0.37					
HVOLTX	0.00		UW_PRT-PRT_016 (10025093) Platinum Resistance Thermometer	1.04	1.69	5.20
ITEMPX	0.00					
TSTAMP	0.00		UW_BUL-UW_BUL_006 (10019730) Sondex Ultrawire Bullnose Terminator	0.22	1.69	1.20
Dataset: processed_tep_youberg sr 331-12_06-17-17_temp.db: field/well/run1/pass3.1						
Total length: 12.71 ft						
Total weight: 128.80 lb						
O.D.: 3.13 in						

Calibration Report					
Database File	c:\programdata\warrior\data\tep_youberg sr 331-12_06-17-17_temp\processed_tep_youberg sr 331-1				
Dataset Pathname	pass3.1				
Dataset Creation	Sat Jun 17 23:19:03 2017				
Temperature Calibration Report					
Serial Number:		10025093			
Tool Model:		PRT_016			
Performed:		Sun Oct 11 12:31:14 2015			
Point #	Reading			Reference	
1	13006.00	cps	68.00	degF	
2	18181.00	cps	104.00	degF	
3	29634.00	cps	176.00	degF	
4	41077.00	cps	248.00	degF	
5	52560.00	cps	320.00	degF	
6	58409.00	cps	356.00	degF	
7		cps		degF	
8		cps		degF	
9		cps		degF	
10		cps		degF	
Gamma Ray Calibration Report					
Serial Number:		10019371			
Tool Model:		UW_PGR_020			
Performed:		(Not Performed)			
Calibrator Value:		1.0	GAPI		
Background Reading:		0.0	cps		
Calibrator Reading:		1.0	cps		
Sensitivity:		1.0000	GAPI/cps		

 RELIANCE OILFIELD SERVICES	Company	TEP Rocky Mountain LLC
	Well	Youberg SR 331-12
	Field	Rulison
	County	Garfield

	State	Colorado
--	-------	----------