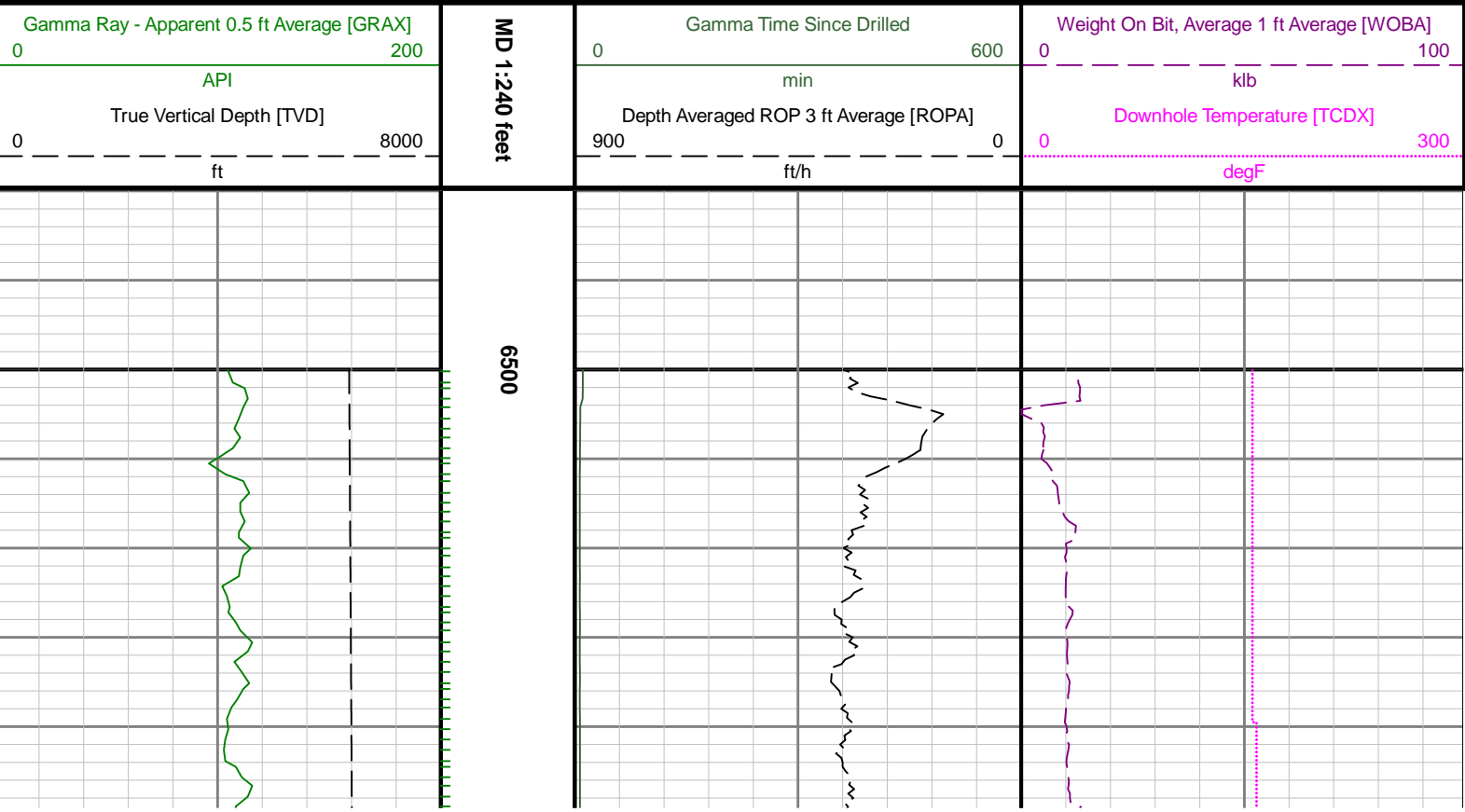


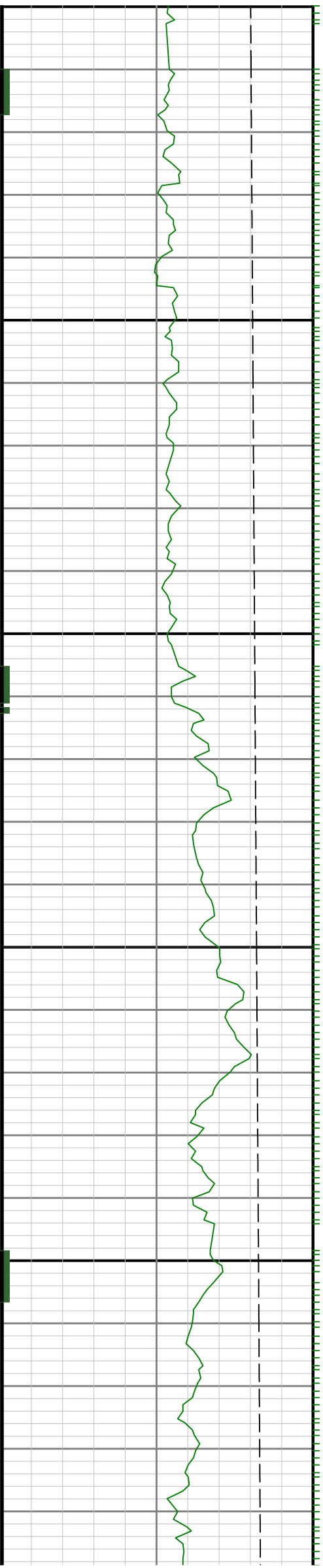


Gamma Ray

Scale: 1:240 MD		Company: Anadarko					
Depth Reference: Driller's Depth		Well: Camenisch 4C-35HZ					
		Field: Wattenburg					
		County: Weld		Country: United States			
		State: Colorado					
Status: Field Print		Surface Location: Latitude: 39° 46' 00" N Longitude: 106° 04' 00" W			Other Services: Directional		
API: 051234334400 Job ID: 8485448		SEC: 2 TWN: 1N RGE: 67W					
Permanent Datum (P.D.): Ground Level		Elevation: 5037.00 ft		Interval: 1862.00 ft - 14220.00 ft		Elevations:	
Log Measured From: Rig Floor		Above P.D. 32.00 ft		Created: 2017-04-22 22:53:51		Elev. KB: N/A	
BHI Rep 1: Tien Bui		BHI Rep 2: Gabriel Scarborough				Elev. DF: 5069.00 ft	
Client Representative: Anadarko						Elev. GL: 5037.00 ft	

"These interpretations and analyses ("Interpretations") are opinions provided by Baker Hughes Oilfield Operations, Inc ("Baker Hughes"), based upon industry practice, empirical relationships, assumptions and measurements, (many of which may be provided by the customer). The Interpretations are not infallible and may be subject to different opinions. Vjwu."Dcmgt"Jwi jgu"fqgu"pqv"ycttcpv"vjgkt"ceewtce{."eqttgevpguu."qt"eqorngvgpguu."qt"vjcv"vjg"ewuvqogtøu"cpflqt"cp{"vjktf"rctv{øu"tgnkcpeg"qp"uwej"Kpvgtrtgvcvkqpu"yknn"ceeqornku j"cp{"rctvkewnct"tguwnvu0"Vjg"ewuvqogt"cuuwogu"hwnn" responsibility for the use of the Interpretations and for decisions based thereon and the customer agrees to release, defend and indemnify Baker Hughes, its parent, subsidiaries and affiliated or related entities, and subcontractors, together with its and their officers, directors, employees, agents and invitees against, any and all claims, losses, damages, or expenses sustained by the customer or any third party arising out of reliance upon or use of the Interpretations, without regard to the cause(s) thereof, including without limitation any form of negligence on the part of Baker Hughes. Unless other contract terms have been agreed to by the parties, each party's liabilities and qdnkicvkqpu"ujcnn"dg"iqxgtpgf"d{"Dcmgt"Jwi jgu"Kpeqtrqtcvgføu"Yqtnfykfg"Vgtou"cpf"Eqpfkvkqpu0\$"

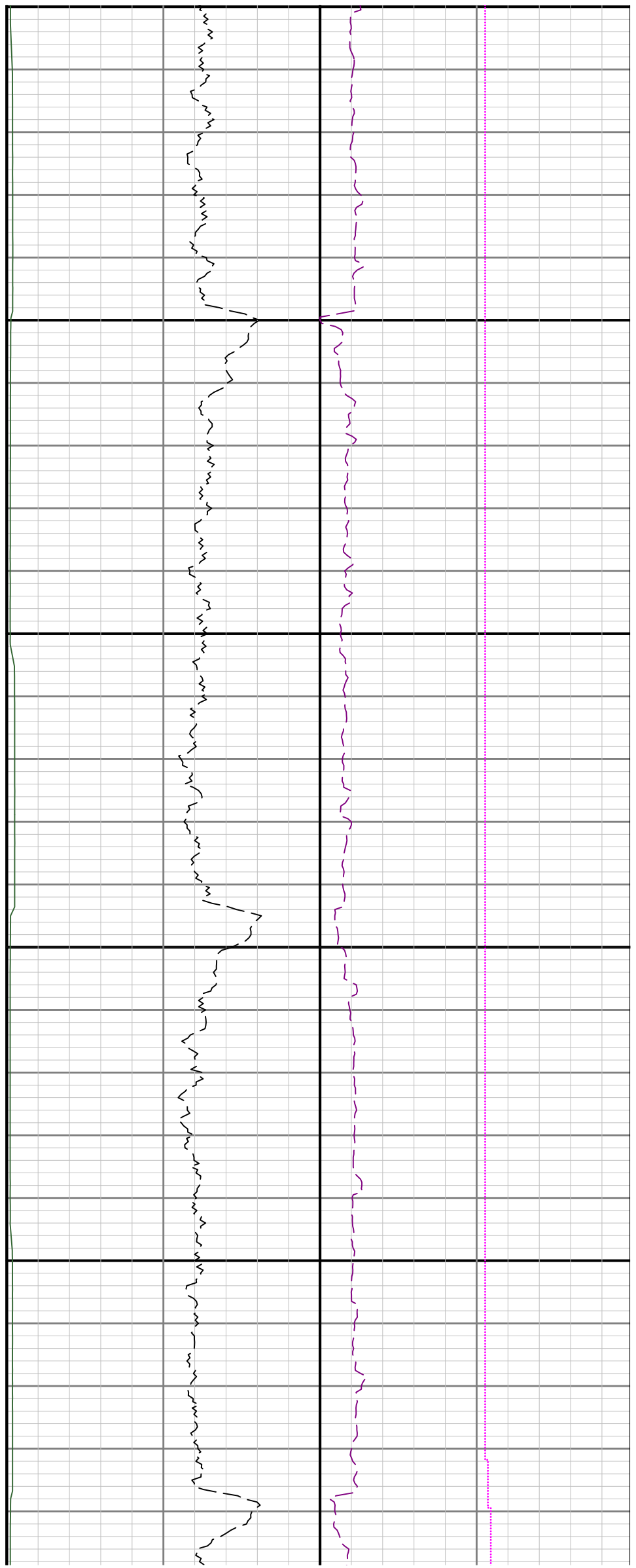


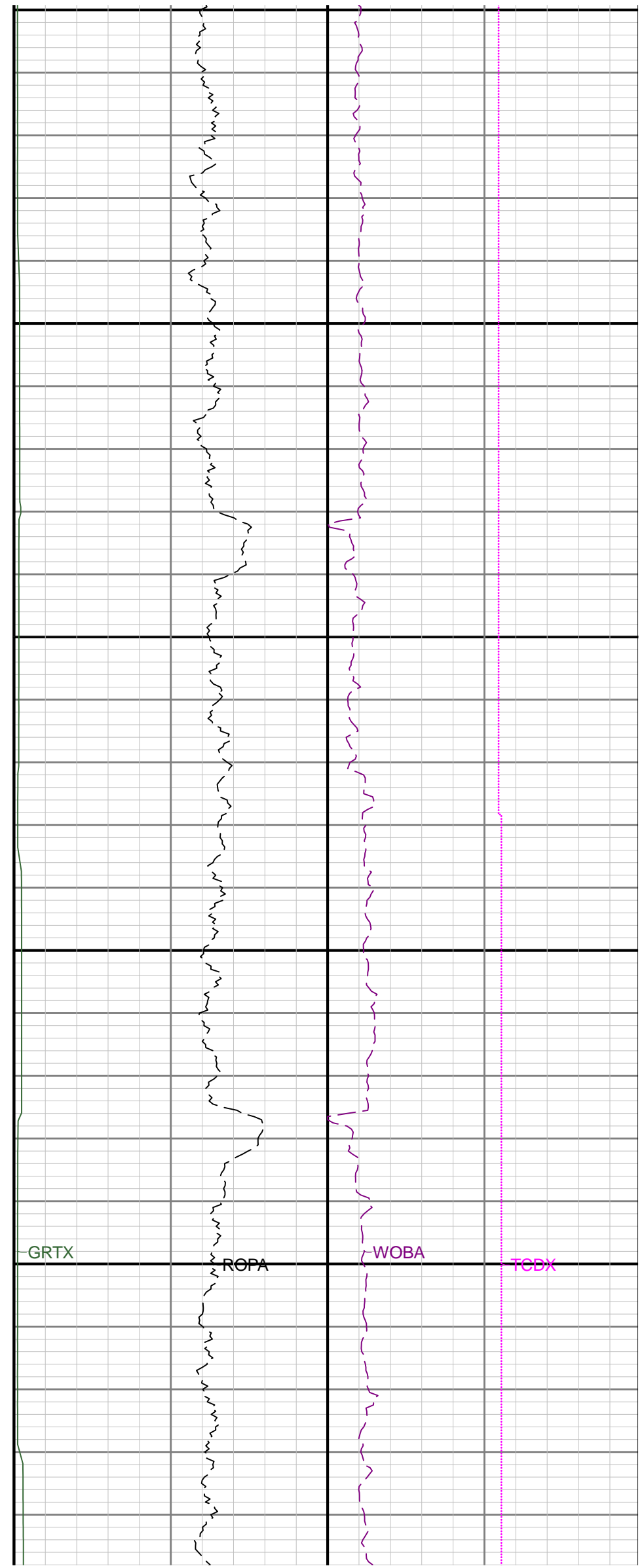
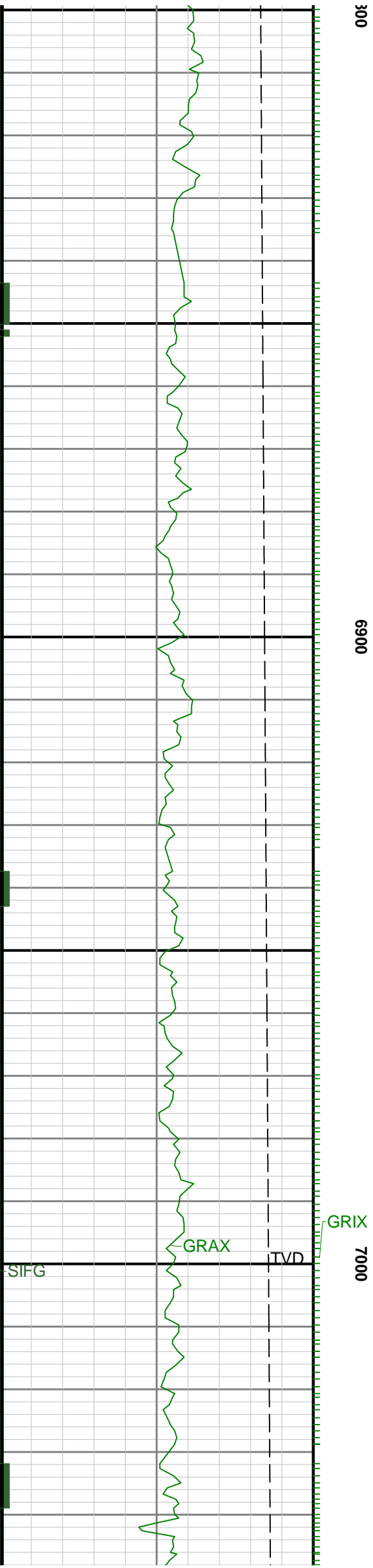


6

6700

0099

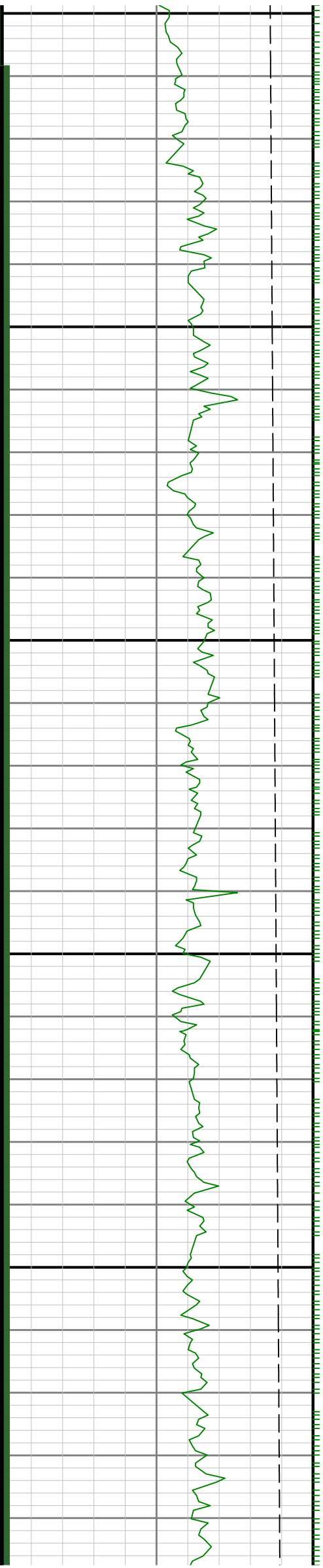


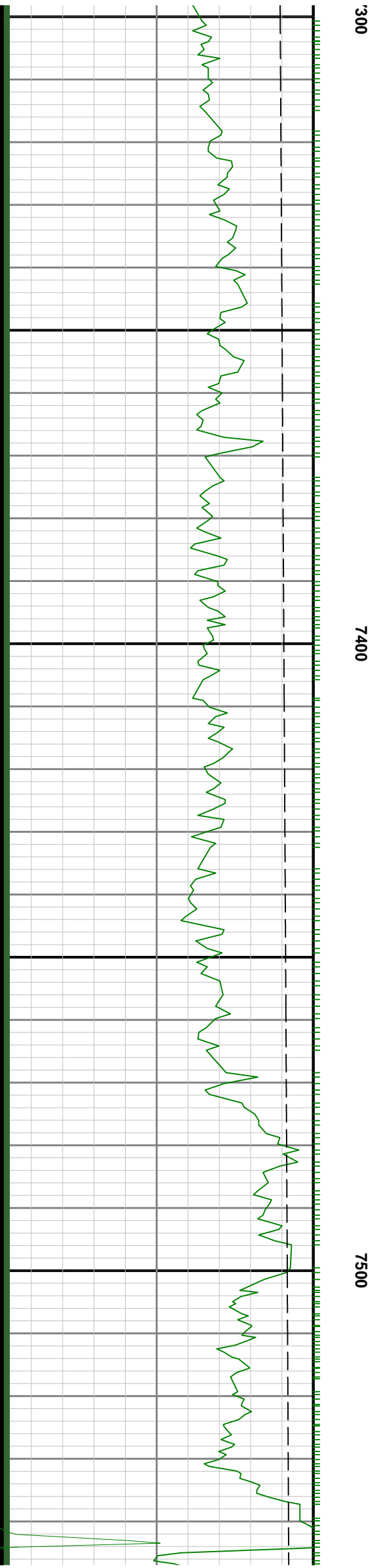
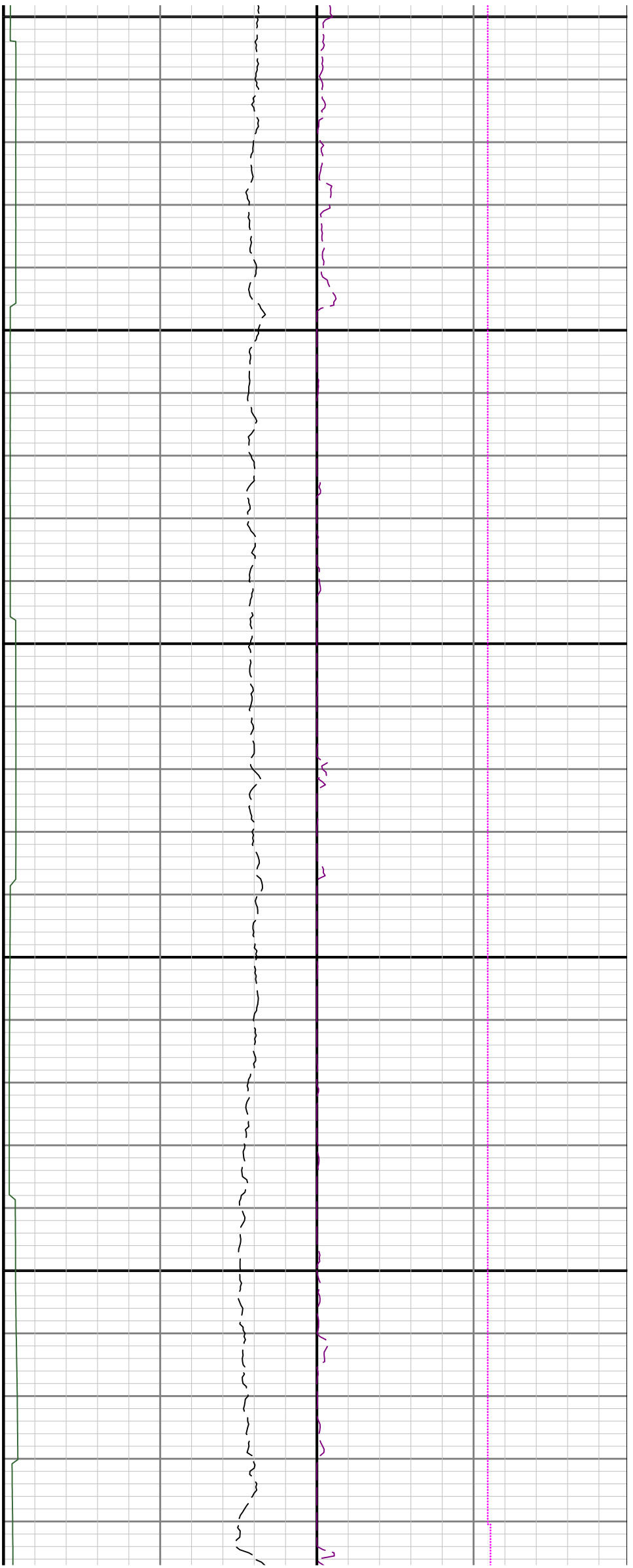




7100

7200

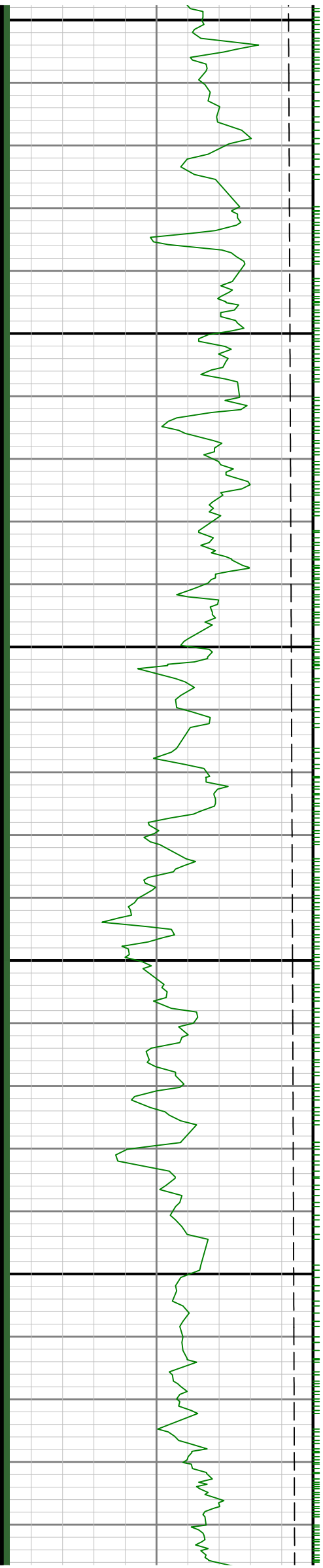


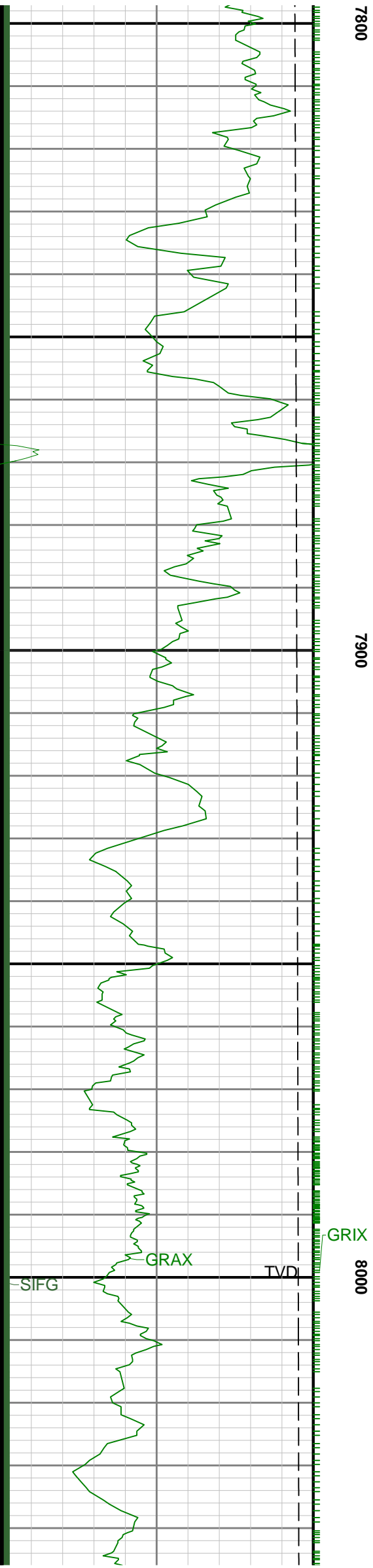


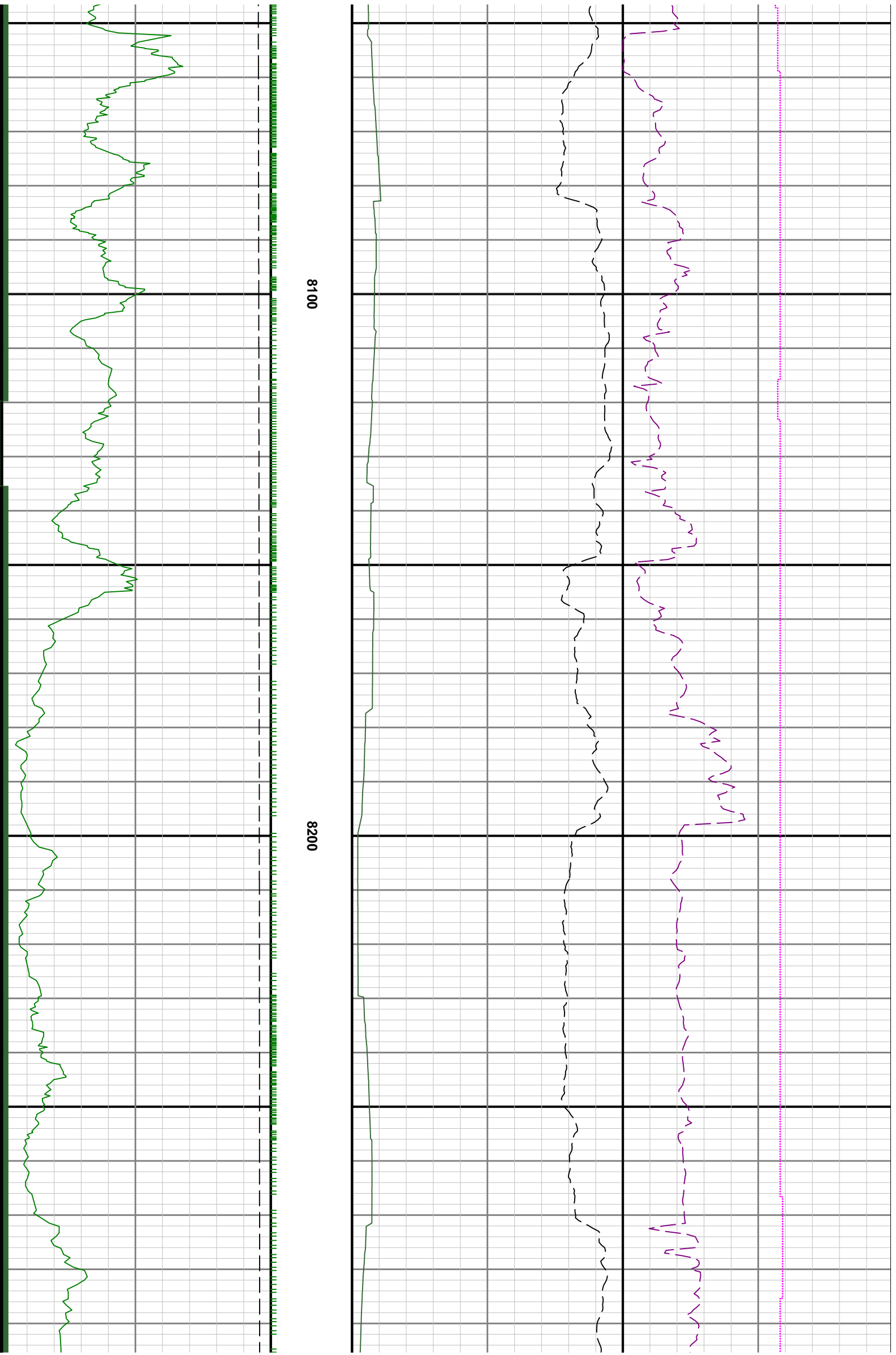


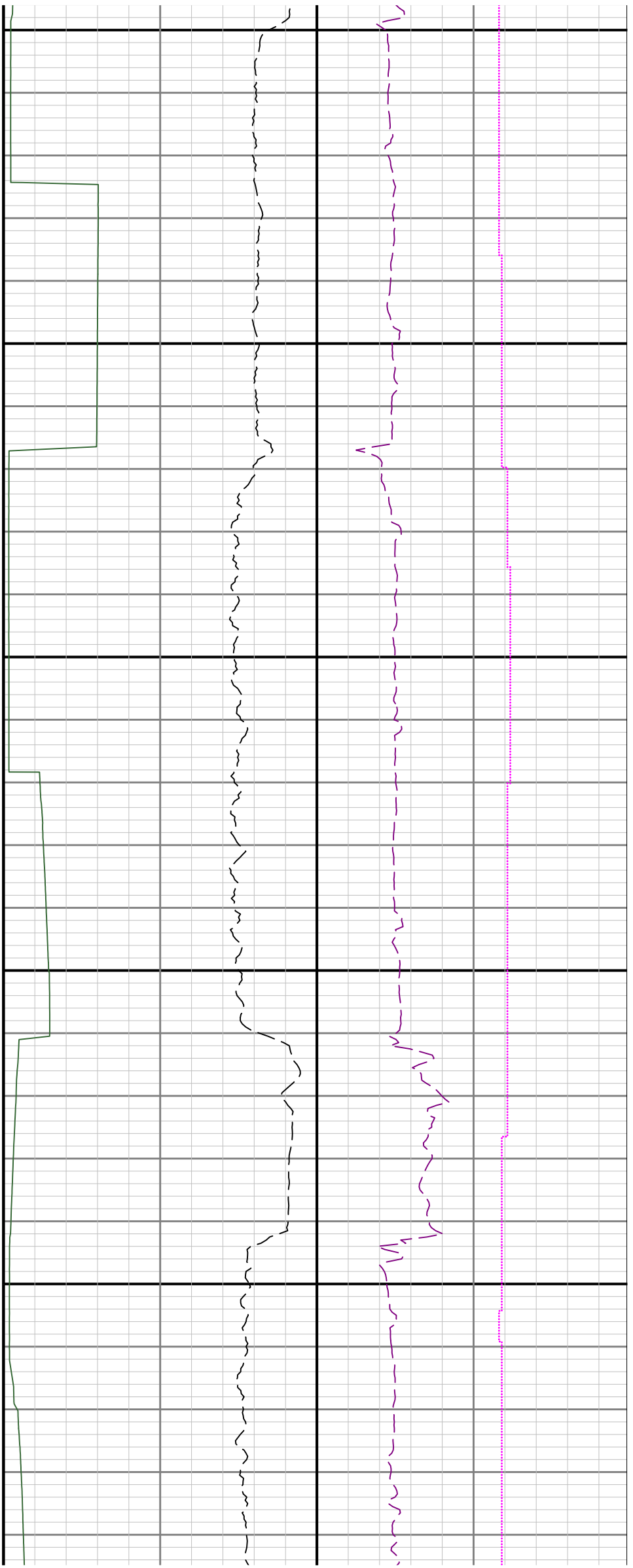
7600

7700





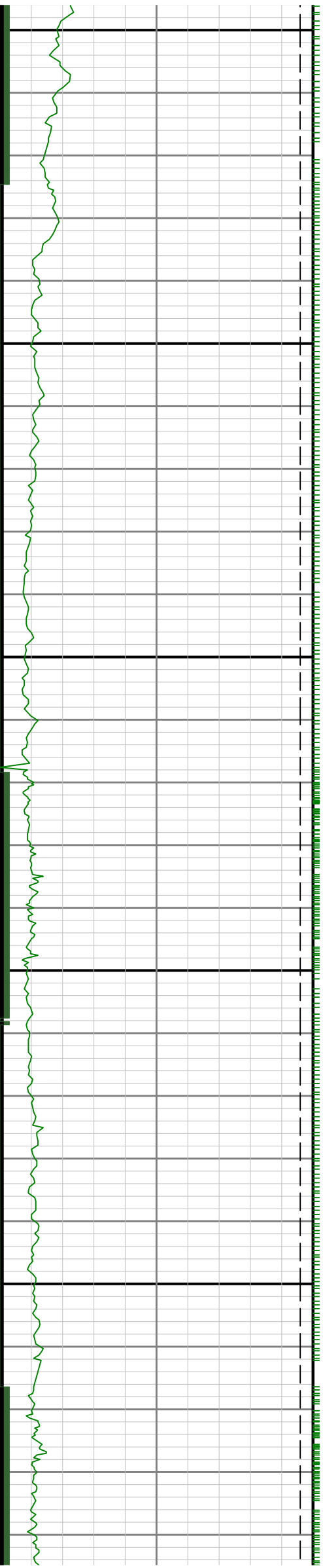


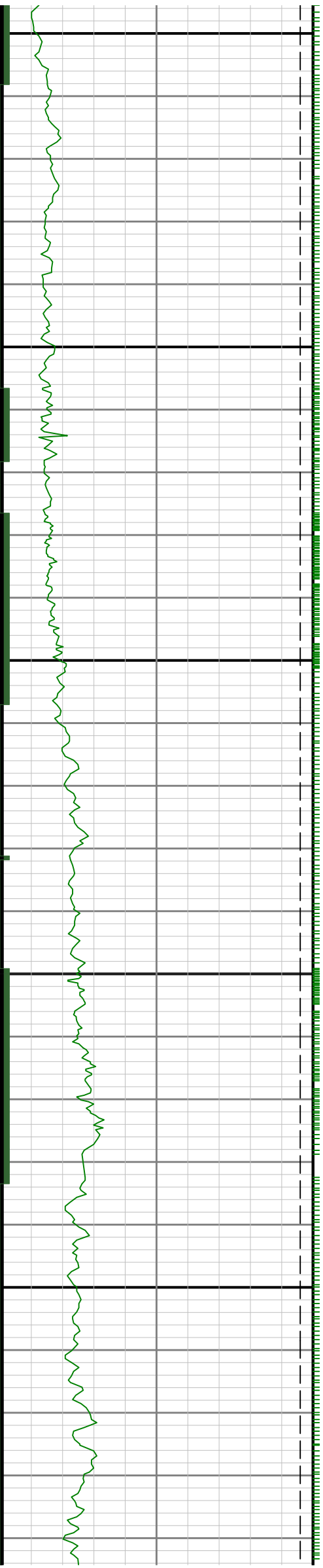


8300

8400

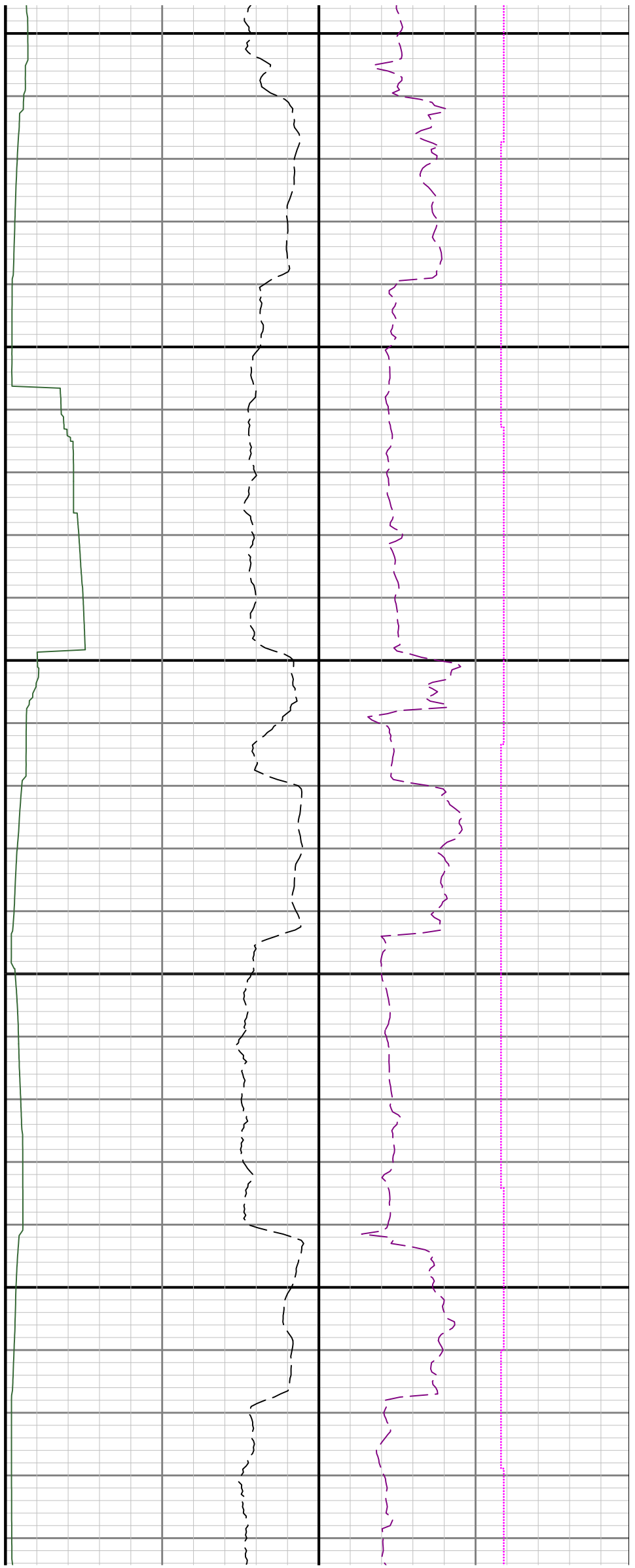
8500

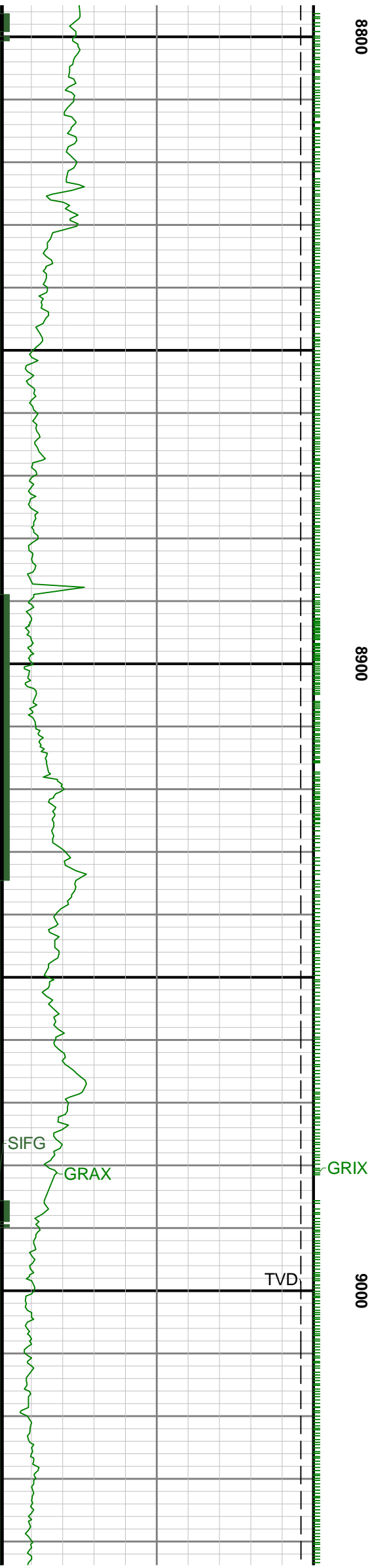




0098

8700

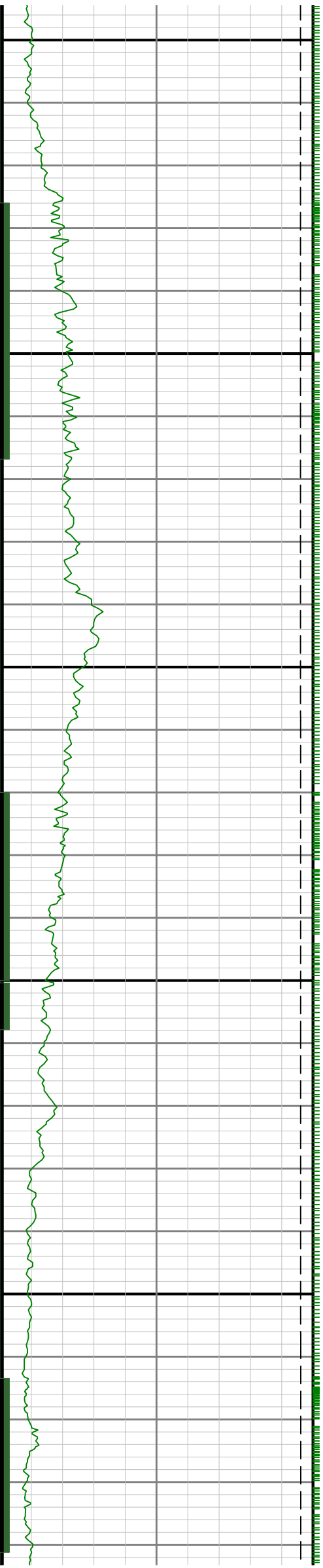


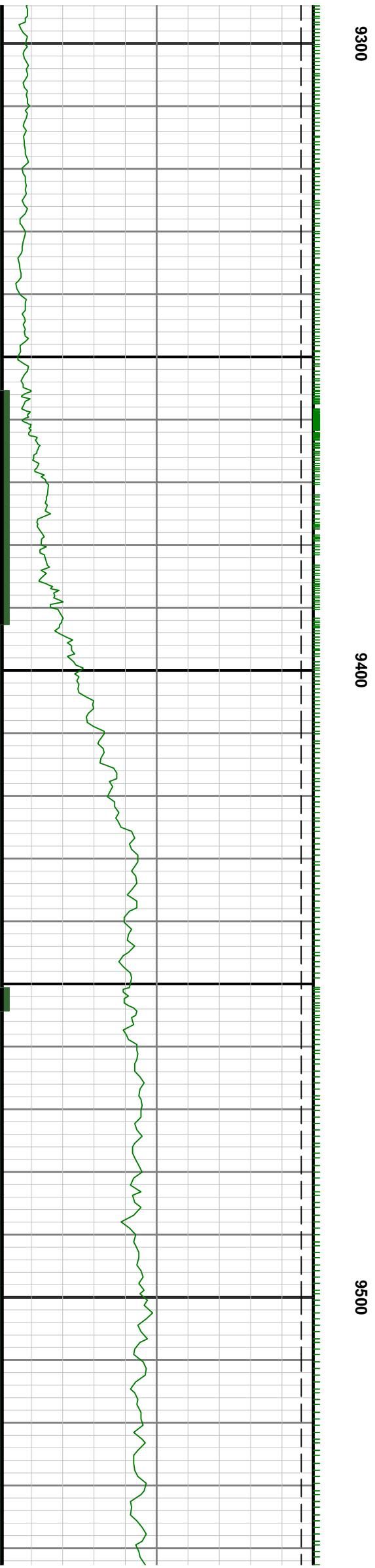
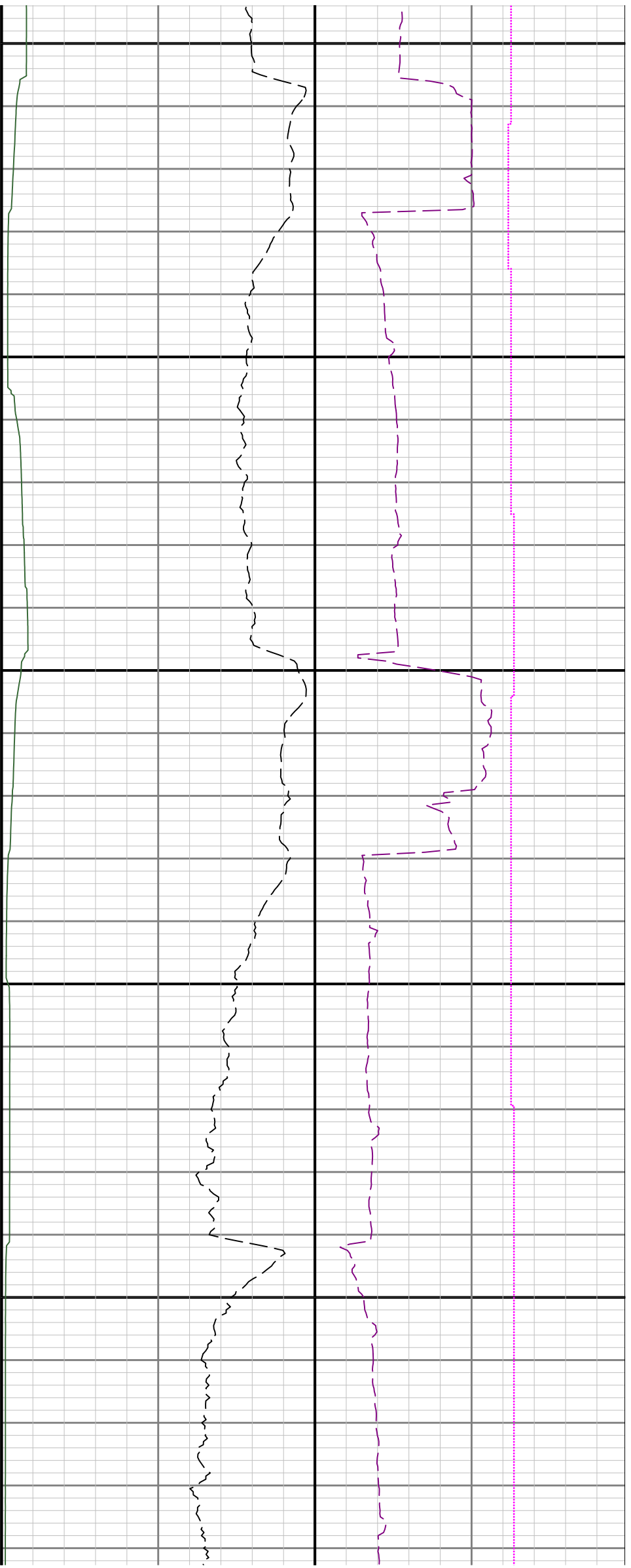


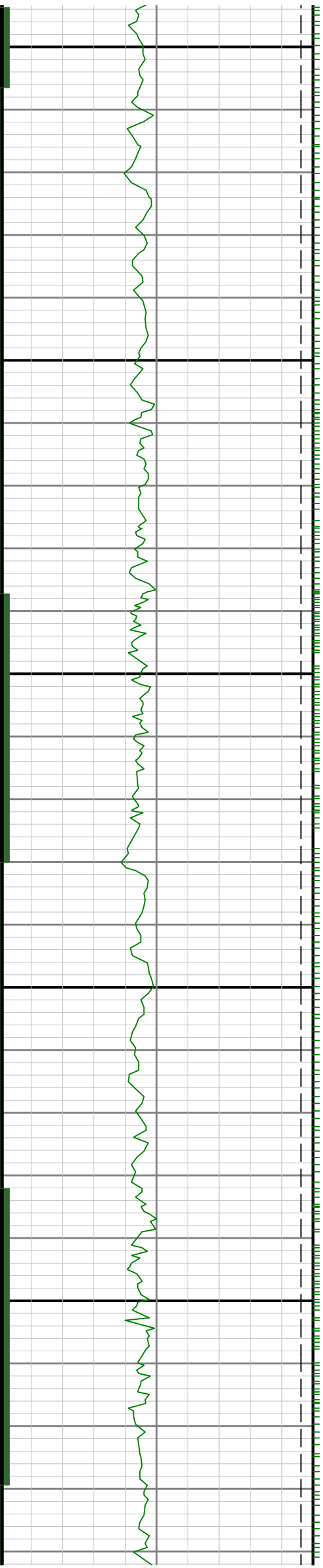


9100

9200

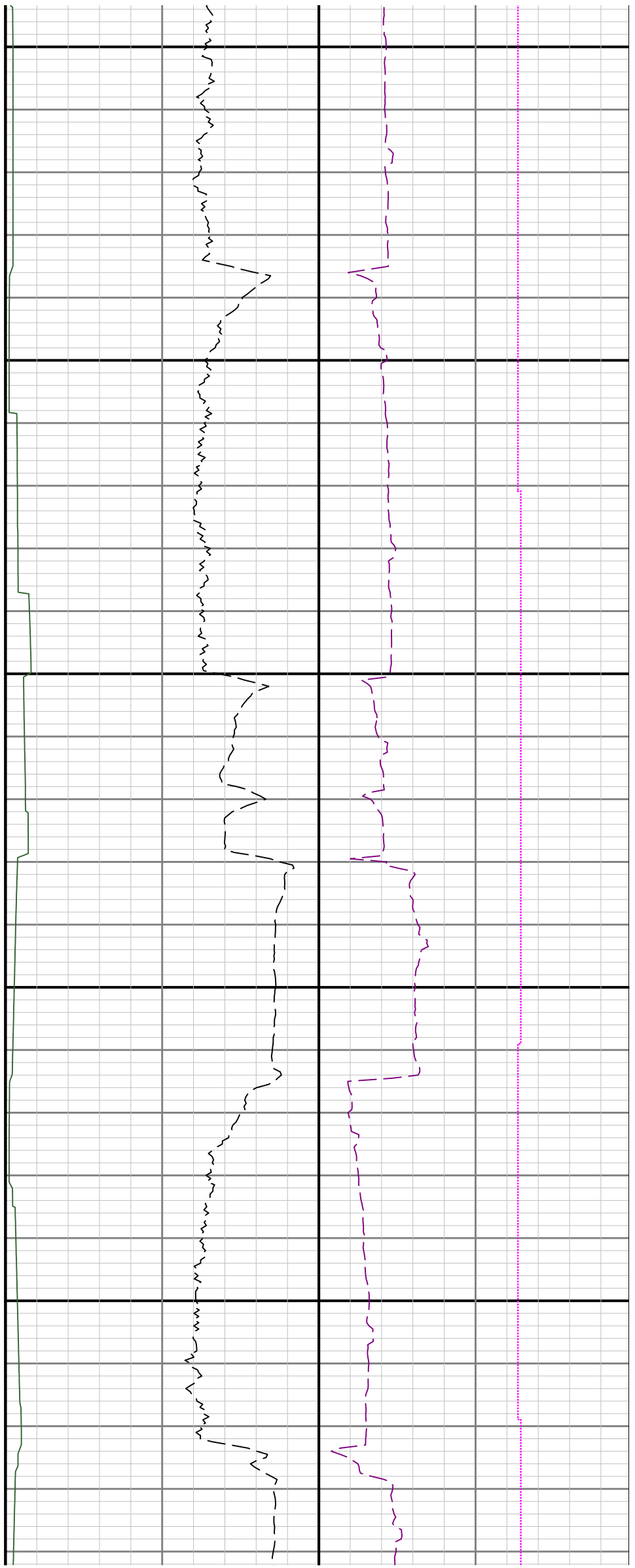


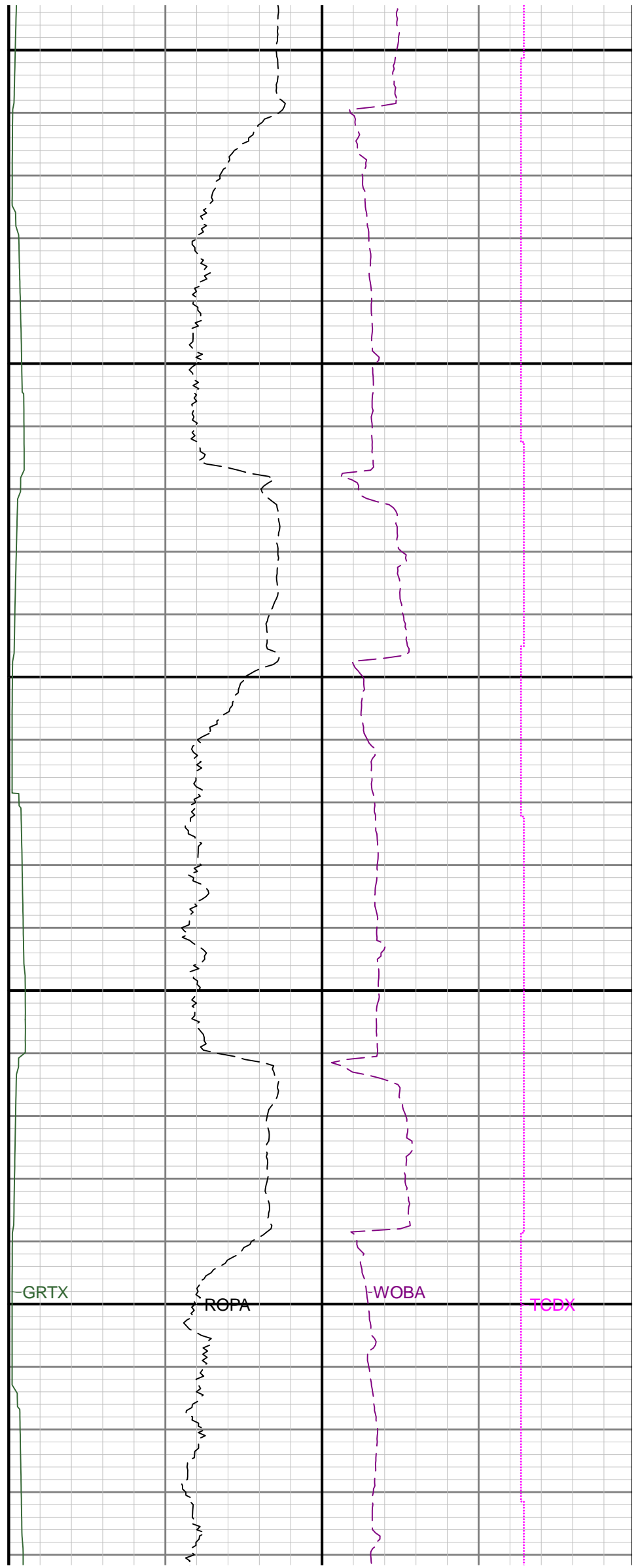
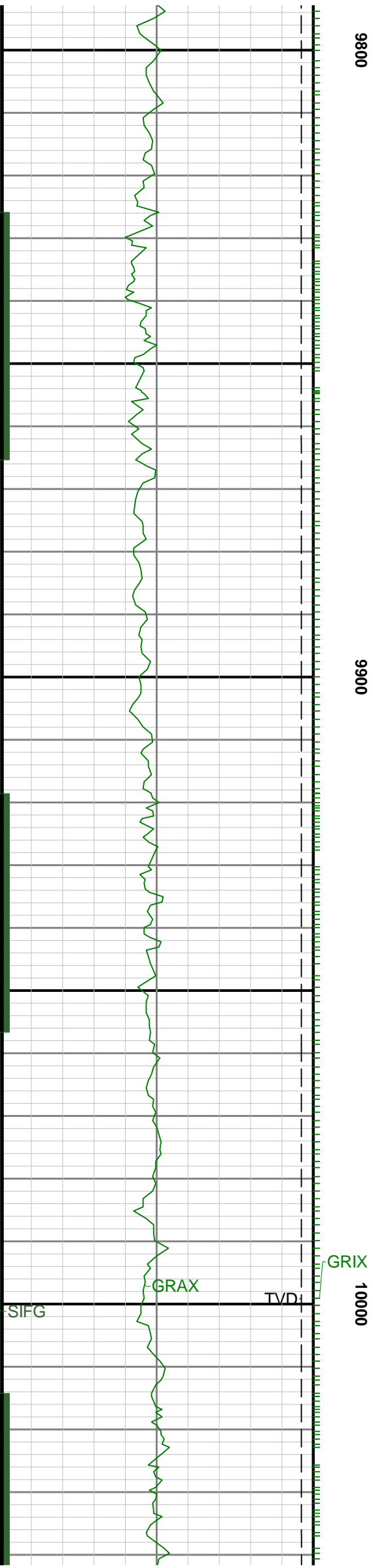




00600

9700

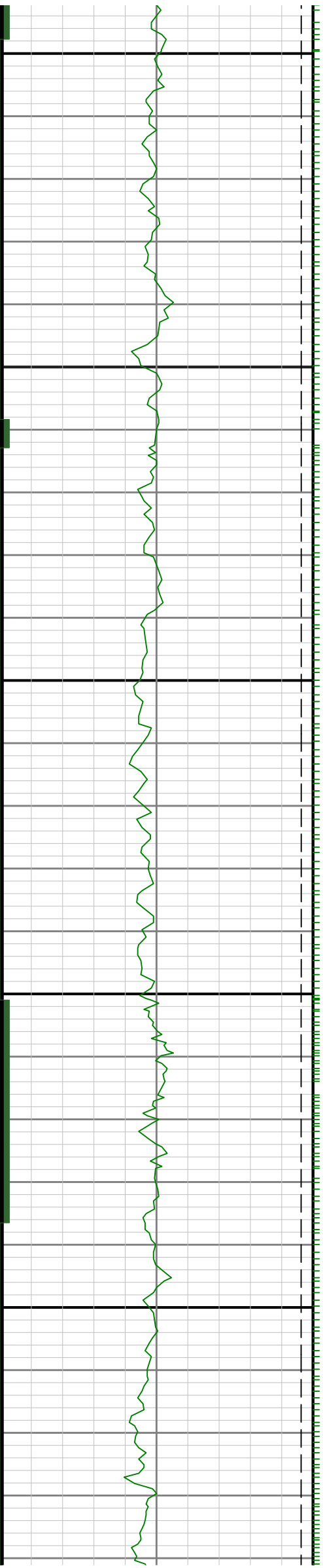


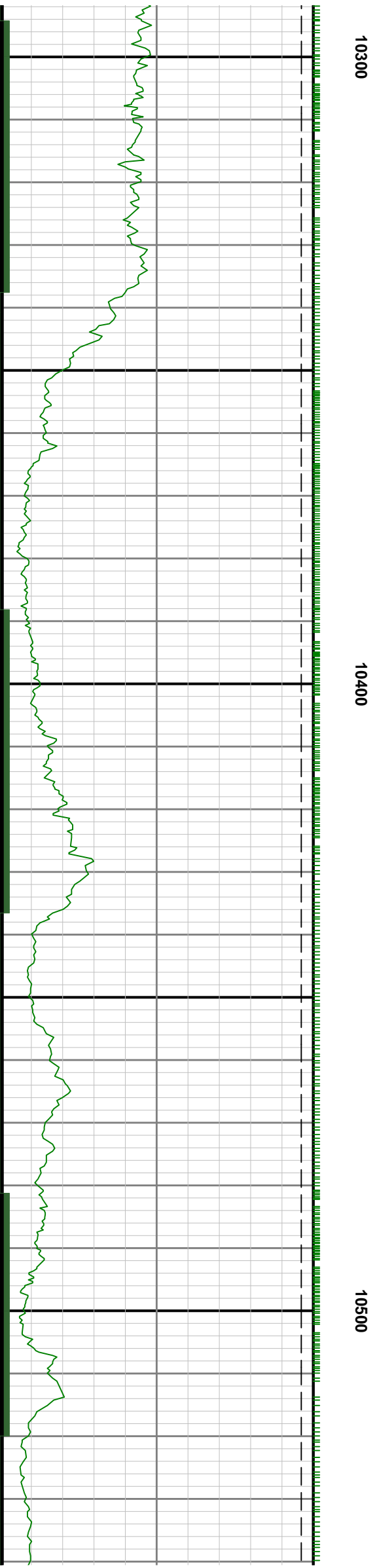


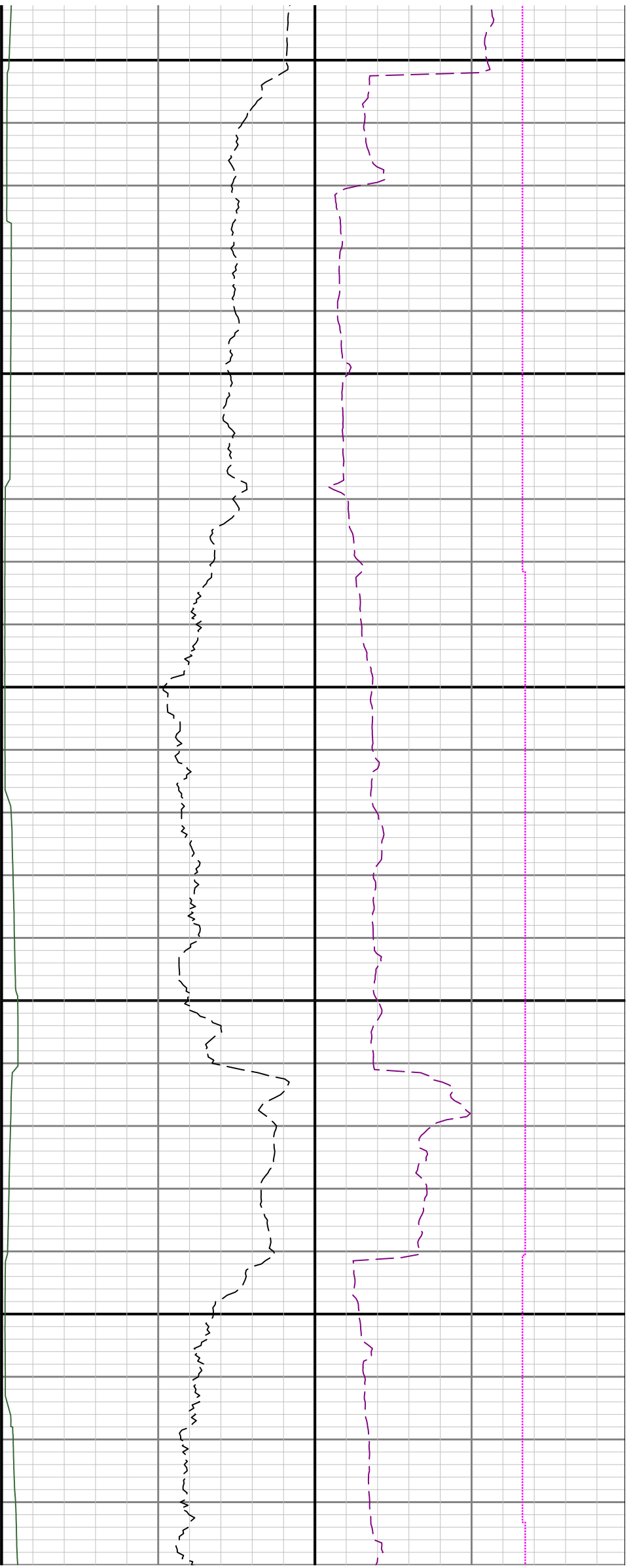


10100

10200

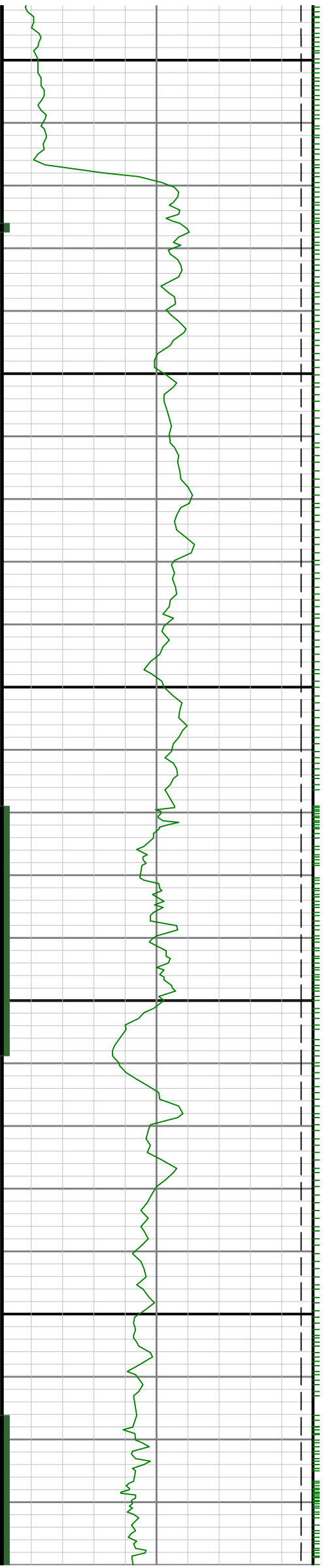


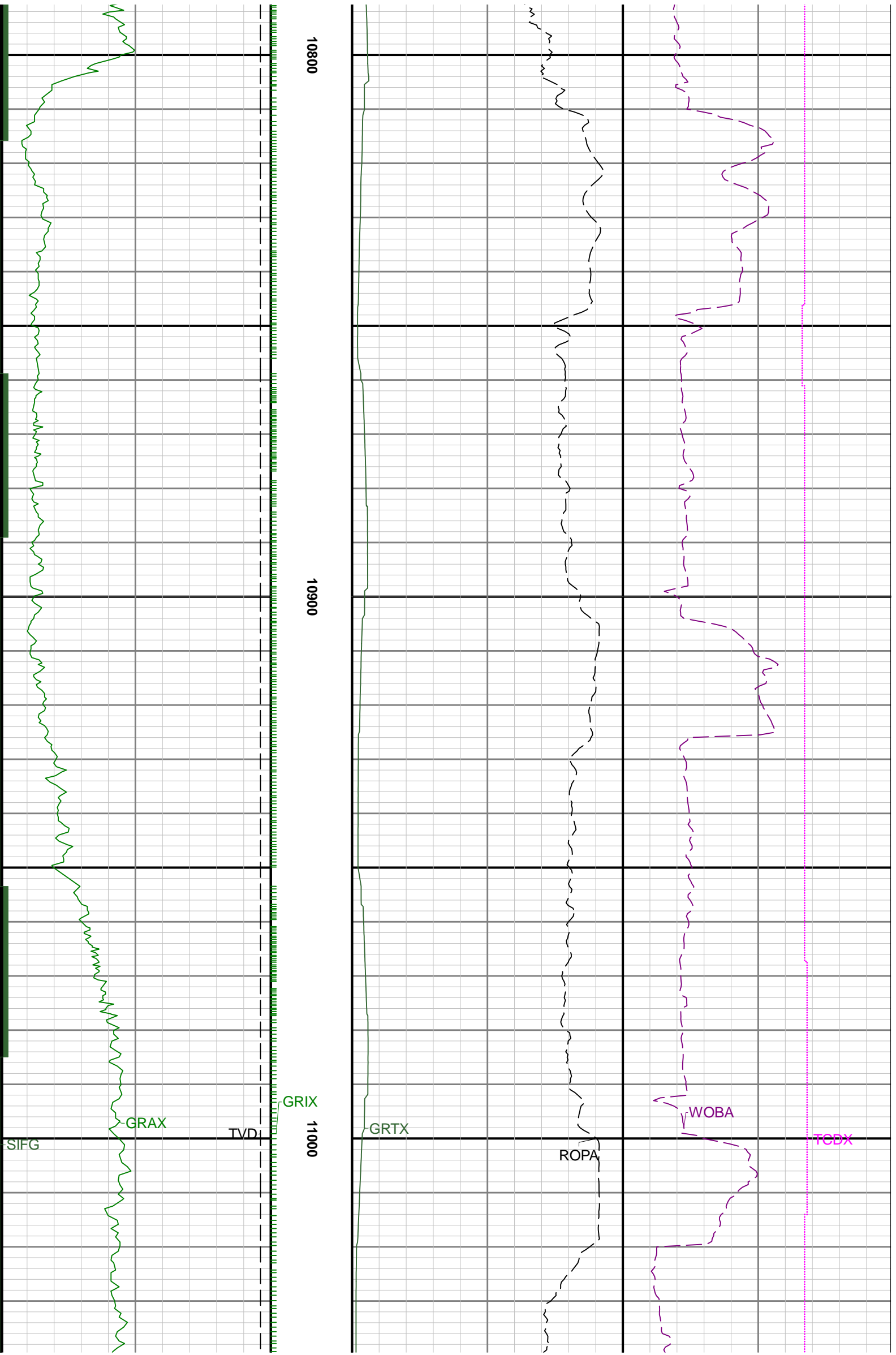


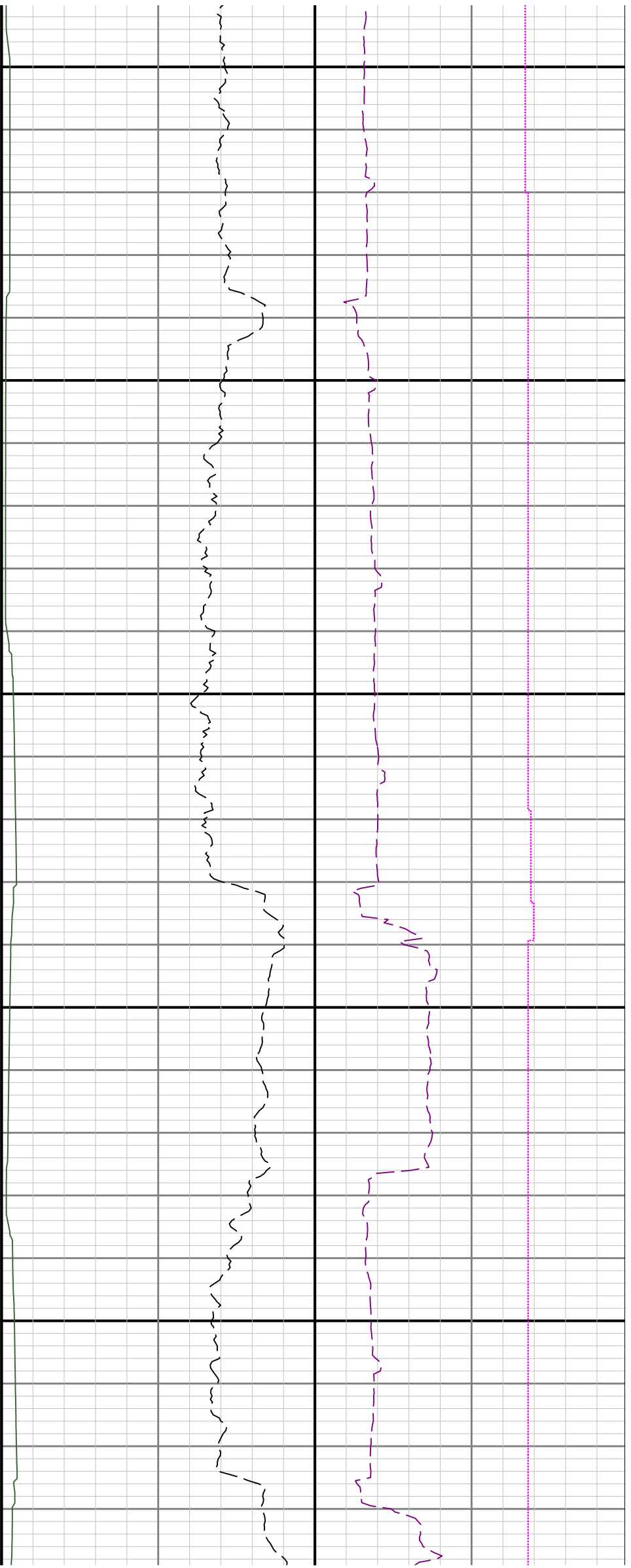


10600

10700

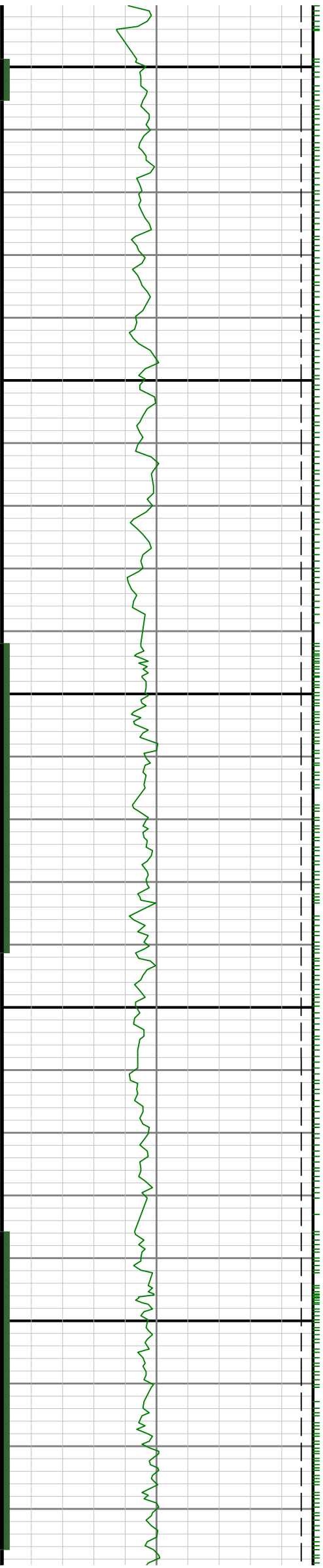


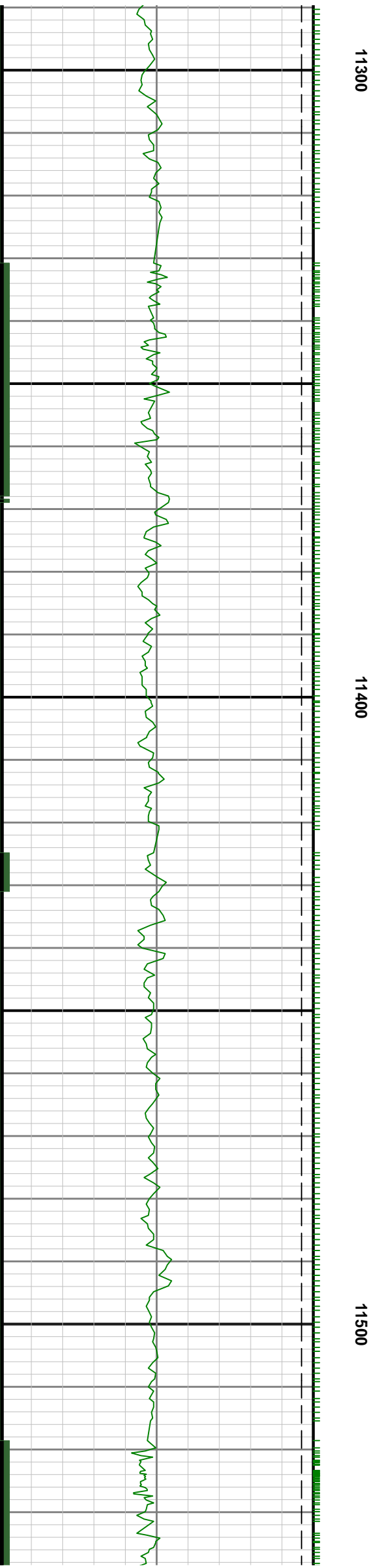
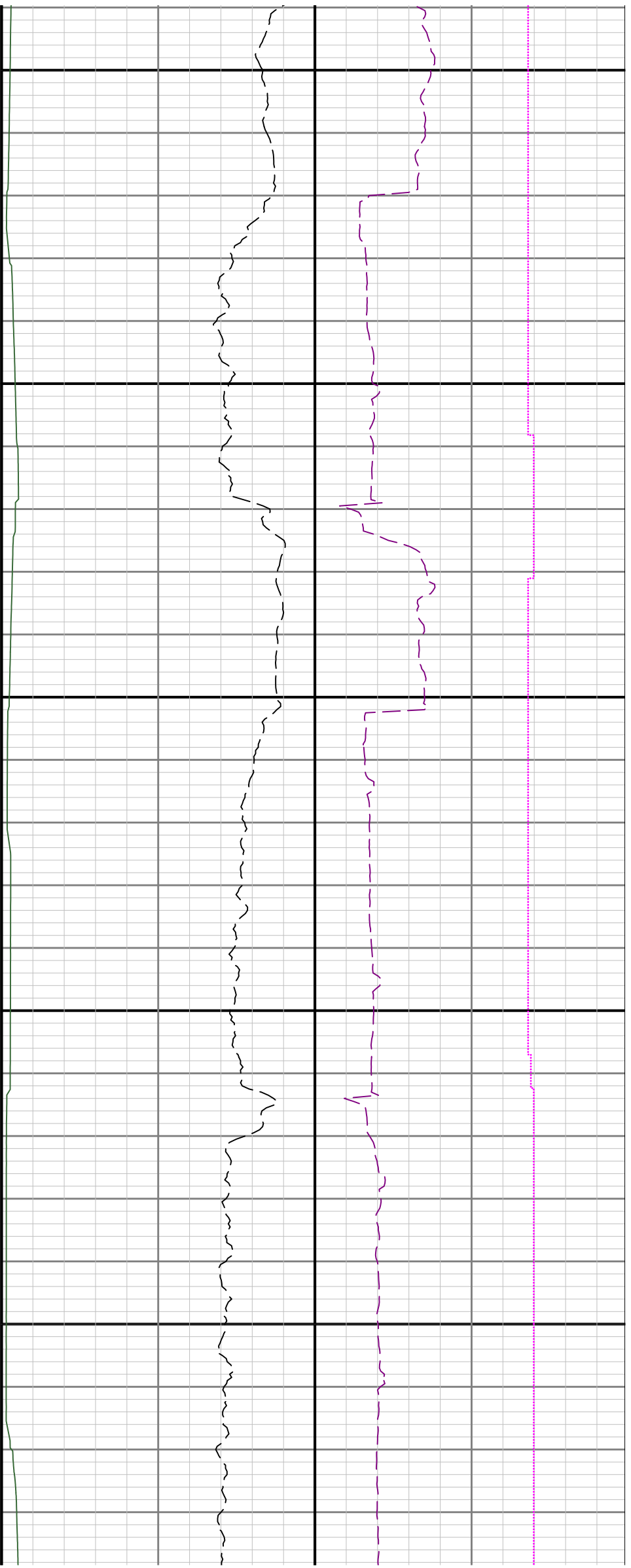


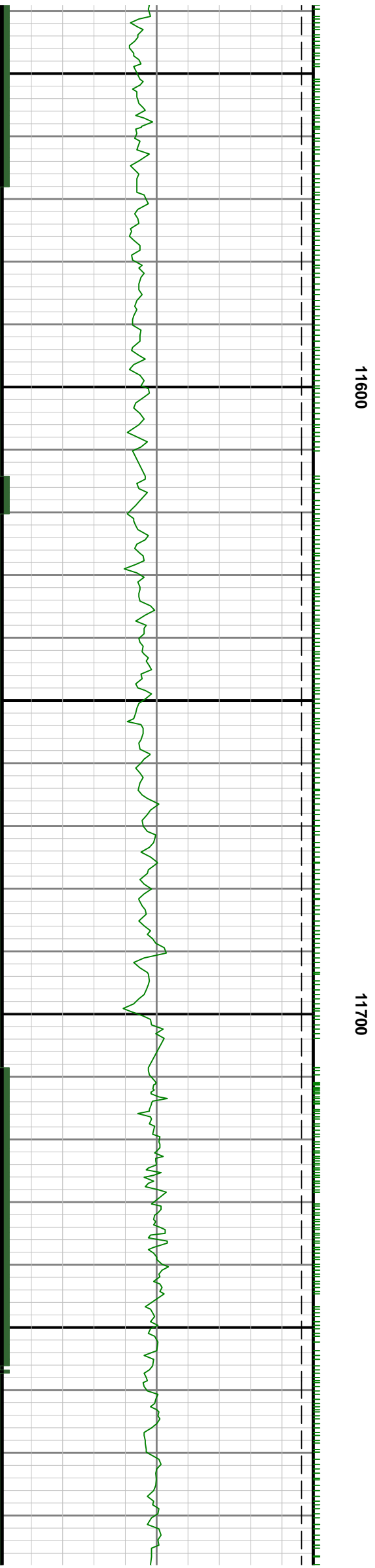
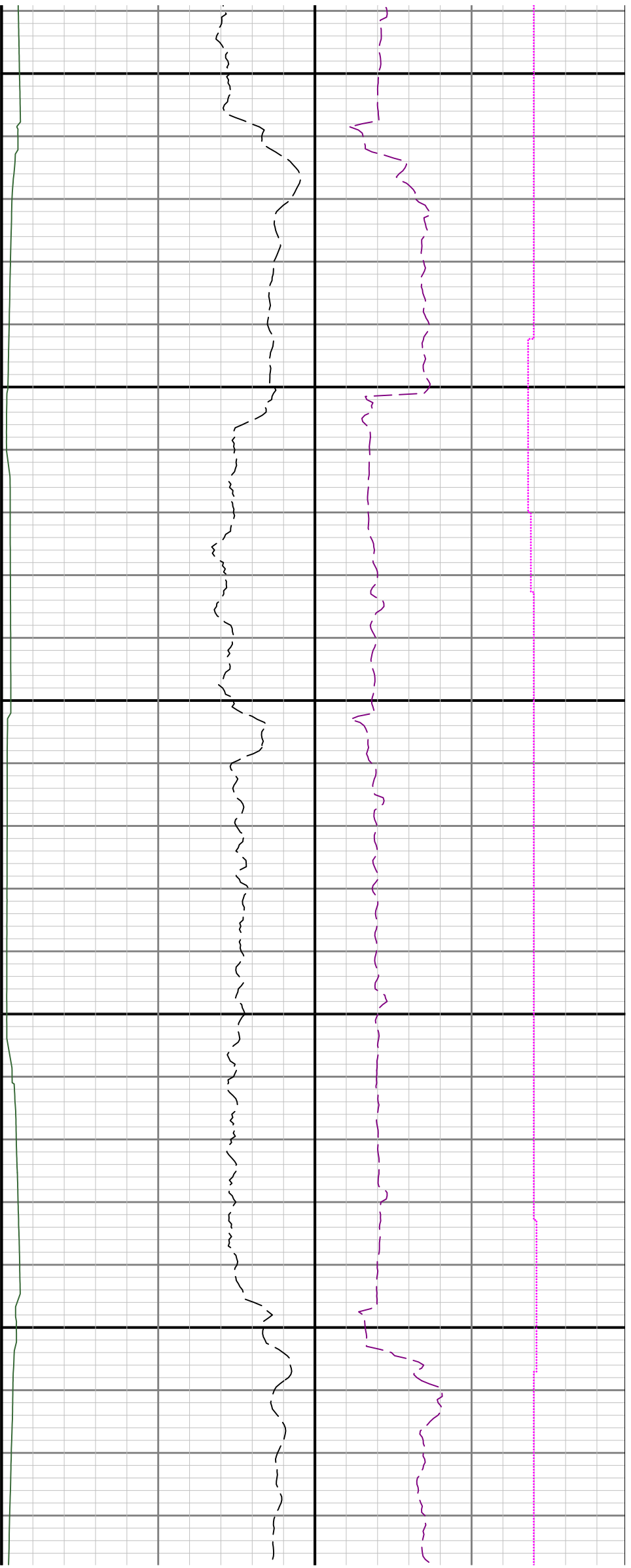


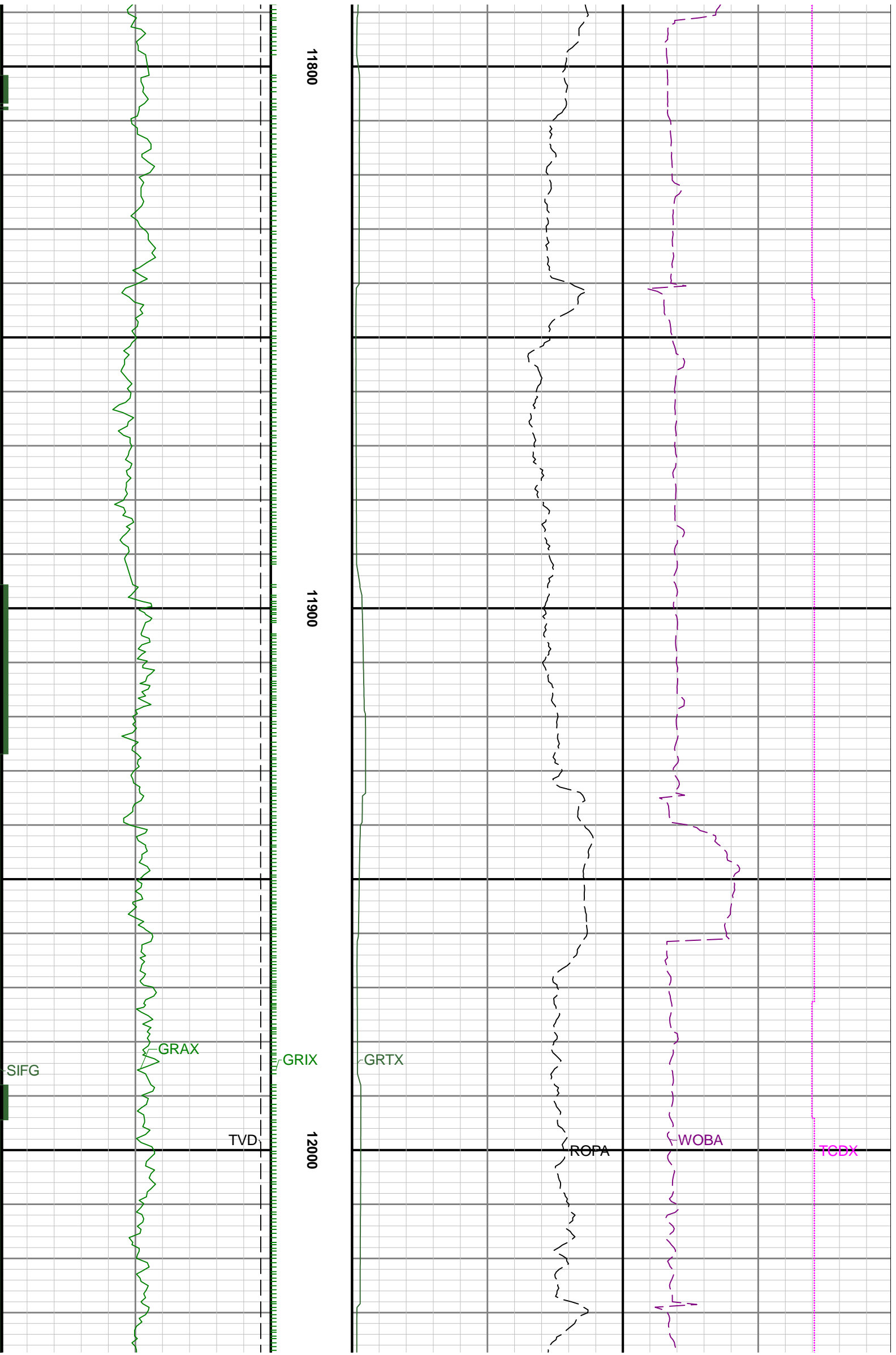
11100

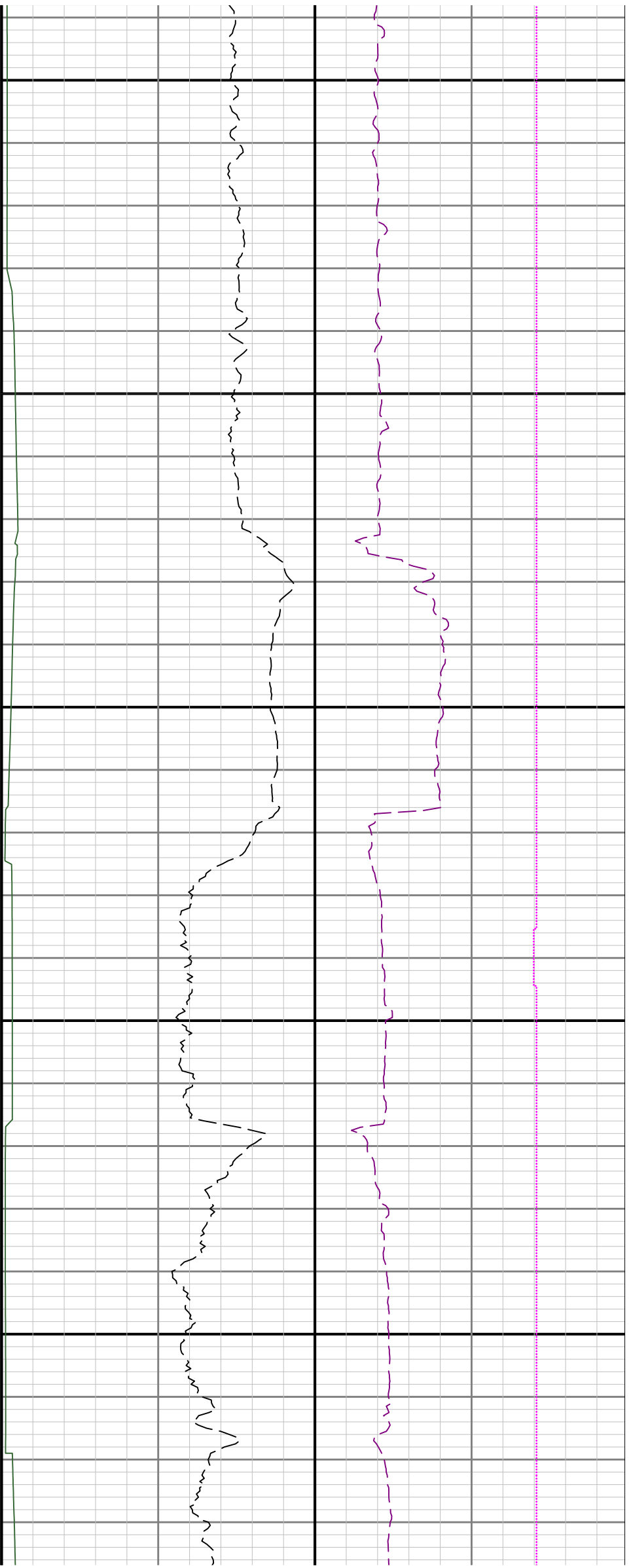
11200





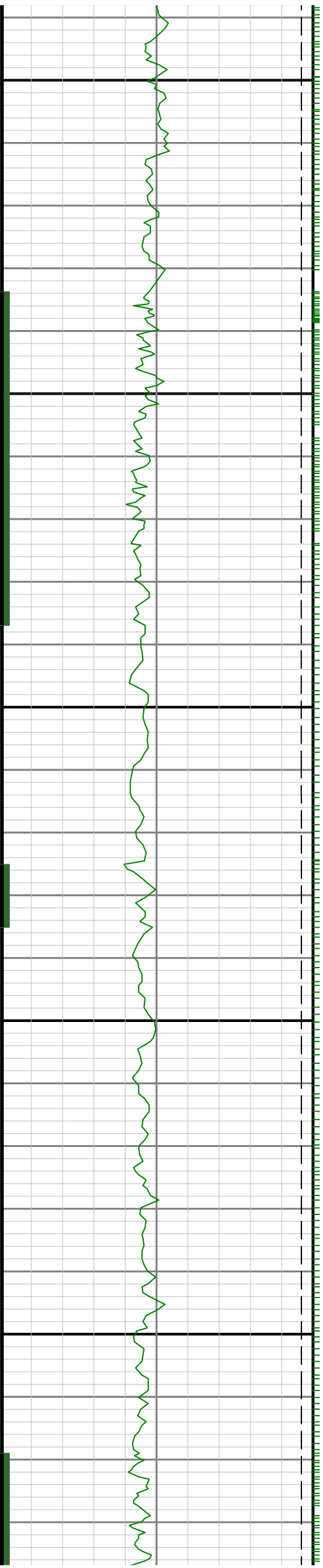


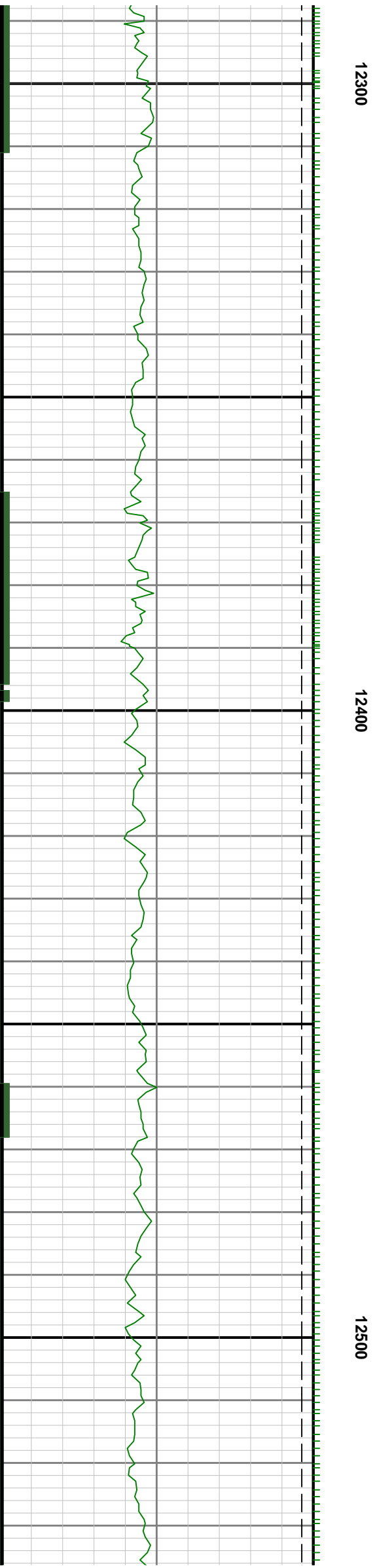
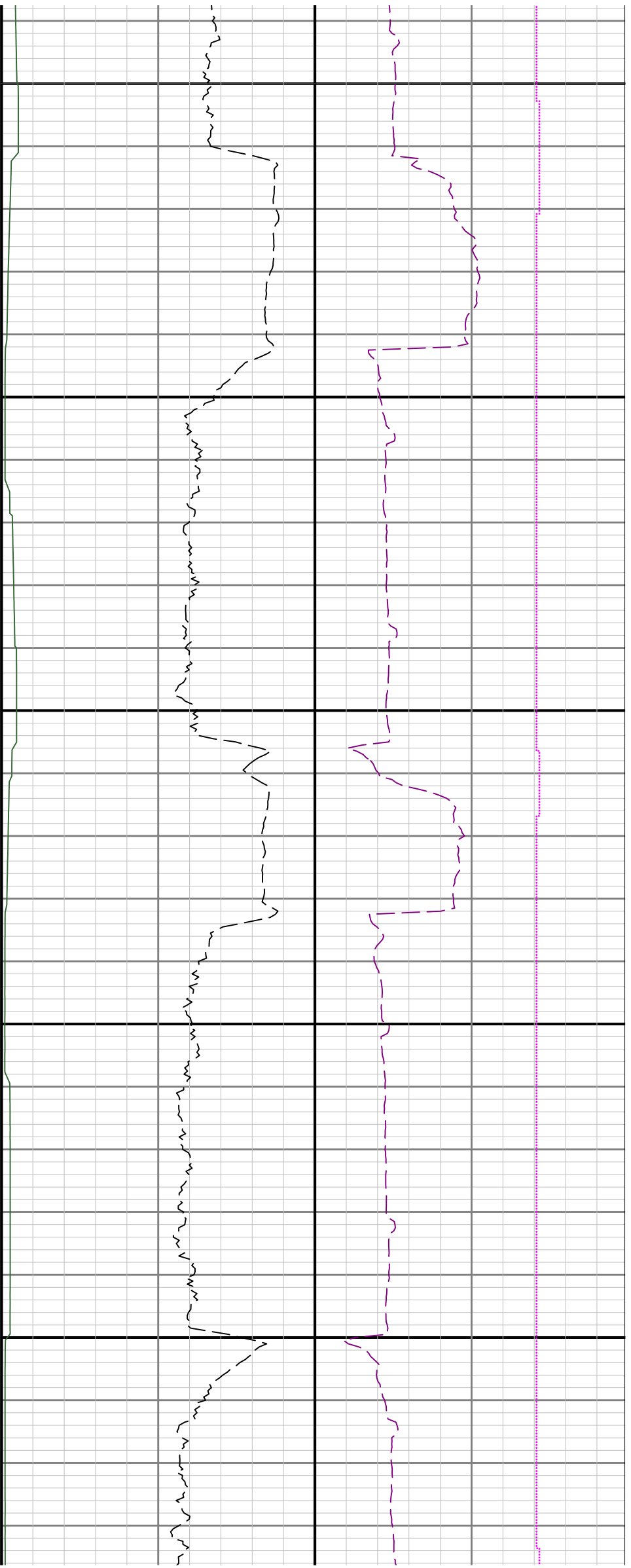




12100

12200







12600

12700

