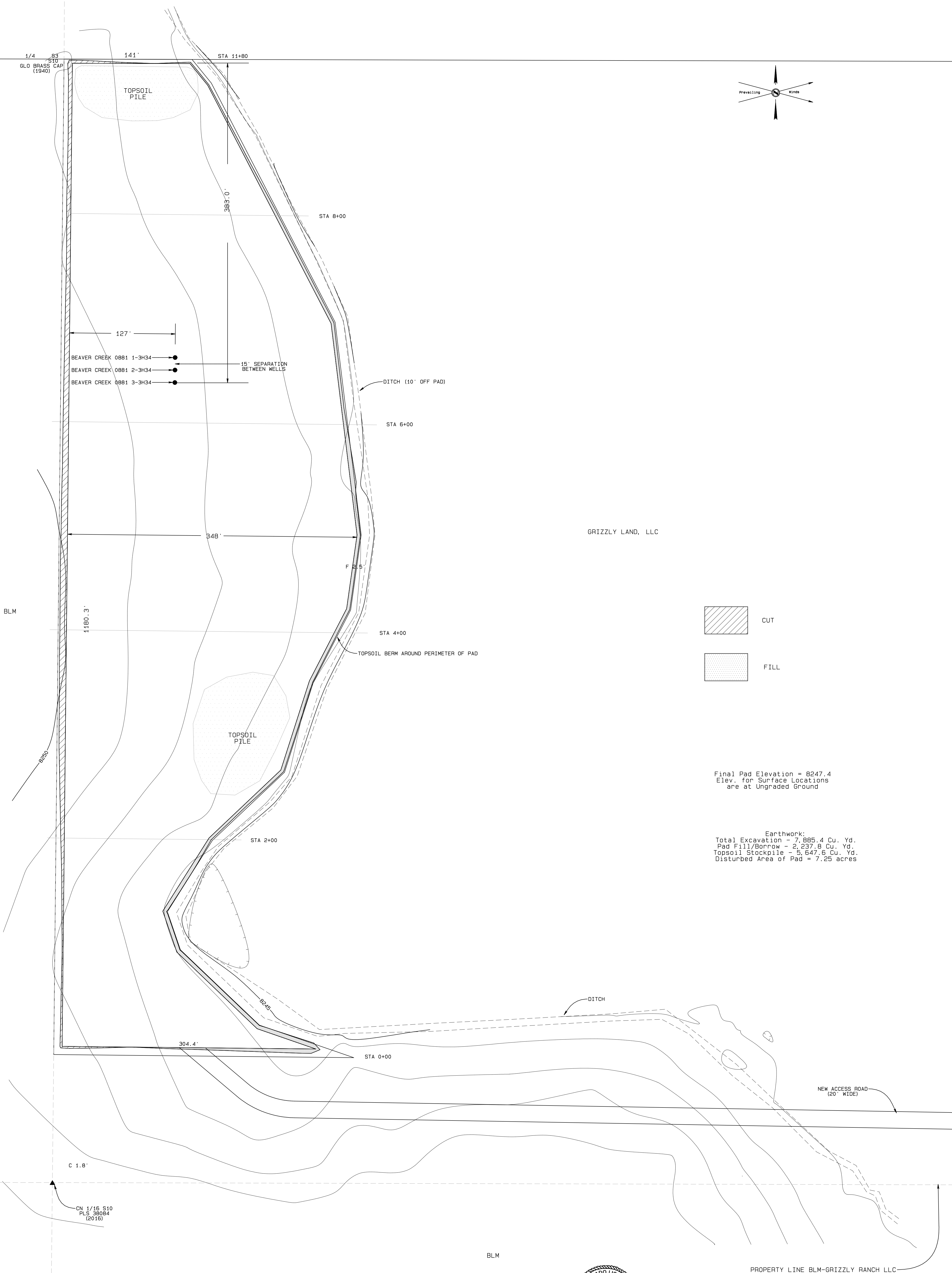
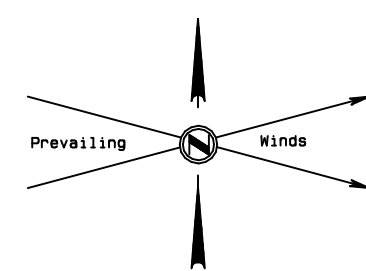


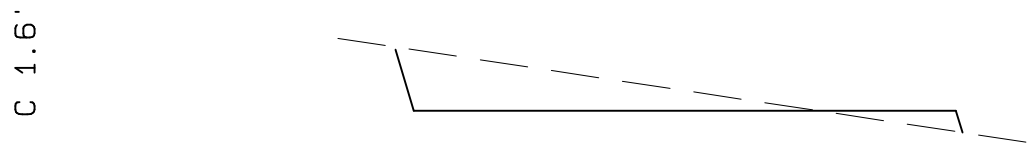
PROPERTY LINE BLM-GRIZZLY LAND LLC



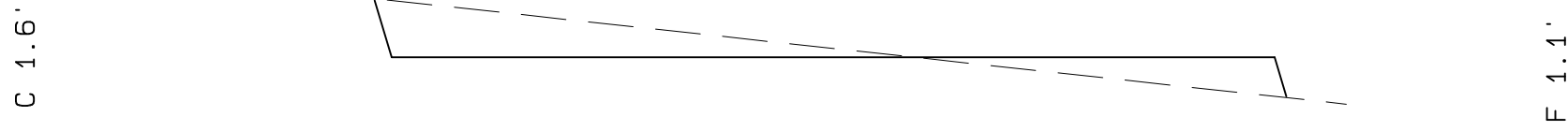
BASIS OF ELEVATION
SPOT ELEVATION AT THE NW CORNER OF SECTION 10,
T7N, R81W, 6TH PM, TAKEN FROM THE COALMONT
QUADRANGLE, USGS 7.5 MIN. QUAD (TOPOGRAPHIC MAP)
WITH SAID ELEVATION MARKED AS BEING 8251 FEET.



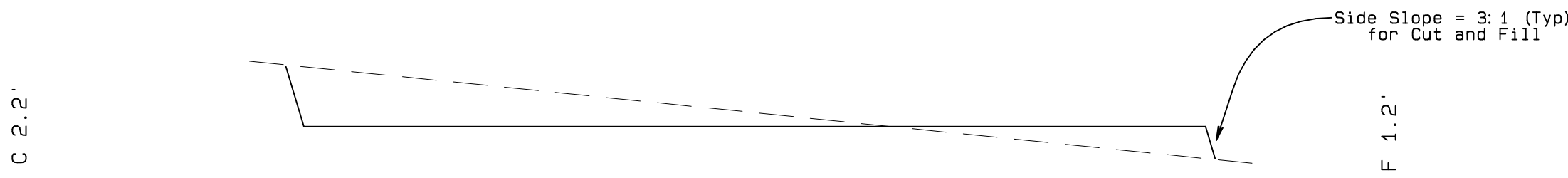
SandRidge Exploration & Production, LLC
CONSTRUCTION LAYOUT CROSS SECTION
Beaver Creek 0/81 S10 Pad
NW1/4NE1/4 of Section 10, T7N,
R81W, 6th P.M., Jackson County, Colorado.



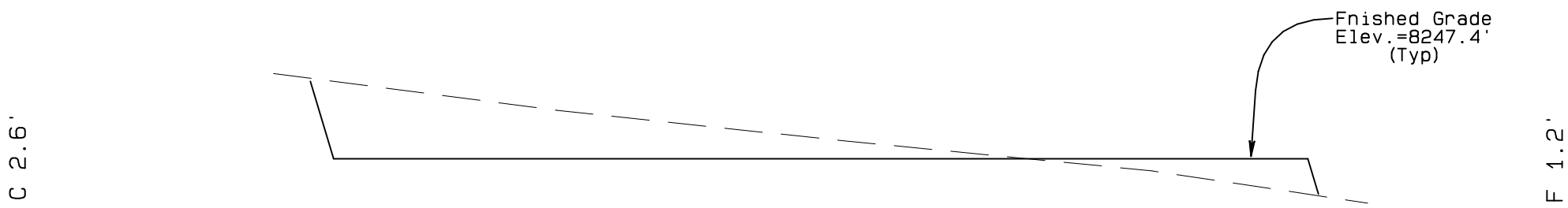
STA 11+80



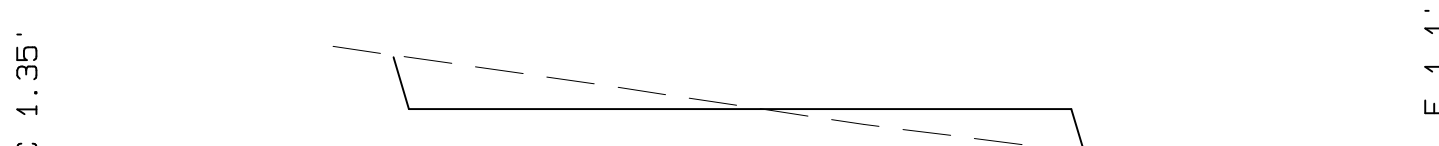
STA 8+00



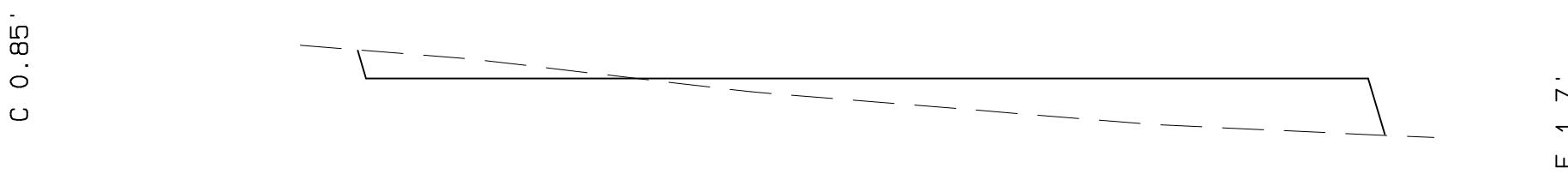
STA 6+00



STA 4+00



STA 2+00

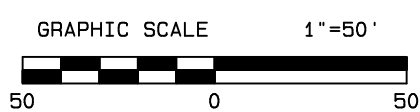


STA 0+00

BASIS OF ELEVATION
SPOT ELEVATION AT THE NW CORNER OF SECTION 10,
T7N, R81W, 6TH PM, TAKEN FROM THE COALMONT
QUADRANGLE, USGS 7.5 MIN QUAD (TOPOGRAPHIC MAP)
WITH SAID ELEVATION MARKED AS BEING 8251 FEET.

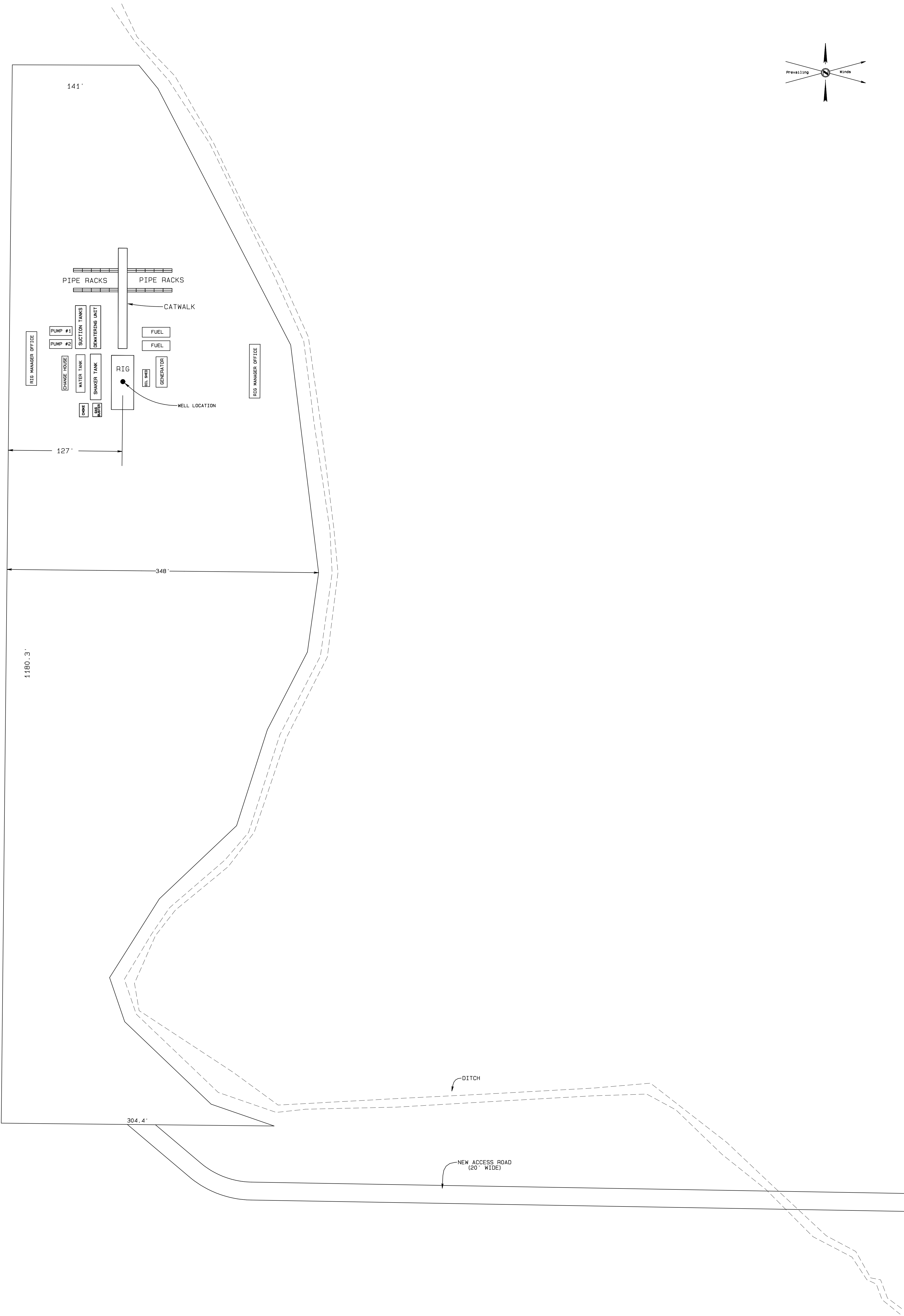
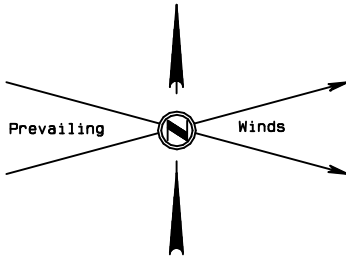


Vertical Exaggeration = 10 Times



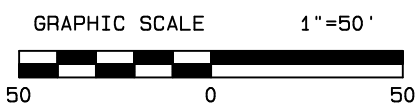
NORTH PARK ENGINEERING & CONSULTING, INC.
PO Box 395 Walden, CO 80480 970-723-3725

SandRidge Exploration & Production, LLC
TYPICAL RIG LAYOUT
Beaver Creek 0781 S10 Pad
NW1/4NE1/4 of Section 10, T7N,
R81W, 6th P.M., Jackson County, Colorado.

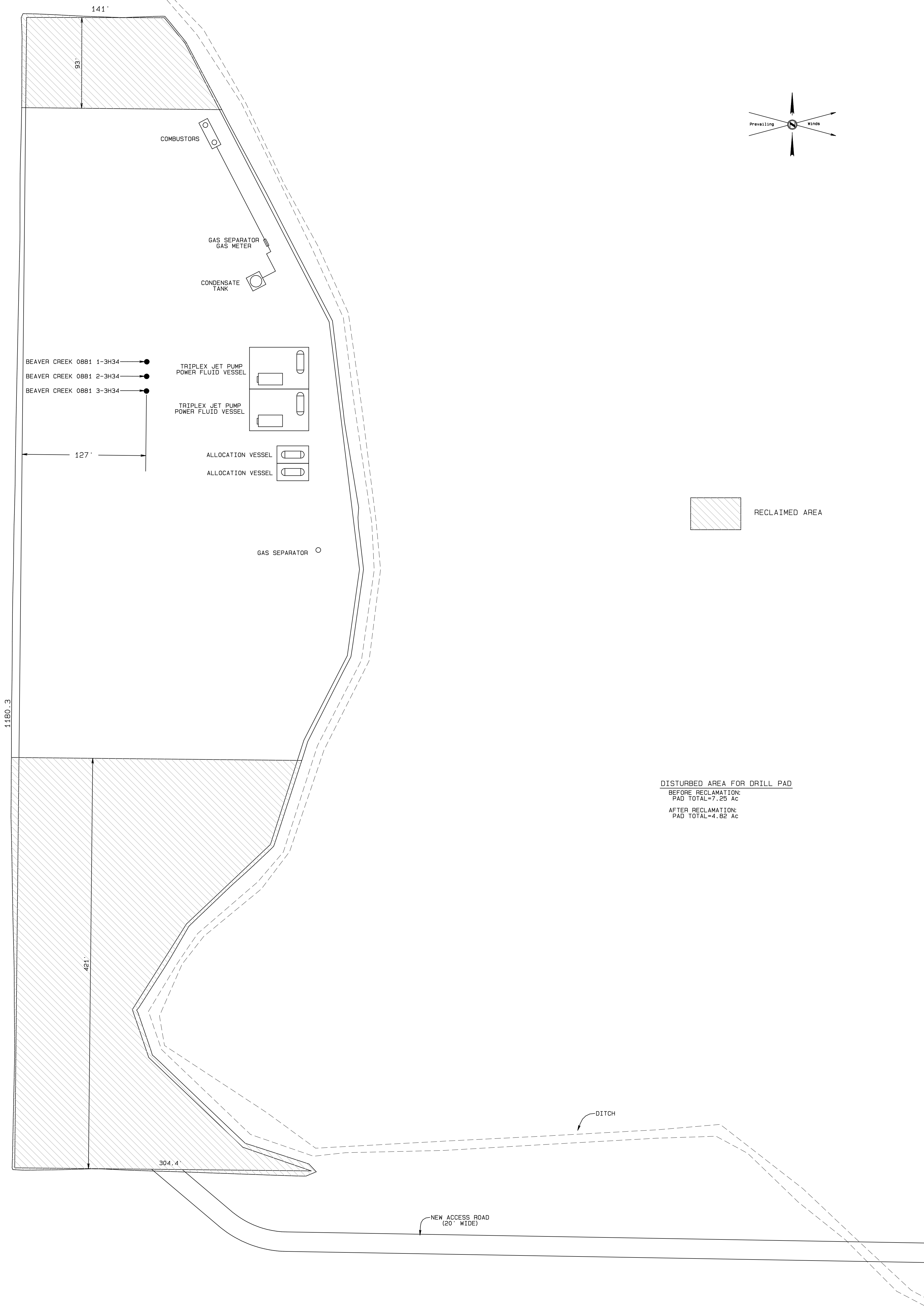


Final Pad Elevation = 8247.4
Elev. for Surface Locations
are at Ungraded Ground

BASIS OF ELEVATION
SPOT ELEVATION AT THE NW CORNER OF SECTION 10,
T7N, R81W, 6TH PM, TAKEN FROM THE COALMONT
QUADRANGLE, USGS 7.5 MIN QUAD (TOPOGRAPHIC MAP)
WITH SAID ELEVATION MARKED AS BEING 8251 FEET.



NORTH PARK ENGINEERING & CONSULTING, INC.
PO Box 395 Walden, CO 80480 970-723-3725



Final Pad Elevation = 8247.4'

BASIS OF ELEVATION
SPOT ELEVATION AT THE NW CORNER OF SECTION 10,
T7N, R81W, 6TH PM, TAKEN FROM THE COALMONT
QUADRANGLE, USGS 7.5 MIN QUAD (TOPOGRAPHIC MAP)
WITH SAID ELEVATION MARKED AS BEING 8251 FEET.

