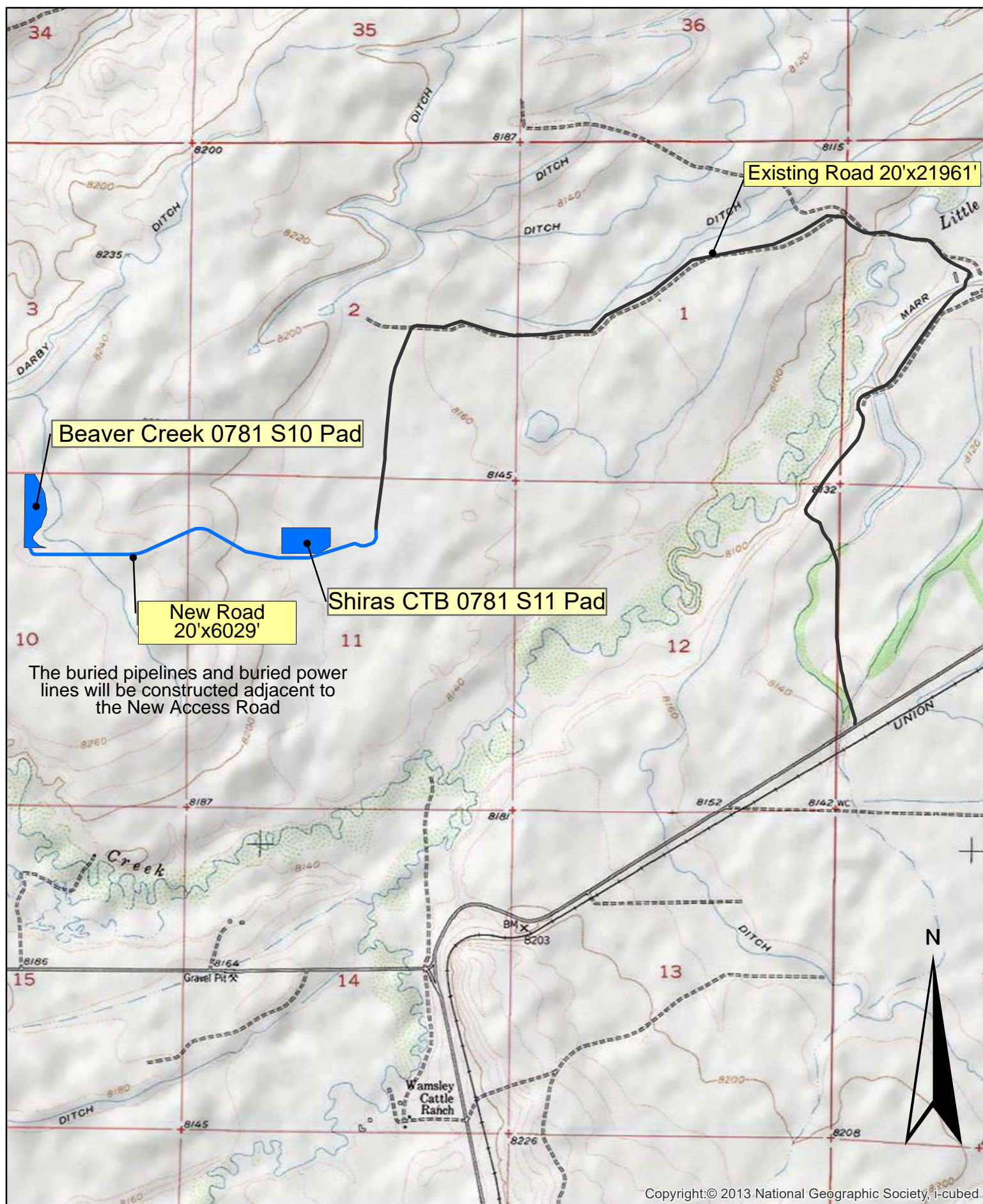
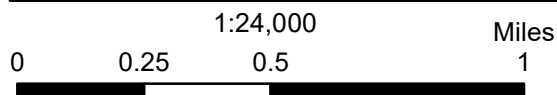


Beaver Creek 0781 S10 24k Map w/ Access



Copyright:© 2013 National Geographic Society, i-cubed



Sandridge Exploration
& Production, LLC

SandRidge Exploration & Production, LLC

ACCESS ROAD DRAWING

Beaver Creek 0781 S10 Pad and Shiras CTB
Sections 1, 2, 10, 11 and 12, T7N, R81W, 6th P.M.,
and Sections 6 and 7, T7N, R80W, 6th P.M.,
Jackson County, Colorado.

34

35

36

31

EXISTING ROAD (IMPROVED TO 20'x21961')

3

2

1

6

Beaver Creek 0781 S10 Pad

Shiras CTB

END OF EXISTING ROAD

NEW ACCESS ROAD
(20'x6029')

10

11

12

7

Jct. w/ JCR 24



GRAPHIC SCALE

1"=2000'



15

14

13

18