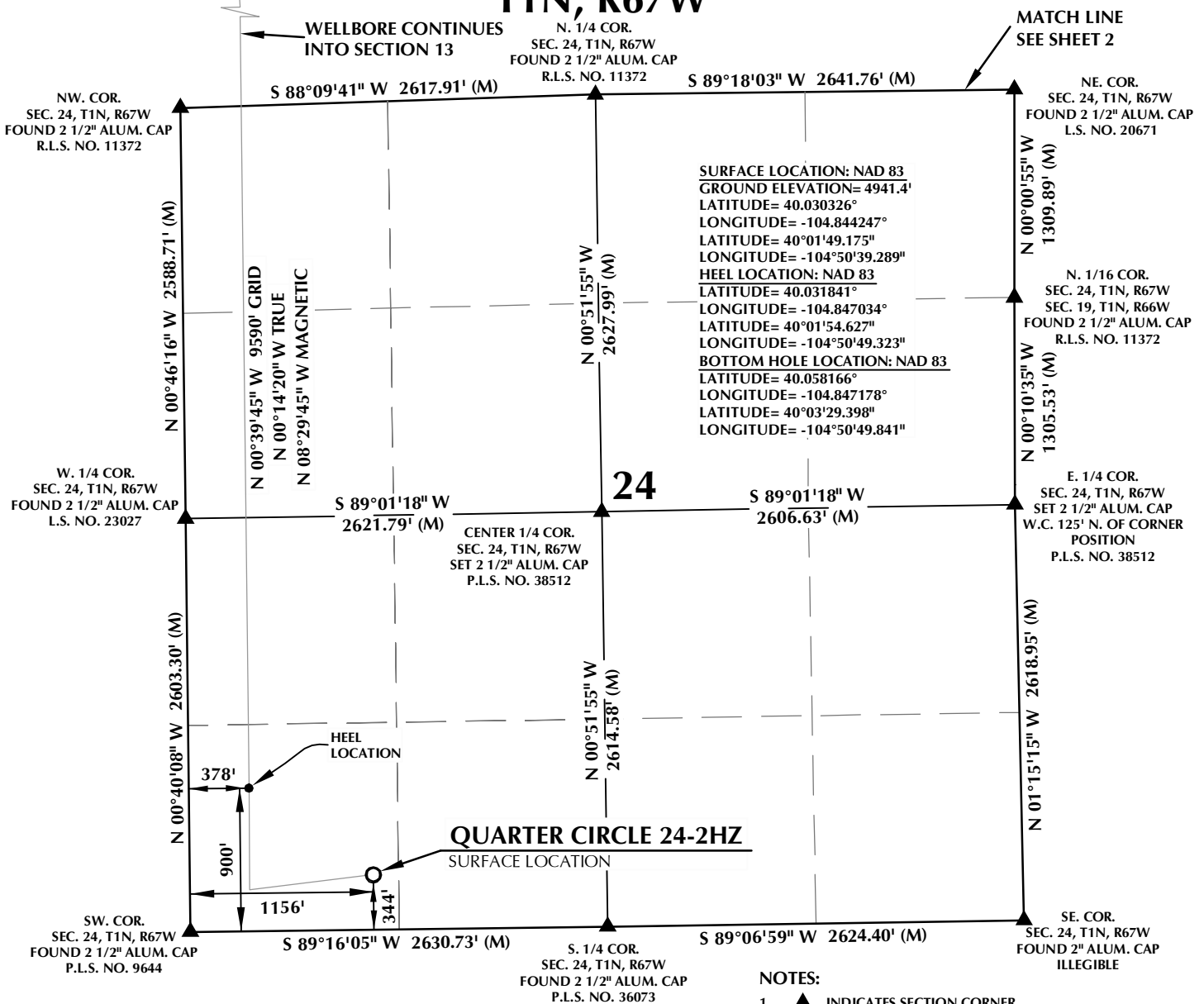


# T1N, R67W



**SURFACE LOCATION: NAD 83**  
GROUND ELEVATION= 4941.4'  
LATITUDE= 40.030326°  
LONGITUDE= -104.844247°  
LATITUDE= 40°01'49.175"  
LONGITUDE= -104°50'39.289"  
**HEEL LOCATION: NAD 83**  
LATITUDE= 40.031841°  
LONGITUDE= -104.847034°  
LATITUDE= 40°01'54.627"  
LONGITUDE= -104°50'49.323"  
**BOTTOM HOLE LOCATION: NAD 83**  
LATITUDE= 40.058166°  
LONGITUDE= -104.847178°  
LATITUDE= 40°03'29.398"  
LONGITUDE= -104°50'49.841"

## NOTES:

- ▲ INDICATES SECTION CORNER
- INDICATES CALCULATED CORNER
- ELEVATION BASED ON NAVD88 (GEOID12B)
- BASIS OF BEARING DERIVED FROM COLORADO COORDINATE SYSTEM OF 1983 NORTH ZONE.
- ALL MEASURED DISTANCES ARE GRID.  
COMBINED SCALE FACTOR: .99973172 CALCULATED FROM THE SE. CORNER OF SECTION 24, T1N, R67W
- OPERATOR: ROB WILSON / PDOP = 1.6
- SEE ADDENDUM TO WELL LOCATION CERTIFICATE FOR EXISTING IMPROVEMENTS WITHIN 500' OF THE WELL PAD.
- WELL FOOTAGES ARE MEASURED AT RIGHT ANGLES TO THE SECTION LINES.
- THE BOTTOM OF HOLE BEARS N00°39'45"W, 9590' FROM THE HEEL LOCATION.



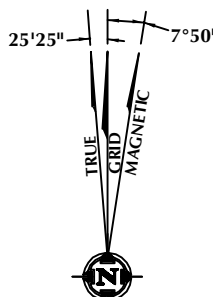
SCALE: 1" = 1000'

## CERTIFICATE OF SURVEYOR:

THIS IS TO CERTIFY THAT THE ABOVE PLAT WAS PREPARED FROM FIELD NOTES OF ACTUAL SURVEY MADE BY ME OR UNDER MY SUPERVISION AND THAT THESE ARE TRUE AND CORRECT TO THE BEST OF MY KNOWLEDGE AND BELIEF. THIS CERTIFICATE DOES NOT REPRESENT A LAND SURVEY PLAT OR IMPROVEMENT SURVEY PLAT AS DEFINED BY C.R.S. 38-51-102 AND CANNOT BE RELIED UPON TO DETERMINE OWNERSHIP.

*Randall K. French*  
PROFESSIONAL LAND SURVEYOR  
COLORADO REGISTRATION NUMBER 38512  
3/28/17

**NOTICE:**  
ACCORDING TO COLORADO STATE LAW YOU MUST COMMENCE ANY LEGAL ACTION BASED UPON ANY DEFECT IN THIS SURVEY WITHIN THREE YEARS AFTER YOU FIRST DISCOVER SUCH DEFECT. IN NO EVENT MAY ANY ACTION BASED UPON ANY DEFECT IN THIS SURVEY BE COMMENCED MORE THAN TEN YEARS FROM THE DATE ON THE CERTIFICATION SHOWN HEREON.

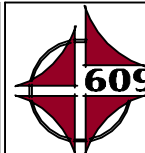


**NOTE:**  
MAGNETIC NORTH IS CURRENT AS OF 2/7/2017.  
MAGNETIC NORTH CHANGES WEST 0°06' PER YEAR.

## WELL PAD - QUARTER CIRCLE 24-3HZ

QUARTER CIRCLE 24-2HZ  
WELL LOCATION CERTIFICATE  
344' FSL & 1156' FWL SWSW (SURFACE)  
900' FSL & 378' FWL SWSW (HEEL)  
LOCATED IN SECTION 24  
49' FNL & 379' FWL NWNW (BOTTOM)  
LOCATED IN SECTION 13  
T1N, R67W, 6TH P.M.  
WELD COUNTY, COLORADO

**Kerr-McGee Oil &  
Gas Onshore L.P.**  
1099 18th Street  
Denver, Colorado 80202



## CONSULTING, LLC

**SHERIDAN OFFICE**  
1095 Saberton Avenue  
Sheridan, Wyoming 82801  
Phone 307-674-0609

**LOVELAND OFFICE**  
1635 Foxtrail Drive, Suite 204  
Loveland, Colorado 80538  
Phone 970-776-4331

DRAFTED BY:	LMO	CHECKED BY:	RKF	SHEET NO:
DATE DRAFTED:	3/28/17	DATE SURVEYED:	12/8/16	1
REVISED:		FILE NAME:	14-102	1 OF 2

# T1N, R67W

E. 1/16 COR.  
SEC. 12 & SEC. 13, T1N, R67W  
FOUND 2 1/2" ALUM. CAP  
R.L.S. NO. 11372

NW. COR.  
SEC. 13, T1N, R67W  
FOUND 2 1/2" ALUM. CAP  
R.L.S. NO. 11372

S 89°02'22" W 1307.33' (M)  
S 89°02'18" W 1307.36' (M)

NE. COR.  
SEC. 13, T1N, R67W  
FOUND 2 1/2" ALUM. CAP  
R.L.S. NO. 11372

N. 1/4 COR.  
SEC. 13, T1N, R67W  
FOUND 2 1/2" ALUM. CAP  
R.L.S. NO. 11372

CENTER 1/4 COR.  
SEC. 13, T1N, R67W  
FOUND 2 1/2" ALUM. CAP  
R.L.S. NO. 11372

E. 1/4 COR.  
SEC. 13, T1N, R67W  
FOUND 2 1/2" ALUM. CAP  
R.L.S. NO. 11372

S. 1/16 COR.  
SEC. 13, T1N, R67W &  
SEC. 18, T1N, R66W  
FOUND 2 1/2" ALUM. CAP  
R.L.S. NO. 11372

SE. COR.  
SEC. 13, T1N, R67W  
FOUND 2 1/2" ALUM. CAP  
R.L.S. NO. 20671

S. 1/4 COR.  
SEC. 13, T1N, R67W  
FOUND 2 1/2" ALUM. CAP  
R.L.S. NO. 11372

W. 1/4 COR.  
SEC. 13, T1N, R67W  
FOUND 2 1/2" ALUM. CAP  
R.L.S. NO. 11372

S. 1/16 COR.  
SEC. 13 & SEC. 14  
T1N, R67W  
SET 2 1/2" ALUM. CAP  
P.L.S. NO. 38512

SW. COR.  
SEC. 13, T1N, R67W  
FOUND 2 1/2" ALUM. CAP  
R.L.S. NO. 11372

N 00°34'38" W 2630.66' (M)

N 00°39'26" W 1360.46' (M)

N 00°39'26" W 1360.46' (M)

S 89°58'44" W 2617.48' (M)

N 00°39'45" W 9590' GRID  
N 00°14'20" W TRUE  
N 08°29'45" W MAGNETIC

N 00°07'39" W 2631.95' (M)

N 00°39'29" W 2637.89' (M)

SURFACE LOCATION: NAD 83  
GROUND ELEVATION= 4941.4'  
LATITUDE= 40.030326°  
LONGITUDE= -104.844247°  
LATITUDE= 40°01'49.175"  
LONGITUDE= -104°50'39.289"  
HEEL LOCATION: NAD 83  
LATITUDE= 40.031841°  
LONGITUDE= -104.847034°  
LATITUDE= 40°01'54.627"  
LONGITUDE= -104°50'49.323"  
BOTTOM HOLE LOCATION: NAD 83  
LATITUDE= 40.058166°  
LONGITUDE= -104.847178°  
LATITUDE= 40°03'29.398"  
LONGITUDE= -104°50'49.841"

N 00°41'06" W 2632.35' (M)

N 00°37'29" W 1324.66' (M)

N 00°45'24" W 1324.66' (M)

S 89°18'03" W 2641.76' (M)

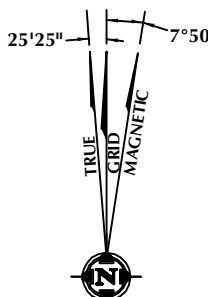
MATCH LINE  
SEE SHEET 1

## CERTIFICATE OF SURVEYOR:

THIS IS TO CERTIFY THAT THE ABOVE PLAT WAS PREPARED FROM FIELD NOTES OF ACTUAL SURVEY MADE BY ME OR UNDER MY SUPERVISION AND THAT THESE ARE TRUE AND CORRECT TO THE BEST OF MY KNOWLEDGE AND BELIEF. THIS CERTIFICATE DOES NOT REPRESENT A LAND SURVEY PLAT OR IMPROVEMENT SURVEY PLAT AS DEFINED BY C.R.S. 38-51-102 AND CANNOT BE RELIED UPON TO DETERMINE OWNERSHIP.

*Randall K. French*  
RANDALL K. FRENCH  
PROFESSIONAL LAND SURVEYOR  
COLORADO REGISTRATION NUMBER 38512

NOTICE:  
ACCORDING TO COLORADO STATE LAW YOU MUST COMMENCE ANY LEGAL ACTION BASED UPON ANY DEFECT IN THIS SURVEY WITHIN THREE YEARS AFTER YOU FIRST DISCOVER SUCH DEFECT. IN NO EVENT MAY ANY ACTION BASED UPON ANY DEFECT IN THIS SURVEY BE COMMENCED MORE THAN TEN YEARS FROM THE DATE ON THE CERTIFICATION SHOWN HEREON.



NOTE:  
MAGNETIC NORTH IS CURRENT AS OF 2/7/2017.  
MAGNETIC NORTH CHANGES WEST 0°06' PER YEAR.

## NOTES:

- ▲ INDICATES SECTION CORNER
- INDICATES CALCULATED CORNER
- ELEVATION BASED ON NAVD88 (GEOID12B)
- BASIS OF BEARING DERIVED FROM COLORADO COORDINATE SYSTEM OF 1983 NORTH ZONE.
- ALL MEASURED DISTANCES ARE GRID.  
COMBINED SCALE FACTOR: .99973172 CALCULATED FROM THE SE. CORNER OF SECTION 24, T1N, R67W
- OPERATOR: ROB WILSON / PDOP = 1.6
- SEE ADDENDUM TO WELL LOCATION CERTIFICATE FOR EXISTING IMPROVEMENTS WITHIN 500' OF THE WELL PAD.
- WELL FOOTAGES ARE MEASURED AT RIGHT ANGLES TO THE SECTION LINES.
- THE BOTTOM OF HOLE BEARS N00°39'45"W, 9590' FROM THE HEEL LOCATION.



SCALE: 1" = 1000'

## WELL PAD - QUARTER CIRCLE 24-3HZ

QUARTER CIRCLE 24-2HZ  
WELL LOCATION CERTIFICATE  
344' FSL & 1156' FWL SWSW (SURFACE)  
900' FSL & 378' FWL SWSW (HEEL)  
LOCATED IN SECTION 24  
49' FNL & 379' FWL NWNW (BOTTOM)  
LOCATED IN SECTION 13  
T1N, R67W, 6TH P.M.  
WELD COUNTY, COLORADO

**Kerr-McGee Oil &  
Gas Onshore L.P.**  
1099 18th Street  
Denver, Colorado 80202

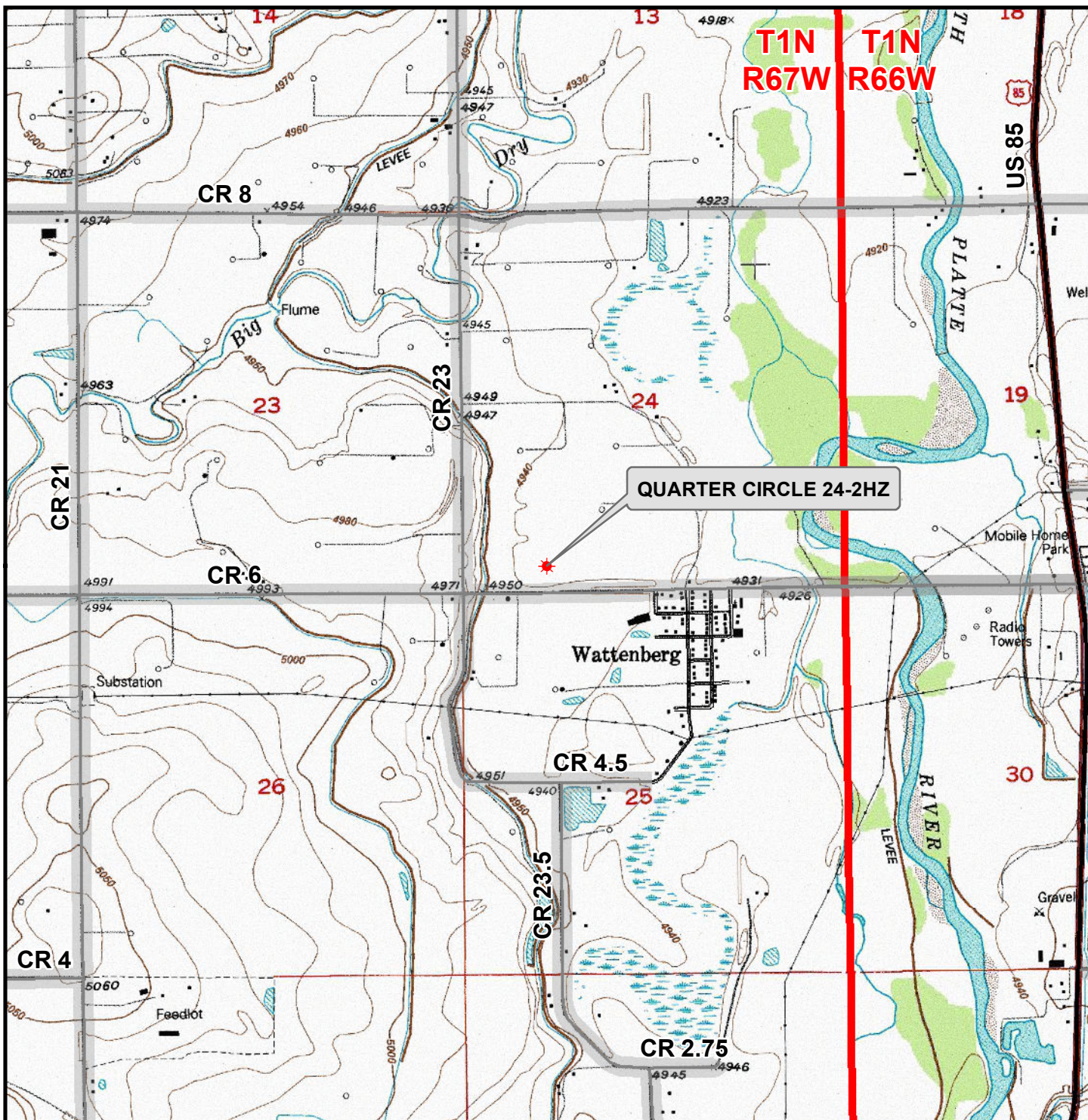


## CONSULTING, LLC

SHERIDAN OFFICE  
1095 Saberton Avenue  
Sheridan, Wyoming 82801  
Phone 307-674-0609

LOVELAND OFFICE  
1635 Foxtrail Drive, Suite 204  
Loveland, Colorado 80538  
Phone 970-776-4331

DRAFTED BY:	LMO	CHECKED BY:	RKF	SHEET NO:
DATE DRAFTED:	3/28/17	DATE SURVEYED:	12/8/16	2
REVISED:		FILE NAME:	14-102	2 OF 2



### Legend

- ★ Well - Fee - Proposed   
  Road - Primitive - Existing   
  Road - County - Existing  
 Road - Improved - Existing   
 Road - Highway - Existing

### WELL PAD - QUARTER CIRCLE 24-3HZ

**GENERAL LOCATION MAP**  
**QUARTER CIRCLE 24-2HZ**  
**LOCATED IN SECTION 24**  
**T1N, R67W, 6th P.M.**  
**WELD COUNTY, COLORADO**

## Kerr-McGee Oil & Gas Onshore L.P.

1099 18th Street  
 Denver, Colorado 80202



### CONSULTING, LLC

**SHERIDAN OFFICE**    **LOVELAND OFFICE**  
 1095 Saberton Avenue    1635 Foxtail Drive, Suite 204  
 Sheridan, Wyoming 82801    Loveland, Colorado 80538  
 Phone 307-674-0609    Phone 970-776-4331

SCALE: 1" = 2,000ft

NAD83 CO-Nft

DRAWN: DP

DATE: 30 Mar 2017

REVISED:

DATE:

