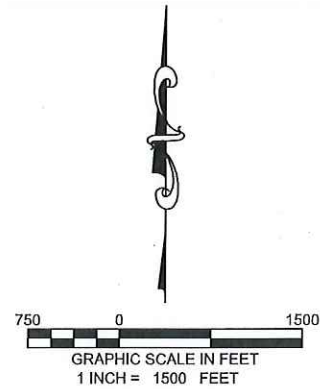
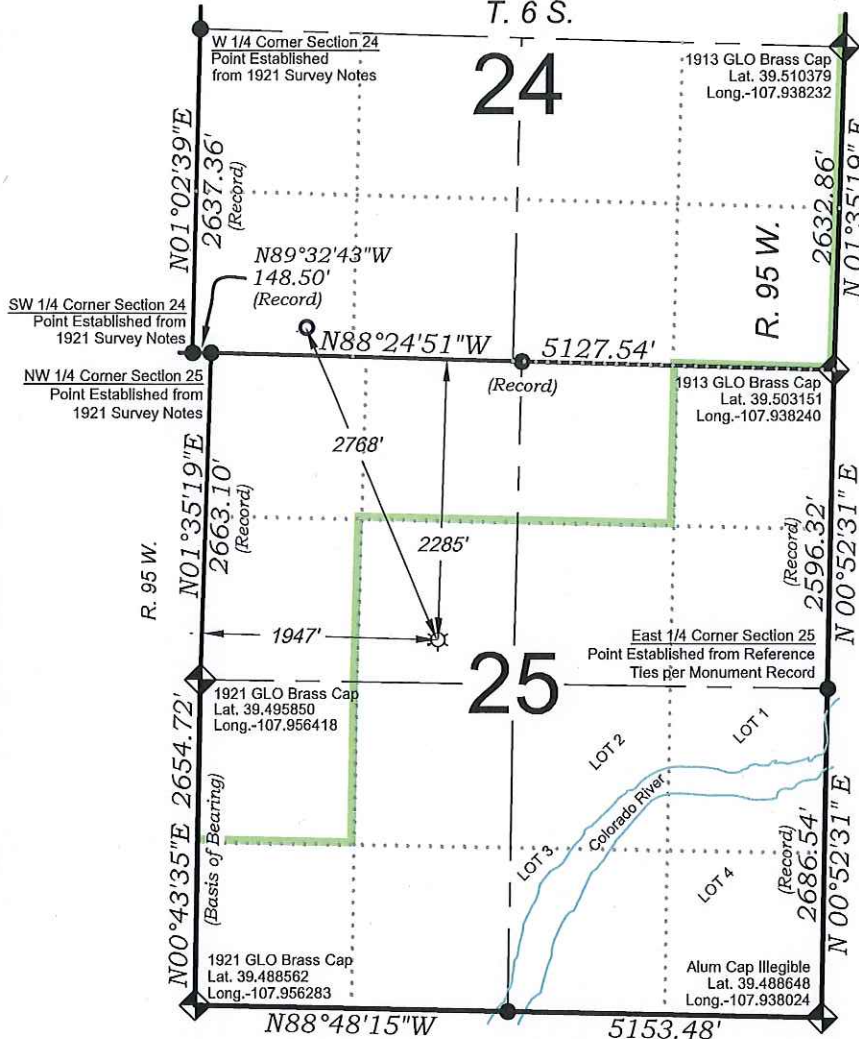


Tri State Trucking PA 514-24

T. 6 S.



### SURFACE HOLE LOCATION

2285 FNL, 1947 FWL

Lat.: 39.496884°

Long.: -107.949516°

N.: 1615187.5(COSP)

E.: 2308837.8(COSP)

### BOTTOM HOLE LOCATION

228 FSL, 938 FWL

Lat.: 39.503786°

Long.: -107.953622°

N.: 1617731.7(COSP)

E.: 2307747.6(COSP)

PROPOSED PAD ELEV.: 5223.8  
EXISTING GROUND ELEV.: 5223.8

SEE CONSTRUCTION LAYOUT PLAT  
FOR VISIBLE IMPROVEMENTS  
WITHIN 500' OF THIS LOCATION

### SURVEYORS STATEMENT

I, MICHAEL J. LANGHORNE, A REGISTERED LAND SURVEYOR IN THE STATE OF COLORADO DO HEREBY CERTIFY THAT THE SURVEY SHOWN HEREON WAS PREPARED UNDER MY DIRECT SUPERVISION AND HAS BEEN STAKED ON THE GROUND AS SHOWN ON THE PLAT AND CHECKING THAT THIS MAP IS A TRUE REPRESENTATION THEREOF.

*Michael J. Langhorne*  
36572

MICHAEL J. LANGHORNE, COLORADO REGISTRATION NO. 36572  
FOR AND ON BEHALF OF  
BOOKCLIFF SURVEY SERVICES, INC.

### REFERENCES

- 1) Resurvey and Extension Survey T. 6 S., R. 95 W., 6th P.M. (GLO Plats)
- 2) U.S.G.S. QUAD: RULISON and ANVIL POINTS, CO

136 East Third Street  
Rifle, Colorado 81650  
Ph. (970) 625-2720  
Fax (970) 625-2773



**BOOKCLIFF**  
Survey Services, Inc.

SCALE: 1" = 1500'  
DATE: 4/12/17  
PLAT: 1 of 1  
PROJECT: TEP Valley  
DFT: WK

### - LEGEND -

FIELD LOCATED SECTION  
MONUMENTS AS DESCRIBED

FIELD SURVEYED  
WELL LOCATION

CALCULATED BOTTOM  
HOLE LOCATION

CALCULATED SECTION  
CORNER LOCATION

### NOTES

- 1) ELEVATIONS BASED ON N.A.V.D. 1988 PUBLISHED COORDINATES.
- 2) LATITUDES AND LONGITUDES ARE BASE ON NAD 83, PUBLISHED COORDINATES
- 3) STATE PLANE COORDINATES ARE BASED ON COLORADO CENTRAL ZONE, U.S. SURVEY FEET.
- 4) ELEVATION MASK SET TO 15°
- 5) GPS OPERATOR J. KIRKPATRICK, OBSERVED A PDOP 1.0 ON SURVEY POINT NUMBER 153.
- 6) SURFACE AND BOTTOM HOLE LOCATIONS ARE MEASURED 90° FROM SECTION LINES.

Construction Plan Prepared for:



TEP Rocky Mountain LLC

SE1/4 NW1/4, SECTION 25  
T. 6 S., R. 95 W. of the 6th. P.M.  
GARFIELD COUNTY, COLORADO