



**PHOTO: VIEW OF REFERENCE AREA**

**CAMERA ANGLE: NORTHERLY**



**PHOTO: VIEW OF REFERENCE AREA**

**CAMERA ANGLE: EASTERLY**

REV: 4 05-24-17 C.C. (PHOTO UPDATE)

## **BILL BARRETT CORPORATION**

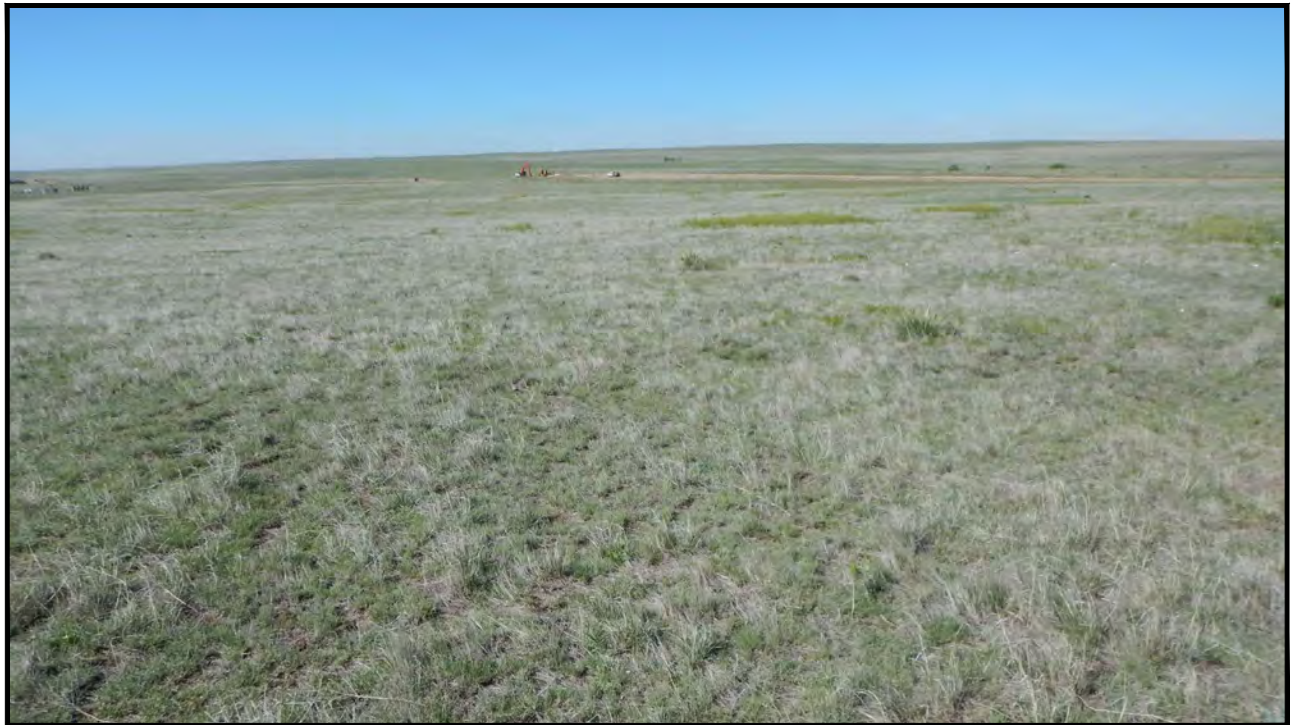
**WILL TRUST 6-62-3 2 NWNW PAD  
LOT 4, SECTION 3, T6N, R62W, 6th P.M.  
WELD COUNTY, COLORADO**



**UELS, LLC**  
Corporate Office \* 85 South 200 East  
Vernal, UT 84078 \* (435) 789-1017

TAKEN BY	G.W.	05-22-17	
DRAWN BY	J.L.G.	12-28-15	
<b>REFERENCE AREA PHOTOS</b>			<b>REF 1</b>





**PHOTO: VIEW OF REFERENCE AREA**

**CAMERA ANGLE: SOUTHERLY**



**PHOTO: VIEW OF REFERENCE AREA**

**CAMERA ANGLE: WESTERLY**

REV: 4 05-24-17 C.C. (PHOTO UPDATE)

## **BILL BARRETT CORPORATION**

**WILL TRUST 6-62-3 2 NWNW PAD  
LOT 4, SECTION 3, T6N, R62W, 6th P.M.  
WELD COUNTY, COLORADO**



**UELS, LLC**  
Corporate Office \* 85 South 200 East  
Vernal, UT 84078 \* (435) 789-1017

TAKEN BY	G.W.	05-22-17	
DRAWN BY	J.L.G.	12-28-15	
<b>REFERENCE AREA PHOTOS</b>			<b>REF 2</b>