



Lat40°, Inc. 6250 W. 10th Street, Unit 2, Greeley, CO 970-515-5294

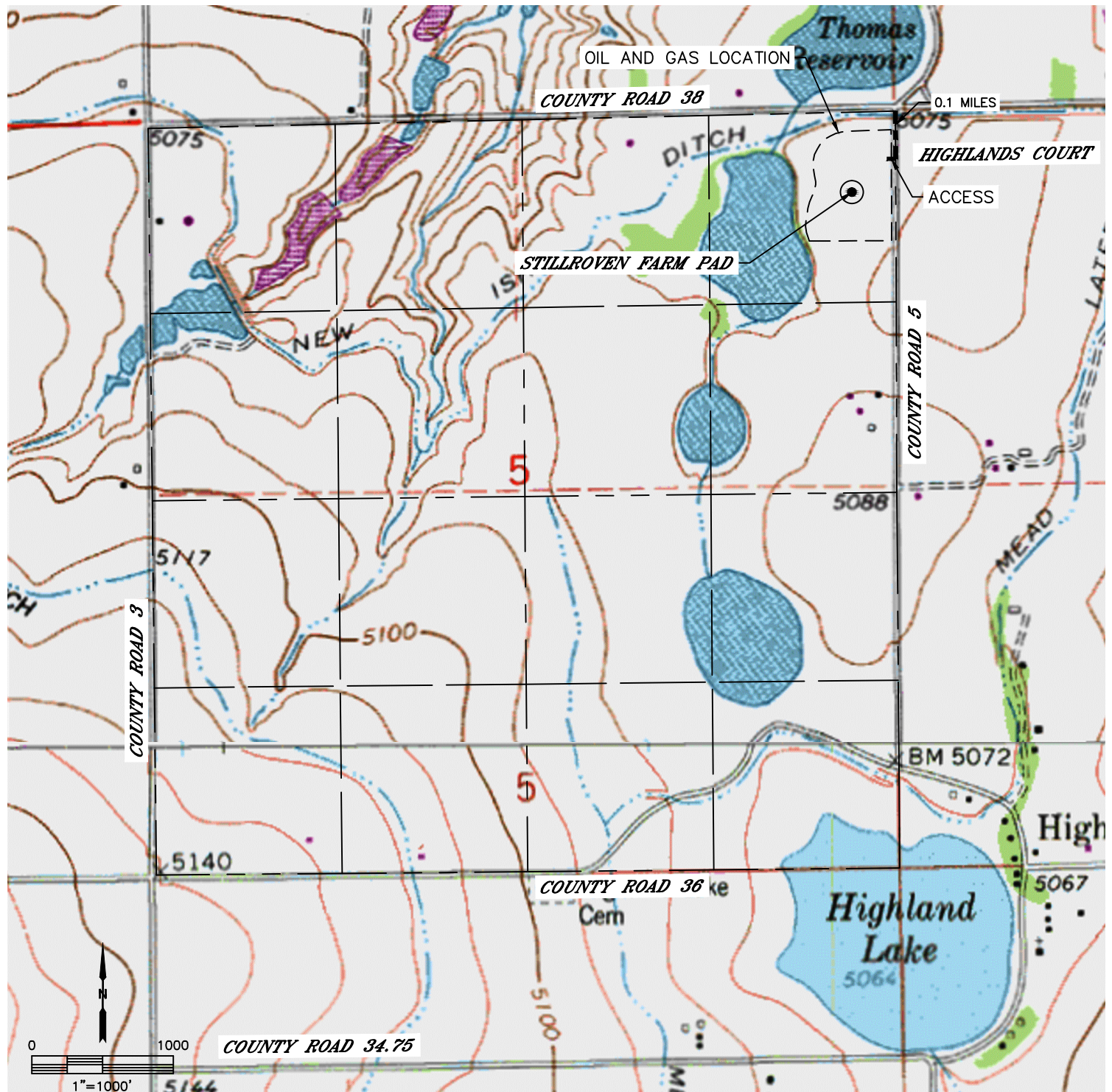
ACCESS ROAD MAP

STILLROVEN FARM PAD

SECTION: 5
TOWNSHIP: 3N
RANGE: 68W
6TH. P.M.
WELD COUNTY, CO

DRIVING DIRECTIONS TO STILLROVEN FARM PAD:

FROM THE INTERSECTION OF COUNTY ROAD 38 AND COUNTY ROAD 5 DRIVE SOUTH ON COUNTY ROAD 5 FOR 0.1 MILES TO HIGHLANDS COURT, TURN WEST AND DRIVE ON PROPOSED ACCESS ROAD TO THE WELL PAD AND FACILITY LOCATION.





Lat40°, Inc. 6250 W. 10th Street, Unit 2, Greeley, CO 970-515-5294

ACCESS ROAD MAP

STILLROVEN FARM PAD

SECTION: 5
TOWNSHIP: 3N
RANGE: 68W
6TH. P.M.
WELD COUNTY, CO

