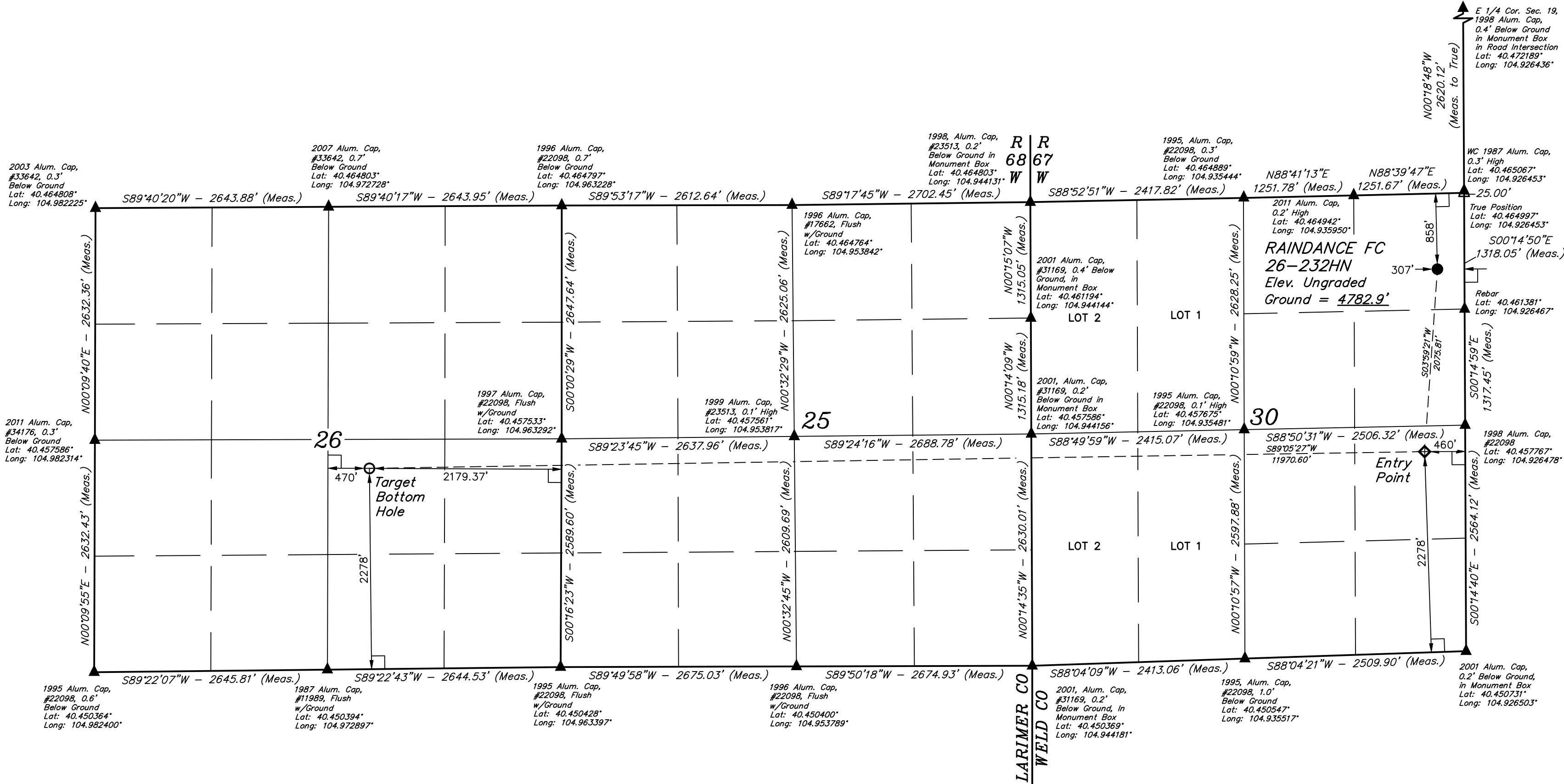
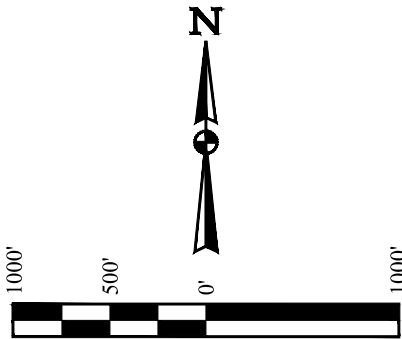


T6N, R67W, 6th P.M.

GREAT WESTERN OPERATING COMPANY

RAINDANCE FC 26-232HN
NE 1/4 NE 1/4, SECTION 30, T6N, R67W, 6th P.M.
WELD COUNTY, COLORADO

BASIS OF BEARINGS
BASIS OF ELEVATION
USGS COOPERATIVE BASE NETWORK CONTROL STATION,
DESIGNATION "VERMILYEA". NGS DATA SHEET LISTS THE
NAVD 88 ELEVATION AS BEING 5026 FEET.



LEGEND:

- 90° SYMBOL
- PROPOSED WELLHEAD.
- TARGET BOTTOM HOLE.
- ENTRY POINT.
- SECTION CORNERS LOCATED. (NAD 83)
- SECTION CORNERS RE-ESTABLISHED. (Not Set on Ground.) (NAD 83)

PDOP = 1.5

NAD 83 (SURFACE LOCATION)	NAD 83 (ENTRY POINT)	NAD 83 (TARGET BOTTOM HOLE)
LATITUDE = 40°27'45.47" (40.462631)	LATITUDE = 40°27'25.02" (40.456950)	LATITUDE = 40°27'23.95" (40.456653)
LONGITUDE = 104°55'39.22" (104.927561)	LONGITUDE = 104°55'41.28" (104.928133)	LONGITUDE = 104°58'16.09" (104.971136)
NAD 27 (SURFACE LOCATION)	NAD 27 (ENTRY POINT)	NAD 27 (TARGET BOTTOM HOLE)
LATITUDE = 40°27'45.53" (40.462647)	LATITUDE = 40°27'25.09" (40.456969)	LATITUDE = 40°27'24.01" (40.456669)
LONGITUDE = 104°55'37.32" (104.927033)	LONGITUDE = 104°55'39.37" (104.927603)	LONGITUDE = 104°58'14.17" (104.970603)

REV: 3 10-26-16 K.B. (SHL, EP, TBH & NAME CHANGE)



SURVEYED BY CHAD MEIERS, J.C.
DRAWN BY K.B.

UELS, LLC
Corporate Office * 85 South 200 East
Vernal, UT 84078 * (435) 789-1017

SCALE
1" = 1000'

WELL LOCATION PLAT