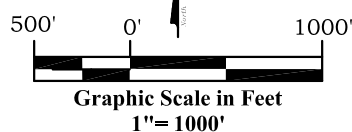
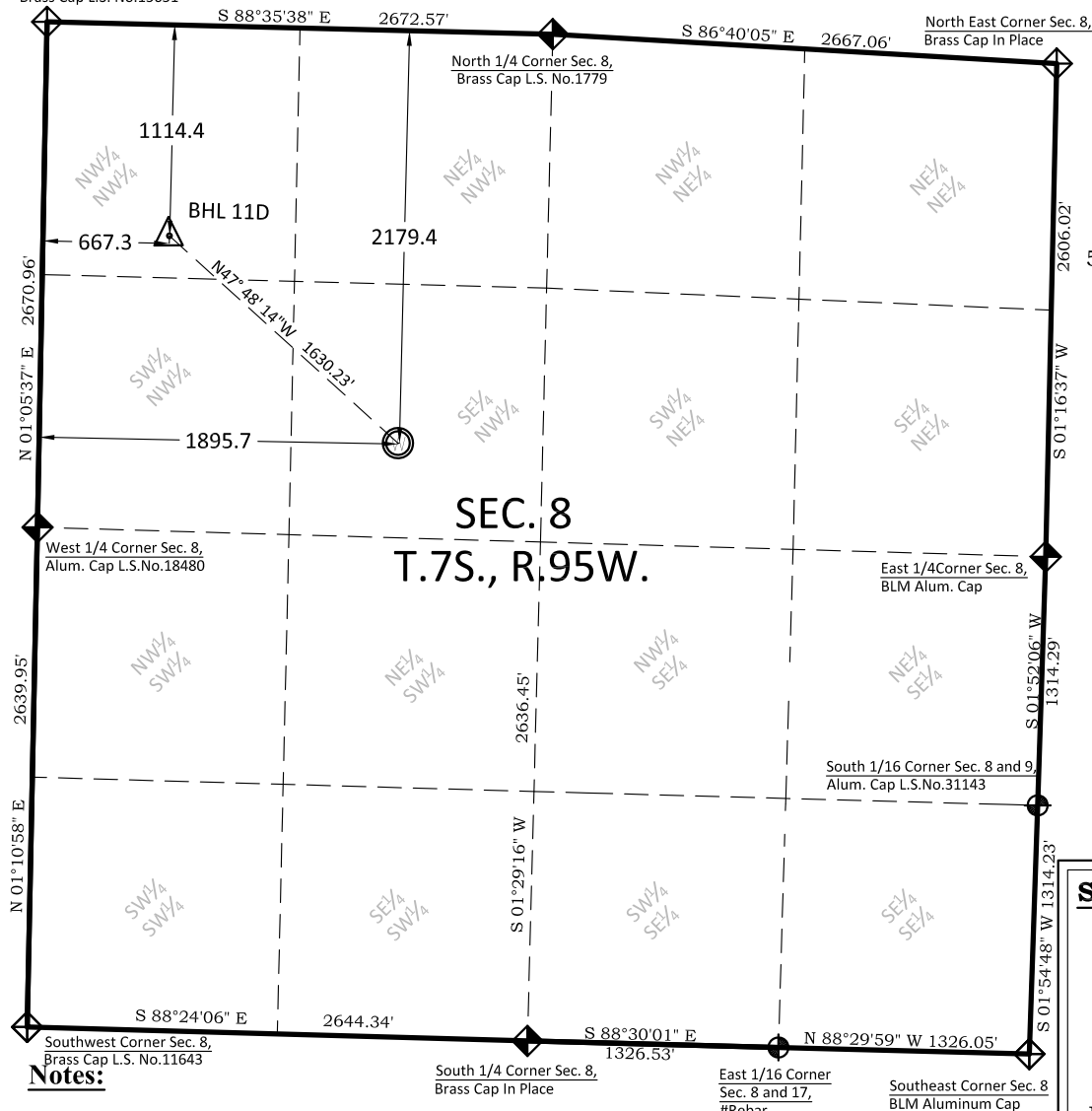


Northwest Corner Sec. 8,
Brass Cap L.S. No.15651



Legend

- Field Surveyed Section Corner
- Field Surveyed Quarter Corner
- Calculated Section Corner Location
- Field Surveyed $\frac{1}{6}$ Corner

Surface: 11D-08-07-95

2179' FNL
1896' FWL
Gnd El= 5436
Pad El= 5430

NAD83

Lat: 39.453554394°N
Long: 108.023950014°W

Bottom: 11D-08-07-95

1114' FNL
667' FWL
NAD83

Lat: 39.456446201°N
Long: 108.028353000°W

Notes:

1. LATITUDE AND LONGITUDE COORDINATES ARE DIFFERENTIALLY CORRECTED AND BASED ON PUBLISHED NGS CONTROL STATION "WDP-5". SYSTEM: UTM ZONE: 13 NORTH DATUM: NAD 1983 (CONUS)
2. ELEVATIONS ARE BASED ON NAVD OF 1988.
3. ALL BOTTOM AND TOP HOLE LOCATIONS ARE MEASURED 90 DEGREES FROM SECTION LINE.
4. USGS QUADRANGLE MAP "PARACHUTE".
5. CURRENT SURFACE LAND USE: RANGE LAND.
6. PDOP AT THE TIME OF LOCATION OF SURFACE WELL = 1.1
7. GPS OPERATOR: P. HOFFMANN

SURVEYOR'S CERTIFICATE

I, SCOTT E. AIBNER, A REGISTERED LAND SURVEYOR, LICENSED UNDER THE LAWS OF THE STATE OF COLORADO DO HEREBY CERTIFY THAT THE SURVEY SHOWN HEREON WAS PREPARED BY RIVER VALLEY SURVEY, INC., FOR URSA OPERATING COMPANY LLC BY ME OR UNDER MY DIRECT SUPERVISION AND HAS BEEN STAKED ON THE GROUND AS SHOWN ON THE PLAT AND THAT THIS PLAT IS A TRUE REPRESENTATION THEREOF.

BY: 
SCOTT E. AIBNER, COLORADO REG. NO. 31143

Prepared For: Ursa Operating Company LLC
Proposed BMC L 11D-08-07-95 Well, Surface Situate in
The SE $\frac{1}{4}$ NW $\frac{1}{4}$ Section 8, Township 7 South, Range 95
West of the 6 th. Principal Meridian, County of Garfield,
State of Colorado.



Ursa OPERATING
COMPANY



River Valley Survey, Inc.
110 East 3rd. Street, Suite 213
Rifle, Colorado 81650
Ph: 970-379-7846

Project: RVS 06001-58L

Field Date: 05-01-17

Scale: 1"= 1000'

Date: 05-15-17

Sheet: 1 of 1

303.a Form 2
BMC L Pad
BMC L 11D-08-07-95

Section 8, Township 7 South, Range 95 West