

Burlington Resources

Location: COLORADO Slot: SLOT#01 STATE CHALLENGER 5-65 2-3 3BYH Lateral A
Field: ARAPAHOE COUNTY (NAD83/TN) Well: STATE CHALLENGER 5-65 2-3 3BYH Lateral B
Facility: SEC.0-TON-R0W Wellbore: STATE CHALLENGER 5-65 2-3 3BYH Lateral B PWB

Plot reference wellpath is STATE CHALLENGER 5-65 2-3 3BYH (REV-A.0) Lateral B PWB	Grid System: NAD83 / Lambert Colorado SP, Central Zone (502), US feet
True vertical depths are referenced to Rig on SLOT#01 STATE CHALLENGER 5-65 2-3 3BYH Lateral A (RT)	* = Wellpath was transformed from a different geodetic datum
Measured depths are referenced to Rig on SLOT#01 STATE CHALLENGER 5-65 2-3 3BYH Lateral A (RT)	North Reference: True north
Rig on SLOT#01 STATE CHALLENGER 5-65 2-3 3BYH Lateral A (RT) to Mean Sea Level: 5866 feet	Scale: True distance
Mean Sea Level to Mud line (At Slot: SLOT#01 STATE CHALLENGER 5-65 2-3 3BYH Lateral A): 0 feet	Depths are in feet
Coordinates are in feet referenced to Slot	Created by: adamkat on 2017-06-27
	Database: WA_DEN_Denver_Defn

Location Information

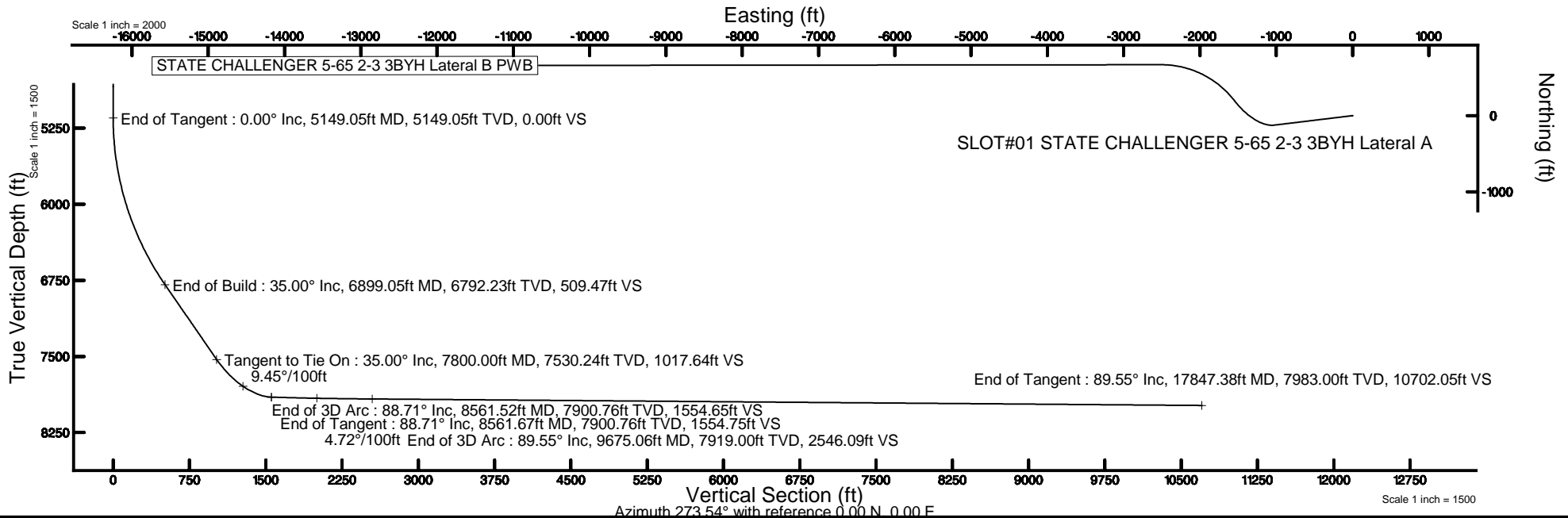
Facility Name			Grid East (US ft)	Grid North (US ft)	Latitude	Longitude
SEC.0-TON-R0W			3248259.691	1660139.022	39°38'33.250"N	104°37'06.320"W
Slot	Local N (ft)	Local E (ft)	Grid East (US ft)	Grid North (US ft)	Latitude	Longitude
SLOT#01 STATE CHALLENGER 5-65 2-3 3BYH Lateral A	0.00	0.00	3248259.691	1660139.022	39°38'33.250"N	104°37'06.320"W
Rig on SLOT#01 STATE CHALLENGER 5-65 2-3 3BYH Lateral A (RT) to Mud line (At Slot: SLOT#01 STATE CHALLENGER 5-65 2-3 3BYH Lateral A)						5866ft
Mean Sea Level to Mud line (At Slot: SLOT#01 STATE CHALLENGER 5-65 2-3 3BYH Lateral A)						0ft
Rig on SLOT#01 STATE CHALLENGER 5-65 2-3 3BYH Lateral A (RT) to Mean Sea Level						5866ft

Bottom Hole Location

MD (ft)	Inc (°)	Az (°)	TVD (ft)	Local N (ft)	Local E (ft)	Grid East (US ft)	Grid North (US ft)	Latitude	Longitude
17847.38	89.551	269.936	7983.00	659.96	-10681.68	3237572.34	1660695.28	39°38'39.750"N	104°39'22.870"W

Well Profile Data

Design Comment	MD (ft)	Inc (°)	Az (°)	TVD (ft)	Local N (ft)	Local E (ft)	DLS (°/100ft)	VS (ft)
Tie On	0.00	0.000	263.071	0.00	0.00	0.00	0.00	0.00
End of Tangent	5149.05	0.000	263.071	5149.05	0.00	0.00	0.00	0.00
End of Build	6899.05	35.000	263.071	6792.23	-62.50	-514.31	2.00	509.47
Tangent to Tie On	7800.00	35.000	263.071	7530.24	-124.84	-1027.30	0.00	1017.64
End of 3D Arc	8561.52	88.705	322.533	7900.76	193.99	-1545.63	9.45	1554.65
End of Tangent	8561.67	88.705	322.533	7900.76	194.12	-1545.72	0.00	1554.75
End of 3D Arc	9675.06	89.551	269.936	7919.00	669.06	-2509.61	4.72	2546.09
End of Tangent	17847.38	89.551	269.936	7983.00	659.96	-10681.68	0.00	10702.05



BURLINGTON
RESOURCES



BGGM (1900.0 to 2018.0) Dip: 66.34° Field: 52076.9 nT
Magnetic North is 8.26 degrees East of True North (at 5/15/2017)

To correct azimuth from Magnetic to True add 8.26 degrees

REFERENCE WELLPATH IDENTIFICATION			
Operator	Burlington Resources	Slot	SLOT#01 STATE CHALLENGER 5-65 2-3 3BYH Lateral A
Area	COLORADO	Well	STATE CHALLENGER 5-65 2-3 3BYH Lateral B
Field	ARAPAHOE COUNTY (NAD83/TN)	Wellbore	STATE CHALLENGER 5-65 2-3 3BYH Lateral B PWB
Facility	SEC.0-T0N-R0W	Sidetrack from	STATE CHALLENGER 5-65 2-3 3BYH (REV-A.0) Lateral A PWP at 7800.00 MD

REPORT SETUP INFORMATION			
Projection System	NAD83 / Lambert Colorado SP, Central Zone (502), US feet	Software System	WellArchitect® 5.0
North Reference	True	User	Adamkat
Scale	0.999981	Report Generated	6/27/2017 at 7:46:44 AM
Convergence at slot	0.56° East	Database/Source file	WA_DEN_Denver_Defn/STATE_CHALLENGER_5-65_2-3_3BYH_REV-A.0_Lateral_B_PWP.xml

WELLPATH LOCATION						
	Local coordinates		Grid coordinates		Geographic coordinates	
	North[ft]	East[ft]	Easting[US ft]	Northing[US ft]	Latitude	Longitude
Slot Location	0.00	0.00	3248259.69	1660139.02	39°38'33.250"N	104°37'06.320"W
Facility Reference Pt			3248259.69	1660139.02	39°38'33.250"N	104°37'06.320"W
Field Reference Pt			3256721.09	1679994.75	39°41'48.650"N	104°35'15.610"W

WELLPATH DATUM			
Calculation method	Minimum curvature	Rig on SLOT#01 STATE CHALLENGER 5-65 2-3 3BYH Lateral A (RT) to Facility Vertical Datum	5866.00ft
Horizontal Reference Pt	Slot	Rig on SLOT#01 STATE CHALLENGER 5-65 2-3 3BYH Lateral A (RT) to Mean Sea Level	5866.00ft
Vertical Reference Pt	Rig on SLOT#01 STATE CHALLENGER 5-65 2-3 3BYH Lateral A (RT)	Rig on SLOT#01 STATE CHALLENGER 5-65 2-3 3BYH Lateral A (RT) to Mud Line at Slot (SLOT#01 STATE CHALLENGER 5-65 2-3 3BYH Lateral A)	5866.00ft
MD Reference Pt	Rig on SLOT#01 STATE CHALLENGER 5-65 2-3 3BYH Lateral A (RT)	Section Origin	N 0.00, E 0.00 ft
Field Vertical Reference	Mean Sea Level	Section Azimuth	273.54°

REFERENCE WELLPATH IDENTIFICATION			
Operator	Burlington Resources	Slot	SLOT#01 STATE CHALLENGER 5-65 2-3 3BYH Lateral A
Area	COLORADO	Well	STATE CHALLENGER 5-65 2-3 3BYH Lateral B
Field	ARAPAHOE COUNTY (NAD83/TN)	Wellbore	STATE CHALLENGER 5-65 2-3 3BYH Lateral B PWB
Facility	SEC.0-T0N-R0W	Sidetrack from	STATE CHALLENGER 5-65 2-3 3BYH (REV-A.0) Lateral A PWP at 7800.00 MD

WELLPATH DATA (185 stations) † = interpolated/extrapolated station										
MD [ft]	Inclination [°]	Azimuth [°]	TVD [ft]	Vert Sect [ft]	North [ft]	East [ft]	DLS [°/100ft]	Comments		
0.00	0.000	263.071	0.00	0.00	0.00	0.00	0.00	Tie On		
100.00†	0.000	263.071	100.00	0.00	0.00	0.00	0.00			
200.00†	0.000	263.071	200.00	0.00	0.00	0.00	0.00			
300.00†	0.000	263.071	300.00	0.00	0.00	0.00	0.00			
400.00†	0.000	263.071	400.00	0.00	0.00	0.00	0.00			
500.00†	0.000	263.071	500.00	0.00	0.00	0.00	0.00			
600.00†	0.000	263.071	600.00	0.00	0.00	0.00	0.00			
700.00†	0.000	263.071	700.00	0.00	0.00	0.00	0.00			
800.00†	0.000	263.071	800.00	0.00	0.00	0.00	0.00			
900.00†	0.000	263.071	900.00	0.00	0.00	0.00	0.00			
1000.00†	0.000	263.071	1000.00	0.00	0.00	0.00	0.00			
1100.00†	0.000	263.071	1100.00	0.00	0.00	0.00	0.00			
1200.00†	0.000	263.071	1200.00	0.00	0.00	0.00	0.00			
1300.00†	0.000	263.071	1300.00	0.00	0.00	0.00	0.00			
1400.00†	0.000	263.071	1400.00	0.00	0.00	0.00	0.00			
1500.00†	0.000	263.071	1500.00	0.00	0.00	0.00	0.00			
1600.00†	0.000	263.071	1600.00	0.00	0.00	0.00	0.00			
1700.00†	0.000	263.071	1700.00	0.00	0.00	0.00	0.00			
1800.00†	0.000	263.071	1800.00	0.00	0.00	0.00	0.00			
1900.00†	0.000	263.071	1900.00	0.00	0.00	0.00	0.00			
2000.00†	0.000	263.071	2000.00	0.00	0.00	0.00	0.00			
2100.00†	0.000	263.071	2100.00	0.00	0.00	0.00	0.00			
2200.00†	0.000	263.071	2200.00	0.00	0.00	0.00	0.00			
2300.00†	0.000	263.071	2300.00	0.00	0.00	0.00	0.00			
2400.00†	0.000	263.071	2400.00	0.00	0.00	0.00	0.00			
2500.00†	0.000	263.071	2500.00	0.00	0.00	0.00	0.00			
2600.00†	0.000	263.071	2600.00	0.00	0.00	0.00	0.00			
2700.00†	0.000	263.071	2700.00	0.00	0.00	0.00	0.00			
2800.00†	0.000	263.071	2800.00	0.00	0.00	0.00	0.00			
2900.00†	0.000	263.071	2900.00	0.00	0.00	0.00	0.00			

REFERENCE WELLPATH IDENTIFICATION

Operator	Burlington Resources	Slot	SLOT#01 STATE CHALLENGER 5-65 2-3 3BYH Lateral A
Area	COLORADO	Well	STATE CHALLENGER 5-65 2-3 3BYH Lateral B
Field	ARAPAHOE COUNTY (NAD83/TN)	Wellbore	STATE CHALLENGER 5-65 2-3 3BYH Lateral B PWB
Facility	SEC.0-T0N-R0W	Sidetrack from	STATE CHALLENGER 5-65 2-3 3BYH (REV-A.0) Lateral A PWP at 7800.00 MD

WELLPATH DATA (185 stations) † = interpolated/extrapolated station

MD [ft]	Inclination [°]	Azimuth [°]	TVD [ft]	Vert Sect [ft]	North [ft]	East [ft]	DLS [°/100ft]	Comments
3000.00†	0.000	263.071	3000.00	0.00	0.00	0.00	0.00	
3100.00†	0.000	263.071	3100.00	0.00	0.00	0.00	0.00	
3200.00†	0.000	263.071	3200.00	0.00	0.00	0.00	0.00	
3300.00†	0.000	263.071	3300.00	0.00	0.00	0.00	0.00	
3400.00†	0.000	263.071	3400.00	0.00	0.00	0.00	0.00	
3500.00†	0.000	263.071	3500.00	0.00	0.00	0.00	0.00	
3600.00†	0.000	263.071	3600.00	0.00	0.00	0.00	0.00	
3700.00†	0.000	263.071	3700.00	0.00	0.00	0.00	0.00	
3800.00†	0.000	263.071	3800.00	0.00	0.00	0.00	0.00	
3900.00†	0.000	263.071	3900.00	0.00	0.00	0.00	0.00	
4000.00†	0.000	263.071	4000.00	0.00	0.00	0.00	0.00	
4100.00†	0.000	263.071	4100.00	0.00	0.00	0.00	0.00	
4200.00†	0.000	263.071	4200.00	0.00	0.00	0.00	0.00	
4300.00†	0.000	263.071	4300.00	0.00	0.00	0.00	0.00	
4400.00†	0.000	263.071	4400.00	0.00	0.00	0.00	0.00	
4500.00†	0.000	263.071	4500.00	0.00	0.00	0.00	0.00	
4600.00†	0.000	263.071	4600.00	0.00	0.00	0.00	0.00	
4700.00†	0.000	263.071	4700.00	0.00	0.00	0.00	0.00	
4800.00†	0.000	263.071	4800.00	0.00	0.00	0.00	0.00	
4900.00†	0.000	263.071	4900.00	0.00	0.00	0.00	0.00	
5000.00†	0.000	263.071	5000.00	0.00	0.00	0.00	0.00	
5100.00†	0.000	263.071	5100.00	0.00	0.00	0.00	0.00	
5149.05	0.000	263.071	5149.05	0.00	0.00	0.00	0.00	End of Tangent
5200.00†	1.019	263.071	5200.00	0.45	-0.05	-0.45	2.00	
5300.00†	3.019	263.071	5299.93	3.91	-0.48	-3.95	2.00	
5400.00†	5.019	263.071	5399.68	10.80	-1.33	-10.90	2.00	
5500.00†	7.019	263.071	5499.12	21.11	-2.59	-21.31	2.00	
5600.00†	9.019	263.071	5598.14	34.83	-4.27	-35.16	2.00	
5700.00†	11.019	263.071	5696.61	51.94	-6.37	-52.43	2.00	
5800.00†	13.019	263.071	5794.41	72.41	-8.88	-73.10	2.00	

REFERENCE WELLPATH IDENTIFICATION

Operator	Burlington Resources	Slot	SLOT#01 STATE CHALLENGER 5-65 2-3 3BYH Lateral A
Area	COLORADO	Well	STATE CHALLENGER 5-65 2-3 3BYH Lateral B
Field	ARAPAHOE COUNTY (NAD83/TN)	Wellbore	STATE CHALLENGER 5-65 2-3 3BYH Lateral B PWB
Facility	SEC.0-T0N-R0W	Sidetrack from	STATE CHALLENGER 5-65 2-3 3BYH (REV-A.0) Lateral A PWP at 7800.00 MD

WELLPATH DATA (185 stations) † = interpolated/extrapolated station

MD [ft]	Inclination [°]	Azimuth [°]	TVD [ft]	Vert Sect [ft]	North [ft]	East [ft]	DLS [°/100ft]	Comments
5900.00†	15.019	263.071	5891.43	96.23	-11.81	-97.15	2.00	
6000.00†	17.019	263.071	5987.54	123.37	-15.13	-124.54	2.00	
6100.00†	19.019	263.071	6082.63	153.79	-18.87	-155.25	2.00	
6200.00†	21.019	263.071	6176.59	187.45	-22.99	-189.23	2.00	
6300.00†	23.019	263.071	6269.29	224.31	-27.52	-226.44	2.00	
6400.00†	25.019	263.071	6360.62	264.34	-32.43	-266.85	2.00	
6500.00†	27.019	263.071	6450.48	307.47	-37.72	-310.39	2.00	
6600.00†	29.019	263.071	6538.76	353.67	-43.38	-357.02	2.00	
6700.00†	31.019	263.071	6625.34	402.86	-49.42	-406.68	2.00	
6800.00†	33.019	263.071	6710.12	455.00	-55.82	-459.31	2.00	
6899.05	35.000	263.071	6792.23	509.47	-62.50	-514.31	2.00	End of Build
6900.00†	35.000	263.071	6793.00	510.01	-62.56	-514.85	0.00	
7000.00†	35.000	263.071	6874.92	566.41	-69.48	-571.79	0.00	
7100.00†	35.000	263.071	6956.83	622.82	-76.40	-628.73	0.00	
7200.00†	35.000	263.071	7038.75	679.22	-83.32	-685.67	0.00	
7300.00†	35.000	263.071	7120.66	735.63	-90.24	-742.60	0.00	
7400.00†	35.000	263.071	7202.58	792.03	-97.16	-799.54	0.00	
7500.00†	35.000	263.071	7284.49	848.43	-104.08	-856.48	0.00	
7600.00†	35.000	263.071	7366.41	904.84	-111.00	-913.42	0.00	
7700.00†	35.000	263.071	7448.33	961.24	-117.92	-970.36	0.00	
7800.00	35.000	263.071	7530.24	1017.64	-124.84	-1027.30	0.00	Tangent to Tie On
7900.00†	39.815	276.497	7609.78	1077.96	-124.67	-1087.71	9.45	
8000.00†	45.874	287.188	7683.17	1144.96	-110.41	-1153.96	9.45	
8100.00†	52.737	295.772	7748.40	1216.83	-82.44	-1224.24	9.45	
8200.00†	60.113	302.871	7803.72	1291.62	-41.52	-1296.65	9.45	
8300.00†	67.816	308.968	7847.61	1367.31	11.25	-1369.22	9.45	
8400.00†	75.722	314.420	7878.89	1441.84	74.42	-1439.99	9.45	
8500.00†	83.744	319.499	7896.71	1513.18	146.29	-1507.03	9.45	
8561.52	88.705	322.533	7900.76	1554.65	193.99	-1545.63	9.45	End of 3D Arc
8561.67	88.705	322.533	7900.76	1554.75	194.12	-1545.72	0.00	End of Tangent

REFERENCE WELLPATH IDENTIFICATION

Operator	Burlington Resources	Slot	SLOT#01 STATE CHALLENGER 5-65 2-3 3BYH Lateral A
Area	COLORADO	Well	STATE CHALLENGER 5-65 2-3 3BYH Lateral B
Field	ARAPAHOE COUNTY (NAD83/TN)	Wellbore	STATE CHALLENGER 5-65 2-3 3BYH Lateral B PWB
Facility	SEC.0-T0N-R0W	Sidetrack from	STATE CHALLENGER 5-65 2-3 3BYH (REV-A.0) Lateral A PWP at 7800.00 MD

WELLPATH DATA (185 stations) † = interpolated/extrapolated station

MD [ft]	Inclination [°]	Azimuth [°]	TVD [ft]	Vert Sect [ft]	North [ft]	East [ft]	DLS [°/100ft]	Comments
8600.00†	88.719	320.722	7901.62	1580.34	224.15	-1569.51	4.72	
8700.00†	88.762	315.997	7903.82	1651.23	298.85	-1635.92	4.72	
8800.00†	88.813	311.272	7905.94	1727.69	367.82	-1708.26	4.72	
8900.00†	88.872	306.547	7907.96	1809.19	430.60	-1786.03	4.72	
9000.00†	88.939	301.823	7909.87	1895.18	486.76	-1868.72	4.72	
9100.00†	89.013	297.099	7911.66	1985.07	535.92	-1955.75	4.72	
9200.00†	89.094	292.375	7913.31	2078.27	577.75	-2046.53	4.72	
9300.00†	89.181	287.651	7914.82	2174.12	611.96	-2140.46	4.72	
9400.00†	89.273	282.928	7916.17	2271.99	638.32	-2236.88	4.72	
9500.00†	89.371	278.204	7917.35	2371.20	656.65	-2335.15	4.72	
9600.00†	89.473	273.481	7918.36	2471.09	666.82	-2434.60	4.72	
9675.06	89.551	269.936	7919.00	2546.09	669.06	-2509.61	4.72	End of 3D Arc
9700.00†	89.551	269.936	7919.20	2570.98	669.03	-2534.55	0.00	
9800.00†	89.551	269.936	7919.98	2670.78	668.92	-2634.55	0.00	
9900.00†	89.551	269.936	7920.76	2770.58	668.81	-2734.54	0.00	
10000.00†	89.551	269.936	7921.54	2870.38	668.70	-2834.54	0.00	
10100.00†	89.551	269.936	7922.33	2970.18	668.59	-2934.54	0.00	
10200.00†	89.551	269.936	7923.11	3069.98	668.48	-3034.53	0.00	
10300.00†	89.551	269.936	7923.89	3169.78	668.36	-3134.53	0.00	
10400.00†	89.551	269.936	7924.68	3269.58	668.25	-3234.53	0.00	
10500.00†	89.551	269.936	7925.46	3369.38	668.14	-3334.53	0.00	
10600.00†	89.551	269.936	7926.24	3469.18	668.03	-3434.52	0.00	
10700.00†	89.551	269.936	7927.03	3568.98	667.92	-3534.52	0.00	
10800.00†	89.551	269.936	7927.81	3668.78	667.81	-3634.52	0.00	
10900.00†	89.551	269.936	7928.59	3768.58	667.70	-3734.51	0.00	
11000.00†	89.551	269.936	7929.38	3868.38	667.58	-3834.51	0.00	
11100.00†	89.551	269.936	7930.16	3968.18	667.47	-3934.51	0.00	
11200.00†	89.551	269.936	7930.94	4067.98	667.36	-4034.50	0.00	
11300.00†	89.551	269.936	7931.73	4167.78	667.25	-4134.50	0.00	
11400.00†	89.551	269.936	7932.51	4267.58	667.14	-4234.50	0.00	

REFERENCE WELLPATH IDENTIFICATION

Operator	Burlington Resources	Slot	SLOT#01 STATE CHALLENGER 5-65 2-3 3BYH Lateral A
Area	COLORADO	Well	STATE CHALLENGER 5-65 2-3 3BYH Lateral B
Field	ARAPAHOE COUNTY (NAD83/TN)	Wellbore	STATE CHALLENGER 5-65 2-3 3BYH Lateral B PWB
Facility	SEC.0-T0N-R0W	Sidetrack from	STATE CHALLENGER 5-65 2-3 3BYH (REV-A.0) Lateral A PWP at 7800.00 MD

WELLPATH DATA (185 stations) † = interpolated/extrapolated station

MD [ft]	Inclination [°]	Azimuth [°]	TVD [ft]	Vert Sect [ft]	North [ft]	East [ft]	DLS [°/100ft]	Comments
11500.00†	89.551	269.936	7933.29	4367.38	667.03	-4334.49	0.00	
11600.00†	89.551	269.936	7934.07	4467.18	666.92	-4434.49	0.00	
11700.00†	89.551	269.936	7934.86	4566.98	666.81	-4534.49	0.00	
11800.00†	89.551	269.936	7935.64	4666.78	666.69	-4634.48	0.00	
11900.00†	89.551	269.936	7936.42	4766.58	666.58	-4734.48	0.00	
12000.00†	89.551	269.936	7937.21	4866.38	666.47	-4834.48	0.00	
12100.00†	89.551	269.936	7937.99	4966.18	666.36	-4934.48	0.00	
12200.00†	89.551	269.936	7938.77	5065.98	666.25	-5034.47	0.00	
12300.00†	89.551	269.936	7939.56	5165.78	666.14	-5134.47	0.00	
12400.00†	89.551	269.936	7940.34	5265.58	666.03	-5234.47	0.00	
12500.00†	89.551	269.936	7941.12	5365.37	665.91	-5334.46	0.00	
12600.00†	89.551	269.936	7941.91	5465.17	665.80	-5434.46	0.00	
12700.00†	89.551	269.936	7942.69	5564.97	665.69	-5534.46	0.00	
12800.00†	89.551	269.936	7943.47	5664.77	665.58	-5634.45	0.00	
12900.00†	89.551	269.936	7944.26	5764.57	665.47	-5734.45	0.00	
13000.00†	89.551	269.936	7945.04	5864.37	665.36	-5834.45	0.00	
13100.00†	89.551	269.936	7945.82	5964.17	665.25	-5934.44	0.00	
13200.00†	89.551	269.936	7946.60	6063.97	665.13	-6034.44	0.00	
13300.00†	89.551	269.936	7947.39	6163.77	665.02	-6134.44	0.00	
13400.00†	89.551	269.936	7948.17	6263.57	664.91	-6234.43	0.00	
13500.00†	89.551	269.936	7948.95	6363.37	664.80	-6334.43	0.00	
13600.00†	89.551	269.936	7949.74	6463.17	664.69	-6434.43	0.00	
13700.00†	89.551	269.936	7950.52	6562.97	664.58	-6534.43	0.00	
13800.00†	89.551	269.936	7951.30	6662.77	664.47	-6634.42	0.00	
13900.00†	89.551	269.936	7952.09	6762.57	664.36	-6734.42	0.00	
14000.00†	89.551	269.936	7952.87	6862.37	664.24	-6834.42	0.00	
14100.00†	89.551	269.936	7953.65	6962.17	664.13	-6934.41	0.00	
14200.00†	89.551	269.936	7954.44	7061.97	664.02	-7034.41	0.00	
14300.00†	89.551	269.936	7955.22	7161.77	663.91	-7134.41	0.00	
14400.00†	89.551	269.936	7956.00	7261.57	663.80	-7234.40	0.00	

REFERENCE WELLPATH IDENTIFICATION

Operator	Burlington Resources	Slot	SLOT#01 STATE CHALLENGER 5-65 2-3 3BYH Lateral A
Area	COLORADO	Well	STATE CHALLENGER 5-65 2-3 3BYH Lateral B
Field	ARAPAHOE COUNTY (NAD83/TN)	Wellbore	STATE CHALLENGER 5-65 2-3 3BYH Lateral B PWB
Facility	SEC.0-T0N-R0W	Sidetrack from	STATE CHALLENGER 5-65 2-3 3BYH (REV-A.0) Lateral A PWP at 7800.00 MD

WELLPATH DATA (185 stations) † = interpolated/extrapolated station

MD [ft]	Inclination [°]	Azimuth [°]	TVD [ft]	Vert Sect [ft]	North [ft]	East [ft]	DLS [°/100ft]	Comments
14500.00†	89.551	269.936	7956.79	7361.37	663.69	-7334.40	0.00	
14600.00†	89.551	269.936	7957.57	7461.17	663.58	-7434.40	0.00	
14700.00†	89.551	269.936	7958.35	7560.97	663.46	-7534.39	0.00	
14800.00†	89.551	269.936	7959.13	7660.77	663.35	-7634.39	0.00	
14900.00†	89.551	269.936	7959.92	7760.57	663.24	-7734.39	0.00	
15000.00†	89.551	269.936	7960.70	7860.37	663.13	-7834.38	0.00	
15100.00†	89.551	269.936	7961.48	7960.17	663.02	-7934.38	0.00	
15200.00†	89.551	269.936	7962.27	8059.97	662.91	-8034.38	0.00	
15300.00†	89.551	269.936	7963.05	8159.77	662.80	-8134.37	0.00	
15400.00†	89.551	269.936	7963.83	8259.57	662.69	-8234.37	0.00	
15500.00†	89.551	269.936	7964.62	8359.37	662.57	-8334.37	0.00	
15600.00†	89.551	269.936	7965.40	8459.17	662.46	-8434.37	0.00	
15700.00†	89.551	269.936	7966.18	8558.96	662.35	-8534.36	0.00	
15800.00†	89.551	269.936	7966.97	8658.76	662.24	-8634.36	0.00	
15900.00†	89.551	269.936	7967.75	8758.56	662.13	-8734.36	0.00	
16000.00†	89.551	269.936	7968.53	8858.36	662.02	-8834.35	0.00	
16100.00†	89.551	269.936	7969.32	8958.16	661.91	-8934.35	0.00	
16200.00†	89.551	269.936	7970.10	9057.96	661.79	-9034.35	0.00	
16300.00†	89.551	269.936	7970.88	9157.76	661.68	-9134.34	0.00	
16400.00†	89.551	269.936	7971.67	9257.56	661.57	-9234.34	0.00	
16500.00†	89.551	269.936	7972.45	9357.36	661.46	-9334.34	0.00	
16600.00†	89.551	269.936	7973.23	9457.16	661.35	-9434.33	0.00	
16700.00†	89.551	269.936	7974.01	9556.96	661.24	-9534.33	0.00	
16800.00†	89.551	269.936	7974.80	9656.76	661.13	-9634.33	0.00	
16900.00†	89.551	269.936	7975.58	9756.56	661.01	-9734.32	0.00	
17000.00†	89.551	269.936	7976.36	9856.36	660.90	-9834.32	0.00	
17100.00†	89.551	269.936	7977.15	9956.16	660.79	-9934.32	0.00	
17200.00†	89.551	269.936	7977.93	10055.96	660.68	-10034.32	0.00	
17300.00†	89.551	269.936	7978.71	10155.76	660.57	-10134.31	0.00	
17400.00†	89.551	269.936	7979.50	10255.56	660.46	-10234.31	0.00	

REFERENCE WELLPATH IDENTIFICATION			
Operator	Burlington Resources	Slot	SLOT#01 STATE CHALLENGER 5-65 2-3 3BYH Lateral A
Area	COLORADO	Well	STATE CHALLENGER 5-65 2-3 3BYH Lateral B
Field	ARAPAHOE COUNTY (NAD83/TN)	Wellbore	STATE CHALLENGER 5-65 2-3 3BYH Lateral B PWB
Facility	SEC.0-T0N-R0W	Sidetrack from	STATE CHALLENGER 5-65 2-3 3BYH (REV-A.0) Lateral A PWP at 7800.00 MD

WELLPATH DATA (185 stations) † = interpolated/extrapolated station										
MD [ft]	Inclination [°]	Azimuth [°]	TVD [ft]	Vert Sect [ft]	North [ft]	East [ft]	DLS [°/100ft]	Comments		
17500.00†	89.551	269.936	7980.28	10355.36	660.35	-10334.31	0.00			
17600.00†	89.551	269.936	7981.06	10455.16	660.24	-10434.30	0.00			
17700.00†	89.551	269.936	7981.85	10554.96	660.12	-10534.30	0.00			
17800.00†	89.551	269.936	7982.63	10654.76	660.01	-10634.30	0.00			
17847.38	89.551	269.936	7983.00	10702.05	659.96	-10681.68	0.00	End of Tangent		

REFERENCE WELLPATH IDENTIFICATION			
Operator	Burlington Resources	Slot	SLOT#01 STATE CHALLENGER 5-65 2-3 3BYH Lateral A
Area	COLORADO	Well	STATE CHALLENGER 5-65 2-3 3BYH Lateral B
Field	ARAPAHOE COUNTY (NAD83/TN)	Wellbore	STATE CHALLENGER 5-65 2-3 3BYH Lateral B PWB
Facility	SEC.0-T0N-R0W	Sidetrack from	STATE CHALLENGER 5-65 2-3 3BYH (REV-A.0) Lateral A PWP at 7800.00 MD

DESIGN COMMENTS					
MD [ft]	Inclination [°]	Azimuth [°]	TVD [ft]	Comment	
0.00	0.000	263.071	0.00	Tie On	
5149.05	0.000	263.071	5149.05	End of Tangent	
6899.05	35.000	263.071	6792.23	End of Build	
7800.00	35.000	263.071	7530.24	Tangent to Tie On	
8561.52	88.705	322.533	7900.76	End of 3D Arc	
8561.67	88.705	322.533	7900.76	End of Tangent	
9675.06	89.551	269.936	7919.00	End of 3D Arc	
17847.38	89.551	269.936	7983.00	End of Tangent	