



Kerr-McGee Oil & Gas Onshore LP

A subsidiary of Anadarko Petroleum Corporation

1099 18th Street
Denver, CO 80202
720-929-6000

May 15, 2017

Matt Lepore
Director, Colorado Oil and Gas Conservation Commission
Department of Natural Resources
The Chancery Building
1120 Lincoln Street, Suite 801
Denver, CO 80203

Re: **30 Day Certification Letter - 318A.e**
PUTTER 27-4HZ – DOC # 401281509
Township 3 North, Range 68 West
Section 27: NWNW
Unit Acreage: 560 Acres
Unit Spacing: T3N/R68W 27:W2, 22: S2SW, 34: NW4
Weld County, Colorado

Dear Director Lepore:

Kerr McGee Oil and Gas Onshore LP (“KMG”) hereby certifies that KMG owns one hundred percent (100%) of the leasehold interest in the mineral rights in the proposed spacing unit. KMG hereby respectfully requests approval of this well.

If you have any questions or issues regarding this permit, please contact our office.

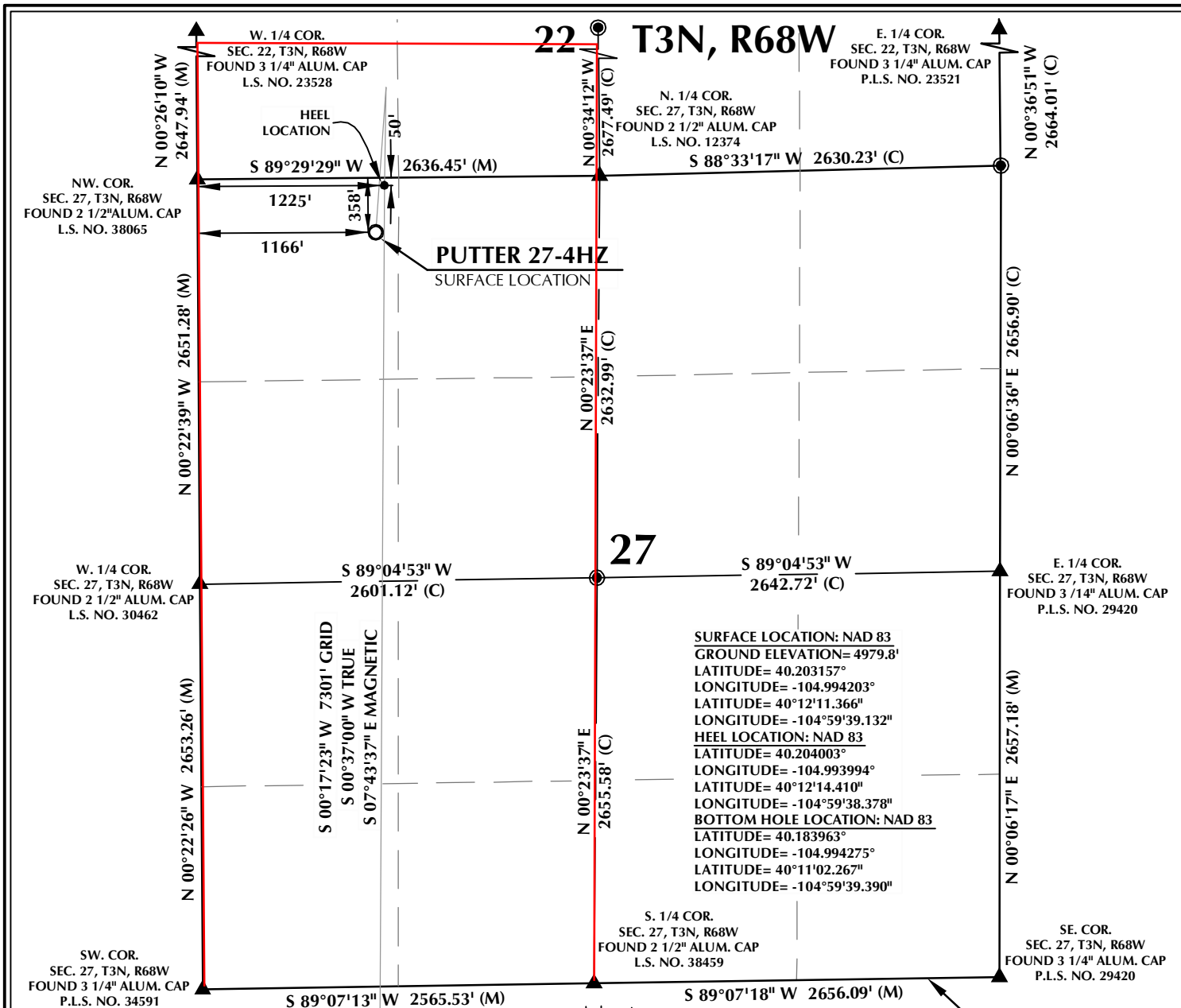
Sincerely,

Kerr-McGee Oil and Gas Onshore LP

A handwritten signature in black ink that reads "Shayelyn Marshall".

Shayelyn Marshall
Regulatory Analyst II

Enclosure



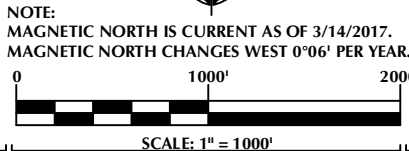
CERTIFICATE OF SURVEYOR:

THIS IS TO CERTIFY THAT THE ABOVE PLAT WAS PREPARED FROM FIELD NOTES OF ACTUAL SURVEY MADE BY ME OR UNDER MY SUPERVISION AND THAT THESE ARE TRUE AND CORRECT TO THE BEST OF MY KNOWLEDGE AND BELIEF. THIS CERTIFICATE DOES NOT REPRESENT A LAND SURVEY PLAT OR IMPROVEMENT SURVEY PLAT AS DEFINED BY C.R.S. 38-51-102 AND CANNOT BE RELIED UPON TO DETERMINE OWNERSHIP.

Randall K. French
 RANDALL K. FRENCH
 PROFESSIONAL LAND SURVEYOR
 COLORADO REGISTRATION NUMBER 38512

NOTICE: ACCORDING TO COLORADO STATE LAW YOU MUST COMMENCE ANY LEGAL ACTION BASED UPON ANY DEFECT IN THIS SURVEY WITHIN THREE YEARS AFTER YOU FIRST DISCOVER SUCH DEFECT. IN NO EVENT MAY ANY ACTION BASED UPON ANY DEFECT IN THIS SURVEY BE COMMENCED MORE THAN TEN YEARS FROM THE DATE ON THE CERTIFICATION SHOWN HEREON.

WELLBORE CONTINUES INTO SECTION 34



NOTES:

- ▲ INDICATES SECTION CORNER
- INDICATES CALCULATED CORNER
- ELEVATION BASED ON NAVD88 (GEOID12B)
- BASIS OF BEARING DERIVED FROM COLORADO COORDINATE SYSTEM OF 1983 NORTH ZONE.
- ALL MEASURED DISTANCES ARE GRID.
- COMBINED SCALE FACTOR: .99972252 CALCULATED FROM THE W. 1/4 CORNER OF SECTION 27, T3N, R68W
- OPERATOR: ROB WILSON / PDOP = 1.4
- SEE ADDENDUM TO WELL LOCATION CERTIFICATE FOR EXISTING IMPROVEMENTS WITHIN 500' OF THE WELL PAD.
- WELL FOOTAGES ARE MEASURED AT RIGHT ANGLES TO THE SECTION LINES.
- THE BOTTOM OF HOLE BEARS S00°17'23"W, 7301' FROM THE HEEL LOCATION.

WELL PAD - PUTTER 27-5HZ

PUTTER 27-4HZ
 WELL LOCATION CERTIFICATE
 358' FNL & 1166' FWL NWNW (SURFACE)
 50' FNL & 1225' FWL NWNW (HEEL)
 LOCATED IN SECTION 27
 2053' FNL & 1139' FWL SWNW (BOTTOM)
 LOCATED IN SECTION 34
 T3N, R68W, 6TH P.M.
 WELD COUNTY, COLORADO

Kerr-McGee Oil & Gas Onshore L.P.
 1099 18th Street
 Denver, Colorado 80202



CONSULTING, LLC

SHERIDAN OFFICE
 1095 Saberton Avenue
 Sheridan, Wyoming 82801
 Phone 307-674-0609

LOVELAND OFFICE
 1635 Foxtrail Drive, Suite 204
 Loveland, Colorado 80538
 Phone 970-776-4331

DRAFTED BY:	LMO	CHECKED BY:	RKF	SHEET NO:
DATE DRAFTED:	3/21/17	DATE SURVEYED:	3/14/17	1
REVISED:		FILE NAME:	16-180	1 OF 2

PROPOSED SPACING UNIT

T3N, R68W

MATCH LINE
SEE SHEET 1

NW. COR.
SEC. 34, T3N, R68W
FOUND 3 1/4" ALUM. CAP
P.L.S. NO. 34591

N. 1/4 COR.
SEC. 34, T3N, R68W
FOUND 2 1/2" ALUM. CAP
L.S. NO. 38459

NE. COR.
SEC. 34, T3N, R68W
FOUND 3 1/4" ALUM. CAP
P.L.S. NO. 29420

W. 1/4 COR.
SEC. 34, T3N, R68W
FOUND 2 1/2" ALUM. CAP
P.L.S. NO. 34591

CENTER 1/4 COR.
SEC. 34, T3N, R68W
FOUND 2 1/2" ALUM. CAP
P.L.S. NO. 7735

E. 1/4 COR.
SEC. 34, T3N, R68W
FOUND 3 1/4" ALUM. CAP
P.L.S. NO. 29420

SW. COR.
SEC. 34, T3N, R68W
FOUND 2 1/2" ALUM. CAP
P.L.S. NO. 36073

S. 1/4 COR.
SEC. 34, T3N, R68W
FOUND 3 1/4" ALUM. CAP
P.L.S. NO. 18482

SE. COR.
SEC. 34, T3N, R68W
FOUND TWO 1" BRASS PLUG
REFERENCE MONUMENTS
PER CORNER RECORD
L.S. NO. 29420

SURFACE LOCATION: NAD 83
GROUND ELEVATION= 4979.8'
LATITUDE= 40.203157°
LONGITUDE= -104.994203°
LATITUDE= 40°12'11.366"
LONGITUDE= -104°59'39.132"
HEEL LOCATION: NAD 83
LATITUDE= 40.204003°
LONGITUDE= -104.993994°
LATITUDE= 40°12'14.410"
LONGITUDE= -104°59'38.378"
BOTTOM HOLE LOCATION: NAD 83
LATITUDE= 40.183963°
LONGITUDE= -104.994275°
LATITUDE= 40°11'02.267"
LONGITUDE= -104°59'39.390"

CERTIFICATE OF SURVEYOR:

THIS IS TO CERTIFY THAT THE ABOVE PLAT WAS PREPARED FROM FIELD NOTES OF ACTUAL SURVEY MADE BY ME OR UNDER MY SUPERVISION AND THAT THE SAME ARE TRUE AND CORRECT TO THE BEST OF MY KNOWLEDGE AND BELIEF. THIS CERTIFICATE DOES NOT REPRESENT A LAND SURVEY PLAT OR IMPROVEMENT SURVEY PLAT AS DEFINED BY C.R.S. 38-51-102 AND CANNOT BE RELIED UPON TO DETERMINE OWNERSHIP.

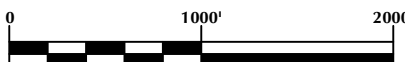
Randall K. French
PROFESSIONAL LAND SURVEYOR
COLORADO REGISTRATION NUMBER 18512
3/21/17

NOTICE:
ACCORDING TO COLORADO STATE LAW YOU MUST COMMENCE ANY LEGAL ACTION BASED UPON ANY DEFECT IN THIS SURVEY WITHIN THREE YEARS AFTER YOU FIRST DISCOVER SUCH DEFECT. IN NO EVENT MAY ANY ACTION BASED UPON ANY DEFECT IN THIS SURVEY BE COMMENCED MORE THAN TEN YEARS FROM THE DATE ON THE CERTIFICATION SHOWN HEREON.

19'37" 8'01"



NOTE:
MAGNETIC NORTH IS CURRENT AS OF 3/14/2017.
MAGNETIC NORTH CHANGES WEST 0°06' PER YEAR.



SCALE: 1" = 1000'

NOTES:

- ▲ INDICATES SECTION CORNER
- INDICATES CALCULATED CORNER
- ELEVATION BASED ON NAVD88 (GEOID12B)
- BASIS OF BEARING DERIVED FROM COLORADO COORDINATE SYSTEM OF 1983 NORTH ZONE.
- ALL MEASURED DISTANCES ARE GRID.
- COMBINED SCALE FACTOR: .99972252 CALCULATED FROM THE W. 1/4 CORNER OF SECTION 27, T3N, R68W
- OPERATOR: ROB WILSON / PDOP = 1.4
- SEE ADDENDUM TO WELL LOCATION CERTIFICATE FOR EXISTING IMPROVEMENTS WITHIN 500' OF THE WELL PAD.
- WELL FOOTAGES ARE MEASURED AT RIGHT ANGLES TO THE SECTION LINES.
- THE BOTTOM OF HOLE BEARS S00°17'23"W, 7301' FROM THE HEEL LOCATION.

WELL PAD - PUTTER 27-5HZ

PUTTER 27-4HZ
WELL LOCATION CERTIFICATE
358' FNL & 1166' FWL NWNW (SURFACE)
50' FNL & 1225' FWL NWNW (HEEL)
LOCATED IN SECTION 27
2053' FNL & 1139' FWL SWNW (BOTTOM)
LOCATED IN SECTION 34
T3N, R68W, 6TH P.M.
WELD COUNTY, COLORADO

**Kerr-McGee Oil &
Gas Onshore L.P.**
1099 18th Street
Denver, Colorado 80202



CONSULTING, LLC

SHERIDAN OFFICE
1095 Saberton Avenue
Sheridan, Wyoming 82801
Phone 307-674-0609

LOVELAND OFFICE
1635 Foxtrail Drive, Suite 204
Loveland, Colorado 80538
Phone 970-776-4331

DRAFTED BY:	LMO	CHECKED BY:	RKF	SHEET NO:
DATE DRAFTED:	3/21/17	DATE SURVEYED:	3/14/17	2
REVISED:		FILE NAME:	16-180	2 OF 2