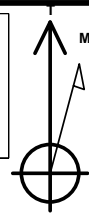
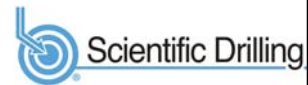


Geodetic System: US State Plane 1983
 Datum: North American Datum 1983
 Ellipsoid: GRS 1980
 Zone: Colorado Northern Zone
 System Datum: Mean Sea Level
 Local North: True

Project: Weld County, CO NAD 83
 Site: Anschutz Equus Farms 4-62-28_27 NWNW Pad
 Well: Anschutz Equus Farms 4-62-28-1609C
 Wellbore: OH
 Design: Plan 2



Azimuths to True North
 Magnetic North: 8.25°



Magnetic Field
 Strength: 52364.0nT
 Dip Angle: 66.95°
 Date: 6/28/2017
 Model: HDGM

Plan: Plan 2 (Anschutz Equus Farms 4-62-28-1609C/OH)

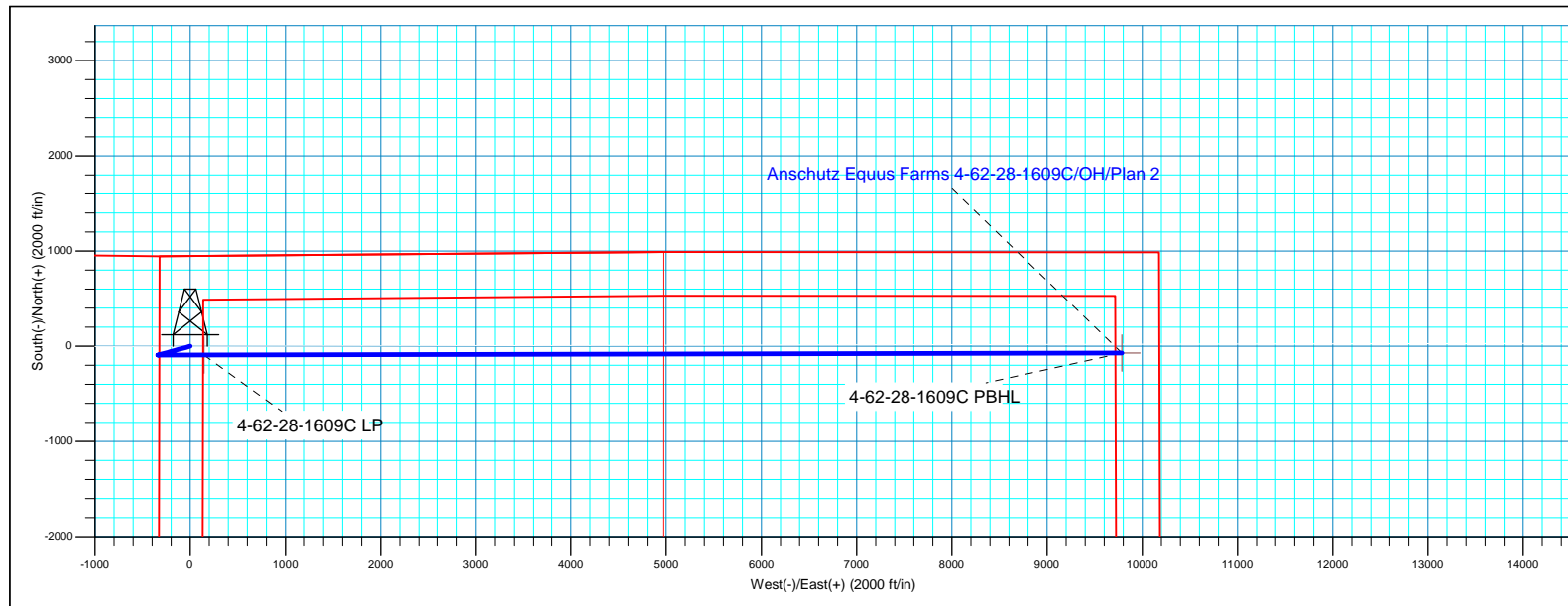
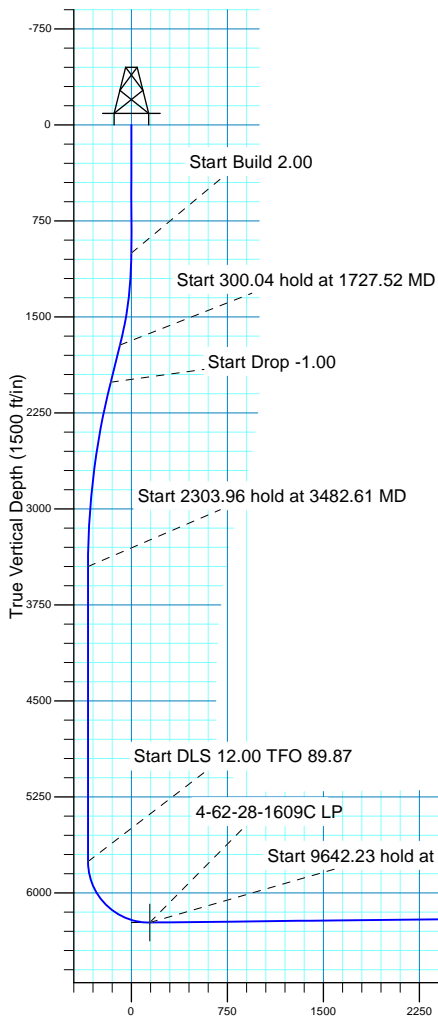
Created By: Seth Burstad Date: 6-28-2017

SECTION DETAILS

MD	Inc	Azi	TVD	+N/-S	+E/-W	Dleg	TFace	VSect
0.00	0.00	0.000	0.00	0.00	0.00	0.00	0.00	0.00
1000.00	0.00	0.000	1000.00	0.00	0.00	0.00	0.00	0.00
1727.52	14.55	254.603	1719.73	-24.40	-88.59	2.00	254.60	-88.64
2027.56	14.55	254.603	2010.14	-44.41	-161.26	0.00	0.00	-161.36
3482.61	0.00	0.000	3449.60	-93.20	-338.43	1.00	180.00	-338.63
5786.57	0.00	0.000	5753.56	-93.20	-338.43	0.00	0.00	-338.63
6541.77	90.62	89.874	6231.00	-92.14	144.23	12.00	89.87	144.03
16183.99	90.62	89.874	6126.00	-70.89	9785.86	0.00	0.00	9785.68

WELL DETAILS: Anschutz Equus Farms 4-62-28-1609C

		GL 4574' & KB 20' @ 4594.00ft		4574.00	Longitude
+N/-S	+E/-W	Northing	Easting	Latitude	
0.00	0.00	1349662.20	3324338.66	40° 17' 14.589 N	104° 20' 14.460 W



Vertical Section at 89.874° (1500 ft/in)



Bill Barrett Corporation

Bill Barrett Corp.

Weld County, CO NAD 83

Anschutz Equus Farms 4-62-28_27 NWNW Pad

Anschutz Equus Farms 4-62-28-1609C

OH

Plan: Plan 2

Standard Planning Report

28 June, 2017



Scientific Drilling

www.scientificdrilling.com



Database:	Casper District	Local Co-ordinate Reference:	Well Anschutz Equus Farms 4-62-28-1609C
Company:	Bill Barrett Corp.	TVD Reference:	GL 4574' & KB 20' @ 4594.00ft
Project:	Weld County, CO NAD 83	MD Reference:	GL 4574' & KB 20' @ 4594.00ft
Site:	Anschutz Equus Farms 4-62-28_27 NWNW Pad	North Reference:	True
Well:	Anschutz Equus Farms 4-62-28-1609C	Survey Calculation Method:	Minimum Curvature
Wellbore:	OH		
Design:	Plan 2		

Project	Weld County, CO NAD 83		
Map System:	US State Plane 1983	System Datum:	Mean Sea Level
Geo Datum:	North American Datum 1983		
Map Zone:	Colorado Northern Zone		

Site						Anschutz Equus Farms 4-62-28_27 NWNW Pad											
Site Position:			Northing:			1,350,001.24 usft			Latitude:			40° 17' 17.948 N					
From:			Lat/Long			Easting:			3,324,269.21 usft			Longitude:			104° 20' 15.299 W		
Position Uncertainty:			0.00 ft			Slot Radius:			13.200 in			Grid Convergence:			0.75		

Well	Anschutz Equus Farms 4-62-28-1609C, 950' FNL 316' FWL Sec 28 T4N R62W					
Well Position	+N-S	-339.92 ft	Northing:	1,349,662.20 usft	Latitude:	40° 17' 14.589 N
	+E-W	65.00 ft	Easting:	3,324,338.67 usft	Longitude:	104° 20' 14.460 W
Position Uncertainty		0.00 ft	Wellhead Elevation:	0.00 ft	Ground Level:	4,574.00 ft

Wellbore	OH				
Magnetics	Model Name	Sample Date	Declination (°)	Dip Angle (°)	Field Strength (nT)
	BGGM2016	4/24/2017	8.14	66.87	52,418
	HDGM	6/28/2017	8.25	66.95	52,364

Design	Plan 2			
Audit Notes:				
Version:	Phase:	PLAN	Tie On Depth:	0.00
Vertical Section:	Depth From (TVD) (ft)	+N/-S (ft)	+E/-W (ft)	Direction (°)
	0.00	0.00	0.00	89.874

Plan Sections										
Measured Depth (ft)	Inclination (°)	Azimuth (°)	Vertical Depth (ft)	+N/-S (ft)	+E/-W (ft)	Dogleg Rate (°/100ft)	Build Rate (°/100ft)	Turn Rate (°/100ft)	TFO (°)	Target
0.00	0.00	0.000	0.00	0.00	0.00	0.00	0.00	0.00	0.00	
1,000.00	0.00	0.000	1,000.00	0.00	0.00	0.00	0.00	0.00	0.00	
1,727.52	14.55	254.603	1,719.73	-24.40	-88.59	2.00	2.00	0.00	254.60	
2,027.56	14.55	254.603	2,010.14	-44.41	-161.26	0.00	0.00	0.00	0.00	
3,482.61	0.00	0.000	3,449.60	-93.20	-338.43	1.00	-1.00	0.00	180.00	
5,786.57	0.00	0.000	5,753.56	-93.20	-338.43	0.00	0.00	0.00	0.00	
6,541.77	90.62	89.874	6,231.00	-92.14	144.23	12.00	12.00	11.90	89.87	
16,183.99	90.62	89.874	6,126.00	-70.89	9,785.86	0.00	0.00	0.00	0.00	4-62-28-1609C PBHL

Database:	Casper District	Local Co-ordinate Reference:	Well Anschutz Equus Farms 4-62-28-1609C
Company:	Bill Barrett Corp.	TVD Reference:	GL 4574' & KB 20' @ 4594.00ft
Project:	Weld County, CO NAD 83	MD Reference:	GL 4574' & KB 20' @ 4594.00ft
Site:	Anschutz Equus Farms 4-62-28_27 NWNW Pad	North Reference:	True
Well:	Anschutz Equus Farms 4-62-28-1609C	Survey Calculation Method:	Minimum Curvature
Wellbore:	OH		
Design:	Plan 2		

Planned Survey

Measured Depth (ft)	Inclination (°)	Azimuth (°)	Vertical Depth (ft)	+N/-S (ft)	+E/-W (ft)	Vertical Section (ft)	Dogleg Rate (°/100ft)	Build Rate (°/100ft)	Turn Rate (°/100ft)
0.00	0.00	0.000	0.00	0.00	0.00	0.00	0.00	0.00	0.00
100.00	0.00	0.000	100.00	0.00	0.00	0.00	0.00	0.00	0.00
200.00	0.00	0.000	200.00	0.00	0.00	0.00	0.00	0.00	0.00
300.00	0.00	0.000	300.00	0.00	0.00	0.00	0.00	0.00	0.00
400.00	0.00	0.000	400.00	0.00	0.00	0.00	0.00	0.00	0.00
500.00	0.00	0.000	500.00	0.00	0.00	0.00	0.00	0.00	0.00
600.00	0.00	0.000	600.00	0.00	0.00	0.00	0.00	0.00	0.00
700.00	0.00	0.000	700.00	0.00	0.00	0.00	0.00	0.00	0.00
800.00	0.00	0.000	800.00	0.00	0.00	0.00	0.00	0.00	0.00
900.00	0.00	0.000	900.00	0.00	0.00	0.00	0.00	0.00	0.00
1,000.00	0.00	0.000	1,000.00	0.00	0.00	0.00	0.00	0.00	0.00
Start Build 2.00									
1,100.00	2.00	254.603	1,099.98	-0.46	-1.68	-1.68	2.00	2.00	0.00
1,200.00	4.00	254.603	1,199.84	-1.85	-6.73	-6.73	2.00	2.00	0.00
1,300.00	6.00	254.603	1,299.45	-4.17	-15.13	-15.14	2.00	2.00	0.00
1,400.00	8.00	254.603	1,398.70	-7.40	-26.88	-26.90	2.00	2.00	0.00
1,500.00	10.00	254.603	1,497.47	-11.56	-41.96	-41.99	2.00	2.00	0.00
1,600.00	12.00	254.603	1,595.62	-16.62	-60.36	-60.39	2.00	2.00	0.00
1,700.00	14.00	254.603	1,693.06	-22.59	-82.04	-82.09	2.00	2.00	0.00
1,727.52	14.55	254.603	1,719.73	-24.40	-88.59	-88.64	2.00	2.00	0.00
Start 300.04 hold at 1727.52 MD									
1,800.00	14.55	254.603	1,789.88	-29.23	-106.14	-106.20	0.00	0.00	0.00
1,900.00	14.55	254.603	1,886.67	-35.90	-130.36	-130.44	0.00	0.00	0.00
2,000.00	14.55	254.603	1,983.47	-42.57	-154.58	-154.68	0.00	0.00	0.00
2,027.56	14.55	254.603	2,010.14	-44.41	-161.26	-161.36	0.00	0.00	0.00
Start Drop -1.00									
2,100.00	13.83	254.603	2,080.37	-49.12	-178.38	-178.48	1.00	-1.00	0.00
2,200.00	12.83	254.603	2,177.68	-55.24	-200.60	-200.72	1.00	-1.00	0.00
2,300.00	11.83	254.603	2,275.37	-60.91	-221.18	-221.31	1.00	-1.00	0.00
2,400.00	10.83	254.603	2,373.42	-66.12	-240.11	-240.26	1.00	-1.00	0.00
2,500.00	9.83	254.603	2,471.80	-70.88	-257.40	-257.55	1.00	-1.00	0.00
2,600.00	8.83	254.603	2,570.48	-75.19	-273.02	-273.18	1.00	-1.00	0.00
2,700.00	7.83	254.603	2,669.42	-79.03	-286.98	-287.15	1.00	-1.00	0.00
2,800.00	6.83	254.603	2,768.61	-82.42	-299.27	-299.45	1.00	-1.00	0.00
2,900.00	5.83	254.603	2,868.00	-85.34	-309.90	-310.08	1.00	-1.00	0.00
3,000.00	4.83	254.603	2,967.56	-87.81	-318.85	-319.04	1.00	-1.00	0.00
3,100.00	3.83	254.603	3,067.28	-89.81	-326.12	-326.31	1.00	-1.00	0.00
3,200.00	2.83	254.603	3,167.11	-91.35	-331.71	-331.91	1.00	-1.00	0.00
3,300.00	1.83	254.603	3,267.02	-92.43	-335.62	-335.83	1.00	-1.00	0.00
3,400.00	0.83	254.603	3,367.00	-93.04	-337.86	-338.06	1.00	-1.00	0.00
3,482.61	0.00	0.000	3,449.60	-93.20	-338.43	-338.63	1.00	-1.00	0.00
Start 2303.96 hold at 3482.61 MD									
3,500.00	0.00	0.000	3,466.99	-93.20	-338.43	-338.63	0.00	0.00	0.00
3,600.00	0.00	0.000	3,566.99	-93.20	-338.43	-338.63	0.00	0.00	0.00
3,700.00	0.00	0.000	3,666.99	-93.20	-338.43	-338.63	0.00	0.00	0.00
3,800.00	0.00	0.000	3,766.99	-93.20	-338.43	-338.63	0.00	0.00	0.00
3,900.00	0.00	0.000	3,866.99	-93.20	-338.43	-338.63	0.00	0.00	0.00
4,000.00	0.00	0.000	3,966.99	-93.20	-338.43	-338.63	0.00	0.00	0.00
4,100.00	0.00	0.000	4,066.99	-93.20	-338.43	-338.63	0.00	0.00	0.00
4,200.00	0.00	0.000	4,166.99	-93.20	-338.43	-338.63	0.00	0.00	0.00
4,300.00	0.00	0.000	4,266.99	-93.20	-338.43	-338.63	0.00	0.00	0.00
4,400.00	0.00	0.000	4,366.99	-93.20	-338.43	-338.63	0.00	0.00	0.00
4,500.00	0.00	0.000	4,466.99	-93.20	-338.43	-338.63	0.00	0.00	0.00

Database:	Casper District	Local Co-ordinate Reference:	Well Anschutz Equus Farms 4-62-28-1609C
Company:	Bill Barrett Corp.	TVD Reference:	GL 4574' & KB 20' @ 4594.00ft
Project:	Weld County, CO NAD 83	MD Reference:	GL 4574' & KB 20' @ 4594.00ft
Site:	Anschutz Equus Farms 4-62-28_27 NWNW Pad	North Reference:	True
Well:	Anschutz Equus Farms 4-62-28-1609C	Survey Calculation Method:	Minimum Curvature
Wellbore:	OH		
Design:	Plan 2		

Planned Survey									
Measured Depth (ft)	Inclination (°)	Azimuth (°)	Vertical Depth (ft)	+N/-S (ft)	+E/-W (ft)	Vertical Section (ft)	Dogleg Rate (°/100ft)	Build Rate (°/100ft)	Turn Rate (°/100ft)
4,600.00	0.00	0.000	4,566.99	-93.20	-338.43	-338.63	0.00	0.00	0.00
4,700.00	0.00	0.000	4,666.99	-93.20	-338.43	-338.63	0.00	0.00	0.00
4,800.00	0.00	0.000	4,766.99	-93.20	-338.43	-338.63	0.00	0.00	0.00
4,900.00	0.00	0.000	4,866.99	-93.20	-338.43	-338.63	0.00	0.00	0.00
5,000.00	0.00	0.000	4,966.99	-93.20	-338.43	-338.63	0.00	0.00	0.00
5,100.00	0.00	0.000	5,066.99	-93.20	-338.43	-338.63	0.00	0.00	0.00
5,200.00	0.00	0.000	5,166.99	-93.20	-338.43	-338.63	0.00	0.00	0.00
5,300.00	0.00	0.000	5,266.99	-93.20	-338.43	-338.63	0.00	0.00	0.00
5,400.00	0.00	0.000	5,366.99	-93.20	-338.43	-338.63	0.00	0.00	0.00
5,500.00	0.00	0.000	5,466.99	-93.20	-338.43	-338.63	0.00	0.00	0.00
5,600.00	0.00	0.000	5,566.99	-93.20	-338.43	-338.63	0.00	0.00	0.00
5,700.00	0.00	0.000	5,666.99	-93.20	-338.43	-338.63	0.00	0.00	0.00
5,786.57	0.00	0.000	5,753.56	-93.20	-338.43	-338.63	0.00	0.00	0.00
Start DLS 12.00 TFO 89.87									
5,800.00	1.61	89.874	5,766.99	-93.20	-338.24	-338.45	12.00	12.00	0.00
5,900.00	13.61	89.874	5,865.93	-93.17	-325.02	-325.22	12.00	12.00	0.00
6,000.00	25.61	89.874	5,959.96	-93.10	-291.52	-291.72	12.00	12.00	0.00
6,100.00	37.61	89.874	6,044.96	-92.98	-239.20	-239.40	12.00	12.00	0.00
6,200.00	49.61	89.874	6,117.23	-92.83	-170.34	-170.55	12.00	12.00	0.00
6,300.00	61.61	89.874	6,173.61	-92.65	-87.97	-88.18	12.00	12.00	0.00
6,400.00	73.61	89.874	6,211.63	-92.44	4.32	4.12	12.00	12.00	0.00
6,500.00	85.61	89.874	6,229.63	-92.23	102.50	102.30	12.00	12.00	0.00
6,541.77	90.62	89.874	6,231.00	-92.14	144.23	144.03	12.00	12.00	0.00
Start 9642.23 hold at 6541.77 MD									
6,600.00	90.62	89.874	6,230.36	-92.01	202.46	202.26	0.00	0.00	0.00
6,700.00	90.62	89.874	6,229.27	-91.79	302.46	302.25	0.00	0.00	0.00
6,800.00	90.62	89.874	6,228.18	-91.57	402.45	402.25	0.00	0.00	0.00
6,900.00	90.62	89.874	6,227.10	-91.35	502.44	502.24	0.00	0.00	0.00
7,000.00	90.62	89.874	6,226.01	-91.13	602.44	602.24	0.00	0.00	0.00
7,100.00	90.62	89.874	6,224.92	-90.91	702.43	702.23	0.00	0.00	0.00
7,200.00	90.62	89.874	6,223.83	-90.69	802.43	802.22	0.00	0.00	0.00
7,300.00	90.62	89.874	6,222.74	-90.47	902.42	902.22	0.00	0.00	0.00
7,400.00	90.62	89.874	6,221.65	-90.24	1,002.41	1,002.21	0.00	0.00	0.00
7,500.00	90.62	89.874	6,220.56	-90.02	1,102.41	1,102.21	0.00	0.00	0.00
7,600.00	90.62	89.874	6,219.47	-89.80	1,202.40	1,202.20	0.00	0.00	0.00
7,700.00	90.62	89.874	6,218.38	-89.58	1,302.39	1,302.19	0.00	0.00	0.00
7,800.00	90.62	89.874	6,217.30	-89.36	1,402.39	1,402.19	0.00	0.00	0.00
7,900.00	90.62	89.874	6,216.21	-89.14	1,502.38	1,502.18	0.00	0.00	0.00
8,000.00	90.62	89.874	6,215.12	-88.92	1,602.38	1,602.18	0.00	0.00	0.00
8,100.00	90.62	89.874	6,214.03	-88.70	1,702.37	1,702.17	0.00	0.00	0.00
8,200.00	90.62	89.874	6,212.94	-88.48	1,802.36	1,802.16	0.00	0.00	0.00
8,300.00	90.62	89.874	6,211.85	-88.26	1,902.36	1,902.16	0.00	0.00	0.00
8,400.00	90.62	89.874	6,210.76	-88.04	2,002.35	2,002.15	0.00	0.00	0.00
8,500.00	90.62	89.874	6,209.67	-87.82	2,102.35	2,102.15	0.00	0.00	0.00
8,600.00	90.62	89.874	6,208.58	-87.60	2,202.34	2,202.14	0.00	0.00	0.00
8,700.00	90.62	89.874	6,207.50	-87.38	2,302.33	2,302.14	0.00	0.00	0.00
8,800.00	90.62	89.874	6,206.41	-87.16	2,402.33	2,402.13	0.00	0.00	0.00
8,900.00	90.62	89.874	6,205.32	-86.94	2,502.32	2,502.12	0.00	0.00	0.00
9,000.00	90.62	89.874	6,204.23	-86.72	2,602.31	2,602.12	0.00	0.00	0.00
9,100.00	90.62	89.874	6,203.14	-86.50	2,702.31	2,702.11	0.00	0.00	0.00
9,200.00	90.62	89.874	6,202.05	-86.28	2,802.30	2,802.11	0.00	0.00	0.00
9,300.00	90.62	89.874	6,200.96	-86.06	2,902.30	2,902.10	0.00	0.00	0.00
9,400.00	90.62	89.874	6,199.87	-85.84	3,002.29	3,002.09	0.00	0.00	0.00

Database:	Casper District	Local Co-ordinate Reference:	Well Anschutz Equus Farms 4-62-28-1609C
Company:	Bill Barrett Corp.	TVD Reference:	GL 4574' & KB 20' @ 4594.00ft
Project:	Weld County, CO NAD 83	MD Reference:	GL 4574' & KB 20' @ 4594.00ft
Site:	Anschutz Equus Farms 4-62-28_27 NWNW Pad	North Reference:	True
Well:	Anschutz Equus Farms 4-62-28-1609C	Survey Calculation Method:	Minimum Curvature
Wellbore:	OH		
Design:	Plan 2		

Planned Survey

Measured Depth (ft)	Inclination (°)	Azimuth (°)	Vertical Depth (ft)	+N/-S (ft)	+E/-W (ft)	Vertical Section (ft)	Dogleg Rate (°/100ft)	Build Rate (°/100ft)	Turn Rate (°/100ft)
9,500.00	90.62	89.874	6,198.78	-85.62	3,102.28	3,102.09	0.00	0.00	0.00
9,600.00	90.62	89.874	6,197.69	-85.40	3,202.28	3,202.08	0.00	0.00	0.00
9,700.00	90.62	89.874	6,196.61	-85.18	3,302.27	3,302.08	0.00	0.00	0.00
9,800.00	90.62	89.874	6,195.52	-84.96	3,402.26	3,402.07	0.00	0.00	0.00
9,900.00	90.62	89.874	6,194.43	-84.73	3,502.26	3,502.06	0.00	0.00	0.00
10,000.00	90.62	89.874	6,193.34	-84.51	3,602.25	3,602.06	0.00	0.00	0.00
10,100.00	90.62	89.874	6,192.25	-84.29	3,702.25	3,702.05	0.00	0.00	0.00
10,200.00	90.62	89.874	6,191.16	-84.07	3,802.24	3,802.05	0.00	0.00	0.00
10,300.00	90.62	89.874	6,190.07	-83.85	3,902.23	3,902.04	0.00	0.00	0.00
10,400.00	90.62	89.874	6,188.98	-83.63	4,002.23	4,002.03	0.00	0.00	0.00
10,500.00	90.62	89.874	6,187.89	-83.41	4,102.22	4,102.03	0.00	0.00	0.00
10,600.00	90.62	89.874	6,186.81	-83.19	4,202.22	4,202.02	0.00	0.00	0.00
10,700.00	90.62	89.874	6,185.72	-82.97	4,302.21	4,302.02	0.00	0.00	0.00
10,800.00	90.62	89.874	6,184.63	-82.75	4,402.20	4,402.01	0.00	0.00	0.00
10,900.00	90.62	89.874	6,183.54	-82.53	4,502.20	4,502.00	0.00	0.00	0.00
11,000.00	90.62	89.874	6,182.45	-82.31	4,602.19	4,602.00	0.00	0.00	0.00
11,100.00	90.62	89.874	6,181.36	-82.09	4,702.18	4,701.99	0.00	0.00	0.00
11,200.00	90.62	89.874	6,180.27	-81.87	4,802.18	4,801.99	0.00	0.00	0.00
11,300.00	90.62	89.874	6,179.18	-81.65	4,902.17	4,901.98	0.00	0.00	0.00
11,400.00	90.62	89.874	6,178.09	-81.43	5,002.17	5,001.98	0.00	0.00	0.00
11,500.00	90.62	89.874	6,177.01	-81.21	5,102.16	5,101.97	0.00	0.00	0.00
11,600.00	90.62	89.874	6,175.92	-80.99	5,202.15	5,201.96	0.00	0.00	0.00
11,700.00	90.62	89.874	6,174.83	-80.77	5,302.15	5,301.96	0.00	0.00	0.00
11,800.00	90.62	89.874	6,173.74	-80.55	5,402.14	5,401.95	0.00	0.00	0.00
11,900.00	90.62	89.874	6,172.65	-80.33	5,502.14	5,501.95	0.00	0.00	0.00
12,000.00	90.62	89.874	6,171.56	-80.11	5,602.13	5,601.94	0.00	0.00	0.00
12,100.00	90.62	89.874	6,170.47	-79.89	5,702.12	5,701.93	0.00	0.00	0.00
12,200.00	90.62	89.874	6,169.38	-79.67	5,802.12	5,801.93	0.00	0.00	0.00
12,300.00	90.62	89.874	6,168.29	-79.45	5,902.11	5,901.92	0.00	0.00	0.00
12,400.00	90.62	89.874	6,167.20	-79.22	6,002.10	6,001.92	0.00	0.00	0.00
12,500.00	90.62	89.874	6,166.12	-79.00	6,102.10	6,101.91	0.00	0.00	0.00
12,600.00	90.62	89.874	6,165.03	-78.78	6,202.09	6,201.90	0.00	0.00	0.00
12,700.00	90.62	89.874	6,163.94	-78.56	6,302.09	6,301.90	0.00	0.00	0.00
12,800.00	90.62	89.874	6,162.85	-78.34	6,402.08	6,401.89	0.00	0.00	0.00
12,900.00	90.62	89.874	6,161.76	-78.12	6,502.07	6,501.89	0.00	0.00	0.00
13,000.00	90.62	89.874	6,160.67	-77.90	6,602.07	6,601.88	0.00	0.00	0.00
13,100.00	90.62	89.874	6,159.58	-77.68	6,702.06	6,701.87	0.00	0.00	0.00
13,200.00	90.62	89.874	6,158.49	-77.46	6,802.06	6,801.87	0.00	0.00	0.00
13,300.00	90.62	89.874	6,157.40	-77.24	6,902.05	6,901.86	0.00	0.00	0.00
13,400.00	90.62	89.874	6,156.32	-77.02	7,002.04	7,001.86	0.00	0.00	0.00
13,500.00	90.62	89.874	6,155.23	-76.80	7,102.04	7,101.85	0.00	0.00	0.00
13,600.00	90.62	89.874	6,154.14	-76.58	7,202.03	7,201.84	0.00	0.00	0.00
13,700.00	90.62	89.874	6,153.05	-76.36	7,302.02	7,301.84	0.00	0.00	0.00
13,800.00	90.62	89.874	6,151.96	-76.14	7,402.02	7,401.83	0.00	0.00	0.00
13,900.00	90.62	89.874	6,150.87	-75.92	7,502.01	7,501.83	0.00	0.00	0.00
14,000.00	90.62	89.874	6,149.78	-75.70	7,602.01	7,601.82	0.00	0.00	0.00
14,100.00	90.62	89.874	6,148.69	-75.48	7,702.00	7,701.82	0.00	0.00	0.00
14,200.00	90.62	89.874	6,147.60	-75.26	7,801.99	7,801.81	0.00	0.00	0.00
14,300.00	90.62	89.874	6,146.52	-75.04	7,901.99	7,901.80	0.00	0.00	0.00
14,400.00	90.62	89.874	6,145.43	-74.82	8,001.98	8,001.80	0.00	0.00	0.00
14,500.00	90.62	89.874	6,144.34	-74.60	8,101.97	8,101.79	0.00	0.00	0.00
14,600.00	90.62	89.874	6,143.25	-74.38	8,201.97	8,201.79	0.00	0.00	0.00
14,700.00	90.62	89.874	6,142.16	-74.16	8,301.96	8,301.78	0.00	0.00	0.00

Database:	Casper District	Local Co-ordinate Reference:	Well Anschutz Equus Farms 4-62-28-1609C
Company:	Bill Barrett Corp.	TVD Reference:	GL 4574' & KB 20' @ 4594.00ft
Project:	Weld County, CO NAD 83	MD Reference:	GL 4574' & KB 20' @ 4594.00ft
Site:	Anschutz Equus Farms 4-62-28_27 NWNW Pad	North Reference:	True
Well:	Anschutz Equus Farms 4-62-28-1609C	Survey Calculation Method:	Minimum Curvature
Wellbore:	OH		
Design:	Plan 2		

Planned Survey										
Measured Depth (ft)	Inclination (°)	Azimuth (°)	Vertical Depth (ft)	+N/-S (ft)	+E/-W (ft)	Vertical Section (ft)	Dogleg Rate (°/100ft)	Build Rate (°/100ft)	Turn Rate (°/100ft)	
14,800.00	90.62	89.874	6,141.07	-73.94	8,401.96	8,401.77	0.00	0.00	0.00	
14,900.00	90.62	89.874	6,139.98	-73.72	8,501.95	8,501.77	0.00	0.00	0.00	
15,000.00	90.62	89.874	6,138.89	-73.49	8,601.94	8,601.76	0.00	0.00	0.00	
15,100.00	90.62	89.874	6,137.80	-73.27	8,701.94	8,701.76	0.00	0.00	0.00	
15,200.00	90.62	89.874	6,136.72	-73.05	8,801.93	8,801.75	0.00	0.00	0.00	
15,300.00	90.62	89.874	6,135.63	-72.83	8,901.93	8,901.74	0.00	0.00	0.00	
15,400.00	90.62	89.874	6,134.54	-72.61	9,001.92	9,001.74	0.00	0.00	0.00	
15,500.00	90.62	89.874	6,133.45	-72.39	9,101.91	9,101.73	0.00	0.00	0.00	
15,600.00	90.62	89.874	6,132.36	-72.17	9,201.91	9,201.73	0.00	0.00	0.00	
15,700.00	90.62	89.874	6,131.27	-71.95	9,301.90	9,301.72	0.00	0.00	0.00	
15,800.00	90.62	89.874	6,130.18	-71.73	9,401.89	9,401.71	0.00	0.00	0.00	
15,900.00	90.62	89.874	6,129.09	-71.51	9,501.89	9,501.71	0.00	0.00	0.00	
16,000.00	90.62	89.874	6,128.00	-71.29	9,601.88	9,601.70	0.00	0.00	0.00	
16,100.00	90.62	89.874	6,126.91	-71.07	9,701.88	9,701.70	0.00	0.00	0.00	
16,183.99	90.62	89.874	6,126.00	-70.89	9,785.86	9,785.68	0.00	0.00	0.00	
TD at 16183.99										

Design Targets										
Target Name	Dip Angle (°)	Dip Dir. (°)	TVD (ft)	+N/-S (ft)	+E/-W (ft)	Northing (usft)	Easting (usft)	Latitude	Longitude	
- hit/miss target										
- Shape										
4-62-28-1609C PBHL	0.00	0.000	6,126.00	-70.89	9,785.86	1,349,719.62	3,334,124.60	40° 17' 13.870 N	104° 18' 8.179 W	
- plan hits target center										
- Point										
4-62-28-1609C LP	0.00	0.000	6,231.00	-92.13	144.23	1,349,571.97	3,324,484.09	40° 17' 13.679 N	104° 20' 12.599 W	
- plan misses target center by 0.01ft at 6541.76ft MD (6231.00 TVD, -92.14 N, 144.23 E)										
- Point										

Plan Annotations					
Measured Depth (ft)	Vertical Depth (ft)	Local Coordinates			
		+N/-S (ft)	+E/-W (ft)	Comment	
1,000.00	1,000.00	0.00	0.00	Start Build 2.00	
1,727.52	1,719.73	-24.40	-88.59	Start 300.04 hold at 1727.52 MD	
2,027.56	2,010.14	-44.41	-161.26	Start Drop -1.00	
3,482.61	3,449.60	-93.20	-338.43	Start 2303.96 hold at 3482.61 MD	
5,786.57	5,753.56	-93.20	-338.43	Start DLS 12.00 TFO 89.87	
6,541.77	6,231.00	-92.14	144.23	Start 9642.23 hold at 6541.77 MD	
16,183.99	6,126.00	-70.89	9,785.86	TD at 16183.99	