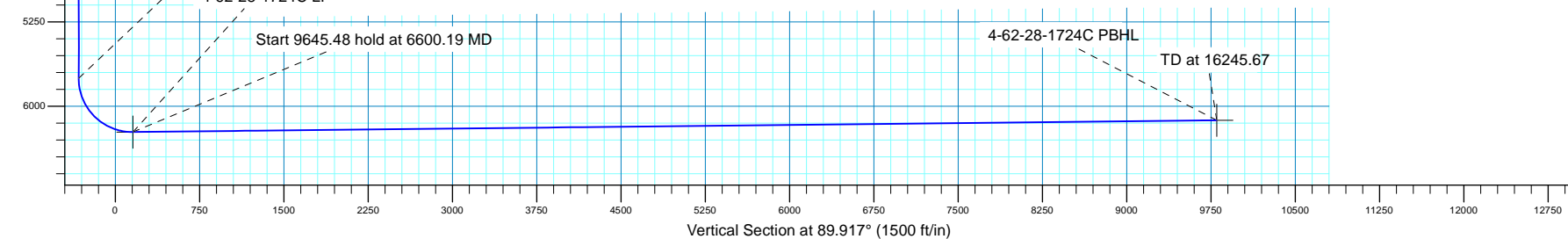
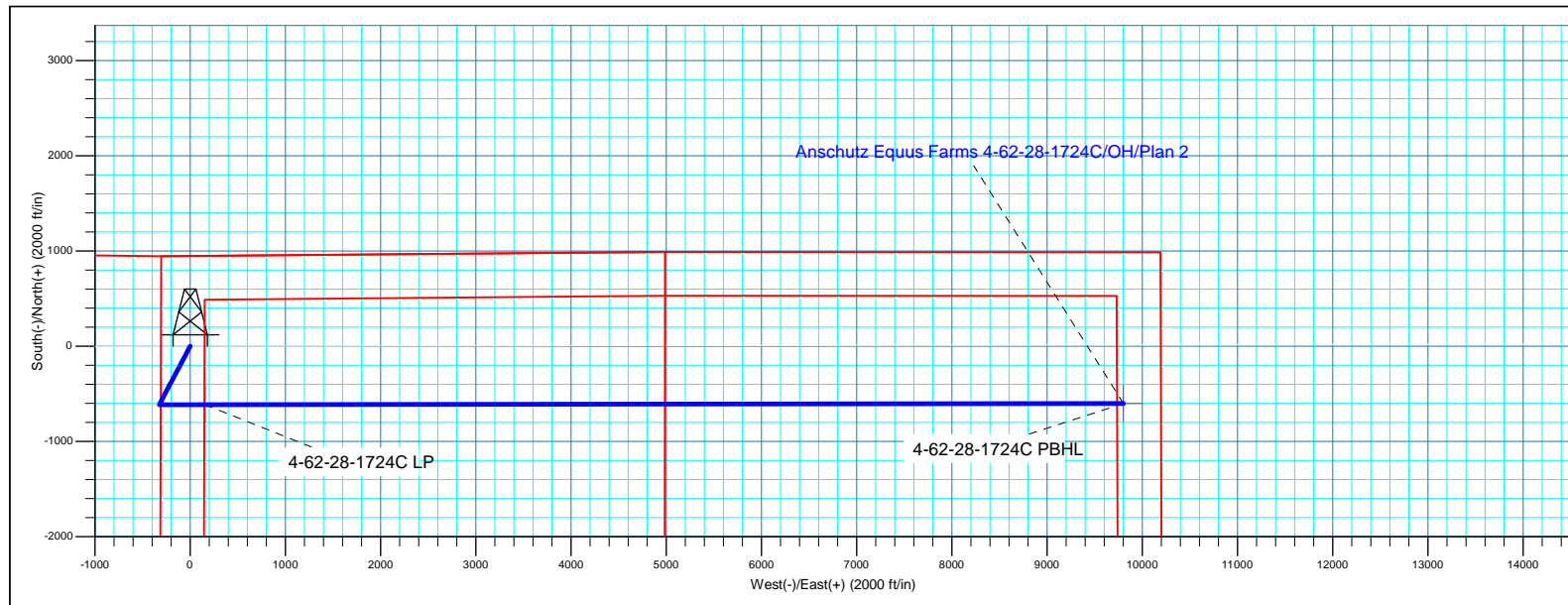
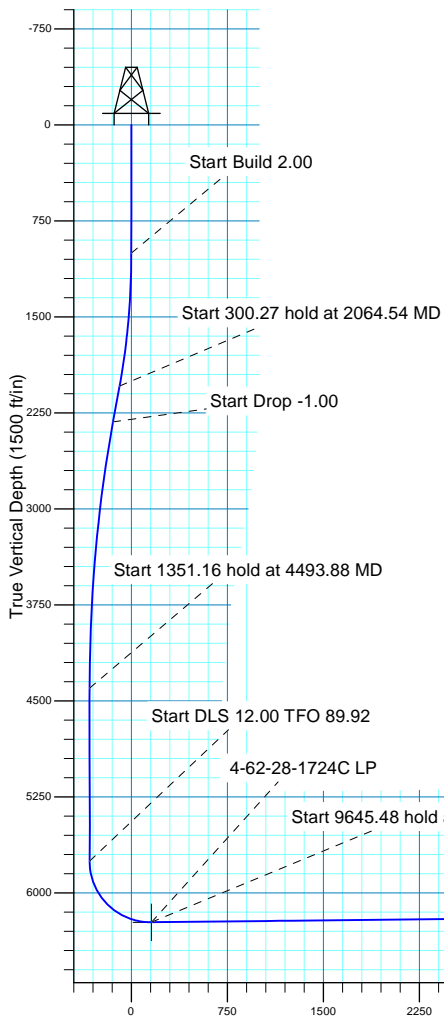

**SECTION DETAILS**

MD	Inc	Azi	TVD	+N/-S	+E/-W	Dleg	TFace	VSect
0.00	0.00	0.000	0.00	0.00	0.00	0.00	0.00	0.00
1000.00	0.00	0.000	1000.00	0.00	0.00	0.00	0.00	0.00
2064.54	21.29	207.879	2040.21	-172.83	-91.43	2.00	207.88	-91.68
2364.81	21.29	207.879	2319.99	-269.20	-142.41	0.00	0.00	-142.80
4493.88	0.00	0.000	4400.40	-614.86	-325.27	1.00	180.00	-326.16
5845.04	0.00	0.000	5751.56	-614.86	-325.27	0.00	0.00	-326.16
6600.19	90.62	89.917	6229.00	-614.16	157.34	12.00	89.92	156.45
16245.67	90.62	89.917	6125.00	-600.20	9802.25	0.00	0.00	9801.37

**WELL DETAILS:** Anschutz Equus Farms 4-62-28-1724C

		GL 4574' & KB 20' @ 4594.00ft		4574.00	Longitude
+N/-S	+E/-W	Northing	Easting	Latitude	
0.00	0.00	1349662.01	3324323.88	40° 17' 14.589 N	104° 20' 14.651 W





**Bill Barrett Corporation**

## **Bill Barrett Corp.**

**Weld County, CO NAD 83**

**Anschutz Equus Farms 4-62-28\_27 NWNW Pad**

**Anschutz Equus Farms 4-62-28-1724C**

**OH**

**Plan: Plan 2**

## **Standard Planning Report**

**28 June, 2017**



**Scientific Drilling**

[www.scientificdrilling.com](http://www.scientificdrilling.com)



<b>Database:</b>	Casper District	<b>Local Co-ordinate Reference:</b>	Well Anschutz Equus Farms 4-62-28-1724C
<b>Company:</b>	Bill Barrett Corp.	<b>TVD Reference:</b>	GL 4574' & KB 20' @ 4594.00ft
<b>Project:</b>	Weld County, CO NAD 83	<b>MD Reference:</b>	GL 4574' & KB 20' @ 4594.00ft
<b>Site:</b>	Anschutz Equus Farms 4-62-28_27 NWNW Pad	<b>North Reference:</b>	True
<b>Well:</b>	Anschutz Equus Farms 4-62-28-1724C	<b>Survey Calculation Method:</b>	Minimum Curvature
<b>Wellbore:</b>	OH		
<b>Design:</b>	Plan 2		

<b>Project</b>	Weld County, CO NAD 83		
<b>Map System:</b>	US State Plane 1983	<b>System Datum:</b>	Mean Sea Level
<b>Geo Datum:</b>	North American Datum 1983		
<b>Map Zone:</b>	Colorado Northern Zone		

Site		Anschutz Equus Farms 4-62-28_27 NWNW Pad			
Site Position:		Northing:	1,350,001.24 usft	Latitude:	40° 17' 17.948 N
From:	Lat/Long	Easting:	3,324,269.21 usft	Longitude:	104° 20' 15.299 W
Position Uncertainty:	0.00 ft	Slot Radius:	13.200 in	Grid Convergence:	0.75 °

Well	Anschutz Equus Farms 4-62-28-1724C, 950' FNL 301' FWL Sec 28 T4N R62W					
Well Position	+N/-S	-339.92 ft	Northing:	1,349,662.01 usft	Latitude:	40° 17' 14.589 N
	+E/-W	50.22 ft	Easting:	3,324,323.88 usft	Longitude:	104° 20' 14.651 W
Position Uncertainty		0.00 ft	Wellhead Elevation:	0.00 ft	Ground Level:	4,574.00 ft

<b>Wellbore</b>	OH				
<b>Magnetics</b>	<b>Model Name</b>	<b>Sample Date</b>	<b>Declination (°)</b>	<b>Dip Angle (°)</b>	<b>Field Strength (nT)</b>
	BGGM2016	4/24/2017	8.14	66.87	52,418
	HDGM	6/28/2017	8.25	66.95	52,364

<b>Design</b>	Plan 2			
<b>Audit Notes:</b>				
<b>Version:</b>	<b>Phase:</b>	PLAN	<b>Tie On Depth:</b>	0.00
<b>Vertical Section:</b>	<b>Depth From (TVD) (ft)</b>	<b>+N/-S (ft)</b>	<b>+E/-W (ft)</b>	<b>Direction (°)</b>
	0.00	0.00	0.00	89.917

<b>Plan Sections</b>										
Measured Depth (ft)	Inclination (°)	Azimuth (°)	Vertical Depth (ft)	+N/-S (ft)	+E/-W (ft)	Dogleg Rate (°/100ft)	Build Rate (°/100ft)	Turn Rate (°/100ft)	TFO (°)	Target
0.00	0.00	0.000	0.00	0.00	0.00	0.00	0.00	0.00	0.00	
1,000.00	0.00	0.000	1,000.00	0.00	0.00	0.00	0.00	0.00	0.00	
2,064.54	21.29	207.879	2,040.21	-172.83	-91.43	2.00	2.00	0.00	207.88	
2,364.81	21.29	207.879	2,319.99	-269.20	-142.41	0.00	0.00	0.00	0.00	
4,493.88	0.00	0.000	4,400.40	-614.86	-325.27	1.00	-1.00	0.00	180.00	
5,845.04	0.00	0.000	5,751.56	-614.86	-325.27	0.00	0.00	0.00	0.00	
6,600.19	90.62	89.917	6,229.00	-614.16	157.34	12.00	12.00	11.91	89.92	
16,245.67	90.62	89.917	6,125.00	-600.19	9,802.25	0.00	0.00	0.00	0.00	4-62-28-1724C PBHI

<b>Database:</b>	Casper District	<b>Local Co-ordinate Reference:</b>	Well Anschutz Equus Farms 4-62-28-1724C
<b>Company:</b>	Bill Barrett Corp.	<b>TVD Reference:</b>	GL 4574' & KB 20' @ 4594.00ft
<b>Project:</b>	Weld County, CO NAD 83	<b>MD Reference:</b>	GL 4574' & KB 20' @ 4594.00ft
<b>Site:</b>	Anschutz Equus Farms 4-62-28_27 NWNW Pad	<b>North Reference:</b>	True
<b>Well:</b>	Anschutz Equus Farms 4-62-28-1724C	<b>Survey Calculation Method:</b>	Minimum Curvature
<b>Wellbore:</b>	OH		
<b>Design:</b>	Plan 2		

**Planned Survey**

Measured Depth (ft)	Inclination (°)	Azimuth (°)	Vertical Depth (ft)	+N/-S (ft)	+E/-W (ft)	Vertical Section (ft)	Dogleg Rate (°/100ft)	Build Rate (°/100ft)	Turn Rate (°/100ft)
0.00	0.00	0.000	0.00	0.00	0.00	0.00	0.00	0.00	0.00
100.00	0.00	0.000	100.00	0.00	0.00	0.00	0.00	0.00	0.00
200.00	0.00	0.000	200.00	0.00	0.00	0.00	0.00	0.00	0.00
300.00	0.00	0.000	300.00	0.00	0.00	0.00	0.00	0.00	0.00
400.00	0.00	0.000	400.00	0.00	0.00	0.00	0.00	0.00	0.00
500.00	0.00	0.000	500.00	0.00	0.00	0.00	0.00	0.00	0.00
600.00	0.00	0.000	600.00	0.00	0.00	0.00	0.00	0.00	0.00
700.00	0.00	0.000	700.00	0.00	0.00	0.00	0.00	0.00	0.00
800.00	0.00	0.000	800.00	0.00	0.00	0.00	0.00	0.00	0.00
900.00	0.00	0.000	900.00	0.00	0.00	0.00	0.00	0.00	0.00
1,000.00	0.00	0.000	1,000.00	0.00	0.00	0.00	0.00	0.00	0.00
<b>Start Build 2.00</b>									
1,100.00	2.00	207.879	1,099.98	-1.54	-0.82	-0.82	2.00	2.00	0.00
1,200.00	4.00	207.879	1,199.84	-6.17	-3.26	-3.27	2.00	2.00	0.00
1,300.00	6.00	207.879	1,299.45	-13.87	-7.34	-7.36	2.00	2.00	0.00
1,400.00	8.00	207.879	1,398.70	-24.64	-13.04	-13.07	2.00	2.00	0.00
1,500.00	10.00	207.879	1,497.47	-38.47	-20.35	-20.41	2.00	2.00	0.00
1,600.00	12.00	207.879	1,595.62	-55.34	-29.27	-29.35	2.00	2.00	0.00
1,700.00	14.00	207.879	1,693.06	-75.22	-39.79	-39.90	2.00	2.00	0.00
1,800.00	16.00	207.879	1,789.64	-98.10	-51.89	-52.04	2.00	2.00	0.00
1,900.00	18.00	207.879	1,885.27	-123.94	-65.57	-65.74	2.00	2.00	0.00
2,000.00	20.00	207.879	1,979.82	-152.72	-80.79	-81.01	2.00	2.00	0.00
2,064.54	21.29	207.879	2,040.21	-172.83	-91.43	-91.68	2.00	2.00	0.00
<b>Start 300.27 hold at 2064.54 MD</b>									
2,100.00	21.29	207.879	2,073.25	-184.21	-97.45	-97.72	0.00	0.00	0.00
2,200.00	21.29	207.879	2,166.42	-216.31	-114.43	-114.74	0.00	0.00	0.00
2,300.00	21.29	207.879	2,259.60	-248.40	-131.41	-131.77	0.00	0.00	0.00
2,364.81	21.29	207.879	2,319.99	-269.20	-142.41	-142.80	0.00	0.00	0.00
<b>Start Drop -1.00</b>									
2,400.00	20.94	207.879	2,352.81	-280.41	-148.34	-148.75	1.00	-1.00	0.00
2,500.00	19.94	207.879	2,446.52	-311.28	-164.67	-165.12	1.00	-1.00	0.00
2,600.00	18.94	207.879	2,540.82	-340.69	-180.23	-180.72	1.00	-1.00	0.00
2,700.00	17.94	207.879	2,635.68	-368.65	-195.02	-195.56	1.00	-1.00	0.00
2,800.00	16.94	207.879	2,731.08	-395.14	-209.04	-209.61	1.00	-1.00	0.00
2,900.00	15.94	207.879	2,826.99	-420.15	-222.27	-222.88	1.00	-1.00	0.00
3,000.00	14.94	207.879	2,923.38	-443.69	-234.72	-235.36	1.00	-1.00	0.00
3,100.00	13.94	207.879	3,020.22	-465.73	-246.38	-247.05	1.00	-1.00	0.00
3,200.00	12.94	207.879	3,117.48	-486.27	-257.24	-257.95	1.00	-1.00	0.00
3,300.00	11.94	207.879	3,215.14	-505.31	-267.32	-268.05	1.00	-1.00	0.00
3,400.00	10.94	207.879	3,313.15	-522.84	-276.59	-277.35	1.00	-1.00	0.00
3,500.00	9.94	207.879	3,411.49	-538.85	-285.06	-285.84	1.00	-1.00	0.00
3,600.00	8.94	207.879	3,510.14	-553.35	-292.73	-293.53	1.00	-1.00	0.00
3,700.00	7.94	207.879	3,609.05	-566.32	-299.59	-300.41	1.00	-1.00	0.00
3,800.00	6.94	207.879	3,708.21	-577.77	-305.65	-306.48	1.00	-1.00	0.00
3,900.00	5.94	207.879	3,807.58	-587.68	-310.89	-311.74	1.00	-1.00	0.00
4,000.00	4.94	207.879	3,907.13	-596.06	-315.32	-316.19	1.00	-1.00	0.00
4,100.00	3.94	207.879	4,006.83	-602.90	-318.94	-319.81	1.00	-1.00	0.00
4,200.00	2.94	207.879	4,106.64	-608.20	-321.75	-322.63	1.00	-1.00	0.00
4,300.00	1.94	207.879	4,206.55	-611.96	-323.74	-324.62	1.00	-1.00	0.00
4,400.00	0.94	207.879	4,306.52	-614.18	-324.91	-325.80	1.00	-1.00	0.00
4,493.88	0.00	0.000	4,400.40	-614.86	-325.27	-326.16	1.00	-1.00	0.00
<b>Start 1351.16 hold at 4493.88 MD</b>									
4,500.00	0.00	0.000	4,406.52	-614.86	-325.27	-326.16	0.00	0.00	0.00

<b>Database:</b>	Casper District	<b>Local Co-ordinate Reference:</b>	Well Anschutz Equus Farms 4-62-28-1724C
<b>Company:</b>	Bill Barrett Corp.	<b>TVD Reference:</b>	GL 4574' & KB 20' @ 4594.00ft
<b>Project:</b>	Weld County, CO NAD 83	<b>MD Reference:</b>	GL 4574' & KB 20' @ 4594.00ft
<b>Site:</b>	Anschutz Equus Farms 4-62-28_27 NWNW Pad	<b>North Reference:</b>	True
<b>Well:</b>	Anschutz Equus Farms 4-62-28-1724C	<b>Survey Calculation Method:</b>	Minimum Curvature
<b>Wellbore:</b>	OH		
<b>Design:</b>	Plan 2		

**Planned Survey**

Measured Depth (ft)	Inclination (°)	Azimuth (°)	Vertical Depth (ft)	+N/-S (ft)	+E/-W (ft)	Vertical Section (ft)	Dogleg Rate (°/100ft)	Build Rate (°/100ft)	Turn Rate (°/100ft)
4,600.00	0.00	0.000	4,506.52	-614.86	-325.27	-326.16	0.00	0.00	0.00
4,700.00	0.00	0.000	4,606.52	-614.86	-325.27	-326.16	0.00	0.00	0.00
4,800.00	0.00	0.000	4,706.52	-614.86	-325.27	-326.16	0.00	0.00	0.00
4,900.00	0.00	0.000	4,806.52	-614.86	-325.27	-326.16	0.00	0.00	0.00
5,000.00	0.00	0.000	4,906.52	-614.86	-325.27	-326.16	0.00	0.00	0.00
5,100.00	0.00	0.000	5,006.52	-614.86	-325.27	-326.16	0.00	0.00	0.00
5,200.00	0.00	0.000	5,106.52	-614.86	-325.27	-326.16	0.00	0.00	0.00
5,300.00	0.00	0.000	5,206.52	-614.86	-325.27	-326.16	0.00	0.00	0.00
5,400.00	0.00	0.000	5,306.52	-614.86	-325.27	-326.16	0.00	0.00	0.00
5,500.00	0.00	0.000	5,406.52	-614.86	-325.27	-326.16	0.00	0.00	0.00
5,600.00	0.00	0.000	5,506.52	-614.86	-325.27	-326.16	0.00	0.00	0.00
5,700.00	0.00	0.000	5,606.52	-614.86	-325.27	-326.16	0.00	0.00	0.00
5,800.00	0.00	0.000	5,706.52	-614.86	-325.27	-326.16	0.00	0.00	0.00
5,845.04	0.00	0.000	5,751.56	-614.86	-325.27	-326.16	0.00	0.00	0.00
<b>Start DLS 12.00 TFO 89.92</b>									
5,900.00	6.59	89.917	5,806.39	-614.86	-322.11	-323.00	12.00	12.00	0.00
6,000.00	18.59	89.917	5,903.81	-614.82	-300.35	-301.24	12.00	12.00	0.00
6,100.00	30.59	89.917	5,994.57	-614.76	-258.80	-259.69	12.00	12.00	0.00
6,200.00	42.59	89.917	6,074.71	-614.68	-199.30	-200.19	12.00	12.00	0.00
6,300.00	54.59	89.917	6,140.73	-614.57	-124.43	-125.32	12.00	12.00	0.00
6,400.00	66.59	89.917	6,189.74	-614.44	-37.47	-38.36	12.00	12.00	0.00
6,500.00	78.59	89.917	6,219.60	-614.31	57.78	56.89	12.00	12.00	0.00
6,600.00	90.59	89.917	6,229.00	-614.16	157.15	156.26	12.00	12.00	0.00
6,600.19	90.62	89.917	6,229.00	-614.16	157.34	156.45	12.00	12.00	0.00
<b>Start 9645.48 hold at 6600.19 MD</b>									
6,700.00	90.62	89.917	6,227.92	-614.02	257.14	256.25	0.00	0.00	0.00
6,800.00	90.62	89.917	6,226.84	-613.87	357.14	356.25	0.00	0.00	0.00
6,900.00	90.62	89.917	6,225.76	-613.73	457.13	456.24	0.00	0.00	0.00
7,000.00	90.62	89.917	6,224.69	-613.58	557.13	556.24	0.00	0.00	0.00
7,100.00	90.62	89.917	6,223.61	-613.44	657.12	656.23	0.00	0.00	0.00
7,200.00	90.62	89.917	6,222.53	-613.29	757.11	756.22	0.00	0.00	0.00
7,300.00	90.62	89.917	6,221.45	-613.15	857.11	856.22	0.00	0.00	0.00
7,400.00	90.62	89.917	6,220.37	-613.00	957.10	956.21	0.00	0.00	0.00
7,500.00	90.62	89.917	6,219.30	-612.86	1,057.10	1,056.21	0.00	0.00	0.00
7,600.00	90.62	89.917	6,218.22	-612.71	1,157.09	1,156.20	0.00	0.00	0.00
7,700.00	90.62	89.917	6,217.14	-612.57	1,257.08	1,256.20	0.00	0.00	0.00
7,800.00	90.62	89.917	6,216.06	-612.42	1,357.08	1,356.19	0.00	0.00	0.00
7,900.00	90.62	89.917	6,214.98	-612.28	1,457.07	1,456.18	0.00	0.00	0.00
8,000.00	90.62	89.917	6,213.90	-612.13	1,557.07	1,556.18	0.00	0.00	0.00
8,100.00	90.62	89.917	6,212.83	-611.99	1,657.06	1,656.17	0.00	0.00	0.00
8,200.00	90.62	89.917	6,211.75	-611.84	1,757.06	1,756.17	0.00	0.00	0.00
8,300.00	90.62	89.917	6,210.67	-611.70	1,857.05	1,856.16	0.00	0.00	0.00
8,400.00	90.62	89.917	6,209.59	-611.55	1,957.04	1,956.16	0.00	0.00	0.00
8,500.00	90.62	89.917	6,208.51	-611.41	2,057.04	2,056.15	0.00	0.00	0.00
8,600.00	90.62	89.917	6,207.44	-611.26	2,157.03	2,156.14	0.00	0.00	0.00
8,700.00	90.62	89.917	6,206.36	-611.12	2,257.03	2,256.14	0.00	0.00	0.00
8,800.00	90.62	89.917	6,205.28	-610.97	2,357.02	2,356.13	0.00	0.00	0.00
8,900.00	90.62	89.917	6,204.20	-610.83	2,457.01	2,456.13	0.00	0.00	0.00
9,000.00	90.62	89.917	6,203.12	-610.69	2,557.01	2,556.12	0.00	0.00	0.00
9,100.00	90.62	89.917	6,202.04	-610.54	2,657.00	2,656.11	0.00	0.00	0.00
9,200.00	90.62	89.917	6,200.97	-610.40	2,757.00	2,756.11	0.00	0.00	0.00
9,300.00	90.62	89.917	6,199.89	-610.25	2,856.99	2,856.10	0.00	0.00	0.00
9,400.00	90.62	89.917	6,198.81	-610.11	2,956.98	2,956.10	0.00	0.00	0.00

<b>Database:</b>	Casper District	<b>Local Co-ordinate Reference:</b>	Well Anschutz Equus Farms 4-62-28-1724C
<b>Company:</b>	Bill Barrett Corp.	<b>TVD Reference:</b>	GL 4574' & KB 20' @ 4594.00ft
<b>Project:</b>	Weld County, CO NAD 83	<b>MD Reference:</b>	GL 4574' & KB 20' @ 4594.00ft
<b>Site:</b>	Anschutz Equus Farms 4-62-28_27 NWNW Pad	<b>North Reference:</b>	True
<b>Well:</b>	Anschutz Equus Farms 4-62-28-1724C	<b>Survey Calculation Method:</b>	Minimum Curvature
<b>Wellbore:</b>	OH		
<b>Design:</b>	Plan 2		

Planned Survey									
Measured Depth (ft)	Inclination (°)	Azimuth (°)	Vertical Depth (ft)	+N/-S (ft)	+E/-W (ft)	Vertical Section (ft)	Dogleg Rate (°/100ft)	Build Rate (°/100ft)	Turn Rate (°/100ft)
9,500.00	90.62	89.917	6,197.73	-609.96	3,056.98	3,056.09	0.00	0.00	0.00
9,600.00	90.62	89.917	6,196.65	-609.82	3,156.97	3,156.09	0.00	0.00	0.00
9,700.00	90.62	89.917	6,195.58	-609.67	3,256.97	3,256.08	0.00	0.00	0.00
9,800.00	90.62	89.917	6,194.50	-609.53	3,356.96	3,356.07	0.00	0.00	0.00
9,900.00	90.62	89.917	6,193.42	-609.38	3,456.95	3,456.07	0.00	0.00	0.00
10,000.00	90.62	89.917	6,192.34	-609.24	3,556.95	3,556.06	0.00	0.00	0.00
10,100.00	90.62	89.917	6,191.26	-609.09	3,656.94	3,656.06	0.00	0.00	0.00
10,200.00	90.62	89.917	6,190.18	-608.95	3,756.94	3,756.05	0.00	0.00	0.00
10,300.00	90.62	89.917	6,189.11	-608.80	3,856.93	3,856.04	0.00	0.00	0.00
10,400.00	90.62	89.917	6,188.03	-608.66	3,956.92	3,956.04	0.00	0.00	0.00
10,500.00	90.62	89.917	6,186.95	-608.51	4,056.92	4,056.03	0.00	0.00	0.00
10,600.00	90.62	89.917	6,185.87	-608.37	4,156.91	4,156.03	0.00	0.00	0.00
10,700.00	90.62	89.917	6,184.79	-608.22	4,256.91	4,256.02	0.00	0.00	0.00
10,800.00	90.62	89.917	6,183.72	-608.08	4,356.90	4,356.02	0.00	0.00	0.00
10,900.00	90.62	89.917	6,182.64	-607.93	4,456.90	4,456.01	0.00	0.00	0.00
11,000.00	90.62	89.917	6,181.56	-607.79	4,556.89	4,556.00	0.00	0.00	0.00
11,100.00	90.62	89.917	6,180.48	-607.64	4,656.88	4,656.00	0.00	0.00	0.00
11,200.00	90.62	89.917	6,179.40	-607.50	4,756.88	4,755.99	0.00	0.00	0.00
11,300.00	90.62	89.917	6,178.32	-607.35	4,856.87	4,855.99	0.00	0.00	0.00
11,400.00	90.62	89.917	6,177.25	-607.21	4,956.87	4,955.98	0.00	0.00	0.00
11,500.00	90.62	89.917	6,176.17	-607.06	5,056.86	5,055.98	0.00	0.00	0.00
11,600.00	90.62	89.917	6,175.09	-606.92	5,156.85	5,155.97	0.00	0.00	0.00
11,700.00	90.62	89.917	6,174.01	-606.77	5,256.85	5,255.96	0.00	0.00	0.00
11,800.00	90.62	89.917	6,172.93	-606.63	5,356.84	5,355.96	0.00	0.00	0.00
11,900.00	90.62	89.917	6,171.85	-606.49	5,456.84	5,455.95	0.00	0.00	0.00
12,000.00	90.62	89.917	6,170.78	-606.34	5,556.83	5,555.95	0.00	0.00	0.00
12,100.00	90.62	89.917	6,169.70	-606.20	5,656.82	5,655.94	0.00	0.00	0.00
12,200.00	90.62	89.917	6,168.62	-606.05	5,756.82	5,755.93	0.00	0.00	0.00
12,300.00	90.62	89.917	6,167.54	-605.91	5,856.81	5,855.93	0.00	0.00	0.00
12,400.00	90.62	89.917	6,166.46	-605.76	5,956.81	5,955.92	0.00	0.00	0.00
12,500.00	90.62	89.917	6,165.39	-605.62	6,056.80	6,055.92	0.00	0.00	0.00
12,600.00	90.62	89.917	6,164.31	-605.47	6,156.79	6,155.91	0.00	0.00	0.00
12,700.00	90.62	89.917	6,163.23	-605.33	6,256.79	6,255.91	0.00	0.00	0.00
12,800.00	90.62	89.917	6,162.15	-605.18	6,356.78	6,355.90	0.00	0.00	0.00
12,900.00	90.62	89.917	6,161.07	-605.04	6,456.78	6,455.89	0.00	0.00	0.00
13,000.00	90.62	89.917	6,159.99	-604.89	6,556.77	6,555.89	0.00	0.00	0.00
13,100.00	90.62	89.917	6,158.92	-604.75	6,656.77	6,655.88	0.00	0.00	0.00
13,200.00	90.62	89.917	6,157.84	-604.60	6,756.76	6,755.88	0.00	0.00	0.00
13,300.00	90.62	89.917	6,156.76	-604.46	6,856.75	6,855.87	0.00	0.00	0.00
13,400.00	90.62	89.917	6,155.68	-604.31	6,956.75	6,955.86	0.00	0.00	0.00
13,500.00	90.62	89.917	6,154.60	-604.17	7,056.74	7,055.86	0.00	0.00	0.00
13,600.00	90.62	89.917	6,153.53	-604.02	7,156.74	7,155.85	0.00	0.00	0.00
13,700.00	90.62	89.917	6,152.45	-603.88	7,256.73	7,255.85	0.00	0.00	0.00
13,800.00	90.62	89.917	6,151.37	-603.73	7,356.72	7,355.84	0.00	0.00	0.00
13,900.00	90.62	89.917	6,150.29	-603.59	7,456.72	7,455.84	0.00	0.00	0.00
14,000.00	90.62	89.917	6,149.21	-603.44	7,556.71	7,555.83	0.00	0.00	0.00
14,100.00	90.62	89.917	6,148.13	-603.30	7,656.71	7,655.82	0.00	0.00	0.00
14,200.00	90.62	89.917	6,147.06	-603.15	7,756.70	7,755.82	0.00	0.00	0.00
14,300.00	90.62	89.917	6,145.98	-603.01	7,856.69	7,855.81	0.00	0.00	0.00
14,400.00	90.62	89.917	6,144.90	-602.86	7,956.69	7,955.81	0.00	0.00	0.00
14,500.00	90.62	89.917	6,143.82	-602.72	8,056.68	8,055.80	0.00	0.00	0.00
14,600.00	90.62	89.917	6,142.74	-602.57	8,156.68	8,155.79	0.00	0.00	0.00
14,700.00	90.62	89.917	6,141.67	-602.43	8,256.67	8,255.79	0.00	0.00	0.00

<b>Database:</b>	Casper District	<b>Local Co-ordinate Reference:</b>	Well Anschutz Equus Farms 4-62-28-1724C
<b>Company:</b>	Bill Barrett Corp.	<b>TVD Reference:</b>	GL 4574' & KB 20' @ 4594.00ft
<b>Project:</b>	Weld County, CO NAD 83	<b>MD Reference:</b>	GL 4574' & KB 20' @ 4594.00ft
<b>Site:</b>	Anschutz Equus Farms 4-62-28_27 NWNW Pad	<b>North Reference:</b>	True
<b>Well:</b>	Anschutz Equus Farms 4-62-28-1724C	<b>Survey Calculation Method:</b>	Minimum Curvature
<b>Wellbore:</b>	OH		
<b>Design:</b>	Plan 2		

Planned Survey										
Measured Depth (ft)	Inclination (°)	Azimuth (°)	Vertical Depth (ft)	+N/-S (ft)	+E/-W (ft)	Vertical Section (ft)	Dogleg Rate (°/100ft)	Build Rate (°/100ft)	Turn Rate (°/100ft)	
14,800.00	90.62	89.917	6,140.59	-602.28	8,356.66	8,355.78	0.00	0.00	0.00	
14,900.00	90.62	89.917	6,139.51	-602.14	8,456.66	8,455.78	0.00	0.00	0.00	
15,000.00	90.62	89.917	6,138.43	-602.00	8,556.65	8,555.77	0.00	0.00	0.00	
15,100.00	90.62	89.917	6,137.35	-601.85	8,656.65	8,655.77	0.00	0.00	0.00	
15,200.00	90.62	89.917	6,136.27	-601.71	8,756.64	8,755.76	0.00	0.00	0.00	
15,300.00	90.62	89.917	6,135.20	-601.56	8,856.64	8,855.75	0.00	0.00	0.00	
15,400.00	90.62	89.917	6,134.12	-601.42	8,956.63	8,955.75	0.00	0.00	0.00	
15,500.00	90.62	89.917	6,133.04	-601.27	9,056.62	9,055.74	0.00	0.00	0.00	
15,600.00	90.62	89.917	6,131.96	-601.13	9,156.62	9,155.74	0.00	0.00	0.00	
15,700.00	90.62	89.917	6,130.88	-600.98	9,256.61	9,255.73	0.00	0.00	0.00	
15,800.00	90.62	89.917	6,129.81	-600.84	9,356.61	9,355.73	0.00	0.00	0.00	
15,900.00	90.62	89.917	6,128.73	-600.69	9,456.60	9,455.72	0.00	0.00	0.00	
16,000.00	90.62	89.917	6,127.65	-600.55	9,556.59	9,555.71	0.00	0.00	0.00	
16,100.00	90.62	89.917	6,126.57	-600.40	9,656.59	9,655.71	0.00	0.00	0.00	
16,200.00	90.62	89.917	6,125.49	-600.26	9,756.58	9,755.70	0.00	0.00	0.00	
16,245.67	90.62	89.917	6,125.00	-600.19	9,802.25	9,801.37	0.00	0.00	0.00	
TD at 16245.67										

Design Targets										
Target Name	Dip Angle (°)	Dip Dir. (°)	TVD (ft)	+N/-S (ft)	+E/-W (ft)	Northing (usft)	Easting (usft)	Latitude	Longitude	
- hit/miss target										
- Shape										
4-62-28-1724C PBHL	0.00	0.000	6,125.00	-600.19	9,802.25	1,349,190.38	3,334,133.14	40° 17' 8.639 N	104° 18' 8.161 W	
- plan hits target center										
- Point										
4-62-28-1724C LP	0.00	0.000	6,229.00	-614.15	157.34	1,349,049.97	3,324,489.26	40° 17' 8.520 N	104° 20' 12.620 W	
- plan misses target center by 0.01ft at 6600.20ft MD (6229.00 TVD, -614.16 N, 157.34 E)										
- Point										

Plan Annotations					
Measured Depth (ft)	Vertical Depth (ft)	Local Coordinates			
		+N/-S (ft)	+E/-W (ft)	Comment	
1,000.00	1,000.00	0.00	0.00	Start Build 2.00	
2,064.54	2,040.21	-172.83	-91.43	Start 300.27 hold at 2064.54 MD	
2,364.81	2,319.99	-269.20	-142.41	Start Drop -1.00	
4,493.88	4,400.40	-614.86	-325.27	Start 1351.16 hold at 4493.88 MD	
5,845.04	5,751.56	-614.86	-325.27	Start DLS 12.00 TFO 89.92	
6,600.19	6,229.00	-614.16	157.34	Start 9645.48 hold at 6600.19 MD	
16,245.67	6,125.00	-600.19	9,802.25	TD at 16245.67	