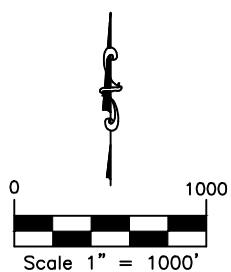
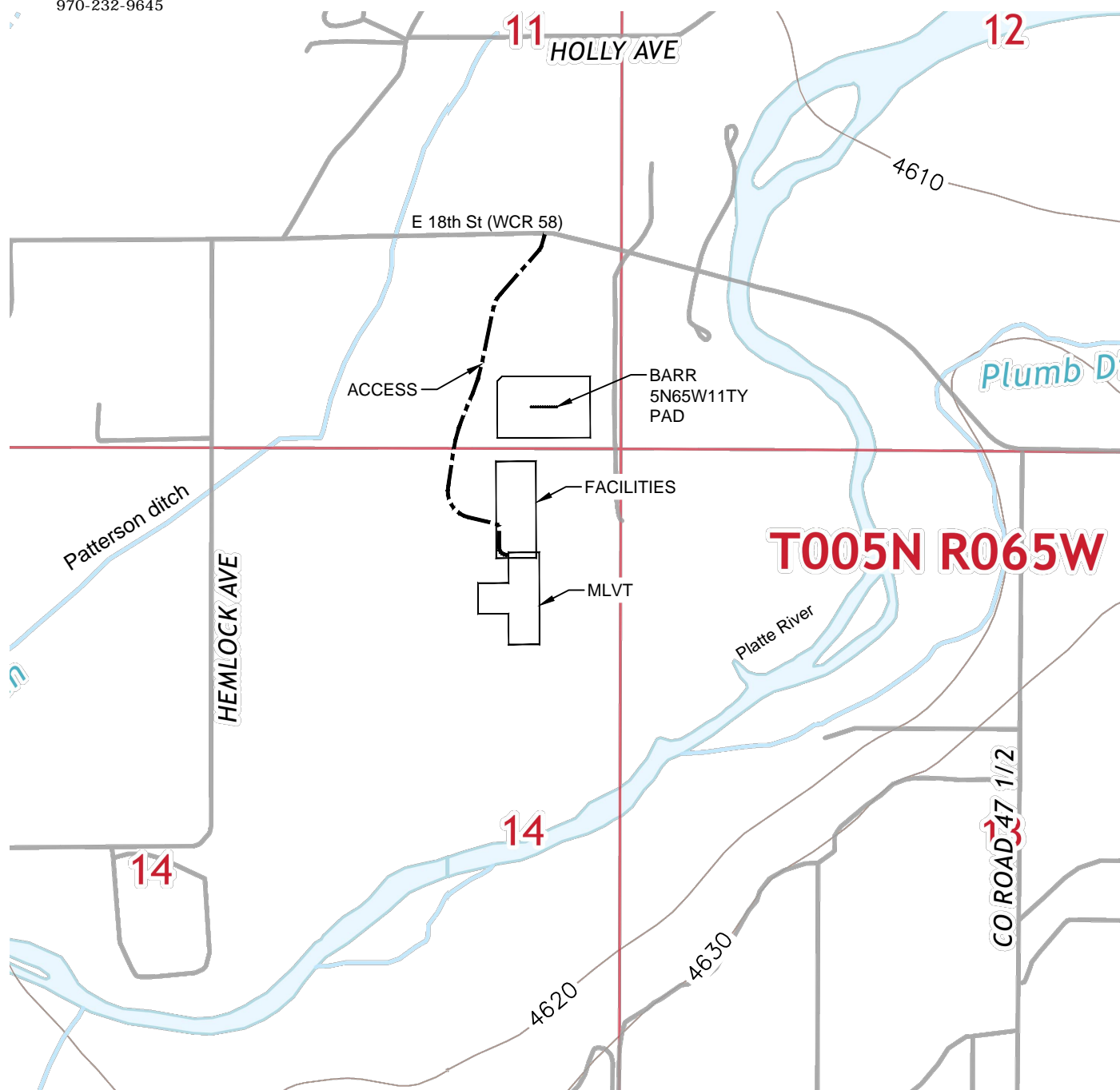




Washburn Land Surveying
www.WashburnSurveying.com
970-232-9645

ACCESS MAP BARR 5N65W11TY PAD

SECTION: 11
TOWNSHIP: 5N
RANGE: 65W
6TH P.M.
WELD COUNTY, CO

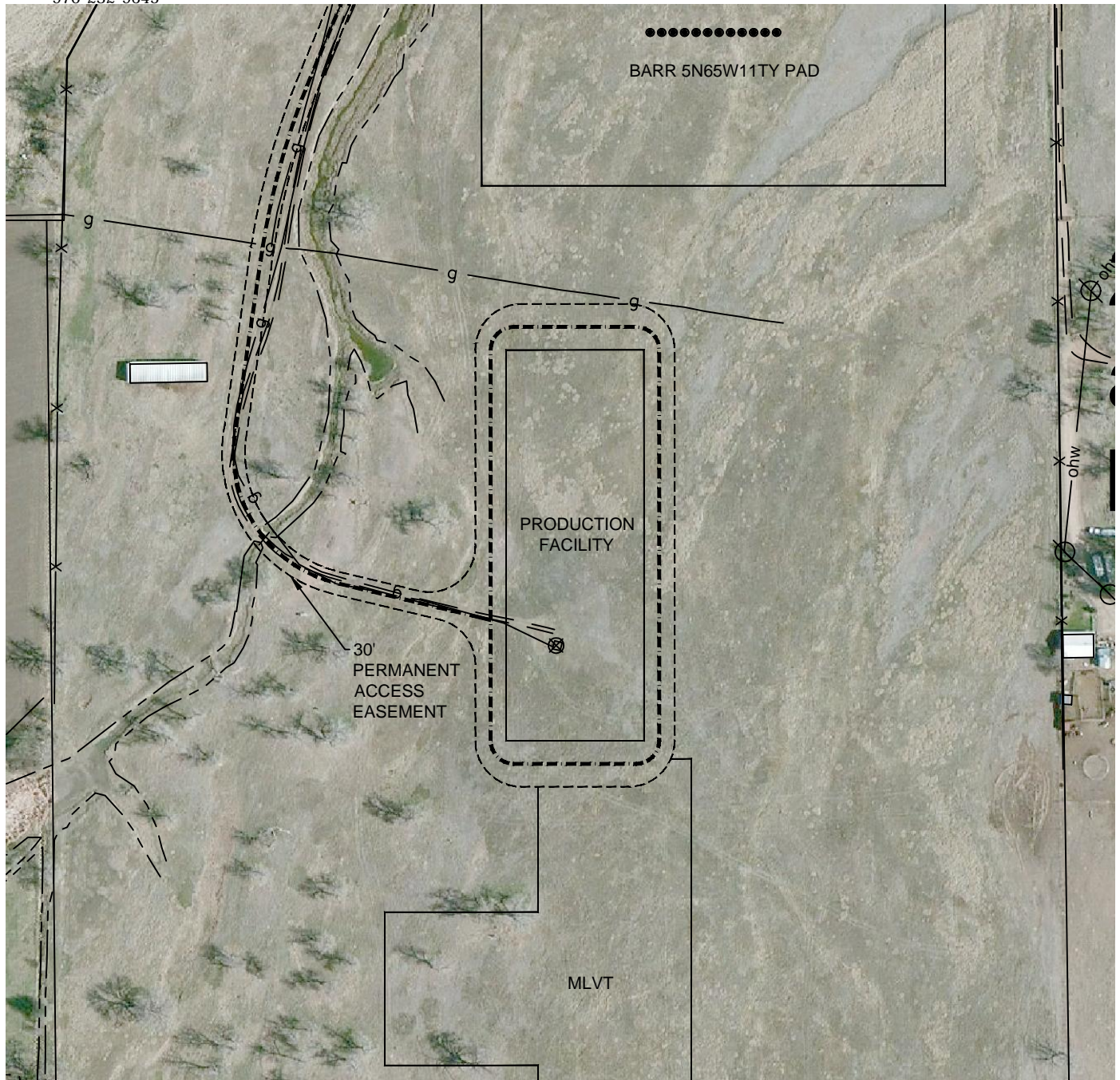




Washburn Land Surveying
www.WashburnSurveying.com
970-232-9645

ACCESS MAP BARR 5N65W11TY PAD

SECTION: 11
TOWNSHIP: 5N
RANGE: 65W
6TH P.M.
WELD COUNTY, CO



DIRECTIONS:

FROM THE INTERSECTION OF EAST 18TH STREET AND HEMLOCK AVENUE, THENCE EAST ON EAST 18TH STREET FOR 2200 FEET TO AN ACCESS TO THE SOUTH, THENCE SOUTHERLY FOR 2268 FEET TO THE PRODUCTION FACILITY OF THE PROPOSED WELL PAD.

