

WELL LOCATION CERTIFICATE

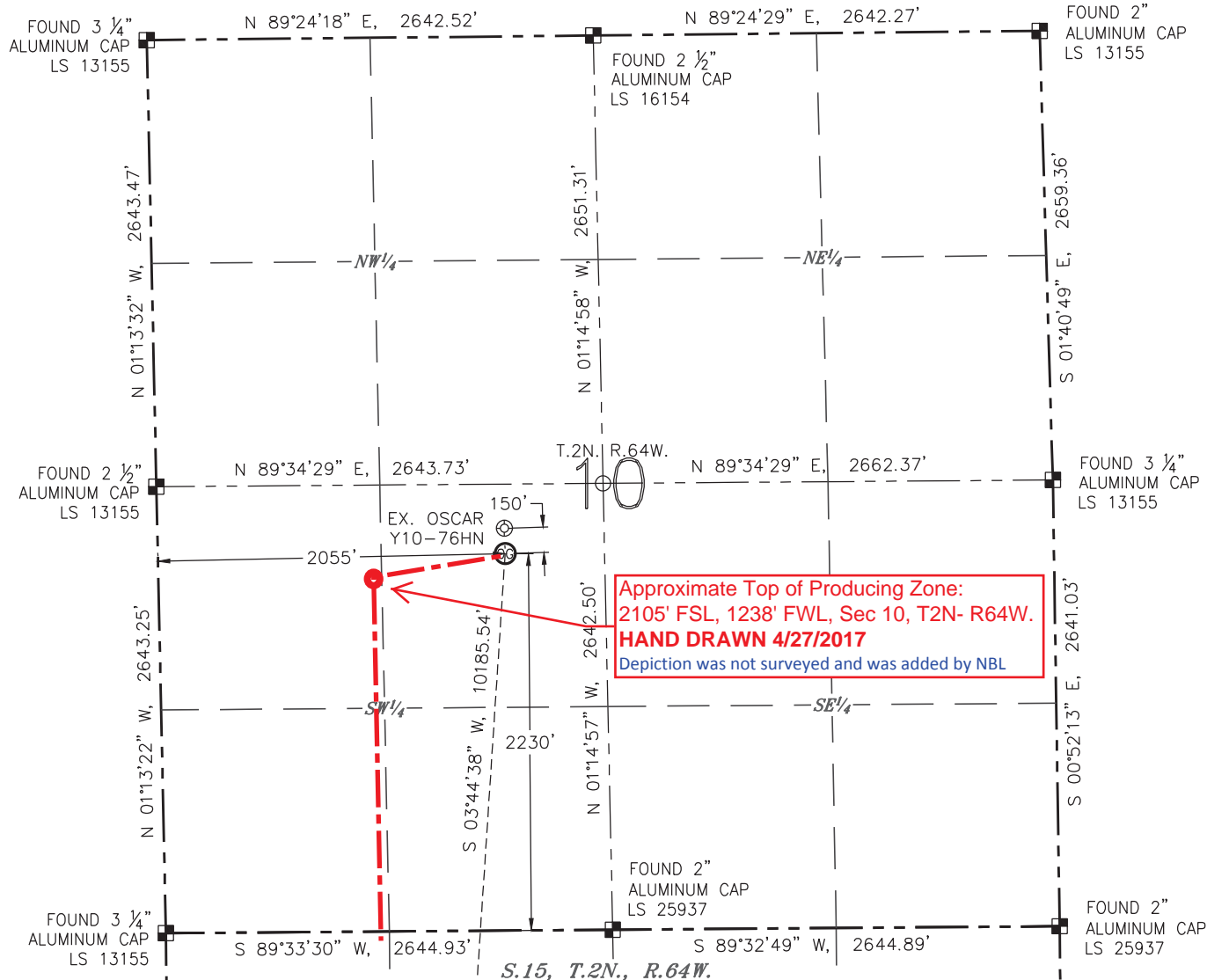
BISON RIDGE Y22-771

(SHEET 1 OF 3)

SECTION: 10

TOWNSHIP: 2N

RANGE: 64W



NOTES:

1. BEARINGS ARE GRID BEARINGS OF THE COLORADO STATE PLANE COORDINATE SYSTEM, NORTH ZONE, NAD 83. THE LINEAL DIMENSIONS SHOWN HEREON ARE BASED UPON THE "U.S. SURVEY FOOT".
2. GROUND ELEVATIONS ARE BASED UPON NGS OPUS SOLUTION NAVD 88 DATUM COMPUTED USING GEOID09.
3. IMPROVEMENTS: SEE LOCATION DRAWING FOR ALL VISIBLE IMPROVEMENTS WITHIN 500' OF THE DISTURBED AREA.
4. SURFACE USE: PASTURE.
5. INSTRUMENT OPERATOR: FLORIAN DUERSELEN.
6. THE NEAREST EXISTING WELL: OSCAR Y10-76HN, 150' N.

IN ACCORDANCE WITH A REQUEST FROM TYLER BEAVERS WITH NOBLE ENERGY INC., R&R ENGINEERS-SURVEYORS, INC. HAS DETERMINED THE SURFACE HOLE LOCATION OF THE BISON RIDGE Y22-771 WELL TO BE 2230' FROM THE SOUTH LINE AND 2055' FROM THE WEST LINE AS MEASURED AT RIGHT ANGLES FROM THE SECTION LINES OF SECTION 10, TOWNSHIP 2 NORTH, RANGE 64 WEST, AND THE BOTTOM HOLE LOCATION TO BE 2640' FROM THE SOUTH LINE AND 1233' FROM THE WEST LINE AS MEASURED AT RIGHT ANGLES FROM THE SECTION LINES OF SECTION 22, TOWNSHIP 2 NORTH, RANGE 64 WEST OF THE 6TH PRINCIPAL MERIDIAN, WELD COUNTY, COLORADO.

I HEREBY CERTIFY THAT THIS WELL LOCATION CERTIFICATE WAS PREPARED BY ME, OR UNDER MY DIRECT SUPERVISION, THAT THE FIELD WORK WAS COMPLETED ON 02/07/17, FOR AND ON BEHALF OF NOBLE ENERGY INC., THAT IT IS NOT A LAND SURVEY PLAT OR AN IMPROVEMENT SURVEY PLAT, AND THAT IT IS NOT TO BE RELIED UPON FOR ESTABLISHMENT OF FENCES, BUILDINGS, OR OTHER FUTURE IMPROVEMENT LINES.

SURFACE HOLE LOCATION

LATITUDE: N 40.15183°
 LONGITUDE: W 104.53971°
 PDOP: 1.7
 ELEVATION: 4931'
 ¼-¼: NE¼SW¼

BOTTOM HOLE LOCATION

LATITUDE: N 40.12395°
 LONGITUDE: W 104.54248°

LEGEND

- ⊗ PROPOSED WELL
- ⊙ EXISTING WELL
- ⊕ BOTTOM HOLE
- ⊞ FOUND MONUMENT
- CALCULATED POSITION



0 1000'
 SCALE: 1" = 1000'



MEASURED FROM THE	BUILDING	BUILDING UNIT	HIGH OCCUPANCY BUILDING UNIT	DESIGNATED OUTSIDE ACTIVITY AREA	PUBLIC ROAD	ABOVEGROUND UTILITY	RAILROAD	PROPERTY LINE
PROPOSED WELLHEAD	2567' SW	3221' SE	5280'+	5280'+	3012' SW (CR 55)	1976' W	5280'+	2055' W

ANTONIO W. SMITH, PLS 38320
 FOR AND ON BEHALF OF R&R
 ENGINEERS-SURVEYORS, INC.

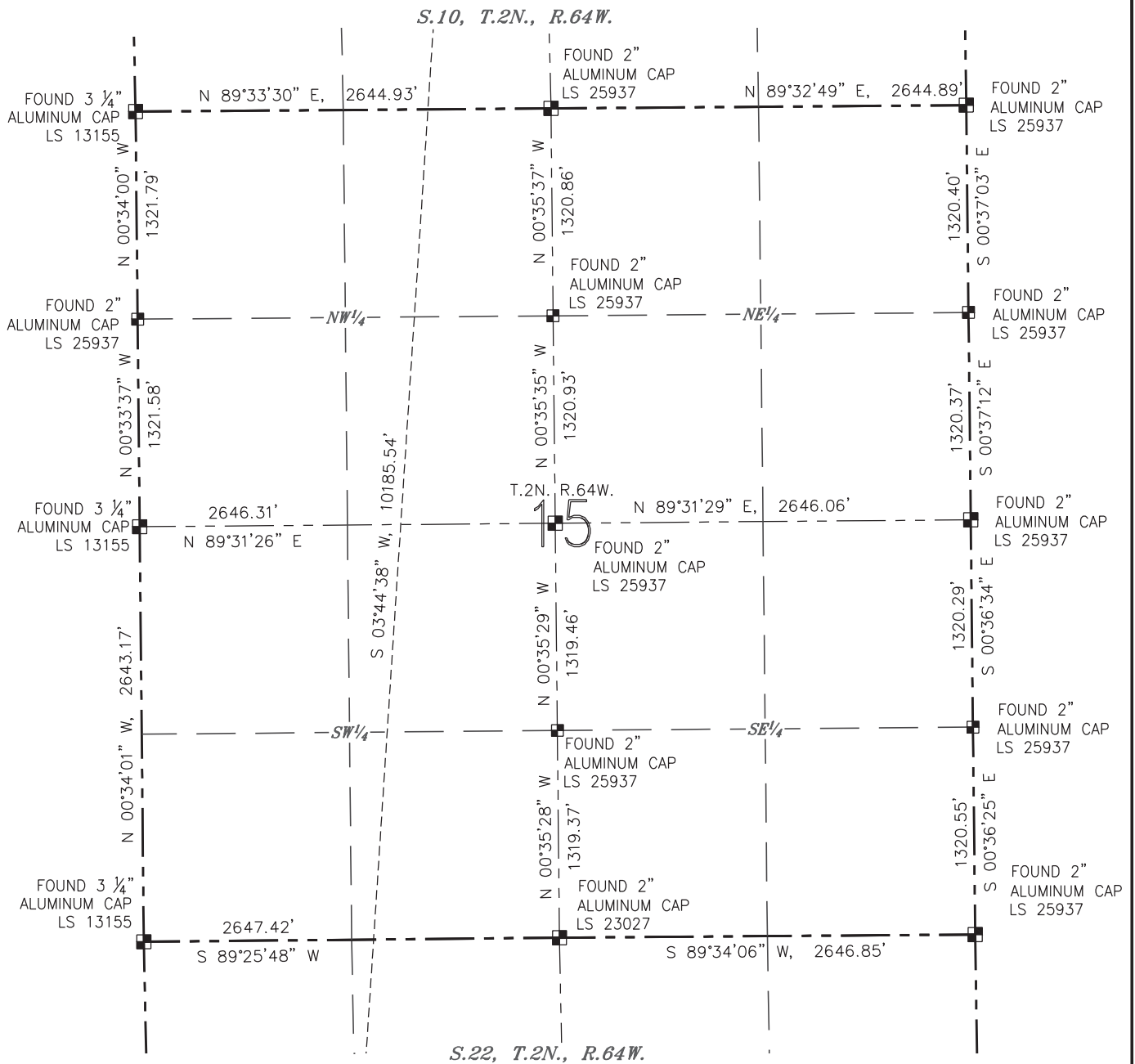
DATE: 02/10/2017
 JOB #: NE16303

WELL LOCATION CERTIFICATE






BISON RIDGE Y22-771

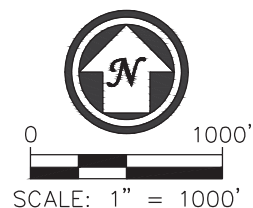
(SHEET 2 OF 3)

SECTION: 10
TOWNSHIP: 2N
RANGE: 64W



LEGEND

-  PROPOSED WELL
 EXISTING WELL
 BOTTOM HOLE
 FOUND MONUMENT
 CALCULATED POSITION

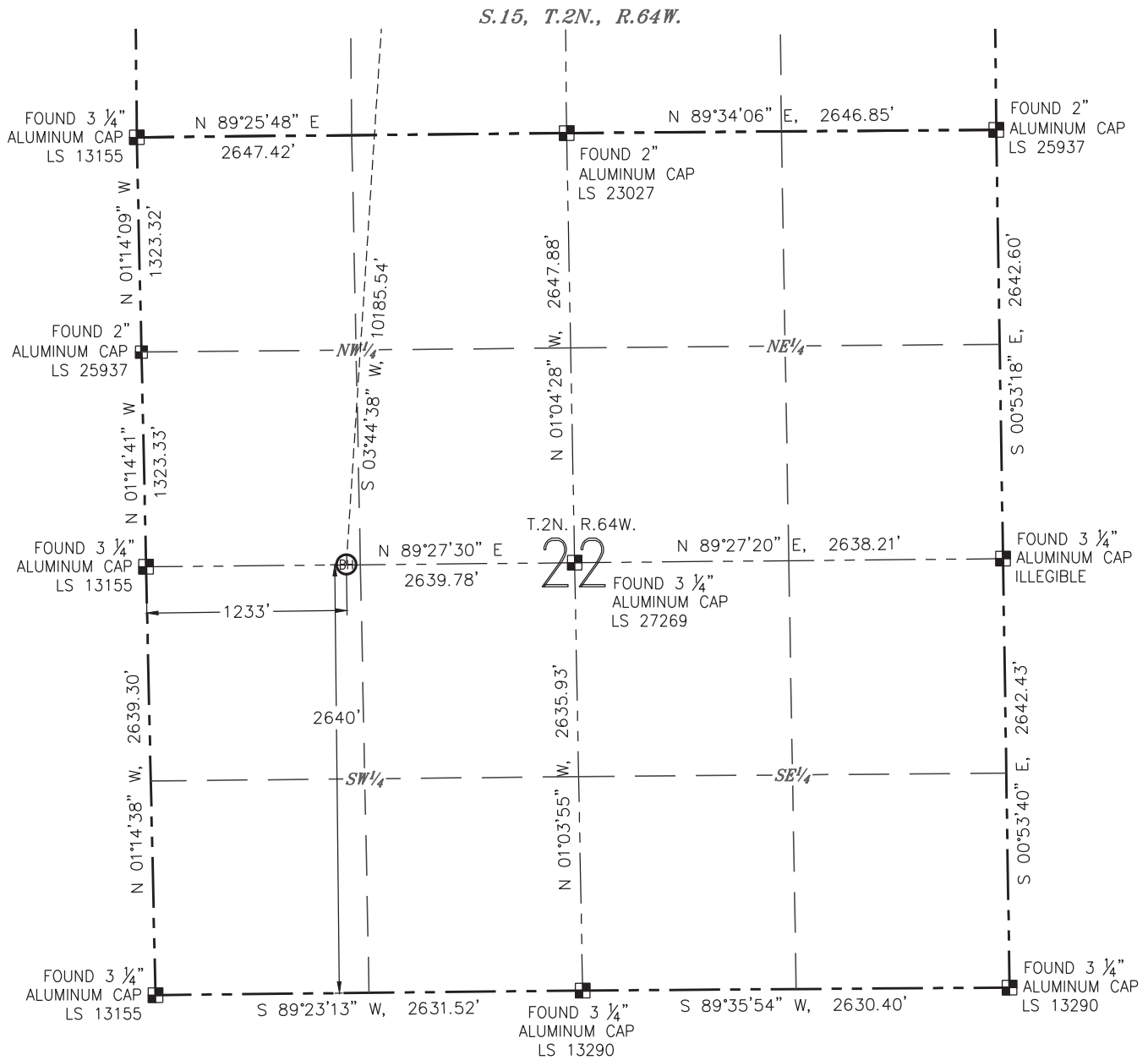


DATE: 02/10/2017
JOB #: NE16303

WELL LOCATION CERTIFICATE

BISON RIDGE Y22-771

(SHEET 3 OF 3)

SECTION: 10
TOWNSHIP: 2N
RANGE: 64W

LEGEND

- ⊗ PROPOSED WELL
- ⊙ EXISTING WELL
- ⊕ BOTTOM HOLE
- ⊠ FOUND MONUMENT
- CALCULATED POSITION

