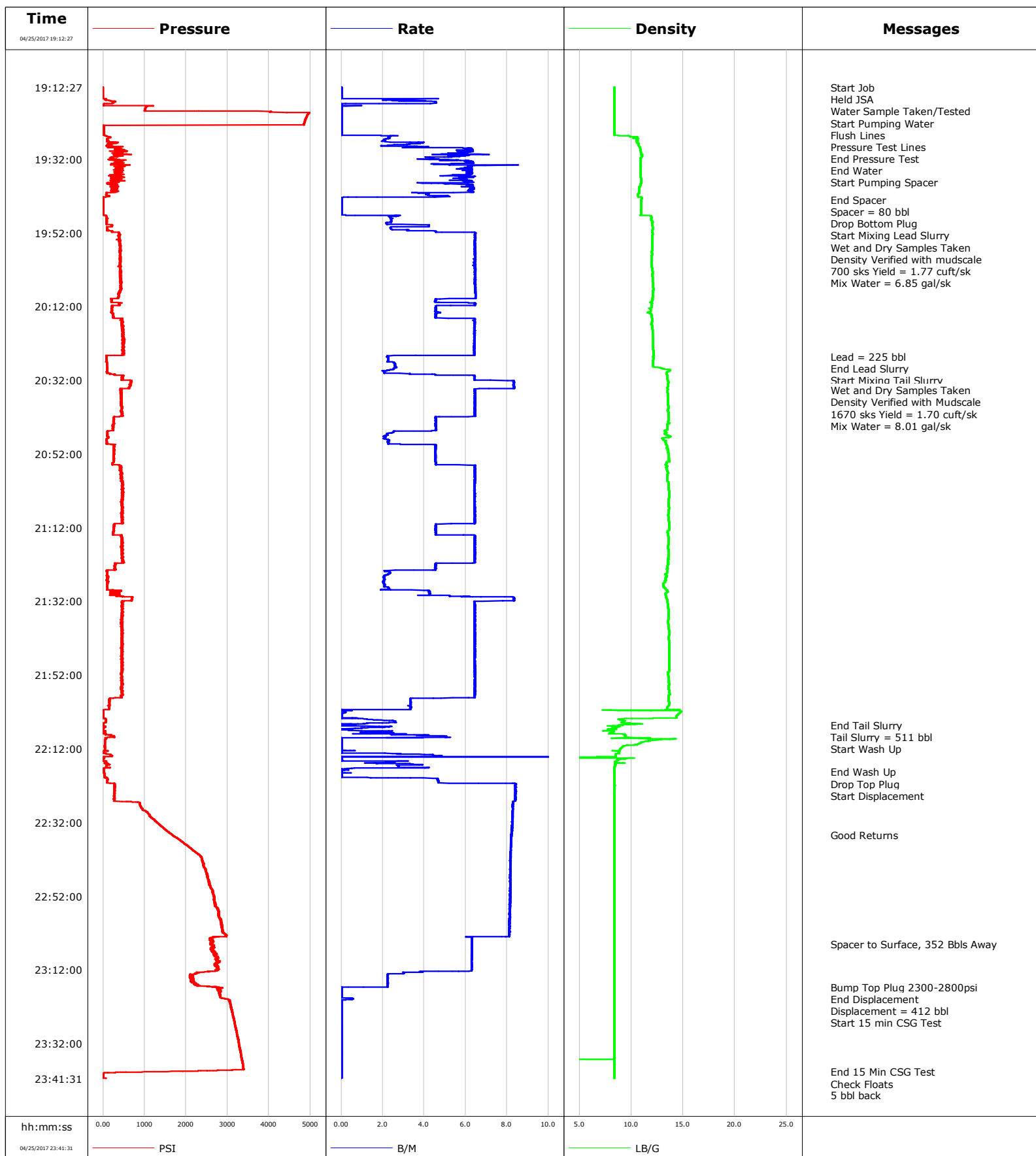


Well Chica4N2-23HZ
Field Wattenberg
Engineer Ryan Call
Country United States

Client Anadarko
SIR No. D5VO-01993
Job Type 5.5" Production
Job Date 04-25-2017



Cementing Service Report

				Customer Anadarko				Job Number D5VO-01993			
Well Chica4N2-23HZ			Location (legal) P461			Schlumberger Location CWY			Job Start Apr/25/2017		
Field Wattenberg		Formation Name/Type		Deviation deg		Bit Size 8.5 in		Well MD 17846.0 ft		Well TVD 7207.3 ft	
County Weld		State/Province Colorado		BHP psi		BHST 226 degF		BHCT 225 degF		Pore Press. Gradient lb/gal	
Well Master 0631711728		API/UWI 05123441210000									
Rig Name Precision 461		Drilled For Oil & Gas		Service Via Land		Casing/ Liner					
						Depth, ft		Size, in		Weight, lb/ft	
										Grade	
										Thread	
Offshore Zone		Well Class New		Well Type Development		2368.0		9.6		36.0	
						17846.0		5.5		17.0	
										J-55	
										8 RD	
										HCP-110	
										8 RD	
Drilling Fluid Type OBM		Max. Density 9.60 lb/gal		Plastic Viscosity cP		Tubing/Drill Pipe					
						T/D		Depth, ft		Size, in	
										Weight, lb/ft	
										Grade	
										Thread	
Service Line Cementing		Job Type 5.5" Production									
Max. Allowed Tub. Press psi		Max. Allowed Ann. Press psi		WH Connection 5.5" Double Plug		Perforations/Open Hole					
						Top, ft		Bottom, ft		shot/ft	
										No. of Shots	
										Total Interval ft	
										Diameter in	
						Treat Down		Displacement 412.0 bbl		Packer Type	
										Packer Depth ft	
						Tubing Vol. bbl		Casing Vol. bbl		Annular Vol. 746.0 bbl	
										Openhole Vol. bbl	
Casing/Tubing Secured <input type="checkbox"/>		1 Hole Vol. Circulated prior to Cement <input type="checkbox"/>				Casing Tools				Squeeze Job	
Lift Pressure psi						Shoe Type Float				Squeeze Type	
Pipe Rotated <input type="checkbox"/>		Pipe Reciprocated <input type="checkbox"/>				Shoe Depth 17846.0 ft				Tool Type	
No. Centralizers		Top Plugs 1		Bottom Plugs 1		Stage Tool Type				Tool Depth ft	
Cement Head Type Double						Stage Tool Depth ft				Tail Pipe Size in	
Job Scheduled For Apr/25/2017 14:00		Arrived on Location Apr/25/2017 14:00		Leave Location Apr/25/2017		Collar Type Float				Tail Pipe Depth ft	
						Collar Depth 17752.0 ft				Sqz. Total Vol. bbl	
Date	Time 24-hr clock	Treating Pressure PSI	Flow Rate B/M	Density LB/G	Volume BBL	Message					
04/25/2017	19:12:27	-1	0.0	8.37	0.0						
04/25/2017	19:12:35	-1	0.0	8.37	0.0	Start Job					
04/25/2017	19:12:39	-0	0.0	8.37	0.0	Held JSA					
04/25/2017	19:13:20	-0	0.0	8.36	0.0	Water Sample Taken/Tested					
04/25/2017	19:14:14	-1	0.0	8.36	0.0	Start Pumping Water					
04/25/2017	19:14:27	-1	0.0	8.37	0.0						
04/25/2017	19:15:56	49	2.1	8.36	1.2	Flush Lines					
04/25/2017	19:16:27	292	4.6	8.36	2.9						
04/25/2017	19:18:18	1015	0.0	8.37	5.2	Pressure Test Lines					
04/25/2017	19:18:27	1013	0.0	8.37	5.2						
04/25/2017	19:20:27	4907	0.0	8.37	5.2						
04/25/2017	19:22:27	4842	0.0	8.37	5.2						
04/25/2017	19:23:55	18	0.0	8.37	5.2	End Pressure Test					
04/25/2017	19:24:27	18	0.0	8.36	5.2						
04/25/2017	19:24:41	18	0.0	8.37	5.2	End Water					
04/25/2017	19:26:11	167	2.3	10.24	6.6	Start Pumping Spacer					
04/25/2017	19:26:27	107	2.2	10.69	7.2						
04/25/2017	19:28:27	96	2.2	10.73	12.5						
04/25/2017	19:30:27	354	5.9	10.97	23.4						
04/25/2017	19:32:27	353	6.0	10.93	33.8						
04/25/2017	19:34:27	377	6.2	10.91	46.0						

Well			Field	Job Start		Customer		Job Number	
Chica4N2-23HZ			Wattenberg		Apr/25/2017		Anadarko		D5VO-01993
Date	Time 24-hr clock	Treating Pressure PSI	Flow Rate B/M	Density LB/G	Volume BBL	Message			
04/25/2017	19:38:27	113	3.9	10.94	70.2				
04/25/2017	19:40:27	195	6.2	10.78	82.2				
04/25/2017	19:42:27	7	0.0	10.99	91.6				
04/25/2017	19:42:58	4	0.0	10.98	91.6	End Spacer			
04/25/2017	19:44:27	3	0.0	10.96	91.6				
04/25/2017	19:45:14	2	0.0	10.96	91.6	Spacer = 80 bbl			
04/25/2017	19:46:00	2	0.0	10.96	91.6	Drop Bottom Plug			
04/25/2017	19:46:27	1	0.0	10.95	91.6				
04/25/2017	19:48:10	84	2.4	11.94	93.8	Start Mixing Lead Slurry			
04/25/2017	19:48:27	84	2.4	11.94	94.5				
04/25/2017	19:50:27	90	2.4	12.07	100.3				
04/25/2017	19:52:27	401	6.4	12.06	108.5				
04/25/2017	19:53:54	381	6.4	11.99	117.9	Wet and Dry Samples Taken			
04/25/2017	19:53:55	382	6.4	11.99	118.0	700 sks Yield = 1.77 cuft/sk			
04/25/2017	19:54:27	395	6.4	11.99	121.4				
04/25/2017	19:56:27	408	6.4	12.01	134.3				
04/25/2017	19:58:27	412	6.4	11.98	147.2				
04/25/2017	20:00:27	419	6.5	11.95	160.1				
04/25/2017	20:02:27	422	6.5	12.04	173.0				
04/25/2017	20:04:27	439	6.5	12.06	185.9				
04/25/2017	20:06:27	422	6.5	12.11	198.8				
04/25/2017	20:08:27	374	6.5	12.06	211.7				
04/25/2017	20:10:27	209	4.5	11.99	223.6				
04/25/2017	20:12:27	219	4.6	11.90	234.2				
04/25/2017	20:14:27	241	4.6	11.96	243.4				
04/25/2017	20:16:27	438	6.4	11.97	254.8				
04/25/2017	20:18:27	464	6.4	12.04	267.7				
04/25/2017	20:20:27	507	6.4	12.09	280.5				
04/25/2017	20:22:27	480	6.4	12.12	293.4				
04/25/2017	20:24:27	481	6.4	12.14	306.2				
04/25/2017	20:25:34	79	2.2	12.12	312.3	Lead = 225 bbl			
04/25/2017	20:26:27	78	2.3	12.13	314.3				
04/25/2017	20:26:29	78	2.3	12.12	314.4	End Lead Slurry			
04/25/2017	20:28:27	95	2.6	12.29	319.2				
04/25/2017	20:29:57	100	2.1	13.43	322.7	Start Mixing Tail Slurry			
04/25/2017	20:30:27	281	4.5	13.42	324.2				
04/25/2017	20:32:27	668	8.3	13.57	337.5				
04/25/2017	20:34:27	442	6.4	13.53	353.9				
04/25/2017	20:34:40	421	6.5	13.49	355.3	Wet and Dry Samples Taken			
04/25/2017	20:34:41	434	6.5	13.49	355.4	Density Verified with Mudscale			
04/25/2017	20:34:42	434	6.4	13.49	355.5	Mix Water = 8.01 gal/sk			
04/25/2017	20:36:27	436	6.4	13.53	366.8				
04/25/2017	20:38:27	435	6.4	13.52	379.7				
04/25/2017	20:40:27	447	6.4	13.53	392.5				
04/25/2017	20:42:27	260	4.6	13.58	404.4				
04/25/2017	20:44:27	247	4.5	13.51	413.5				
04/25/2017	20:46:27	104	2.3	13.34	421.2				
04/25/2017	20:48:27	84	2.3	13.37	425.6				
04/25/2017	20:50:27	257	4.5	13.42	432.5				
04/25/2017	20:52:27	250	4.5	13.58	441.6				
04/25/2017	20:54:27	235	4.6	13.39	450.6				
04/25/2017	20:56:27	434	6.4	13.44	462.5				
04/25/2017	20:58:27	451	6.5	13.44	475.3				
04/25/2017	21:00:27	481	6.4	13.59	488.2				

Well			Field	Job Start		Customer	Job Number
Chica4N2-23HZ			Wattenberg	Apr/25/2017		Anadarko	D5VO-01993
Date	Time 24-hr clock	Treating Pressure PSI	Flow Rate B/M	Density LB/G	Volume BBL	Message	
04/25/2017	21:04:27	441	6.4	13.60	513.9		
04/25/2017	21:06:27	456	6.4	13.62	526.8		
04/25/2017	21:08:27	445	6.5	13.57	539.7		
04/25/2017	21:10:27	468	6.5	13.62	552.6		
04/25/2017	21:12:27	261	4.5	13.64	562.7		
04/25/2017	21:14:27	428	6.4	13.57	572.6		
04/25/2017	21:16:27	445	6.4	13.57	585.5		
04/25/2017	21:18:27	453	6.4	13.59	598.3		
04/25/2017	21:20:27	468	6.4	13.56	611.2		
04/25/2017	21:22:27	273	4.5	13.51	622.6		
04/25/2017	21:24:27	101	2.3	13.42	629.7		
04/25/2017	21:26:27	113	2.1	13.24	634.0		
04/25/2017	21:28:27	104	2.3	13.27	638.2		
04/25/2017	21:30:27	380	5.1	13.33	645.6		
04/25/2017	21:32:27	461	6.4	13.51	660.2		
04/25/2017	21:34:27	457	6.5	13.59	673.1		
04/25/2017	21:36:27	449	6.4	13.58	686.0		
04/25/2017	21:38:27	461	6.4	13.57	698.9		
04/25/2017	21:40:27	457	6.4	13.63	711.7		
04/25/2017	21:42:27	454	6.5	13.61	724.6		
04/25/2017	21:44:27	454	6.4	13.62	737.5		
04/25/2017	21:46:27	454	6.4	13.63	750.4		
04/25/2017	21:48:27	474	6.4	13.64	763.3		
04/25/2017	21:50:27	474	6.4	13.64	776.1		
04/25/2017	21:52:27	441	6.5	13.58	789.0		
04/25/2017	21:54:27	455	6.5	13.66	801.9		
04/25/2017	21:56:27	438	6.4	13.65	814.8		
04/25/2017	21:58:27	154	3.3	13.58	827.2		
04/25/2017	22:00:27	151	3.3	13.53	833.9		
04/25/2017	22:02:27	10	0.0	14.62	837.3		
04/25/2017	22:04:27	66	2.5	9.36	838.3		
04/25/2017	22:05:34	2	0.5	9.24	840.2	End Tail Slurry	
04/25/2017	22:06:27	7	1.0	8.42	841.3		
04/25/2017	22:06:36	4	0.0	8.35	841.4	Tail Slurry = 511 bbl	
04/25/2017	22:08:16	120	3.5	9.41	843.9	Start Wash Up	
04/25/2017	22:08:27	168	3.6	9.39	844.6		
04/25/2017	22:10:27	42	0.0	10.97	847.4		
04/25/2017	22:12:27	43	0.0	8.85	847.4		
04/25/2017	22:14:27	24	0.0	0.88	853.1		
04/25/2017	22:16:27	138	3.7	8.46	855.9		
04/25/2017	22:18:17	12	0.0	8.37	858.6	End Wash Up	
04/25/2017	22:18:27	12	0.0	8.38	858.6		
04/25/2017	22:18:37	40	0.2	8.38	858.6	Drop Top Plug	
04/25/2017	22:19:46	31	0.0	8.38	858.6	Start Displacement	
04/25/2017	22:20:27	107	4.6	8.40	860.9		
04/25/2017	22:22:27	274	8.4	8.39	874.3		
04/25/2017	22:24:27	268	8.4	8.38	891.1		
04/25/2017	22:26:27	679	8.3	8.37	907.8		
04/25/2017	22:28:27	952	8.3	8.38	924.4		
04/25/2017	22:30:27	1136	8.2	8.37	940.9		
04/25/2017	22:32:27	1337	8.2	8.37	957.4		
04/25/2017	22:34:27	1551	8.2	8.36	973.8		
04/25/2017	22:35:32	1675	8.2	8.36	982.7	Good Returns	
04/25/2017	22:36:27	1808	8.2	8.36	990.3		

Well			Field	Job Start		Customer		Job Number	
Chica4N2-23HZ			Wattenberg		Apr/25/2017		Anadarko		D5VO-01993
Date	Time 24-hr clock	Treating Pressure PSI	Flow Rate B/M	Density LB/G	Volume BBL	Message			
04/25/2017	22:40:27	2269	8.2	8.36	1023.0				
04/25/2017	22:42:27	2400	8.1	8.36	1039.3				
04/25/2017	22:44:27	2457	8.1	8.36	1055.6				
04/25/2017	22:46:27	2513	8.1	8.36	1071.9				
04/25/2017	22:48:27	2561	8.2	8.36	1088.2				
04/25/2017	22:50:27	2623	8.1	8.36	1104.5				
04/25/2017	22:52:27	2687	8.1	8.36	1120.7				
04/25/2017	22:54:27	2710	8.1	8.36	1137.0				
04/25/2017	22:56:27	2783	8.1	8.36	1153.3				
04/25/2017	22:58:27	2846	8.1	8.36	1169.5				
04/25/2017	23:00:27	2856	8.1	8.36	1185.7				
04/25/2017	23:02:27	2970	8.1	8.36	1202.0				
04/25/2017	23:04:27	2656	6.3	8.36	1215.7				
04/25/2017	23:05:05	2603	6.3	8.36	1219.6	Spacer to Surface, 352 Bbls Away			
04/25/2017	23:06:27	2590	6.3	8.36	1228.2				
04/25/2017	23:08:27	2769	6.3	8.36	1240.8				
04/25/2017	23:10:27	2687	6.3	8.36	1253.4				
04/25/2017	23:12:27	2564	5.4	8.36	1265.9				
04/25/2017	23:14:27	2179	2.2	8.37	1271.2				
04/25/2017	23:16:27	2265	2.2	8.37	1275.7				
04/25/2017	23:16:41	2713	2.2	8.37	1276.2	Bump Top Plug 2300-2800psi			
04/25/2017	23:16:43	2624	2.2	8.37	1276.3	End Displacement			
04/25/2017	23:16:49	2811	0.0	8.37	1276.3	Displacement = 412 bbl			
04/25/2017	23:18:27	2823	0.0	8.37	1276.3				
04/25/2017	23:20:24	3062	0.0	8.37	1276.6	Start 15 min CSG Test			
04/25/2017	23:20:27	3042	0.0	8.37	1276.6				
04/25/2017	23:22:27	3085	0.0	8.38	1276.6				
04/25/2017	23:24:27	3129	0.0	8.38	1276.6				
04/25/2017	23:26:27	3170	0.0	8.38	1276.6				
04/25/2017	23:28:27	3208	0.0	8.38	1276.6				
04/25/2017	23:30:27	3247	0.0	8.38	1276.6				
04/25/2017	23:32:27	3277	0.0	8.38	1276.6				
04/25/2017	23:34:27	3311	0.0	8.38	1276.6				
04/25/2017	23:36:27	3345	0.0	8.38	1276.6				
04/25/2017	23:38:27	3375	0.0	8.38	1276.6				
04/25/2017	23:39:40	1496	0.0	8.38	1276.6	End 15 Min CSG Test			
04/25/2017	23:40:03	18	0.0	8.38	1276.6	Check Floats			
04/25/2017	23:40:21	3	0.0	8.38	1276.6	5 bbl back			
04/25/2017	23:40:27	-1	0.0	8.38	1276.6				

Well Chica4N2-23HZ	Field Wattenberg	Job Start Apr/25/2017	Customer Anadarko	Job Number D5VO-01993
------------------------------	----------------------------	---------------------------------	-----------------------------	---------------------------------

Post Job Summary

Average Pump Rates, bbl/min					Volume of Fluid Injected, bbl					
Slurry 5.8	N2	Mud	Maximum Rate 25.0		Total Slurry 727.0	Mud 0.0	Spacer 80.0	N2		
Treating Pressure Summary, psi					Breakdown Fluid					
Maximum 4977	Final 77	Average 994	Bump Plug to 2500	Breakdown	Type		Volume bbl		Density lb/gal	
Avg. N2 Percent %		Designed Slurry Volume 727.0 bbl		Displacement 412.0 bbl		Mix Water Temp degF		Cement Circulated to Surface? <input type="checkbox"/>		Volume bbl
								Washed Thru Perfs <input type="checkbox"/>		To ft
Customer or Authorized Representative				Schlumberger Supervisor Ryan Call				Circulation Lost <input type="checkbox"/>		Job Completed <input checked="" type="checkbox"/>
								-		-