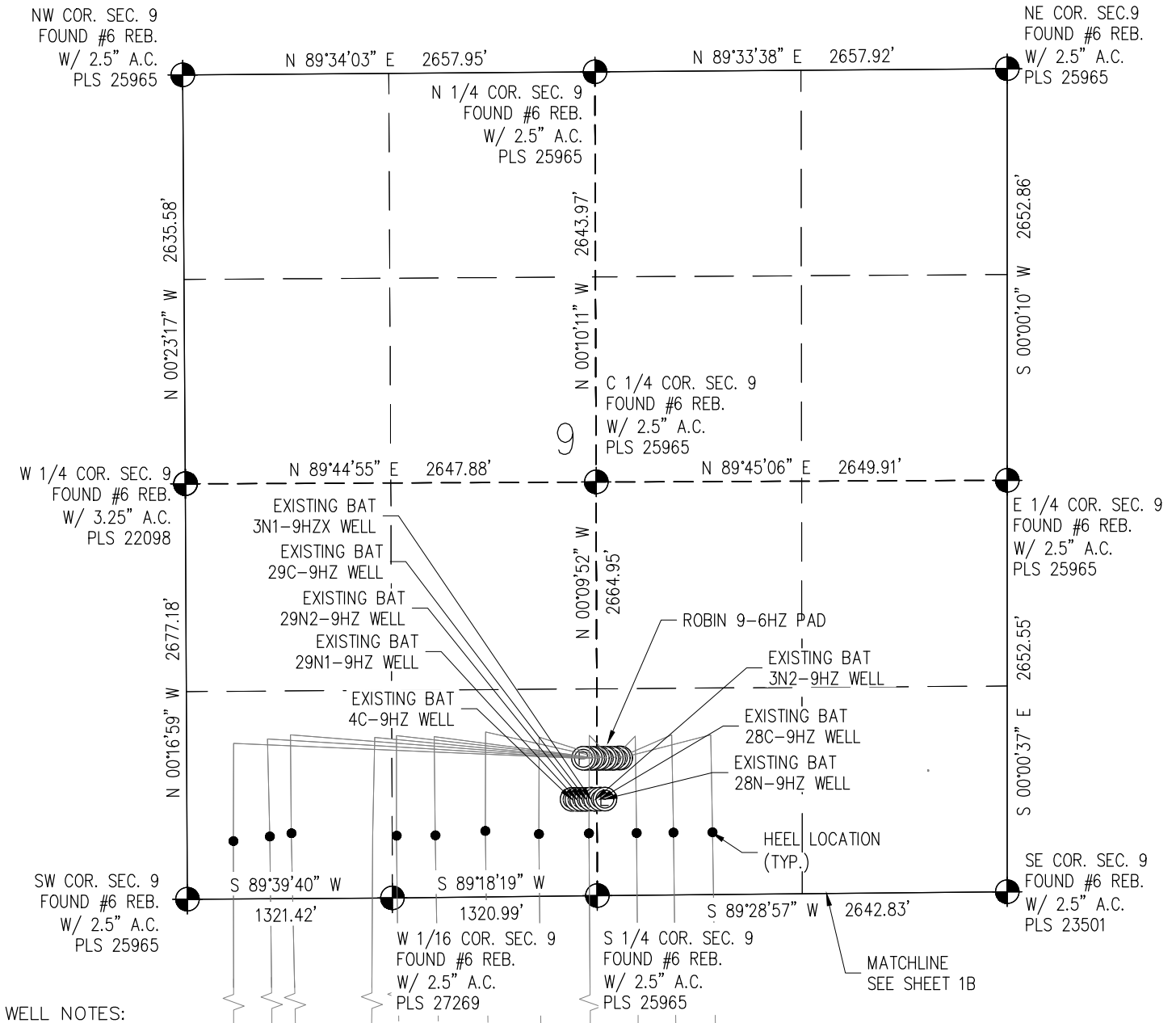


MULTI-WELL PLAN SECTION 9, T1N, R65W



WELL NOTES:

ROBIN 9-1HZ
SURFACE: 886' FSL & 2556' FWL, SECTION 9, T1N, R65W
BOTTOMHOLE: 469' FSL & 203' FWL, SECTION 21, T1N, R65W

ROBIN 9-2HZ
SURFACE: 885' FSL & 2571' FWL, SECTION 9, T1N, R65W
BOTTOMHOLE: 470' FSL & 543' FWL, SECTION 21, T1N, R65W

ROBIN 9-3HZ
SURFACE: 885' FSL & 2601' FWL, SECTION 9, T1N, R65W
BOTTOMHOLE: 469' FSL & 784' FWL, SECTION 21, T1N, R65W

ROBIN 9-4HZ
SURFACE: 885' FSL & 2616' FWL, SECTION 9, T1N, R65W
BOTTOMHOLE: 469' FSL & 1033' FWL, SECTION 21, T1N, R65W

ROBIN 9-5HZ
SURFACE: 885' FSL & 2643' FEL, SECTION 9, T1N, R65W
BOTTOMHOLE: 469' FSL & 1362' FWL, SECTION 21, T1N, R65W

ROBIN 9-6HZ
SURFACE: 885' FSL & 2628' FEL, SECTION 9, T1N, R65W
BOTTOMHOLE: 469' FSL & 1666' FWL, SECTION 21, T1N, R65W

ROBIN 9-7HZ
SURFACE: 884' FSL & 2598' FEL, SECTION 9, T1N, R65W
BOTTOMHOLE: 469' FSL & 1958' FWL, SECTION 21, T1N, R65W

ROBIN 9-8HZ
SURFACE: 884' FSL & 2583' FEL, SECTION 9, T1N, R65W
BOTTOMHOLE: 468' FSL & 2267' FWL, SECTION 21, T1N, R65W

ROBIN 9-9HZ
SURFACE: 884' FSL & 2553' FEL, SECTION 9, T1N, R65W
BOTTOMHOLE: 468' FSL & 2567' FWL, SECTION 21, T1N, R65W

ROBIN 9-10HZ
SURFACE: 884' FSL & 2538' FEL, SECTION 9, T1N, R65W
BOTTOMHOLE: 468' FSL & 2411' FEL, SECTION 21, T1N, R65W

ROBIN 9-11HZ
SURFACE: 884' FSL & 2508' FEL, SECTION 9, T1N, R65W
BOTTOMHOLE: 468' FSL & 2124' FEL, SECTION 21, T1N, R65W

ROBIN 9-12HZ
SURFACE: 884' FSL & 2493' FEL, SECTION 9, T1N, R65W
BOTTOMHOLE: 468' FSL & 1850' FEL, SECTION 21, T1N, R65W

NOTES:

1. INDICATES SECTION CORNER
2. INDICATES CALCULATED CORNER
3. (C) INDICATES CALCULATED DIMENSION
4. BASIS OF BEARING DERIVED FROM COLORADO COORDINATE SYSTEM OF 1983 NORTH ZONE.
5. ALL MEASURED DISTANCES ARE GRID.
COMBINED SCALE FACTOR 0.99972702 CALCULATED FROM THE SE. CORNER OF SECTION 9, T1N, R65W
6. WELL FOOTAGES ARE MEASURED AT RIGHT ANGLES TO THE SECTION LINES.

0 1000'
Scale 1" = 1000' ft

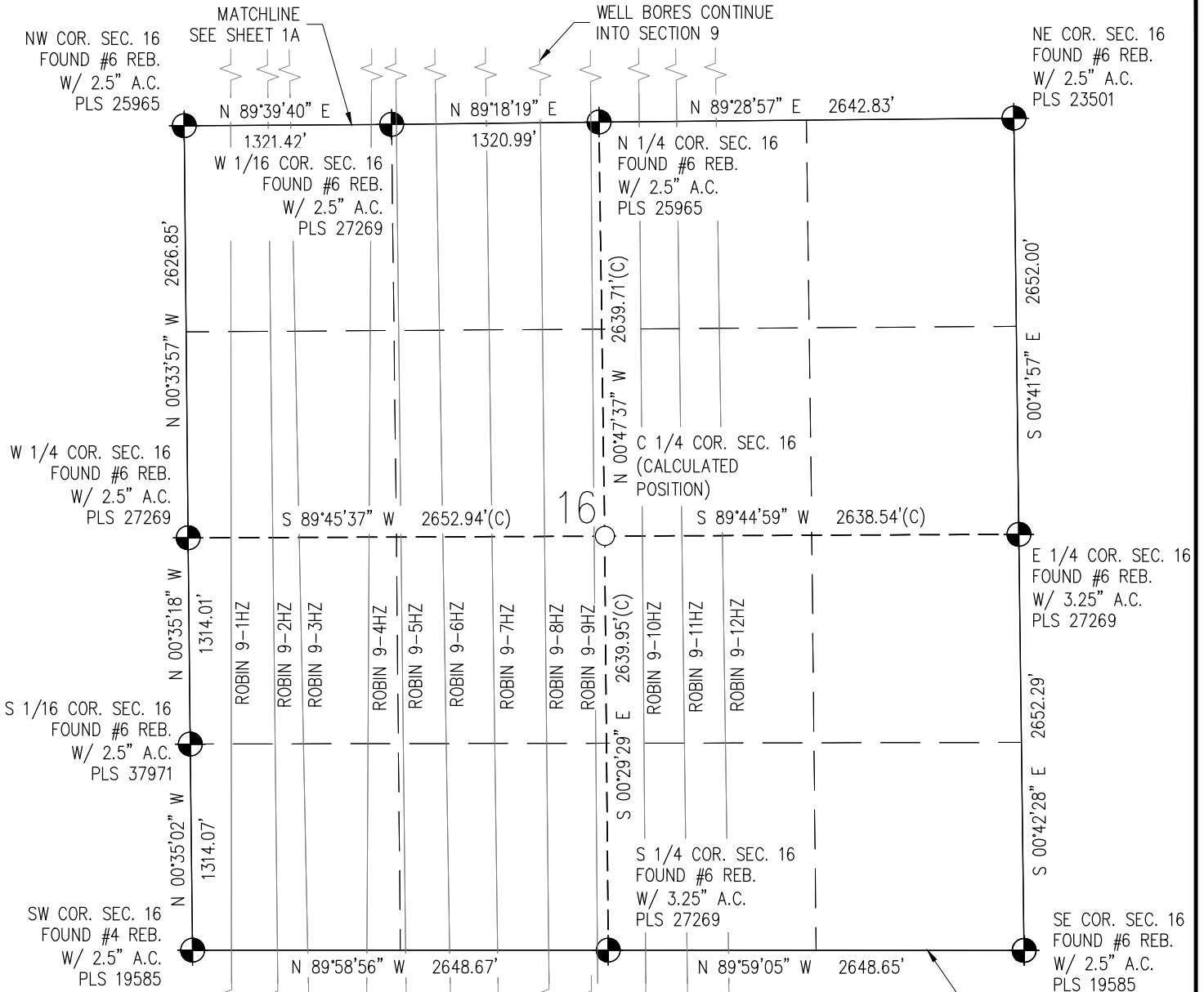
WELL PAD - ROBIN 9-6HZ
MULTI-WELL PLAN
ROBIN 9-1HZ, ROBIN 9-2HZ, ROBIN 9-3HZ, ROBIN 9-4HZ, ROBIN 9-5HZ, ROBIN 9-6HZ, ROBIN 9-7HZ, ROBIN 9-8HZ, ROBIN 9-9HZ, ROBIN 9-10HZ, ROBIN 9-11HZ, ROBIN 9-12HZ
LOCATED IN SECTION 9 T1N, R65W, 6TH P.M.
WELD COUNTY, COLORADO

Kerr-McGee Oil & Gas Onshore L.P.
1099 18th Street
Denver, Colorado 80202

DRAWN BY	JMH	CHECKED BY	AAD
INITIAL SUBMITTAL	3/31/2017		
REVISED	4/18/2017		
DRAWING SIZE	8.5" X 11"		
JOB NO.	ANAO1N65W09-02		
SHEET	1A OF 1		

BASELINE
Engineering - Planning - Surveying
4007 S. LINCOLN AVENUE, SUITE 405 - LOVELAND, COLORADO 80537
P: 970.353.7800 - F: 970.353.7801 - www.baselinecorp.com

MULTI-WELL PLAN SECTION 16, T1N, R65W



WELL NOTES:

ROBIN 9-1HZ
SURFACE: 886' FSL & 2556' FWL, SECTION 9, T1N, R65W
BOTTOMHOLE: 469' FSL & 203' FWL, SECTION 21, T1N, R65W

ROBIN 9-2HZ
SURFACE: 885' FSL & 2571' FWL, SECTION 9, T1N, R65W
BOTTOMHOLE: 470' FSL & 543' FWL, SECTION 21, T1N, R65W

ROBIN 9-3HZ
SURFACE: 885' FSL & 2601' FWL, SECTION 9, T1N, R65W
BOTTOMHOLE: 469' FSL & 784' FWL, SECTION 21, T1N, R65W

ROBIN 9-4HZ
SURFACE: 885' FSL & 2616' FWL, SECTION 9, T1N, R65W
BOTTOMHOLE: 469' FSL & 1033' FWL, SECTION 21, T1N, R65W

ROBIN 9-5HZ
SURFACE: 885' FSL & 2643' FWL, SECTION 9, T1N, R65W
BOTTOMHOLE: 469' FSL & 1362' FWL, SECTION 21, T1N, R65W

ROBIN 9-6HZ
SURFACE: 885' FSL & 2628' FWL, SECTION 9, T1N, R65W
BOTTOMHOLE: 469' FSL & 1666' FWL, SECTION 21, T1N, R65W

ROBIN 9-7HZ
SURFACE: 884' FSL & 2598' FWL, SECTION 9, T1N, R65W
BOTTOMHOLE: 469' FSL & 1958' FWL, SECTION 21, T1N, R65W

ROBIN 9-8HZ
SURFACE: 884' FSL & 2583' FWL, SECTION 9, T1N, R65W
BOTTOMHOLE: 468' FSL & 2267' FWL, SECTION 21, T1N, R65W

ROBIN 9-9HZ
SURFACE: 884' FSL & 2553' FEL, SECTION 9, T1N, R65W
BOTTOMHOLE: 468' FSL & 2567' FWL, SECTION 21, T1N, R65W

ROBIN 9-10HZ
SURFACE: 884' FSL & 2538' FEL, SECTION 9, T1N, R65W
BOTTOMHOLE: 468' FSL & 2411' FWL, SECTION 21, T1N, R65W

ROBIN 9-11HZ
SURFACE: 884' FSL & 2508' FEL, SECTION 9, T1N, R65W
BOTTOMHOLE: 468' FSL & 2124' FWL, SECTION 21, T1N, R65W

ROBIN 9-12HZ
SURFACE: 884' FSL & 2493' FEL, SECTION 9, T1N, R65W
BOTTOMHOLE: 468' FSL & 1850' FWL, SECTION 21, T1N, R65W

WELL BORES CONTINUE INTO SECTION 21

NOTES:

- INDICATES SECTION CORNER
- INDICATES CALCULATED CORNER
- (C) INDICATES CALCULATED DIMENSION
- BASIS OF BEARING DERIVED FROM COLORADO COORDINATE SYSTEM OF 1983 NORTH ZONE.
- ALL MEASURED DISTANCES ARE GRID.
- COMBINED SCALE FACTOR 0.99972702 CALCULATED FROM THE SE. CORNER OF SECTION 9, T1N, R65W
- WELL FOOTAGES ARE MEASURED AT RIGHT ANGLES TO THE SECTION LINES.

Scale 1" = 1000' ft

WELL PAD - ROBIN 9-6HZ

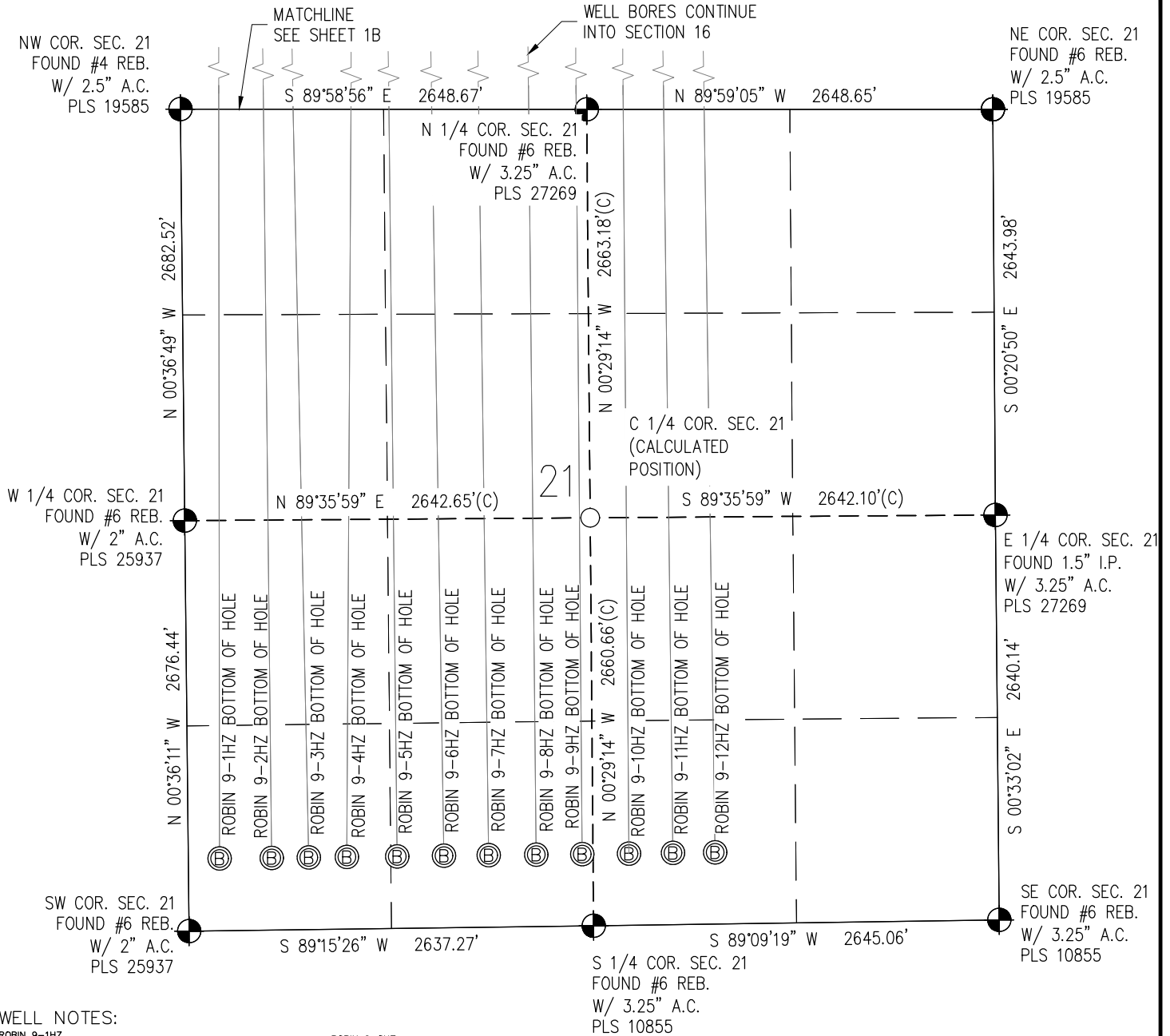
MULTI-WELL PLAN
ROBIN 9-1HZ, ROBIN 9-2HZ, ROBIN 9-3HZ, ROBIN 9-4HZ, ROBIN 9-5HZ, ROBIN 9-6HZ, ROBIN 9-7HZ, ROBIN 9-8HZ, ROBIN 9-9HZ, ROBIN 9-10HZ, ROBIN 9-11HZ, ROBIN 9-12HZ
LOCATED IN SECTION 9 T1N, R65W, 6TH P.M.
WELD COUNTY, COLORADO

**Kerr-McGee Oil &
Gas Onshore L.P.**
1099 18th Street
Denver, Colorado 80202

DRAWN BY	JMH	CHECKED BY	AAD
INITIAL SUBMITTAL	3/31/2017		
REVISED	4/18/2017		
DRAWING SIZE	8.5" X 11"		
JOB NO.	ANAG165W09-02		
SHEET	1B OF 1		

BASELINE
Engineering - Planning - Surveying
4007 S. LINCOLN AVENUE, SUITE 405 - LOVELAND, COLORADO 80537
P: 970.353.7800 - F: 970.353.7801 - www.baselinescorp.com

MULTI-WELL PLAN SECTION 21, T1N, R65W



WELL NOTES:

ROBIN 9-1HZ
SURFACE: 886' FSL & 2556' FWL, SECTION 9, T1N, R65W
BOTTOMHOLE: 469' FSL & 203' FWL, SECTION 21, T1N, R65W

ROBIN 9-2HZ
SURFACE: 885' FSL & 2571' FWL, SECTION 9, T1N, R65W
BOTTOMHOLE: 470' FSL & 543' FWL, SECTION 21, T1N, R65W

ROBIN 9-3HZ
SURFACE: 885' FSL & 2601' FWL, SECTION 9, T1N, R65W
BOTTOMHOLE: 469' FSL & 784' FWL, SECTION 21, T1N, R65W

ROBIN 9-4HZ
SURFACE: 885' FSL & 2616' FWL, SECTION 9, T1N, R65W
BOTTOMHOLE: 469' FSL & 1033' FWL, SECTION 21, T1N, R65W

ROBIN 9-5HZ
SURFACE: 885' FSL & 2643' FWL, SECTION 9, T1N, R65W
BOTTOMHOLE: 469' FSL & 1362' FWL, SECTION 21, T1N, R65W

ROBIN 9-6HZ
SURFACE: 885' FSL & 2628' FWL, SECTION 9, T1N, R65W
BOTTOMHOLE: 469' FSL & 1666' FWL, SECTION 21, T1N, R65W

ROBIN 9-7HZ
SURFACE: 884' FSL & 2598' FWL, SECTION 9, T1N, R65W
BOTTOMHOLE: 469' FSL & 1958' FWL, SECTION 21, T1N, R65W

ROBIN 9-8HZ
SURFACE: 884' FSL & 2583' FWL, SECTION 9, T1N, R65W
BOTTOMHOLE: 468' FSL & 2267' FWL, SECTION 21, T1N, R65W

ROBIN 9-9HZ
SURFACE: 884' FSL & 2553' FWL, SECTION 9, T1N, R65W
BOTTOMHOLE: 468' FSL & 2567' FWL, SECTION 21, T1N, R65W

ROBIN 9-10HZ
SURFACE: 884' FSL & 2538' FWL, SECTION 9, T1N, R65W
BOTTOMHOLE: 468' FSL & 2411' FWL, SECTION 21, T1N, R65W

ROBIN 9-11HZ
SURFACE: 884' FSL & 2508' FWL, SECTION 9, T1N, R65W
BOTTOMHOLE: 468' FSL & 2124' FWL, SECTION 21, T1N, R65W

ROBIN 9-12HZ
SURFACE: 884' FSL & 2493' FWL, SECTION 9, T1N, R65W
BOTTOMHOLE: 468' FSL & 1850' FWL, SECTION 21, T1N, R65W

NOTES:

- INDICATES SECTION CORNER
- INDICATES CALCULATED CORNER
- (C) INDICATES CALCULATED DIMENSION
- BASIS OF BEARING DERIVED FROM COLORADO COORDINATE SYSTEM OF 1983 NORTH ZONE.
- ALL MEASURED DISTANCES ARE GRID.
- COMBINED SCALE FACTOR 0.99972702 CALCULATED FROM THE SE. CORNER OF SECTION 9, T1N, R65W
- WELL FOOTAGES ARE MEASURED AT RIGHT ANGLES TO THE SECTION LINES.

Scale 1" = 1000' ft

WELL PAD - ROBIN 9-6HZ

MULTI-WELL PLAN
ROBIN 9-1HZ, ROBIN 9-2HZ, ROBIN 9-3HZ, ROBIN 9-4HZ, ROBIN 9-5HZ, ROBIN 9-6HZ, ROBIN 9-7HZ, ROBIN 9-8HZ, ROBIN 9-9HZ, ROBIN 9-10HZ, ROBIN 9-11HZ, ROBIN 9-12HZ
LOCATED IN SECTION 9 T1N, R65W, 6TH P.M.
WELD COUNTY, COLORADO

**Kerr-McGee Oil &
Gas Onshore L.P.**

1099 18th Street
Denver, Colorado 80202

DRAWN BY
JMH

CHECKED BY
AAD

INITIAL SUBMITTAL 3/31/2017
REVISED 4/18/2017
DRAWING SIZE 8.5" X 11"
JOB NO. ANA01N65W09-02
SHEET 1C OF 1

BASELINE
Engineering - Planning - Surveying

4007 S. LINCOLN AVENUE, SUITE 405 - LOVELAND, COLORADO 80537
P: 970.353.7800 - F: 970.353.7801 - www.baselinecorp.com