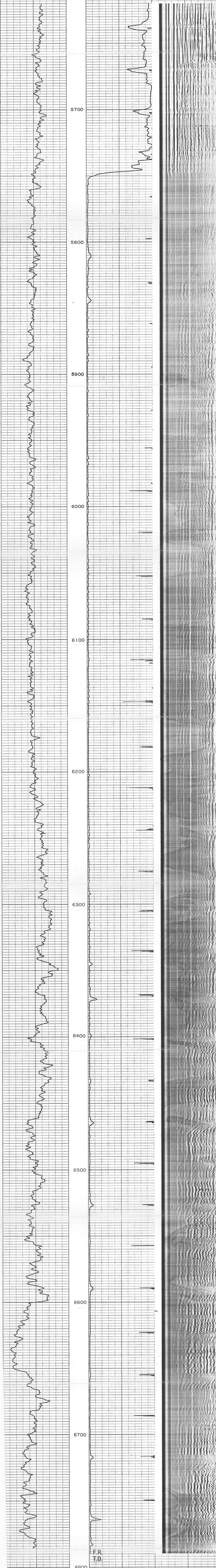


FLUID NO.	COMPANY <u>SEALITY OIL & GAS CORP</u>		
WELL	<u>SPICE STAKE C 6-13</u>		
FIELD	<u>WATERBURY</u>	STATE	<u>CONNECTICUT</u>
COUNTY	<u>WIND</u>	LOCATION	<u>500 S.W.</u>
DATE	<u>10-22-1992</u>		
SEC	<u>6</u>	TWP	<u>44</u>
RGE	<u>63W</u>		
PERMANENT DATUM	<u>6.C.</u>	ELEV	<u>4604</u>
LOG MEASURED FROM	<u>E.P.</u>	OF	<u>4612</u>
BRUING MEASURED FROM	<u>E.B</u>	CL	<u>4604</u>
OTHER SERVICES	<u>PERFORATIONS</u>		
Run No.	<u>005</u>		
Drill Collar	<u>68-61E-CLL</u>		
Depth Logger	<u>62-66</u>		
Bottom Depth Interval	<u>62-60</u>		
Top Logged Interval	<u>5620</u>		
Time fluid in hole	<u>2.475L</u>		
Max rec. temp. deg F	<u>74.7</u>		
Operating rig time	<u>4.24CL</u>		
Recorded by	<u>W.A. HIPP</u>		
Witnessed by	<u>W.A. HIPP</u>		
Run No.	Bit	From	To
2	7 7/8	333	6826
Size	Wgt	From	To
8 7/8	24	5045	333
2 3/8	3045	P.O.	

FILE COPY

GAMMA RAY EQUIPMENT & LOGGING DATA									
Tool No.	Tool Model No.	Diameter	Detector Model No.	Type	Length	Distance to N. Source	REMARKS:	Speed FPM	T. C. Sec.
		2"		SC 1171	12"			30	7
		6740						5620	

GAMMA-RAY	DEPTH	AMPLITUDE	SEISMIC SPECTRUM
GAMMA RAY API UNITS		AMPLITUDE MILLIVOLTS	SEISMIC SPECTRUM RECORDING
0		100	MICRO SECONDS 1000



F.P.
T.D.