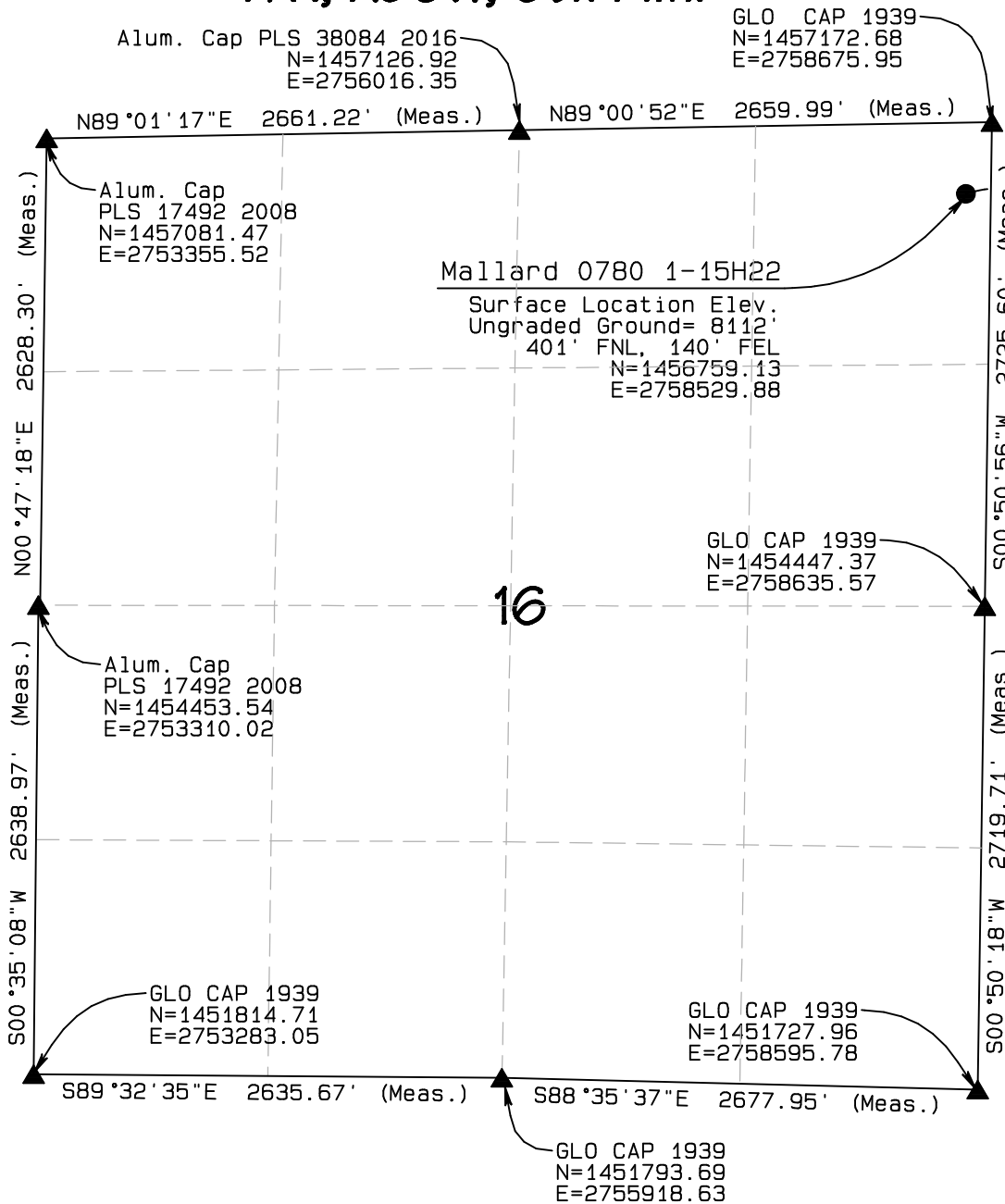


T7N, R80W, 6th P.M.

SandRidge Exploration & Production, LLC



Surface Location, Mallard 0780 1-15H22 located as shown in the NE1/4NE1/4 of Section 16, T7N, R80W, 6th P.M., Jackson County, Colorado.

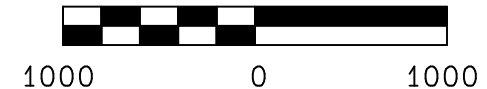
BASIS OF BEARINGS:

US STATE PLANE 1983
CO NORTH 0501 GRID

BASIS OF ELEVATION

SPOT ELEVATION AT THE NE CORNER OF SECTION 16, T7N, R80W, 6TH PM, TAKEN FROM THE MAC FARLANE RESERVOIR QUADRANGLE, USGS 7.5 MIN QUAD (TOPOGRAPHIC MAP) WITH SAID ELEVATION MARKED AS BEING 8120 FEET.

GRAPHIC SCALE 1"=1000'



THIS IS TO CERTIFY THAT THE ABOVE PLAT WAS PREPARED FROM FIELD NOTES OF ACTUAL SURVEYS MADE BY ME OR UNDER MY SUPERVISION AND THAT THE SAME ARE TRUE AND CORRECT TO THE BEST OF MY KNOWLEDGE AND BELIEF.



LEGEND

FOUND CORNER ▲
PROPOSED WELL ●
PROPOSED BHL/LPL ○

NAD 83 (TOP OF FORMATION)	NAD 83 (SURFACE LOCATION)
LATITUDE=40.583920°N LONGITUDE=106.367146°W	LATITUDE=40.583981°N LONGITUDE=106.369379°W PDOP = 2.096
NAD 83 (TARGET BOTTOM HOLE)	NAD 83 (LANDING POINT LOCATION)
LATITUDE=40.55589°N LONGITUDE=106.36547°W	LATITUDE=40.582674°N LONGITUDE=106.365314°W

NORTH PARK ENGINEERING & CONSULTING, INC.

P.O. BOX 395
WALDEN, CO 80480
(970) 723-3725

DATE OF FIELD WORK: APR 19, 2017 DRAWING COMPLETION: MAY 24, 2017
SURVEYED BY: LRK DRAWN BY: ADL CHECKED BY: RRM

T7N, R80W, 6th P.M.

SandRidge Exploration & Production, LLC

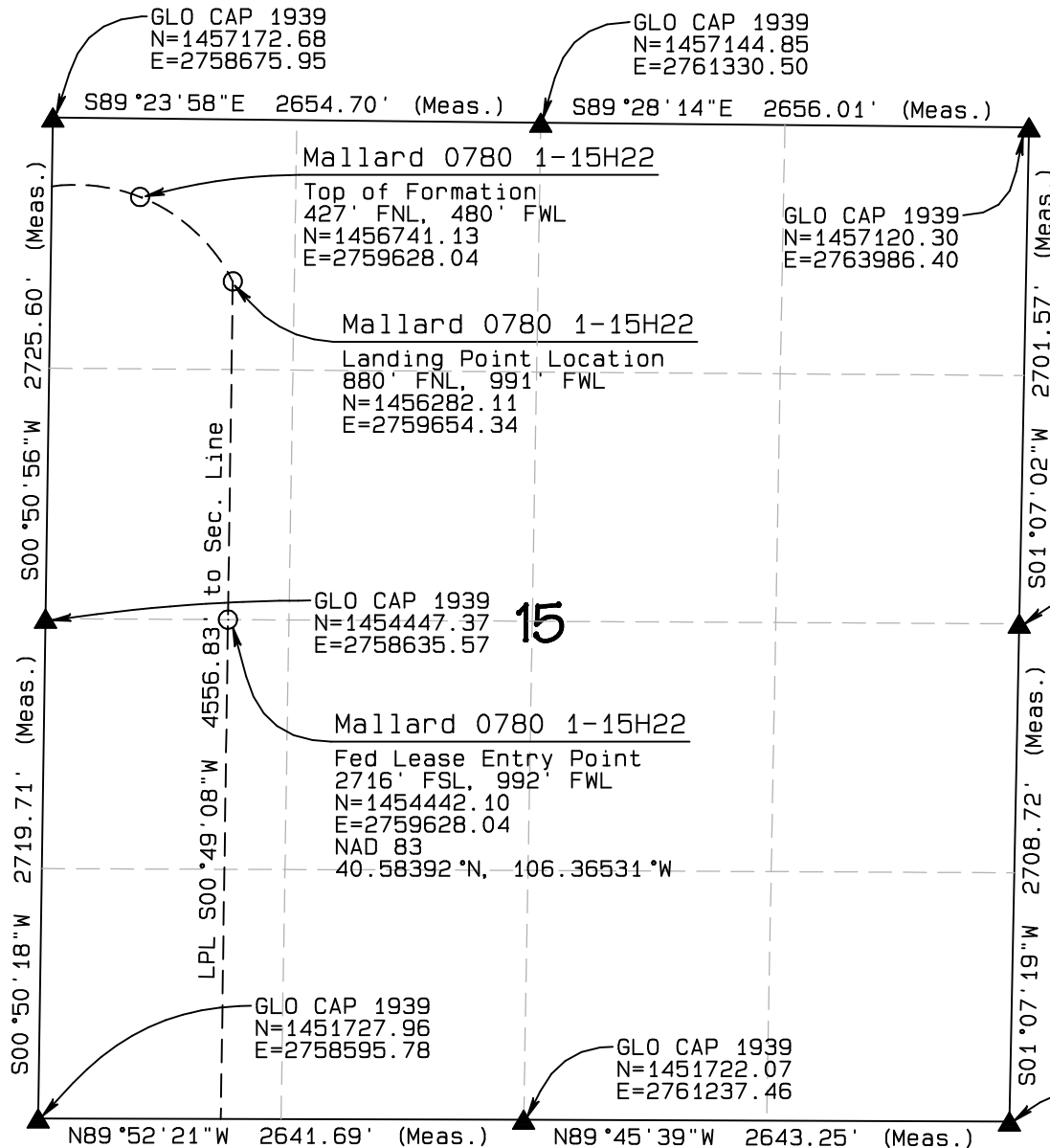
Landing Point Location, Mallard 0780 1-15H22
located as shown in the
NW1/4NW1/4 of Section 15, T7N,
R80W, 6th P.M., Jackson County, Colorado.

BASIS OF BEARINGS:

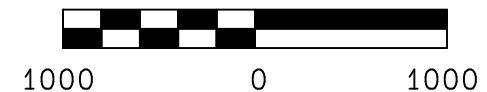
US STATE PLANE 1983
CO NORTH 0501 GRID

BASIS OF ELEVATION

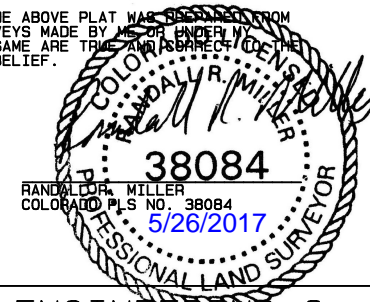
SPOT ELEVATION AT THE NE CORNER OF SECTION 16,
T7N, R80W, 6TH PM, TAKEN FROM THE
MAC FARLANE RESERVOIR QUADRANGLE,
USGS 7.5 MIN QUAD (TOPOGRAPHIC MAP)
WITH SAID ELEVATION MARKED AS BEING 8120 FEET.



GRAPHIC SCALE 1"=1000'



THIS IS TO CERTIFY THAT THE ABOVE PLAT WAS PREPARED FROM
FIELD NOTES OF ACTUAL SURVEYS MADE BY ME OR UNDER MY
SUPERVISION AND THAT THE SAME ARE TRUE AND CORRECT TO THE
BEST OF MY KNOWLEDGE AND BELIEF.



LEGEND

FOUND CORNER ▲
PROPOSED WELL ●
PROPOSED BHL/LPL ○

NAD 83 (TOP OF FORMATION)	NAD 83 (SURFACE LOCATION)
LATITUDE=40.583920°N LONGITUDE=106.367146°W	LATITUDE=40.583981°N LONGITUDE=106.369379°W PDOP = 2.096
NAD 83 (TARGET BOTTOM HOLE)	NAD 83 (LANDING POINT LOCATION)
LATITUDE=40.55589°N LONGITUDE=106.36547°W	LATITUDE=40.582674°N LONGITUDE=106.365314°W

NORTH PARK ENGINEERING &
CONSULTING, INC.

P.O. BOX 395
WALDEN, CO 80480
(970) 723-3725

DATE OF FIELD WORK: APR 19, 2017 DRAWING COMPLETION: MAY 24, 2017
SURVEYED BY: LRK DRAWN BY: ADL CHECKED BY: RRM

T7N, R80W, 6th P.M.

SandRidge Exploration & Production, LLC

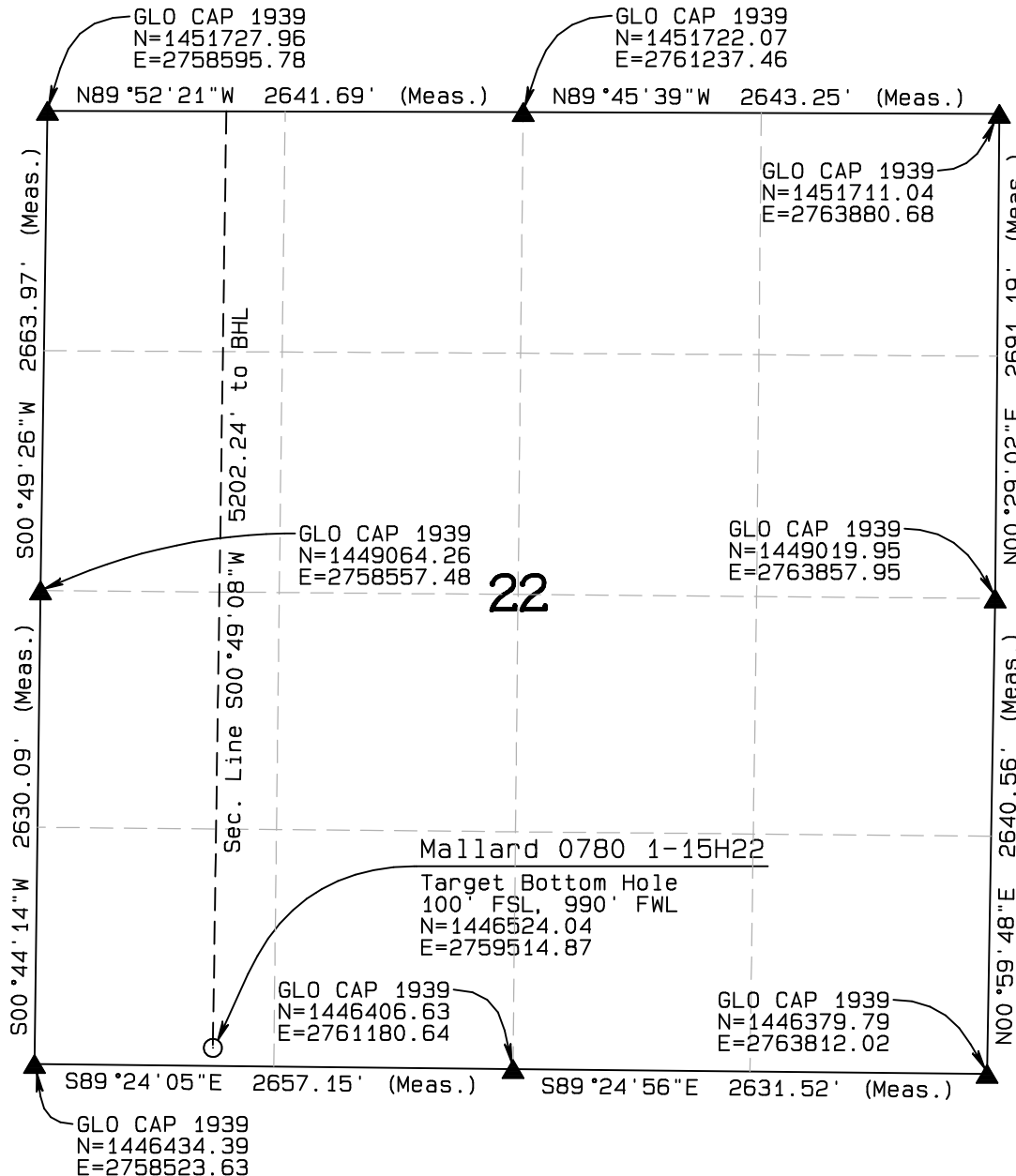
Bottom Hole Location, Mallard 0780 1-15H22 located as shown in the SW1/4SW1/4 of Section 22, T7N, R80W, 6th P.M., Jackson County, Colorado.

BASIS OF BEARINGS:

US STATE PLANE 1983
CO NORTH 0501 GRID

BASIS OF ELEVATION

SPOT ELEVATION AT THE NE CORNER OF SECTION 16, T7N, R80W, 6TH PM, TAKEN FROM THE MAC FARLANE RESERVOIR QUADRANGLE, USGS 7.5 MIN QUAD (TOPOGRAPHIC MAP) WITH SAID ELEVATION MARKED AS BEING 8120 FEET.

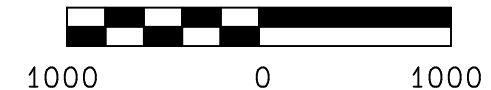


LEGEND

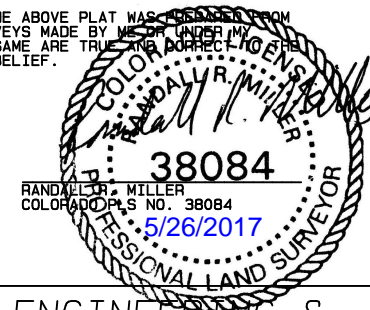
FOUND CORNER ▲
PROPOSED WELL ●
PROPOSED BHL/LPL ○

NAD 83 (TOP OF FORMATION)	NAD 83 (SURFACE LOCATION)
LATITUDE=40.583920°N LONGITUDE=106.367146°W	LATITUDE=40.583981°N LONGITUDE=106.369379°W PDOP = 2.096
NAD 83 (TARGET BOTTOM HOLE)	NAD 83 (LANDING POINT LOCATION)
LATITUDE=40.55589°N LONGITUDE=106.36547°W	LATITUDE=40.582674°N LONGITUDE=106.365314°W

GRAPHIC SCALE 1"=1000'



THIS IS TO CERTIFY THAT THE ABOVE PLAT WAS PREPARED FROM FIELD NOTES OF ACTUAL SURVEYS MADE BY ME OR UNDER MY SUPERVISION AND THAT THE SAME ARE TRUE AND CORRECT TO THE BEST OF MY KNOWLEDGE AND BELIEF.



NORTH PARK ENGINEERING & CONSULTING, INC.

P.O. BOX 395
WALDEN, CO 80480
(970) 723-3725

DATE OF FIELD WORK: APR 19, 2017	DRAWING COMPLETION: MAY 24, 2017
SURVEYED BY: LRK	DRAWN BY: ADL
	CHECKED BY: RRM