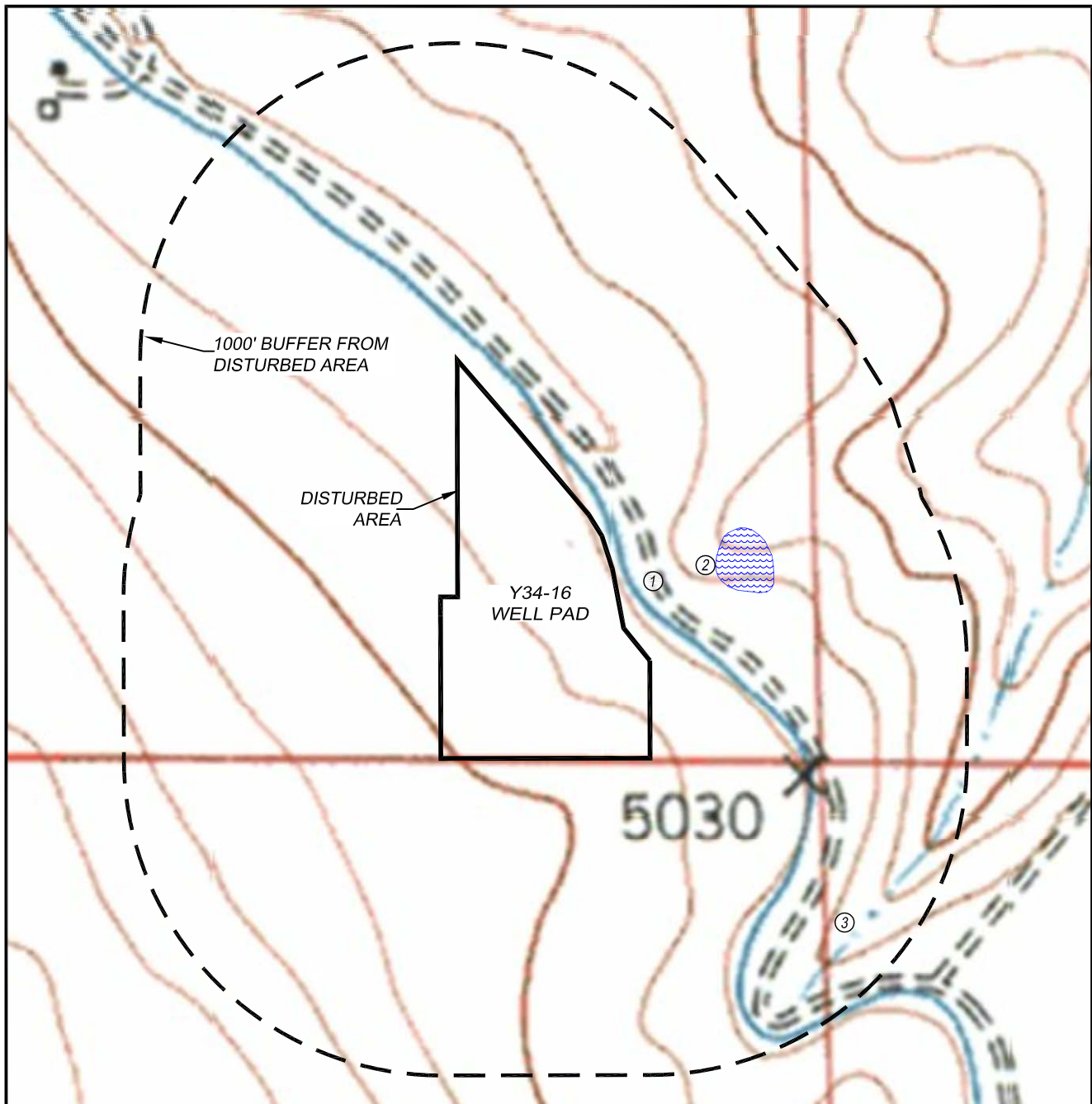


HYDROLOGY MAP Y34-16 WELL PAD

SECTION: 34
TOWNSHIP: 2N
RANGE: 64W



SURFACE WATER

(MEASURED FROM THE CLOSEST EDGE OF DISTURBED AREA)

1. CANAL: 61'± NE
2. POND: 325'± NE
3. INTERMITTENT STREAM: 825'± SE

