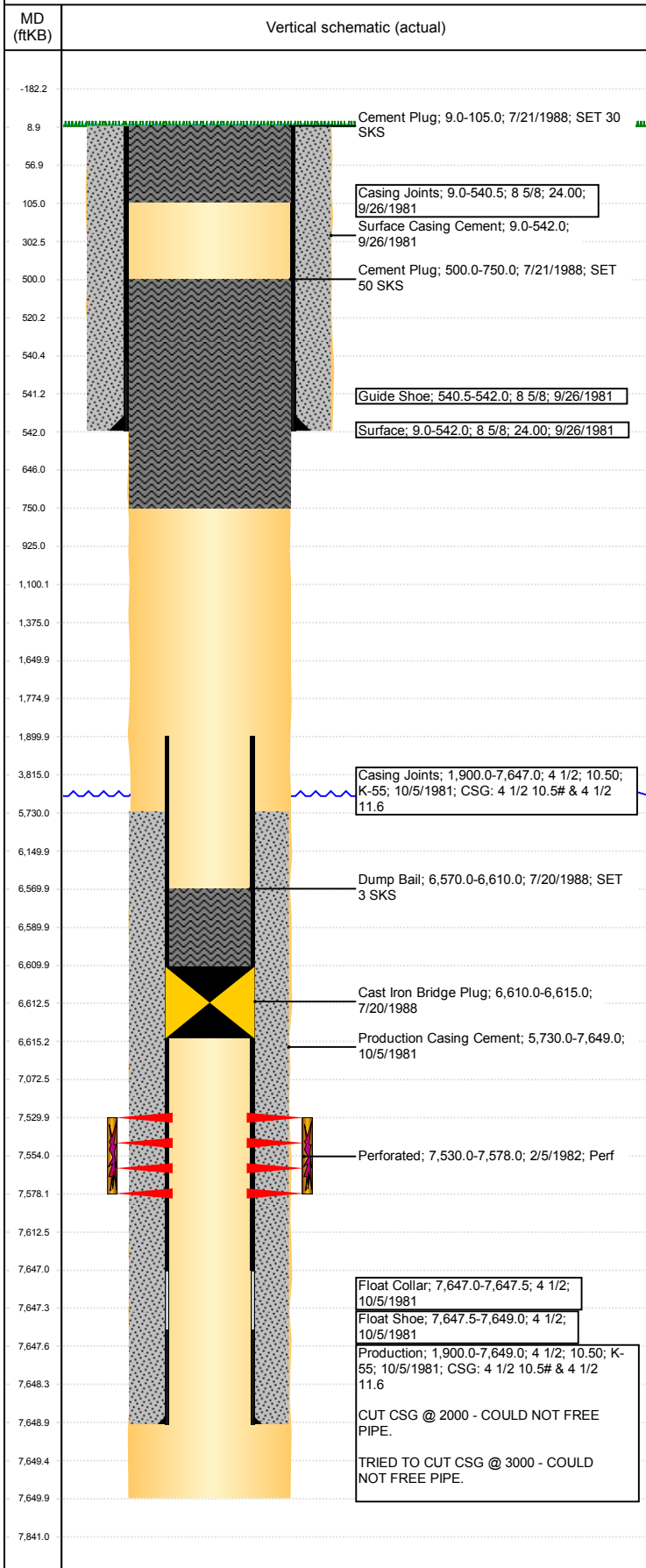


Well Name: DALE, IVAN 2

VERTICAL - ORIGINAL HOLE, 6/21/2017 11:02:29 AM



Well Header						
API 05-123-10404		Business Unit DJ BASIN		District 15	Well Config VERTICAL	
Original KB Elevation (ft) 4,976		KB - GL / MSL (ftKB) 9.00		Spud Date 9/26/1981		P & A Date 7/21/1988
Comment						
Directions To Well						
Current PBTD (mKB)						
Surface Location (Congressional)						
Quarter 3 SW		Quarter 4 SW	Section 14	Township 2	Twnshp N/S Dir N	Range 64
					Range E/W Dir W	
Bottom Hole Location						
North-South Distance (ft)		From N or S Line		East-West Distance (ft)		From E or W Line
Plug Back Total Depths						
Date	Depth (ftKB)	Method			Com	
Wellbore Sections						
Section Des		Size (in)		Act Top, MD (ftKB)		Act Btm, MD (ftKB)
SURFACE		12 1/4		9		542
PRODUCTION		7 7/8		542		7,650
Zone Statuses						
Zone Name	Status Date	Status	Fluid Type	Job		Prod Method
J SAND	2/28/1982	PR				
J SAND	7/21/1988	P&A				
Casing Strings						
Csg Des		Run Date	OD (in)	Wt/Len (lb/ft)	Grade	Top, MD (ftKB)
						MD (ftKB)
Surface		9/26/1981	8 5/8	24.00		9.0
Production		10/5/1981	4 1/2	10.50	K-55	9.0
						7,649.0
Cement						
Des				Top (ftKB)		Btm (ftKB)
Surface Casing Cement				9.0		542.0
Production Casing Cement				5,730.0		7,649.0
Dump Bail				6,570.0		6,610.0
Cement Plug				500.0		750.0
Cement Plug				9.0		105.0
Tubing Components						
Item Des		OD (in)	Wt (lb/ft)	Grade	Jts	Len (ft)
Perforation Data						
Linked Zone		Bnch/Stg	Sum of Entered Shot Total	Top (ftKB)		Btm (ftKB)
						Date
J SAND, ORIGINAL HOLE			50	7,530.00		7,578.00
Total (Sum)			50			2/5/1982
Other In Hole						
Run Date		Des			OD (in)	Top (ftKB)
						Btm (ftKB)
7/20/1988		Cast Iron Bridge Plug			4 1/2	6,610.0
						6,615.0
Logs						
Date		Type			Top, MD (ftKB)	
					Btm, MD (ftKB)	
Stimulation Intervals						
Bnch/Stg	Start Date		Primary Job Type			
	2/10/1982		DRILLING - ORIGINAL			
Comment						
Volume Slurry Total (gal) 0.00						
Treat Pressure Avg (psi)		Treat Pressure Max (psi)		Slurry Rate Avg (bbl/min)		Slurry Rate Max (bbl/min)