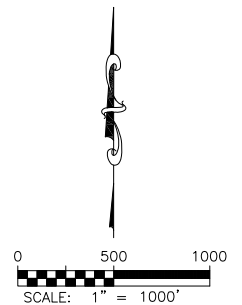
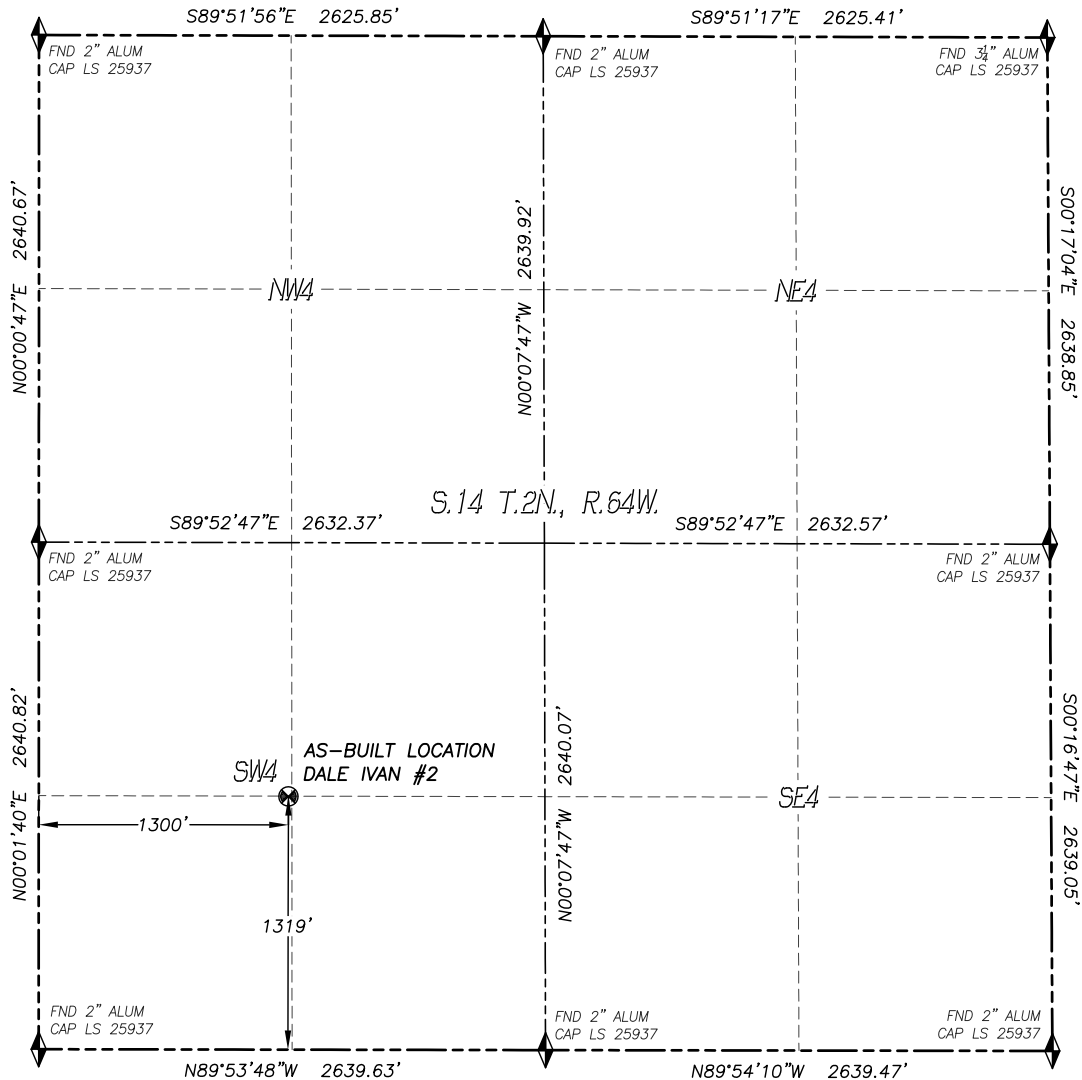


DALEY LAND SURVEYING, INC. 970.302.4159

WELL AS-BUILT SURVEY

DALE IVAN #2

SECTION: 14
TOWNSHIP: 2N
RANGE: 64W



LEGEND

- FOUND MONUMENT AS DESCRIBED
- PROPOSED WELL
- EXISTING WELL
- BOTTOM HOLE
- ABANDONED WELL
- CALCULATED POSITION

IN ACCORDANCE WITH A REQUEST FROM CODY BALL OF NOBLE ENERGY INC., DALEY LAND SURVEYING, INC. HAS DETERMINED THE SURFACE LOCATION OF THE DALE IVAN #2 WELL TO BE 1319' FSL, 1300' FWL, AS MEASURED AT NINETY (90) DEGREES FROM THE SECTION LINES OF SECTION 14, TOWNSHIP 2 NORTH, RANGE 64 WEST, OF THE 6TH PRINCIPAL MERIDIAN, WELD COUNTY, COLORADO.

I HEREBY STATE THAT THIS WELL AS-BUILT SURVEY WAS PREPARED BY ME OR UNDER MY DIRECT SUPERVISION, THAT THE WORK WAS COMPLETED ON 5/22/2017 FOR AND ON BEHALF OF NOBLE ENERGY, INC., AND THAT THIS MAP DOES NOT REPRESENT A BOUNDARY SURVEY, IT IS NOT A LAND SURVEY PLAT OR AN IMPROVEMENT SURVEY PLAT AND IT IS NOT TO BE RELIED UPON FOR THE ESTABLISHMENT OF FENCE, BUILDING OR OTHER FUTURE IMPROVEMENT LINES.

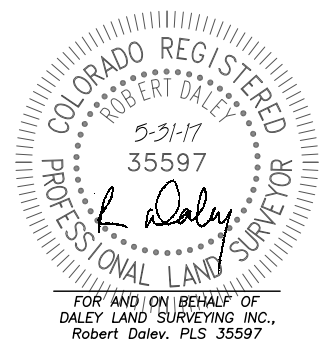
NOTES:

- 1) BEARINGS FOR THIS MAP ARE ASSUMED AND BASED UPON GPS OBSERVATIONS MADE BETWEEN MONUMENTS LOCATED AT THE SOUTHWEST CORNER AND WEST QUARTER CORNER OF SECTION 14, T.2N., R.64W.
- 2) HORIZONTAL DATUM IS NAD83.
- 3) VERTICAL DATUM IS NAVD88 AND ORIGINATES FROM THE LOCAL C.O.R.S. NETWORK, UTILIZING THE GEOID12A MODEL.
- 4) SURFACE USE: PASTURE.
- 5) INST. OPERATOR: KYLE DALEY.
- 6) NO EXCAVATION WAS DONE TO VERIFY LOCATION AS DETERMINED BY VISUAL INSPECTION AND METAL LOCATOR.

NAD 83 LATITUDE AND LONGITUDE

SURFACE LOCATION:

LATITUDE: N40.13476°
LONGITUDE: W104.52340°
ELEV: 4970'
PDOP: 1.5
QTR/QTR: SW4/SW4



DALEY LAND SURVEYING, INC. 970.302.4159

LOCATION PICTURES

DALE IVAN #2

SECTION: 14
TOWNSHIP: 2N
RANGE: 64W

DATE: 5/22/17



LOOKING NORTH



LOOKING WEST



LOOKING EAST



LOOKING SOUTH