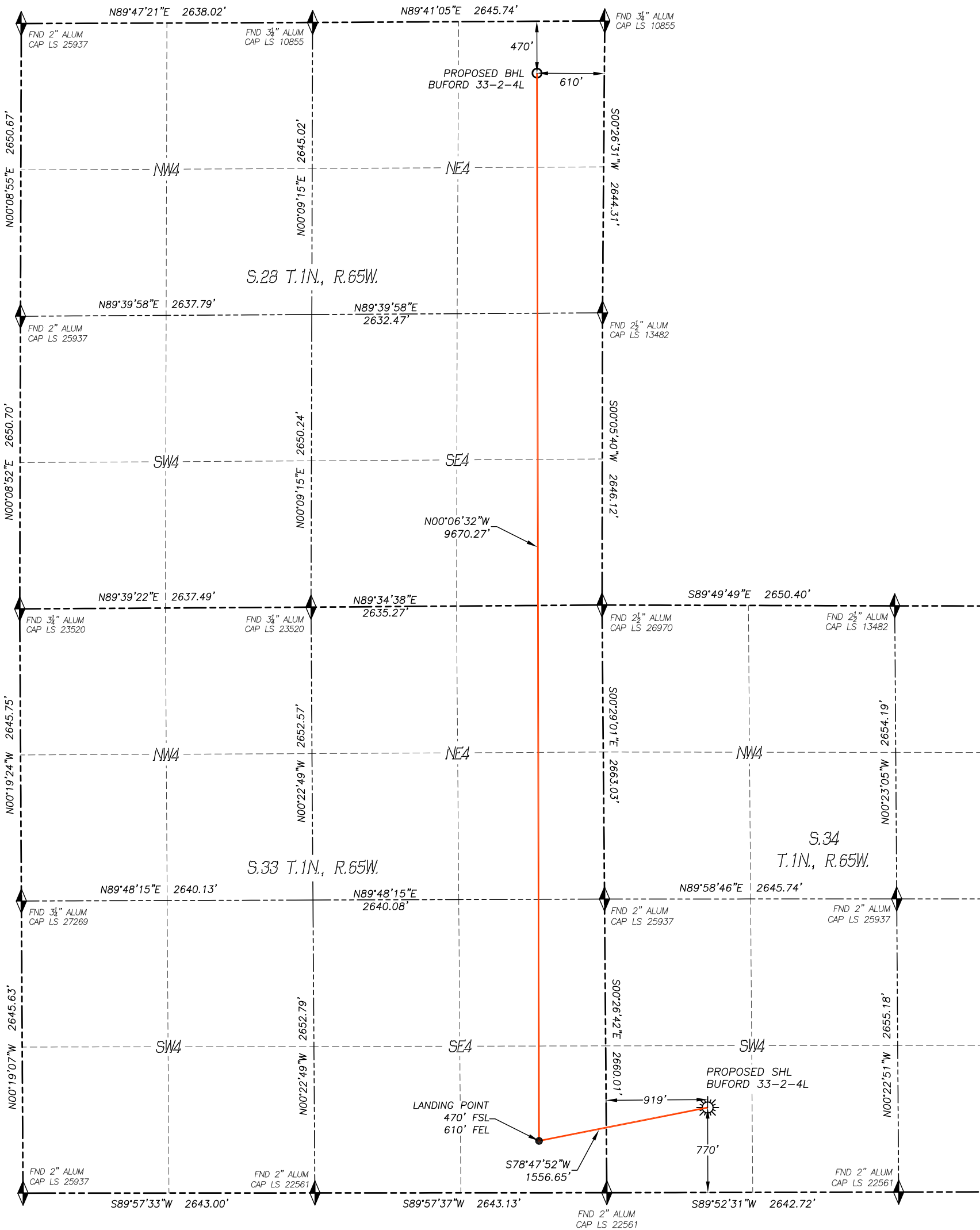


WELL LOCATION CERTIFICATE
BUFORD 33-2-4L

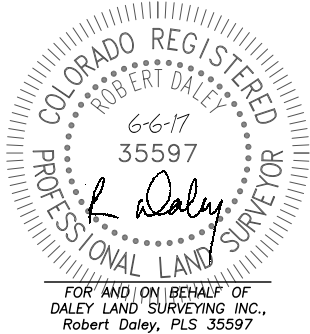
SECTION: 34
TOWNSHIP: 1N
RANGE: 65W



IN ACCORDANCE WITH A REQUEST FROM CONFLUENCE RESOURCES, DALEY LAND SURVEYING, INC. HAS DETERMINED THE SURFACE LOCATION OF THE BUFORD 33-2-4L WELL TO BE 770' FSL, 919' FWL, AS MEASURED AT NINETY (90) DEGREES FROM THE SECTION LINES OF SECTION 34, TOWNSHIP 1 NORTH, RANGE 65 WEST AND THE BOTTOM HOLE LOCATION TO BE 470' FNL, 610' FEL, AS MEASURED AT NINETY (90) DEGREES FROM THE SECTION LINES OF SECTION 28, TOWNSHIP 1 NORTH, RANGE 65 WEST, OF THE 6TH PRINCIPAL MERIDIAN, WELD COUNTY, COLORADO.

I HEREBY STATE THAT THIS WELL LOCATION CERTIFICATE WAS PREPARED BY ME OR UNDER MY DIRECT SUPERVISION, THAT THE WORK WAS COMPLETED ON 5/30/2017 FOR AND ON BEHALF OF CONFLUENCE RESOURCES, AND THAT THIS MAP DOES NOT REPRESENT A BOUNDARY SURVEY, IT IS NOT A LAND SURVEY PLAT OR AN IMPROVEMENT SURVEY PLAT AND IT IS NOT TO BE RELIED UPON FOR THE ESTABLISHMENT OF FENCE, BUILDING OR OTHER FUTURE IMPROVEMENT LINES.

- NOTES:**
- 1) BEARINGS FOR THIS MAP ARE ASSUMED AND BASED UPON GPS OBSERVATIONS MADE BETWEEN MONUMENTS LOCATED AT THE SOUTHWEST CORNER AND THE WEST QUARTER CORNER OF SECTION 34, T.1N., R.65W.
 - 2) HORIZONTAL DATUM IS NAD83.
 - 3) VERTICAL DATUM IS NAVD88 AND ORIGINATES FROM THE LOCAL C.O.R.S. NETWORK, UTILIZING THE GEOID12A MODEL.
 - 4) SEE LOCATION DRAWING FOR VISIBLE IMPROVEMENTS WITHIN 500' OF PROPOSED DISTURBED AREA.
 - 5) SURFACE USE: AGRICULTURAL.
 - 6) INST. OPERATOR: KYLE DALEY



NEAREST CULTURAL ITEMS:

BUILDING:	1046'± SW
BUILDING UNIT:	1216'± SE
HIGH OCC. BLD. UNIT:	5280'+
DES. OUTSIDE ACTIVITY AREA:	5280'+
PUBLIC ROAD:	754'± S
ABOVE GROUND UTILITY:	1201'± SW
RAILROAD:	5280'+
PROPERTY LINE:	402'± E

NAD 83 LATITUDE AND LONGITUDE

SURFACE LOCATION:	LANDING POINT/TPZ:
LATITUDE: N40.00266°	LATITUDE: N40.00183°
LONGITUDE: W104.65627°	LONGITUDE: W104.66172°
ELEV: 5137'	
PDOP: 1.4	
QTR/QTR: SW4/SW4	
BOTTOM HOLE:	
LATITUDE: N40.02837°	
LONGITUDE: W104.66178°	

- LEGEND**
- FOUND MONUMENT
 - CALCULATED POSITION
 - PROPOSED WELL
 - BOTTOM HOLE
 - ABANDONED WELL
 - EXISTING WELL

