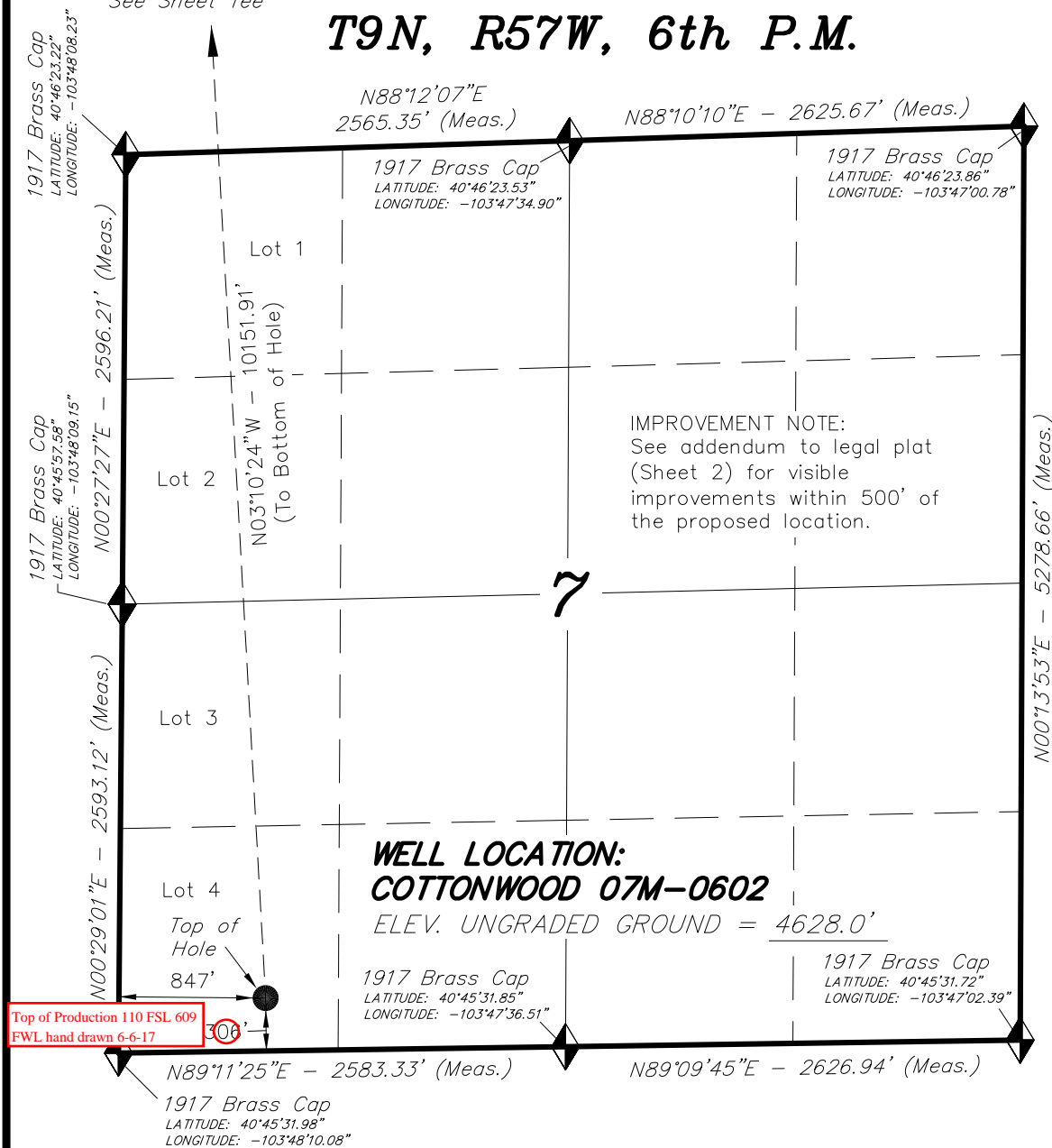


See Sheet 1ee

T9N, R57W, 6th P.M.



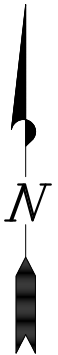
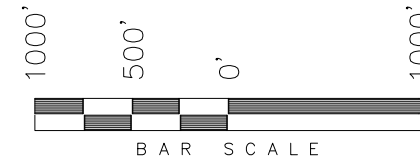
Top of Production 110 FSL 609
FWL hand drawn 6-6-17

BASIS OF ELEV; Elevations are based on an N.G.S. OPUS Correction. LOCATION: LAT. 40°46'03.41" LONG. 103°46'26.97" (Tristate Aluminum Cap) NAVD 88 Elev. 4750.22'

| NAD 83 (SURFACE LOCATION) | |
|---------------------------|-------------------------------|
| LATITUDE | = 40°45'34.95" (40.759709°) |
| LONGITUDE | = 103°47'58.96" (103.799710°) |
| NAD 27 (SURFACE LOCATION) | |
| LATITUDE | = 40°45'35.00" (40.759722°) |
| LONGITUDE | = 103°47'57.14" (103.799207°) |

WHITING OIL & GAS CORP.

WELL LOCATION, COTTONWOOD 07M-0602 LOCATED AS SHOWN IN THE SW 1/4 SW 1/4 (LOT 4) OF SECTION 7, T9N, R57W, 6th P.M. WELD COUNTY, COLORADO.



NOTES:

1. Well footages are measured at right angles to the Section Lines.
2. G.P.S. Operator: G. Olsen, (PDOP) = 1.3

◆ = SECTION CORNERS LOCATED

THIS IS TO CERTIFY THAT THE ABOVE PLAT WAS PREPARED FROM FIELD NOTES OF REAL SURVEYS MADE BY ME OR UNDER MY SUPERVISION. THE LOCATION HAS BEEN STAKED ON THE GROUND AS SHOWN ON THE PLAT AND THAT THE SAME ARE TRUE AND CORRECT TO THE BEST OF MY KNOWLEDGE AND BELIEF.

06-24-15
30125
REGISTERED LAND SURVEYOR
REGISTRATION NO. 30125
STATE OF COLORADO
LAND SURVEYOR

TRI STATE LAND SURVEYING & CONSULTING

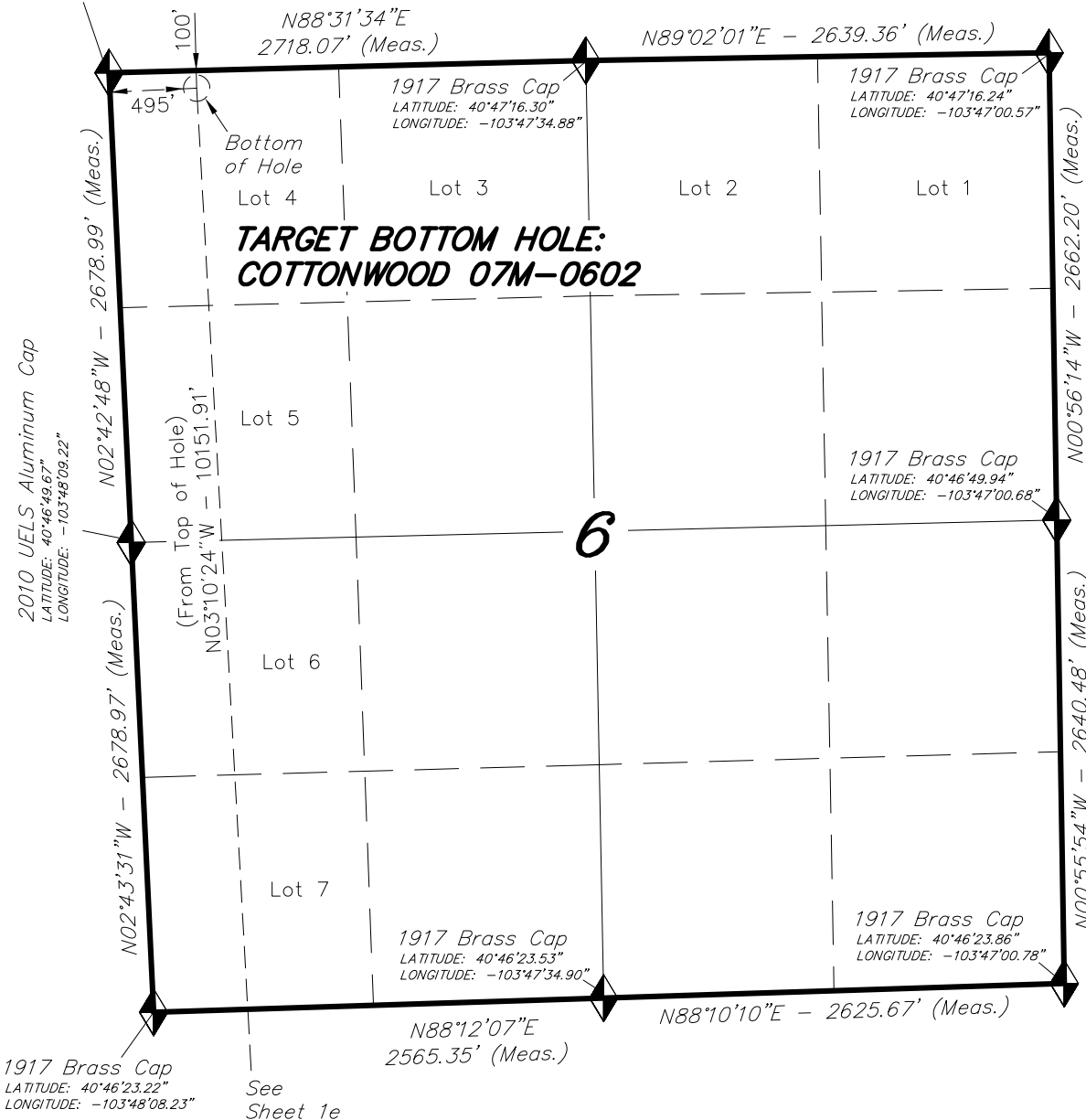
180 NORTH VERNAL AVE. - VERNAL, UTAH 84078
(435) 781-2501

| | | |
|-----------------------------|---------------------|------------------------|
| DATE SURVEYED: 02-09-15 | SURVEYED BY: G.D.O. | SHEET 1e |
| DATE DRAWN: 02-25-15 | DRAWN BY: F.T.M. | |
| REVISED: 06-24-15 F.T.M. | SCALE: 1" = 1000' | |

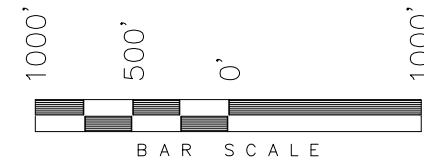
2010 Private
Aluminum Cap
LATITUDE: 40°47'16.13"
LONGITUDE: -103°48'10.20"

T9N, R57W, 6th P.M.

WHITING OIL & GAS CORP.



TARGET BOTTOM HOLE, COTTONWOOD 07M-0602, LOCATED AS SHOWN IN THE NW 1/4 NW 1/4 (LOT 4) OF SECTION 6, T9N, R57W, 6th P.M. WELD COUNTY, COLORADO.



NOTES:

1. Bearings are based on Global Positioning Satellite observations.

◆ = SECTION CORNERS LOCATED

THIS IS TO CERTIFY THAT THE ABOVE PLAT WAS PREPARED FROM FIELD NOTES OF REAL SURVEYS MADE BY ME OR UNDER MY SUPERVISION. THE LOCATION HAS BEEN STAKED ON THE GROUND AS SHOWN ON THE PLAT, AND THAT THE SAME ARE TRUE AND CORRECT TO THE BEST OF MY KNOWLEDGE AND BELIEF.

07-06-15
30125

REGISTERED LAND SURVEYOR
REGISTRATION NO. 30125
STATE OF COLORADO

TRI STATE LAND SURVEYING & CONSULTING

180 NORTH VERNAL AVE. - VERNAL, UTAH 84078
(435) 781-2501

| | | |
|-----------------------------|---------------------|------------------|
| DATE SURVEYED: 02-09-15 | SURVEYED BY: G.D.O. | SHEET 1ee |
| DATE DRAWN: 02-25-15 | DRAWN BY: M.W. | |
| REVISED: 07-06-15 F.T.M. | SCALE: 1" = 1000' | |

| NAD 83 (BOTTOM HOLE LOCATION) | |
|-------------------------------|-----------------------------|
| LATITUDE = | 40°47'15.17" (40.787548°) |
| LONGITUDE = | 103°48'03.73" (103.801037°) |
| NAD 27 (BOTTOM HOLE LOCATION) | |
| LATITUDE = | 40°47'15.22" (40.787562°) |
| LONGITUDE = | 103°48'01.92" (103.800534°) |

BASIS OF ELEV; Elevations are based on an N.G.S. OPUS Correction. LOCATION:
LAT. 40°46'03.41" LONG. 103°46'26.97"
(Tristate Aluminum Cap) NAVD 88 Elev. 4750.22'