

123 26111

01839588

RECEIVED
JUL 07 2008
COGCC

BAKER
HUGHES
INTEQ

KerrMcGee

KERR MCGEE

Location: COLORADO

Field: WELD COUNTY (KERR MCGEE)

Facility: SEC 34-T3N-R68W

Slot: Slot #3 St Vrain 5-34 1564'FNL & 1173'FWL

Well: St Vrain 5-34

Wellbore: St Vrain 5-34 PWB

Plot reference wellpath is St Vrain 5-34 PWB

True vertical depths are referenced to Xtreme 11 (RT)

Measured depths are referenced to Xtreme 11 (RT)

Xtreme 11 (RT) to Mean Sea Level: 4940 feet

Mean Sea Level to Mud line (Facility: SEC 34-T3N-R68W): 0 feet

Coordinates are in feet referenced to Slot

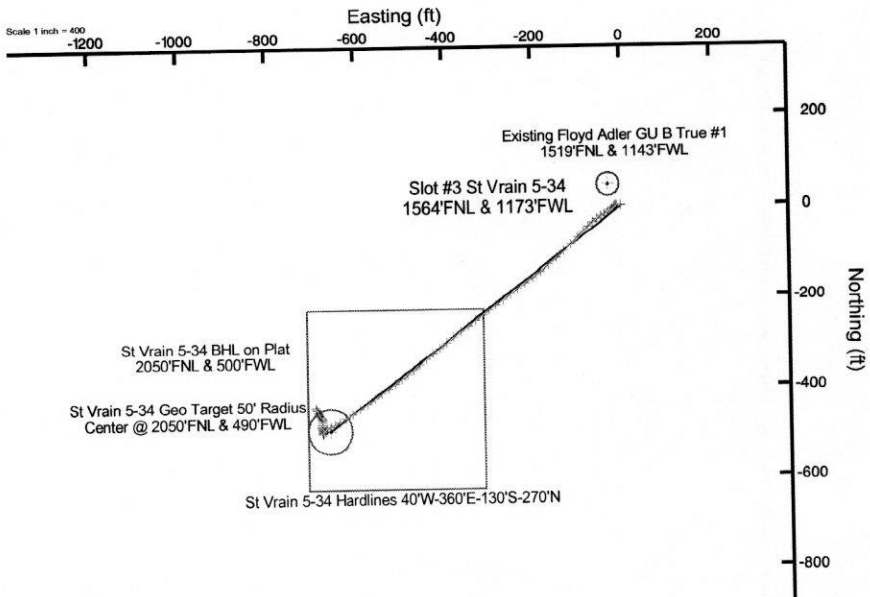
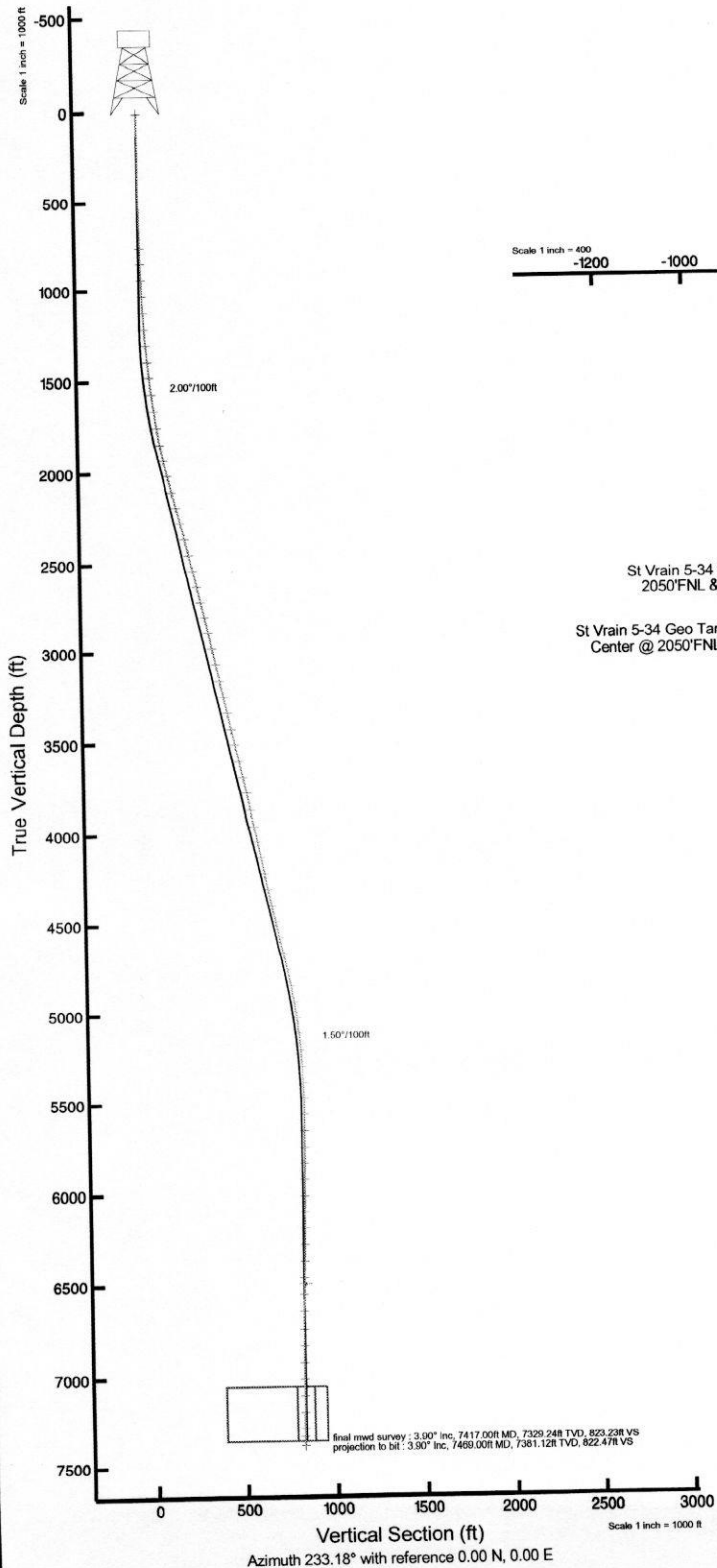
Grid System: NAD83 / Lambert Colorado State Planes, Northern Zone (501), US feet

North Reference: True north

Scale: True distance

Depths are in feet

Created by: Suzanne Thompson on 1/17/2008



St Vrain 5-34 BHL on Plat
2050'FNL & 500'FWL

St Vrain 5-34 Geo Target 50' Radius
Center @ 2050'FNL & 490'FWL

Existing Floyd Adler GU B True #1
1519'FNL & 1143'FWL

Slot #3 St Vrain 5-34
1564'FNL & 1173'FWL

St Vrain 5-34 Hardlines 40°W-360°E-130°S-270°N

final mud survey : 3.00° inc, 7417.00ft MD, 7329.24ft TVD, 823.23ft VS
projection to bit : 3.90° inc, 7469.00ft MD, 7381.12ft TVD, 822.47ft VS

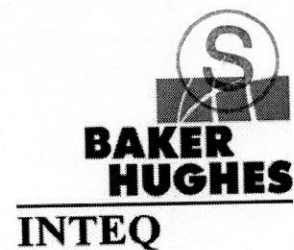


BOCM (1945 0 to 2008 0) Dip: 68.58° Field: 53364.5 ft
Magnetic North is 9.45 degrees East of True North (at 12/25/2007)
To correct azimuth from Magnetic to True add 9.45 degrees
For example: if the Magnetic North Azimuth = 90 degrees, then the Grid North Azimuth = 90 + 9.45 = 99.45



Actual Wellpath Report

St Vrain 5-34 AWP
Page 1 of 5



REFERENCE WELLPATH IDENTIFICATION

Operator	KERR MCGEE	Slot	Slot #3 St Vrain 5-34 1564'FNL & 1173'FWL
Area	COLORADO	Well	St Vrain 5-34
Field	WELD COUNTY (KERR MCGEE)	Wellbore	St Vrain 5-34 AWB
Facility	SEC.34-T3N-R68W		

REPORT SETUP INFORMATION

Projection System	NAD83 / Lambert Colorado State Planes, Northern Zone (501), US feet	Software System	WellArchitect® 2.0
North Reference	True	User	Suzanne Thompson
Scale	0.999957	Report Generated	1/17/2008 at 12:19:50 PM
Convergence at slot	0.33° East	Database/Source file	WA_Denver/St_Vrain_5-34_AWB.xml

WELLPATH LOCATION

	Local coordinates		Grid coordinates		Geographic coordinates	
	North[ft]	East[ft]	Easting[USft]	Northing[USft]	Latitude	Longitude
Slot Location	0.00	-61.47	3141327.05	1310754.24	40°11'07.116"N	104°59'38.976"W
Facility Reference Pt			3141388.52	1310754.59	40°11'07.116"N	104°59'38.184"W
Field Reference Pt			3197771.84	1268891.29	40°04'09.600"N	104°47'36.000"W

WELLPATH DATUM

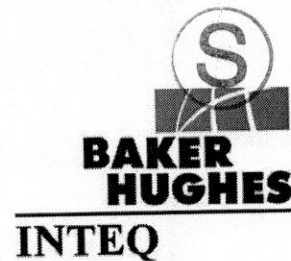
Calculation method	Minimum curvature	Xtreme 11 (RT) to Facility Vertical Datum	4940.00ft
Horizontal Reference Pt	Slot	Xtreme 11 (RT) to Mean Sea Level	4940.00ft
Vertical Reference Pt	Xtreme 11 (RT)	Facility Vertical Datum to Mud Line (Facility)	0.00ft
MD Reference Pt	Xtreme 11 (RT)	Section Origin	N 0.00, E 0.00 ft
Field Vertical Reference	Mean Sea Level	Section Azimuth	233.18°



Actual Wellpath Report

St Vrain 5-34 AWP

Page 2 of 5



REFERENCE WELLPATH IDENTIFICATION			
Operator	KERR MCGEE	Slot	Slot #3 St Vrain 5-34 1564'FNL & 1173'FWL
Area	COLORADO	Well	St Vrain 5-34
Field	WELD COUNTY (KERR MCGEE)	Wellbore	St Vrain 5-34 AWP
Facility	SEC.34-T3N-R68W		

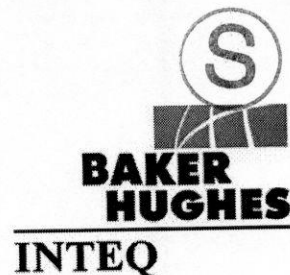
WELLPATH DATA (78 stations) † = interpolated/extrapolated station									
MD [ft]	Inclination [°]	Azimuth [°]	TVD [ft]	Vert Sect [ft]	North [ft]	East [ft]	Latitude	Longitude	DLS [°/100ft]
0.00†	0.000	264.500	0.00	0.00	0.00	0.00	40°11'07.116"N	104°59'38.976"W	0.00
11.00	0.000	264.500	11.00	0.00	0.00	0.00	40°11'07.116"N	104°59'38.976"W	0.00
762.00	1.300	264.500	761.94	7.28	-0.82	-8.48	40°11'07.108"N	104°59'39.085"W	0.17
852.00	1.500	255.900	851.91	9.24	-1.20	-10.64	40°11'07.104"N	104°59'39.113"W	0.32
943.00	1.800	234.100	942.87	11.76	-2.33	-12.95	40°11'07.093"N	104°59'39.143"W	0.76
1034.00	2.300	223.600	1033.81	14.99	-4.49	-15.37	40°11'07.072"N	104°59'39.174"W	0.69
1125.00	3.000	232.700	1124.72	19.18	-7.26	-18.52	40°11'07.044"N	104°59'39.215"W	0.90
1215.00	3.500	235.200	1214.57	24.28	-10.25	-22.65	40°11'07.015"N	104°59'39.268"W	0.58
1305.00	5.400	242.200	1304.30	31.21	-13.79	-28.65	40°11'06.980"N	104°59'39.345"W	2.19
1396.00	5.500	242.900	1394.88	39.73	-17.78	-36.32	40°11'06.940"N	104°59'39.444"W	0.13
1486.00	6.200	240.600	1484.42	48.80	-22.13	-44.40	40°11'06.897"N	104°59'39.548"W	0.82
1576.00	7.500	236.200	1573.77	59.49	-27.78	-53.51	40°11'06.841"N	104°59'39.665"W	1.56
1666.00	8.100	232.700	1662.94	71.69	-34.89	-63.44	40°11'06.771"N	104°59'39.793"W	0.85
1757.00	9.600	223.600	1752.86	85.59	-44.27	-73.77	40°11'06.678"N	104°59'39.927"W	2.25
1847.00	10.700	223.200	1841.45	101.22	-55.80	-84.67	40°11'06.565"N	104°59'40.067"W	1.22
1937.00	13.000	224.600	1929.52	119.46	-69.10	-97.50	40°11'06.433"N	104°59'40.232"W	2.58
2028.00	14.400	227.100	2017.93	140.83	-84.09	-112.97	40°11'06.285"N	104°59'40.432"W	1.67
2118.00	14.900	227.800	2105.01	163.48	-99.48	-129.74	40°11'06.133"N	104°59'40.648"W	0.59
2209.00	14.600	227.100	2193.01	186.53	-115.15	-146.81	40°11'05.978"N	104°59'40.868"W	0.38
2299.00	14.800	233.100	2280.07	209.31	-129.77	-164.31	40°11'05.834"N	104°59'41.093"W	1.71
2390.00	14.400	231.700	2368.13	232.24	-143.76	-182.49	40°11'05.695"N	104°59'41.327"W	0.59
2480.00	14.200	235.200	2455.34	254.46	-157.00	-200.34	40°11'05.565"N	104°59'41.557"W	0.99
2570.00	13.500	233.800	2542.73	276.00	-169.50	-217.88	40°11'05.441"N	104°59'41.783"W	0.86
2661.00	12.700	232.700	2631.36	296.62	-181.84	-234.41	40°11'05.319"N	104°59'41.996"W	0.92
2751.00	13.300	234.800	2719.05	316.86	-193.80	-250.74	40°11'05.201"N	104°59'42.207"W	0.85
2842.00	13.000	233.800	2807.66	337.56	-205.88	-267.55	40°11'05.081"N	104°59'42.423"W	0.41
2933.00	12.500	233.400	2896.42	357.65	-217.80	-283.71	40°11'04.964"N	104°59'42.631"W	0.56
3023.00	12.000	232.700	2984.37	376.74	-229.27	-298.98	40°11'04.850"N	104°59'42.828"W	0.58
3114.00	12.300	235.200	3073.33	395.89	-240.54	-314.46	40°11'04.739"N	104°59'43.028"W	0.67
3205.00	12.700	235.500	3162.18	415.57	-251.74	-330.66	40°11'04.628"N	104°59'43.236"W	0.45
3295.00	13.100	234.500	3249.90	435.65	-263.26	-347.12	40°11'04.514"N	104°59'43.448"W	0.51
3386.00	12.700	235.900	3338.61	455.95	-274.86	-363.80	40°11'04.400"N	104°59'43.663"W	0.56
3476.00	13.000	234.100	3426.35	475.96	-286.34	-380.19	40°11'04.286"N	104°59'43.875"W	0.56
3566.00	12.600	234.100	3514.12	495.89	-298.03	-396.34	40°11'04.171"N	104°59'44.083"W	0.44
3657.00	12.700	231.700	3602.91	515.82	-310.05	-412.23	40°11'04.052"N	104°59'44.287"W	0.59
3748.00	12.800	230.600	3691.66	535.89	-322.65	-427.87	40°11'03.928"N	104°59'44.489"W	0.29
3839.00	12.700	229.900	3780.42	555.94	-335.49	-443.31	40°11'03.801"N	104°59'44.688"W	0.20
3929.00	12.100	229.600	3868.32	575.24	-347.98	-458.07	40°11'03.677"N	104°59'44.878"W	0.67
4020.00	10.800	230.300	3957.51	593.27	-359.61	-471.89	40°11'03.562"N	104°59'45.056"W	1.44
4110.00	10.700	234.800	4045.93	610.04	-369.81	-485.20	40°11'03.462"N	104°59'45.228"W	0.94
4201.00	11.100	234.800	4135.29	627.24	-379.73	-499.27	40°11'03.363"N	104°59'45.409"W	0.44
4291.00	11.500	233.400	4223.54	644.88	-390.07	-513.55	40°11'03.261"N	104°59'45.593"W	0.54
4382.00	12.700	234.100	4312.52	663.95	-401.34	-528.93	40°11'03.150"N	104°59'45.791"W	1.33
4473.00	12.300	235.900	4401.36	683.63	-412.64	-545.06	40°11'03.038"N	104°59'45.999"W	0.61
4563.00	12.800	233.800	4489.21	703.18	-423.91	-561.05	40°11'02.927"N	104°59'46.205"W	0.75



Actual Wellpath Report

St Vrain 5-34 AWP

Page 3 of 5



REFERENCE WELLPATH IDENTIFICATION			
Operator	KERR MCGEE	Slot	Slot #3 St Vrain 5-34 1564'FNL & 1173'FWL
Area	COLORADO	Well	St Vrain 5-34
Field	WELD COUNTY (KERR MCGEE)	Wellbore	St Vrain 5-34 AWP
Facility	SEC.34-T3N-R68W		

WELLPATH DATA (78 stations) † = interpolated/extrapolated station									
MD [ft]	Inclination [°]	Azimuth [°]	TVD [ft]	Vert Sect [ft]	North [ft]	East [ft]	Latitude	Longitude	DLS [°/100ft]
4654.00	12.900	233.400	4577.93	723.42	-435.92	-577.34	40°11'02.808"N	104°59'46.415"W	0.15
4745.00	13.500	236.200	4666.53	744.18	-447.88	-594.32	40°11'02.690"N	104°59'46.633"W	0.96
4836.00	12.400	238.300	4755.21	764.52	-458.93	-611.46	40°11'02.581"N	104°59'46.854"W	1.31
4927.00	11.200	240.100	4844.29	783.03	-468.47	-627.43	40°11'02.487"N	104°59'47.060"W	1.38
5017.00	8.900	239.000	4932.90	798.63	-476.41	-640.98	40°11'02.408"N	104°59'47.235"W	2.56
5108.00	7.400	246.400	5022.98	811.34	-482.38	-652.38	40°11'02.349"N	104°59'47.381"W	2.01
5198.00	6.100	249.600	5112.36	821.57	-486.37	-662.18	40°11'02.310"N	104°59'47.508"W	1.50
5289.00	5.500	235.900	5202.90	830.56	-490.50	-670.32	40°11'02.269"N	104°59'47.613"W	1.65
5380.00	4.400	212.300	5293.57	838.18	-495.90	-675.80	40°11'02.215"N	104°59'47.683"W	2.52
5470.00	2.400	207.100	5383.40	843.10	-500.49	-678.50	40°11'02.170"N	104°59'47.718"W	2.25
5561.00	0.200	226.400	5474.37	844.97	-502.30	-679.48	40°11'02.152"N	104°59'47.731"W	2.43
5651.00	0.700	329.700	5564.37	845.06	-501.93	-679.88	40°11'02.156"N	104°59'47.736"W	0.86
5742.00	1.500	341.400	5655.35	844.63	-500.32	-680.54	40°11'02.172"N	104°59'47.744"W	0.91
5832.00	1.200	17.900	5745.33	843.49	-498.31	-680.62	40°11'02.192"N	104°59'47.745"W	0.99
5923.00	1.700	10.500	5836.30	841.72	-496.08	-680.08	40°11'02.214"N	104°59'47.738"W	0.59
6013.00	1.500	344.900	5926.27	840.30	-493.63	-680.15	40°11'02.238"N	104°59'47.739"W	0.82
6103.00	0.800	318.500	6016.25	839.92	-492.02	-680.87	40°11'02.254"N	104°59'47.749"W	0.96
6194.00	1.300	323.800	6107.23	839.96	-490.71	-681.90	40°11'02.267"N	104°59'47.762"W	0.56
6284.00	1.200	348.700	6197.21	839.54	-488.96	-682.69	40°11'02.284"N	104°59'47.772"W	0.61
6375.00	2.400	6.300	6288.17	837.83	-486.13	-682.67	40°11'02.312"N	104°59'47.772"W	1.44
6465.00	3.000	7.400	6378.07	834.90	-481.92	-682.16	40°11'02.354"N	104°59'47.765"W	0.67
6556.00	3.300	14.700	6468.93	831.19	-477.03	-681.18	40°11'02.402"N	104°59'47.753"W	0.55
6646.00	2.100	6.700	6558.83	828.03	-472.89	-680.33	40°11'02.443"N	104°59'47.742"W	1.39
6737.00	1.500	349.100	6649.78	826.36	-470.06	-680.36	40°11'02.471"N	104°59'47.742"W	0.89
6828.00	2.000	325.500	6740.74	825.77	-467.58	-681.49	40°11'02.495"N	104°59'47.757"W	0.95
6919.00	1.900	325.900	6831.69	825.64	-465.02	-683.23	40°11'02.521"N	104°59'47.779"W	0.11
7010.00	2.300	328.300	6922.63	825.40	-462.22	-685.04	40°11'02.548"N	104°59'47.802"W	0.45
7100.00	1.900	323.800	7012.57	825.22	-459.48	-686.87	40°11'02.575"N	104°59'47.826"W	0.48
7190.00	1.800	331.500	7102.52	825.00	-457.03	-688.43	40°11'02.599"N	104°59'47.846"W	0.30
7281.00	2.600	329.700	7193.45	824.56	-454.00	-690.15	40°11'02.630"N	104°59'47.868"W	0.88
7371.00	3.400	334.000	7283.33	823.83	-449.84	-692.35	40°11'02.671"N	104°59'47.896"W	0.92
7417.00	3.900	335.700	7329.24	823.23	-447.18	-693.59	40°11'02.697"N	104°59'47.912"W	1.11
7469.00†	3.900	335.700	7381.12	822.47	-443.96	-695.05	40°11'02.729"N	104°59'47.931"W	0.00