

HALLIBURTON

iCem[®] Service

TERRA ENERGY LTD.

For: Terra

Date: Wednesday, April 19, 2017

TR 413-21-597 Production

API#05-045-23344-00

Sincerely,
Grand Junction Cement Engineering

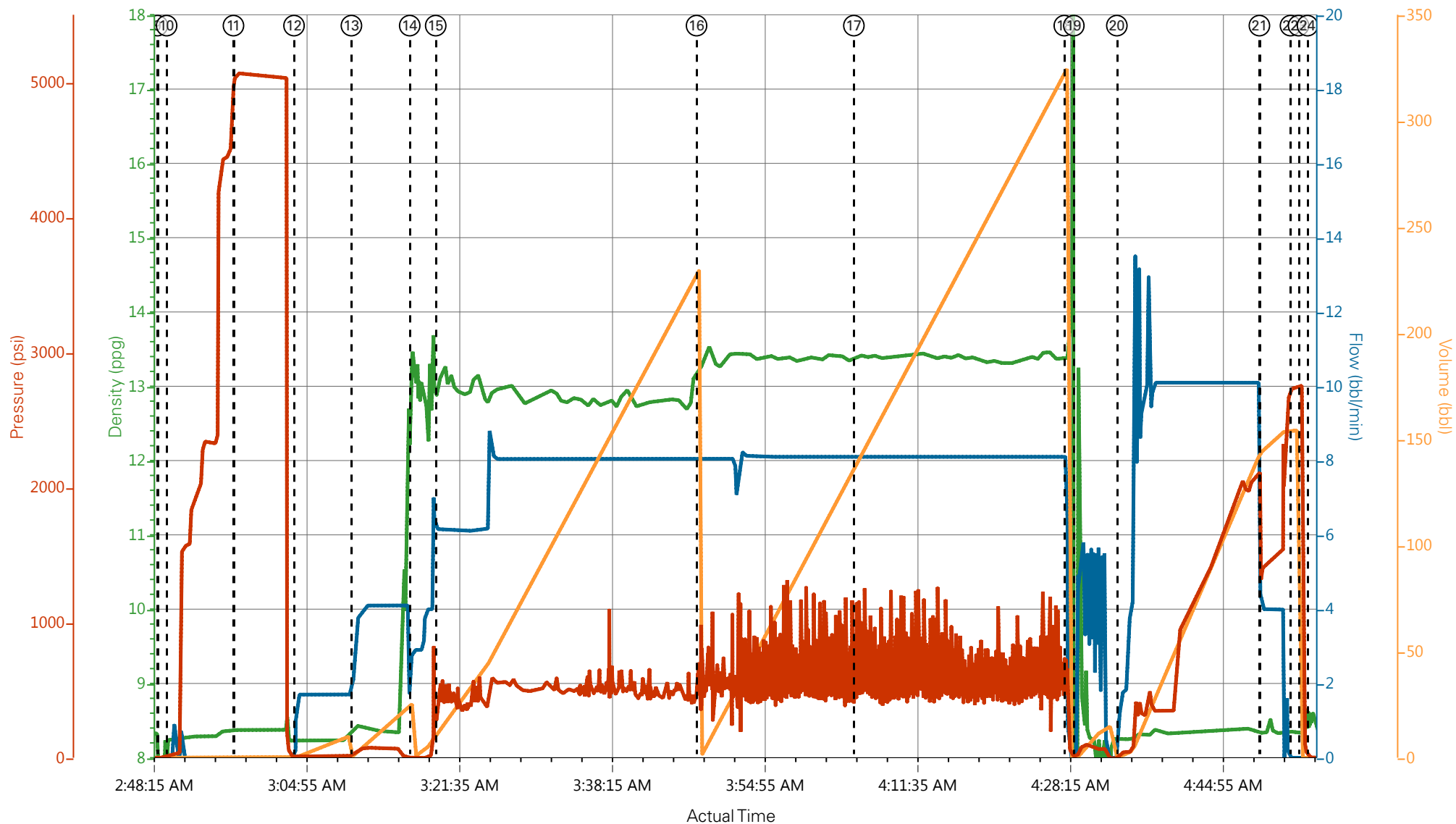
1.0 Real-Time Job Summary

1.1 Job Event Log

| Type | Seq. No. | Graph Label | Date | Time | Source | Pass-Side Pump Pressure (psi) | Downhole Density (ppg) | Combined Pump Rate (bbl/min) | Pump Stage Total (bbl) | Comments |
|-------|----------|---------------------------------------|-----------|----------|--------|----------------------------------|---------------------------|---------------------------------|---------------------------|--|
| Event | 1 | Call Out | 4/18/2017 | 17:00:00 | USER | | | | | REQUESTED ON LOCATION @ 0001 |
| Event | 2 | Pre-Convoy Safety Meeting | 4/18/2017 | 19:00:00 | USER | | | | | ALL HES PRESENT |
| Event | 3 | Crew Leave Yard | 4/18/2017 | 19:10:00 | USER | | | | | 1 F550, 1 PUMP TRUCK & 1 660 BULK TURCK |
| Event | 4 | Assessment Of Location Safety Meeting | 4/18/2017 | 22:30:00 | USER | | | | | MET WITH COMP REP, K.PATTERSON, AND WENT OVER NUMBERS AND JOB PROCEDURE. WALKED AROUND LOCATION AND COLLECTED WATER SAMPLE (PH- 7, CHLORIDES- 0, TEMP- 54F). COMP REP WAS OFFERED SDS FOR ALL CHEMICLES USED BY HES. |
| Event | 5 | Arrive At Loc | 4/18/2017 | 23:30:00 | USER | | | | | RIG RUNNING CASING |
| Event | 6 | Pre-Rig Up Safety Meeting | 4/19/2017 | 00:45:00 | USER | | | | | ALL HES PRESENT |
| Event | 7 | Rig-Up Equipment | 4/19/2017 | 01:00:00 | USER | | | | | HES RIGGED UP EQUIPMENT WITHOUT ENTERING RED ZONE. |
| Event | 8 | Pre-Job Safety Meeting | 4/19/2017 | 02:30:00 | USER | | | | | ALL HES AND RIG CREW PRESENT |
| Event | 9 | Start Job | 4/19/2017 | 02:49:00 | COM6 | | | | | TD 9584', TP 9577', SJ 32', OH 8.75'', CSG 4.5'' 11.6#, MUD 8.8 PPG. RIG CIRCULATED WELL FOR APPROX 2 HRS. |
| Event | 10 | Fill Lines | 4/19/2017 | 02:50:00 | USER | 31.00 | 8.24 | 0.00 | 0.0 | 8.33 PPG FRESH WATER |
| Event | 11 | Test Lines | 4/19/2017 | 02:57:17 | COM6 | 5064.00 | 8.37 | 0.00 | 0.4 | ALL LINES HELD PRESSURE AT 5068 PSI |
| Event | 12 | Pump Spacer 1 | 4/19/2017 | 03:03:54 | COM6 | 14.00 | 8.23 | 1.70 | 0.4 | FRESH WATER (10 BBL), 8.33 PPG |
| Event | 13 | Pump Spacer 2 | 4/19/2017 | 03:10:10 | COM6 | 21.00 | 8.44 | 2.70 | 1.2 | MUD FLUSH III (20 BBL), 8.4 PPG |
| Event | 14 | Pump Lead Cement | 4/19/2017 | 03:16:31 | COM6 | 0.00 | 13.34 | 2.90 | 0.0 | NEOCEM CEMENT 550 SKS (190 BBLS), 12.5 PPG, 1.94 FT3/SK, 9.58 GAL/SK |
| Event | 15 | Check weight | 4/19/2017 | 03:19:21 | COM6 | | | | | WEIGHT VERIFIED VIA PRESSUREIZED MUD SCALES |

| | | | | | | | | | | |
|-------|----|--|-----------|----------|------|---------|-------|------|-------|---|
| Event | 16 | Pump Tail Cement | 4/19/2017 | 03:47:49 | COM6 | 524.00 | 13.24 | 8.10 | 230.4 | NEOCER CEMENT 765 SKS (282 BBLS), 13 PPG, 2.07 FT3/SK, 9.43 GAL/SK. AIR ON PARASITE REDUCED TO 600 UNITS. |
| Event | 17 | Post-Job Safety Meeting (Pre Rig-Down) | 4/19/2017 | 04:05:00 | USER | | | | | ALL HES PRESENT |
| Event | 18 | Shutdown | 4/19/2017 | 04:27:57 | USER | | | | | END OF CMT |
| Event | 19 | Clean Lines | 4/19/2017 | 04:29:00 | USER | | | | | WASH UP PUMPS AND LINES |
| Event | 20 | Pump Displacement | 4/19/2017 | 04:33:41 | COM6 | 39.00 | 8.23 | 1.70 | 0.2 | 8.34 PPG KCL WATER (113.9 BBLS) 1 GAL MMCR & 3 BAGS BE6. AIR ON PARASITE SHUT OFF. |
| Event | 21 | Slow Rate | 4/19/2017 | 04:49:15 | USER | 1420.00 | 8.32 | 4.00 | 144.7 | SLOW RATE TO 4 BPM PER CO REP TO LAND PLUG |
| Event | 22 | Bump Plug | 4/19/2017 | 04:52:38 | USER | 2739.00 | 8.35 | 0.00 | 154.2 | LAND PLUG AT 1580 PSI, BROUGHT UP TO 2773 PSI |
| Event | 23 | Check Floats | 4/19/2017 | 04:53:31 | USER | 2648.00 | 8.35 | 0.00 | 0.0 | FLOATS HELD, 1 BBL BACK TO TRUCK |
| Event | 24 | End Job | 4/19/2017 | 04:54:30 | USER | | | | | LAND PLUG AT 1580 PSI, BROUGHT UP TO 2773 PSI |
| Event | 25 | Rig-Down Equipment | 4/19/2017 | 05:10:00 | USER | | | | | ALL HES PRESENT |
| Event | 26 | Pre-Convoy Safety Meeting | 4/19/2017 | 05:55:00 | USER | | | | | ALL HES PRESENT |
| Event | 27 | Crew Leave Location | 4/19/2017 | 06:00:00 | USER | | | | | PIPE WAS RECIPROCATED DURING THE JOB, 0 BBL CEMENT BACK TO SURFACE |

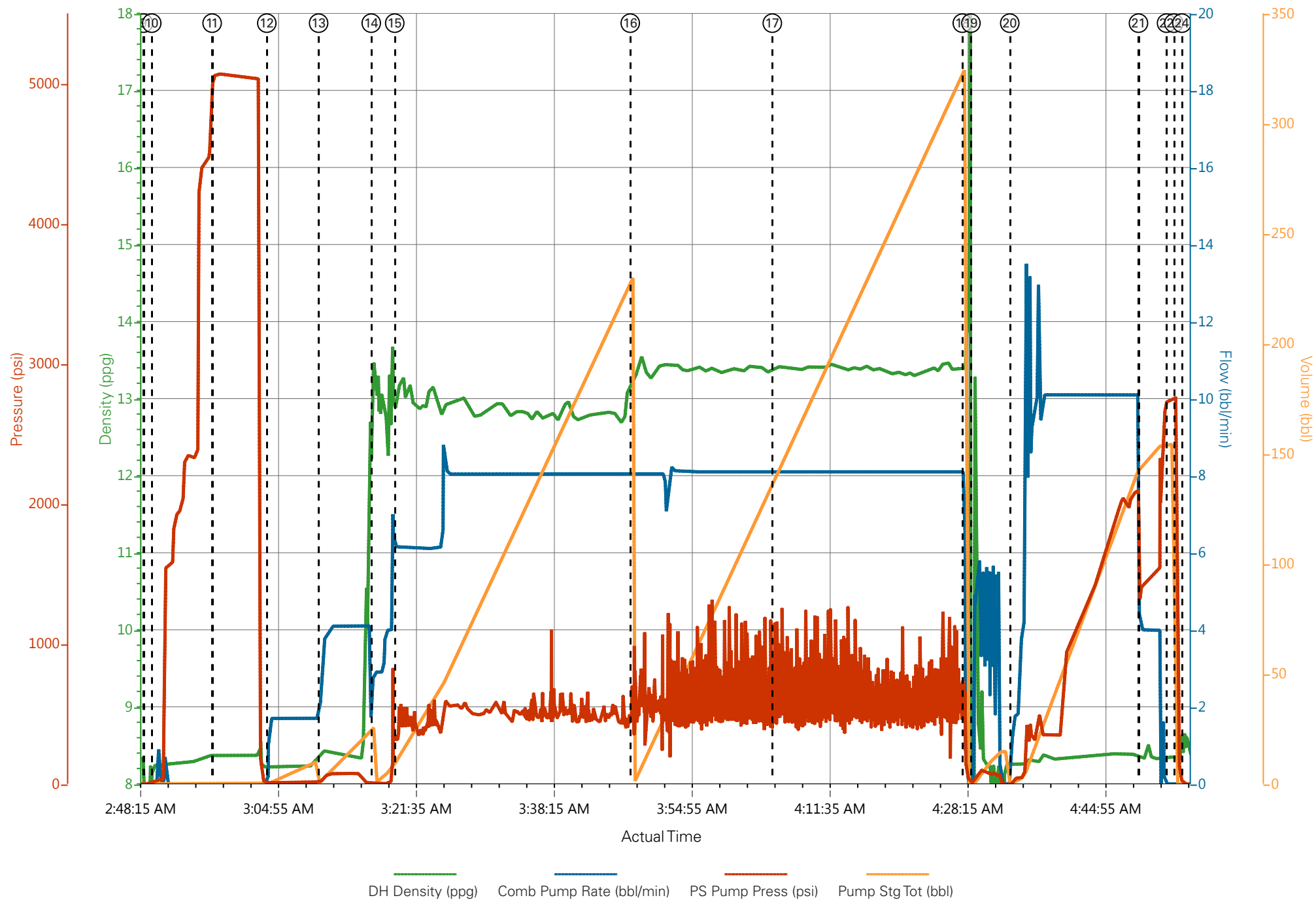
TEP - TR 413-21-597 - 4.5" PRODUCTION



DH Density (ppg) Comb Pump Rate (bbl/min) PS Pump Press (psi) Pump Stg Tot (bbl)

- | | | | | |
|---|---|-------------------------------------|---------------------------------|--------------------------|
| ① Call Out n/a;n/a;n/a;n/a | ④ Assessment Of Location Safety Meeting n/a;n/a;n/a;n/a | ⑦ Rig-Up Equipment 8.76;0;3;24.6 | ⑩ Fill Lines 8.24;0;31;0 | ⑬ Pump Spacer 2 8.44;2.7 |
| ② Pre-Convoy Safety Meeting n/a;n/a;n/a;n/a | ⑤ Arrive At Loc n/a;n/a;n/a;n/a | ⑧ Pre-Job Safety Meeting 8.84;0;2;0 | ⑪ Test Lines 8.37;0;5064;0.4 | ⑭ Pump Lead Cement 13.3 |
| ③ Crew Leave Yard n/a;n/a;n/a;n/a | ⑥ Pre-Rig Up Safety Meeting n/a;n/a;n/a;n/a | ⑨ Start Job 0.36;0;1;0 | ⑫ Pump Spacer 1 8.24;1.7;14;0.4 | ⑮ Check weight 12.99;6.2 |

TEP - TR 413-21-597 - 4.5" PRODUCTION



Job Information

| | | | | | |
|----------------|-----------------------|----------|-------------------|------------|----------------|
| Request/Slurry | 2379820/2 | Rig Name | H&P 271 | Date | 12/APR/2017 |
| Submitted By | Patrick Ealey | Job Type | Production Casing | Bulk Plant | Grand Junction |
| Customer | Terra Energy Partners | Location | Garfield | Well | TR 413-21-597 |

Well Information

| | | | | | |
|-------------------|----------|-----------|---------|------|---------------|
| Casing/Liner Size | 4.5 in | Depth MD | 9321 ft | BHST | 114°C / 238°F |
| Hole Size | 8.75 in | Depth TVD | 9626 ft | BHCT | 76°C / 168°F |
| Pressure | 5820 psi | | | | |

Drilling Fluid Information

| | | | | | |
|-------------------|--------|----------------|------------|---------|--------------|
| Mud Supplier Name | Baroid | Mud Trade Name | BARADRIL-N | Density | 10.4 lbm/gal |
|-------------------|--------|----------------|------------|---------|--------------|

Cement Information - Lead Design



| Conc | UOM | Cement/Additive | Sample Type | Sample Date | Lot No. | Cement Properties | | |
|------|-----|-----------------|-------------|-------------|---------|-------------------|-------------|----------|
| | | | | | | Slurry Density | 12.5 | lbm/gal |
| | | | | | | Slurry Yield | 1.941 | ft3/sack |
| | | | | | | Water Requirement | 9.623 | gal/sack |
| | | | | | | Total Mix Fluid | 9.623 | gal/sack |
| | | | | | | Water Source | Fresh Water | |
| | | | | | | Water Chloride | | |

This report is the property of Halliburton Energy Services and neither it nor any part thereof, nor a copy thereof, is to be published or disclosed without first securing the expressed written approval of Halliburton. It may however be used in the course of regular business operations by any person or concern receiving such report from Halliburton. This report is for information purposes only and the content is limited to the sample described. Halliburton makes no warranties, expressed or implied, as to the accuracy of the contents or results. Any user of this report agrees Halliburton shall not be liable for any loss or damage regardless of cause, including any act or omission of Halliburton, resulting from the use hereof.

Operation Test Results Request ID 2379820/2

Thickening Time - ON-OFF-ON

15/APR/2017

| Test Temp (°F) | Pressure (psi) | Reached in (min) | 30 Bc (hh:mm) | 50 Bc (hh:mm) | 70 Bc (hh:mm) | 100 Bc (hh:mm) | Start Bc | Stirring before stop (mins) | Static Period (min) | Peak reading (BC) |
|----------------|----------------|------------------|---------------|---------------|---------------|----------------|----------|-----------------------------|---------------------|-------------------|
| 168 | 5820 | 47 | 4:26 | 4:53 | 5:37 | 5:52 | 12 | 57 | 15 | 12 |

Total Sacks= 550

CS0810 TR 1283 150 SKS

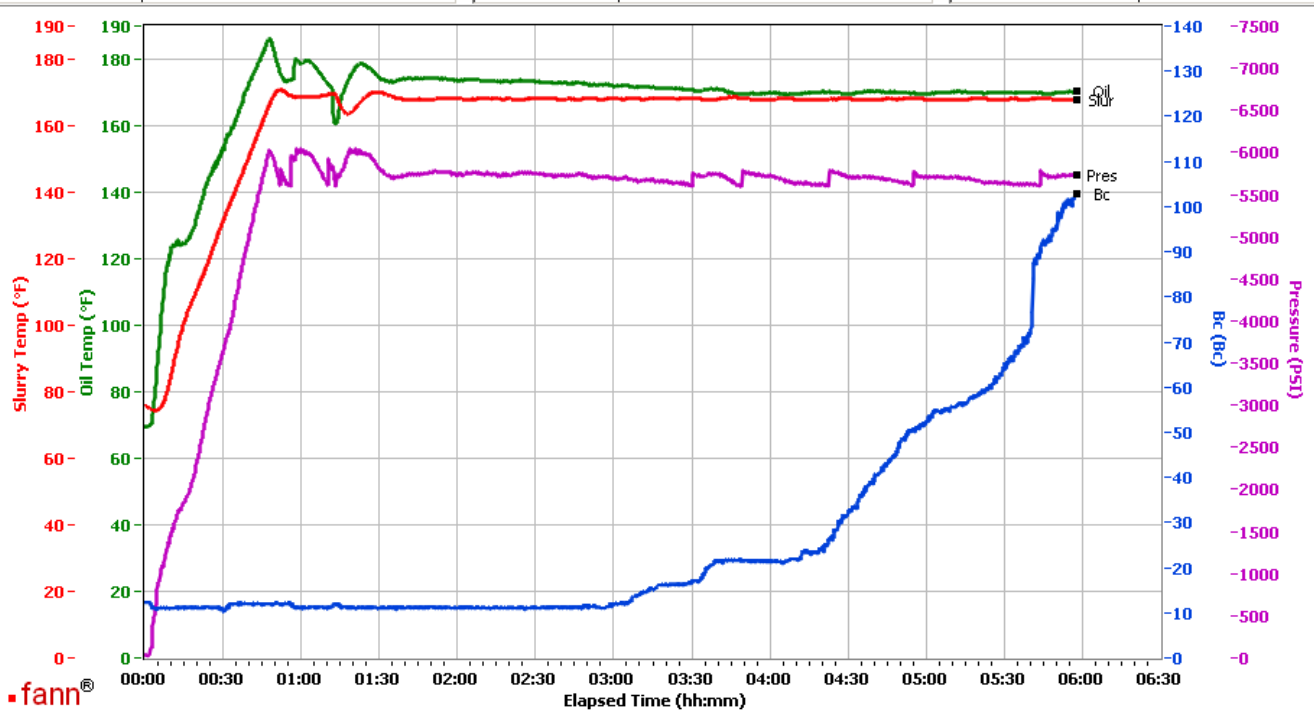
Deflected 11-- > 12

Grand Junction Colorado

| Fields | Values |
|-------------------|--------------------------------------|
| Project Name | GJ2379820-2 TEP PRODUCTION BULK LEAD |
| Test ID | 34472326 |
| Request ID | GJ2379820-2 TEP PRODUCTION BULK LEAD |
| Tested by | JASON |
| Customer | TEP |
| Well No | TR 413-21-597 |
| Rig | H&P 271 |
| Casing/Liner Size | 4.5 |

| Fields | Values |
|----------------|--------------|
| Job Type | PRODUCTION |
| Cement Type | NEOCEM |
| Cement Weight | Light Weight |
| Test Date | 04/15/17 |
| Test Time | 04:03 PM |
| Temp. Units | degF |
| Pressure Units | PSI |
| SW Version | 2.1.0.507 |

| Events | Results |
|-----------|---------|
| 30.00 Bc | 04h:26m |
| 40.00 Bc | 04h:40m |
| 50.00 Bc | 04h:53m |
| 70.00 Bc | 05h:37m |
| 100.00 Bc | 05h:52m |
| 00h:30m | 10.61 |
| 01h:00m | 11.16 |
| 01h:30m | 11.13 |



| | |
|-----------|--|
| Data File | C:\Documents and Settings\M290\Local Settings\Temporary Internet Files\Content.IE5\4TIJ89YN\GJ2379820-2 TEP PRODUCTION BULK LEAD[1].tdms |
| Comments | CS0810 TR 1283 150 SKS |

This report is the property of Halliburton Energy Services and neither it nor any part thereof, nor a copy thereof, is to be published or disclosed without first securing the expressed written approval of Halliburton. It may however be used in the course of regular business operations by any person or concern receiving such report from Halliburton. This report is for information purposes only and the content is limited to the sample described. Halliburton makes no warranties, expressed or implied, as to the accuracy of the contents or results. Any user of this report agrees Halliburton shall not be liable for any loss or damage regardless of cause, including any act or omission of Halliburton, resulting from the use hereof.

Operation Test Results Request ID 2379820/1

Thickening Time - ON-OFF-ON

14/APR/2017

| Test Temp (°F) | Pressure (psi) | Reached in (min) | 30 Bc (hh:mm) | 50 Bc (hh:mm) | 70 Bc (hh:mm) | 100 Bc (hh:mm) | Start Bc | Stirring before stop (mins) | Static Period (min) | Peak reading (BC) |
|----------------|----------------|------------------|---------------|---------------|---------------|----------------|----------|-----------------------------|---------------------|-------------------|
| 168 | 5820 | 47 | 3:54 | 4:58 | 5:00 | 5:03 | 7 | 57 | 15 | 18 |

Total Sacks= 550

CS0796 TR 0812 400 SKS

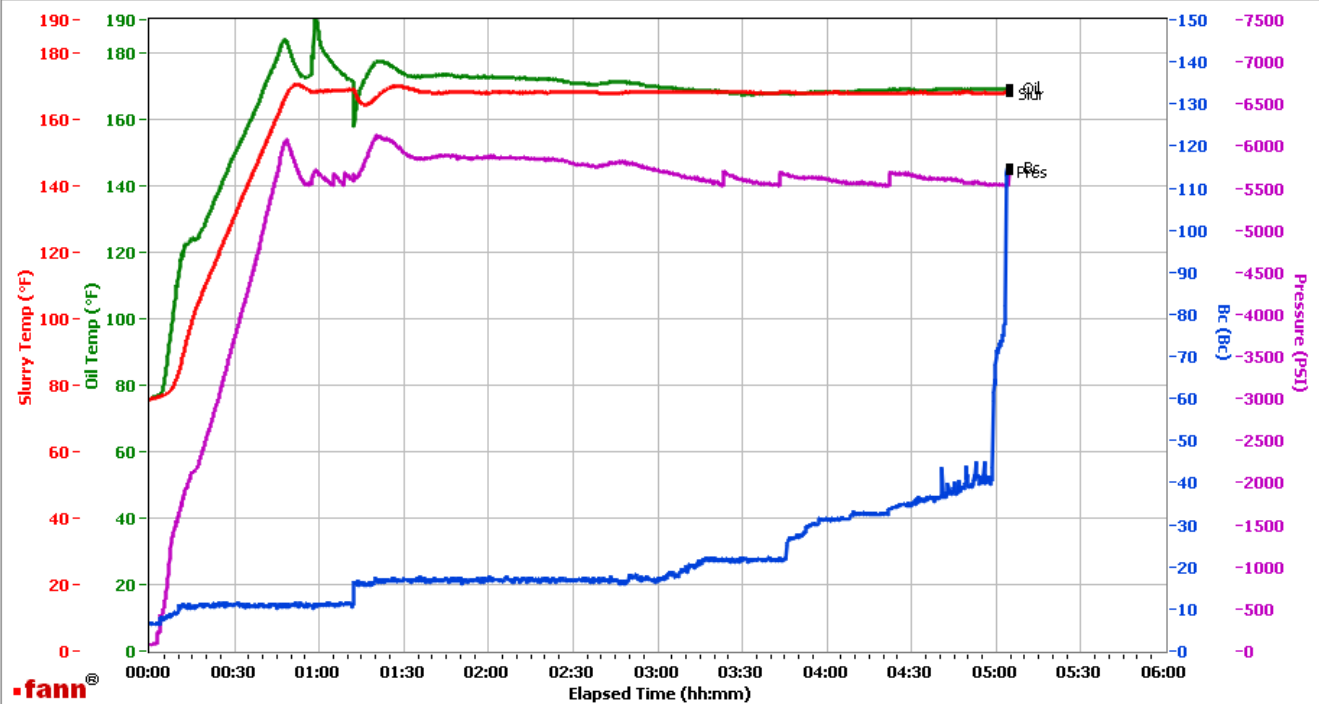
Deflected 11-- > 18

Grand Junction Colorado

| Fields | Values |
|-------------------|--------------------------------------|
| Project Name | GJ2379820-1 TEP PRODUCTION BULK LEAD |
| Test ID | 34465417 |
| Request ID | GJ2379820-1 TEP PRODUCTION BULK LEAD |
| Tested by | JASON |
| Customer | TEP |
| Well No | TR 413-21-597 |
| Rig | H&P 271 |
| Casing/Liner Size | 4.5 |

| Fields | Values |
|----------------|--------------|
| Job Type | PRODUCTION |
| Cement Type | NEOCEM |
| Cement Weight | Light Weight |
| Test Date | 04/14/17 |
| Test Time | 07:18 PM |
| Temp. Units | degF |
| Pressure Units | PSI |
| SW Version | 2.1.0.507 |

| Events | Results |
|-----------|---------|
| 30.00 Bc | 03h:54m |
| 40.00 Bc | 04h:40m |
| 50.00 Bc | 04h:58m |
| 70.00 Bc | 05h:00m |
| 100.00 Bc | 05h:03m |
| 00h:30m | 11.34 |
| 01h:00m | 11.07 |
| 01h:30m | 17.12 |



Data File C:\Documents and Settings\Administrator\Desktop\Test Data\GJ2379820-1 TEP PRODUCTION BULK LEAD.tdms

Comments CS0796 TR 0812 400 SKS

This report is the property of Halliburton Energy Services and neither it nor any part thereof, nor a copy thereof, is to be published or disclosed without first securing the expressed written approval of Halliburton. It may however be used in the course of regular business operations by any person or concern receiving such report from Halliburton. This report is for information purposes only and the content is limited to the sample described. Halliburton makes no warranties, expressed or implied, as to the accuracy of the contents or results. Any user of this report agrees Halliburton shall not be liable for any loss or damage regardless of cause, including any act or omission of Halliburton, resulting from the use hereof.

HALLIBURTON

Rockies, Grand Junction

Lab Results- Tail

Job Information

| | | | | | |
|----------------|-----------------------|----------|-------------------|------------|----------------|
| Request/Slurry | 2379821/2 | Rig Name | H&P 271 | Date | 12/APR/2017 |
| Submitted By | Patrick Ealey | Job Type | Production Casing | Bulk Plant | Grand Junction |
| Customer | Terra Energy Partners | Location | Garfield | Well | TR 413-21-597 |

Well Information

| | | | | | |
|-------------------|----------|-----------|---------|------|---------------|
| Casing/Liner Size | 4.5 in | Depth MD | 9321 ft | BHST | 114°C / 238°F |
| Hole Size | 8.75 in | Depth TVD | 9626 ft | BHCT | 76°C / 168°F |
| Pressure | 5820 psi | | | | |

Drilling Fluid Information

| | | | | | |
|-------------------|--------|----------------|------------|---------|--------------|
| Mud Supplier Name | Baroid | Mud Trade Name | BARADRIL-N | Density | 10.4 lbm/gal |
|-------------------|--------|----------------|------------|---------|--------------|

Cement Information - Tail Design



| <u>Conc</u> | <u>UOM</u> | <u>Cement/Additive</u> | <u>Sample Type</u> | <u>Sample Date</u> | <u>Lot No.</u> | <u>Cement Properties</u> | |
|-------------|------------|------------------------|--------------------|--------------------|----------------|--------------------------|----------------|
| | | | | | | Slurry Density | 13 lbm/gal |
| | | | | | | Slurry Yield | 2.065 ft3/sack |
| | | | | | | Water Requirement | 9.429 gal/sack |
| | | | | | | Total Mix Fluid | 9.429 gal/sack |
| | | | | | | Water Source | Fresh Water |
| | | | | | | Water Chloride | |

This report is the property of Halliburton Energy Services and neither it nor any part thereof, nor a copy thereof, is to be published or disclosed without first securing the expressed written approval of Halliburton. It may however be used in the course of regular business operations by any person or concern receiving such report from Halliburton. This report is for information purposes only and the content is limited to the sample described. Halliburton makes no warranties, expressed or implied, as to the accuracy of the contents or results. Any user of this report agrees Halliburton shall not be liable for any loss or damage regardless of cause, including any act or omission of Halliburton, resulting from the use hereof.

Operation Test Results Request ID 2379821/2

Thickening Time - ON-OFF-ON

15/APR/2017

| Test Temp (°F) | Pressure (psi) | Reached in (min) | 30 Bc (hh:mm) | 50 Bc (hh:mm) | 70 Bc (hh:mm) | 100 Bc (hh:mm) | Start Bc | Stirring before stop (mins) | Static Period (min) | Peak reading (BC) |
|----------------|----------------|------------------|---------------|---------------|---------------|----------------|----------|-----------------------------|---------------------|-------------------|
| 168 | 5820 | 47 | 2:20 | 2:28 | 2:33 | 2:38 | 20 | 57 | 15 | 14 |

Total sks = 765

CS0809 TR 1283 100 SKS

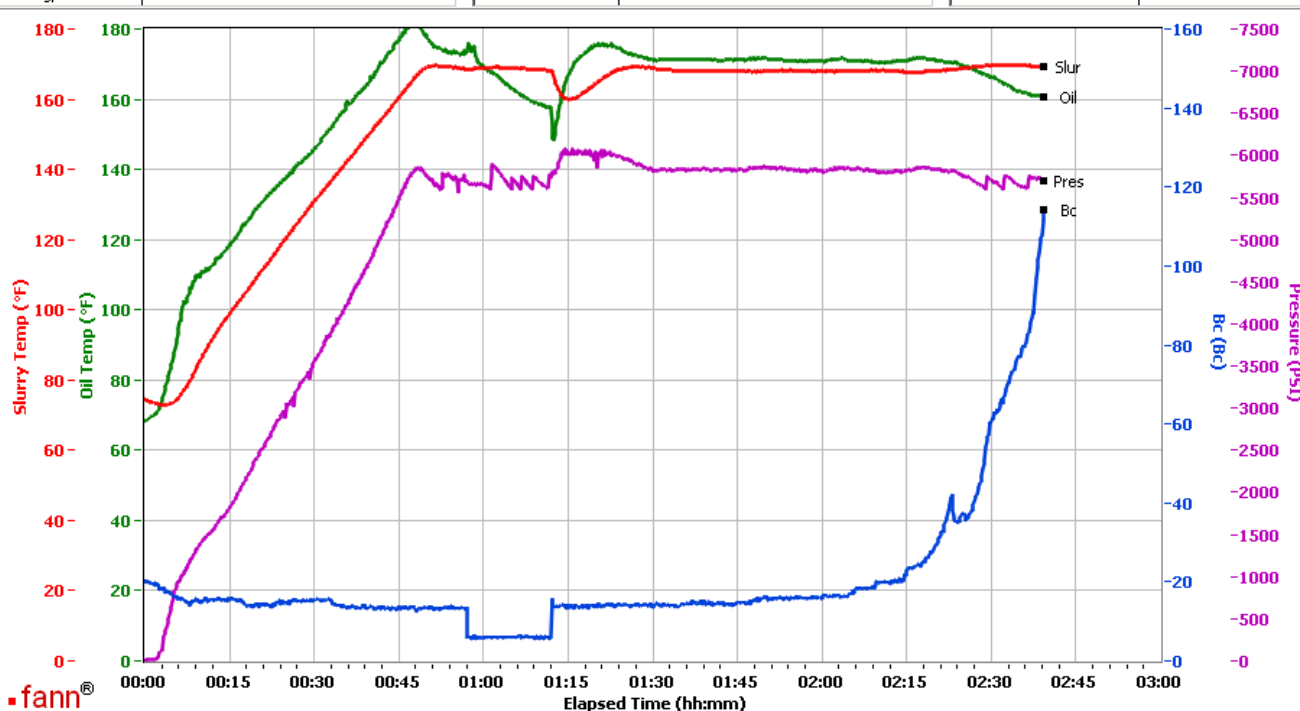
Deflected 6-- > 14. Went into SD at 14 Bc

Grand Junction, Colorado

| Fields | Values |
|-------------------|--------------------------------------|
| Project Name | GJ2379821-2 TEP PRODUCTION BULK TAIL |
| Test ID | 34472315 |
| Request ID | GJ2379821-2 TEP PRODUCTION BULK TAIL |
| Tested by | JASON |
| Customer | TEP |
| Well No | TR 413-21-597 |
| Rig | H&P 271 |
| Casing/Liner Size | 4.5 |

| Fields | Values |
|----------------|--------------|
| Job Type | PRODUCTION |
| Cement Type | NEOCEM |
| Cement Weight | Light Weight |
| Test Date | 04/15/17 |
| Test Time | 10:52 PM |
| Temp. Units | degF |
| Pressure Units | PSI |
| SW Version | 2.1.0.507 |

| Events | Results |
|-----------|---------|
| 30.00 Bc | 02h:20m |
| 40.00 Bc | 02h:22m |
| 50.00 Bc | 02h:28m |
| 70.00 Bc | 02h:33m |
| 100.00 Bc | 02h:38m |
| 00h:30m | 15.24 |
| 01h:00m | 5.89 |
| 01h:30m | 13.51 |



Data File C:\Documents and Settings\M290\Desktop\Test Data\GJ2379821-2 TEP PRODUCTION BULK TAIL.tdms

Comments CS0809 TR 1283 100 SKS

This report is the property of Halliburton Energy Services and neither it nor any part thereof, nor a copy thereof, is to be published or disclosed without first securing the expressed written approval of Halliburton. It may however be used in the course of regular business operations by any person or concern receiving such report from Halliburton. This report is for information purposes only and the content is limited to the sample described. Halliburton makes no warranties, expressed or implied, as to the accuracy of the contents or results. Any user of this report agrees Halliburton shall not be liable for any loss or damage regardless of cause, including any act or omission of Halliburton, resulting from the use hereof.

Operation Test Results Request ID 2379821/1

Thickening Time - ON-OFF-ON

14/APR/2017

| Test Temp (°F) | Pressure (psi) | Reached in (min) | 30 Bc (hh:mm) | 50 Bc (hh:mm) | 70 Bc (hh:mm) | 100 Bc (hh:mm) | Start Bc | Stirring before stop (mins) | Static Period (min) | Peak reading (BC) |
|----------------|----------------|------------------|---------------|---------------|---------------|----------------|----------|-----------------------------|---------------------|-------------------|
| 168 | 5820 | 47 | 2:50 | 2:54 | 3:05 | 3:07 | 14 | 57 | 15 | 13 |

Total sks = 765

CS0800 TR 8677 332.5 SKS

CS0801 TR 1513 332.5 SKS

Composite

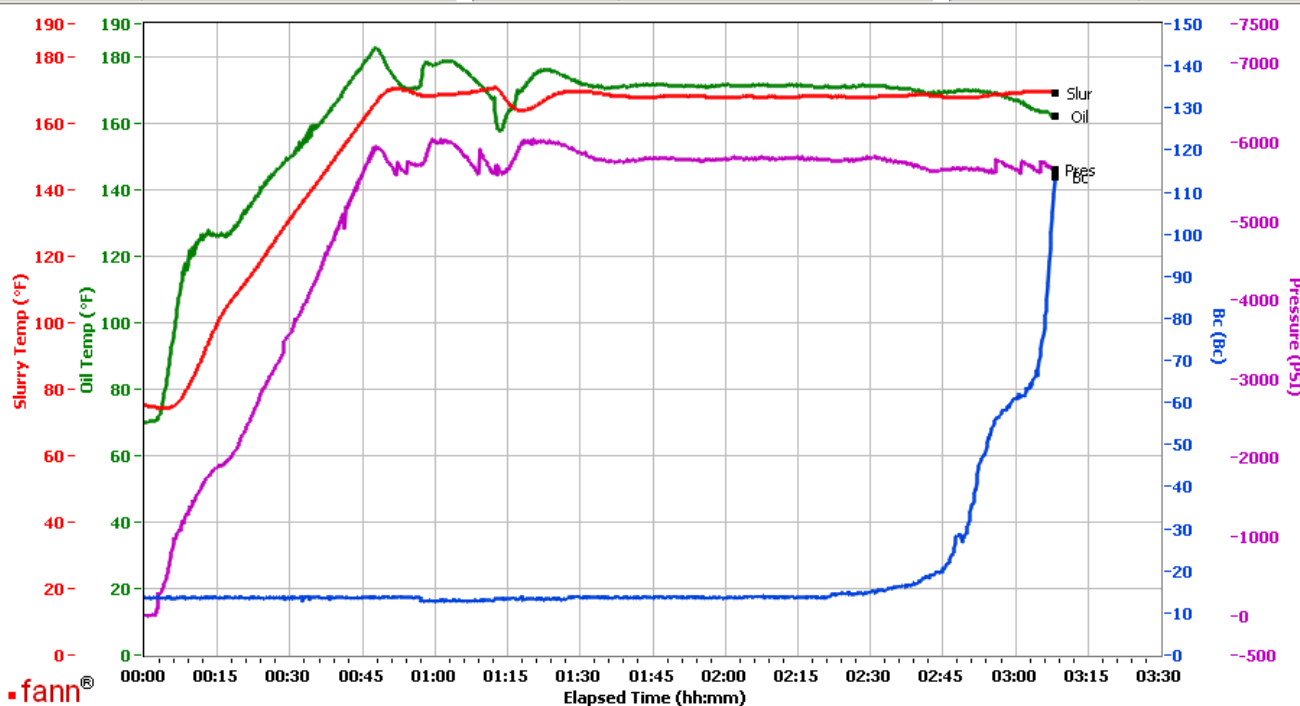
No deflection

Grand Junction Colorado

| Fields | Values |
|-------------------|--------------------------------------|
| Project Name | GJ2379821-1 TEP PRODUCTION BULK TAIL |
| Test ID | 34465419 |
| Request ID | GJ2379821-1 TEP PRODUCTION BULK TAIL |
| Tested by | JASON |
| Customer | TEP |
| Well No | TR 413-21-597 |
| Rig | H8P 271 |
| Casing/Liner Size | 4.5 |

| Fields | Values |
|----------------|--------------|
| Job Type | PRODUCTION |
| Cement Type | NEOCEM |
| Cement Weight | Light Weight |
| Test Date | 04/14/17 |
| Test Time | 01:40 PM |
| Temp. Units | degF |
| Pressure Units | PSI |
| SW Version | 2.1.0.507 |

| Events | Results |
|-----------|---------|
| 30.00 Bc | 02h:50m |
| 40.00 Bc | 02h:52m |
| 50.00 Bc | 02h:54m |
| 70.00 Bc | 03h:05m |
| 100.00 Bc | 03h:07m |
| 00h:30m | 13.56 |
| 01h:00m | 12.68 |
| 01h:30m | 13.74 |



Data File C:\Documents and Settings\M290\Local Settings\Temporary Internet Files\Content.IE5\K9YZ0P2R\GJ2379821-1 TEP PRODUCTION BULK TAIL COMP.[1].tdms

Comments CS0800 TR 8677 332.5 SKS CS0801 TR 1513 332.5 SKS

This report is the property of Halliburton Energy Services and neither it nor any part thereof, nor a copy thereof, is to be published or disclosed without first securing the expressed written approval of Halliburton. It may however be used in the course of regular business operations by any person or concern receiving such report from Halliburton. This report is for information purposes only and the content is limited to the sample described. Halliburton makes no warranties, expressed or implied, as to the accuracy of the contents or results. Any user of this report agrees Halliburton shall not be liable for any loss or damage regardless of cause, including any act or omission of Halliburton, resulting from the use hereof.