



NOBLE ENERGY, INC

Location: COLORADO

Slot: Slot #1 Stalnd G35-19

Field: WELD COUNTY (NOBLE NAD 83)

Well: Stalnd G35-19

Facility: SEC35-T4N-R65W

Wellbore: Stalnd G35-19 PWB



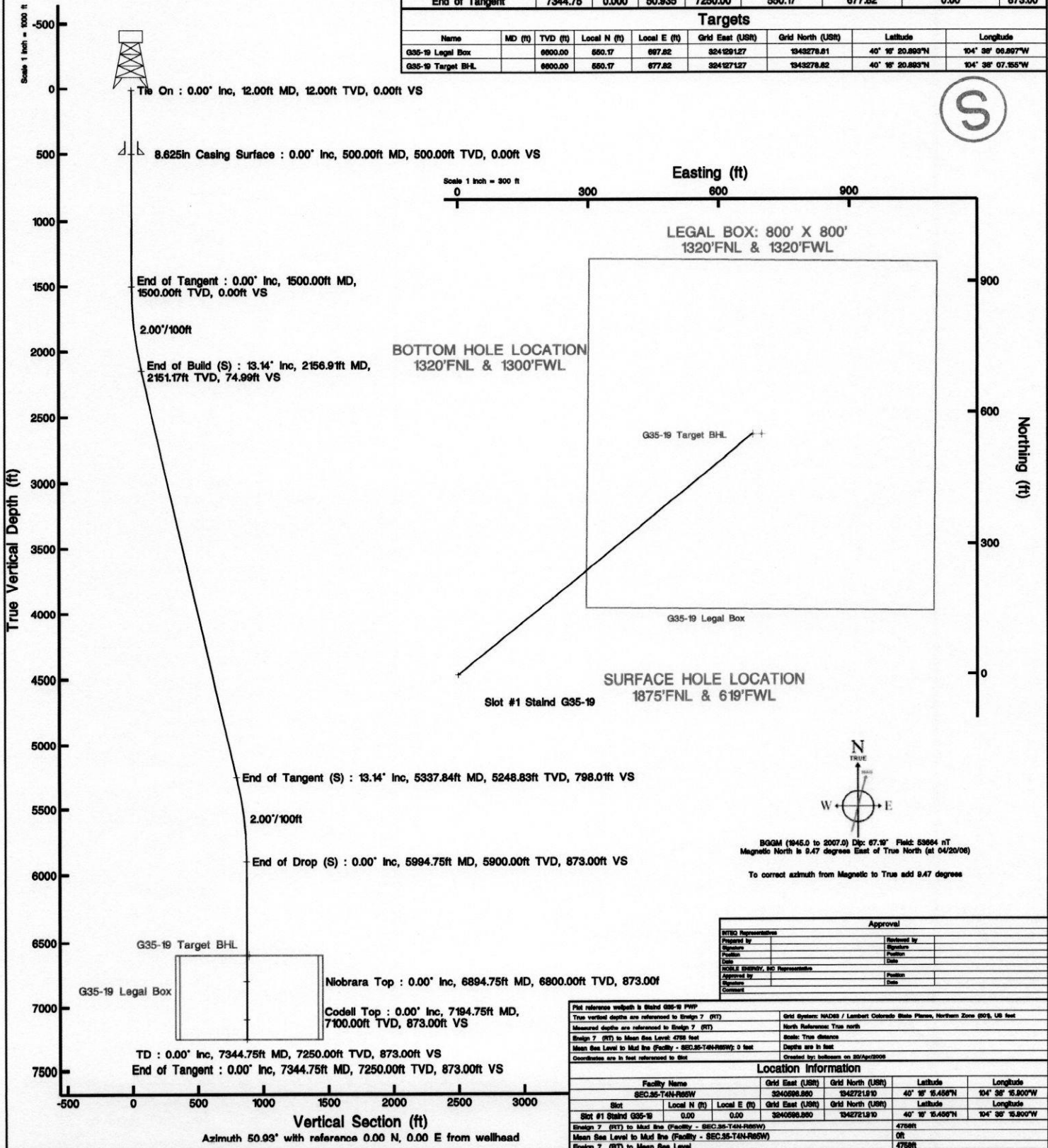
INTEQ

Well Profile Data

Design Comment	MD (ft)	Inc (°)	Az (°)	TVD (ft)	Local N (ft)	Local E (ft)	DLS (/100ft)	VS (ft)
Tie On	12.00	0.000	50.935	12.00	0.00	0.00	0.00	0.00
End of Tangent	1500.00	0.000	50.935	1500.00	0.00	0.00	0.00	0.00
End of Build (S)	2156.91	13.138	50.935	2151.17	47.26	58.22	2.00	74.99
End of Tangent (S)	5337.84	13.138	50.935	5248.83	502.91	619.60	0.00	798.01
End of Drop (S)	5994.75	0.000	50.935	5900.00	550.17	677.82	2.00	873.00
End of Tangent	7344.75	0.000	50.935	7250.00	550.17	677.82	0.00	873.00

Targets

Name	MD (ft)	TVD (ft)	Local N (ft)	Local E (ft)	Grid East (USR)	Grid North (USR)	Latitude	Longitude
G35-19 Legal Box	6800.00	6800.00	550.17	677.82	324129.127	1343278.81	40° 18' 20.885"N	104° 38' 06.897"W
G35-19 Target BHL	6800.00	6800.00	550.17	677.82	324129.127	1343278.82	40° 18' 20.885"N	104° 38' 07.555"W



BOGM (1945.0 to 2007.0) Dip: 67.15° Field: 53964 nT
Magnetic North is 9.47 degrees East of True North (at 04/20/06)
To correct azimuth from Magnetic to True add 9.47 degrees

Approval	
INTEQ Representative	Reviewed by
Signature	Signature
Position	Position
Date	Date
NOBLE ENERGY, INC Representative	Reviewed by
Signature	Signature
Date	Date

True vertical depth is Stalnd G35-19 PWB			
Measured depths are referenced to Elevation 7 (RT)		Grid System: NAD83 / Lambert Colorado State Plane, Northern Zone (80's, US feet)	
Elevation 7 (RT) to Mean Sea Level: 4768 feet		North Reference: True north	
Mean Sea Level to Mud line (Facility - SEC35-T4N-R65W): 0 feet		Scale: True distance	
Coordinates are in feet referenced to Slot		Depths are in feet	
Created by: INTEQ on 05/04/2006			
Location Information			
Facility Name	Grid East (USR)	Grid North (USR)	Latitude
SEC35-T4N-R65W	3240596.860	13427218.10	40° 18' 15.456"N
Slot	Local N (ft)	Local E (ft)	Longitude
Slot #1 Stalnd G35-19	0.00	0.00	104° 38' 15.800"W
Elevation 7 (RT) to Mud line (Facility - SEC35-T4N-R65W)		4768ft	
Mean Sea Level to Mud line (Facility - SEC35-T4N-R65W)		0ft	
Elevation 7 (RT) to Mean Sea Level		4768ft	



Planned Wellpath Report

Wellpath: Staind G35-19 PWP

Page 1 of 4



REFERENCE WELLPATH IDENTIFICATION

Operator	NOBLE ENERGY, INC	Slot	Slot #1 Staind G35-19
Area	COLORADO	Well	Staind G35-19
Field	WELD COUNTY (NOBLE NAD 83)	Wellbore	Staind G35-19 PWB
Facility	SEC.35-T4N-R65W		

REPORT SETUP INFORMATION

Projection System	NAD83 / Lambert Colorado State Planes, Northern Zone (501), US feet	Software System	WellArchitect™ 1.1
North Reference	True	User	Boltcasm
Scale	0.999957	Report Generated	04/20/06 at 12:54:12
Wellbore last revised	04/20/06	Database/Source file	WA_Denver/Staind_C

WELLPATH LOCATION

	Local coordinates		Grid coordinates		Geographic coordinates	
	North [feet]	East [feet]	Easting [US feet]	Northing [US feet]	Latitude [°]	Longitude [°]
Slot Location	0.00	0.00	3240598.86	1342721.91	40 16 15.456N	104 38 15.900W
Facility Reference Pt			3240598.86	1342721.91	40 16 15.456N	104 38 15.900W
Field Reference Pt			3000000.00	4454105.15	48 46 34.315N	105 30 00.000W

WELLPATH DATUM

Calculation method	Minimum curvature	Ensign 7 (RT) to Facility Vertical Datum	4758.00 feet
Horizontal Reference Pt	Slot	Ensign 7 (RT) to Mean Sea Level	4758.00 feet
Vertical Reference Pt	Ensign 7 (RT)	Facility Vertical Datum to Mud Line	0.00 feet
MD Reference Pt	Ensign 7 (RT)	Section Origin	N 0.00, E 0.00 ft
Field Vertical Reference	Mean Sea Level	Section Azimuth	50.93°



Planned Wellpath Report

Wellpath: Staind G35-19 PWP

Page 2 of 4



REFERENCE WELLPATH IDENTIFICATION

Operator	NOBLE ENERGY, INC	Slot	Slot #1 Staind G35-19
Area	COLORADO	Well	Staind G35-19
Field	WELD COUNTY (NOBLE NAD 83)	Wellbore	Staind G35-19 PWB
Facility	SEC.35-T4N-R65W		

WELLPATH DATA (80 stations) † = interpolated/extrapolated station

MD [feet]	Inclination [°]	Azimuth [°]	TVD [feet]	Vert Sect [feet]	North [feet]	East [feet]	DLS [°/100ft]
0.00†	0.000	50.935	0.00	0.00	0.00	0.00	0.00
12.00	0.000	50.935	12.00	0.00	0.00	0.00	0.00
112.00†	0.000	0.000	112.00	0.00	0.00	0.00	0.00
212.00†	0.000	0.000	212.00	0.00	0.00	0.00	0.00
312.00†	0.000	0.000	312.00	0.00	0.00	0.00	0.00
412.00†	0.000	0.000	412.00	0.00	0.00	0.00	0.00
512.00†	0.000	0.000	512.00	0.00	0.00	0.00	0.00
612.00†	0.000	0.000	612.00	0.00	0.00	0.00	0.00
712.00†	0.000	0.000	712.00	0.00	0.00	0.00	0.00
812.00†	0.000	0.000	812.00	0.00	0.00	0.00	0.00
912.00†	0.000	0.000	912.00	0.00	0.00	0.00	0.00
1012.00†	0.000	0.000	1012.00	0.00	0.00	0.00	0.00
1112.00†	0.000	0.000	1112.00	0.00	0.00	0.00	0.00
1212.00†	0.000	0.000	1212.00	0.00	0.00	0.00	0.00
1312.00†	0.000	0.000	1312.00	0.00	0.00	0.00	0.00
1412.00†	0.000	0.000	1412.00	0.00	0.00	0.00	0.00
1500.00	0.000	50.935	1500.00	0.00	0.00	0.00	0.00
1512.00†	0.240	50.935	1512.00	0.03	0.02	0.02	2.00
1612.00†	2.240	50.935	1611.97	2.19	1.38	1.70	2.00
1712.00†	4.240	50.935	1711.81	7.84	4.94	6.09	2.00
1812.00†	6.240	50.935	1811.38	16.97	10.70	13.18	2.00
1912.00†	8.240	50.935	1910.58	29.57	18.64	22.96	2.00
2012.00†	10.240	50.935	2009.28	45.63	28.76	35.43	2.00
2112.00†	12.240	50.935	2107.36	65.12	41.04	50.56	2.00
2156.91	13.138	50.935	2151.17	74.99	47.26	58.22	2.00
2212.00†	13.138	50.935	2204.82	87.51	55.15	67.94	0.00
2312.00†	13.138	50.935	2302.20	110.24	69.47	85.59	0.00
2412.00†	13.138	50.935	2399.58	132.97	83.80	103.24	0.00
2512.00†	13.138	50.935	2496.96	155.70	98.12	120.89	0.00
2612.00†	13.138	50.935	2594.35	178.43	112.45	138.54	0.00
2712.00†	13.138	50.935	2691.73	201.16	126.77	156.19	0.00
2812.00†	13.138	50.935	2789.11	223.89	141.10	173.83	0.00
2912.00†	13.138	50.935	2886.49	246.62	155.42	191.48	0.00
3012.00†	13.138	50.935	2983.88	269.35	169.75	209.13	0.00
3112.00†	13.138	50.935	3081.26	292.08	184.07	226.78	0.00
3212.00†	13.138	50.935	3178.64	314.81	198.39	244.43	0.00
3312.00†	13.138	50.935	3276.02	337.54	212.72	262.08	0.00
3412.00†	13.138	50.935	3373.41	360.27	227.04	279.72	0.00
3512.00†	13.138	50.935	3470.79	383.00	241.37	297.37	0.00
3612.00†	13.138	50.935	3568.17	405.73	255.69	315.02	0.00



Planned Wellpath Report

Wellpath: Staind G35-19 PWP

Page 3 of 4



REFERENCE WELLPATH IDENTIFICATION

Operator	NOBLE ENERGY, INC	Slot	Slot #1 Staind G35-19
Area	COLORADO	Well	Staind G35-19
Field	WELD COUNTY (NOBLE NAD 83)	Wellbore	Staind G35-19 PWB
Facility	SEC.35-T4N-R65W		

WELLPATH DATA (80 stations) † = interpolated/extrapolated station

MD [feet]	Inclination [°]	Azimuth [°]	TVD [feet]	Vert Sect [feet]	North [feet]	East [feet]	DLS [°/100ft]
3712.00†	13.138	50.935	3665.55	428.46	270.02	332.67	0.00
3812.00†	13.138	50.935	3762.94	451.19	284.34	350.32	0.00
3912.00†	13.138	50.935	3860.32	473.92	298.67	367.96	0.00
4012.00†	13.138	50.935	3957.70	496.65	312.99	385.61	0.00
4112.00†	13.138	50.935	4055.08	519.38	327.32	403.26	0.00
4212.00†	13.138	50.935	4152.47	542.11	341.64	420.91	0.00
4312.00†	13.138	50.935	4249.85	564.84	355.97	438.56	0.00
4412.00†	13.138	50.935	4347.23	587.57	370.29	456.21	0.00
4512.00†	13.138	50.935	4444.61	610.30	384.61	473.85	0.00
4612.00†	13.138	50.935	4542.00	633.03	398.94	491.50	0.00
4712.00†	13.138	50.935	4639.38	655.76	413.26	509.15	0.00
4812.00†	13.138	50.935	4736.76	678.49	427.59	526.80	0.00
4912.00†	13.138	50.935	4834.14	701.22	441.91	544.45	0.00
5012.00†	13.138	50.935	4931.53	723.95	456.24	562.10	0.00
5112.00†	13.138	50.935	5028.91	746.68	470.56	579.74	0.00
5212.00†	13.138	50.935	5126.29	769.41	484.89	597.39	0.00
5312.00†	13.138	50.935	5223.67	792.14	499.21	615.04	0.00
5337.84	13.138	50.935	5248.83	798.01	502.91	619.60	0.00
5412.00†	11.655	50.935	5321.27	813.93	512.95	631.96	2.00
5512.00†	9.655	50.935	5419.54	832.42	524.60	646.32	2.00
5612.00†	7.655	50.935	5518.39	847.47	534.08	658.00	2.00
5712.00†	5.655	50.935	5617.71	859.06	541.38	667.00	2.00
5812.00†	3.655	50.935	5717.38	867.17	546.50	673.30	2.00
5912.00†	1.655	50.935	5817.27	871.81	549.42	676.89	2.00
5994.75	0.000	50.935	5900.00 ¹	873.00	550.17	677.82	2.00
6012.00†	0.000	0.000	5917.25	873.00	550.17	677.82	0.00
6112.00†	0.000	0.000	6017.25	873.00	550.17	677.82	0.00
6212.00†	0.000	0.000	6117.25	873.00	550.17	677.82	0.00
6312.00†	0.000	0.000	6217.25	873.00	550.17	677.82	0.00
6412.00†	0.000	0.000	6317.25	873.00	550.17	677.82	0.00
6512.00†	0.000	0.000	6417.25	873.00	550.17	677.82	0.00
6612.00†	0.000	0.000	6517.25	873.00	550.17	677.82	0.00
6712.00†	0.000	0.000	6617.25	873.00	550.17	677.82	0.00
6812.00†	0.000	0.000	6717.25	873.00	550.17	677.82	0.00
6912.00†	0.000	0.000	6817.25	873.00	550.17	677.82	0.00
7012.00†	0.000	0.000	6917.25	873.00	550.17	677.82	0.00
7112.00†	0.000	0.000	7017.25	873.00	550.17	677.82	0.00
7212.00†	0.000	0.000	7117.25	873.00	550.17	677.82	0.00
7312.00†	0.000	0.000	7217.25	873.00	550.17	677.82	0.00
7344.75	0.000	50.935	7250.00	873.00	550.17	677.82	0.00

HOLE & CASING SECTIONS Ref Wellbore: Staind G35-19 PWB Ref Wellpath: Staind G35-19 PWP

String/Diameter	Start MD [feet]	End MD [feet]	Interval [feet]	Start TVD [feet]	End TVD [feet]	Start N/S [feet]	Start E/W [feet]	End N/S [feet]	End E/W [feet]
12.25in Open Hole	12.00	500.00	488.00	12.00	500.00	0.00	0.00	0.00	0.00
8.625in Casing Surface	12.00	500.00	488.00	12.00	500.00	0.00	0.00	0.00	0.00
7.875in Open Hole	500.00	7344.75	6844.75	500.00	7250.00	0.00	0.00	550.17	677.82



Planned Wellpath Report

Wellpath: Staind G35-19 PWP

Page 4 of 4



REFERENCE WELLPATH IDENTIFICATION

Operator	NOBLE ENERGY, INC	Slot	Slot #1 Staind G35-19
Area	COLORADO	Well	Staind G35-19
Field	WELD COUNTY (NOBLE NAD 83)	Wellbore	Staind G35-19 PWB
Facility	SEC.35-T4N-R65W		

TARGETS

Name	MD [feet]	TVD [feet]	North [feet]	East [feet]	Grid East [us survey feet]	Grid North [us survey feet]	Latitude [°]	Longitude [°]	Shape
G35-19 Legal Box		6600.00	550.17	697.82	3241291.27	1343278.81	40 16 20.893N	104 38 06.897W	square
1) G35-19 Target BHL		6600.00	550.17	677.82	3241271.27	1343278.62	40 16 20.893N	104 38 07.155W	point

SURVEY PROGRAM Ref Wellbore: Staind G35-19 PWB Ref Wellpath: Staind G35-19 PWP

Start MD [feet]	End MD [feet]	Tool Type	Positional Uncertainty Model	Log Name/Comment	Wellbore
0.00	500.00	MTC (Collar, pre-2000)	MTC (Collar, pre-2000) (Standard)		Staind G35-19 PWB
500.00	7344.75	MTC (Collar, pre-2000)	MTC (Collar, pre-2000) (Standard)		Staind G35-19 PWB

WELLPATH COMMENTS

MD [feet]	Inclination [degrees]	Azimuth [degrees]	TVD [feet]	Comment
6894.75	0.000	50.935	6800.00	Niobrara Top
7194.75	0.000	50.935	7100.00	Codell Top
7344.75	0.000	50.935	7250.00	TD