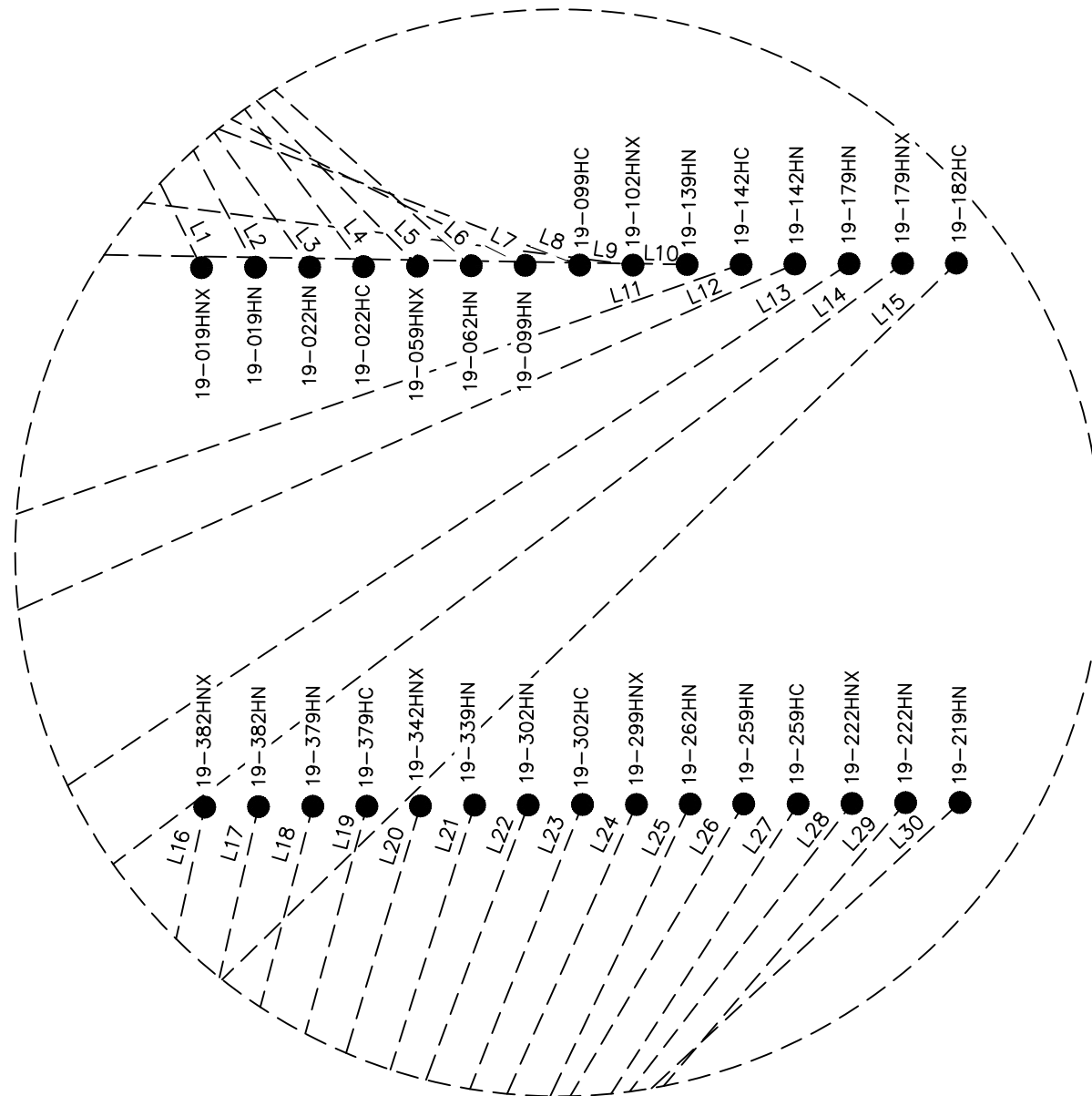


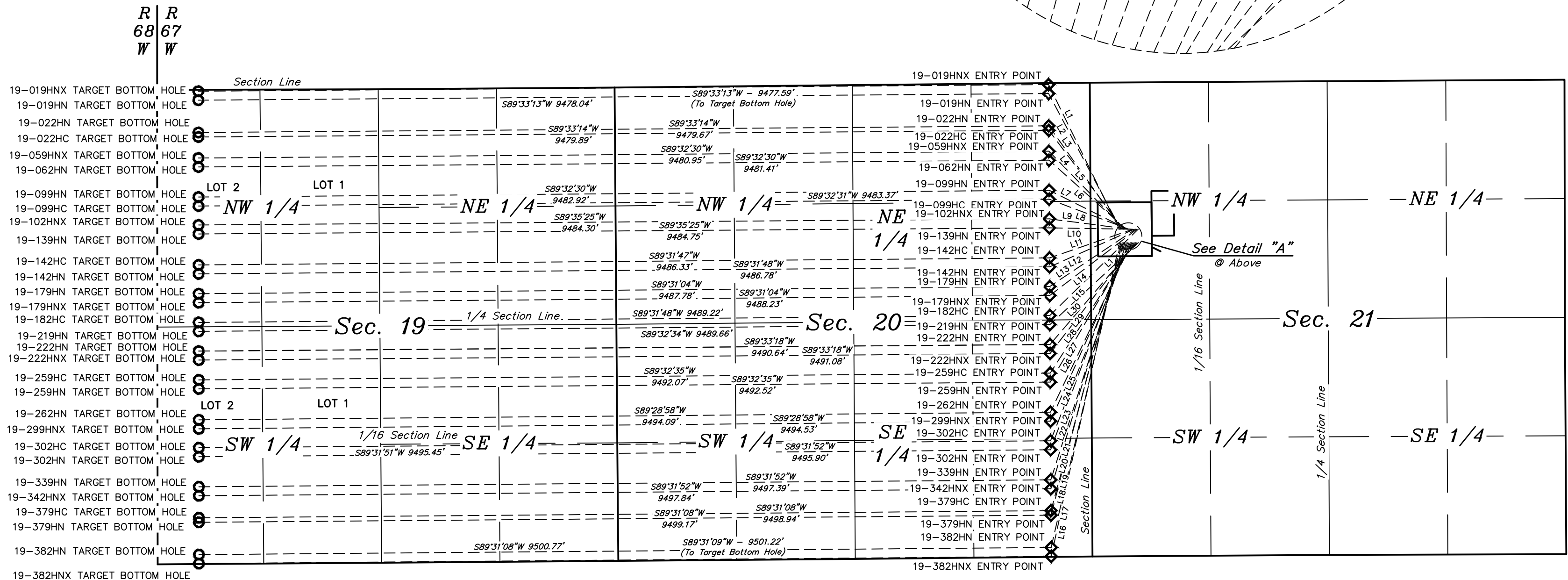


LEGEND:

- = PROPOSED WELLHEAD.
- = TARGET BOTTOM HOLE.
- ◇ = ENTRY POINT.



Detail "A"  
No Scale



LINE TABLE		
LINE	DIRECTION	LENGTH
L1	S47°12'04"W	1343.58'
L1	N26°06'24"W	1795.74'
L2	N28°00'54"W	1713.14'
L3	N35°21'25"W	1412.97'
L4	N37°03'27"W	1381.22'
L5	N44°12'46"W	1213.25'
L6	N48°11'28"W	1154.29'
L7	N63°33'29"W	975.53'
L8	N69°22'15"W	948.92'
L9	N82°42'39"W	908.98'
L10	N89°03'08"W	916.24'
L11	S71°00'20"W	982.73'
L12	S66°00'28"W	1032.84'
L13	S56°16'37"W	1151.08'
L14	S52°44'30"W	1220.91'
L15	S45°42'45"W	1376.60'
L16	S12°17'14"W	3577.54'
L17	S12°53'09"W	3483.44'
L18	S14°39'24"W	3137.92'
L19	S15°09'55"W	3093.55'
L20	S16°45'22"W	2863.49'
L21	S17°39'36"W	2772.80'
L22	S20°23'54"W	2461.53'
L23	S21°35'34"W	2373.90'
L24	S24°06'38"W	2178.36'
L25	S25°36'51"W	2094.26'
L26	S30°41'32"W	1806.55'
L27	S32°49'48"W	1729.77'
L28	S37°41'41"W	1560.25'
L29	S40°30'25"W	1492.55'
L30	S47°12'04"W	1343.58'

GREAT WESTERN OPERATING COMPANY

TOWER LD PAD  
SW 1/4 NW 1/4, SECTION 21, T1S, R67W, 6th P.M.  
ADAMS COUNTY, COLORADO

SURVEYED BY	GREG WEIMER, J.C.	11-22-16	SCALE
DRAWN BY	L.C.S.	11-28-16	1" = 1000'
MULTI-WELL PLAN		FIGURE #5	



UELS, LLC  
Corporate Office \* 85 South 200 East  
Vernal, UT 84078 \* (435) 789-1017