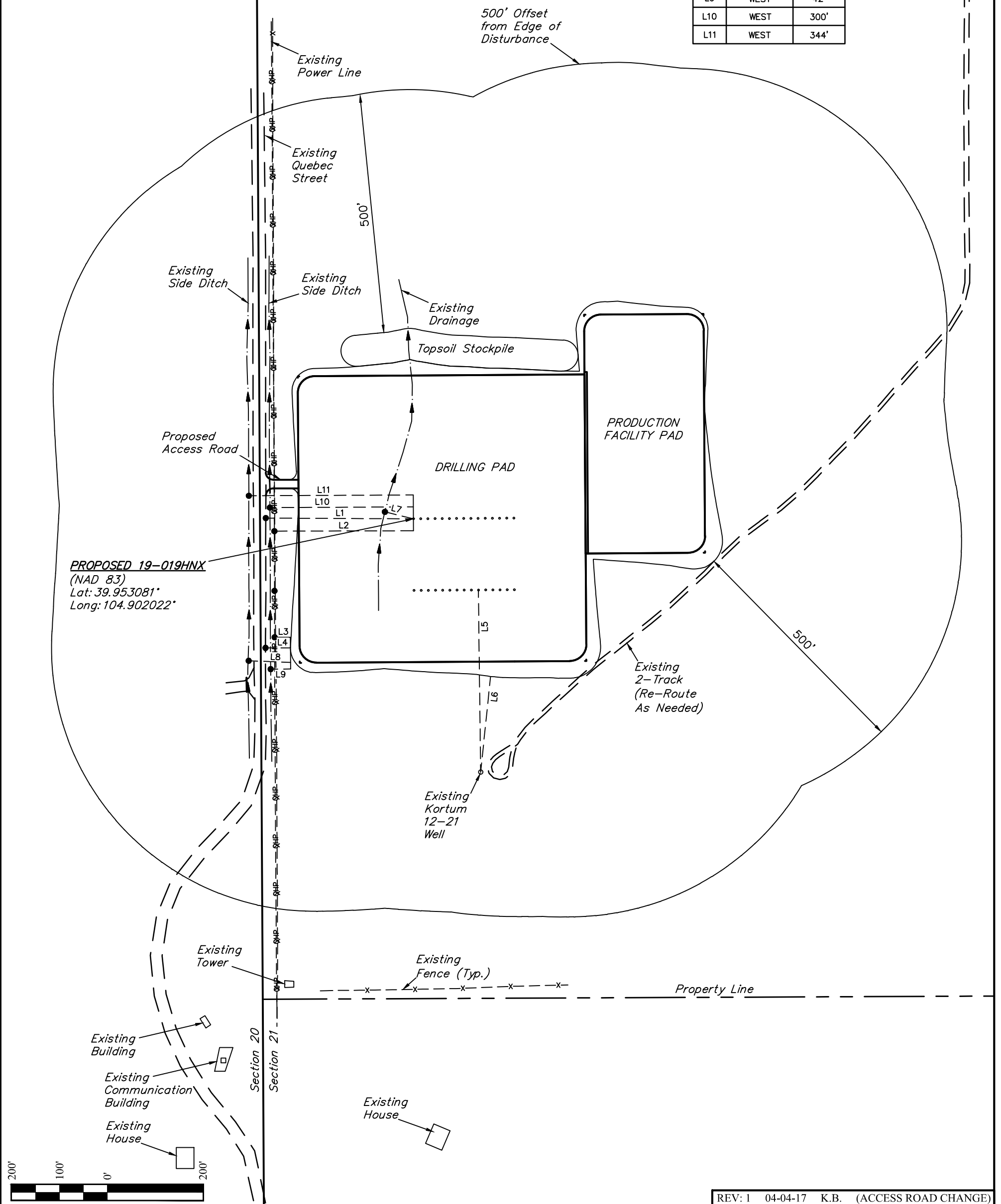




LINE TABLE		
LINE	DIRECTION	LENGTH
L1	WEST	309'
L2	WEST	291'
L3	WEST	33'
L4	WEST	52'
L5	S01'E	381'
L6	S06'W	201'
L7	N76'W	61'
L8	N88'W	88'
L9	WEST	42'
L10	WEST	300'
L11	WEST	344'



REV: 1 04-04-17 K.B. (ACCESS ROAD CHANGE)

TOWER LD PAD
SW 1/4 NW 1/4, SECTION 21, T1S, R67W, 6th P.M.
ADAMS COUNTY, COLORADO

SURVEYED BY	GREG WEIMER, J.C.	11-22-16	SCALE
DRAWN BY	L.C.S.	11-28-16	1" = 200'
LOCATION DRAWING		FIGURE #4	



UELS, LLC
Corporate Office * 85 South 200 East
Vernal, UT 84078 * (435) 789-1017