

LEGEND:

 PROPOSED LOCATION



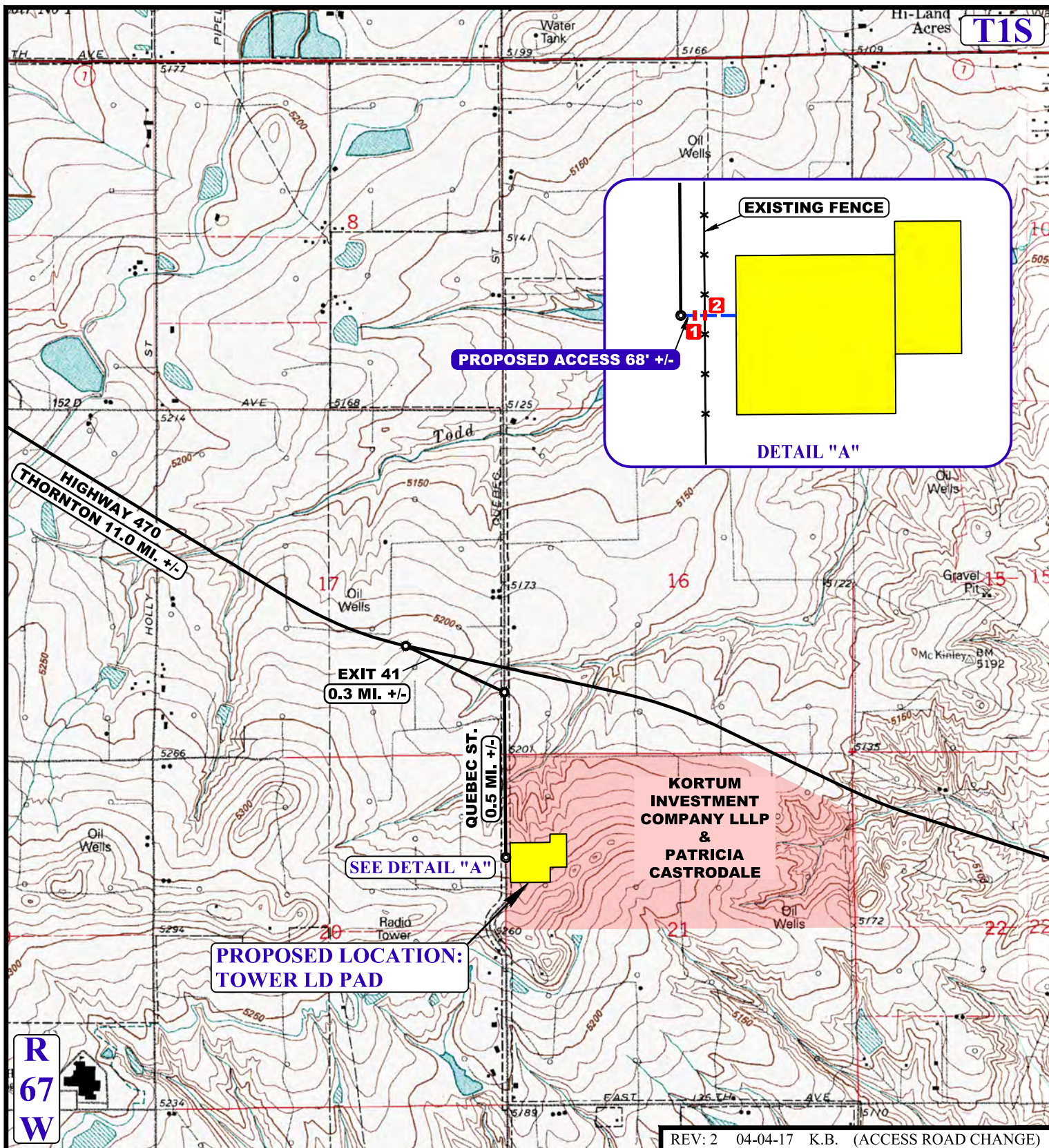
GREAT WESTERN OPERATING COMPANY

TOWER LD PAD
SW 1/4 NW 1/4, SECTION 21, T1S, R67W, 6th P.M.
ADAMS COUNTY, COLORADO

SURVEYED BY	G.W., J.C.	11-22-16	SCALE
DRAWN BY	J.L.G.	12-12-16	1 : 100,000
ACCESS ROAD MAP			TOPO A



UELS, LLC
Corporate Office * 85 South 200 East
Vernal, UT 84078 * (435) 789-1017



NOTE: PARCEL DATA SHOWN HAS BEEN OBTAINED FROM VARIOUS SOURCES AND SHOULD BE USED FOR MAPPING, GRAPHIC AND PLANNING PURPOSES ONLY. NO WARRANTY IS MADE BY UINTAH ENGINEERING AND LAND SURVEYING (UELS) FOR ACCURACY OF THE PARCEL DATA.

LEGEND:

- EXISTING ROAD
- - - PROPOSED ROAD
- x - x - EXISTING FENCE
- 1 INSTALL 18" CULVERT
- 2 INSTALL CATTLE GUARD



UELS, LLC
Corporate Office * 85 South 200 East
Vernal, UT 84078 * (435) 789-1017



GREAT WESTERN OPERATING COMPANY

TOWER LD PAD
SW 1/4 NW 1/4, SECTION 21, T1S, R67W, 6th P.M.
ADAMS COUNTY, COLORADO

SURVEYED BY	G.W., J.C.	11-22-16	SCALE
DRAWN BY	J.L.G.	12-12-16	1 : 24,000
ACCESS ROAD MAP			TOPO B