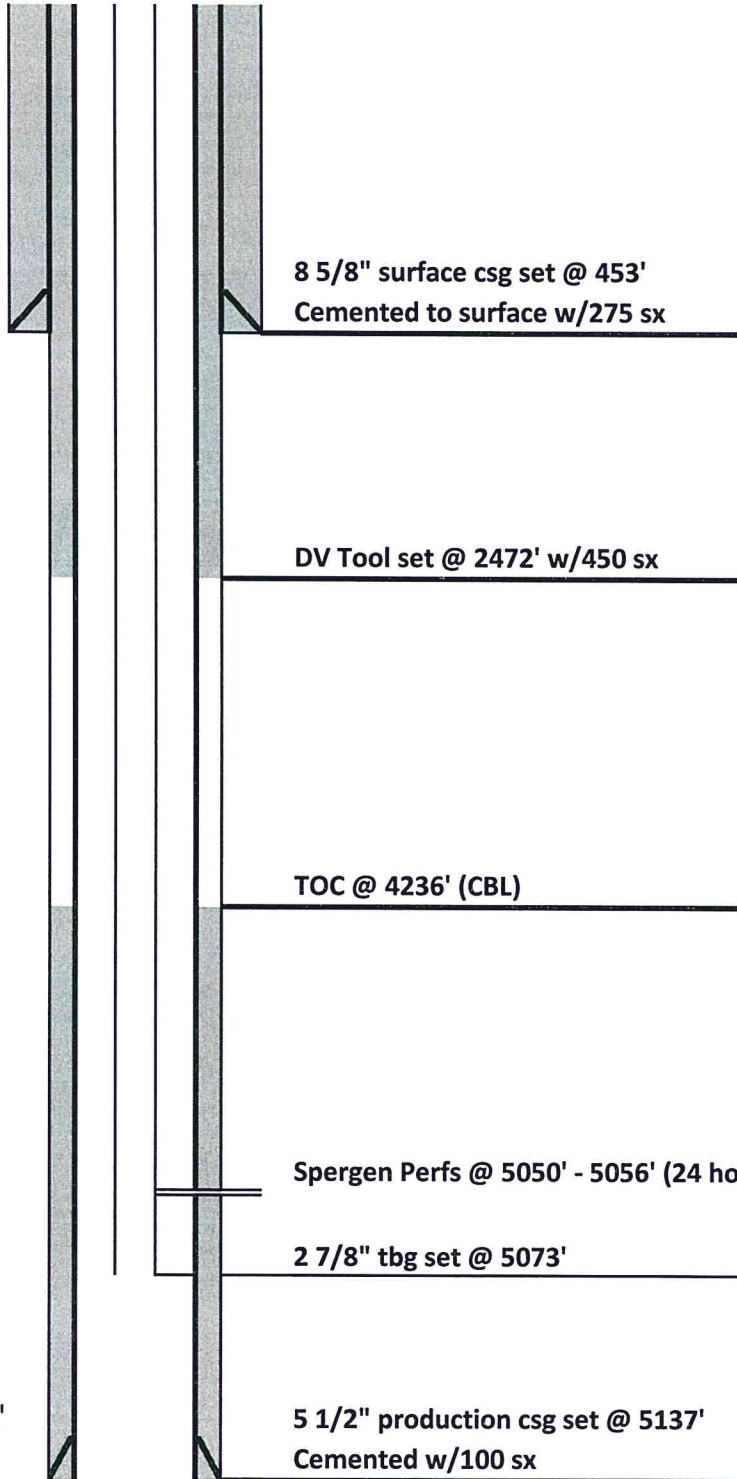




**DRILLING COMPANY, INC.**  
**WICHITA, KANSAS**

**Current Wellbore Diagram**



|            |                                              |
|------------|----------------------------------------------|
| Date:      | 6/7/2017                                     |
| Well Name: | Quiver Unit #2                               |
| Location:  | 2450' FNL & 1860' FEL<br>SW/4 NE/4 1-17S-48W |
| County:    | Kiowa                                        |
| State:     | Colorado                                     |
| API:       | 05-061-06763                                 |
| GL:        | 4138'                                        |
| KB:        | 4149'                                        |
| Spud Date: | 8/4/2000                                     |

Drilled as the UPLRC-George A #2.

PBTD = 5092'  
RTD = 5136'