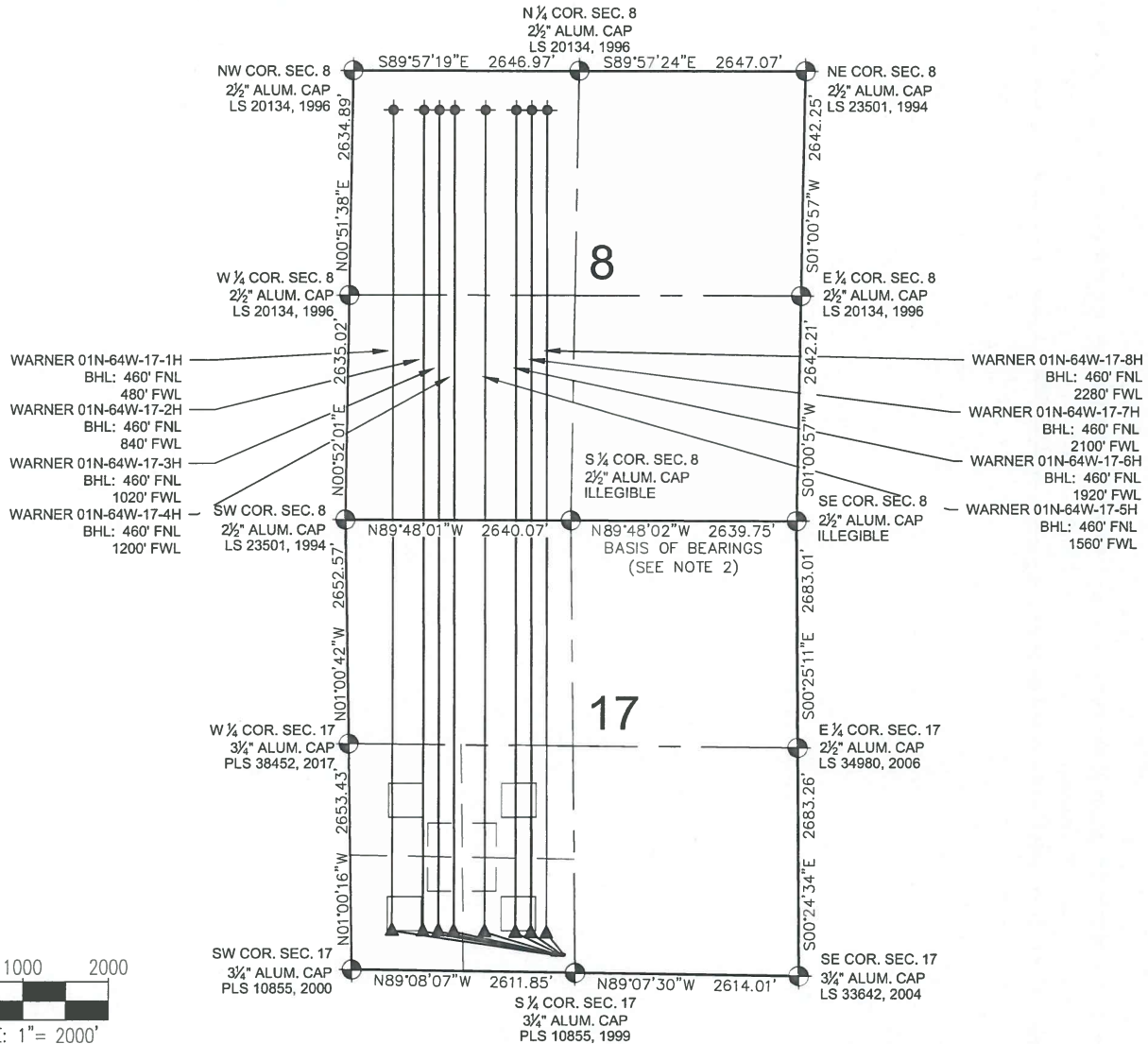


# WARNER 01N-64W-17 PAD MULTI-WELL PLAN



## LEGEND

- ◉ = EXISTING MONUMENT
- = PROPOSED WELL
- ◆ = BOTTOM HOLE
- ▲ = LANDING POINT
- LP = LANDING POINT
- BHL = BOTTOM HOLE LOCATION

## NOTES:

1. THIS FIELD SURVEY CONFORMS TO THE MINIMUM STANDARDS SET BY THE C.O.G.C.C., RULE NO. 215
2. BEARINGS ARE BASED ON THE ASSUMPTION THAT THE SOUTH LINE OF THE SOUTHEAST QUARTER OF SECTION 8, BEARS N89°48'02\"W BETWEEN THE MONUMENTS SHOWN HEREON.
3. ALL DISTANCES AND BEARINGS SHOWN HEREON ARE GROUND VALUES AS GPS MEASURED IN THE FIELD, WITH TIES TO WELLS MEASURED PERPENDICULAR TO SECTION LINES. THIS LOW DISTORTION PROJECTION (LDP) IS BASED ON THE NORTH AMERICAN DATUM OF 1983, U.S. SURVEY FOOT WITH A LATITUDE ORIGIN OF 40.040652 °N AND A LONGITUDE OF 104.546537°W AND A SCALE FACTOR ON THE CENTRAL MERIDIAN OF 1.000237(EXACT). THE LDP BASIS OF BEARINGS IS GEODETIC NORTH.
4. FIELD VERIFICATION OF MONUMENTS COMPLETED WITHIN 1 YEAR OF SIGNATURE DATE.

## NOTES:

- WARNER 01N-64W-17-1H TO BE AT 210' FSL & 2341' FWL. BOTTOM HOLE AT 460' FNL & 480' FWL, SEC. 8.
- WARNER 01N-64W-17-2H TO BE AT 210' FSL & 2361' FWL. BOTTOM HOLE AT 460' FNL & 840' FWL, SEC. 8.
- WARNER 01N-64W-17-3H TO BE AT 210' FSL & 2381' FWL. BOTTOM HOLE AT 460' FNL & 1020' FWL, SEC. 8.
- WARNER 01N-64W-17-4H TO BE AT 210' FSL & 2401' FWL. BOTTOM HOLE AT 460' FNL & 1200' FWL, SEC. 8.
- WARNER 01N-64W-17-5H TO BE AT 210' FSL & 2421' FWL. BOTTOM HOLE AT 460' FNL & 1560' FWL, SEC. 8.
- WARNER 01N-64W-17-6H TO BE AT 210' FSL & 2441' FWL. BOTTOM HOLE AT 460' FNL & 1920' FWL, SEC. 8.
- WARNER 01N-64W-17-7H TO BE AT 210' FSL & 2461' FWL. BOTTOM HOLE AT 460' FNL & 2100' FWL, SEC. 8.
- WARNER 01N-64W-17-8H TO BE AT 210' FSL & 2481' FWL. BOTTOM HOLE AT 460' FNL & 2280' FWL, SEC. 8.

PREPARED BY:



7535 Hilltop Circle  
Denver, CO 80221  
(303) 928-7128  
www.ascentgeomatics.com

FIELD DATE:  
03-17-17

DRAWING DATE:  
05-16-17

BY:  
MDC

CHECKED BY:  
MMP

SITE NAME:

WARNER 01N-64W-17 PAD

SURFACE LOCATION:

SE 1/4 SW 1/4 SEC. 17, T1N, R64W, 6TH P.M.  
WELD COUNTY, COLORADO

PREPARED FOR:

