

COMPANY DELTA PETROLEUM CORPORATION WELL DELTA 27-421									
FIELD NORTH VEGA CNTY MESA STATE CO									
COMPANY DELTA PETROLEUM CORPORATION WELL DELTA 27-421 FIELD NORTH VEGA COUNTY MESA STATE COLORADO									
PERM. DATUM GROUND LEVEL LOG MEASURED FROM K.B. 12 FT. ABOVE PERMANENT DATUM DRILLING MEASURED FROM KELLY BUSHING					ELEV. 7665' ELEV. 7677' D.F. 7676' G.L. 7665'				
LOCATION: BHL: 990' FEL & 1620' FNL API: # 05-077-09334-00 SEC. 27 TWP. 09S RGE. 93W					OTHER SERVICES: JB/GR 3.875" @ 8261' PND				
DATE	23-DEC-2007								
RUN NO.	ONE								
DEPTH DRILLER	8448'								
DEPTH LOGGER	8263'								
BTM. LOG INTERVAL	8257'								
TOP LOG INTERVAL	3650'								
OPEN HOLE SIZE	7.875"								
TYPE FLUID	WATER								
DENS.	8.3				N/A				
MAX. REC. TEMP.	247 DEG.								
EST. CEMENT TOP	4152'								
TIME WELL READY	ROA								
TIME LOGGER ON BTM.	SEE LOG								
EQUIP. NO.	14102								
LOCATION	GRAND JUNCTION								
RECORDED BY	BRUCE MILLER								
WITNESSED BY	DALE GOWEN								
BOREHOLE RECORD					TUBING RECORD				
RUN NO.	BIT	FROM	TO	SIZE	WGT.	FROM	TO		
ONE	24"	SURF	60'						
TWO	12.25	60'	2000'						
THREE	7.875	2000'	8448'						
CASING RECORD	SIZE	WT/FT	GRADE	TYPE JOINT	TOP		BOTTOM		
SURFACE STRING	16"				SURF		60'		
PROT. STRING	8.625"	24#	J-55		SURF		2000' ?		
PROD. STRING	4.500"	11.6	N-80		SURF		8448' ?		
LINER									
SEE REMARKS									

All interpretations of log data are opinions based on inferences from electrical or other measurements. We do not guarantee the accuracy or correctness of any interpretation or recommendation and we shall not be liable or responsible for any loss, cost, damages or expenses incurred or sustained by anyone resulting from any interpretation or recommendation made by any of our employees or agents.

[illegible]

REMARKS

LOGGED WITH 0 PSI @ SURFACE

DEPTH SCALE: 5":100'

VERSION: 70605113R"

MAIN PASS

142242 CBLMAINFNL

FINISH DEPTH: 3615.9 Feet DIRECTION: UP DATE: 12/23/2007 TIME: 22:18 MODE: ORIGINAL

Collar Locator

-1000 Millivolts 110

Gamma Ray

0 API 150

TRAVEL TIME 3FT

305 Microseconds 205

Tension

0 2200

AMPLITUDE 3FT X5

0 Millivolts 20

AMPLITUDE 3FT

0 Millivolts 100

FREE PIPE GATE

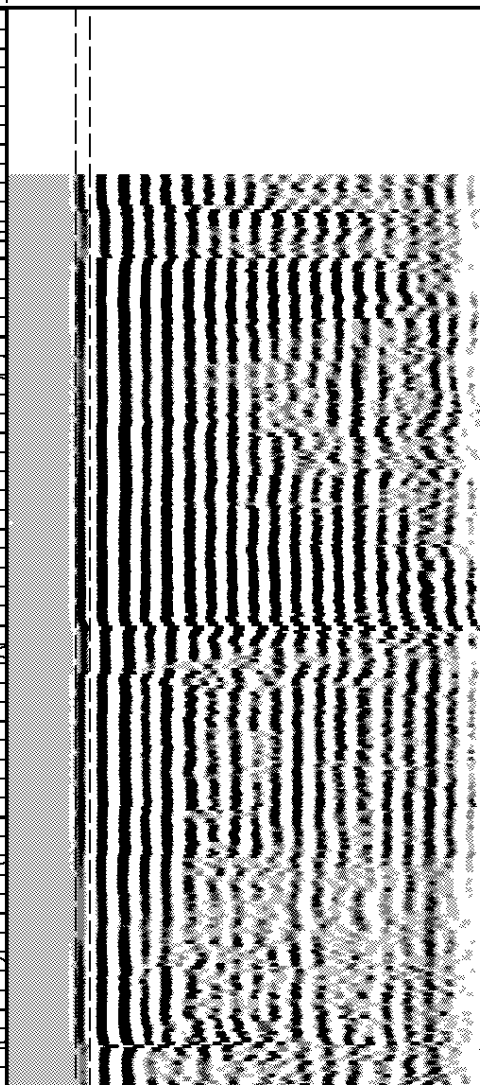
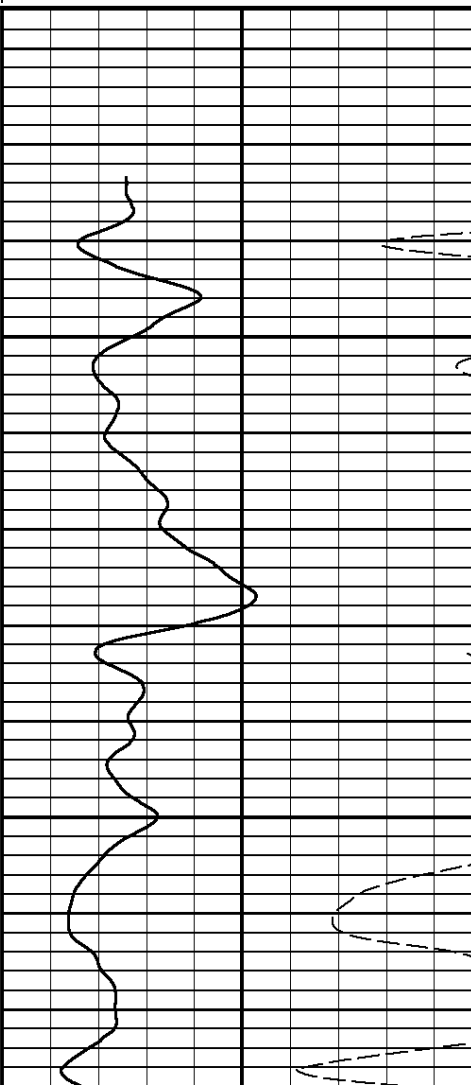
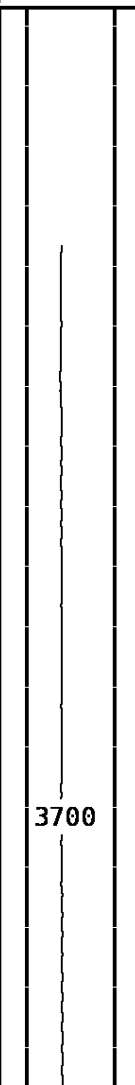
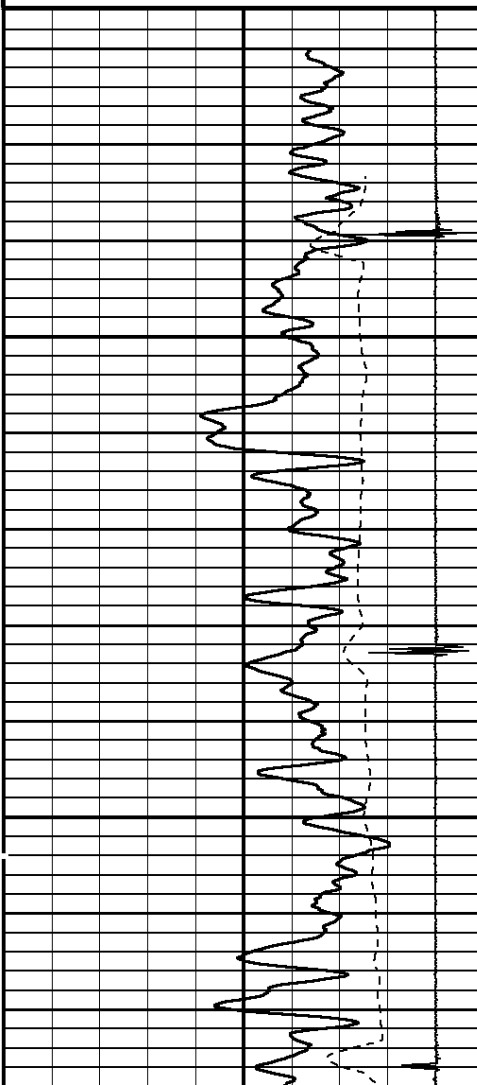
200 Microseconds 1200

FREE PIPE GATE

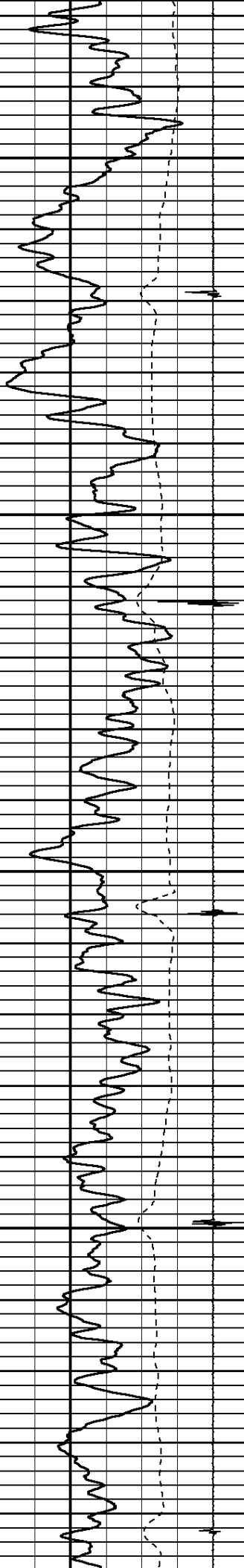
200 Microseconds 1200

VARIABLE DENSITY 5FT

200 Microseconds 1200

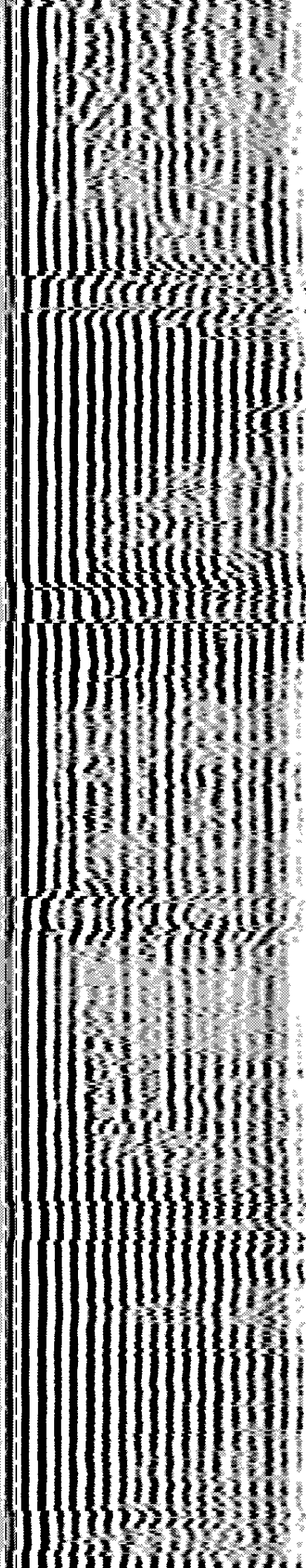
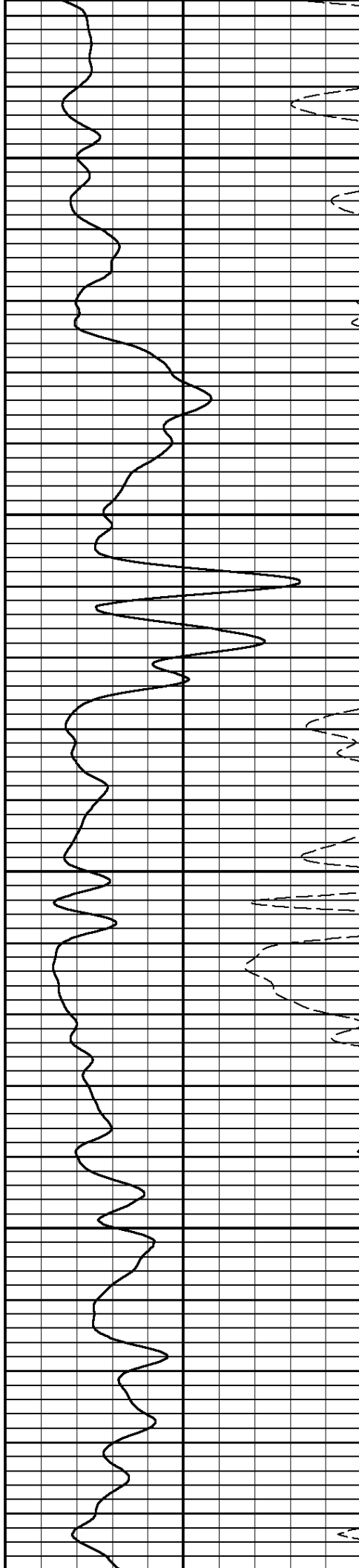


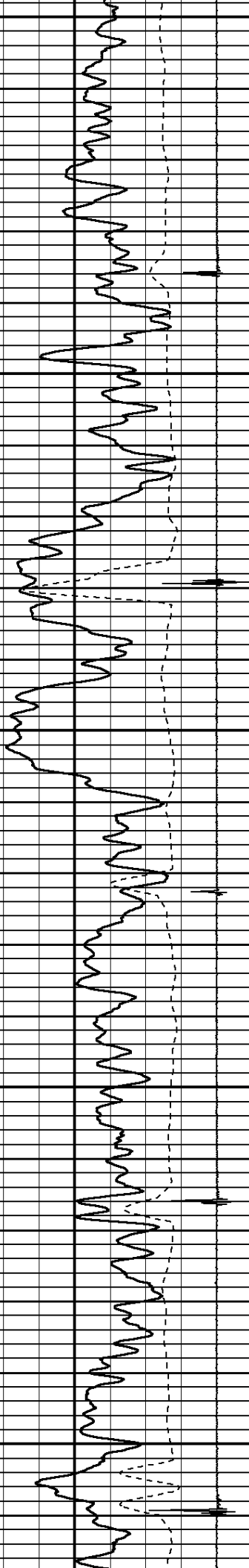
3700



3800

3900

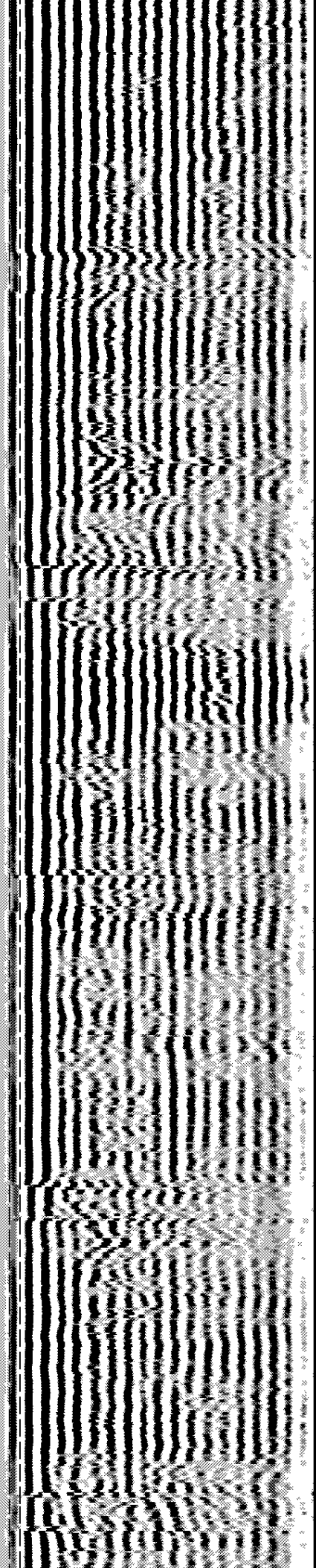
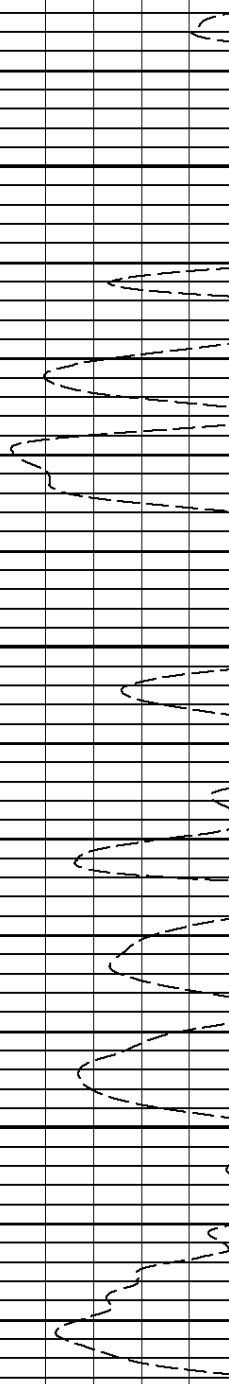


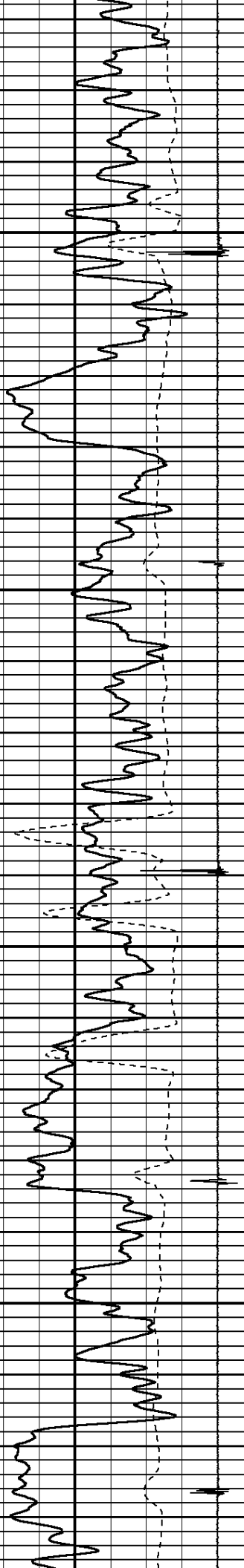


4000

4100

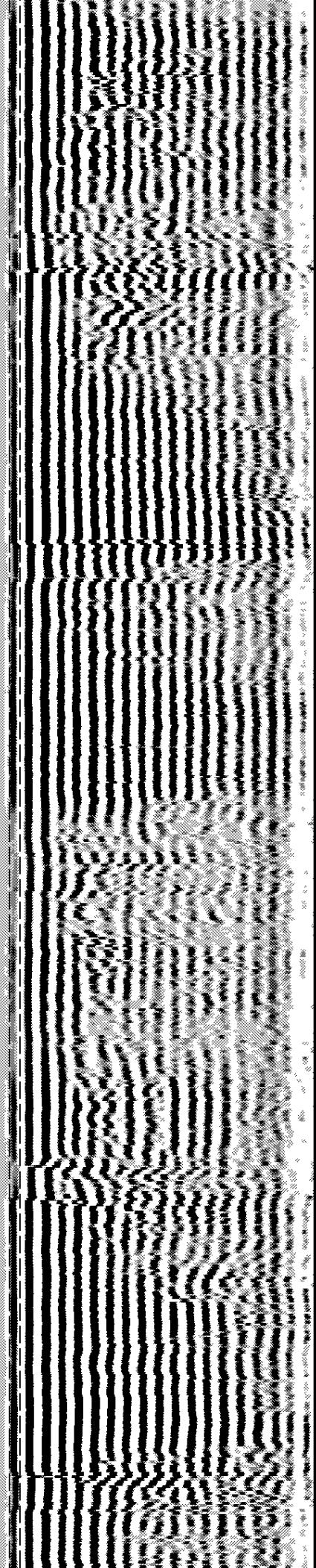
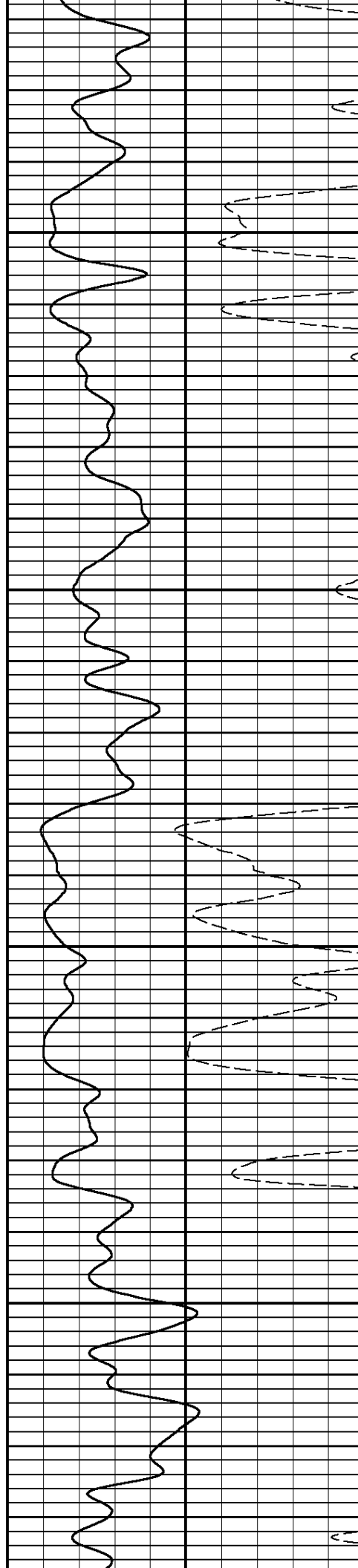
<<EST. CEMENT TOP>>

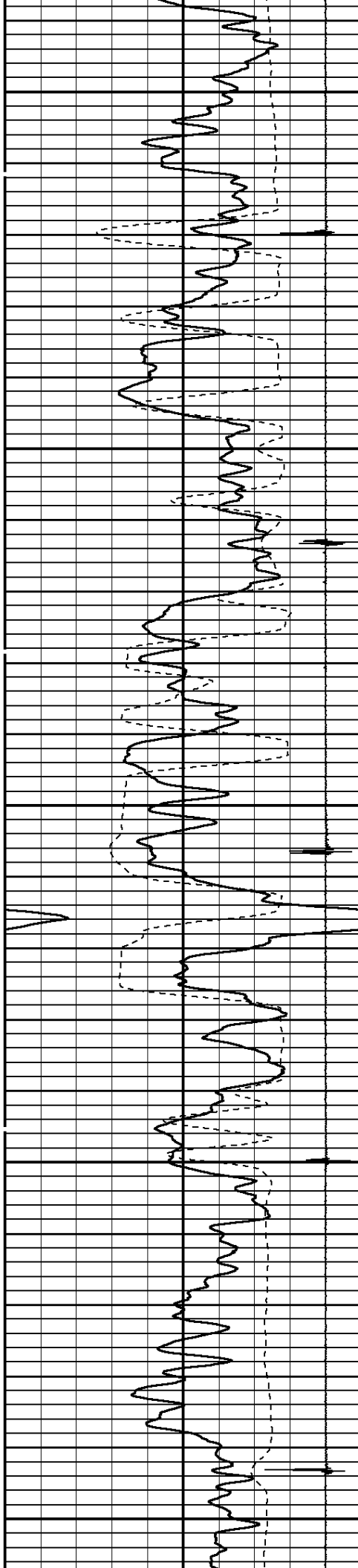




4200

4300

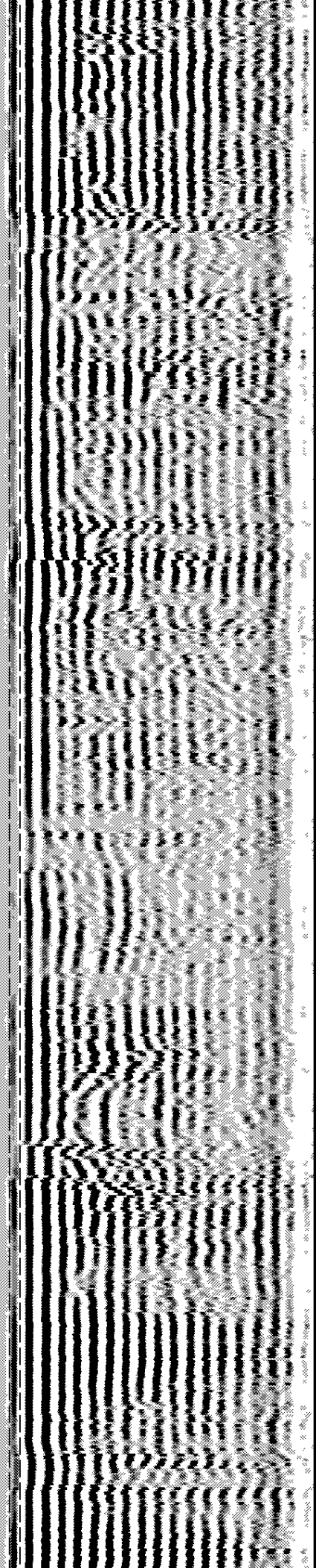
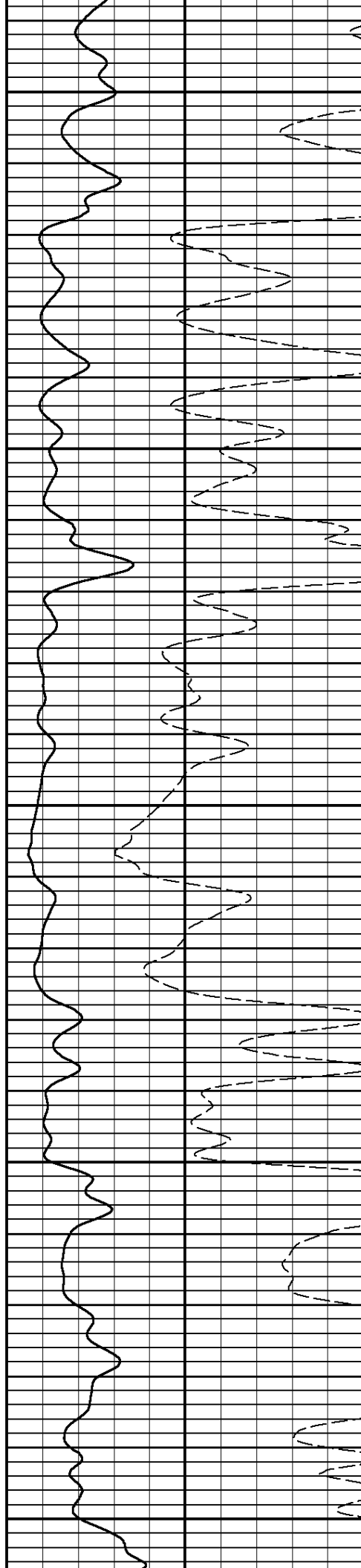


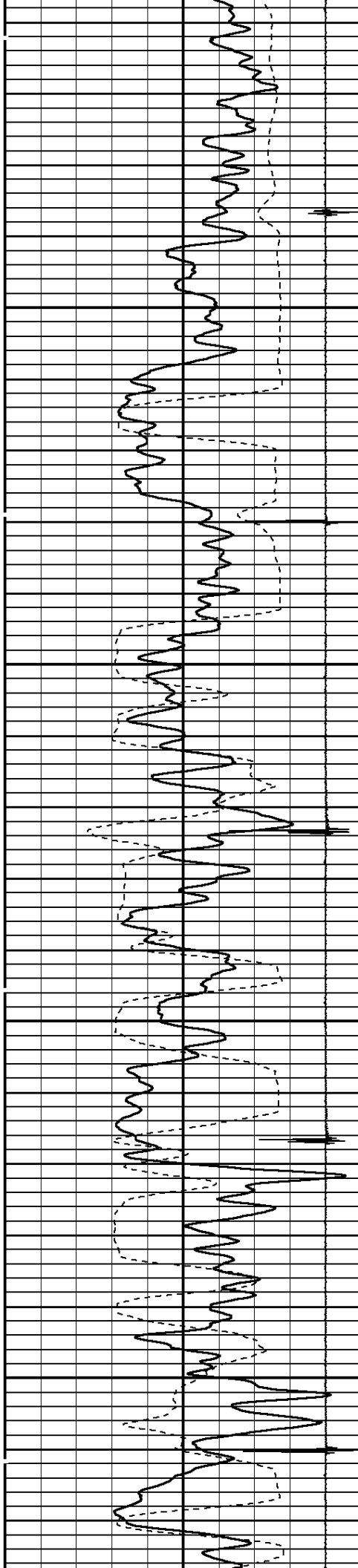


4400

4500

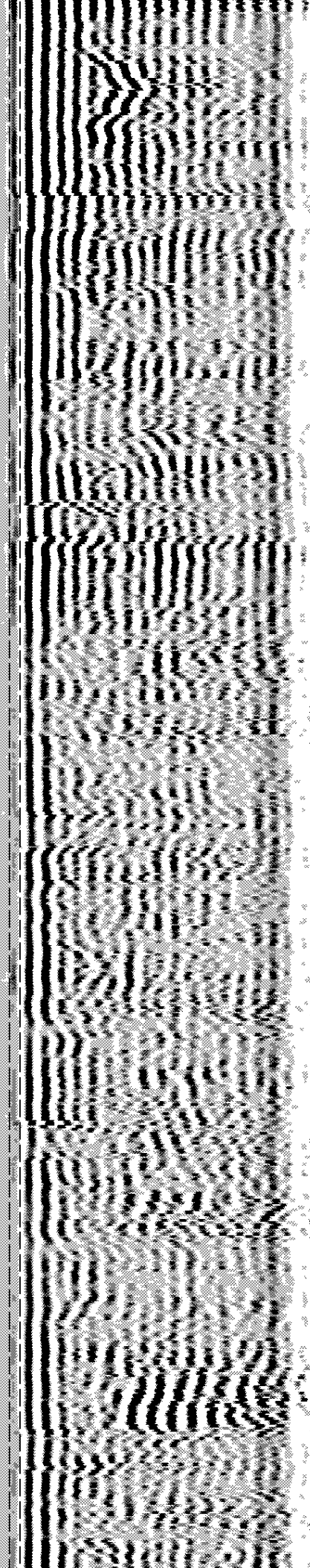
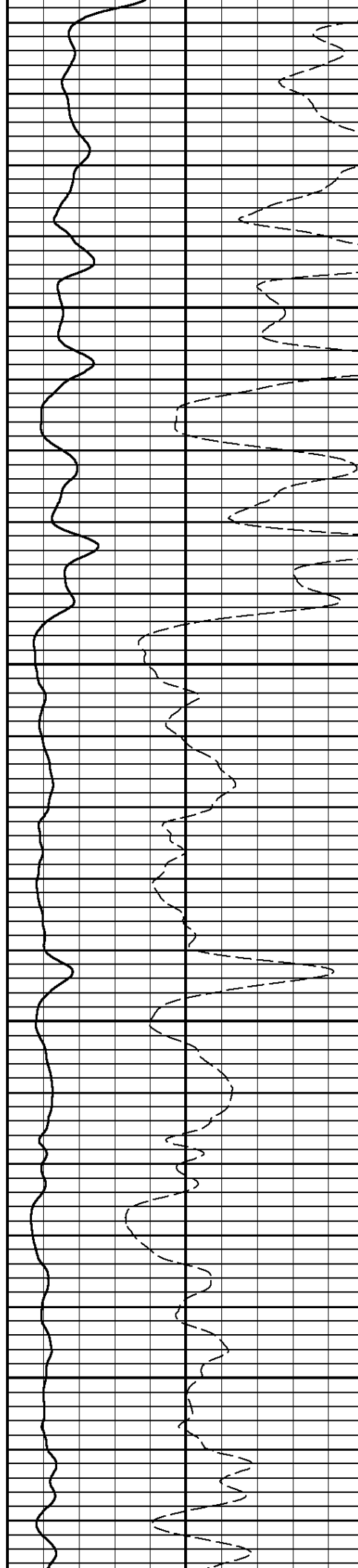
4600

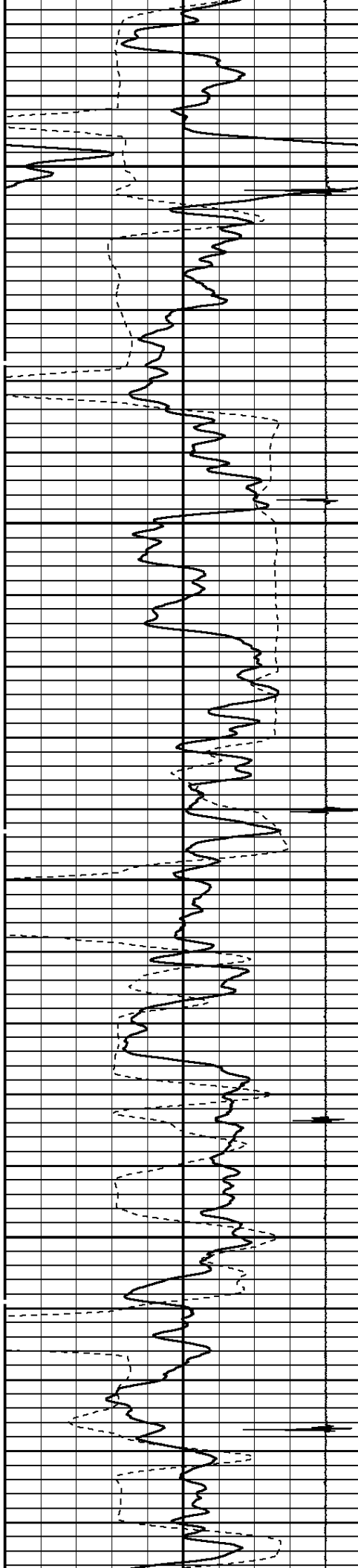




4700

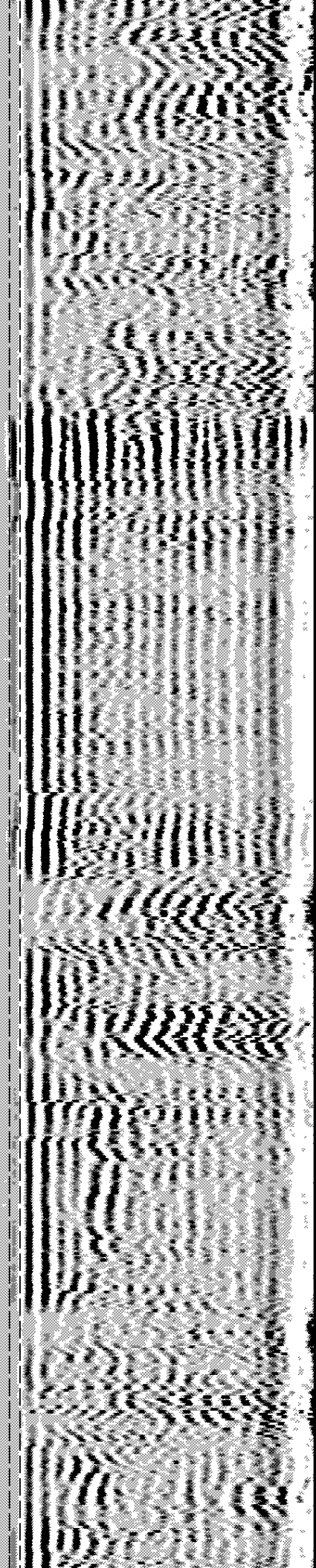
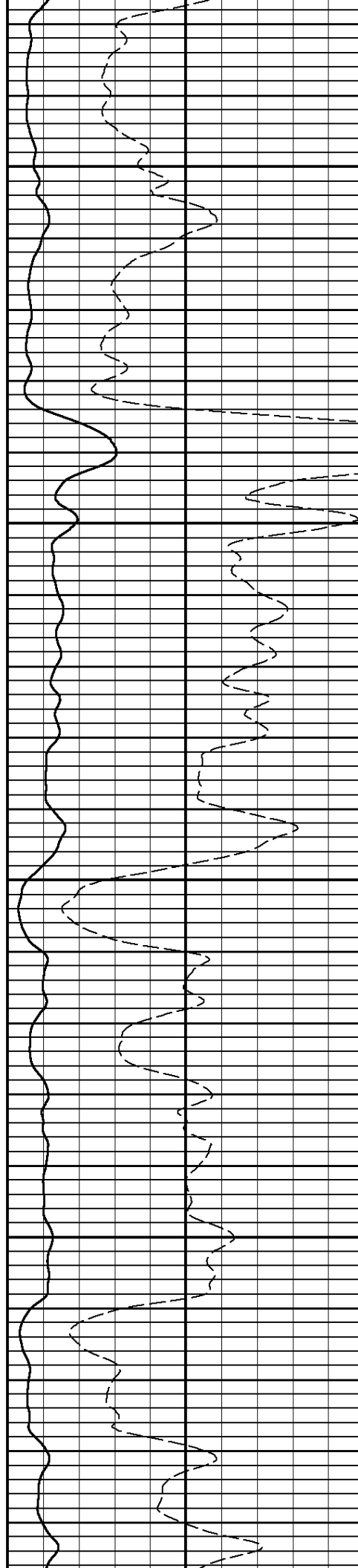
4800

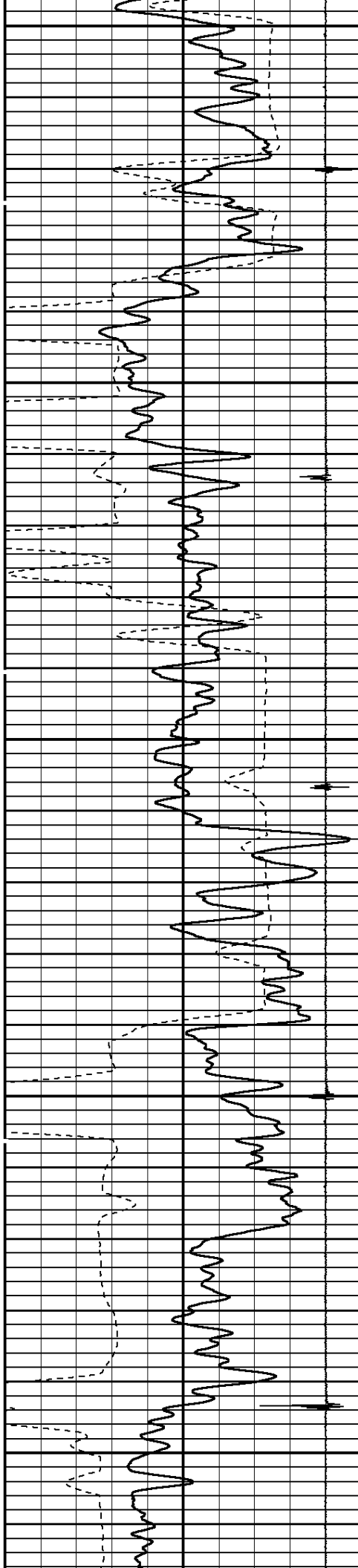




4900

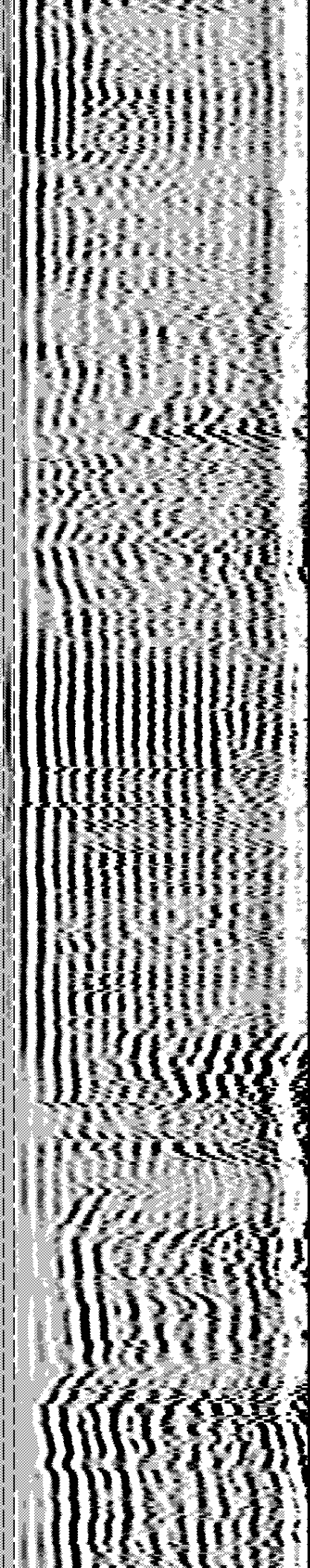
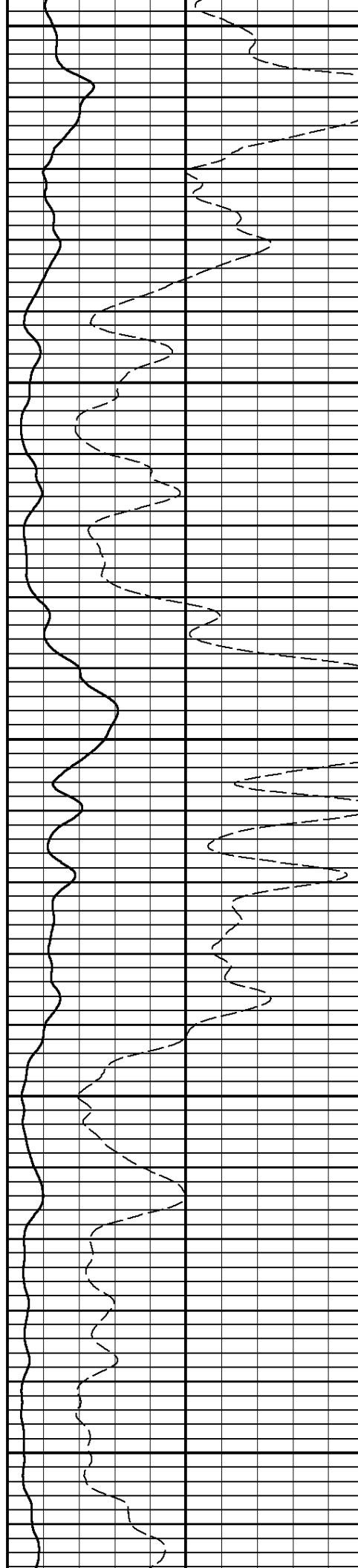
5000

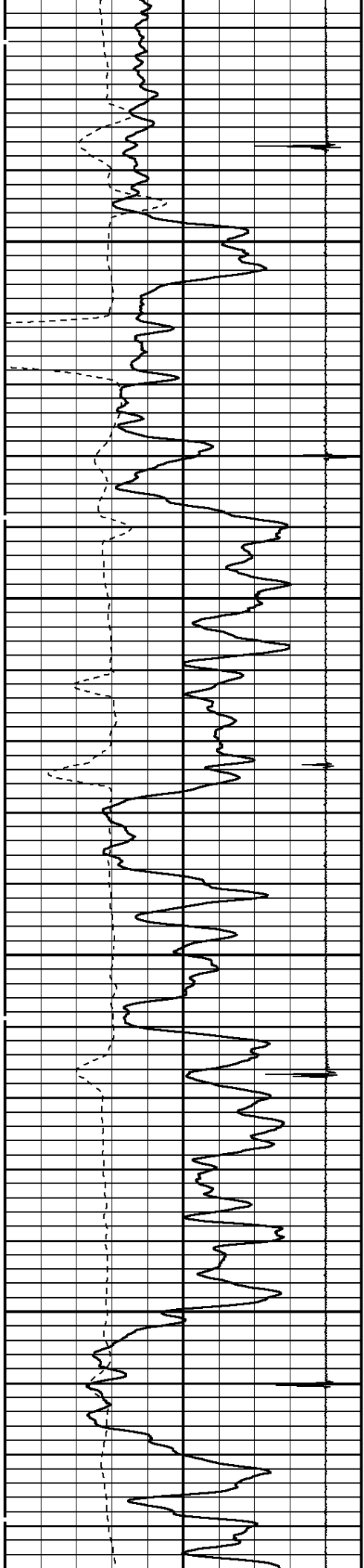




5100

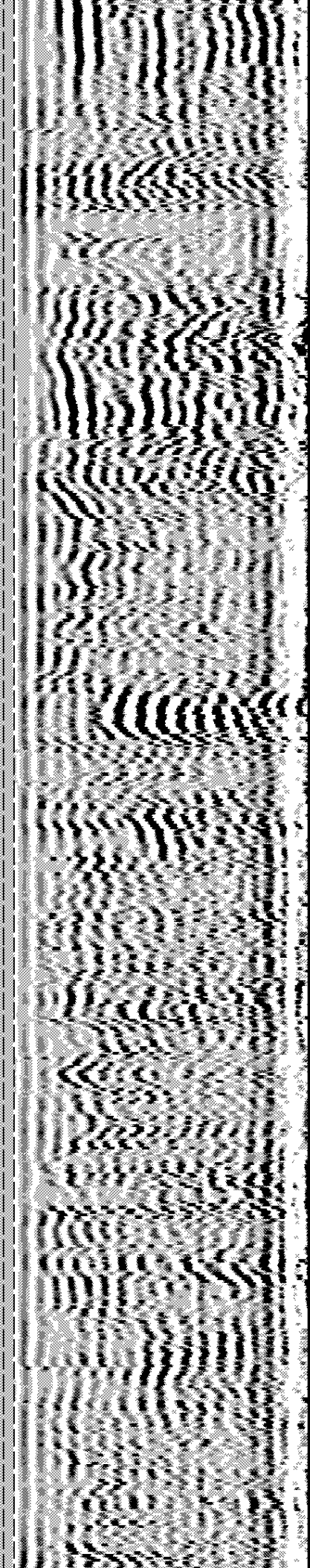
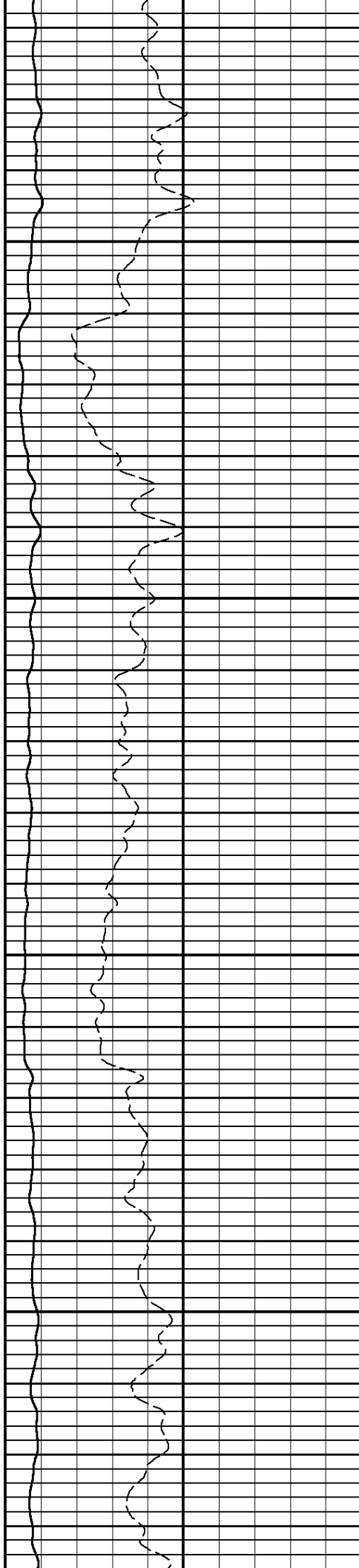
5200

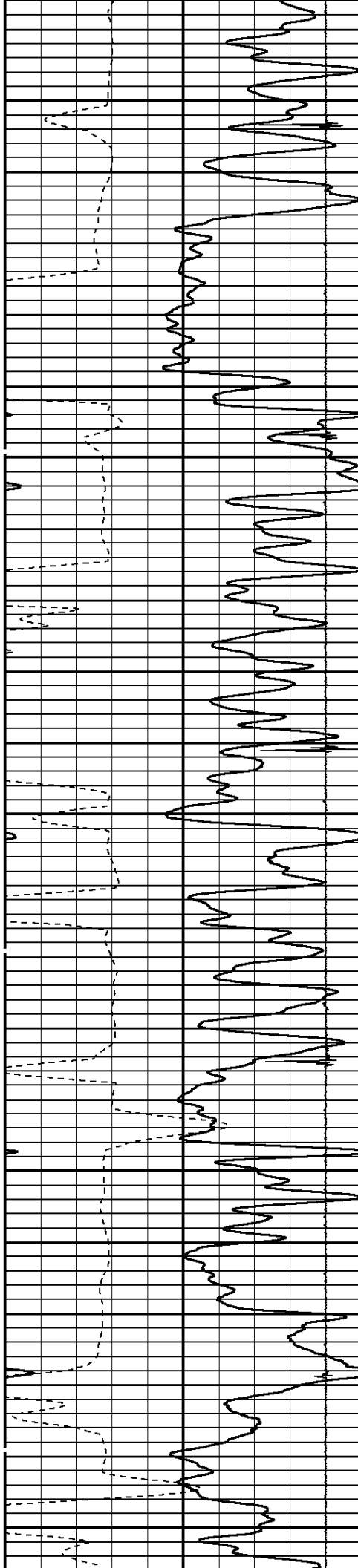




5300

5400

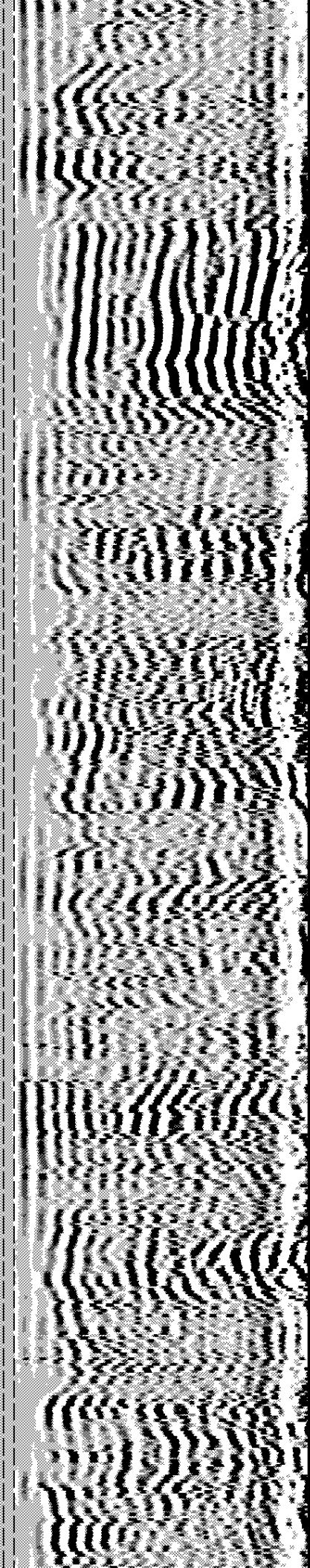
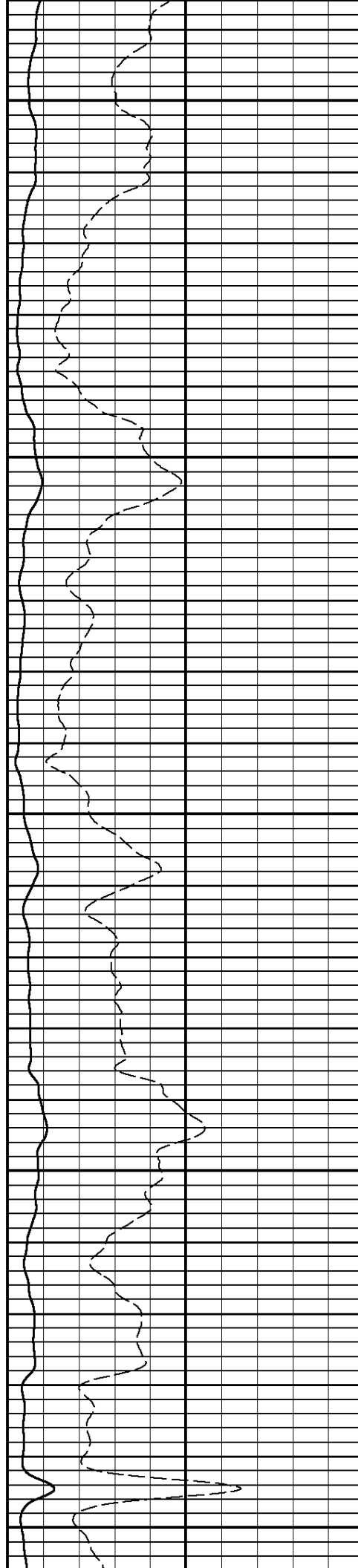


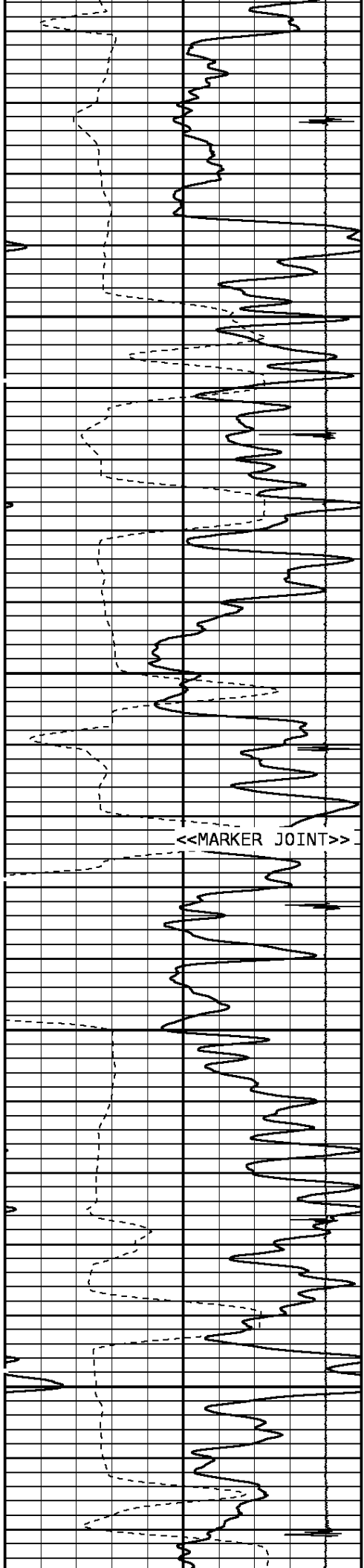


5500

5600

5700

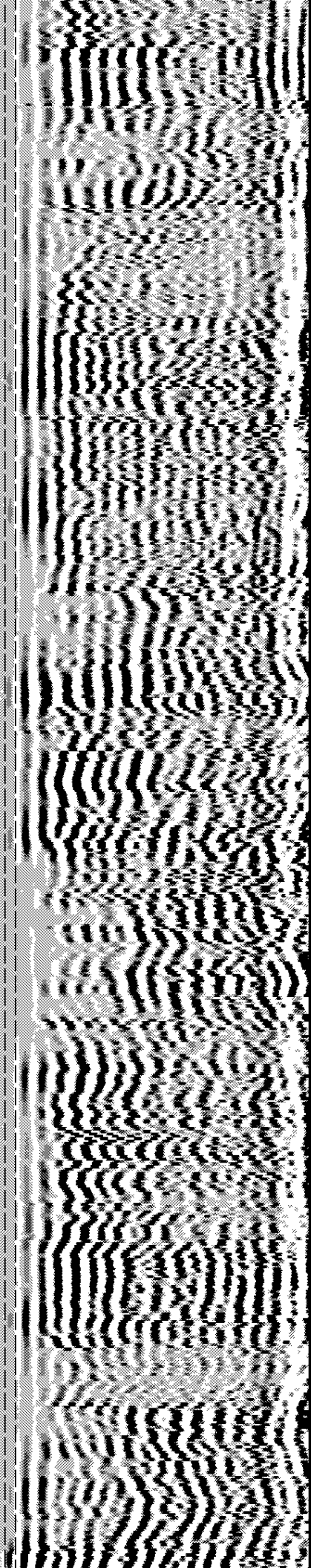
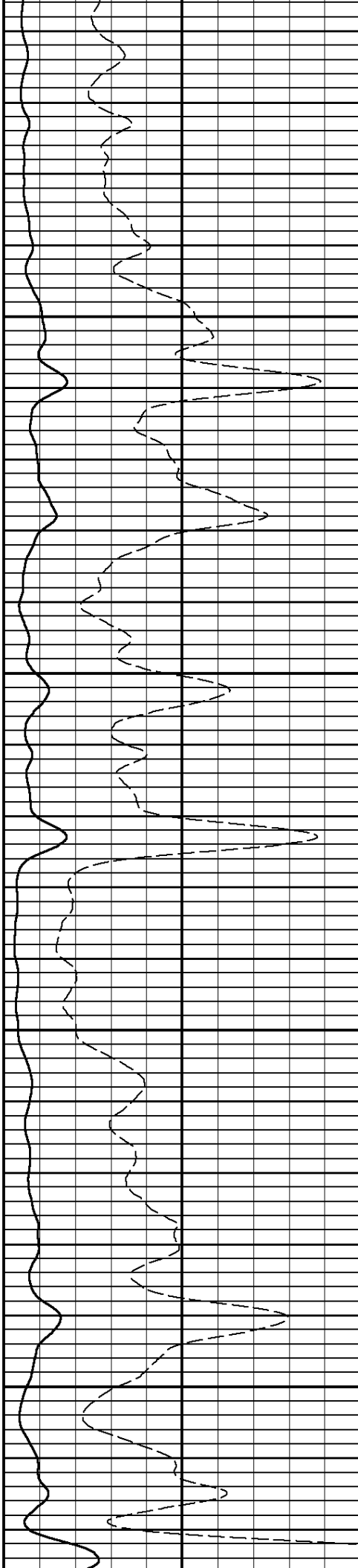


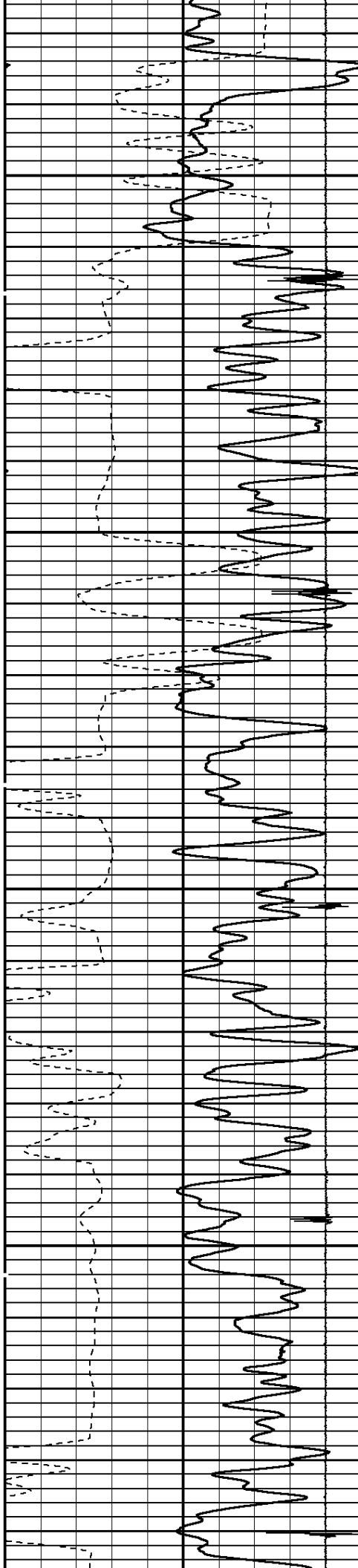


5800

<<MARKER JOINT>>

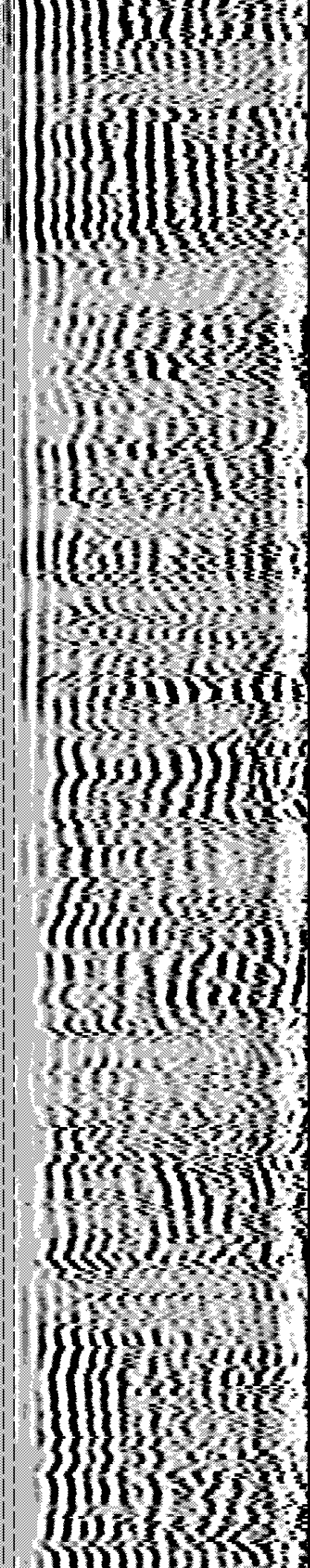
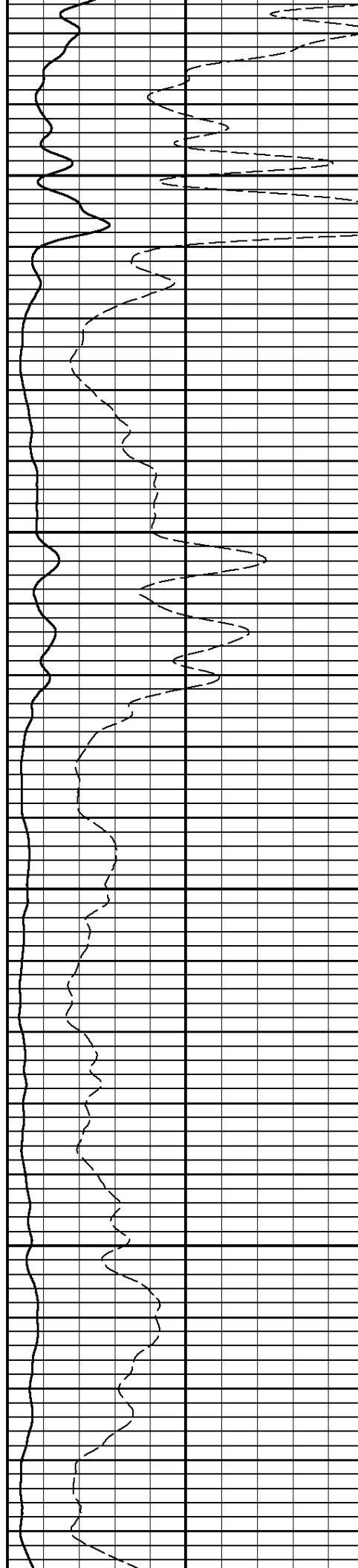
5900

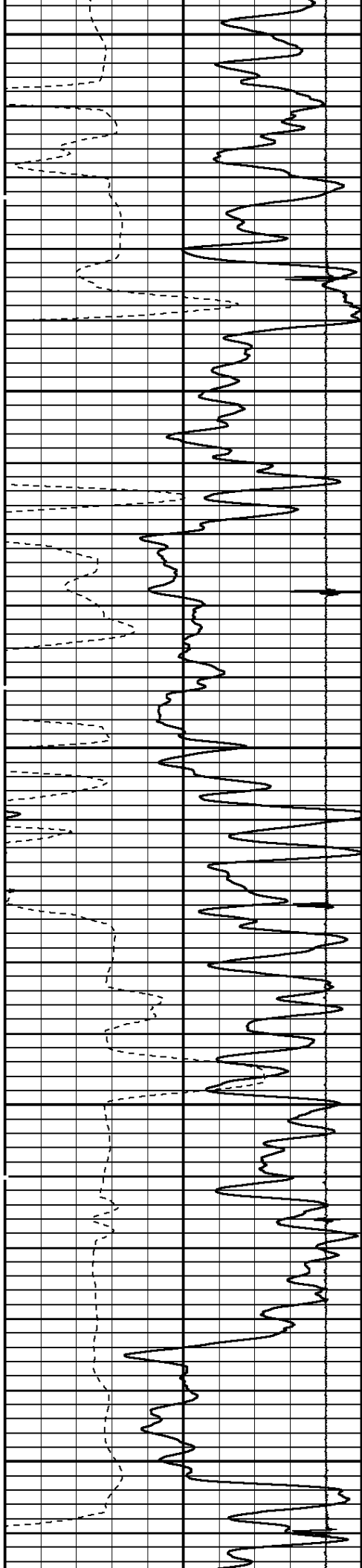




6000

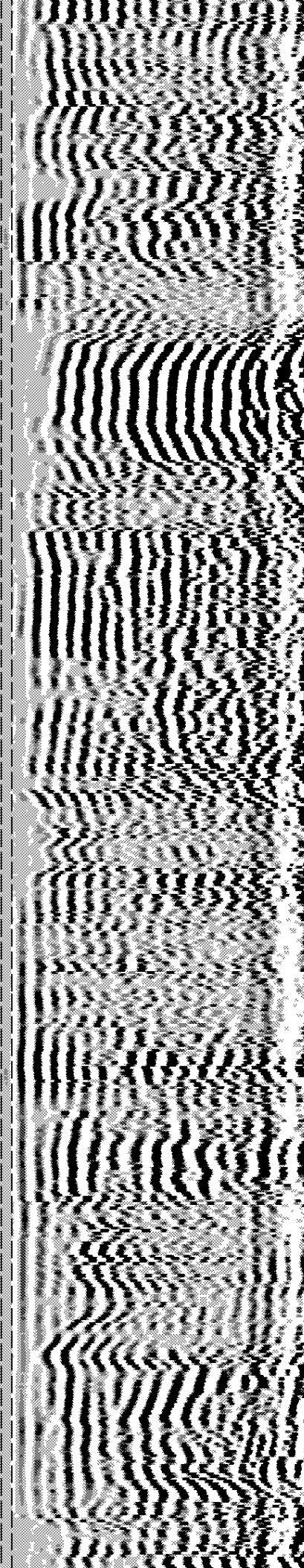
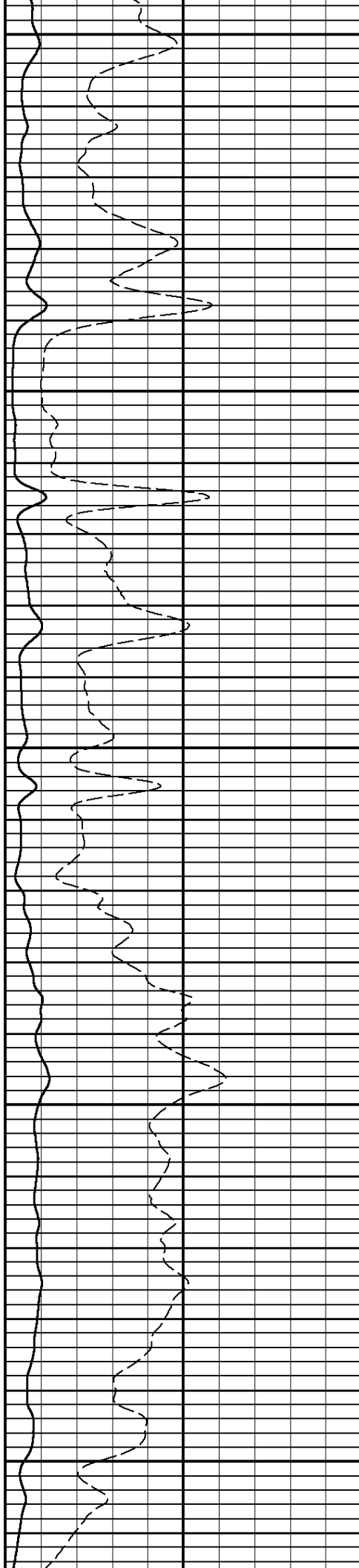
6100

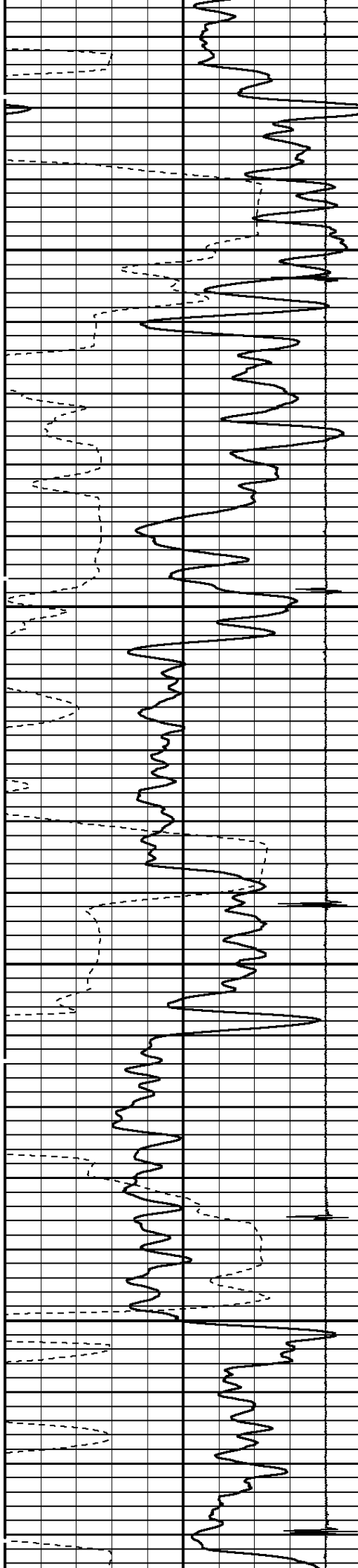




6200

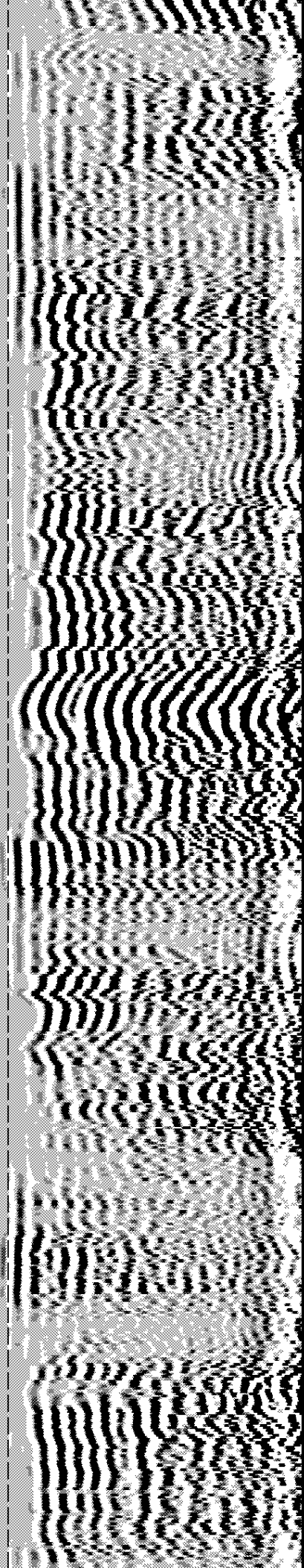
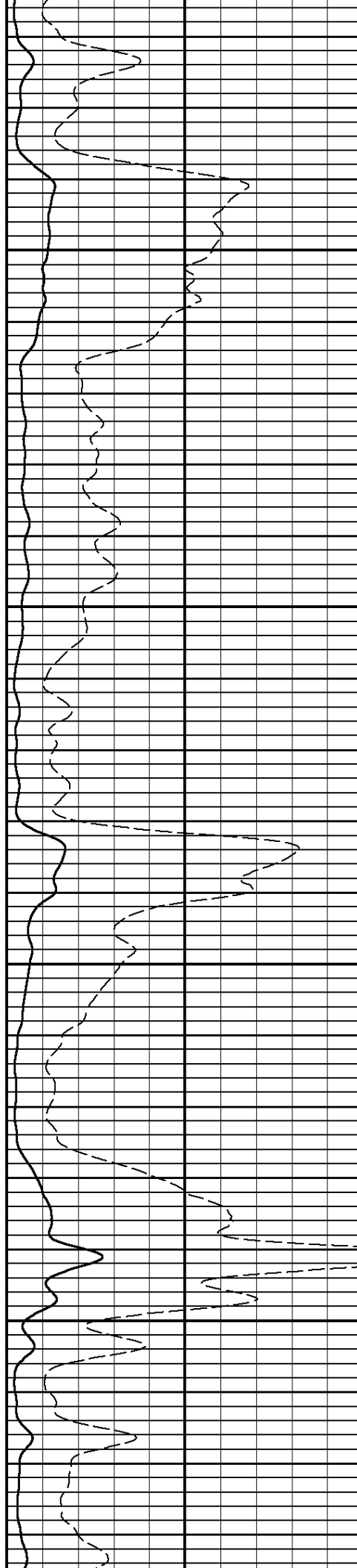
6300

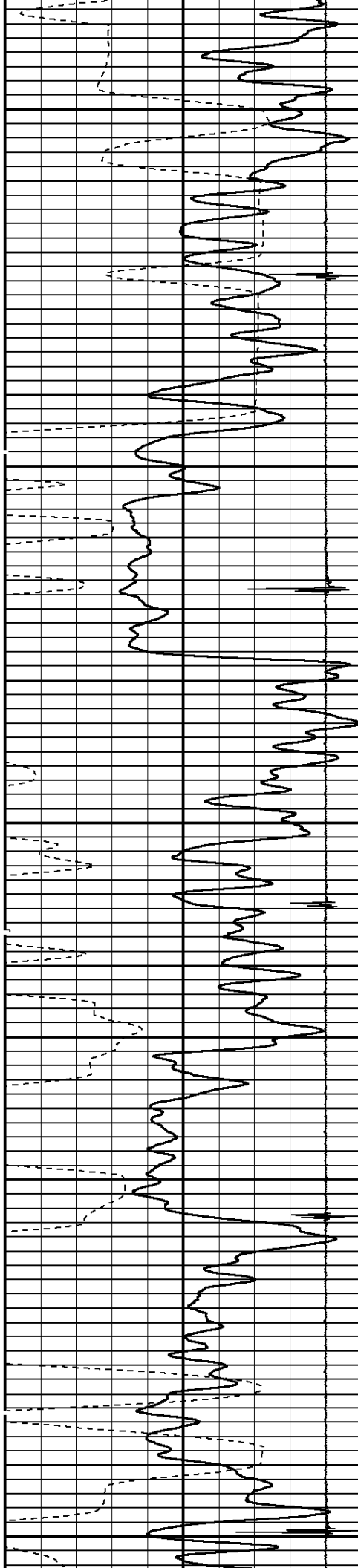




6400

6500

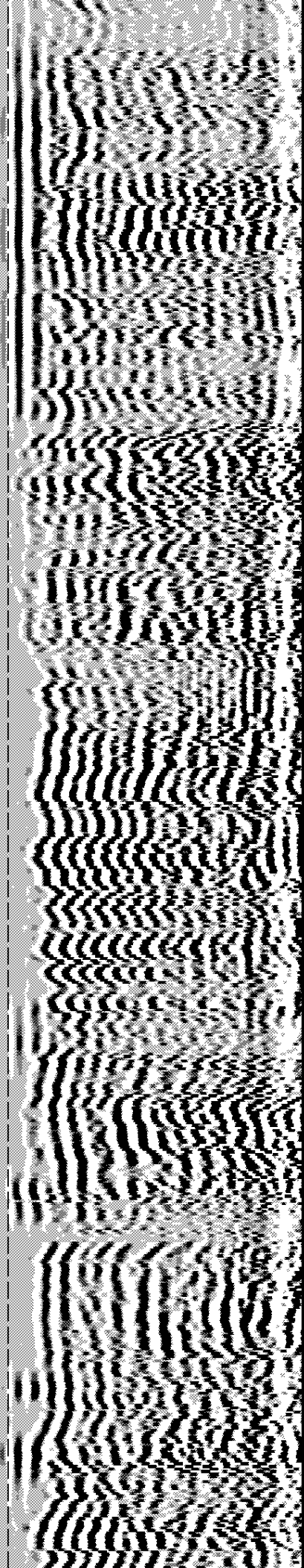
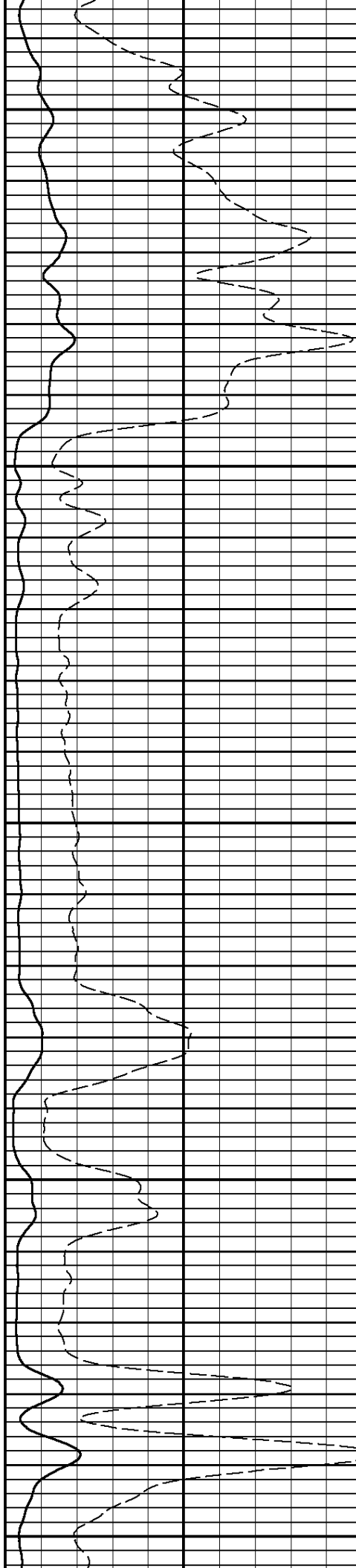


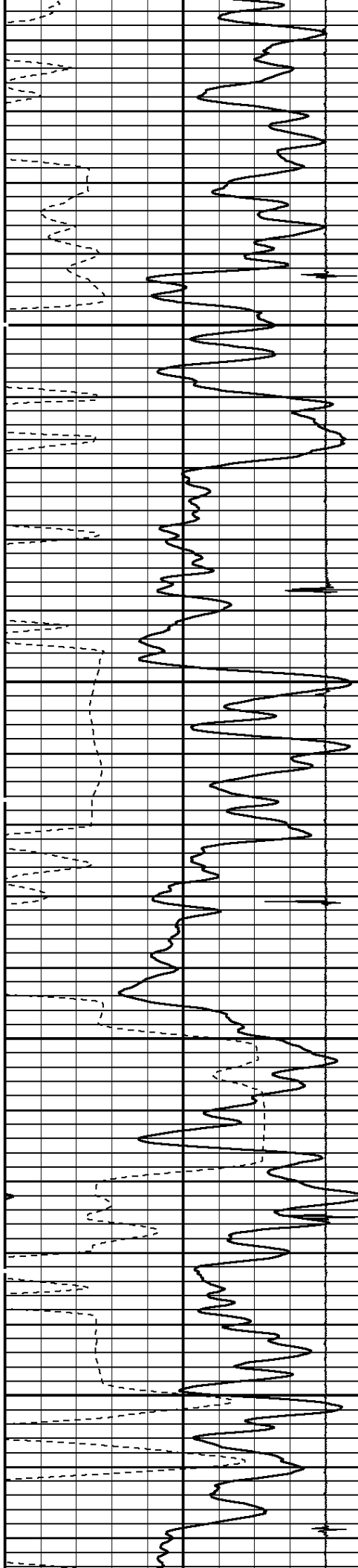


6600

6700

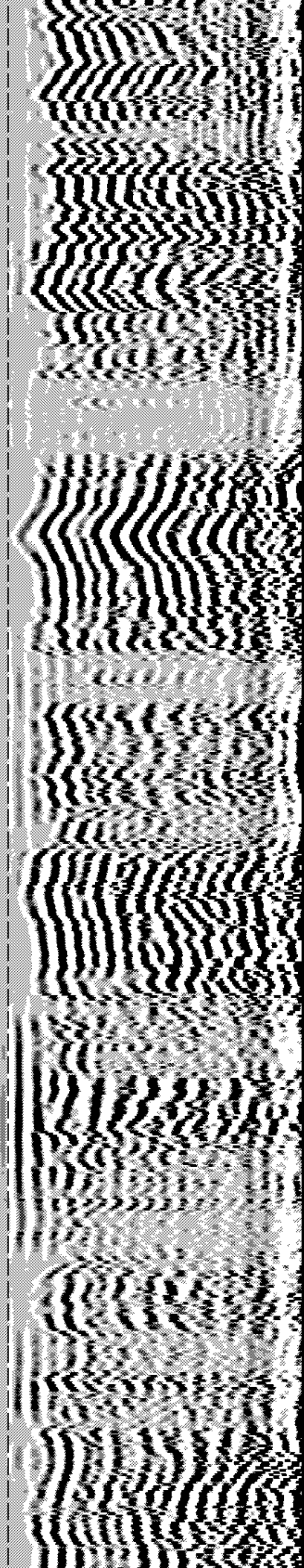
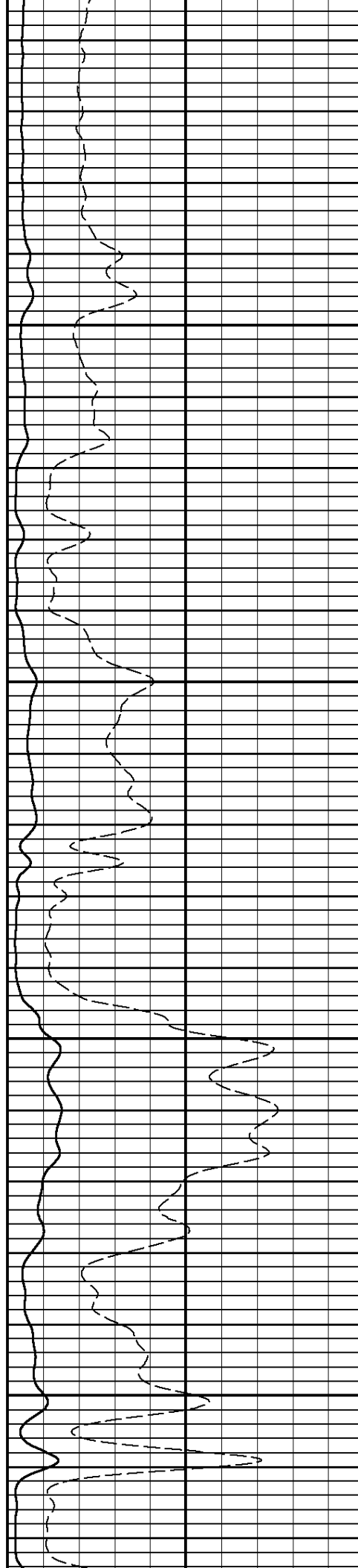
6800

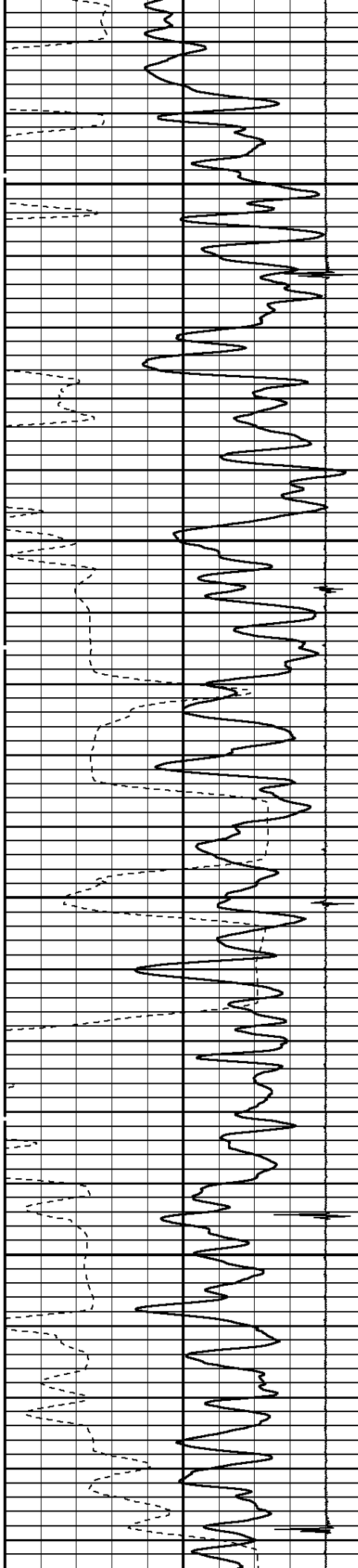




6900

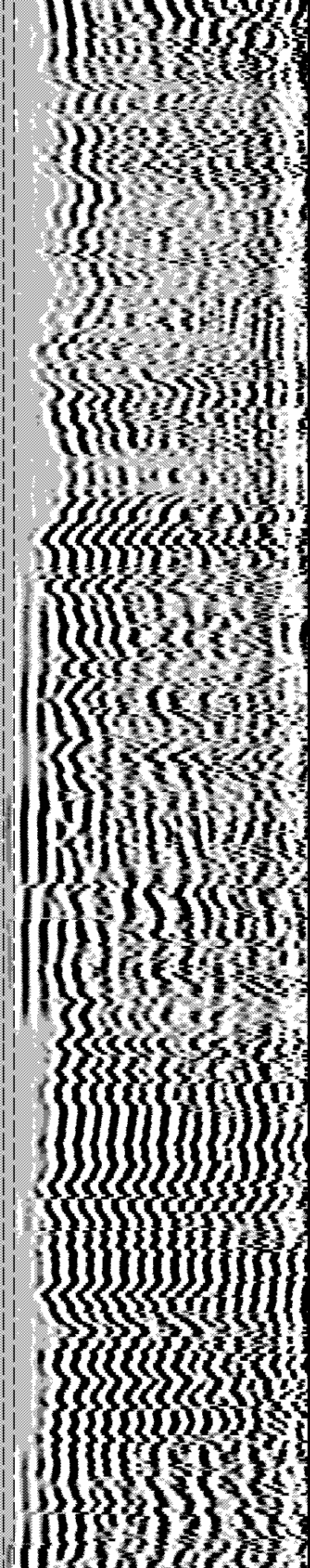
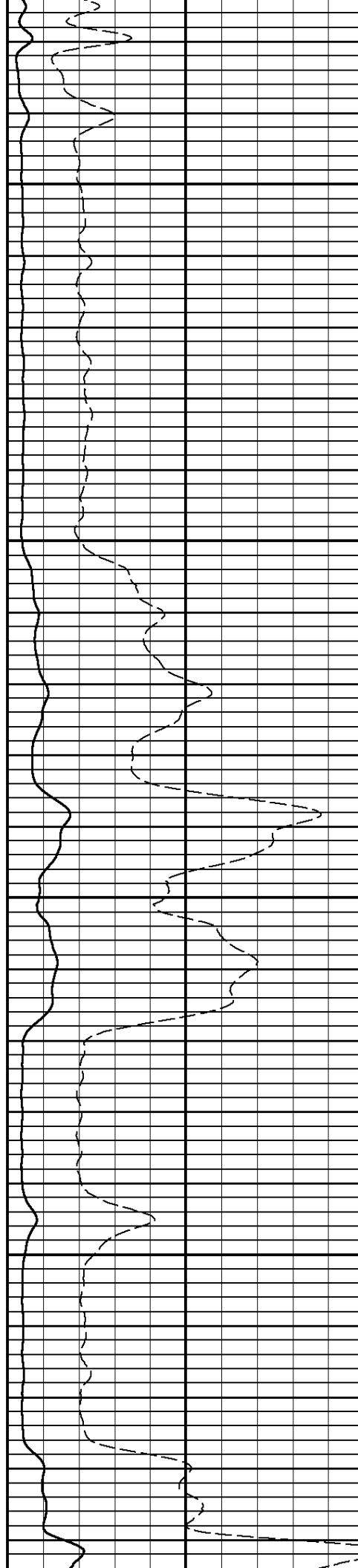
7000

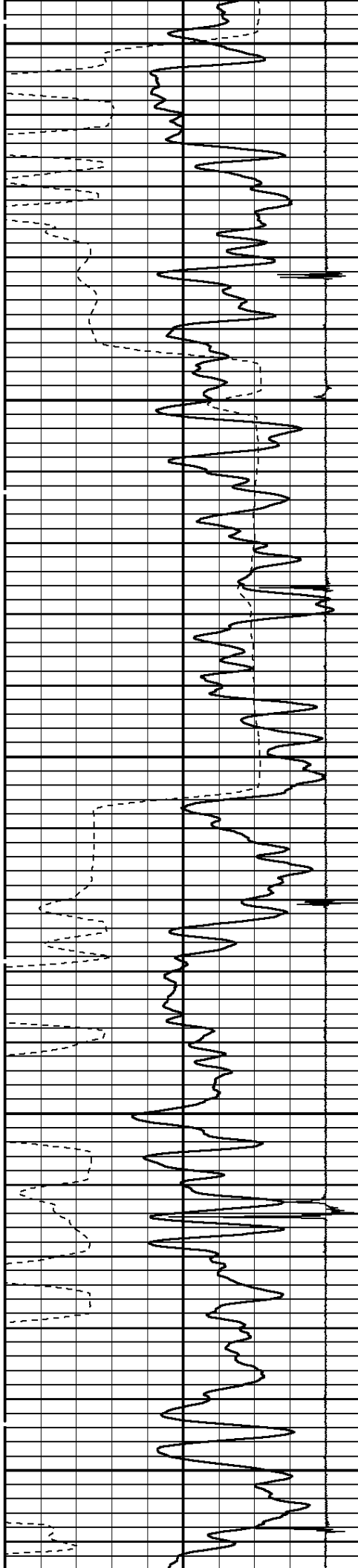




7100

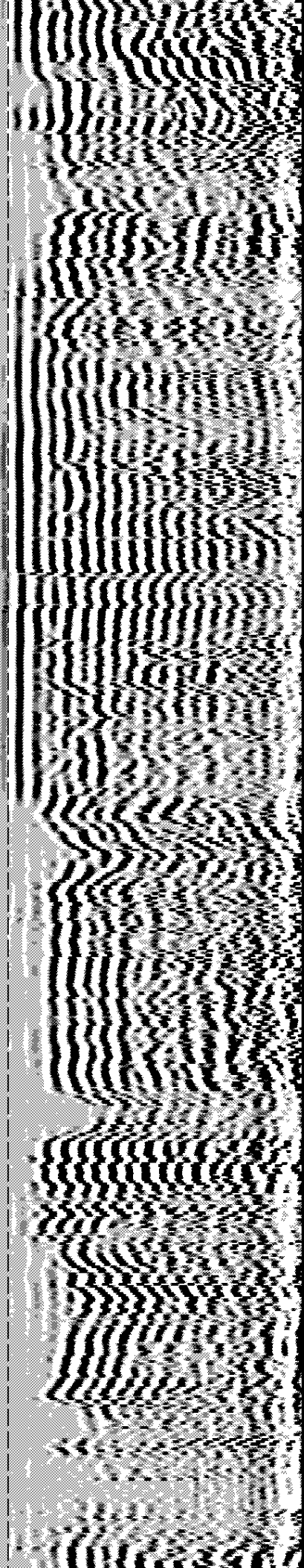
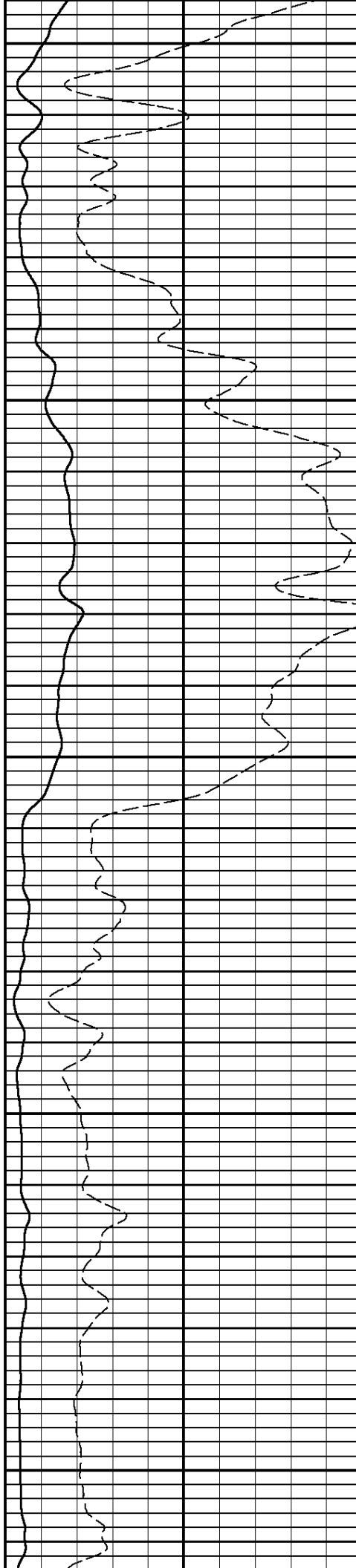
7200

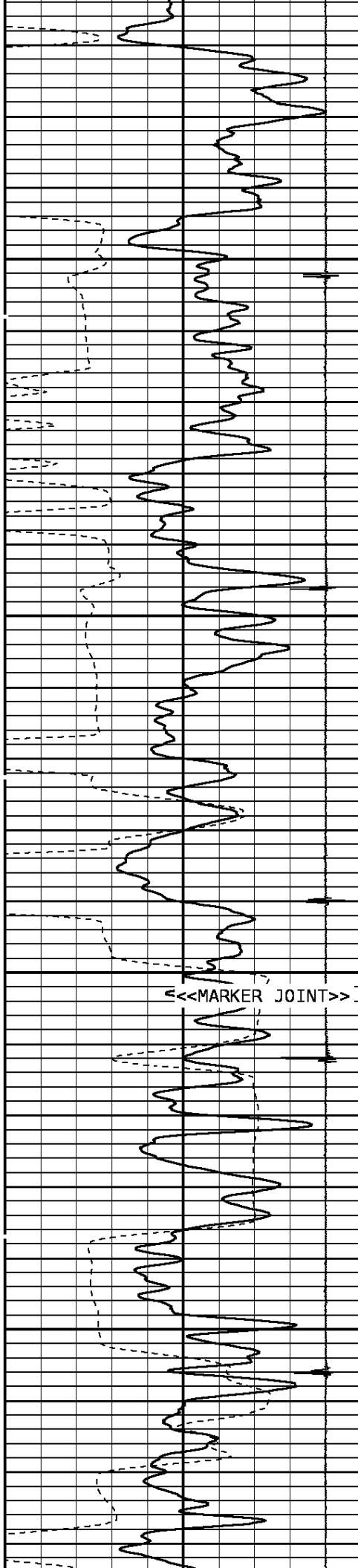




7300

7400

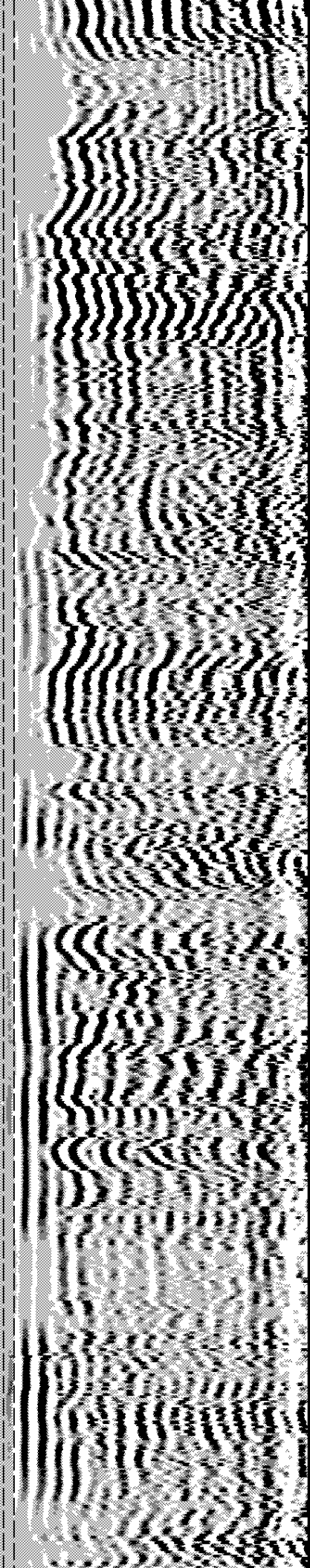
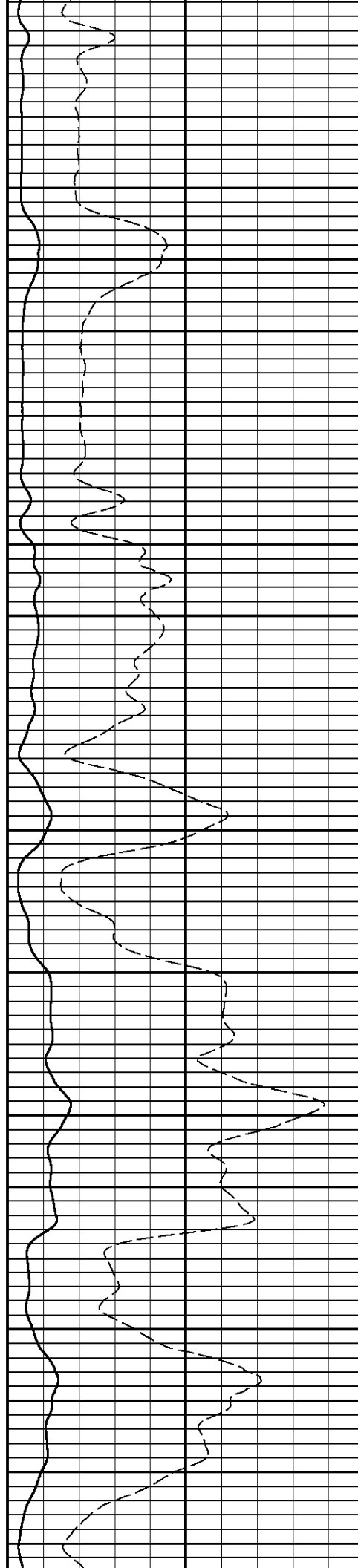


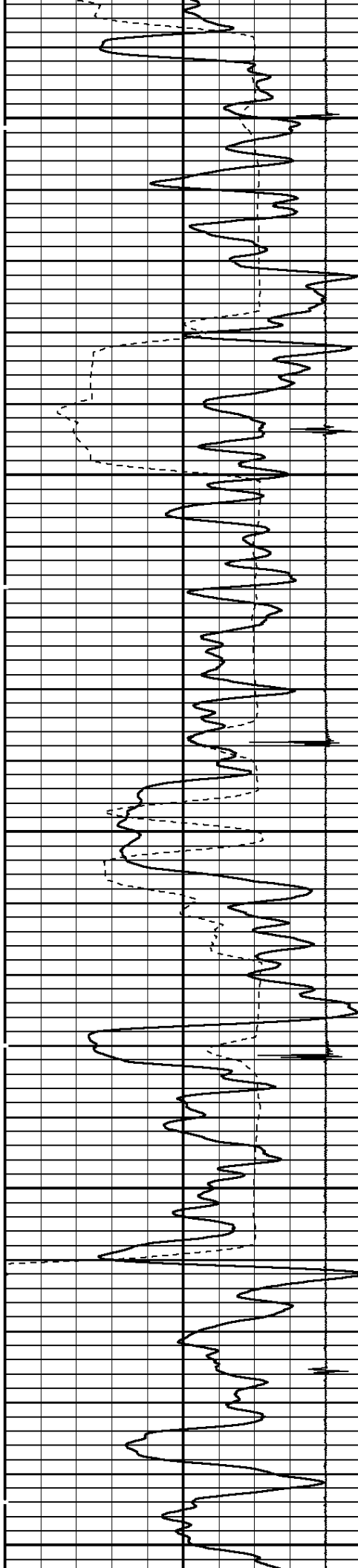


7500

7600

<<<MARKER JOINT>>>

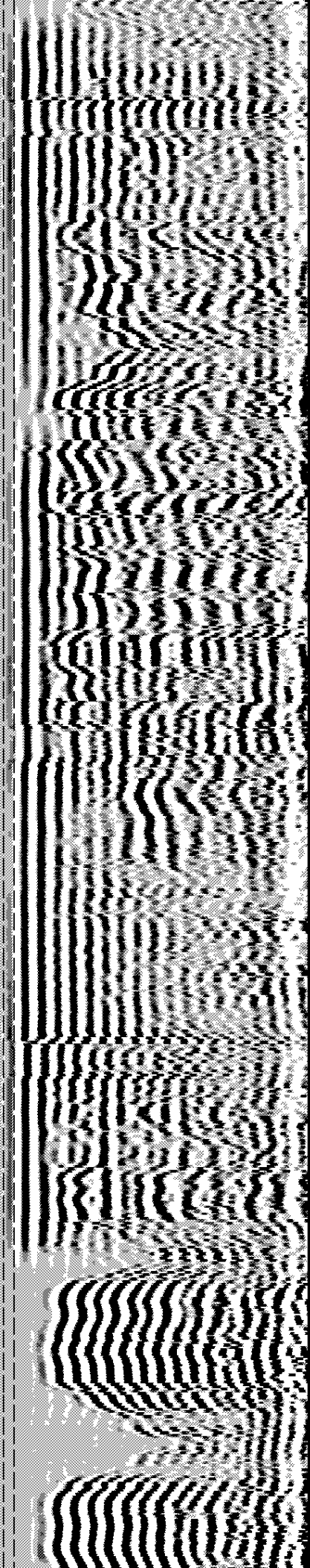
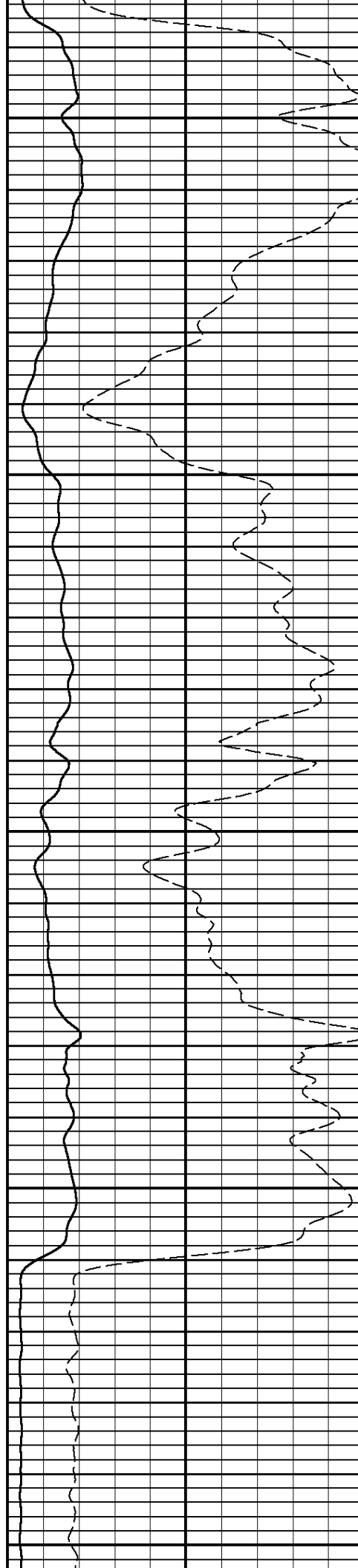


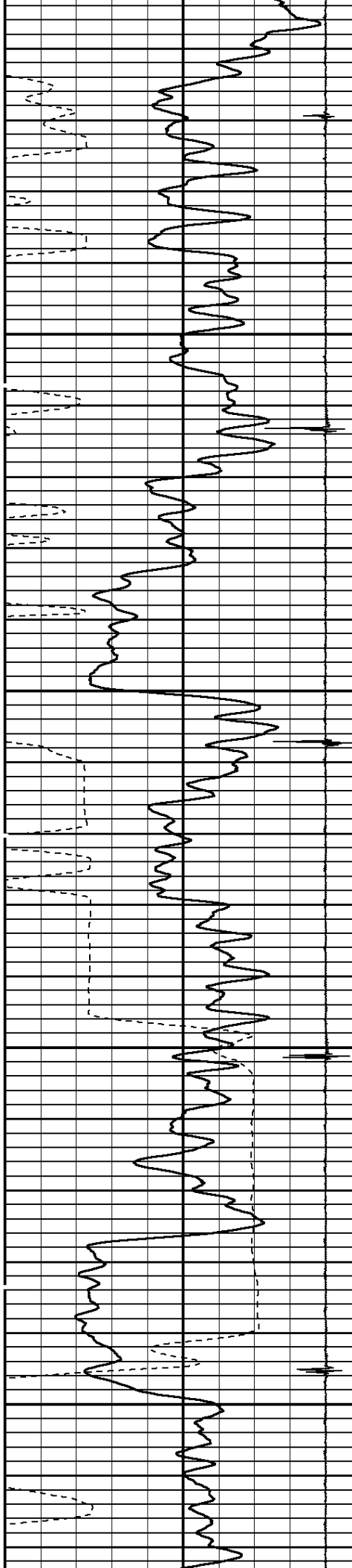


7700

7800

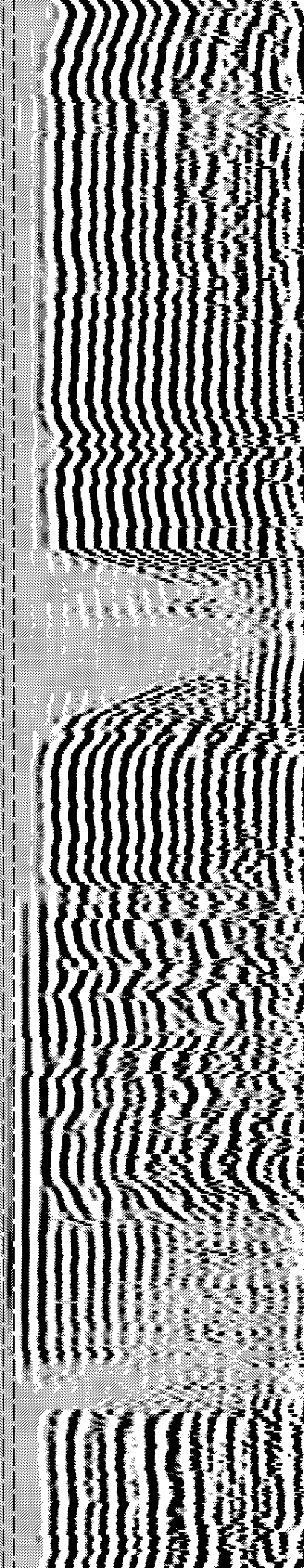
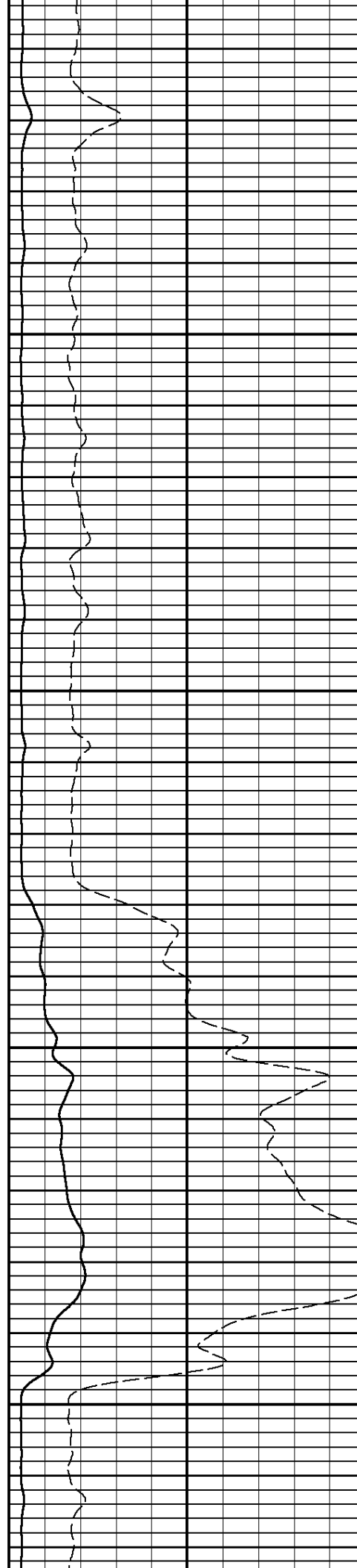
7900

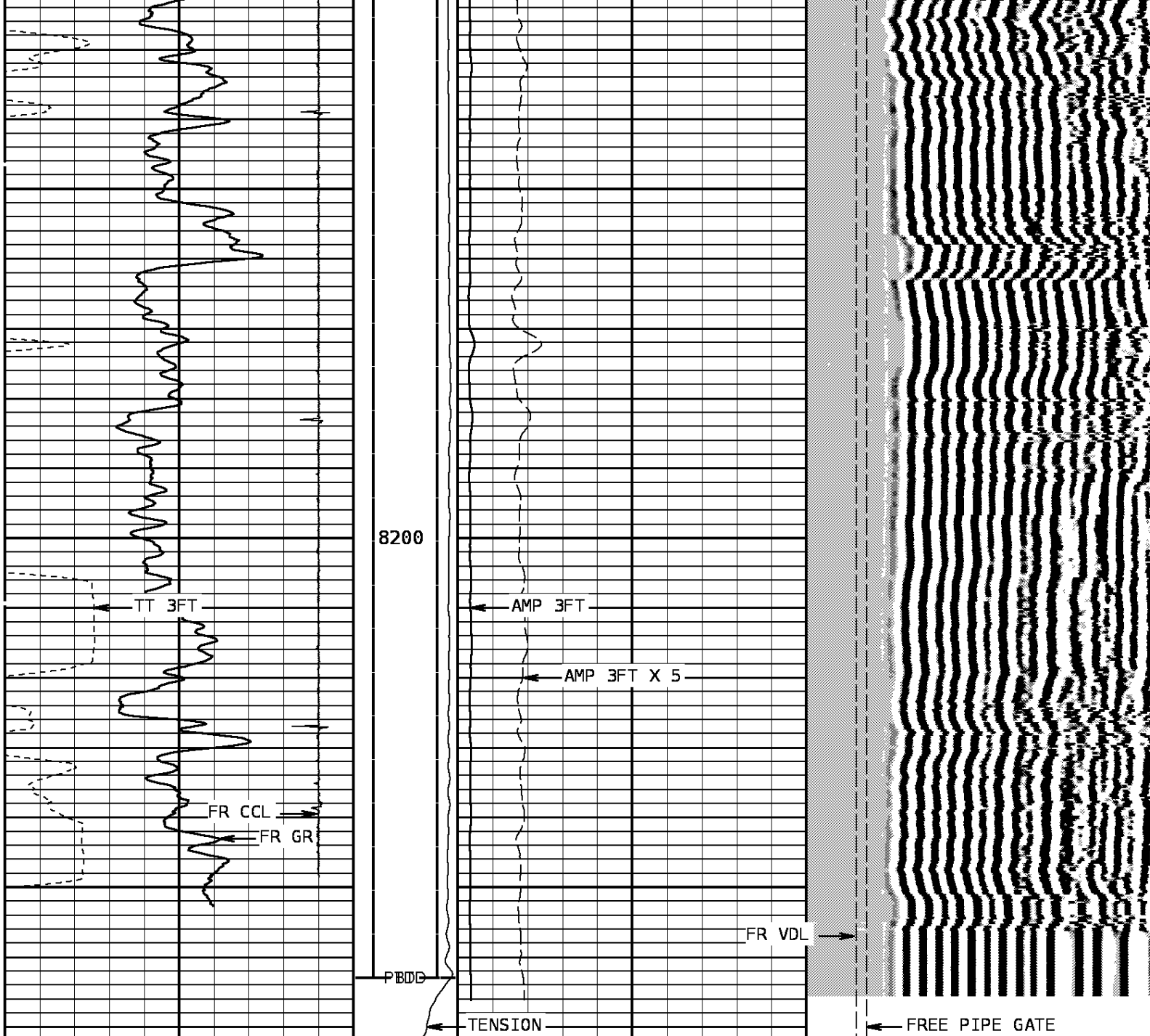




8000

8100





TRAVEL TIME 3FT			Tension		AMPLITUDE 3FT		VARIABLE DENSITY 5FT			
-----					-----		-----			
305	Microseconds	205	0	2200	0	Millivolts	100	200	Microseconds	1200
Gamma Ray					AMPLITUDE 3FT X5		FREE PIPE GATE			
-----					-----		-----			
0	API	150			0	Millivolts	20	200	Microseconds	1200
Collar Locator							FREE PIPE GATE			
-----							-----			
-1000	Millivolts	110					200	Microseconds	1200	

START DEPTH: 8272.2 DIRECTION: UP DATE: 12/23/2007 TIME: 22:18 MODE: ORIGINAL

142242 CBLMAINFNL

MAIN PASS

SYSTEM CONSTANTS

NAME	DESCRIPTION	VALUE	UNITS
CSIZ	Casing Size	4.500	Inches
CWEI	Casing Weight	11.60	Pounds/Foot
AMNS	Min Ampl 100% Bond	1	Millivolts
AMXS	Max Ampl 0% Bond	81	Millivolts
CCL0	Ccl Offset	0	
CCS	Cement Cmpr Strength	1200.0	PSI
CVEL	Casing Velocity	56.5	Microsec/Foot
DTF	DT Fluid	189.0	Microsec/Foot
MATT	Maximum Attenuation	12.00	Decibels/Foot
SWAN	Sheave Wheel Angle	0.00	Degrees
TTC	TT Correction	0	Microseconds
TTFE	Fast Formation TT	43.5	Microsec/Foot

REMARKS

LOGGED WITH 0 PSI @ SURFACE

DEPTH SCALE: 5":100'

VERSION: 70605113R"

REPEAT PASS

142242 CBLRPTFNL

FINISH DEPTH: 7946.8 Feet DIRECTION: UP DATE: 12/23/2007 TIME: 22:18 MODE: ORIGINAL

Collar Locator

-1000 Millivolts 110

Gamma Ray

0 API 150

FREE PIPE GATE

200 Microseconds 1200

AMPLITUDE 3FT X5

0 Millivolts 20

FREE PIPE GATE

200 Microseconds 1200

TRAVEL TIME 3FT

305 Microseconds 205

Tension

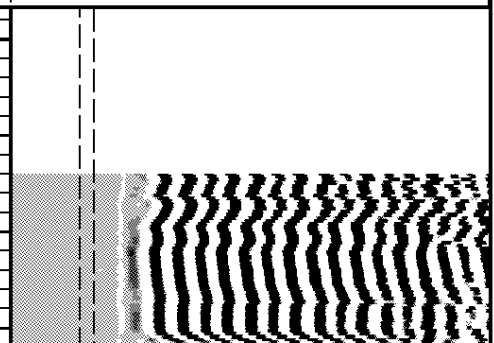
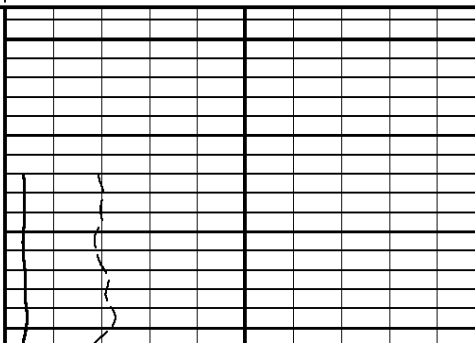
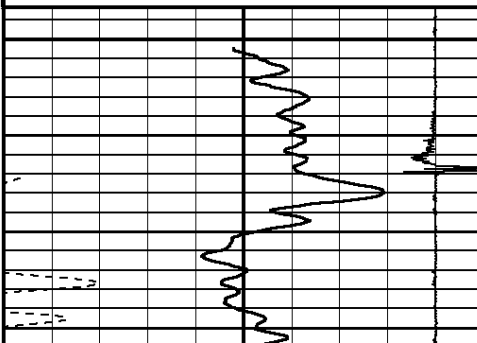
0 2200

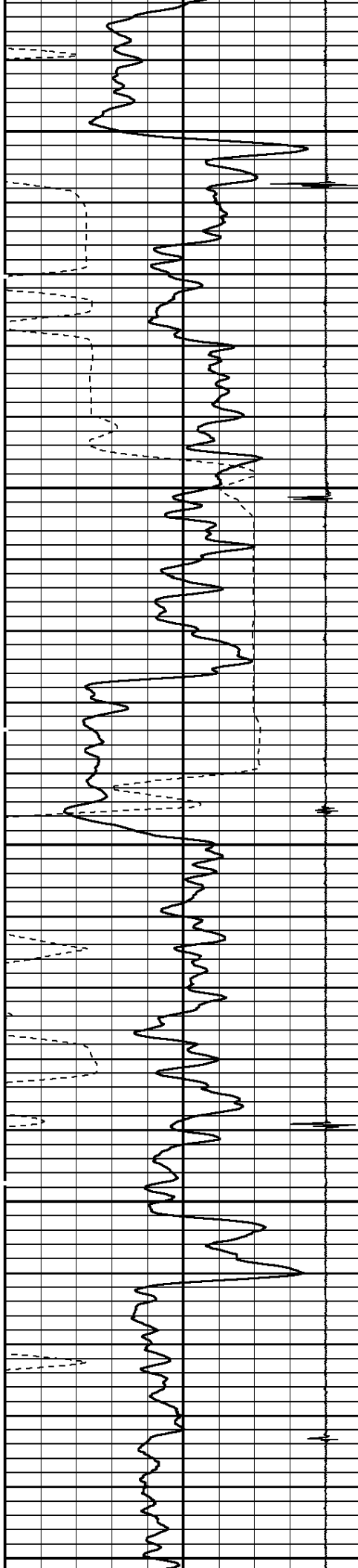
AMPLITUDE 3FT

0 Millivolts 100

VARIABLE DENSITY 5FT

200 Microseconds 1200

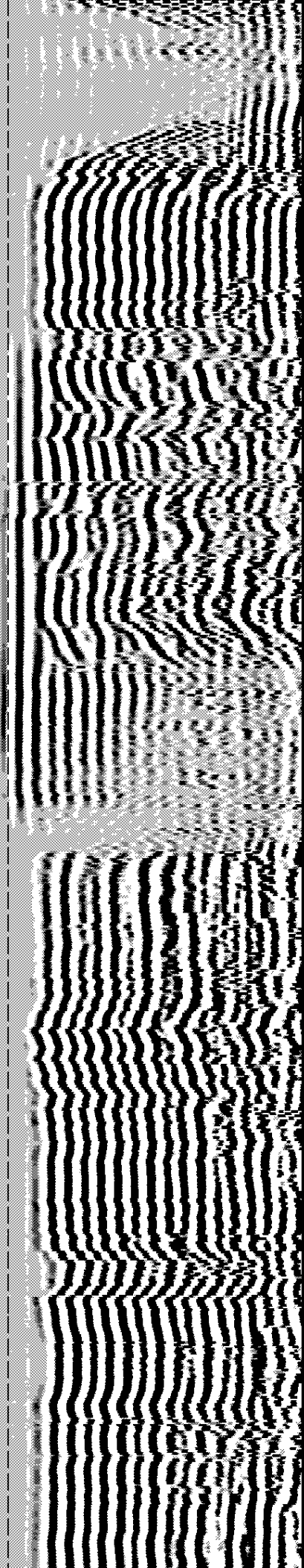
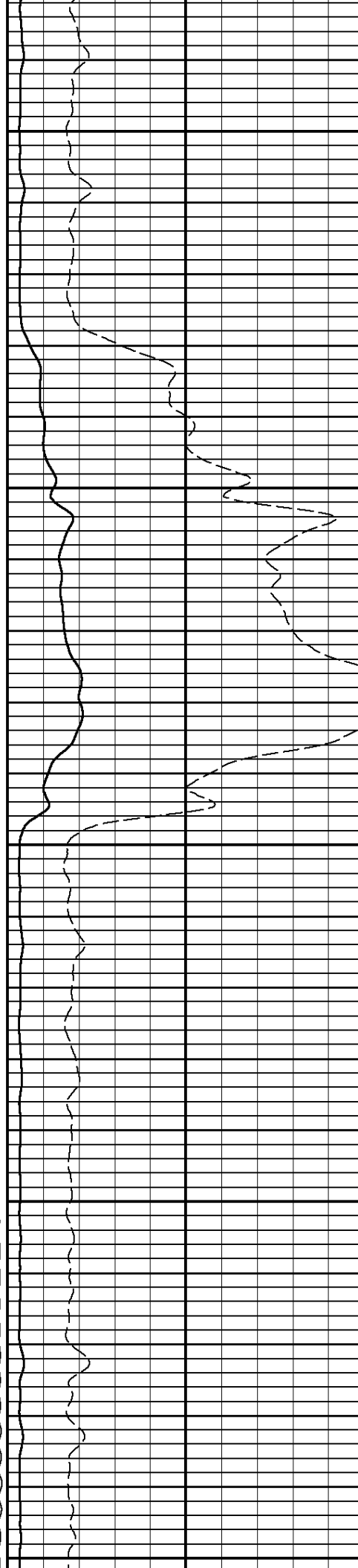


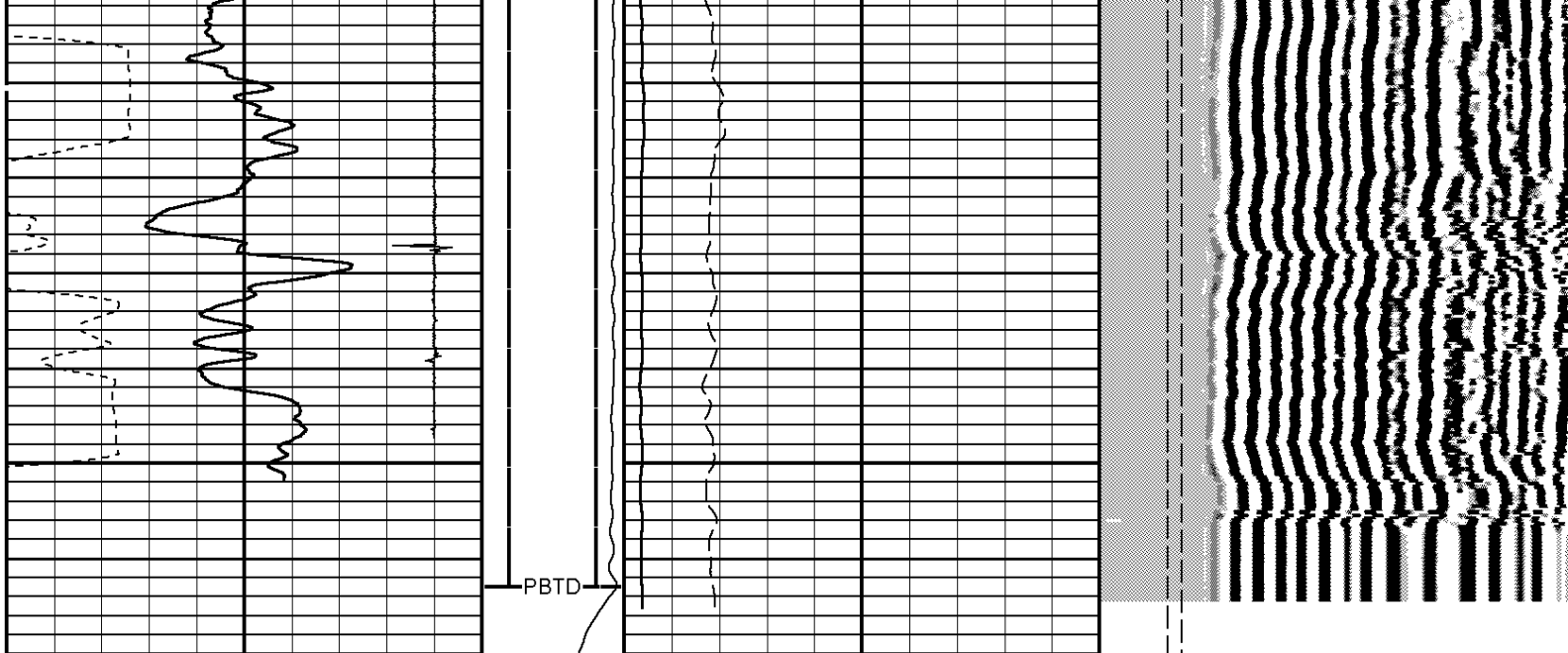


8000

8100

8200





TRAVEL TIME 3FT	Tension	AMPLITUDE 3FT	VARIABLE DENSITY 5FT
305 Microseconds 205	0 2200	0 Millivolts 100	200 Microseconds 1200
Gamma Ray		AMPLITUDE 3FT X5	FREE PIPE GATE
0 API 150		0 Millivolts 20	200 Microseconds 1200
Collar Locator			FREE PIPE GATE
-1000 Millivolts 110			200 Microseconds 1200

START DEPTH: 8270.9 DIRECTION: UP DATE: 12/23/2007 TIME: 22:18 MODE: ORIGINAL

142242 CBLRPTFNL

REPEAT PASS

DEPTH SCALE: 5":100'

VERSION: 70605113R"

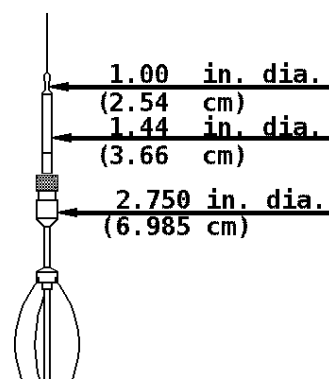
1 to 17 Adaptor Head

Weight 2.2 LB.
Length 12 IN.
Max. Diameter 1.44 IN.

Total Stack Weight 223.0 LBS. in air
Total Stack Length 27.83 FT.

Slim Hole Centralizer

Weight 15 lbs
Length 2.49 FT.



Max. Diameter 2.750 IN.

Collar Locator

Weight 39.8 LBS.
Length 3.40 FT.
Max. Diameter 2.75 IN.

CCL 23.57 FT.

2.750 in. dia.
(6.985 cm)

Slim Hole Gamma Ray

Weight 39.8 LBS.
Length 4.71 FT.
Max. Diameter 2.750 IN.

GR 19.97 FT.

2.750 in. dia.
(6.985 cm)

Slim Hole Centralizer

Weight 22 LBS.
Length 3.08 FT.
Max. Diameter 2.750 IN.

2.750 in. dia.
(6.985 cm)

Sector Bond

Weight 89.2 LBS.
Length 10.32 FT.
Max. Diameter 2.750 IN.

SBT/CBL Tx 8.75 FT.

2.750 in. dia.
(6.985 cm)

SBT Rx 7.77 FT.

3' Rx 7.28 FT.

5' Rx 6.28 FT.

2.750 in. dia.
(6.985 cm)

Slim Hole Centralizer

Weight 15.0 LBS.
Length 2.82 FT.
Max. Diameter 2.750 IN.

(6.985 cm)



Tool Zero

COMPANY DELTA PETROLEUM CORPORATION

WELL DELTA 27-421

FIELD NORTH VEGA

COUNTY MESA

STATE COLORADO



Weatherford®