



Weld County, Colorado  
Section 33-T01N-R65W  
Walla 5-3-1L  
plan1

Azimuth Corrections:

To convert a Magnetic Direction to a True Direction, Add 8.28° East

Walla 5-3-1L			
Surf loc: 760 FSL 300 FWL Sec33-T01N-R65W			
NAD83 Colorado - HARN			
Universal Transverse Mercator (US Survey Feet)			
Zone 13N (108 W to 102 W)			
RKB=5074+25 @ 5099.00ft			
Northing	Easting	Latitude	Longitude
14527851.11	1730773.41	40.00262011	-104.67734402

Section Details

Sec	MD	Inc	Azi	TVD	+N/-S	+E/-W	Dleg	Vsect	Annotation
1	0.00	0.00	0.00	0.00	0.00	0.00	0.00	0.00	
2	5000.00	0.00	0.00	5000.00	0.00	0.00	0.00	0.00	KOP Begin 10°/100' build
3	5470.74	47.07	246.08	5419.54	-74.11	-167.04	10.00	101.78	Begin 47.07° tangent
4	7524.38	47.07	246.08	6818.19	-683.93	-1541.57	0.00	939.33	Begin 10°/100' build/turn
5	8250.96	90.02	180.12	7105.00	-1230.37	-1824.42	10.00	1526.33	LP Begin 90.02° lateral section
6	17557.71	90.02	180.12	7102.00	-10537.10	-1843.20	0.00	10697.09	PBHL/TD 17557.71 MD/7102.00 TVD

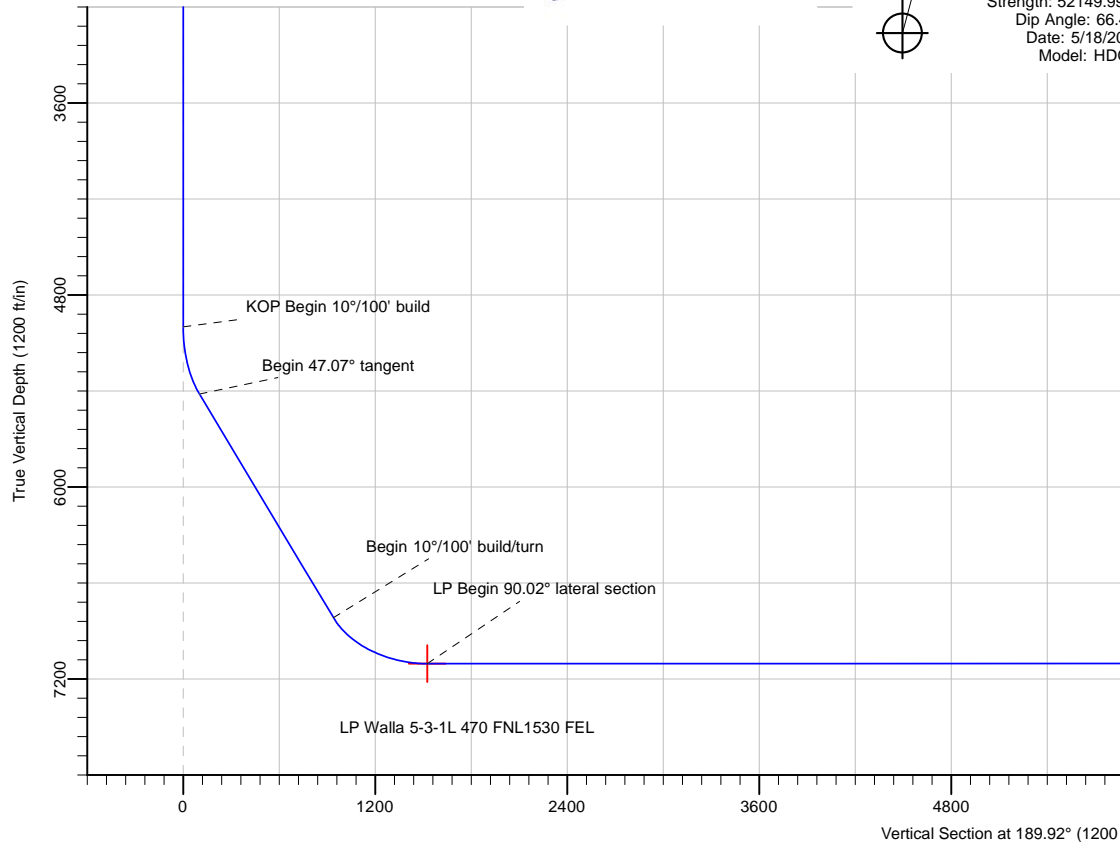
DESIGN TARGET DETAILS

Name	TVD	+N/-S	+E/-W	Northing	Easting	Latitude	Longitude
BHL Walla 5-3-1L 470 FSL1530 FEL	7102.00	-10537.10	-1843.20	14517307.43	1728968.37	39.97368327	-104.68392304
LP Walla 5-3-1L 470 FNL1530 FEL	7105.00	-1230.37	-1824.42	14526614.15	1728953.46	39.99924114	-104.68385847

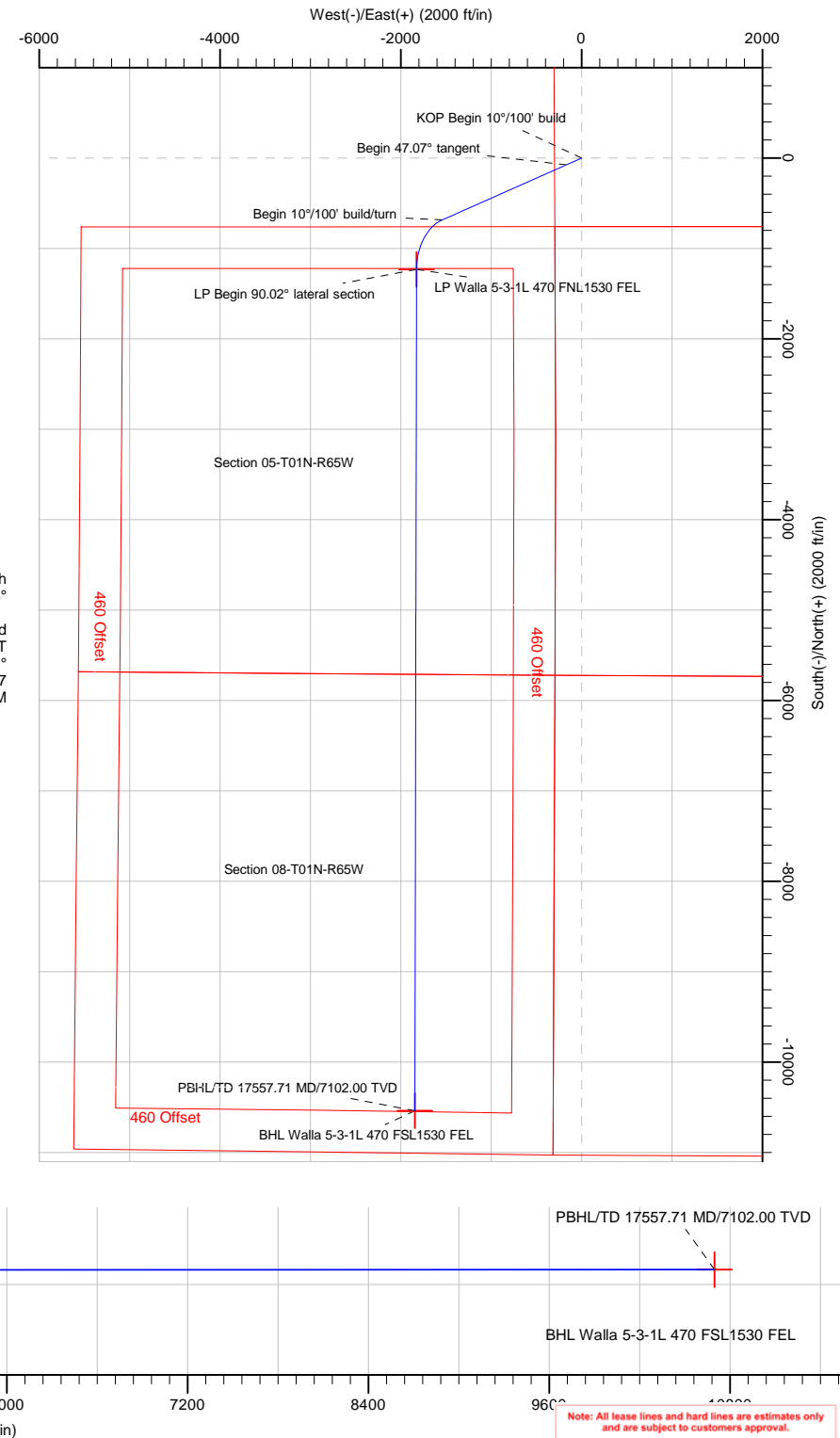


Azimuths to True North  
Magnetic North: 8.28°

Magnetic Field  
Strength: 52149.9snT  
Dip Angle: 66.45°  
Date: 5/18/2017  
Model: HDGM



Date: 20:47, May 18 2017



Note: All lease lines and hard lines are estimates only and are subject to customers approval.

<b>Database:</b>	DB_Jul2216dt_v14	<b>Local Co-ordinate Reference:</b>	Well Walla 5-3-1L
<b>Company:</b>	Confluence Resources	<b>TVD Reference:</b>	RKB=5074+25 @ 5099.00ft
<b>Project:</b>	Weld County, Colorado	<b>MD Reference:</b>	RKB=5074+25 @ 5099.00ft
<b>Site:</b>	Section 33-T01N-R65W	<b>North Reference:</b>	True
<b>Well:</b>	Walla 5-3-1L	<b>Survey Calculation Method:</b>	Minimum Curvature
<b>Wellbore:</b>	Original Hole		
<b>Design:</b>	plan1		

<b>Project</b>	Weld County, Colorado		
<b>Map System:</b>	Universal Transverse Mercator (US Survey Feet)	<b>System Datum:</b>	Mean Sea Level
<b>Geo Datum:</b>	NAD83 Colorado - HARN		
<b>Map Zone:</b>	Zone 13N (108 W to 102 W)		

Site		Section 33-T01N-R65W			
Site Position:		Northing:	14,527,751.12 usft	Latitude:	40.00234552
From:	Map	Easting:	1,730,774.27 usft	Longitude:	-104.67734224
Position Uncertainty:	0.00 ft	Slot Radius:	13-3/16 "	Grid Convergence:	0.21 °

Well	Walla 5-3-1L, Surf loc: 760 FSL 300 FWL Sec33-T01N-R65W					
Well Position	+N/-S	99.99 ft	Northing:	14,527,851.11 usft	Latitude:	40.00262011
	+E/-W	-0.50 ft	Easting:	1,730,773.41 usft	Longitude:	-104.67734402
Position Uncertainty		0.00 ft	Wellhead Elevation:		Ground Level:	5,074.00 ft

<b>Wellbore</b>	Original Hole				
<b>Magnetics</b>	<b>Model Name</b>	<b>Sample Date</b>	<b>Declination (°)</b>	<b>Dip Angle (°)</b>	<b>Field Strength (nT)</b>
	HDGM	5/18/2017	8.28	66.45	52,149.90000000

<b>Design</b>	plan1			
<b>Audit Notes:</b>				
<b>Version:</b>	<b>Phase:</b>	PLAN	<b>Tie On Depth:</b>	0.00
<b>Vertical Section:</b>	<b>Depth From (TVD) (ft)</b>	<b>+N/-S (ft)</b>	<b>+E/-W (ft)</b>	<b>Direction (°)</b>
	0.00	0.00	0.00	189.92

<b>Plan Survey Tool Program</b>	<b>Date</b>	5/18/2017		
<b>Depth From (ft)</b>	<b>Depth To (ft)</b>	<b>Survey (Wellbore)</b>	<b>Tool Name</b>	<b>Remarks</b>
1	0.00	17,557.71	plan1 (Original Hole)	

<b>Plan Sections</b>										
<b>Measured Depth (ft)</b>	<b>Inclination (°)</b>	<b>Azimuth (°)</b>	<b>Vertical Depth (ft)</b>	<b>+N/-S (ft)</b>	<b>+E/-W (ft)</b>	<b>Dogleg Rate (°/100ft)</b>	<b>Build Rate (°/100ft)</b>	<b>Turn Rate (°/100ft)</b>	<b>TFO (°)</b>	<b>Target</b>
0.00	0.00	0.00	0.00	0.00	0.00	0.00	0.00	0.00	0.00	
5,000.00	0.00	0.00	5,000.00	0.00	0.00	0.00	0.00	0.00	0.00	
5,470.74	47.07	246.08	5,419.54	-74.11	-167.04	10.00	10.00	0.00	246.08	
7,524.38	47.07	246.08	6,818.19	-683.93	-1,541.57	0.00	0.00	0.00	0.00	
8,250.96	90.02	180.12	7,105.00	-1,230.37	-1,824.42	10.00	5.91	-9.08	-73.09	LP Walla 5-3-1L 470 F
17,557.71	90.02	180.12	7,102.00	-10,537.10	-1,843.20	0.00	0.00	0.00	0.00	BHL Walla 5-3-1L 470

<b>Database:</b>	DB_Jul2216dt_v14	<b>Local Co-ordinate Reference:</b>	Well Walla 5-3-1L
<b>Company:</b>	Confluence Resources	<b>TVD Reference:</b>	RKB=5074+25 @ 5099.00ft
<b>Project:</b>	Weld County, Colorado	<b>MD Reference:</b>	RKB=5074+25 @ 5099.00ft
<b>Site:</b>	Section 33-T01N-R65W	<b>North Reference:</b>	True
<b>Well:</b>	Walla 5-3-1L	<b>Survey Calculation Method:</b>	Minimum Curvature
<b>Wellbore:</b>	Original Hole		
<b>Design:</b>	plan1		

Planned Survey									
Measured Depth (ft)	Inclination (°)	Azimuth (°)	Vertical Depth (ft)	+N/-S (ft)	+E/-W (ft)	Vertical Section (ft)	Dogleg Rate (°/100ft)	Build Rate (°/100ft)	Turn Rate (°/100ft)
0.00	0.00	0.00	0.00	0.00	0.00	0.00	0.00	0.00	0.00
100.00	0.00	0.00	100.00	0.00	0.00	0.00	0.00	0.00	0.00
200.00	0.00	0.00	200.00	0.00	0.00	0.00	0.00	0.00	0.00
300.00	0.00	0.00	300.00	0.00	0.00	0.00	0.00	0.00	0.00
400.00	0.00	0.00	400.00	0.00	0.00	0.00	0.00	0.00	0.00
500.00	0.00	0.00	500.00	0.00	0.00	0.00	0.00	0.00	0.00
600.00	0.00	0.00	600.00	0.00	0.00	0.00	0.00	0.00	0.00
700.00	0.00	0.00	700.00	0.00	0.00	0.00	0.00	0.00	0.00
800.00	0.00	0.00	800.00	0.00	0.00	0.00	0.00	0.00	0.00
900.00	0.00	0.00	900.00	0.00	0.00	0.00	0.00	0.00	0.00
1,000.00	0.00	0.00	1,000.00	0.00	0.00	0.00	0.00	0.00	0.00
1,100.00	0.00	0.00	1,100.00	0.00	0.00	0.00	0.00	0.00	0.00
1,200.00	0.00	0.00	1,200.00	0.00	0.00	0.00	0.00	0.00	0.00
1,300.00	0.00	0.00	1,300.00	0.00	0.00	0.00	0.00	0.00	0.00
1,400.00	0.00	0.00	1,400.00	0.00	0.00	0.00	0.00	0.00	0.00
1,500.00	0.00	0.00	1,500.00	0.00	0.00	0.00	0.00	0.00	0.00
1,600.00	0.00	0.00	1,600.00	0.00	0.00	0.00	0.00	0.00	0.00
1,700.00	0.00	0.00	1,700.00	0.00	0.00	0.00	0.00	0.00	0.00
1,800.00	0.00	0.00	1,800.00	0.00	0.00	0.00	0.00	0.00	0.00
1,900.00	0.00	0.00	1,900.00	0.00	0.00	0.00	0.00	0.00	0.00
2,000.00	0.00	0.00	2,000.00	0.00	0.00	0.00	0.00	0.00	0.00
2,100.00	0.00	0.00	2,100.00	0.00	0.00	0.00	0.00	0.00	0.00
2,200.00	0.00	0.00	2,200.00	0.00	0.00	0.00	0.00	0.00	0.00
2,300.00	0.00	0.00	2,300.00	0.00	0.00	0.00	0.00	0.00	0.00
2,400.00	0.00	0.00	2,400.00	0.00	0.00	0.00	0.00	0.00	0.00
2,500.01	0.00	0.00	2,500.01	0.00	0.00	0.00	0.00	0.00	0.00
2,600.01	0.00	0.00	2,600.01	0.00	0.00	0.00	0.00	0.00	0.00
2,700.01	0.00	0.00	2,700.01	0.00	0.00	0.00	0.00	0.00	0.00
2,800.01	0.00	0.00	2,800.01	0.00	0.00	0.00	0.00	0.00	0.00
2,900.01	0.00	0.00	2,900.01	0.00	0.00	0.00	0.00	0.00	0.00
3,000.01	0.00	0.00	3,000.01	0.00	0.00	0.00	0.00	0.00	0.00
3,100.01	0.00	0.00	3,100.01	0.00	0.00	0.00	0.00	0.00	0.00
3,200.01	0.00	0.00	3,200.01	0.00	0.00	0.00	0.00	0.00	0.00
3,300.01	0.00	0.00	3,300.01	0.00	0.00	0.00	0.00	0.00	0.00
3,400.01	0.00	0.00	3,400.01	0.00	0.00	0.00	0.00	0.00	0.00
3,500.01	0.00	0.00	3,500.01	0.00	0.00	0.00	0.00	0.00	0.00
3,600.01	0.00	0.00	3,600.01	0.00	0.00	0.00	0.00	0.00	0.00
3,700.01	0.00	0.00	3,700.01	0.00	0.00	0.00	0.00	0.00	0.00
3,800.01	0.00	0.00	3,800.01	0.00	0.00	0.00	0.00	0.00	0.00
3,900.01	0.00	0.00	3,900.01	0.00	0.00	0.00	0.00	0.00	0.00
4,000.01	0.00	0.00	4,000.01	0.00	0.00	0.00	0.00	0.00	0.00
4,100.01	0.00	0.00	4,100.01	0.00	0.00	0.00	0.00	0.00	0.00
4,200.01	0.00	0.00	4,200.01	0.00	0.00	0.00	0.00	0.00	0.00
4,300.01	0.00	0.00	4,300.01	0.00	0.00	0.00	0.00	0.00	0.00
4,400.01	0.00	0.00	4,400.01	0.00	0.00	0.00	0.00	0.00	0.00
4,500.01	0.00	0.00	4,500.01	0.00	0.00	0.00	0.00	0.00	0.00
4,600.01	0.00	0.00	4,600.01	0.00	0.00	0.00	0.00	0.00	0.00
4,700.01	0.00	0.00	4,700.01	0.00	0.00	0.00	0.00	0.00	0.00
4,800.01	0.00	0.00	4,800.01	0.00	0.00	0.00	0.00	0.00	0.00
4,900.01	0.00	0.00	4,900.01	0.00	0.00	0.00	0.00	0.00	0.00
5,000.00	0.00	0.00	5,000.00	0.00	0.00	0.00	0.00	0.00	0.00
KOP Begin 10°/100' build									
5,000.01	0.00	246.08	5,000.01	0.00	0.00	0.00	0.00	0.00	0.00
5,100.01	10.00	246.08	5,099.50	-3.53	-7.96	4.85	10.00	10.00	0.00

<b>Database:</b>	DB_Jul2216dt_v14	<b>Local Co-ordinate Reference:</b>	Well Walla 5-3-1L
<b>Company:</b>	Confluence Resources	<b>TVD Reference:</b>	RKB=5074+25 @ 5099.00ft
<b>Project:</b>	Weld County, Colorado	<b>MD Reference:</b>	RKB=5074+25 @ 5099.00ft
<b>Site:</b>	Section 33-T01N-R65W	<b>North Reference:</b>	True
<b>Well:</b>	Walla 5-3-1L	<b>Survey Calculation Method:</b>	Minimum Curvature
<b>Wellbore:</b>	Original Hole		
<b>Design:</b>	plan1		

Planned Survey									
Measured Depth (ft)	Inclination (°)	Azimuth (°)	Vertical Depth (ft)	+N/-S (ft)	+E/-W (ft)	Vertical Section (ft)	Dogleg Rate (°/100ft)	Build Rate (°/100ft)	Turn Rate (°/100ft)
5,200.01	20.00	246.08	5,195.97	-14.01	-31.59	19.25	10.00	10.00	0.00
5,300.01	30.00	246.08	5,286.49	-31.13	-70.17	42.76	10.00	10.00	0.00
5,400.01	40.00	246.08	5,368.30	-54.36	-122.54	74.66	10.00	10.00	0.00
5,470.74	47.07	246.08	5,419.54	-74.11	-167.04	101.78	10.00	10.00	0.00
Begin 47.07° tangent									
5,500.01	47.07	246.08	5,439.47	-82.80	-186.63	113.72	0.00	0.00	0.00
5,600.01	47.07	246.08	5,507.58	-112.50	-253.56	154.50	0.00	0.00	0.00
5,700.01	47.07	246.08	5,575.69	-142.19	-320.50	195.29	0.00	0.00	0.00
5,800.01	47.07	246.08	5,643.79	-171.89	-387.43	236.07	0.00	0.00	0.00
5,900.01	47.07	246.08	5,711.90	-201.58	-454.36	276.86	0.00	0.00	0.00
6,000.01	47.07	246.08	5,780.00	-231.28	-521.29	317.64	0.00	0.00	0.00
6,100.01	47.07	246.08	5,848.11	-260.97	-588.22	358.42	0.00	0.00	0.00
6,200.01	47.07	246.08	5,916.22	-290.66	-655.15	399.21	0.00	0.00	0.00
6,300.01	47.07	246.08	5,984.32	-320.36	-722.08	439.99	0.00	0.00	0.00
6,400.01	47.07	246.08	6,052.43	-350.05	-789.02	480.77	0.00	0.00	0.00
6,500.01	47.07	246.08	6,120.53	-379.75	-855.95	521.56	0.00	0.00	0.00
6,600.01	47.07	246.08	6,188.64	-409.44	-922.88	562.34	0.00	0.00	0.00
6,700.01	47.07	246.08	6,256.75	-439.14	-989.81	603.12	0.00	0.00	0.00
6,800.01	47.07	246.08	6,324.85	-468.83	-1,056.74	643.91	0.00	0.00	0.00
6,900.01	47.07	246.08	6,392.96	-498.53	-1,123.67	684.69	0.00	0.00	0.00
7,000.01	47.07	246.08	6,461.07	-528.22	-1,190.61	725.47	0.00	0.00	0.00
7,100.01	47.07	246.08	6,529.17	-557.92	-1,257.54	766.26	0.00	0.00	0.00
7,200.01	47.07	246.08	6,597.28	-587.61	-1,324.47	807.04	0.00	0.00	0.00
7,300.01	47.07	246.08	6,665.38	-617.31	-1,391.40	847.82	0.00	0.00	0.00
7,400.01	47.07	246.08	6,733.49	-647.00	-1,458.33	888.61	0.00	0.00	0.00
7,500.02	47.07	246.08	6,801.60	-676.70	-1,525.26	929.39	0.00	0.00	0.00
7,524.38	47.07	246.08	6,818.19	-683.93	-1,541.57	939.33	0.00	0.00	0.00
Begin 10°/100' build/turn									
7,600.02	49.68	236.57	6,868.49	-711.09	-1,591.02	974.60	10.00	3.44	-12.57
7,700.02	54.19	225.22	6,930.25	-760.78	-1,651.77	1,034.01	10.00	4.52	-11.35
7,800.02	59.66	215.21	6,984.90	-824.76	-1,705.57	1,106.31	10.00	5.46	-10.01
7,900.02	65.79	206.32	7,030.78	-901.08	-1,750.79	1,189.28	10.00	6.14	-8.89
8,000.02	72.40	198.28	7,066.49	-987.43	-1,786.04	1,280.42	10.00	6.61	-8.04
8,100.02	79.31	190.82	7,090.94	-1,081.19	-1,810.27	1,376.94	10.00	6.91	-7.46
8,200.02	86.38	183.69	7,103.40	-1,179.49	-1,822.73	1,475.93	10.00	7.08	-7.13
8,250.96	90.02	180.12	7,105.00	-1,230.37	-1,824.42	1,526.33	10.00	7.13	-7.02
LP Begin 90.02° lateral section									
8,300.02	90.02	180.12	7,104.98	-1,279.42	-1,824.52	1,574.67	0.00	0.00	0.00
8,400.02	90.02	180.12	7,104.95	-1,379.42	-1,824.72	1,673.21	0.00	0.00	0.00
8,500.02	90.02	180.12	7,104.92	-1,479.42	-1,824.92	1,771.75	0.00	0.00	0.00
8,600.02	90.02	180.12	7,104.89	-1,579.42	-1,825.12	1,870.29	0.00	0.00	0.00
8,700.02	90.02	180.12	7,104.86	-1,679.42	-1,825.33	1,968.82	0.00	0.00	0.00
8,800.02	90.02	180.12	7,104.82	-1,779.42	-1,825.53	2,067.36	0.00	0.00	0.00
8,900.02	90.02	180.12	7,104.79	-1,879.42	-1,825.73	2,165.90	0.00	0.00	0.00
9,000.02	90.02	180.12	7,104.76	-1,979.42	-1,825.93	2,264.44	0.00	0.00	0.00
9,100.02	90.02	180.12	7,104.73	-2,079.42	-1,826.13	2,362.98	0.00	0.00	0.00
9,200.02	90.02	180.12	7,104.69	-2,179.42	-1,826.34	2,461.52	0.00	0.00	0.00
9,300.02	90.02	180.12	7,104.66	-2,279.42	-1,826.54	2,560.06	0.00	0.00	0.00
9,400.02	90.02	180.12	7,104.63	-2,379.42	-1,826.74	2,658.60	0.00	0.00	0.00
9,500.02	90.02	180.12	7,104.60	-2,479.42	-1,826.94	2,757.14	0.00	0.00	0.00
9,600.02	90.02	180.12	7,104.57	-2,579.42	-1,827.14	2,855.68	0.00	0.00	0.00
9,700.02	90.02	180.12	7,104.53	-2,679.42	-1,827.34	2,954.22	0.00	0.00	0.00
9,800.02	90.02	180.12	7,104.50	-2,779.42	-1,827.55	3,052.75	0.00	0.00	0.00

<b>Database:</b>	DB_Jul2216dt_v14	<b>Local Co-ordinate Reference:</b>	Well Walla 5-3-1L
<b>Company:</b>	Confluence Resources	<b>TVD Reference:</b>	RKB=5074+25 @ 5099.00ft
<b>Project:</b>	Weld County, Colorado	<b>MD Reference:</b>	RKB=5074+25 @ 5099.00ft
<b>Site:</b>	Section 33-T01N-R65W	<b>North Reference:</b>	True
<b>Well:</b>	Walla 5-3-1L	<b>Survey Calculation Method:</b>	Minimum Curvature
<b>Wellbore:</b>	Original Hole		
<b>Design:</b>	plan1		

Planned Survey									
Measured Depth (ft)	Inclination (°)	Azimuth (°)	Vertical Depth (ft)	+N/-S (ft)	+E/-W (ft)	Vertical Section (ft)	Dogleg Rate (°/100ft)	Build Rate (°/100ft)	Turn Rate (°/100ft)
9,900.02	90.02	180.12	7,104.47	-2,879.42	-1,827.75	3,151.29	0.00	0.00	0.00
10,000.02	90.02	180.12	7,104.44	-2,979.42	-1,827.95	3,249.83	0.00	0.00	0.00
10,100.02	90.02	180.12	7,104.40	-3,079.42	-1,828.15	3,348.37	0.00	0.00	0.00
10,200.02	90.02	180.12	7,104.37	-3,179.42	-1,828.35	3,446.91	0.00	0.00	0.00
10,300.02	90.02	180.12	7,104.34	-3,279.42	-1,828.56	3,545.45	0.00	0.00	0.00
10,400.02	90.02	180.12	7,104.31	-3,379.42	-1,828.76	3,643.99	0.00	0.00	0.00
10,500.02	90.02	180.12	7,104.28	-3,479.42	-1,828.96	3,742.53	0.00	0.00	0.00
10,600.02	90.02	180.12	7,104.24	-3,579.42	-1,829.16	3,841.07	0.00	0.00	0.00
10,700.02	90.02	180.12	7,104.21	-3,679.42	-1,829.36	3,939.61	0.00	0.00	0.00
10,800.02	90.02	180.12	7,104.18	-3,779.42	-1,829.56	4,038.15	0.00	0.00	0.00
10,900.02	90.02	180.12	7,104.15	-3,879.42	-1,829.77	4,136.68	0.00	0.00	0.00
11,000.02	90.02	180.12	7,104.11	-3,979.42	-1,829.97	4,235.22	0.00	0.00	0.00
11,100.02	90.02	180.12	7,104.08	-4,079.42	-1,830.17	4,333.76	0.00	0.00	0.00
11,200.02	90.02	180.12	7,104.05	-4,179.42	-1,830.37	4,432.30	0.00	0.00	0.00
11,300.02	90.02	180.12	7,104.02	-4,279.42	-1,830.57	4,530.84	0.00	0.00	0.00
11,400.02	90.02	180.12	7,103.99	-4,379.42	-1,830.78	4,629.38	0.00	0.00	0.00
11,500.02	90.02	180.12	7,103.95	-4,479.42	-1,830.98	4,727.92	0.00	0.00	0.00
11,600.02	90.02	180.12	7,103.92	-4,579.42	-1,831.18	4,826.46	0.00	0.00	0.00
11,700.02	90.02	180.12	7,103.89	-4,679.42	-1,831.38	4,925.00	0.00	0.00	0.00
11,800.02	90.02	180.12	7,103.86	-4,779.42	-1,831.58	5,023.54	0.00	0.00	0.00
11,900.02	90.02	180.12	7,103.82	-4,879.42	-1,831.78	5,122.08	0.00	0.00	0.00
12,000.02	90.02	180.12	7,103.79	-4,979.42	-1,831.99	5,220.61	0.00	0.00	0.00
12,100.02	90.02	180.12	7,103.76	-5,079.42	-1,832.19	5,319.15	0.00	0.00	0.00
12,200.02	90.02	180.12	7,103.73	-5,179.42	-1,832.39	5,417.69	0.00	0.00	0.00
12,300.02	90.02	180.12	7,103.69	-5,279.42	-1,832.59	5,516.23	0.00	0.00	0.00
12,400.03	90.02	180.12	7,103.66	-5,379.42	-1,832.79	5,614.77	0.00	0.00	0.00
12,500.03	90.02	180.12	7,103.63	-5,479.42	-1,833.00	5,713.31	0.00	0.00	0.00
12,600.03	90.02	180.12	7,103.60	-5,579.42	-1,833.20	5,811.85	0.00	0.00	0.00
12,700.03	90.02	180.12	7,103.57	-5,679.42	-1,833.40	5,910.39	0.00	0.00	0.00
12,800.03	90.02	180.12	7,103.53	-5,779.42	-1,833.60	6,008.93	0.00	0.00	0.00
12,900.03	90.02	180.12	7,103.50	-5,879.42	-1,833.80	6,107.47	0.00	0.00	0.00
13,000.03	90.02	180.12	7,103.47	-5,979.42	-1,834.00	6,206.00	0.00	0.00	0.00
13,100.03	90.02	180.12	7,103.44	-6,079.42	-1,834.21	6,304.54	0.00	0.00	0.00
13,200.03	90.02	180.12	7,103.40	-6,179.42	-1,834.41	6,403.08	0.00	0.00	0.00
13,300.03	90.02	180.12	7,103.37	-6,279.42	-1,834.61	6,501.62	0.00	0.00	0.00
13,400.03	90.02	180.12	7,103.34	-6,379.42	-1,834.81	6,600.16	0.00	0.00	0.00
13,500.03	90.02	180.12	7,103.31	-6,479.42	-1,835.01	6,698.70	0.00	0.00	0.00
13,600.03	90.02	180.12	7,103.28	-6,579.42	-1,835.22	6,797.24	0.00	0.00	0.00
13,700.03	90.02	180.12	7,103.24	-6,679.42	-1,835.42	6,895.78	0.00	0.00	0.00
13,800.03	90.02	180.12	7,103.21	-6,779.42	-1,835.62	6,994.32	0.00	0.00	0.00
13,900.03	90.02	180.12	7,103.18	-6,879.42	-1,835.82	7,092.86	0.00	0.00	0.00
14,000.03	90.02	180.12	7,103.15	-6,979.42	-1,836.02	7,191.40	0.00	0.00	0.00
14,100.03	90.02	180.12	7,103.11	-7,079.42	-1,836.22	7,289.93	0.00	0.00	0.00
14,200.03	90.02	180.12	7,103.08	-7,179.42	-1,836.43	7,388.47	0.00	0.00	0.00
14,300.03	90.02	180.12	7,103.05	-7,279.42	-1,836.63	7,487.01	0.00	0.00	0.00
14,400.03	90.02	180.12	7,103.02	-7,379.42	-1,836.83	7,585.55	0.00	0.00	0.00
14,500.03	90.02	180.12	7,102.99	-7,479.42	-1,837.03	7,684.09	0.00	0.00	0.00
14,600.03	90.02	180.12	7,102.95	-7,579.42	-1,837.23	7,782.63	0.00	0.00	0.00
14,700.03	90.02	180.12	7,102.92	-7,679.42	-1,837.44	7,881.17	0.00	0.00	0.00
14,800.03	90.02	180.12	7,102.89	-7,779.42	-1,837.64	7,979.71	0.00	0.00	0.00
14,900.03	90.02	180.12	7,102.86	-7,879.42	-1,837.84	8,078.25	0.00	0.00	0.00
15,000.03	90.02	180.12	7,102.82	-7,979.42	-1,838.04	8,176.79	0.00	0.00	0.00
15,100.03	90.02	180.12	7,102.79	-8,079.42	-1,838.24	8,275.33	0.00	0.00	0.00
15,200.03	90.02	180.12	7,102.76	-8,179.42	-1,838.44	8,373.86	0.00	0.00	0.00

<b>Database:</b>	DB_Jul2216dt_v14	<b>Local Co-ordinate Reference:</b>	Well Walla 5-3-1L
<b>Company:</b>	Confluence Resources	<b>TVD Reference:</b>	RKB=5074+25 @ 5099.00ft
<b>Project:</b>	Weld County, Colorado	<b>MD Reference:</b>	RKB=5074+25 @ 5099.00ft
<b>Site:</b>	Section 33-T01N-R65W	<b>North Reference:</b>	True
<b>Well:</b>	Walla 5-3-1L	<b>Survey Calculation Method:</b>	Minimum Curvature
<b>Wellbore:</b>	Original Hole		
<b>Design:</b>	plan1		

Planned Survey										
Measured Depth (ft)	Inclination (°)	Azimuth (°)	Vertical Depth (ft)	+N/-S (ft)	+E/-W (ft)	Vertical Section (ft)	Dogleg Rate (°/100ft)	Build Rate (°/100ft)	Turn Rate (°/100ft)	
15,300.03	90.02	180.12	7,102.73	-8,279.42	-1,838.65	8,472.40	0.00	0.00	0.00	
15,400.03	90.02	180.12	7,102.70	-8,379.42	-1,838.85	8,570.94	0.00	0.00	0.00	
15,500.03	90.02	180.12	7,102.66	-8,479.42	-1,839.05	8,669.48	0.00	0.00	0.00	
15,600.03	90.02	180.12	7,102.63	-8,579.42	-1,839.25	8,768.02	0.00	0.00	0.00	
15,700.03	90.02	180.12	7,102.60	-8,679.42	-1,839.45	8,866.56	0.00	0.00	0.00	
15,800.03	90.02	180.12	7,102.57	-8,779.42	-1,839.66	8,965.10	0.00	0.00	0.00	
15,900.03	90.02	180.12	7,102.53	-8,879.42	-1,839.86	9,063.64	0.00	0.00	0.00	
16,000.03	90.02	180.12	7,102.50	-8,979.42	-1,840.06	9,162.18	0.00	0.00	0.00	
16,100.03	90.02	180.12	7,102.47	-9,079.42	-1,840.26	9,260.72	0.00	0.00	0.00	
16,200.03	90.02	180.12	7,102.44	-9,179.42	-1,840.46	9,359.26	0.00	0.00	0.00	
16,300.03	90.02	180.12	7,102.41	-9,279.42	-1,840.66	9,457.79	0.00	0.00	0.00	
16,400.03	90.02	180.12	7,102.37	-9,379.42	-1,840.87	9,556.33	0.00	0.00	0.00	
16,500.03	90.02	180.12	7,102.34	-9,479.42	-1,841.07	9,654.87	0.00	0.00	0.00	
16,600.03	90.02	180.12	7,102.31	-9,579.42	-1,841.27	9,753.41	0.00	0.00	0.00	
16,700.03	90.02	180.12	7,102.28	-9,679.42	-1,841.47	9,851.95	0.00	0.00	0.00	
16,800.03	90.02	180.12	7,102.24	-9,779.42	-1,841.67	9,950.49	0.00	0.00	0.00	
16,900.03	90.02	180.12	7,102.21	-9,879.42	-1,841.88	10,049.03	0.00	0.00	0.00	
17,000.03	90.02	180.12	7,102.18	-9,979.42	-1,842.08	10,147.57	0.00	0.00	0.00	
17,100.03	90.02	180.12	7,102.15	-10,079.42	-1,842.28	10,246.11	0.00	0.00	0.00	
17,200.03	90.02	180.12	7,102.12	-10,179.42	-1,842.48	10,344.65	0.00	0.00	0.00	
17,300.03	90.02	180.12	7,102.08	-10,279.42	-1,842.68	10,443.18	0.00	0.00	0.00	
17,400.04	90.02	180.12	7,102.05	-10,379.42	-1,842.88	10,541.72	0.00	0.00	0.00	
17,500.04	90.02	180.12	7,102.02	-10,479.42	-1,843.09	10,640.26	0.00	0.00	0.00	
17,557.71	90.02	180.12	7,102.00	-10,537.10	-1,843.20	10,697.09	0.00	0.00	0.00	
PBHL/TD 17557.71 MD/7102.00 TVD										

Design Targets										
Target Name - hit/miss target - Shape	Dip Angle (°)	Dip Dir. (°)	TVD (ft)	+N/-S (ft)	+E/-W (ft)	Northing (usft)	Easting (usft)	Latitude Longitude		
BHL Walla 5-3-1L 470 F: - plan hits target center - Point	0.00	0.00	7,102.00	-10,537.10	-1,843.20	14,517,307.43	1,728,968.37	39.97368328		-104.68392304
LP Walla 5-3-1L 470 FNI - plan hits target center - Point	0.00	0.00	7,105.00	-1,230.37	-1,824.42	14,526,614.15	1,728,953.46	39.99924115		-104.68385847

Plan Annotations					
Measured Depth (ft)	Vertical Depth (ft)	Local Coordinates			
		+N/-S (ft)	+E/-W (ft)	Comment	
5,000.00	5,000.00	0.00	0.00	KOP Begin 10°/100' build	
5,470.74	5,419.54	-74.11	-167.04	Begin 47.07° tangent	
7,524.38	6,818.19	-683.93	-1,541.57	Begin 10°/100' build/turn	
8,250.96	7,105.00	-1,230.37	-1,824.42	LP Begin 90.02° lateral section	
17,557.71	7,102.00	-10,537.10	-1,843.20	PBHL/TD 17557.71 MD/7102.00 TVD	

<b>Database:</b>	DB_Jul2216dt_v14	<b>Local Co-ordinate Reference:</b>	Well Walla 5-3-1L
<b>Company:</b>	Confluence Resources	<b>TVD Reference:</b>	RKB=5074+25 @ 5099.00ft
<b>Project:</b>	Weld County, Colorado	<b>MD Reference:</b>	RKB=5074+25 @ 5099.00ft
<b>Site:</b>	Section 33-T01N-R65W	<b>North Reference:</b>	True
<b>Well:</b>	Walla 5-3-1L	<b>Survey Calculation Method:</b>	Minimum Curvature
<b>Wellbore:</b>	Original Hole		
<b>Design:</b>	plan1		

<b>Project</b>	Weld County, Colorado		
<b>Map System:</b>	Universal Transverse Mercator (US Survey Feet)	<b>System Datum:</b>	Mean Sea Level
<b>Geo Datum:</b>	NAD83 Colorado - HARN		
<b>Map Zone:</b>	Zone 13N (108 W to 102 W)		

Site		Section 33-T01N-R65W			
Site Position:		Northing:	14,527,751.12 usft	Latitude:	40.00234552
From:	Map	Easting:	1,730,774.27 usft	Longitude:	-104.67734224
Position Uncertainty:	0.00 ft	Slot Radius:	13-3/16 "	Grid Convergence:	0.21 °

Well	Walla 5-3-1L, Surf loc: 760 FSL 300 FWL Sec33-T01N-R65W					
Well Position	+N/-S	0.00 ft	Northing:	14,527,851.11 usft	Latitude:	40.00262011
	+E/-W	0.00 ft	Easting:	1,730,773.41 usft	Longitude:	-104.67734402
Position Uncertainty		0.00 ft	Wellhead Elevation:		Ground Level:	5,074.00 ft

<b>Wellbore</b>	Original Hole				
<b>Magnetics</b>	<b>Model Name</b>	<b>Sample Date</b>	<b>Declination (°)</b>	<b>Dip Angle (°)</b>	<b>Field Strength (nT)</b>
	HDGM	5/18/2017	8.28	66.45	52,149.90000000

<b>Design</b>	plan1			
<b>Audit Notes:</b>				
<b>Version:</b>	<b>Phase:</b>	PLAN	<b>Tie On Depth:</b>	0.00
<b>Vertical Section:</b>	<b>Depth From (TVD) (ft)</b>	<b>+N/-S (ft)</b>	<b>+E/-W (ft)</b>	<b>Direction (°)</b>
	0.00	0.00	0.00	189.92

<b>Plan Survey Tool Program</b>	<b>Date</b>	5/18/2017		
<b>Depth From (ft)</b>	<b>Depth To (ft)</b>	<b>Survey (Wellbore)</b>	<b>Tool Name</b>	<b>Remarks</b>
1	0.00	17,557.71 plan1 (Original Hole)		

<b>Plan Sections</b>										
<b>Measured Depth (ft)</b>	<b>Inclination (°)</b>	<b>Azimuth (°)</b>	<b>Vertical Depth (ft)</b>	<b>+N/-S (ft)</b>	<b>+E/-W (ft)</b>	<b>Dogleg Rate (°/100ft)</b>	<b>Build Rate (°/100ft)</b>	<b>Turn Rate (°/100ft)</b>	<b>TFO (°)</b>	<b>Target</b>
0.00	0.00	0.00	0.00	0.00	0.00	0.00	0.00	0.00	0.00	
5,000.00	0.00	0.00	5,000.00	0.00	0.00	0.00	0.00	0.00	0.00	
5,470.74	47.07	246.08	5,419.54	-74.11	-167.04	10.00	10.00	0.00	246.08	
7,524.38	47.07	246.08	6,818.19	-683.93	-1,541.57	0.00	0.00	0.00	0.00	
8,250.96	90.02	180.12	7,105.00	-1,230.37	-1,824.42	10.00	5.91	-9.08	-73.09	LP Walla 5-3-1L 470 F
17,557.71	90.02	180.12	7,102.00	-10,537.10	-1,843.20	0.00	0.00	0.00	0.00	BHL Walla 5-3-1L 470



<b>Database:</b>	DB_Jul2216dt_v14	<b>Local Co-ordinate Reference:</b>	Well Walla 5-3-1L
<b>Company:</b>	Confluence Resources	<b>TVD Reference:</b>	RKB=5074+25 @ 5099.00ft
<b>Project:</b>	Weld County, Colorado	<b>MD Reference:</b>	RKB=5074+25 @ 5099.00ft
<b>Site:</b>	Section 33-T01N-R65W	<b>North Reference:</b>	True
<b>Well:</b>	Walla 5-3-1L	<b>Survey Calculation Method:</b>	Minimum Curvature
<b>Wellbore:</b>	Original Hole		
<b>Design:</b>	plan1		

Planned Survey									
Measured Depth (ft)	Inclination (°)	Azimuth (°)	Vertical Depth (ft)	+N/-S (ft)	+E/-W (ft)	Map Northing (usft)	Map Easting (usft)	Latitude	Longitude
0.00	0.00	0.00	0.00	0.00	0.00	14,527,851.11	1,730,773.41	40.00262011	-104.67734402
100.00	0.00	0.00	100.00	0.00	0.00	14,527,851.11	1,730,773.41	40.00262011	-104.67734402
200.00	0.00	0.00	200.00	0.00	0.00	14,527,851.11	1,730,773.41	40.00262011	-104.67734402
300.00	0.00	0.00	300.00	0.00	0.00	14,527,851.11	1,730,773.41	40.00262011	-104.67734402
400.00	0.00	0.00	400.00	0.00	0.00	14,527,851.11	1,730,773.41	40.00262011	-104.67734402
500.00	0.00	0.00	500.00	0.00	0.00	14,527,851.11	1,730,773.41	40.00262011	-104.67734402
600.00	0.00	0.00	600.00	0.00	0.00	14,527,851.11	1,730,773.41	40.00262011	-104.67734402
700.00	0.00	0.00	700.00	0.00	0.00	14,527,851.11	1,730,773.41	40.00262011	-104.67734402
800.00	0.00	0.00	800.00	0.00	0.00	14,527,851.11	1,730,773.41	40.00262011	-104.67734402
900.00	0.00	0.00	900.00	0.00	0.00	14,527,851.11	1,730,773.41	40.00262011	-104.67734402
1,000.00	0.00	0.00	1,000.00	0.00	0.00	14,527,851.11	1,730,773.41	40.00262011	-104.67734402
1,100.00	0.00	0.00	1,100.00	0.00	0.00	14,527,851.11	1,730,773.41	40.00262011	-104.67734402
1,200.00	0.00	0.00	1,200.00	0.00	0.00	14,527,851.11	1,730,773.41	40.00262011	-104.67734402
1,300.00	0.00	0.00	1,300.00	0.00	0.00	14,527,851.11	1,730,773.41	40.00262011	-104.67734402
1,400.00	0.00	0.00	1,400.00	0.00	0.00	14,527,851.11	1,730,773.41	40.00262011	-104.67734402
1,500.00	0.00	0.00	1,500.00	0.00	0.00	14,527,851.11	1,730,773.41	40.00262011	-104.67734402
1,600.00	0.00	0.00	1,600.00	0.00	0.00	14,527,851.11	1,730,773.41	40.00262011	-104.67734402
1,700.00	0.00	0.00	1,700.00	0.00	0.00	14,527,851.11	1,730,773.41	40.00262011	-104.67734402
1,800.00	0.00	0.00	1,800.00	0.00	0.00	14,527,851.11	1,730,773.41	40.00262011	-104.67734402
1,900.00	0.00	0.00	1,900.00	0.00	0.00	14,527,851.11	1,730,773.41	40.00262011	-104.67734402
2,000.00	0.00	0.00	2,000.00	0.00	0.00	14,527,851.11	1,730,773.41	40.00262011	-104.67734402
2,100.00	0.00	0.00	2,100.00	0.00	0.00	14,527,851.11	1,730,773.41	40.00262011	-104.67734402
2,200.00	0.00	0.00	2,200.00	0.00	0.00	14,527,851.11	1,730,773.41	40.00262011	-104.67734402
2,300.00	0.00	0.00	2,300.00	0.00	0.00	14,527,851.11	1,730,773.41	40.00262011	-104.67734402
2,400.00	0.00	0.00	2,400.00	0.00	0.00	14,527,851.11	1,730,773.41	40.00262011	-104.67734402
2,500.01	0.00	0.00	2,500.01	0.00	0.00	14,527,851.11	1,730,773.41	40.00262011	-104.67734402
2,600.01	0.00	0.00	2,600.01	0.00	0.00	14,527,851.11	1,730,773.41	40.00262011	-104.67734402
2,700.01	0.00	0.00	2,700.01	0.00	0.00	14,527,851.11	1,730,773.41	40.00262011	-104.67734402
2,800.01	0.00	0.00	2,800.01	0.00	0.00	14,527,851.11	1,730,773.41	40.00262011	-104.67734402
2,900.01	0.00	0.00	2,900.01	0.00	0.00	14,527,851.11	1,730,773.41	40.00262011	-104.67734402
3,000.01	0.00	0.00	3,000.01	0.00	0.00	14,527,851.11	1,730,773.41	40.00262011	-104.67734402
3,100.01	0.00	0.00	3,100.01	0.00	0.00	14,527,851.11	1,730,773.41	40.00262011	-104.67734402
3,200.01	0.00	0.00	3,200.01	0.00	0.00	14,527,851.11	1,730,773.41	40.00262011	-104.67734402
3,300.01	0.00	0.00	3,300.01	0.00	0.00	14,527,851.11	1,730,773.41	40.00262011	-104.67734402
3,400.01	0.00	0.00	3,400.01	0.00	0.00	14,527,851.11	1,730,773.41	40.00262011	-104.67734402
3,500.01	0.00	0.00	3,500.01	0.00	0.00	14,527,851.11	1,730,773.41	40.00262011	-104.67734402
3,600.01	0.00	0.00	3,600.01	0.00	0.00	14,527,851.11	1,730,773.41	40.00262011	-104.67734402
3,700.01	0.00	0.00	3,700.01	0.00	0.00	14,527,851.11	1,730,773.41	40.00262011	-104.67734402
3,800.01	0.00	0.00	3,800.01	0.00	0.00	14,527,851.11	1,730,773.41	40.00262011	-104.67734402
3,900.01	0.00	0.00	3,900.01	0.00	0.00	14,527,851.11	1,730,773.41	40.00262011	-104.67734402
4,000.01	0.00	0.00	4,000.01	0.00	0.00	14,527,851.11	1,730,773.41	40.00262011	-104.67734402
4,100.01	0.00	0.00	4,100.01	0.00	0.00	14,527,851.11	1,730,773.41	40.00262011	-104.67734402
4,200.01	0.00	0.00	4,200.01	0.00	0.00	14,527,851.11	1,730,773.41	40.00262011	-104.67734402
4,300.01	0.00	0.00	4,300.01	0.00	0.00	14,527,851.11	1,730,773.41	40.00262011	-104.67734402
4,400.01	0.00	0.00	4,400.01	0.00	0.00	14,527,851.11	1,730,773.41	40.00262011	-104.67734402
4,500.01	0.00	0.00	4,500.01	0.00	0.00	14,527,851.11	1,730,773.41	40.00262011	-104.67734402
4,600.01	0.00	0.00	4,600.01	0.00	0.00	14,527,851.11	1,730,773.41	40.00262011	-104.67734402
4,700.01	0.00	0.00	4,700.01	0.00	0.00	14,527,851.11	1,730,773.41	40.00262011	-104.67734402
4,800.01	0.00	0.00	4,800.01	0.00	0.00	14,527,851.11	1,730,773.41	40.00262011	-104.67734402
4,900.01	0.00	0.00	4,900.01	0.00	0.00	14,527,851.11	1,730,773.41	40.00262011	-104.67734402
5,000.00	0.00	0.00	5,000.00	0.00	0.00	14,527,851.11	1,730,773.41	40.00262011	-104.67734402
KOP Begin 10°/100' build									
5,000.01	0.00	246.08	5,000.01	0.00	0.00	14,527,851.11	1,730,773.41	40.00262011	-104.67734402
5,100.01	10.00	246.08	5,099.50	-3.53	-7.96	14,527,847.56	1,730,765.46	40.00261042	-104.67737243



<b>Database:</b>	DB_Jul2216dt_v14	<b>Local Co-ordinate Reference:</b>	Well Walla 5-3-1L
<b>Company:</b>	Confluence Resources	<b>TVD Reference:</b>	RKB=5074+25 @ 5099.00ft
<b>Project:</b>	Weld County, Colorado	<b>MD Reference:</b>	RKB=5074+25 @ 5099.00ft
<b>Site:</b>	Section 33-T01N-R65W	<b>North Reference:</b>	True
<b>Well:</b>	Walla 5-3-1L	<b>Survey Calculation Method:</b>	Minimum Curvature
<b>Wellbore:</b>	Original Hole		
<b>Design:</b>	plan1		

Planned Survey									
Measured Depth (ft)	Inclination (°)	Azimuth (°)	Vertical Depth (ft)	+N/-S (ft)	+E/-W (ft)	Map Northing (usft)	Map Easting (usft)	Latitude	Longitude
5,200.01	20.00	246.08	5,195.97	-14.01	-31.59	14,527,836.99	1,730,741.87	40.00258163	-104.67745681
5,300.01	30.00	246.08	5,286.49	-31.13	-70.17	14,527,819.73	1,730,703.35	40.00253462	-104.67759459
5,400.01	40.00	246.08	5,368.30	-54.36	-122.54	14,527,796.31	1,730,651.07	40.00247082	-104.67778157
5,470.74	47.07	246.08	5,419.54	-74.11	-167.04	14,527,776.40	1,730,606.64	40.00241660	-104.67794049
<b>Begin 47.07° tangent</b>									
5,500.01	47.07	246.08	5,439.47	-82.80	-186.63	14,527,767.64	1,730,587.08	40.00239273	-104.67801045
5,600.01	47.07	246.08	5,507.58	-112.50	-253.56	14,527,737.70	1,730,520.25	40.00231118	-104.67824946
5,700.01	47.07	246.08	5,575.69	-142.19	-320.50	14,527,707.76	1,730,453.43	40.00222963	-104.67848846
5,800.01	47.07	246.08	5,643.79	-171.89	-387.43	14,527,677.83	1,730,386.61	40.00214808	-104.67872746
5,900.01	47.07	246.08	5,711.90	-201.58	-454.36	14,527,647.89	1,730,319.78	40.00206653	-104.67896646
6,000.01	47.07	246.08	5,780.00	-231.28	-521.29	14,527,617.95	1,730,252.96	40.00198498	-104.67920546
6,100.01	47.07	246.08	5,848.11	-260.97	-588.22	14,527,588.02	1,730,186.14	40.00190343	-104.67944446
6,200.01	47.07	246.08	5,916.22	-290.66	-655.15	14,527,558.08	1,730,119.31	40.00182188	-104.67968346
6,300.01	47.07	246.08	5,984.32	-320.36	-722.08	14,527,528.14	1,730,052.49	40.00174033	-104.67992246
6,400.01	47.07	246.08	6,052.43	-350.05	-789.02	14,527,498.21	1,729,985.67	40.00165877	-104.68016145
6,500.01	47.07	246.08	6,120.53	-379.75	-855.95	14,527,468.27	1,729,918.84	40.00157722	-104.68040045
6,600.01	47.07	246.08	6,188.64	-409.44	-922.88	14,527,438.33	1,729,852.02	40.00149567	-104.68063945
6,700.01	47.07	246.08	6,256.75	-439.14	-989.81	14,527,408.40	1,729,785.20	40.00141411	-104.68087844
6,800.01	47.07	246.08	6,324.85	-468.83	-1,056.74	14,527,378.46	1,729,718.37	40.00133256	-104.68111744
6,900.01	47.07	246.08	6,392.96	-498.53	-1,123.67	14,527,348.52	1,729,651.55	40.00125101	-104.68135643
7,000.01	47.07	246.08	6,461.07	-528.22	-1,190.61	14,527,318.59	1,729,584.73	40.00116945	-104.68159543
7,100.01	47.07	246.08	6,529.17	-557.92	-1,257.54	14,527,288.65	1,729,517.90	40.00108789	-104.68183442
7,200.01	47.07	246.08	6,597.28	-587.61	-1,324.47	14,527,258.71	1,729,451.08	40.00100634	-104.68207342
7,300.01	47.07	246.08	6,665.38	-617.31	-1,391.40	14,527,228.78	1,729,384.26	40.00092478	-104.68231241
7,400.01	47.07	246.08	6,733.49	-647.00	-1,458.33	14,527,198.84	1,729,317.43	40.00084322	-104.68255140
7,500.02	47.07	246.08	6,801.60	-676.70	-1,525.26	14,527,168.90	1,729,250.61	40.00076167	-104.68279039
7,524.38	47.07	246.08	6,818.19	-683.93	-1,541.57	14,527,161.61	1,729,234.33	40.00074179	-104.68284862
<b>Begin 10°/100' build/turn</b>									
7,600.02	49.68	236.57	6,868.49	-711.09	-1,591.02	14,527,134.27	1,729,184.98	40.00066722	-104.68302517
7,700.02	54.19	225.22	6,930.25	-760.78	-1,651.77	14,527,084.36	1,729,124.41	40.00053074	-104.68324209
7,800.02	59.66	215.21	6,984.90	-824.76	-1,705.57	14,527,020.19	1,729,070.84	40.00035503	-104.68343419
7,900.02	65.79	206.32	7,030.78	-901.08	-1,750.79	14,526,943.70	1,729,025.90	40.00014542	-104.68359563
8,000.02	72.40	198.28	7,066.49	-987.43	-1,786.04	14,526,857.22	1,728,990.96	39.99990828	-104.68372150
8,100.02	79.31	190.82	7,090.94	-1,081.19	-1,810.27	14,526,763.38	1,728,967.07	39.99965082	-104.68380799
8,200.02	86.38	183.69	7,103.40	-1,179.49	-1,822.73	14,526,665.03	1,728,954.96	39.99938085	-104.68385246
8,250.96	90.02	180.12	7,105.00	-1,230.37	-1,824.42	14,526,614.15	1,728,953.46	39.99924115	-104.68385847
<b>LP Begin 90.02° lateral section</b>									
8,300.02	90.02	180.12	7,104.98	-1,279.42	-1,824.52	14,526,565.10	1,728,953.54	39.99910642	-104.68385881
8,400.02	90.02	180.12	7,104.95	-1,379.42	-1,824.72	14,526,465.10	1,728,953.70	39.99883181	-104.68385950
8,500.02	90.02	180.12	7,104.92	-1,479.42	-1,824.92	14,526,365.10	1,728,953.86	39.99855719	-104.68386020
8,600.02	90.02	180.12	7,104.89	-1,579.42	-1,825.12	14,526,265.10	1,728,954.02	39.99828257	-104.68386089
8,700.02	90.02	180.12	7,104.86	-1,679.42	-1,825.33	14,526,165.10	1,728,954.18	39.99800796	-104.68386159
8,800.02	90.02	180.12	7,104.82	-1,779.42	-1,825.53	14,526,065.10	1,728,954.34	39.99773334	-104.68386228
8,900.02	90.02	180.12	7,104.79	-1,879.42	-1,825.73	14,525,965.10	1,728,954.50	39.99745872	-104.68386298
9,000.02	90.02	180.12	7,104.76	-1,979.42	-1,825.93	14,525,865.10	1,728,954.66	39.99718411	-104.68386367
9,100.02	90.02	180.12	7,104.73	-2,079.42	-1,826.13	14,525,765.10	1,728,954.82	39.99690949	-104.68386436
9,200.02	90.02	180.12	7,104.69	-2,179.42	-1,826.34	14,525,665.10	1,728,954.98	39.99663487	-104.68386506
9,300.02	90.02	180.12	7,104.66	-2,279.42	-1,826.54	14,525,565.10	1,728,955.14	39.99636026	-104.68386575
9,400.02	90.02	180.12	7,104.63	-2,379.42	-1,826.74	14,525,465.10	1,728,955.30	39.99608564	-104.68386645
9,500.02	90.02	180.12	7,104.60	-2,479.42	-1,826.94	14,525,365.10	1,728,955.46	39.99581102	-104.68386714
9,600.02	90.02	180.12	7,104.57	-2,579.42	-1,827.14	14,525,265.10	1,728,955.62	39.99553641	-104.68386783
9,700.02	90.02	180.12	7,104.53	-2,679.42	-1,827.34	14,525,165.10	1,728,955.78	39.99526179	-104.68386853
9,800.02	90.02	180.12	7,104.50	-2,779.42	-1,827.55	14,525,065.10	1,728,955.94	39.99498718	-104.68386922
9,900.02	90.02	180.12	7,104.47	-2,879.42	-1,827.75	14,524,965.10	1,728,956.10	39.99471256	-104.68386992

<b>Database:</b>	DB_Jul2216dt_v14	<b>Local Co-ordinate Reference:</b>	Well Walla 5-3-1L
<b>Company:</b>	Confluence Resources	<b>TVD Reference:</b>	RKB=5074+25 @ 5099.00ft
<b>Project:</b>	Weld County, Colorado	<b>MD Reference:</b>	RKB=5074+25 @ 5099.00ft
<b>Site:</b>	Section 33-T01N-R65W	<b>North Reference:</b>	True
<b>Well:</b>	Walla 5-3-1L	<b>Survey Calculation Method:</b>	Minimum Curvature
<b>Wellbore:</b>	Original Hole		
<b>Design:</b>	plan1		

Planned Survey									
Measured Depth (ft)	Inclination (°)	Azimuth (°)	Vertical Depth (ft)	+N/-S (ft)	+E/-W (ft)	Map Northing (usft)	Map Easting (usft)	Latitude	Longitude
10,000.02	90.02	180.12	7,104.44	-2,979.42	-1,827.95	14,524,865.10	1,728,956.26	39.99443794	-104.68387061
10,100.02	90.02	180.12	7,104.40	-3,079.42	-1,828.15	14,524,765.10	1,728,956.42	39.99416333	-104.68387131
10,200.02	90.02	180.12	7,104.37	-3,179.42	-1,828.35	14,524,665.10	1,728,956.58	39.99388871	-104.68387200
10,300.02	90.02	180.12	7,104.34	-3,279.42	-1,828.56	14,524,565.10	1,728,956.74	39.99361409	-104.68387269
10,400.02	90.02	180.12	7,104.31	-3,379.42	-1,828.76	14,524,465.10	1,728,956.90	39.99333948	-104.68387339
10,500.02	90.02	180.12	7,104.28	-3,479.42	-1,828.96	14,524,365.10	1,728,957.06	39.99306486	-104.68387408
10,600.02	90.02	180.12	7,104.24	-3,579.42	-1,829.16	14,524,265.10	1,728,957.22	39.99279024	-104.68387478
10,700.02	90.02	180.12	7,104.21	-3,679.42	-1,829.36	14,524,165.10	1,728,957.38	39.99251563	-104.68387547
10,800.02	90.02	180.12	7,104.18	-3,779.42	-1,829.56	14,524,065.10	1,728,957.54	39.99224101	-104.68387616
10,900.02	90.02	180.12	7,104.15	-3,879.42	-1,829.77	14,523,965.10	1,728,957.70	39.99196639	-104.68387686
11,000.02	90.02	180.12	7,104.11	-3,979.42	-1,829.97	14,523,865.10	1,728,957.86	39.99169178	-104.68387755
11,100.02	90.02	180.12	7,104.08	-4,079.42	-1,830.17	14,523,765.10	1,728,958.02	39.99141716	-104.68387825
11,200.02	90.02	180.12	7,104.05	-4,179.42	-1,830.37	14,523,665.10	1,728,958.18	39.99114254	-104.68387894
11,300.02	90.02	180.12	7,104.02	-4,279.42	-1,830.57	14,523,565.10	1,728,958.34	39.99086792	-104.68387963
11,400.02	90.02	180.12	7,103.99	-4,379.42	-1,830.78	14,523,465.10	1,728,958.50	39.99059331	-104.68388033
11,500.02	90.02	180.12	7,103.95	-4,479.42	-1,830.98	14,523,365.10	1,728,958.66	39.99031869	-104.68388102
11,600.02	90.02	180.12	7,103.92	-4,579.42	-1,831.18	14,523,265.10	1,728,958.82	39.99004407	-104.68388172
11,700.02	90.02	180.12	7,103.89	-4,679.42	-1,831.38	14,523,165.10	1,728,958.98	39.98976946	-104.68388241
11,800.02	90.02	180.12	7,103.86	-4,779.42	-1,831.58	14,523,065.10	1,728,959.14	39.98949484	-104.68388310
11,900.02	90.02	180.12	7,103.82	-4,879.42	-1,831.78	14,522,965.10	1,728,959.30	39.98922022	-104.68388380
12,000.02	90.02	180.12	7,103.79	-4,979.42	-1,831.99	14,522,865.10	1,728,959.46	39.98894561	-104.68388449
12,100.02	90.02	180.12	7,103.76	-5,079.42	-1,832.19	14,522,765.10	1,728,959.63	39.98867099	-104.68388519
12,200.02	90.02	180.12	7,103.73	-5,179.42	-1,832.39	14,522,665.10	1,728,959.79	39.98839637	-104.68388588
12,300.02	90.02	180.12	7,103.69	-5,279.42	-1,832.59	14,522,565.10	1,728,959.95	39.98812176	-104.68388657
12,400.03	90.02	180.12	7,103.66	-5,379.42	-1,832.79	14,522,465.10	1,728,960.11	39.98784714	-104.68388727
12,500.03	90.02	180.12	7,103.63	-5,479.42	-1,833.00	14,522,365.10	1,728,960.27	39.98757252	-104.68388796
12,600.03	90.02	180.12	7,103.60	-5,579.42	-1,833.20	14,522,265.10	1,728,960.43	39.98729791	-104.68388865
12,700.03	90.02	180.12	7,103.57	-5,679.42	-1,833.40	14,522,165.10	1,728,960.59	39.98702329	-104.68388935
12,800.03	90.02	180.12	7,103.53	-5,779.42	-1,833.60	14,522,065.10	1,728,960.75	39.98674867	-104.68389004
12,900.03	90.02	180.12	7,103.50	-5,879.42	-1,833.80	14,521,965.10	1,728,960.91	39.98647405	-104.68389074
13,000.03	90.02	180.12	7,103.47	-5,979.42	-1,834.00	14,521,865.10	1,728,961.07	39.98619944	-104.68389143
13,100.03	90.02	180.12	7,103.44	-6,079.42	-1,834.21	14,521,765.10	1,728,961.23	39.98592482	-104.68389212
13,200.03	90.02	180.12	7,103.40	-6,179.42	-1,834.41	14,521,665.10	1,728,961.39	39.98565020	-104.68389282
13,300.03	90.02	180.12	7,103.37	-6,279.42	-1,834.61	14,521,565.10	1,728,961.55	39.98537559	-104.68389351
13,400.03	90.02	180.12	7,103.34	-6,379.42	-1,834.81	14,521,465.10	1,728,961.71	39.98510097	-104.68389420
13,500.03	90.02	180.12	7,103.31	-6,479.42	-1,835.01	14,521,365.10	1,728,961.87	39.98482635	-104.68389490
13,600.03	90.02	180.12	7,103.28	-6,579.42	-1,835.22	14,521,265.10	1,728,962.03	39.98455174	-104.68389559
13,700.03	90.02	180.12	7,103.24	-6,679.42	-1,835.42	14,521,165.10	1,728,962.19	39.98427712	-104.68389629
13,800.03	90.02	180.12	7,103.21	-6,779.42	-1,835.62	14,521,065.10	1,728,962.35	39.98400250	-104.68389698
13,900.03	90.02	180.12	7,103.18	-6,879.42	-1,835.82	14,520,965.10	1,728,962.51	39.98372788	-104.68389767
14,000.03	90.02	180.12	7,103.15	-6,979.42	-1,836.02	14,520,865.10	1,728,962.67	39.98345327	-104.68389837
14,100.03	90.02	180.12	7,103.11	-7,079.42	-1,836.22	14,520,765.10	1,728,962.83	39.98317865	-104.68389906
14,200.03	90.02	180.12	7,103.08	-7,179.42	-1,836.43	14,520,665.10	1,728,962.99	39.98290403	-104.68389975
14,300.03	90.02	180.12	7,103.05	-7,279.42	-1,836.63	14,520,565.10	1,728,963.15	39.98262942	-104.68390045
14,400.03	90.02	180.12	7,103.02	-7,379.42	-1,836.83	14,520,465.10	1,728,963.31	39.98235480	-104.68390114
14,500.03	90.02	180.12	7,102.99	-7,479.42	-1,837.03	14,520,365.10	1,728,963.47	39.98208018	-104.68390183
14,600.03	90.02	180.12	7,102.95	-7,579.42	-1,837.23	14,520,265.10	1,728,963.63	39.98180556	-104.68390253
14,700.03	90.02	180.12	7,102.92	-7,679.42	-1,837.44	14,520,165.10	1,728,963.79	39.98153095	-104.68390322
14,800.03	90.02	180.12	7,102.89	-7,779.42	-1,837.64	14,520,065.10	1,728,963.95	39.98125633	-104.68390392
14,900.03	90.02	180.12	7,102.86	-7,879.42	-1,837.84	14,519,965.10	1,728,964.11	39.98098171	-104.68390461
15,000.03	90.02	180.12	7,102.82	-7,979.42	-1,838.04	14,519,865.10	1,728,964.27	39.98070709	-104.68390530
15,100.03	90.02	180.12	7,102.79	-8,079.42	-1,838.24	14,519,765.10	1,728,964.43	39.98043248	-104.68390600
15,200.03	90.02	180.12	7,102.76	-8,179.42	-1,838.44	14,519,665.11	1,728,964.59	39.98015786	-104.68390669
15,300.03	90.02	180.12	7,102.73	-8,279.42	-1,838.65	14,519,565.11	1,728,964.75	39.97988324	-104.68390738
15,400.03	90.02	180.12	7,102.70	-8,379.42	-1,838.85	14,519,465.11	1,728,964.91	39.97960863	-104.68390808

<b>Database:</b>	DB_Jul2216dt_v14	<b>Local Co-ordinate Reference:</b>	Well Walla 5-3-1L
<b>Company:</b>	Confluence Resources	<b>TVD Reference:</b>	RKB=5074+25 @ 5099.00ft
<b>Project:</b>	Weld County, Colorado	<b>MD Reference:</b>	RKB=5074+25 @ 5099.00ft
<b>Site:</b>	Section 33-T01N-R65W	<b>North Reference:</b>	True
<b>Well:</b>	Walla 5-3-1L	<b>Survey Calculation Method:</b>	Minimum Curvature
<b>Wellbore:</b>	Original Hole		
<b>Design:</b>	plan1		

Planned Survey									
Measured Depth (ft)	Inclination (°)	Azimuth (°)	Vertical Depth (ft)	+N/-S (ft)	+E/-W (ft)	Map Northing (usft)	Map Easting (usft)	Latitude	Longitude
15,500.03	90.02	180.12	7,102.66	-8,479.42	-1,839.05	14,519,365.11	1,728,965.07	39.97933401	-104.68390877
15,600.03	90.02	180.12	7,102.63	-8,579.42	-1,839.25	14,519,265.11	1,728,965.23	39.97905939	-104.68390946
15,700.03	90.02	180.12	7,102.60	-8,679.42	-1,839.45	14,519,165.11	1,728,965.39	39.97878477	-104.68391016
15,800.03	90.02	180.12	7,102.57	-8,779.42	-1,839.66	14,519,065.11	1,728,965.55	39.97851016	-104.68391085
15,900.03	90.02	180.12	7,102.53	-8,879.42	-1,839.86	14,518,965.11	1,728,965.71	39.97823554	-104.68391154
16,000.03	90.02	180.12	7,102.50	-8,979.42	-1,840.06	14,518,865.11	1,728,965.87	39.97796092	-104.68391224
16,100.03	90.02	180.12	7,102.47	-9,079.42	-1,840.26	14,518,765.11	1,728,966.03	39.97768630	-104.68391293
16,200.03	90.02	180.12	7,102.44	-9,179.42	-1,840.46	14,518,665.11	1,728,966.19	39.97741169	-104.68391362
16,300.03	90.02	180.12	7,102.41	-9,279.42	-1,840.66	14,518,565.11	1,728,966.35	39.97713707	-104.68391432
16,400.03	90.02	180.12	7,102.37	-9,379.42	-1,840.87	14,518,465.11	1,728,966.51	39.97686245	-104.68391501
16,500.03	90.02	180.12	7,102.34	-9,479.42	-1,841.07	14,518,365.11	1,728,966.67	39.97658783	-104.68391570
16,600.03	90.02	180.12	7,102.31	-9,579.42	-1,841.27	14,518,265.11	1,728,966.83	39.97631322	-104.68391640
16,700.03	90.02	180.12	7,102.28	-9,679.42	-1,841.47	14,518,165.11	1,728,966.99	39.97603860	-104.68391709
16,800.03	90.02	180.12	7,102.24	-9,779.42	-1,841.67	14,518,065.11	1,728,967.15	39.97576398	-104.68391778
16,900.03	90.02	180.12	7,102.21	-9,879.42	-1,841.88	14,517,965.11	1,728,967.32	39.97548936	-104.68391848
17,000.03	90.02	180.12	7,102.18	-9,979.42	-1,842.08	14,517,865.11	1,728,967.48	39.97521475	-104.68391917
17,100.03	90.02	180.12	7,102.15	-10,079.42	-1,842.28	14,517,765.11	1,728,967.64	39.97494013	-104.68391986
17,200.03	90.02	180.12	7,102.12	-10,179.42	-1,842.48	14,517,665.11	1,728,967.80	39.97466551	-104.68392056
17,300.03	90.02	180.12	7,102.08	-10,279.42	-1,842.68	14,517,565.11	1,728,967.96	39.97439089	-104.68392125
17,400.04	90.02	180.12	7,102.05	-10,379.42	-1,842.88	14,517,465.11	1,728,968.12	39.97411628	-104.68392194
17,500.04	90.02	180.12	7,102.02	-10,479.42	-1,843.09	14,517,365.11	1,728,968.28	39.97384166	-104.68392264
17,557.71	90.02	180.12	7,102.00	-10,537.10	-1,843.20	14,517,307.43	1,728,968.37	39.97368328	-104.68392304
PBHL/TD 17557.71 MD/7102.00 TVD									

Design Targets									
Target Name	Dip Angle (°)	Dip Dir. (°)	TVD (ft)	+N/-S (ft)	+E/-W (ft)	Northing (usft)	Easting (usft)	Latitude	Longitude
- hit/miss target									
- Shape									
BHL Walla 5-3-1L 470 F: - plan hits target center - Point	0.00	0.00	7,102.00	-10,537.10	-1,843.20	14,517,307.43	1,728,968.37	39.97368328	-104.68392304
LP Walla 5-3-1L 470 FNI - plan hits target center - Point	0.00	0.00	7,105.00	-1,230.37	-1,824.42	14,526,614.15	1,728,953.46	39.99924115	-104.68385847

Plan Annotations					
Measured Depth (ft)	Vertical Depth (ft)	Local Coordinates			
		+N/-S (ft)	+E/-W (ft)	Comment	
5,000.00	5,000.00	0.00	0.00	KOP Begin 10°/100' build	
5,470.74	5,419.54	-74.11	-167.04	Begin 47.07° tangent	
7,524.38	6,818.19	-683.93	-1,541.57	Begin 10°/100' build/turn	
8,250.96	7,105.00	-1,230.37	-1,824.42	LP Begin 90.02° lateral section	
17,557.71	7,102.00	-10,537.10	-1,843.20	PBHL/TD 17557.71 MD/7102.00 TVD	