



**Weld County, Colorado**  
**Section 33-T01N-R65W**  
**Walla 5-2-2L**  
**plan1**

Azimuth Corrections:

To convert a Magnetic Direction to a True Direction, Add 8.28° East

Walla 5-2-2L			
Surf loc: 710 FSL 300 FWL Sec33-T01N-R65W			
NAD83 Colorado - HARN			
Universal Transverse Mercator (US Survey Feet)			
Zone 13N (108 W to 102 W)			
RKB=5073+25 @ 5098.00ft			
Northing	Easting	Latitude	Longitude
14527801.12	1730773.84	40.00248283	-104.67734313

Section Details

Sec	MD	Inc	Azi	TVD	+N/-S	+E/-W	Dleg	VSec	Annotation
1	0.00	0.00	0.00	0.00	0.00	0.00	0.00	0.00	
2	5000.00	0.00	0.00	5000.00	0.00	0.00	0.00	0.00	KOP Begin 10°/100' build
3	5293.28	29.33	229.98	5280.64	-47.22	-56.24	10.00	52.02	Begin 29.33° tangent
4	7166.45	29.33	229.98	6913.72	-637.19	-758.92	0.00	701.89	Begin 10°/100' build/turn
5	7882.07	89.96	180.12	7274.00	-1180.19	-914.66	10.00	1256.55	LP Begin 89.96° lateral section
6	17202.65	89.96	180.12	7280.00	-10500.75	-933.50	0.00	10542.16	PBHL/TD 17202.65 MD/7280.00 TVD

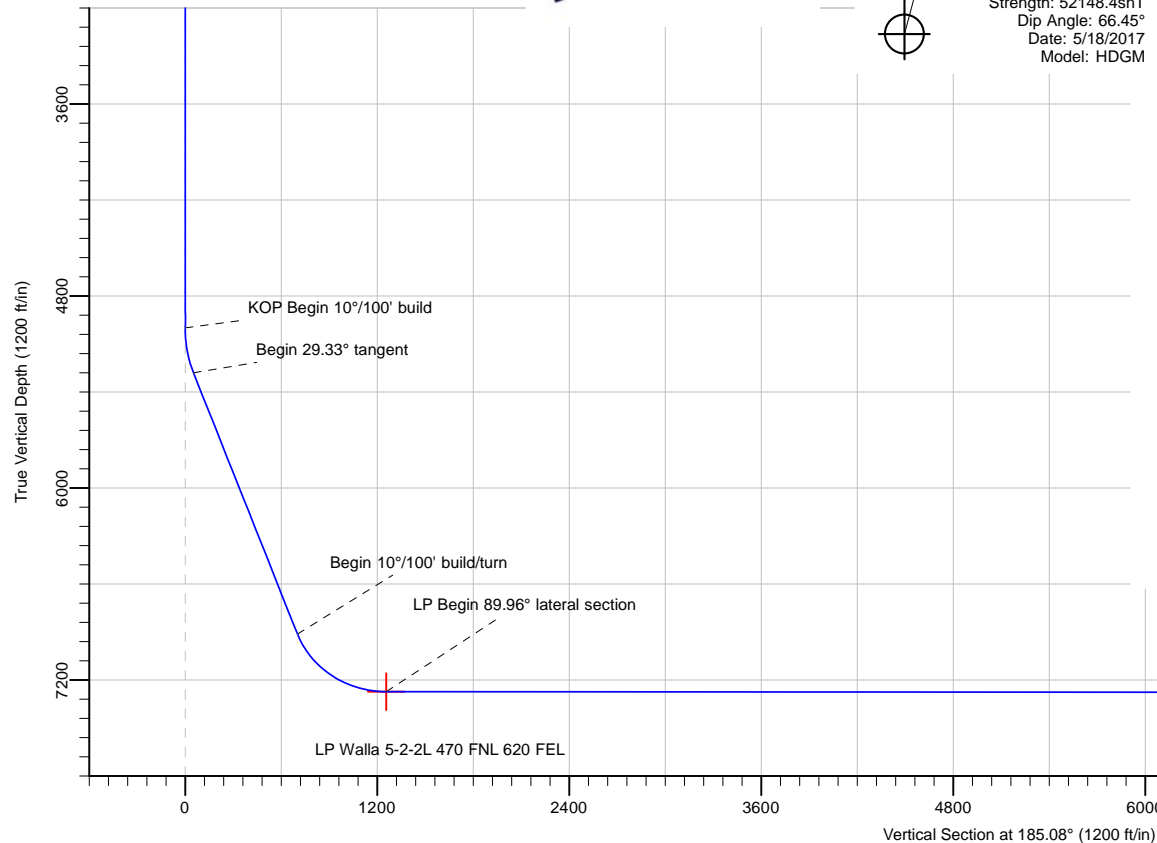
DESIGN TARGET DETAILS

Name	TVD	+N/-S	+E/-W	Northing	Easting	Latitude	Longitude
LP Walla 5-2-2L 470 FNL 620 FEL	7274.00	-1180.19	-914.66	14526617.63	1729863.46	39.99924179	-104.68060911
BHL Walla 5-2-2L 470 FSL 620 FEL	7280.00	-10500.75	-933.50	14517297.08	1729878.36	39.97364595	-104.68067510

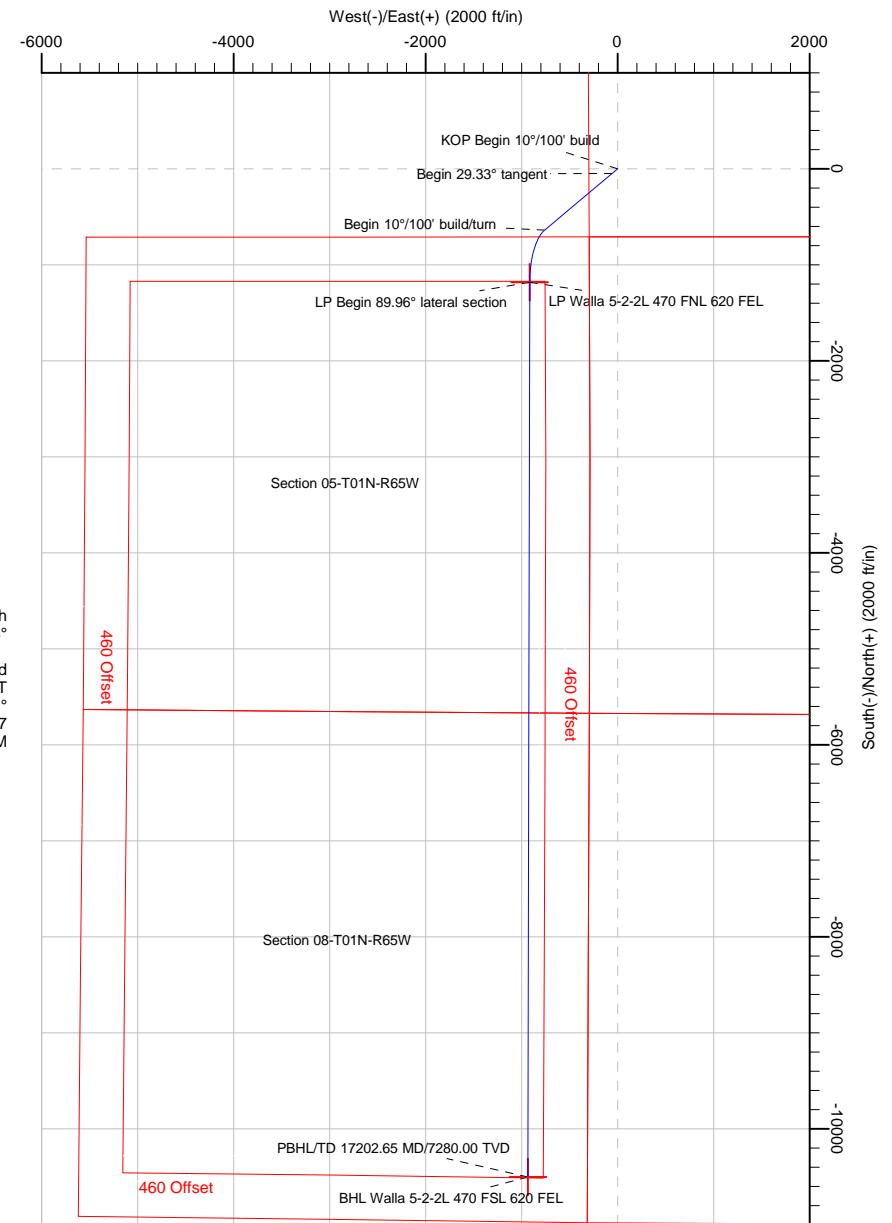


Azimuths to True North  
Magnetic North: 8.28°

Magnetic Field  
Strength: 52148.4snT  
Dip Angle: 66.45°  
Date: 5/18/2017  
Model: HDGM



Date: 20:29, May 18 2017



Note: All lease lines and hard lines are estimates only and are subject to customers approval.

<b>Database:</b>	DB_Jul2216dt_v14	<b>Local Co-ordinate Reference:</b>	Well Walla 5-2-2L
<b>Company:</b>	Confluence Resources	<b>TVD Reference:</b>	RKB=5073+25 @ 5098.00ft
<b>Project:</b>	Weld County, Colorado	<b>MD Reference:</b>	RKB=5073+25 @ 5098.00ft
<b>Site:</b>	Section 33-T01N-R65W	<b>North Reference:</b>	True
<b>Well:</b>	Walla 5-2-2L	<b>Survey Calculation Method:</b>	Minimum Curvature
<b>Wellbore:</b>	Original Hole		
<b>Design:</b>	plan1		

<b>Project</b>	Weld County, Colorado		
<b>Map System:</b>	Universal Transverse Mercator (US Survey Feet)	<b>System Datum:</b>	Mean Sea Level
<b>Geo Datum:</b>	NAD83 Colorado - HARN		
<b>Map Zone:</b>	Zone 13N (108 W to 102 W)		

<b>Site</b>	Section 33-T01N-R65W		
<b>Site Position:</b>		<b>Northing:</b>	14,527,751.12 usft
<b>From:</b>	Map	<b>Easting:</b>	1,730,774.27 usft
<b>Position Uncertainty:</b>	0.00 ft	<b>Slot Radius:</b>	13-3/16 "
		<b>Latitude:</b>	40.00234552
		<b>Longitude:</b>	-104.67734224
		<b>Grid Convergence:</b>	0.21 °

<b>Well</b>	Walla 5-2-2L, Surf loc: 710 FSL 300 FWL Sec33-T01N-R65W		
<b>Well Position</b>	<b>+N/-S</b>	50.00 ft	<b>Northing:</b> 14,527,801.12 usft
	<b>+E/-W</b>	-0.25 ft	<b>Easting:</b> 1,730,773.84 usft
<b>Position Uncertainty</b>	0.00 ft	<b>Wellhead Elevation:</b>	<b>Latitude:</b> 40.00248283
			<b>Longitude:</b> -104.67734313
			<b>Ground Level:</b> 5,073.00 ft

<b>Wellbore</b>	Original Hole				
<b>Magnetics</b>	<b>Model Name</b>	<b>Sample Date</b>	<b>Declination (°)</b>	<b>Dip Angle (°)</b>	<b>Field Strength (nT)</b>
	HDGM	5/18/2017	8.28	66.45	52,148.40000000

<b>Design</b>	plan1			
<b>Audit Notes:</b>				
<b>Version:</b>	<b>Phase:</b>	PLAN	<b>Tie On Depth:</b>	0.00
<b>Vertical Section:</b>	<b>Depth From (TVD) (ft)</b>	<b>+N/-S (ft)</b>	<b>+E/-W (ft)</b>	<b>Direction (°)</b>
	0.00	0.00	0.00	185.08

<b>Plan Survey Tool Program</b>	<b>Date</b>	5/18/2017		
<b>Depth From (ft)</b>	<b>Depth To (ft)</b>	<b>Survey (Wellbore)</b>	<b>Tool Name</b>	<b>Remarks</b>
1	0.00	17,202.66	plan1 (Original Hole)	

<b>Plan Sections</b>										
<b>Measured Depth (ft)</b>	<b>Inclination (°)</b>	<b>Azimuth (°)</b>	<b>Vertical Depth (ft)</b>	<b>+N/-S (ft)</b>	<b>+E/-W (ft)</b>	<b>Dogleg Rate (°/100ft)</b>	<b>Build Rate (°/100ft)</b>	<b>Turn Rate (°/100ft)</b>	<b>TFO (°)</b>	<b>Target</b>
0.00	0.00	0.00	0.00	0.00	0.00	0.00	0.00	0.00	0.00	
5,000.00	0.00	0.00	5,000.00	0.00	0.00	0.00	0.00	0.00	0.00	
5,293.28	29.33	229.98	5,280.64	-47.22	-56.24	10.00	10.00	0.00	229.98	
7,166.45	29.33	229.98	6,913.72	-637.19	-758.92	0.00	0.00	0.00	0.00	
7,882.07	89.96	180.12	7,274.00	-1,180.19	-914.66	10.00	8.47	-6.97	-53.70	LP Walla 5-2-2L 470 F
17,202.66	89.96	180.12	7,280.00	-10,500.75	-933.50	0.00	0.00	0.00	0.00	BHL Walla 5-2-2L 470

<b>Database:</b>	DB_Jul2216dt_v14	<b>Local Co-ordinate Reference:</b>	Well Walla 5-2-2L
<b>Company:</b>	Confluence Resources	<b>TVD Reference:</b>	RKB=5073+25 @ 5098.00ft
<b>Project:</b>	Weld County, Colorado	<b>MD Reference:</b>	RKB=5073+25 @ 5098.00ft
<b>Site:</b>	Section 33-T01N-R65W	<b>North Reference:</b>	True
<b>Well:</b>	Walla 5-2-2L	<b>Survey Calculation Method:</b>	Minimum Curvature
<b>Wellbore:</b>	Original Hole		
<b>Design:</b>	plan1		

Planned Survey									
Measured Depth (ft)	Inclination (°)	Azimuth (°)	Vertical Depth (ft)	+N/-S (ft)	+E/-W (ft)	Vertical Section (ft)	Dogleg Rate (°/100ft)	Build Rate (°/100ft)	Turn Rate (°/100ft)
0.00	0.00	0.00	0.00	0.00	0.00	0.00	0.00	0.00	0.00
100.00	0.00	0.00	100.00	0.00	0.00	0.00	0.00	0.00	0.00
200.00	0.00	0.00	200.00	0.00	0.00	0.00	0.00	0.00	0.00
300.00	0.00	0.00	300.00	0.00	0.00	0.00	0.00	0.00	0.00
400.00	0.00	0.00	400.00	0.00	0.00	0.00	0.00	0.00	0.00
500.00	0.00	0.00	500.00	0.00	0.00	0.00	0.00	0.00	0.00
600.00	0.00	0.00	600.00	0.00	0.00	0.00	0.00	0.00	0.00
700.00	0.00	0.00	700.00	0.00	0.00	0.00	0.00	0.00	0.00
800.00	0.00	0.00	800.00	0.00	0.00	0.00	0.00	0.00	0.00
900.00	0.00	0.00	900.00	0.00	0.00	0.00	0.00	0.00	0.00
1,000.00	0.00	0.00	1,000.00	0.00	0.00	0.00	0.00	0.00	0.00
1,100.00	0.00	0.00	1,100.00	0.00	0.00	0.00	0.00	0.00	0.00
1,200.00	0.00	0.00	1,200.00	0.00	0.00	0.00	0.00	0.00	0.00
1,300.00	0.00	0.00	1,300.00	0.00	0.00	0.00	0.00	0.00	0.00
1,400.00	0.00	0.00	1,400.00	0.00	0.00	0.00	0.00	0.00	0.00
1,500.00	0.00	0.00	1,500.00	0.00	0.00	0.00	0.00	0.00	0.00
1,600.00	0.00	0.00	1,600.00	0.00	0.00	0.00	0.00	0.00	0.00
1,700.00	0.00	0.00	1,700.00	0.00	0.00	0.00	0.00	0.00	0.00
1,800.00	0.00	0.00	1,800.00	0.00	0.00	0.00	0.00	0.00	0.00
1,900.00	0.00	0.00	1,900.00	0.00	0.00	0.00	0.00	0.00	0.00
2,000.00	0.00	0.00	2,000.00	0.00	0.00	0.00	0.00	0.00	0.00
2,100.00	0.00	0.00	2,100.00	0.00	0.00	0.00	0.00	0.00	0.00
2,200.00	0.00	0.00	2,200.00	0.00	0.00	0.00	0.00	0.00	0.00
2,300.00	0.00	0.00	2,300.00	0.00	0.00	0.00	0.00	0.00	0.00
2,400.00	0.00	0.00	2,400.00	0.00	0.00	0.00	0.00	0.00	0.00
2,500.01	0.00	0.00	2,500.01	0.00	0.00	0.00	0.00	0.00	0.00
2,600.01	0.00	0.00	2,600.01	0.00	0.00	0.00	0.00	0.00	0.00
2,700.01	0.00	0.00	2,700.01	0.00	0.00	0.00	0.00	0.00	0.00
2,800.01	0.00	0.00	2,800.01	0.00	0.00	0.00	0.00	0.00	0.00
2,900.01	0.00	0.00	2,900.01	0.00	0.00	0.00	0.00	0.00	0.00
3,000.01	0.00	0.00	3,000.01	0.00	0.00	0.00	0.00	0.00	0.00
3,100.01	0.00	0.00	3,100.01	0.00	0.00	0.00	0.00	0.00	0.00
3,200.01	0.00	0.00	3,200.01	0.00	0.00	0.00	0.00	0.00	0.00
3,300.01	0.00	0.00	3,300.01	0.00	0.00	0.00	0.00	0.00	0.00
3,400.01	0.00	0.00	3,400.01	0.00	0.00	0.00	0.00	0.00	0.00
3,500.01	0.00	0.00	3,500.01	0.00	0.00	0.00	0.00	0.00	0.00
3,600.01	0.00	0.00	3,600.01	0.00	0.00	0.00	0.00	0.00	0.00
3,700.01	0.00	0.00	3,700.01	0.00	0.00	0.00	0.00	0.00	0.00
3,800.01	0.00	0.00	3,800.01	0.00	0.00	0.00	0.00	0.00	0.00
3,900.01	0.00	0.00	3,900.01	0.00	0.00	0.00	0.00	0.00	0.00
4,000.01	0.00	0.00	4,000.01	0.00	0.00	0.00	0.00	0.00	0.00
4,100.01	0.00	0.00	4,100.01	0.00	0.00	0.00	0.00	0.00	0.00
4,200.01	0.00	0.00	4,200.01	0.00	0.00	0.00	0.00	0.00	0.00
4,300.01	0.00	0.00	4,300.01	0.00	0.00	0.00	0.00	0.00	0.00
4,400.01	0.00	0.00	4,400.01	0.00	0.00	0.00	0.00	0.00	0.00
4,500.01	0.00	0.00	4,500.01	0.00	0.00	0.00	0.00	0.00	0.00
4,600.01	0.00	0.00	4,600.01	0.00	0.00	0.00	0.00	0.00	0.00
4,700.01	0.00	0.00	4,700.01	0.00	0.00	0.00	0.00	0.00	0.00
4,800.01	0.00	0.00	4,800.01	0.00	0.00	0.00	0.00	0.00	0.00
4,900.01	0.00	0.00	4,900.01	0.00	0.00	0.00	0.00	0.00	0.00
5,000.00	0.00	0.00	5,000.00	0.00	0.00	0.00	0.00	0.00	0.00
KOP Begin 10°/100' build									
5,000.01	0.00	229.98	5,000.01	0.00	0.00	0.00	0.00	0.00	0.00
5,100.01	10.00	229.98	5,099.50	-5.60	-6.67	6.17	10.00	10.00	0.00

<b>Database:</b>	DB_Jul2216dt_v14	<b>Local Co-ordinate Reference:</b>	Well Walla 5-2-2L
<b>Company:</b>	Confluence Resources	<b>TVD Reference:</b>	RKB=5073+25 @ 5098.00ft
<b>Project:</b>	Weld County, Colorado	<b>MD Reference:</b>	RKB=5073+25 @ 5098.00ft
<b>Site:</b>	Section 33-T01N-R65W	<b>North Reference:</b>	True
<b>Well:</b>	Walla 5-2-2L	<b>Survey Calculation Method:</b>	Minimum Curvature
<b>Wellbore:</b>	Original Hole		
<b>Design:</b>	plan1		

Planned Survey									
Measured Depth (ft)	Inclination (°)	Azimuth (°)	Vertical Depth (ft)	+N/-S (ft)	+E/-W (ft)	Vertical Section (ft)	Dogleg Rate (°/100ft)	Build Rate (°/100ft)	Turn Rate (°/100ft)
5,200.01	20.00	229.98	5,195.97	-22.22	-26.47	24.48	10.00	10.00	0.00
5,293.28	29.33	229.98	5,280.64	-47.22	-56.24	52.02	10.00	10.00	0.00
Begin 29.33° tangent									
5,300.01	29.33	229.98	5,286.51	-49.34	-58.77	54.35	0.00	0.00	0.00
5,400.01	29.33	229.98	5,373.69	-80.84	-96.28	89.04	0.00	0.00	0.00
5,500.01	29.33	229.98	5,460.87	-112.33	-133.79	123.74	0.00	0.00	0.00
5,600.01	29.33	229.98	5,548.06	-143.83	-171.30	158.43	0.00	0.00	0.00
5,700.01	29.33	229.98	5,635.24	-175.32	-208.82	193.13	0.00	0.00	0.00
5,800.01	29.33	229.98	5,722.42	-206.82	-246.33	227.82	0.00	0.00	0.00
5,900.01	29.33	229.98	5,809.60	-238.31	-283.84	262.51	0.00	0.00	0.00
6,000.01	29.33	229.98	5,896.79	-269.81	-321.36	297.21	0.00	0.00	0.00
6,100.01	29.33	229.98	5,983.97	-301.31	-358.87	331.90	0.00	0.00	0.00
6,200.01	29.33	229.98	6,071.15	-332.80	-396.38	366.59	0.00	0.00	0.00
6,300.01	29.33	229.98	6,158.34	-364.30	-433.89	401.29	0.00	0.00	0.00
6,400.01	29.33	229.98	6,245.52	-395.79	-471.41	435.98	0.00	0.00	0.00
6,500.01	29.33	229.98	6,332.70	-427.29	-508.92	470.68	0.00	0.00	0.00
6,600.01	29.33	229.98	6,419.88	-458.78	-546.43	505.37	0.00	0.00	0.00
6,700.01	29.33	229.98	6,507.07	-490.28	-583.95	540.06	0.00	0.00	0.00
6,800.01	29.33	229.98	6,594.25	-521.78	-621.46	574.76	0.00	0.00	0.00
6,900.01	29.33	229.98	6,681.43	-553.27	-658.97	609.45	0.00	0.00	0.00
7,000.01	29.33	229.98	6,768.62	-584.77	-696.48	644.14	0.00	0.00	0.00
7,100.01	29.33	229.98	6,855.80	-616.26	-734.00	678.84	0.00	0.00	0.00
7,166.45	29.33	229.98	6,913.72	-637.19	-758.92	701.89	0.00	0.00	0.00
Begin 10°/100' build/turn									
7,200.01	31.42	224.79	6,942.68	-648.69	-771.38	714.44	10.00	6.23	-15.47
7,300.01	38.62	212.63	7,024.62	-693.58	-806.67	762.29	10.00	7.20	-12.16
7,400.01	46.73	203.96	7,098.14	-753.29	-838.36	824.57	10.00	8.11	-8.67
7,500.02	55.33	197.38	7,161.01	-825.99	-865.50	899.39	10.00	8.60	-6.57
7,600.02	64.22	192.07	7,211.32	-909.48	-887.26	984.48	10.00	8.89	-5.31
7,700.02	73.28	187.52	7,247.53	-1,001.22	-902.98	1,077.25	10.00	9.06	-4.56
7,800.02	82.43	183.37	7,268.56	-1,098.42	-912.18	1,174.88	10.00	9.15	-4.14
7,882.07	89.96	180.12	7,274.00	-1,180.19	-914.66	1,256.55	10.00	9.18	-3.97
LP Begin 89.96° lateral section									
7,900.02	89.96	180.12	7,274.01	-1,198.13	-914.70	1,274.42	0.00	0.00	0.00
8,000.02	89.96	180.12	7,274.08	-1,298.13	-914.90	1,374.05	0.00	0.00	0.00
8,100.02	89.96	180.12	7,274.14	-1,398.13	-915.10	1,473.67	0.00	0.00	0.00
8,200.02	89.96	180.12	7,274.20	-1,498.13	-915.30	1,573.30	0.00	0.00	0.00
8,300.02	89.96	180.12	7,274.27	-1,598.13	-915.51	1,672.92	0.00	0.00	0.00
8,400.02	89.96	180.12	7,274.33	-1,698.13	-915.71	1,772.55	0.00	0.00	0.00
8,500.02	89.96	180.12	7,274.40	-1,798.13	-915.91	1,872.17	0.00	0.00	0.00
8,600.02	89.96	180.12	7,274.46	-1,898.13	-916.11	1,971.80	0.00	0.00	0.00
8,700.02	89.96	180.12	7,274.53	-1,998.13	-916.31	2,071.42	0.00	0.00	0.00
8,800.02	89.96	180.12	7,274.59	-2,098.13	-916.52	2,171.05	0.00	0.00	0.00
8,900.02	89.96	180.12	7,274.66	-2,198.13	-916.72	2,270.67	0.00	0.00	0.00
9,000.02	89.96	180.12	7,274.72	-2,298.13	-916.92	2,370.30	0.00	0.00	0.00
9,100.02	89.96	180.12	7,274.78	-2,398.13	-917.12	2,469.92	0.00	0.00	0.00
9,200.02	89.96	180.12	7,274.85	-2,498.13	-917.32	2,569.55	0.00	0.00	0.00
9,300.02	89.96	180.12	7,274.91	-2,598.13	-917.53	2,669.17	0.00	0.00	0.00
9,400.02	89.96	180.12	7,274.98	-2,698.13	-917.73	2,768.80	0.00	0.00	0.00
9,500.02	89.96	180.12	7,275.04	-2,798.13	-917.93	2,868.42	0.00	0.00	0.00
9,600.02	89.96	180.12	7,275.11	-2,898.13	-918.13	2,968.05	0.00	0.00	0.00
9,700.02	89.96	180.12	7,275.17	-2,998.13	-918.34	3,067.67	0.00	0.00	0.00
9,800.02	89.96	180.12	7,275.23	-3,098.13	-918.54	3,167.30	0.00	0.00	0.00

<b>Database:</b>	DB_Jul2216dt_v14	<b>Local Co-ordinate Reference:</b>	Well Walla 5-2-2L
<b>Company:</b>	Confluence Resources	<b>TVD Reference:</b>	RKB=5073+25 @ 5098.00ft
<b>Project:</b>	Weld County, Colorado	<b>MD Reference:</b>	RKB=5073+25 @ 5098.00ft
<b>Site:</b>	Section 33-T01N-R65W	<b>North Reference:</b>	True
<b>Well:</b>	Walla 5-2-2L	<b>Survey Calculation Method:</b>	Minimum Curvature
<b>Wellbore:</b>	Original Hole		
<b>Design:</b>	plan1		

Planned Survey										
Measured Depth (ft)	Inclination (°)	Azimuth (°)	Vertical Depth (ft)	+N/-S (ft)	+E/-W (ft)	Vertical Section (ft)	Dogleg Rate (°/100ft)	Build Rate (°/100ft)	Turn Rate (°/100ft)	
9,900.02	89.96	180.12	7,275.30	-3,198.13	-918.74	3,266.92	0.00	0.00	0.00	
10,000.02	89.96	180.12	7,275.36	-3,298.13	-918.94	3,366.55	0.00	0.00	0.00	
10,100.02	89.96	180.12	7,275.43	-3,398.13	-919.14	3,466.17	0.00	0.00	0.00	
10,200.02	89.96	180.12	7,275.49	-3,498.13	-919.35	3,565.80	0.00	0.00	0.00	
10,300.02	89.96	180.12	7,275.56	-3,598.13	-919.55	3,665.42	0.00	0.00	0.00	
10,400.02	89.96	180.12	7,275.62	-3,698.13	-919.75	3,765.05	0.00	0.00	0.00	
10,500.02	89.96	180.12	7,275.69	-3,798.13	-919.95	3,864.67	0.00	0.00	0.00	
10,600.02	89.96	180.12	7,275.75	-3,898.13	-920.16	3,964.30	0.00	0.00	0.00	
10,700.02	89.96	180.12	7,275.81	-3,998.13	-920.36	4,063.92	0.00	0.00	0.00	
10,800.02	89.96	180.12	7,275.88	-4,098.13	-920.56	4,163.55	0.00	0.00	0.00	
10,900.02	89.96	180.12	7,275.94	-4,198.13	-920.76	4,263.17	0.00	0.00	0.00	
11,000.02	89.96	180.12	7,276.01	-4,298.13	-920.96	4,362.80	0.00	0.00	0.00	
11,100.02	89.96	180.12	7,276.07	-4,398.13	-921.17	4,462.42	0.00	0.00	0.00	
11,200.02	89.96	180.12	7,276.14	-4,498.13	-921.37	4,562.05	0.00	0.00	0.00	
11,300.02	89.96	180.12	7,276.20	-4,598.13	-921.57	4,661.67	0.00	0.00	0.00	
11,400.02	89.96	180.12	7,276.26	-4,698.13	-921.77	4,761.30	0.00	0.00	0.00	
11,500.02	89.96	180.12	7,276.33	-4,798.13	-921.97	4,860.92	0.00	0.00	0.00	
11,600.02	89.96	180.12	7,276.39	-4,898.13	-922.18	4,960.55	0.00	0.00	0.00	
11,700.02	89.96	180.12	7,276.46	-4,998.13	-922.38	5,060.17	0.00	0.00	0.00	
11,800.02	89.96	180.12	7,276.52	-5,098.13	-922.58	5,159.80	0.00	0.00	0.00	
11,900.02	89.96	180.12	7,276.59	-5,198.13	-922.78	5,259.42	0.00	0.00	0.00	
12,000.02	89.96	180.12	7,276.65	-5,298.13	-922.99	5,359.05	0.00	0.00	0.00	
12,100.02	89.96	180.12	7,276.72	-5,398.13	-923.19	5,458.67	0.00	0.00	0.00	
12,200.02	89.96	180.12	7,276.78	-5,498.13	-923.39	5,558.30	0.00	0.00	0.00	
12,300.02	89.96	180.12	7,276.84	-5,598.13	-923.59	5,657.92	0.00	0.00	0.00	
12,400.03	89.96	180.12	7,276.91	-5,698.13	-923.79	5,757.55	0.00	0.00	0.00	
12,500.03	89.96	180.12	7,276.97	-5,798.13	-924.00	5,857.17	0.00	0.00	0.00	
12,600.03	89.96	180.12	7,277.04	-5,898.13	-924.20	5,956.80	0.00	0.00	0.00	
12,700.03	89.96	180.12	7,277.10	-5,998.13	-924.40	6,056.42	0.00	0.00	0.00	
12,800.03	89.96	180.12	7,277.17	-6,098.13	-924.60	6,156.05	0.00	0.00	0.00	
12,900.03	89.96	180.12	7,277.23	-6,198.13	-924.80	6,255.67	0.00	0.00	0.00	
13,000.03	89.96	180.12	7,277.29	-6,298.13	-925.01	6,355.30	0.00	0.00	0.00	
13,100.03	89.96	180.12	7,277.36	-6,398.13	-925.21	6,454.92	0.00	0.00	0.00	
13,200.03	89.96	180.12	7,277.42	-6,498.13	-925.41	6,554.55	0.00	0.00	0.00	
13,300.03	89.96	180.12	7,277.49	-6,598.13	-925.61	6,654.17	0.00	0.00	0.00	
13,400.03	89.96	180.12	7,277.55	-6,698.13	-925.82	6,753.80	0.00	0.00	0.00	
13,500.03	89.96	180.12	7,277.62	-6,798.13	-926.02	6,853.42	0.00	0.00	0.00	
13,600.03	89.96	180.12	7,277.68	-6,898.13	-926.22	6,953.05	0.00	0.00	0.00	
13,700.03	89.96	180.12	7,277.75	-6,998.13	-926.42	7,052.67	0.00	0.00	0.00	
13,800.03	89.96	180.12	7,277.81	-7,098.13	-926.62	7,152.30	0.00	0.00	0.00	
13,900.03	89.96	180.12	7,277.87	-7,198.13	-926.83	7,251.92	0.00	0.00	0.00	
14,000.03	89.96	180.12	7,277.94	-7,298.13	-927.03	7,351.55	0.00	0.00	0.00	
14,100.03	89.96	180.12	7,278.00	-7,398.13	-927.23	7,451.18	0.00	0.00	0.00	
14,200.03	89.96	180.12	7,278.07	-7,498.13	-927.43	7,550.80	0.00	0.00	0.00	
14,300.03	89.96	180.12	7,278.13	-7,598.13	-927.64	7,650.43	0.00	0.00	0.00	
14,400.03	89.96	180.12	7,278.20	-7,698.13	-927.84	7,750.05	0.00	0.00	0.00	
14,500.03	89.96	180.12	7,278.26	-7,798.13	-928.04	7,849.68	0.00	0.00	0.00	
14,600.03	89.96	180.12	7,278.32	-7,898.13	-928.24	7,949.30	0.00	0.00	0.00	
14,700.03	89.96	180.12	7,278.39	-7,998.13	-928.44	8,048.93	0.00	0.00	0.00	
14,800.03	89.96	180.12	7,278.45	-8,098.13	-928.65	8,148.55	0.00	0.00	0.00	
14,900.03	89.96	180.12	7,278.52	-8,198.13	-928.85	8,248.18	0.00	0.00	0.00	
15,000.03	89.96	180.12	7,278.58	-8,298.13	-929.05	8,347.80	0.00	0.00	0.00	
15,100.03	89.96	180.12	7,278.65	-8,398.13	-929.25	8,447.43	0.00	0.00	0.00	
15,200.03	89.96	180.12	7,278.71	-8,498.13	-929.45	8,547.05	0.00	0.00	0.00	

<b>Database:</b>	DB_Jul2216dt_v14	<b>Local Co-ordinate Reference:</b>	Well Walla 5-2-2L
<b>Company:</b>	Confluence Resources	<b>TVD Reference:</b>	RKB=5073+25 @ 5098.00ft
<b>Project:</b>	Weld County, Colorado	<b>MD Reference:</b>	RKB=5073+25 @ 5098.00ft
<b>Site:</b>	Section 33-T01N-R65W	<b>North Reference:</b>	True
<b>Well:</b>	Walla 5-2-2L	<b>Survey Calculation Method:</b>	Minimum Curvature
<b>Wellbore:</b>	Original Hole		
<b>Design:</b>	plan1		

Planned Survey									
Measured Depth (ft)	Inclination (°)	Azimuth (°)	Vertical Depth (ft)	+N/-S (ft)	+E/-W (ft)	Vertical Section (ft)	Dogleg Rate (°/100ft)	Build Rate (°/100ft)	Turn Rate (°/100ft)
15,300.03	89.96	180.12	7,278.78	-8,598.13	-929.66	8,646.68	0.00	0.00	0.00
15,400.03	89.96	180.12	7,278.84	-8,698.13	-929.86	8,746.30	0.00	0.00	0.00
15,500.03	89.96	180.12	7,278.90	-8,798.13	-930.06	8,845.93	0.00	0.00	0.00
15,600.03	89.96	180.12	7,278.97	-8,898.13	-930.26	8,945.55	0.00	0.00	0.00
15,700.03	89.96	180.12	7,279.03	-8,998.13	-930.47	9,045.18	0.00	0.00	0.00
15,800.03	89.96	180.12	7,279.10	-9,098.13	-930.67	9,144.80	0.00	0.00	0.00
15,900.03	89.96	180.12	7,279.16	-9,198.13	-930.87	9,244.43	0.00	0.00	0.00
16,000.03	89.96	180.12	7,279.23	-9,298.13	-931.07	9,344.05	0.00	0.00	0.00
16,100.03	89.96	180.12	7,279.29	-9,398.13	-931.27	9,443.68	0.00	0.00	0.00
16,200.03	89.96	180.12	7,279.35	-9,498.13	-931.48	9,543.30	0.00	0.00	0.00
16,300.03	89.96	180.12	7,279.42	-9,598.13	-931.68	9,642.93	0.00	0.00	0.00
16,400.03	89.96	180.12	7,279.48	-9,698.13	-931.88	9,742.55	0.00	0.00	0.00
16,500.03	89.96	180.12	7,279.55	-9,798.13	-932.08	9,842.18	0.00	0.00	0.00
16,600.03	89.96	180.12	7,279.61	-9,898.13	-932.28	9,941.80	0.00	0.00	0.00
16,700.03	89.96	180.12	7,279.68	-9,998.13	-932.49	10,041.43	0.00	0.00	0.00
16,800.03	89.96	180.12	7,279.74	-10,098.13	-932.69	10,141.05	0.00	0.00	0.00
16,900.03	89.96	180.12	7,279.81	-10,198.13	-932.89	10,240.68	0.00	0.00	0.00
17,000.03	89.96	180.12	7,279.87	-10,298.13	-933.09	10,340.30	0.00	0.00	0.00
17,100.03	89.96	180.12	7,279.93	-10,398.13	-933.30	10,439.93	0.00	0.00	0.00
17,200.03	89.96	180.12	7,280.00	-10,498.13	-933.50	10,539.55	0.00	0.00	0.00
17,202.66	89.96	180.12	7,280.00	-10,500.75	-933.50	10,542.16	0.00	0.00	0.00
PBHL/TD 17202.65 MD/7280.00 TVD									

Design Targets									
Target Name - hit/miss target - Shape	Dip Angle (°)	Dip Dir. (°)	TVD (ft)	+N/-S (ft)	+E/-W (ft)	Northing (usft)	Easting (usft)	Latitude	Longitude
LP Walla 5-2-2L 470 FNI - plan hits target center - Point	0.00	0.00	7,274.00	-1,180.19	-914.66	14,526,617.63	1,729,863.46	39.99924179	-104.68060910
BHL Walla 5-2-2L 470 F: - plan hits target center - Point	0.00	0.00	7,280.00	-10,500.75	-933.50	14,517,297.08	1,729,878.36	39.97364595	-104.68067509

Plan Annotations				
Measured Depth (ft)	Vertical Depth (ft)	Local Coordinates		Comment
		+N/-S (ft)	+E/-W (ft)	
5,000.00	5,000.00	0.00	0.00	KOP Begin 10°/100' build
5,293.28	5,280.64	-47.22	-56.24	Begin 29.33° tangent
7,166.45	6,913.72	-637.19	-758.92	Begin 10°/100' build/turn
7,882.07	7,274.00	-1,180.19	-914.66	LP Begin 89.96° lateral section
17,202.66	7,280.00	-10,500.75	-933.50	PBHL/TD 17202.65 MD/7280.00 TVD

<b>Database:</b>	DB_Jul2216dt_v14	<b>Local Co-ordinate Reference:</b>	Well Walla 5-2-2L
<b>Company:</b>	Confluence Resources	<b>TVD Reference:</b>	RKB=5073+25 @ 5098.00ft
<b>Project:</b>	Weld County, Colorado	<b>MD Reference:</b>	RKB=5073+25 @ 5098.00ft
<b>Site:</b>	Section 33-T01N-R65W	<b>North Reference:</b>	True
<b>Well:</b>	Walla 5-2-2L	<b>Survey Calculation Method:</b>	Minimum Curvature
<b>Wellbore:</b>	Original Hole		
<b>Design:</b>	plan1		

<b>Project</b>	Weld County, Colorado		
<b>Map System:</b>	Universal Transverse Mercator (US Survey Feet)	<b>System Datum:</b>	Mean Sea Level
<b>Geo Datum:</b>	NAD83 Colorado - HARN		
<b>Map Zone:</b>	Zone 13N (108 W to 102 W)		

Site		Section 33-T01N-R65W			
Site Position:		Northing:	14,527,751.12 usft	Latitude:	40.00234552
From:	Map	Easting:	1,730,774.27 usft	Longitude:	-104.67734224
Position Uncertainty:	0.00 ft	Slot Radius:	13-3/16 "	Grid Convergence:	0.21 °

Well	Walla 5-2-2L, Surf loc: 710 FSL 300 FWL Sec33-T01N-R65W					
Well Position	+N/-S	0.00 ft	Northing:	14,527,801.12 usft	Latitude:	40.00248283
	+E/-W	0.00 ft	Easting:	1,730,773.84 usft	Longitude:	-104.67734313
Position Uncertainty		0.00 ft	Wellhead Elevation:		Ground Level:	5,073.00 ft

<b>Wellbore</b>	Original Hole				
<b>Magnetics</b>	<b>Model Name</b>	<b>Sample Date</b>	<b>Declination (°)</b>	<b>Dip Angle (°)</b>	<b>Field Strength (nT)</b>
	HDGM	5/18/2017	8.28	66.45	52,148.40000000

<b>Design</b>	plan1			
<b>Audit Notes:</b>				
<b>Version:</b>	<b>Phase:</b>	PLAN	<b>Tie On Depth:</b>	0.00
<b>Vertical Section:</b>	<b>Depth From (TVD) (ft)</b>	<b>+N/-S (ft)</b>	<b>+E/-W (ft)</b>	<b>Direction (°)</b>
	0.00	0.00	0.00	185.08

<b>Plan Survey Tool Program</b>	<b>Date</b>	5/18/2017		
<b>Depth From (ft)</b>	<b>Depth To (ft)</b>	<b>Survey (Wellbore)</b>	<b>Tool Name</b>	<b>Remarks</b>
1	0.00	17,202.66 plan1 (Original Hole)		

<b>Plan Sections</b>										
<b>Measured Depth (ft)</b>	<b>Inclination (°)</b>	<b>Azimuth (°)</b>	<b>Vertical Depth (ft)</b>	<b>+N/-S (ft)</b>	<b>+E/-W (ft)</b>	<b>Dogleg Rate (°/100ft)</b>	<b>Build Rate (°/100ft)</b>	<b>Turn Rate (°/100ft)</b>	<b>TFO (°)</b>	<b>Target</b>
0.00	0.00	0.00	0.00	0.00	0.00	0.00	0.00	0.00	0.00	
5,000.00	0.00	0.00	5,000.00	0.00	0.00	0.00	0.00	0.00	0.00	
5,293.28	29.33	229.98	5,280.64	-47.22	-56.24	10.00	10.00	0.00	229.98	
7,166.45	29.33	229.98	6,913.72	-637.19	-758.92	0.00	0.00	0.00	0.00	
7,882.07	89.96	180.12	7,274.00	-1,180.19	-914.66	10.00	8.47	-6.97	-53.70	LP Walla 5-2-2L 470 F
17,202.66	89.96	180.12	7,280.00	-10,500.75	-933.50	0.00	0.00	0.00	0.00	BHL Walla 5-2-2L 470



<b>Database:</b>	DB_Jul2216dt_v14	<b>Local Co-ordinate Reference:</b>	Well Walla 5-2-2L
<b>Company:</b>	Confluence Resources	<b>TVD Reference:</b>	RKB=5073+25 @ 5098.00ft
<b>Project:</b>	Weld County, Colorado	<b>MD Reference:</b>	RKB=5073+25 @ 5098.00ft
<b>Site:</b>	Section 33-T01N-R65W	<b>North Reference:</b>	True
<b>Well:</b>	Walla 5-2-2L	<b>Survey Calculation Method:</b>	Minimum Curvature
<b>Wellbore:</b>	Original Hole		
<b>Design:</b>	plan1		

Planned Survey									
Measured Depth (ft)	Inclination (°)	Azimuth (°)	Vertical Depth (ft)	+N/-S (ft)	+E/-W (ft)	Map Northing (usft)	Map Easting (usft)	Latitude	Longitude
0.00	0.00	0.00	0.00	0.00	0.00	14,527,801.12	1,730,773.84	40.00248283	-104.67734313
100.00	0.00	0.00	100.00	0.00	0.00	14,527,801.12	1,730,773.84	40.00248283	-104.67734313
200.00	0.00	0.00	200.00	0.00	0.00	14,527,801.12	1,730,773.84	40.00248283	-104.67734313
300.00	0.00	0.00	300.00	0.00	0.00	14,527,801.12	1,730,773.84	40.00248283	-104.67734313
400.00	0.00	0.00	400.00	0.00	0.00	14,527,801.12	1,730,773.84	40.00248283	-104.67734313
500.00	0.00	0.00	500.00	0.00	0.00	14,527,801.12	1,730,773.84	40.00248283	-104.67734313
600.00	0.00	0.00	600.00	0.00	0.00	14,527,801.12	1,730,773.84	40.00248283	-104.67734313
700.00	0.00	0.00	700.00	0.00	0.00	14,527,801.12	1,730,773.84	40.00248283	-104.67734313
800.00	0.00	0.00	800.00	0.00	0.00	14,527,801.12	1,730,773.84	40.00248283	-104.67734313
900.00	0.00	0.00	900.00	0.00	0.00	14,527,801.12	1,730,773.84	40.00248283	-104.67734313
1,000.00	0.00	0.00	1,000.00	0.00	0.00	14,527,801.12	1,730,773.84	40.00248283	-104.67734313
1,100.00	0.00	0.00	1,100.00	0.00	0.00	14,527,801.12	1,730,773.84	40.00248283	-104.67734313
1,200.00	0.00	0.00	1,200.00	0.00	0.00	14,527,801.12	1,730,773.84	40.00248283	-104.67734313
1,300.00	0.00	0.00	1,300.00	0.00	0.00	14,527,801.12	1,730,773.84	40.00248283	-104.67734313
1,400.00	0.00	0.00	1,400.00	0.00	0.00	14,527,801.12	1,730,773.84	40.00248283	-104.67734313
1,500.00	0.00	0.00	1,500.00	0.00	0.00	14,527,801.12	1,730,773.84	40.00248283	-104.67734313
1,600.00	0.00	0.00	1,600.00	0.00	0.00	14,527,801.12	1,730,773.84	40.00248283	-104.67734313
1,700.00	0.00	0.00	1,700.00	0.00	0.00	14,527,801.12	1,730,773.84	40.00248283	-104.67734313
1,800.00	0.00	0.00	1,800.00	0.00	0.00	14,527,801.12	1,730,773.84	40.00248283	-104.67734313
1,900.00	0.00	0.00	1,900.00	0.00	0.00	14,527,801.12	1,730,773.84	40.00248283	-104.67734313
2,000.00	0.00	0.00	2,000.00	0.00	0.00	14,527,801.12	1,730,773.84	40.00248283	-104.67734313
2,100.00	0.00	0.00	2,100.00	0.00	0.00	14,527,801.12	1,730,773.84	40.00248283	-104.67734313
2,200.00	0.00	0.00	2,200.00	0.00	0.00	14,527,801.12	1,730,773.84	40.00248283	-104.67734313
2,300.00	0.00	0.00	2,300.00	0.00	0.00	14,527,801.12	1,730,773.84	40.00248283	-104.67734313
2,400.00	0.00	0.00	2,400.00	0.00	0.00	14,527,801.12	1,730,773.84	40.00248283	-104.67734313
2,500.01	0.00	0.00	2,500.01	0.00	0.00	14,527,801.12	1,730,773.84	40.00248283	-104.67734313
2,600.01	0.00	0.00	2,600.01	0.00	0.00	14,527,801.12	1,730,773.84	40.00248283	-104.67734313
2,700.01	0.00	0.00	2,700.01	0.00	0.00	14,527,801.12	1,730,773.84	40.00248283	-104.67734313
2,800.01	0.00	0.00	2,800.01	0.00	0.00	14,527,801.12	1,730,773.84	40.00248283	-104.67734313
2,900.01	0.00	0.00	2,900.01	0.00	0.00	14,527,801.12	1,730,773.84	40.00248283	-104.67734313
3,000.01	0.00	0.00	3,000.01	0.00	0.00	14,527,801.12	1,730,773.84	40.00248283	-104.67734313
3,100.01	0.00	0.00	3,100.01	0.00	0.00	14,527,801.12	1,730,773.84	40.00248283	-104.67734313
3,200.01	0.00	0.00	3,200.01	0.00	0.00	14,527,801.12	1,730,773.84	40.00248283	-104.67734313
3,300.01	0.00	0.00	3,300.01	0.00	0.00	14,527,801.12	1,730,773.84	40.00248283	-104.67734313
3,400.01	0.00	0.00	3,400.01	0.00	0.00	14,527,801.12	1,730,773.84	40.00248283	-104.67734313
3,500.01	0.00	0.00	3,500.01	0.00	0.00	14,527,801.12	1,730,773.84	40.00248283	-104.67734313
3,600.01	0.00	0.00	3,600.01	0.00	0.00	14,527,801.12	1,730,773.84	40.00248283	-104.67734313
3,700.01	0.00	0.00	3,700.01	0.00	0.00	14,527,801.12	1,730,773.84	40.00248283	-104.67734313
3,800.01	0.00	0.00	3,800.01	0.00	0.00	14,527,801.12	1,730,773.84	40.00248283	-104.67734313
3,900.01	0.00	0.00	3,900.01	0.00	0.00	14,527,801.12	1,730,773.84	40.00248283	-104.67734313
4,000.01	0.00	0.00	4,000.01	0.00	0.00	14,527,801.12	1,730,773.84	40.00248283	-104.67734313
4,100.01	0.00	0.00	4,100.01	0.00	0.00	14,527,801.12	1,730,773.84	40.00248283	-104.67734313
4,200.01	0.00	0.00	4,200.01	0.00	0.00	14,527,801.12	1,730,773.84	40.00248283	-104.67734313
4,300.01	0.00	0.00	4,300.01	0.00	0.00	14,527,801.12	1,730,773.84	40.00248283	-104.67734313
4,400.01	0.00	0.00	4,400.01	0.00	0.00	14,527,801.12	1,730,773.84	40.00248283	-104.67734313
4,500.01	0.00	0.00	4,500.01	0.00	0.00	14,527,801.12	1,730,773.84	40.00248283	-104.67734313
4,600.01	0.00	0.00	4,600.01	0.00	0.00	14,527,801.12	1,730,773.84	40.00248283	-104.67734313
4,700.01	0.00	0.00	4,700.01	0.00	0.00	14,527,801.12	1,730,773.84	40.00248283	-104.67734313
4,800.01	0.00	0.00	4,800.01	0.00	0.00	14,527,801.12	1,730,773.84	40.00248283	-104.67734313
4,900.01	0.00	0.00	4,900.01	0.00	0.00	14,527,801.12	1,730,773.84	40.00248283	-104.67734313
5,000.00	0.00	0.00	5,000.00	0.00	0.00	14,527,801.12	1,730,773.84	40.00248283	-104.67734313
KOP Begin 10°/100' build									
5,000.01	0.00	229.98	5,000.01	0.00	0.00	14,527,801.12	1,730,773.84	40.00248283	-104.67734313
5,100.01	10.00	229.98	5,099.50	-5.60	-6.67	14,527,795.50	1,730,767.19	40.00246746	-104.67736694



<b>Database:</b>	DB_Jul2216dt_v14	<b>Local Co-ordinate Reference:</b>	Well Walla 5-2-2L
<b>Company:</b>	Confluence Resources	<b>TVD Reference:</b>	RKB=5073+25 @ 5098.00ft
<b>Project:</b>	Weld County, Colorado	<b>MD Reference:</b>	RKB=5073+25 @ 5098.00ft
<b>Site:</b>	Section 33-T01N-R65W	<b>North Reference:</b>	True
<b>Well:</b>	Walla 5-2-2L	<b>Survey Calculation Method:</b>	Minimum Curvature
<b>Wellbore:</b>	Original Hole		
<b>Design:</b>	plan1		

Planned Survey									
Measured Depth (ft)	Inclination (°)	Azimuth (°)	Vertical Depth (ft)	+N/-S (ft)	+E/-W (ft)	Map Northing (usft)	Map Easting (usft)	Latitude	Longitude
5,200.01	20.00	229.98	5,195.97	-22.22	-26.47	14,527,778.81	1,730,747.45	40.00242181	-104.67743763
5,293.28	29.33	229.98	5,280.64	-47.22	-56.24	14,527,753.70	1,730,717.77	40.00235315	-104.67754396
<b>Begin 29.33° tangent</b>									
5,300.01	29.33	229.98	5,286.51	-49.34	-58.77	14,527,751.57	1,730,715.25	40.00234733	-104.67755297
5,400.01	29.33	229.98	5,373.69	-80.84	-96.28	14,527,719.94	1,730,677.85	40.00226084	-104.67768692
5,500.01	29.33	229.98	5,460.87	-112.33	-133.79	14,527,688.31	1,730,640.45	40.00217435	-104.67782088
5,600.01	29.33	229.98	5,548.06	-143.83	-171.30	14,527,656.68	1,730,603.06	40.00208786	-104.67795483
5,700.01	29.33	229.98	5,635.24	-175.32	-208.82	14,527,625.05	1,730,565.66	40.00200136	-104.67808878
5,800.01	29.33	229.98	5,722.42	-206.82	-246.33	14,527,593.42	1,730,528.26	40.00191487	-104.67822273
5,900.01	29.33	229.98	5,809.60	-238.31	-283.84	14,527,561.78	1,730,490.86	40.00182838	-104.67835668
6,000.01	29.33	229.98	5,896.79	-269.81	-321.36	14,527,530.15	1,730,453.46	40.00174188	-104.67849063
6,100.01	29.33	229.98	5,983.97	-301.31	-358.87	14,527,498.52	1,730,416.06	40.00165539	-104.67862458
6,200.01	29.33	229.98	6,071.15	-332.80	-396.38	14,527,466.89	1,730,378.67	40.00156889	-104.67875853
6,300.01	29.33	229.98	6,158.34	-364.30	-433.89	14,527,435.26	1,730,341.27	40.00148240	-104.67889248
6,400.01	29.33	229.98	6,245.52	-395.79	-471.41	14,527,403.63	1,730,303.87	40.00139591	-104.67902643
6,500.01	29.33	229.98	6,332.70	-427.29	-508.92	14,527,372.00	1,730,266.47	40.00130941	-104.67916038
6,600.01	29.33	229.98	6,419.88	-458.78	-546.43	14,527,340.37	1,730,229.07	40.00122292	-104.67929433
6,700.01	29.33	229.98	6,507.07	-490.28	-583.95	14,527,308.73	1,730,191.67	40.00113642	-104.67942828
6,800.01	29.33	229.98	6,594.25	-521.78	-621.46	14,527,277.10	1,730,154.27	40.00104993	-104.67956223
6,900.01	29.33	229.98	6,681.43	-553.27	-658.97	14,527,245.47	1,730,116.88	40.00096343	-104.67969617
7,000.01	29.33	229.98	6,768.62	-584.77	-696.48	14,527,213.84	1,730,079.48	40.00087694	-104.67983012
7,100.01	29.33	229.98	6,855.80	-616.26	-734.00	14,527,182.21	1,730,042.08	40.00079044	-104.67996407
7,166.45	29.33	229.98	6,913.72	-637.19	-758.92	14,527,161.19	1,730,017.23	40.00073298	-104.68005306
<b>Begin 10°/100' build/turn</b>									
7,200.01	31.42	224.79	6,942.68	-648.69	-771.38	14,527,149.65	1,730,004.81	40.00070140	-104.68009756
7,300.01	38.62	212.63	7,024.62	-693.58	-806.67	14,527,104.63	1,729,969.69	40.00057810	-104.68022354
7,400.01	46.73	203.96	7,098.14	-753.29	-838.36	14,527,044.81	1,729,938.22	40.00041413	-104.68033670
7,500.02	55.33	197.38	7,161.01	-825.99	-865.50	14,526,972.01	1,729,911.34	40.00021448	-104.68043359
7,600.02	64.22	192.07	7,211.32	-909.48	-887.26	14,526,888.44	1,729,889.88	39.99998520	-104.68051128
7,700.02	73.28	187.52	7,247.53	-1,001.22	-902.98	14,526,796.64	1,729,874.49	39.99973327	-104.68056740
7,800.02	82.43	183.37	7,268.56	-1,098.42	-912.18	14,526,699.41	1,729,865.64	39.99946634	-104.68060025
7,882.07	89.96	180.12	7,274.00	-1,180.19	-914.66	14,526,617.63	1,729,863.46	39.99924179	-104.68060910
<b>LP Begin 89.96° lateral section</b>									
7,900.02	89.96	180.12	7,274.01	-1,198.13	-914.70	14,526,599.69	1,729,863.49	39.99919252	-104.68060923
8,000.02	89.96	180.12	7,274.08	-1,298.13	-914.90	14,526,499.69	1,729,863.65	39.99891790	-104.68060994
8,100.02	89.96	180.12	7,274.14	-1,398.13	-915.10	14,526,399.69	1,729,863.81	39.99864329	-104.68061065
8,200.02	89.96	180.12	7,274.20	-1,498.13	-915.30	14,526,299.69	1,729,863.97	39.99836867	-104.68061135
8,300.02	89.96	180.12	7,274.27	-1,598.13	-915.51	14,526,199.69	1,729,864.13	39.99809405	-104.68061206
8,400.02	89.96	180.12	7,274.33	-1,698.13	-915.71	14,526,099.69	1,729,864.29	39.99781944	-104.68061277
8,500.02	89.96	180.12	7,274.40	-1,798.13	-915.91	14,525,999.69	1,729,864.45	39.99754482	-104.68061348
8,600.02	89.96	180.12	7,274.46	-1,898.13	-916.11	14,525,899.69	1,729,864.61	39.99727020	-104.68061419
8,700.02	89.96	180.12	7,274.53	-1,998.13	-916.31	14,525,799.69	1,729,864.77	39.99699559	-104.68061490
8,800.02	89.96	180.12	7,274.59	-2,098.13	-916.52	14,525,699.69	1,729,864.93	39.99672097	-104.68061561
8,900.02	89.96	180.12	7,274.66	-2,198.13	-916.72	14,525,599.69	1,729,865.09	39.99644635	-104.68061631
9,000.02	89.96	180.12	7,274.72	-2,298.13	-916.92	14,525,499.69	1,729,865.25	39.99617174	-104.68061702
9,100.02	89.96	180.12	7,274.78	-2,398.13	-917.12	14,525,399.69	1,729,865.41	39.99589712	-104.68061773
9,200.02	89.96	180.12	7,274.85	-2,498.13	-917.32	14,525,299.69	1,729,865.57	39.99562251	-104.68061844
9,300.02	89.96	180.12	7,274.91	-2,598.13	-917.53	14,525,199.69	1,729,865.73	39.99534789	-104.68061915
9,400.02	89.96	180.12	7,274.98	-2,698.13	-917.73	14,525,099.69	1,729,865.89	39.99507327	-104.68061986
9,500.02	89.96	180.12	7,275.04	-2,798.13	-917.93	14,524,999.69	1,729,866.05	39.99479866	-104.68062056
9,600.02	89.96	180.12	7,275.11	-2,898.13	-918.13	14,524,899.69	1,729,866.20	39.99452404	-104.68062127
9,700.02	89.96	180.12	7,275.17	-2,998.13	-918.34	14,524,799.69	1,729,866.36	39.99424942	-104.68062198
9,800.02	89.96	180.12	7,275.23	-3,098.13	-918.54	14,524,699.69	1,729,866.52	39.99397481	-104.68062269
9,900.02	89.96	180.12	7,275.30	-3,198.13	-918.74	14,524,599.69	1,729,866.68	39.99370019	-104.68062340

<b>Database:</b>	DB_Jul2216dt_v14	<b>Local Co-ordinate Reference:</b>	Well Walla 5-2-2L
<b>Company:</b>	Confluence Resources	<b>TVD Reference:</b>	RKB=5073+25 @ 5098.00ft
<b>Project:</b>	Weld County, Colorado	<b>MD Reference:</b>	RKB=5073+25 @ 5098.00ft
<b>Site:</b>	Section 33-T01N-R65W	<b>North Reference:</b>	True
<b>Well:</b>	Walla 5-2-2L	<b>Survey Calculation Method:</b>	Minimum Curvature
<b>Wellbore:</b>	Original Hole		
<b>Design:</b>	plan1		

Planned Survey									
Measured Depth (ft)	Inclination (°)	Azimuth (°)	Vertical Depth (ft)	+N/-S (ft)	+E/-W (ft)	Map Northing (usft)	Map Easting (usft)	Latitude	Longitude
10,000.02	89.96	180.12	7,275.36	-3,298.13	-918.94	14,524,499.69	1,729,866.84	39.99342557	-104.68062411
10,100.02	89.96	180.12	7,275.43	-3,398.13	-919.14	14,524,399.69	1,729,867.00	39.99315096	-104.68062481
10,200.02	89.96	180.12	7,275.49	-3,498.13	-919.35	14,524,299.69	1,729,867.16	39.99287634	-104.68062552
10,300.02	89.96	180.12	7,275.56	-3,598.13	-919.55	14,524,199.69	1,729,867.32	39.99260172	-104.68062623
10,400.02	89.96	180.12	7,275.62	-3,698.13	-919.75	14,524,099.70	1,729,867.48	39.99232711	-104.68062694
10,500.02	89.96	180.12	7,275.69	-3,798.13	-919.95	14,523,999.70	1,729,867.64	39.99205249	-104.68062765
10,600.02	89.96	180.12	7,275.75	-3,898.13	-920.16	14,523,899.70	1,729,867.80	39.99177787	-104.68062836
10,700.02	89.96	180.12	7,275.81	-3,998.13	-920.36	14,523,799.70	1,729,867.96	39.99150326	-104.68062906
10,800.02	89.96	180.12	7,275.88	-4,098.13	-920.56	14,523,699.70	1,729,868.12	39.99122864	-104.68062977
10,900.02	89.96	180.12	7,275.94	-4,198.13	-920.76	14,523,599.70	1,729,868.28	39.99095402	-104.68063048
11,000.02	89.96	180.12	7,276.01	-4,298.13	-920.96	14,523,499.70	1,729,868.44	39.99067941	-104.68063119
11,100.02	89.96	180.12	7,276.07	-4,398.13	-921.17	14,523,399.70	1,729,868.60	39.99040479	-104.68063190
11,200.02	89.96	180.12	7,276.14	-4,498.13	-921.37	14,523,299.70	1,729,868.76	39.99013017	-104.68063261
11,300.02	89.96	180.12	7,276.20	-4,598.13	-921.57	14,523,199.70	1,729,868.92	39.98985556	-104.68063331
11,400.02	89.96	180.12	7,276.26	-4,698.13	-921.77	14,523,099.70	1,729,869.08	39.98958094	-104.68063402
11,500.02	89.96	180.12	7,276.33	-4,798.13	-921.97	14,522,999.70	1,729,869.24	39.98930632	-104.68063473
11,600.02	89.96	180.12	7,276.39	-4,898.13	-922.18	14,522,899.70	1,729,869.40	39.98903171	-104.68063544
11,700.02	89.96	180.12	7,276.46	-4,998.13	-922.38	14,522,799.70	1,729,869.56	39.98875709	-104.68063615
11,800.02	89.96	180.12	7,276.52	-5,098.13	-922.58	14,522,699.70	1,729,869.72	39.98848247	-104.68063685
11,900.02	89.96	180.12	7,276.59	-5,198.13	-922.78	14,522,599.70	1,729,869.88	39.98820786	-104.68063756
12,000.02	89.96	180.12	7,276.65	-5,298.13	-922.99	14,522,499.70	1,729,870.04	39.98793324	-104.68063827
12,100.02	89.96	180.12	7,276.72	-5,398.13	-923.19	14,522,399.70	1,729,870.20	39.98765862	-104.68063898
12,200.02	89.96	180.12	7,276.78	-5,498.13	-923.39	14,522,299.70	1,729,870.36	39.98738401	-104.68063969
12,300.02	89.96	180.12	7,276.84	-5,598.13	-923.59	14,522,199.70	1,729,870.52	39.98710939	-104.68064039
12,400.03	89.96	180.12	7,276.91	-5,698.13	-923.79	14,522,099.70	1,729,870.68	39.98683477	-104.68064110
12,500.03	89.96	180.12	7,276.97	-5,798.13	-924.00	14,521,999.70	1,729,870.84	39.98656016	-104.68064181
12,600.03	89.96	180.12	7,277.04	-5,898.13	-924.20	14,521,899.70	1,729,871.00	39.98628554	-104.68064252
12,700.03	89.96	180.12	7,277.10	-5,998.13	-924.40	14,521,799.70	1,729,871.16	39.98601092	-104.68064323
12,800.03	89.96	180.12	7,277.17	-6,098.13	-924.60	14,521,699.70	1,729,871.32	39.98573631	-104.68064393
12,900.03	89.96	180.12	7,277.23	-6,198.13	-924.80	14,521,599.70	1,729,871.48	39.98546169	-104.68064464
13,000.03	89.96	180.12	7,277.29	-6,298.13	-925.01	14,521,499.70	1,729,871.64	39.98518707	-104.68064535
13,100.03	89.96	180.12	7,277.36	-6,398.13	-925.21	14,521,399.70	1,729,871.80	39.98491245	-104.68064606
13,200.03	89.96	180.12	7,277.42	-6,498.13	-925.41	14,521,299.70	1,729,871.96	39.98463784	-104.68064677
13,300.03	89.96	180.12	7,277.49	-6,598.13	-925.61	14,521,199.70	1,729,872.12	39.98436322	-104.68064747
13,400.03	89.96	180.12	7,277.55	-6,698.13	-925.82	14,521,099.70	1,729,872.28	39.98408860	-104.68064818
13,500.03	89.96	180.12	7,277.62	-6,798.13	-926.02	14,520,999.70	1,729,872.44	39.98381399	-104.68064889
13,600.03	89.96	180.12	7,277.68	-6,898.13	-926.22	14,520,899.70	1,729,872.60	39.98353937	-104.68064960
13,700.03	89.96	180.12	7,277.75	-6,998.13	-926.42	14,520,799.70	1,729,872.76	39.98326475	-104.68065031
13,800.03	89.96	180.12	7,277.81	-7,098.13	-926.62	14,520,699.70	1,729,872.92	39.98299014	-104.68065101
13,900.03	89.96	180.12	7,277.87	-7,198.13	-926.83	14,520,599.70	1,729,873.08	39.98271552	-104.68065172
14,000.03	89.96	180.12	7,277.94	-7,298.13	-927.03	14,520,499.70	1,729,873.24	39.98244090	-104.68065243
14,100.03	89.96	180.12	7,278.00	-7,398.13	-927.23	14,520,399.70	1,729,873.40	39.98216628	-104.68065314
14,200.03	89.96	180.12	7,278.07	-7,498.13	-927.43	14,520,299.70	1,729,873.56	39.98189167	-104.68065385
14,300.03	89.96	180.12	7,278.13	-7,598.13	-927.64	14,520,199.70	1,729,873.72	39.98161705	-104.68065455
14,400.03	89.96	180.12	7,278.20	-7,698.13	-927.84	14,520,099.70	1,729,873.88	39.98134243	-104.68065526
14,500.03	89.96	180.12	7,278.26	-7,798.13	-928.04	14,519,999.70	1,729,874.04	39.98106782	-104.68065597
14,600.03	89.96	180.12	7,278.32	-7,898.13	-928.24	14,519,899.70	1,729,874.20	39.98079320	-104.68065668
14,700.03	89.96	180.12	7,278.39	-7,998.13	-928.44	14,519,799.70	1,729,874.36	39.98051858	-104.68065738
14,800.03	89.96	180.12	7,278.45	-8,098.13	-928.65	14,519,699.70	1,729,874.52	39.98024396	-104.68065809
14,900.03	89.96	180.12	7,278.52	-8,198.13	-928.85	14,519,599.70	1,729,874.68	39.97996935	-104.68065880
15,000.03	89.96	180.12	7,278.58	-8,298.13	-929.05	14,519,499.70	1,729,874.84	39.97969473	-104.68065951
15,100.03	89.96	180.12	7,278.65	-8,398.13	-929.25	14,519,399.70	1,729,875.00	39.97942011	-104.68066021
15,200.03	89.96	180.12	7,278.71	-8,498.13	-929.45	14,519,299.70	1,729,875.16	39.97914550	-104.68066092
15,300.03	89.96	180.12	7,278.78	-8,598.13	-929.66	14,519,199.70	1,729,875.32	39.97887088	-104.68066163
15,400.03	89.96	180.12	7,278.84	-8,698.13	-929.86	14,519,099.70	1,729,875.48	39.97859626	-104.68066234

<b>Database:</b>	DB_Jul2216dt_v14	<b>Local Co-ordinate Reference:</b>	Well Walla 5-2-2L
<b>Company:</b>	Confluence Resources	<b>TVD Reference:</b>	RKB=5073+25 @ 5098.00ft
<b>Project:</b>	Weld County, Colorado	<b>MD Reference:</b>	RKB=5073+25 @ 5098.00ft
<b>Site:</b>	Section 33-T01N-R65W	<b>North Reference:</b>	True
<b>Well:</b>	Walla 5-2-2L	<b>Survey Calculation Method:</b>	Minimum Curvature
<b>Wellbore:</b>	Original Hole		
<b>Design:</b>	plan1		

Planned Survey									
Measured Depth (ft)	Inclination (°)	Azimuth (°)	Vertical Depth (ft)	+N/-S (ft)	+E/-W (ft)	Map Northing (usft)	Map Easting (usft)	Latitude	Longitude
15,500.03	89.96	180.12	7,278.90	-8,798.13	-930.06	14,518,999.70	1,729,875.64	39.97832164	-104.68066305
15,600.03	89.96	180.12	7,278.97	-8,898.13	-930.26	14,518,899.70	1,729,875.80	39.97804703	-104.68066375
15,700.03	89.96	180.12	7,279.03	-8,998.13	-930.47	14,518,799.70	1,729,875.96	39.97777241	-104.68066446
15,800.03	89.96	180.12	7,279.10	-9,098.13	-930.67	14,518,699.70	1,729,876.12	39.97749779	-104.68066517
15,900.03	89.96	180.12	7,279.16	-9,198.13	-930.87	14,518,599.70	1,729,876.28	39.97722317	-104.68066588
16,000.03	89.96	180.12	7,279.23	-9,298.13	-931.07	14,518,499.70	1,729,876.44	39.97694856	-104.68066658
16,100.03	89.96	180.12	7,279.29	-9,398.13	-931.27	14,518,399.70	1,729,876.60	39.97667394	-104.68066729
16,200.03	89.96	180.12	7,279.35	-9,498.13	-931.48	14,518,299.70	1,729,876.76	39.97639932	-104.68066800
16,300.03	89.96	180.12	7,279.42	-9,598.13	-931.68	14,518,199.70	1,729,876.92	39.97612471	-104.68066871
16,400.03	89.96	180.12	7,279.48	-9,698.13	-931.88	14,518,099.70	1,729,877.08	39.97585009	-104.68066941
16,500.03	89.96	180.12	7,279.55	-9,798.13	-932.08	14,517,999.70	1,729,877.24	39.97557547	-104.68067012
16,600.03	89.96	180.12	7,279.61	-9,898.13	-932.28	14,517,899.70	1,729,877.40	39.97530085	-104.68067083
16,700.03	89.96	180.12	7,279.68	-9,998.13	-932.49	14,517,799.70	1,729,877.56	39.97502624	-104.68067154
16,800.03	89.96	180.12	7,279.74	-10,098.13	-932.69	14,517,699.70	1,729,877.72	39.97475162	-104.68067224
16,900.03	89.96	180.12	7,279.81	-10,198.13	-932.89	14,517,599.70	1,729,877.87	39.97447700	-104.68067295
17,000.03	89.96	180.12	7,279.87	-10,298.13	-933.09	14,517,499.70	1,729,878.03	39.97420238	-104.68067366
17,100.03	89.96	180.12	7,279.93	-10,398.13	-933.30	14,517,399.70	1,729,878.19	39.97392777	-104.68067437
17,200.03	89.96	180.12	7,280.00	-10,498.13	-933.50	14,517,299.70	1,729,878.35	39.97365315	-104.68067507
17,202.66	89.96	180.12	7,280.00	-10,500.75	-933.50	14,517,297.08	1,729,878.36	39.97364595	-104.68067509
PBHL/TD 17202.65 MD/7280.00 TVD									

Design Targets									
Target Name	Dip Angle (°)	Dip Dir. (°)	TVD (ft)	+N/-S (ft)	+E/-W (ft)	Northing (usft)	Easting (usft)	Latitude	Longitude
- hit/miss target									
- Shape									
LP Walla 5-2-2L 470 FNI	0.00	0.00	7,274.00	-1,180.19	-914.66	14,526,617.63	1,729,863.46	39.99924179	-104.68060910
- plan hits target center									
- Point									
BHL Walla 5-2-2L 470 F'	0.00	0.00	7,280.00	-10,500.75	-933.50	14,517,297.08	1,729,878.36	39.97364595	-104.68067509
- plan hits target center									
- Point									

Plan Annotations				
Measured Depth (ft)	Vertical Depth (ft)	Local Coordinates		Comment
		+N/-S (ft)	+E/-W (ft)	
5,000.00	5,000.00	0.00	0.00	KOP Begin 10°/100' build
5,293.28	5,280.64	-47.22	-56.24	Begin 29.33° tangent
7,166.45	6,913.72	-637.19	-758.92	Begin 10°/100' build/turn
7,882.07	7,274.00	-1,180.19	-914.66	LP Begin 89.96° lateral section
17,202.66	7,280.00	-10,500.75	-933.50	PBHL/TD 17202.65 MD/7280.00 TVD