



photo 1: Beginning of transect facing north at the location (disturbed).



photo 2: End of transect facing south at the location (disturbed).

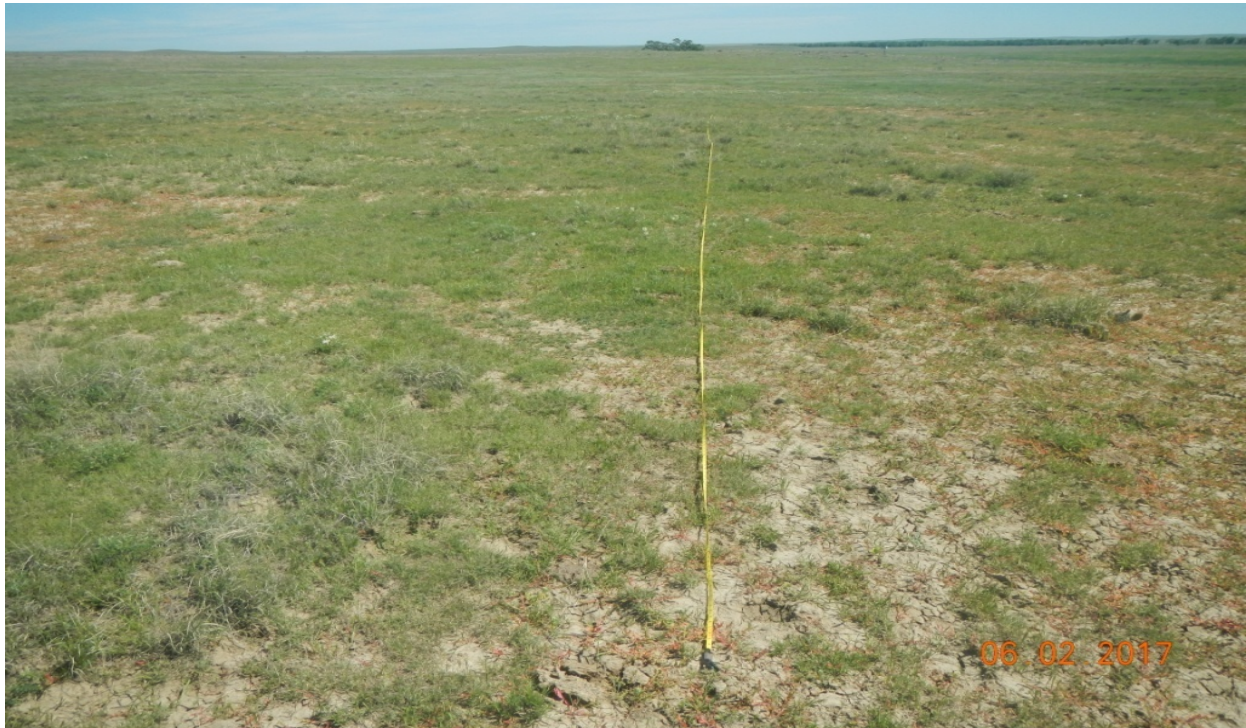


photo 3: Beginning of transect facing northeast at the reference area.



photo 4: End of transect facing southwest at the reference area.

Cover Data

Date: 6/2/17 Inspected By: Ryan Costa

Location/Operator: API # 073-06212 Newfield Production

Transect #/disturbed/Ref	Disturbed		Reference					
Transect Orientation and first photo, degrees	38.99930 -103.36080	N	38.99946 -103.36172	NE				
Photo Midpoint (2)	W, E							
End transect	38.99959 -103.36080	S	38.99971 -103.36158	SW				
Photo other								
Aspect/Slope	Flat		Flat					
	Totals		Totals		Totals		Totals	
Cryptogams (eg. Moss, lichen)								
Litter	47		53					
Bare Soil	20		18					
Rock								
Total Weeds	8		-					
Total Desirable Species	25		29					
80% Check	25/29 = 86%							
	1st Hit	2nd/P	1st Hit	2nd/P	1st Hit	2nd/P	1st Hit	2nd/P
Brown Blackgrass		2		8				
White Hairy goldaster		3		2				
Spiky Sand daisy		2		3				
Dis spi. Inland saltgrass		7	P					
Art sp. Puffball grass		1	P					
Buc dac Buffalo grass		8	E	7				
Spr weeds forage		2	1	5				
Yellow allyssum		5	P					
Kochia		3						
Stellaria		3	P					
Astragalus sp. Leafwood	P			1				
Sp. scarlet globe	P			2				
Yucca	P			1				
Prickly pear cactus			P					
Sp. Shrub			P					
Wing/y Plantain	P		P					
Mel sp. Yellow clover	P							

2nd= second hit; P= plant species present but not hit