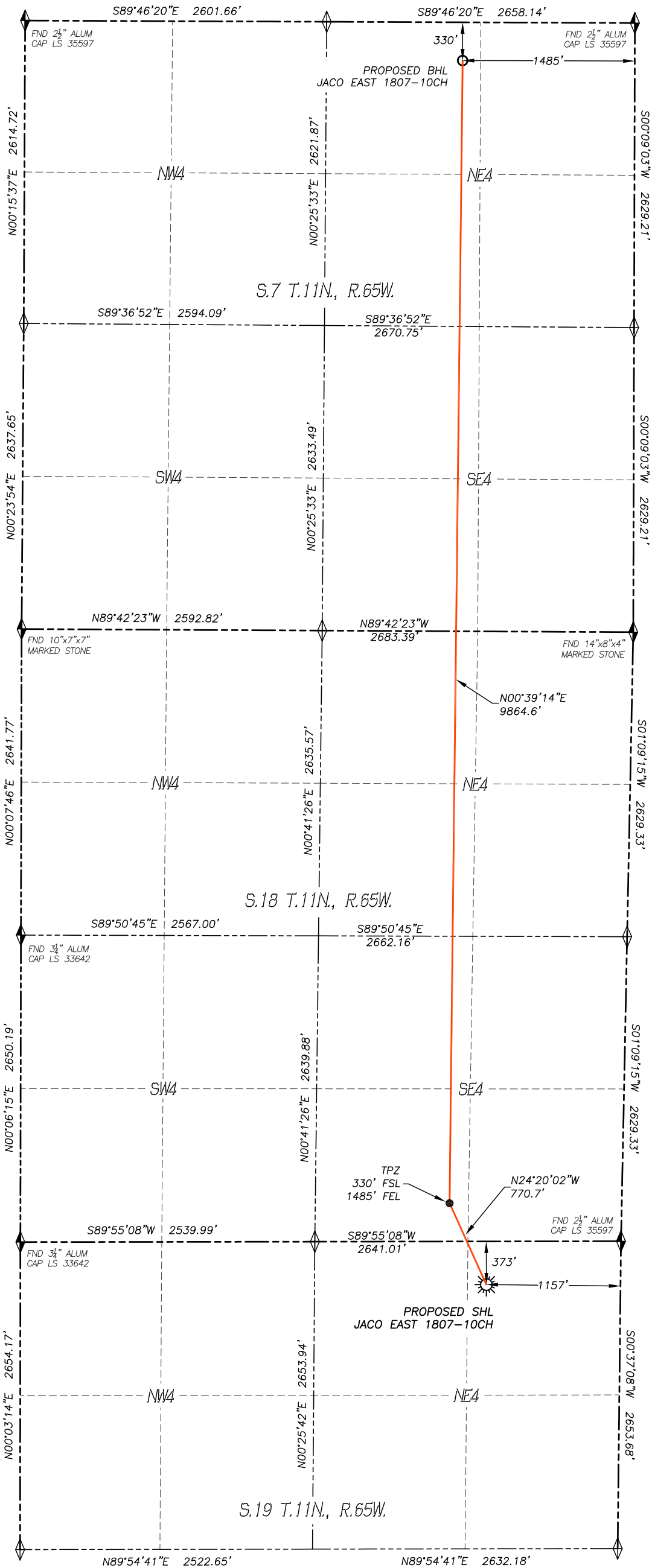


WELL LOCATION CERTIFICATE  
JACO EAST 1807-10CH

SECTION 19, TOWNSHIP 11 NORTH, RANGE 65 WEST  
OF THE 6TH P.M., WELD COUNTY



IN ACCORDANCE WITH A REQUEST FROM LONGS PEAK RESOURCES, LLC., DALEY LAND SURVEYING, INC. HAS DETERMINED THE SURFACE LOCATION OF THE JACO EAST 1807-10CH WELL TO BE 373' FNL, 1157' FEL, AS MEASURED AT NINETY (90) DEGREES FROM THE SECTION LINES OF SECTION 19, TOWNSHIP 11 NORTH, RANGE 65 WEST, AND THE BOTTOM HOLE LOCATION TO BE 330' FNL, 1485' FEL, AS MEASURED AT NINETY (90) DEGREES FROM THE SECTION LINES OF SECTION 7, TOWNSHIP 11 NORTH, RANGE 65 WEST, OF THE 6TH PRINCIPAL MERIDIAN, WELD COUNTY, COLORADO.

I HEREBY STATE THAT THIS WELL LOCATION CERTIFICATE WAS PREPARED BY ME OR UNDER MY DIRECT SUPERVISION, THAT THE WORK WAS COMPLETED ON 1/26/2017 FOR AND ON BEHALF OF LONGS PEAK RESOURCES, LLC., AND THAT THIS MAP DOES NOT REPRESENT A BOUNDARY SURVEY, IT IS NOT A LAND SURVEY PLAT OR AN IMPROVEMENT SURVEY PLAT AND IT IS NOT TO BE RELIED UPON FOR THE ESTABLISHMENT OF FENCE, BUILDING OR OTHER FUTURE IMPROVEMENT LINES.

NOTES:

- BEARINGS FOR THIS MAP ARE ASSUMED AND BASED UPON GPS OBSERVATIONS MADE BETWEEN MONUMENTS LOCATED AT THE WEST QUARTER CORNER AND THE SOUTHWEST CORNER OF SECTION 18, T.11N., R.65W.
- HORIZONTAL DATUM IS NAD83.
- VERTICAL DATUM IS NAVD88 AND ORIGINATES FROM THE LOCAL C.O.R.S. NETWORK, UTILIZING THE GEOID12A MODEL.
- SEE LOCATION DRAWING FOR VISIBLE IMPROVEMENTS WITHIN 500' OF PROPOSED DISTURBED AREA.
- SURFACE USE: RANGELAND.
- INST. OPERATOR: KYLE DALEY



NEAREST CULTURAL ITEMS:

BUILDING: 3742'± NW  
BUILDING UNIT: 3935'± NW  
HIGH OCC. BLD. UNIT: 5280'+  
DES. OUTSIDE ACTIVITY AREA: 5280'+  
PUBLIC ROAD: 4009'± W  
ABOVE GROUND UTILITY: 1478'± NW  
RAILROAD: 5280'+  
PROPERTY LINE: 373'± N

NAD 83 LATITUDE AND LONGITUDE

SURFACE LOCATION:

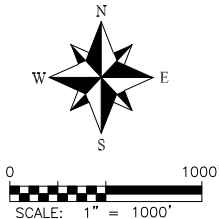
LATITUDE: N40.91258°  
LONGITUDE: W104.70028°  
ELEV: 5598'  
PDOP: 1.4  
QTR/QTR: NE4/NE4

LANDING POINT/TPZ:

LATITUDE: N40.91451°  
LONGITUDE: W104.70143°  
BOTTOM HOLE:  
LATITUDE: N40.94158°  
LONGITUDE: W104.70103°

LEGEND

- FOUND MONUMENT
- CALCULATED POSITION
- PROPOSED WELL
- BOTTOM HOLE
- ABANDONED WELL
- EXISTING WELL
- TPZ TOP PRODUCING ZONE



DALEY LAND  
SURVEYING, INC.  
970.302.4159