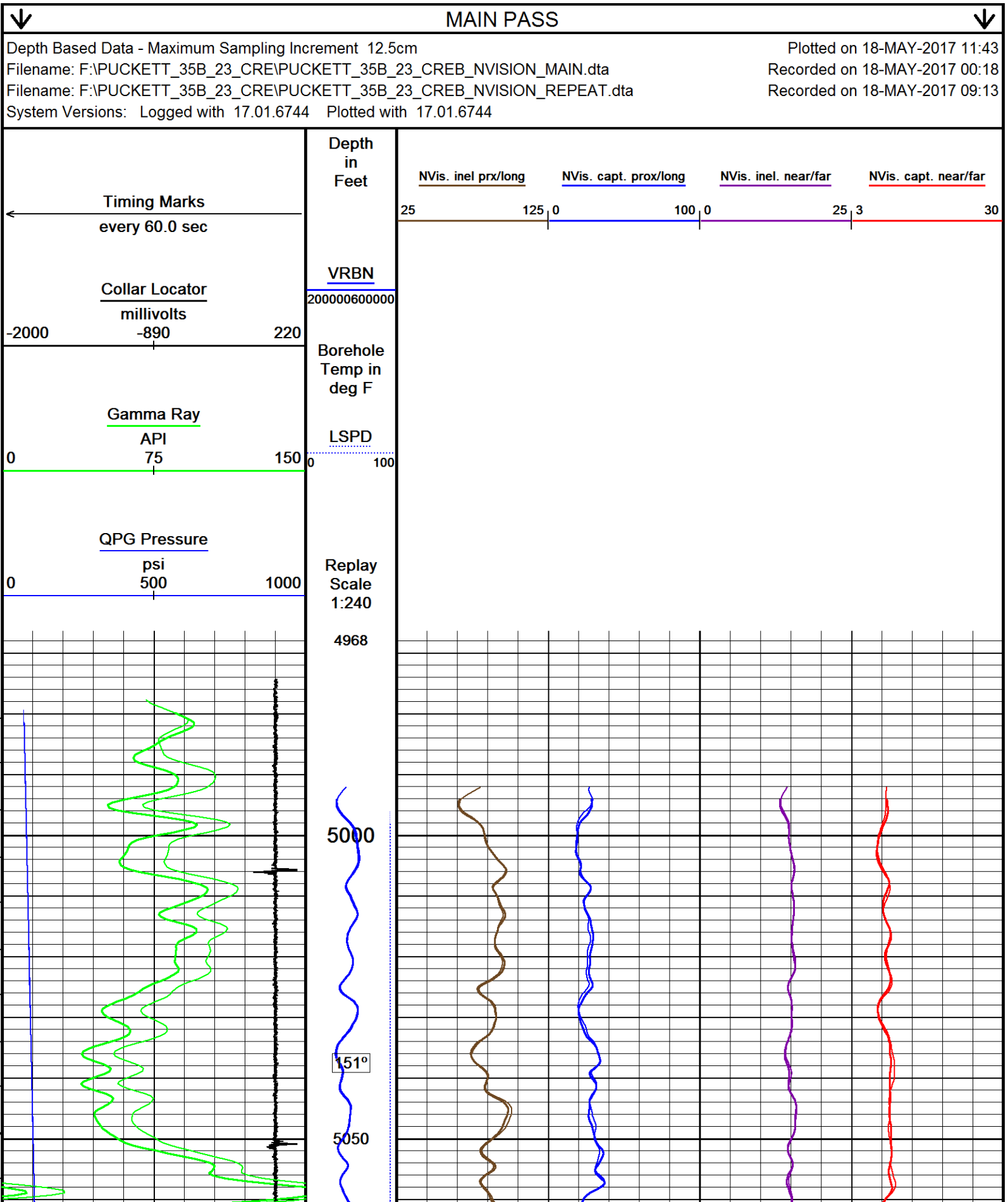
 Weatherford®				RAPTOR NVISION LOG							
COMPANY WELL FIELD PROVINCE/COUNTY COUNTRY/STATE LOCATION				CAERUS OIL & GAS PUCKETT 35B-23 GRAND VALLEY GARFIELD USA / COLORADO							
SEC 23		TWP 06S	RGE 97W	Other Services SBT							
Latitude											
Longitude											
API Number											
Permanent Datum GROUND LEVEL, Elevation 8396 feet				Elevations: KB 8426.00							
Log Measured From KB, 30.00 feet above Permanent Datum				DF 8426.00							
Drilling Measured From KB				GL 8396.00							
Date		18-MAY-2017		PERFORATION RECORD							
Run Number		ONE		Shot		Number		Depth From		Depth To	
Service Order		182318638		Density		of Shots		feet		feet	
Type Log		CREB									
Depth Driller		9068.00									
Depth Logger		8991.00									
Top Log Interval		5000.00									
Bottom Log Interval		8991.00									
Hole Fluid Type		WATER									
Hole Fluid Level		0.00									
Restriction ID		3.875									
Max Recorded Temp		236.00									
Well Head Pressure		0.00									
Well Head Equipment		N/A									
Time Well Ready		ROA		Size		Weight		Depth From		Depth To	
Time Logger Bottom		0000		inches		pounds/ft		feet		feet	
Unit		14333		4.500		11.60		0.00		8976.00	
Equipment Name		WSS-E									
Base		CASPER									
Recorded By		P. MAZUR									
Witnessed By		NOT WITNESSED									

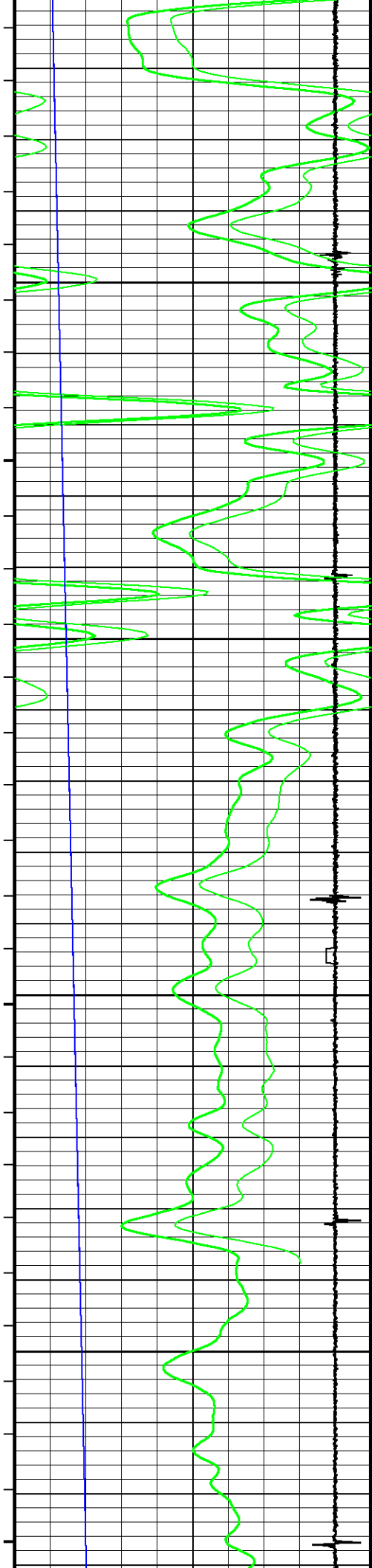
CASING / TUBING RECORD						
Type	Grade	TypeJoint	Size inches	Depth From feet	Shoe Depth feet	Weight pounds/ft
			4.500	0.00	8976.00	11.60

REMARKS
SOFTWARE VERSION 17.01.6744 - DEVELOPMENT BUILD VERSION
ALL DEPTH CONTROL PROCEDURES FOR SUBSEQUENT RUN IN HOLE WERE FOLLOWED. LOG RUN FROM 30' K.B.
SURFACE SYSTEM USED: WCM-D 307
TOOLS RUN: WCCC, UGRK, QPGE, TMPN, CRPB, CRMB, UGRK WERE RAN IN COMBINATION
GAMMA RAY COUNTS ON SUBSEQUENT PASSES ARE AFFECTED BY RESIDUAL NEUTRON ACTIVATION CAUSED BY THE PREVIOUS PASS
BOTTOM HOLE TEMPERATURE WAS DEG. 236F

In interpreting, communicating or providing information and/or making recommendations, either written or oral, as to logs or test or other data, type or amount of material, or Work or other service to be furnished, or manner of performance, or in predicting results to be obtained, the Contractor will give the Company the benefit of the Contractor's best judgment based on its experience and will perform all such Work in a good and workmanlike manner. Any interpretation of test or other data, and any recommendation or reservoir description based upon such interpretations, are opinions based upon inferences from measurements and empirical relationships and assumptions, which inferences and assumptions are not infallible, and with respect to which professional engineers and analysts may differ. ACCORDINGLY ANY INTERPRETATION OR RECOMMENDATION RESULTING FROM THE SERVICES WILL BE AT THE SOLE RISK OF THE COMPANY, AND THE CONTRACTOR CANNOT AND DOES NOT WARRANT THE ACCURACY, CORRECTNESS OR COMPLETENESS OF ANY SUCH

INTERPRETATION OR RECOMMENDATION, WHICH INTERPRETATIONS AND RECOMMENDATIONS SHOULD NOT, THEREFORE, UNDER ANY CIRCUMSTANCES BE RELIED UPON AS THE SOLE OR MAIN BASIS FOR ANY DRILLING, COMPLETION, WELL TREATMENT, PRODUCTION OR FINANCIAL DECISION, OR ANY PROCEDURE INVOLVING ANY RISK TO THE SAFETY OF ANY DRILLING ACTIVITY, DRILLING RIG OR ITS CREW OR ANY OTHER INDIVIDUAL. THE COMPANY HAS FULL RESPONSIBILITY FOR ALL DECISIONS CONCERNING THE SERVICES.





154°

5100

156°

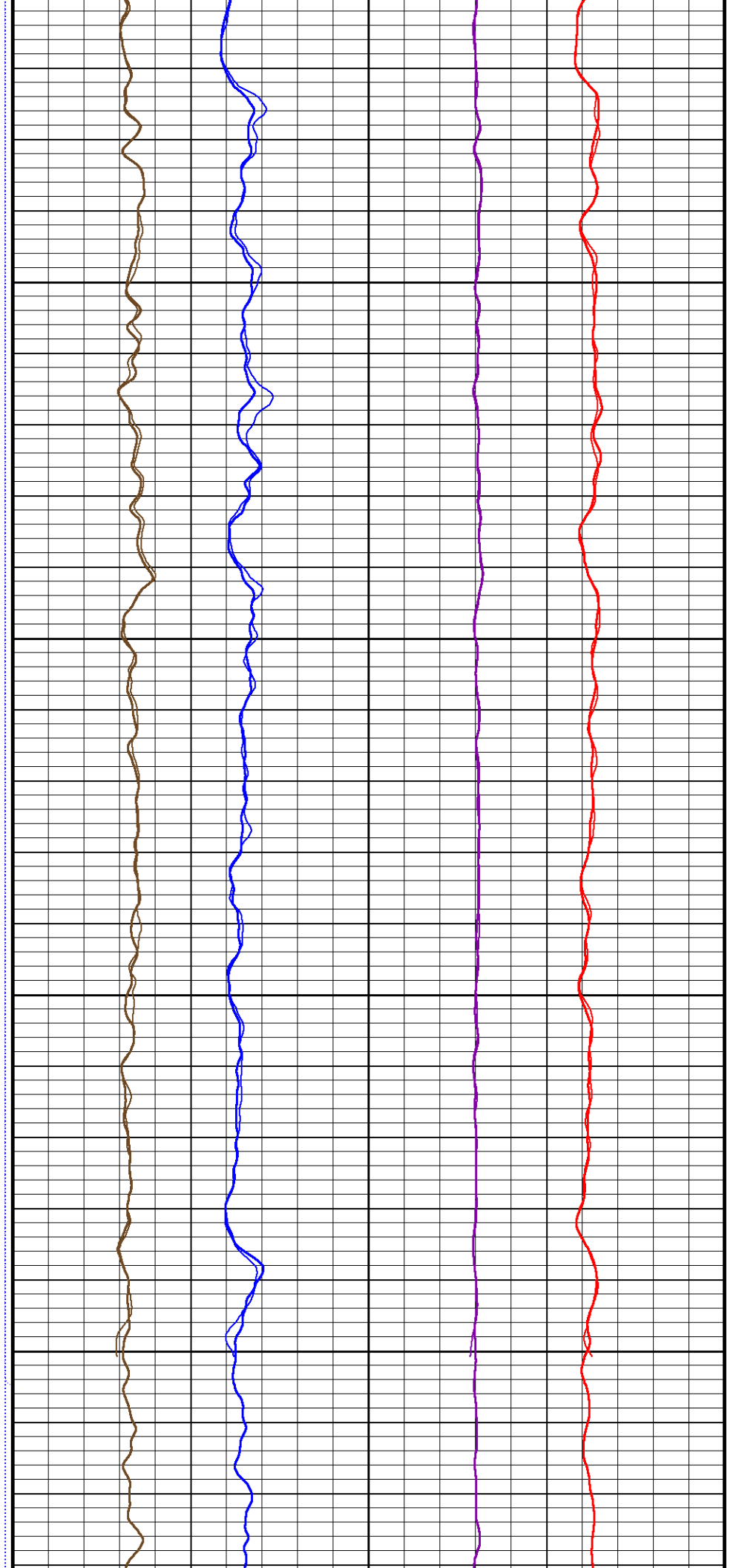
5150

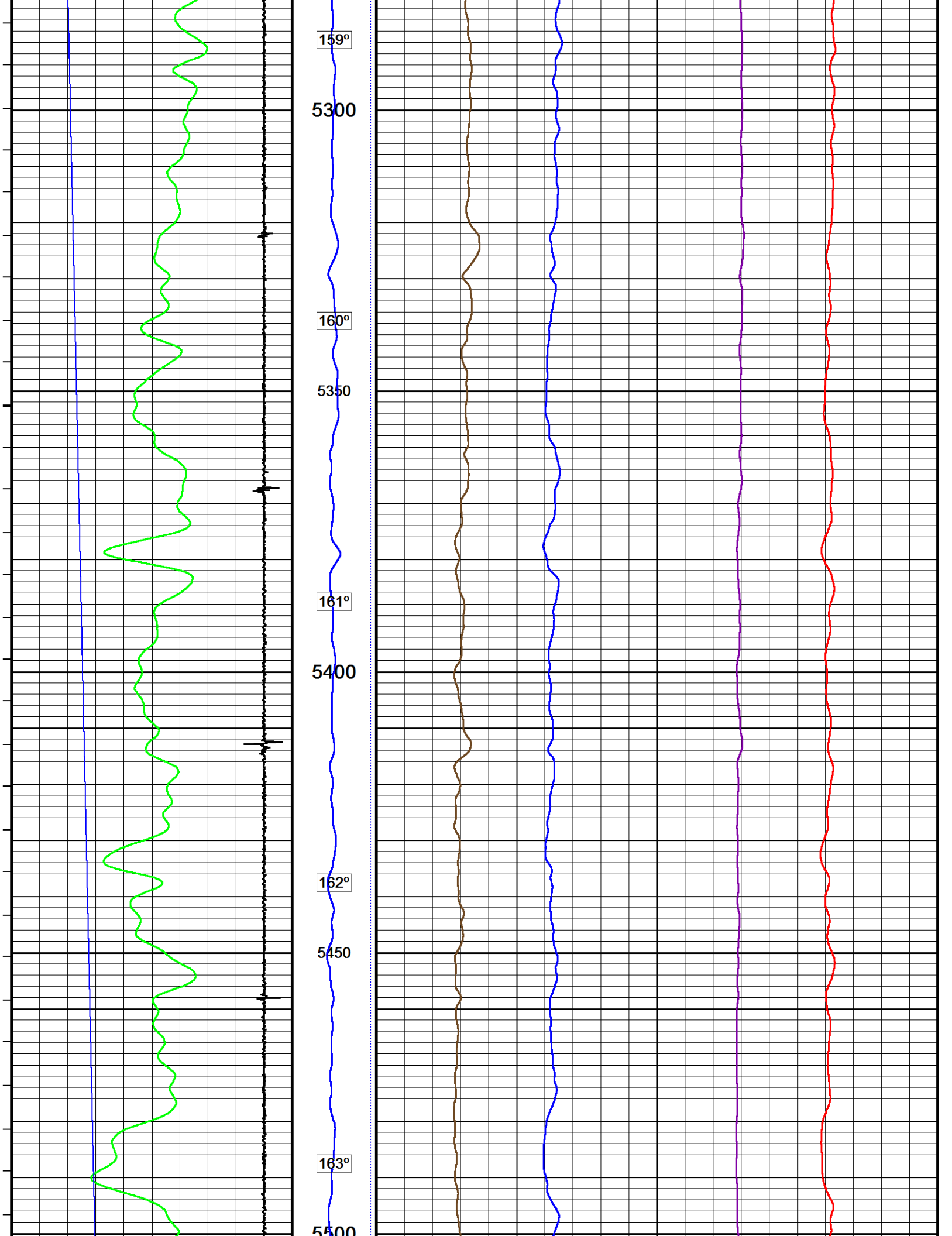
157°

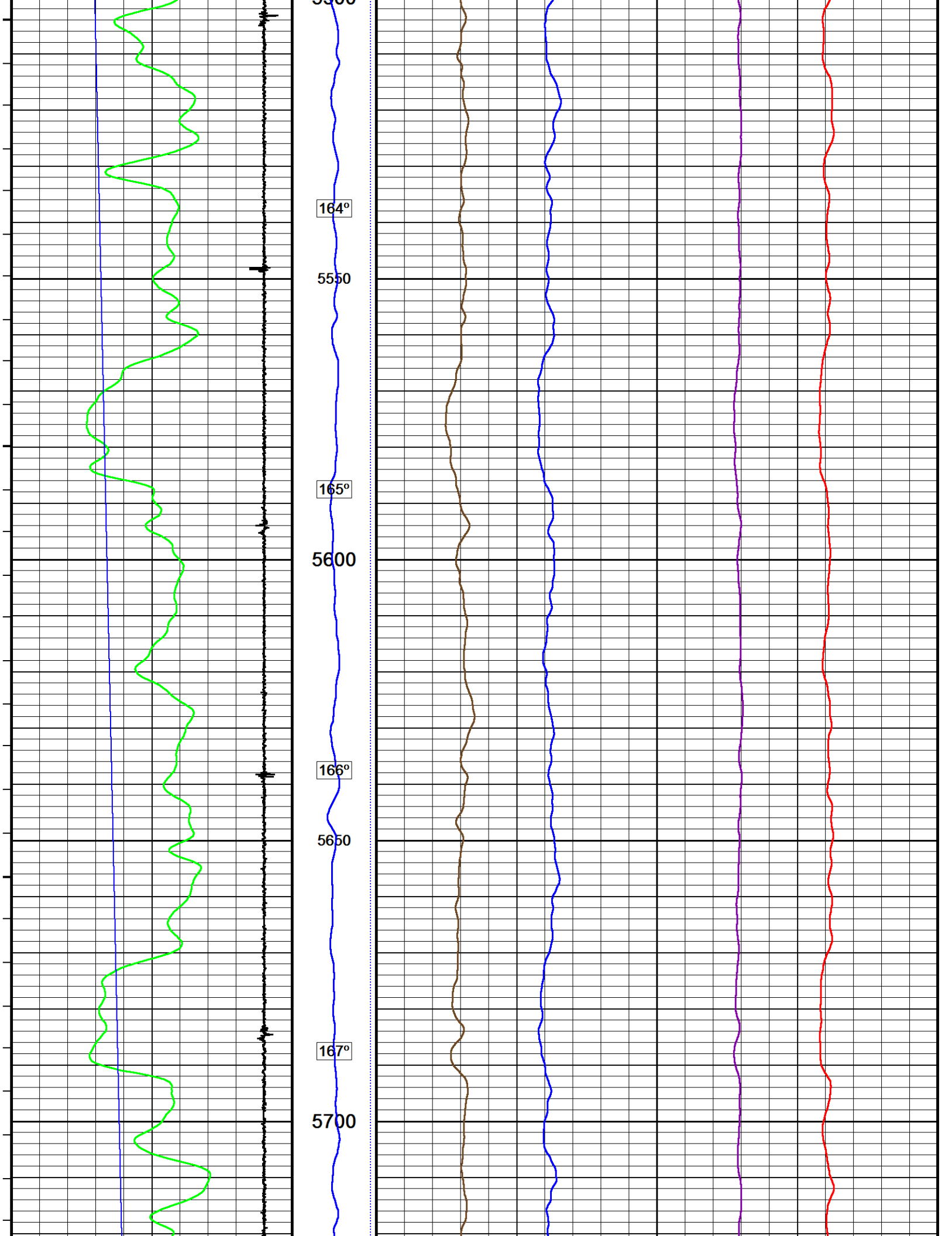
5200

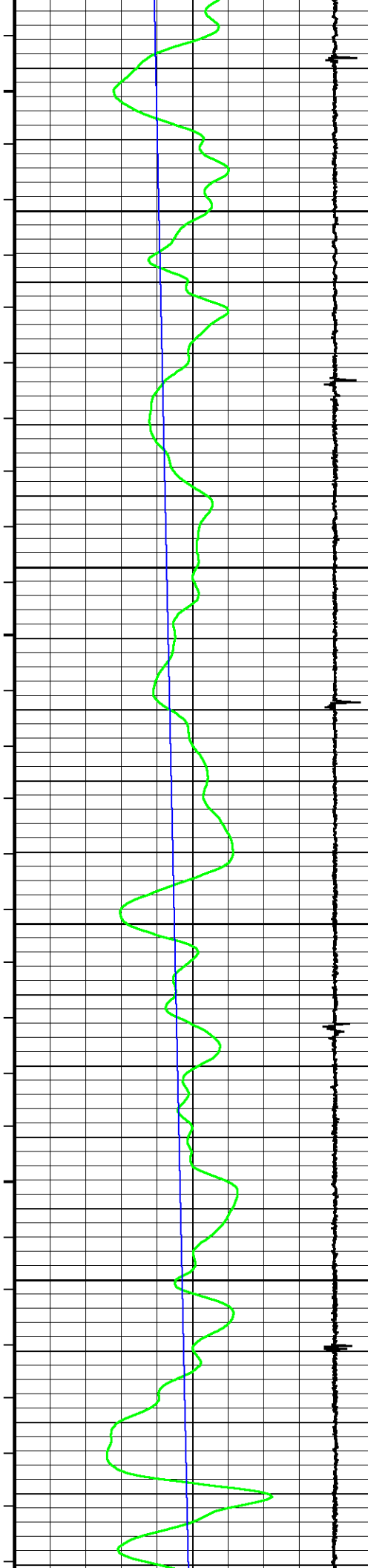
158°

5250









168°

5750

169°

5800

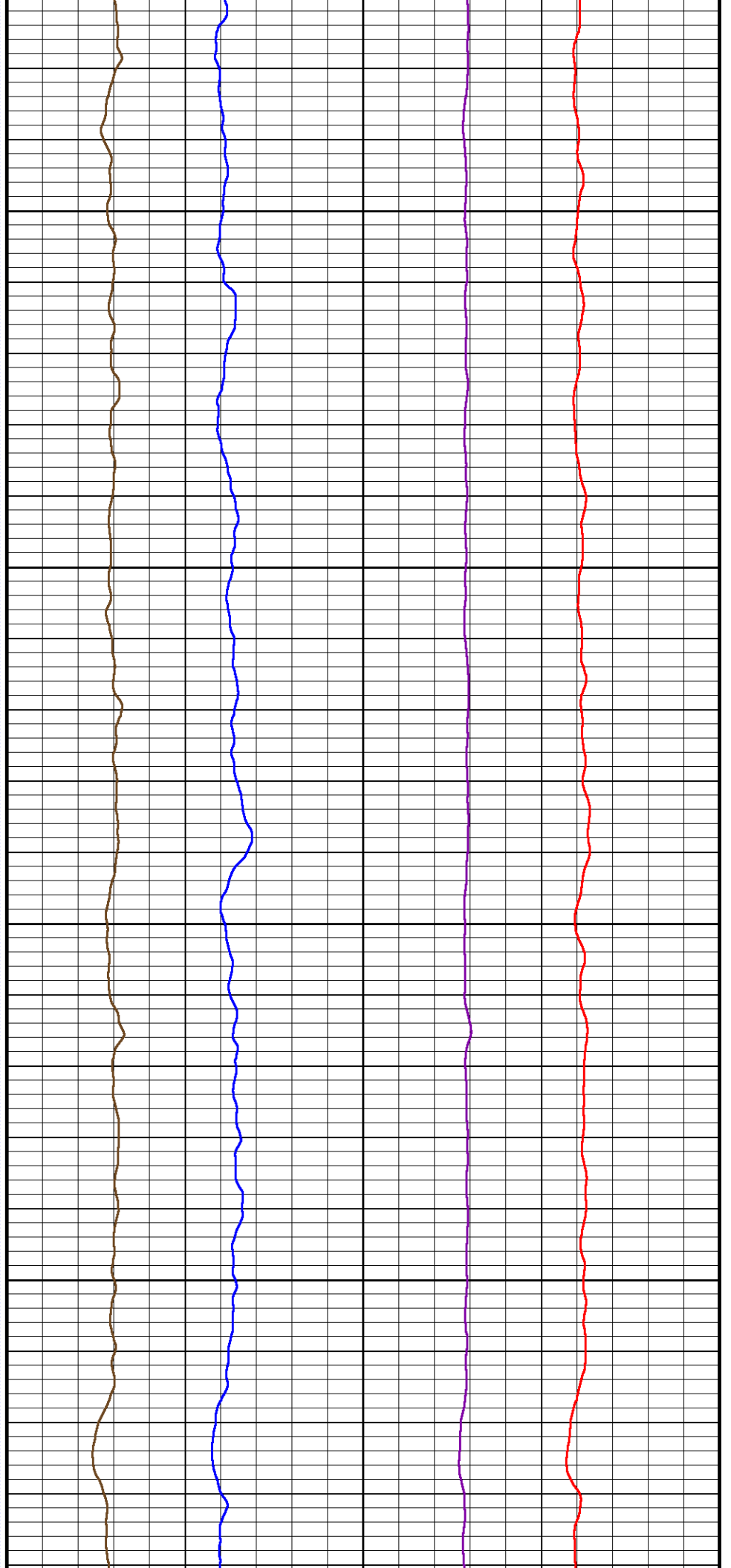
169°

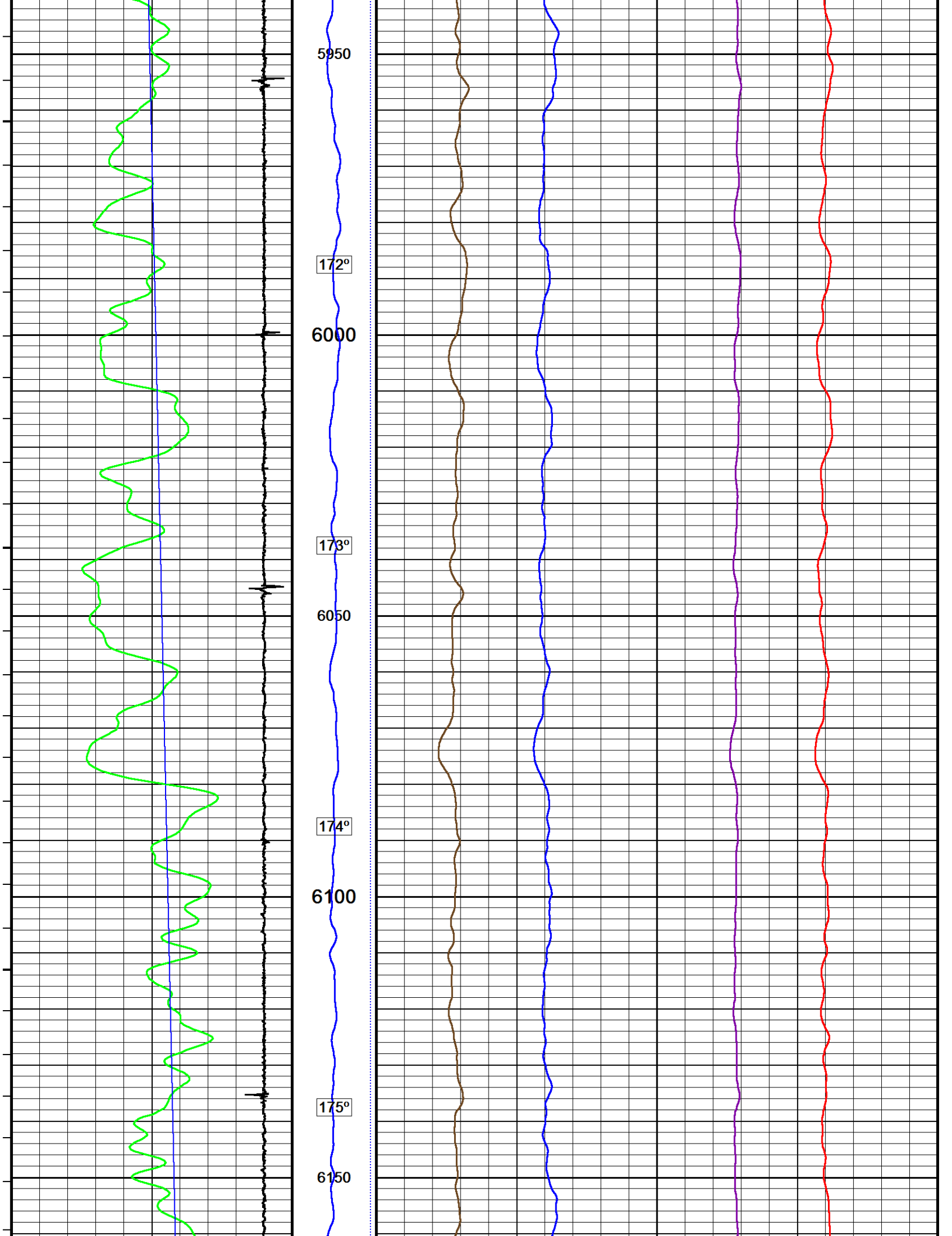
5850

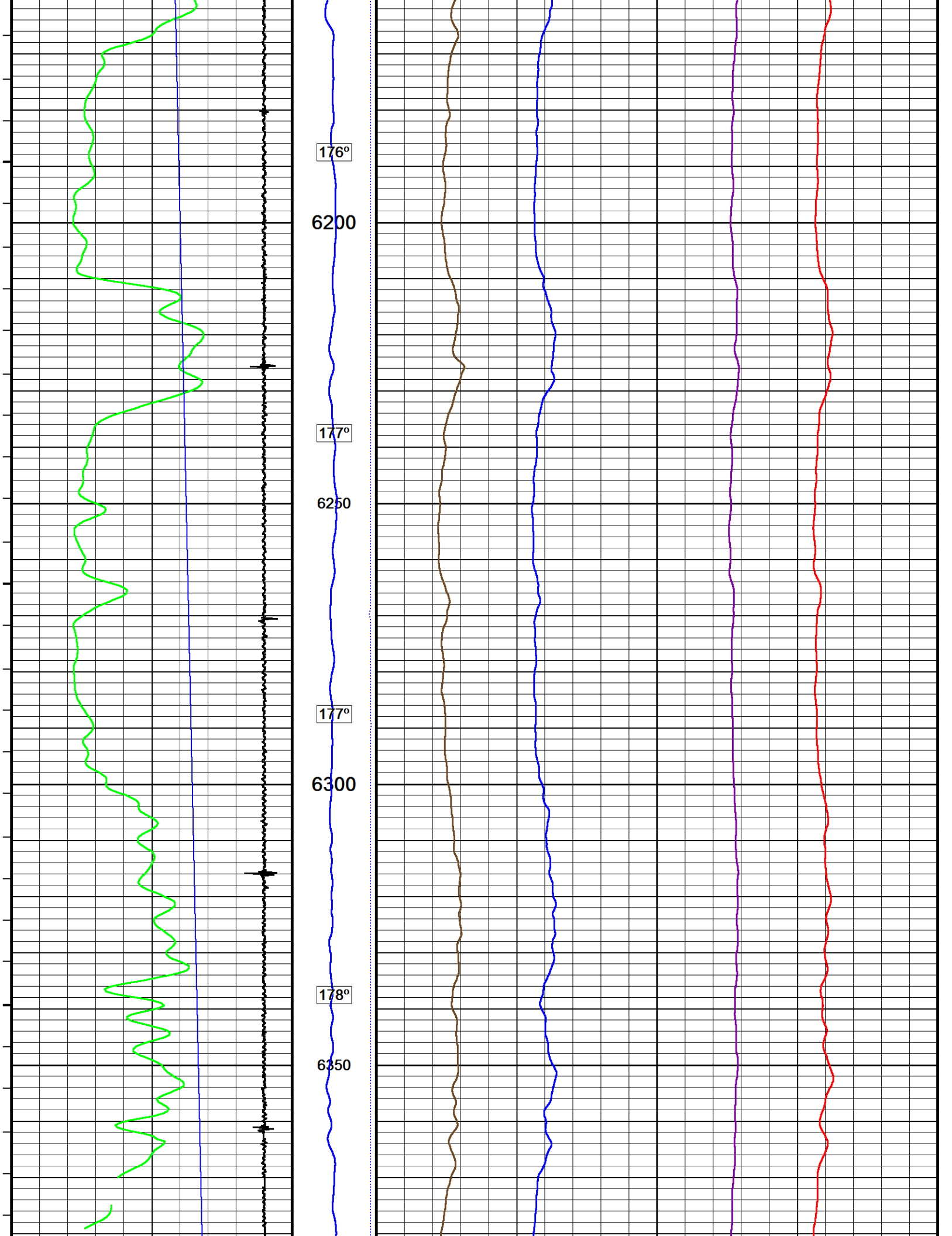
170°

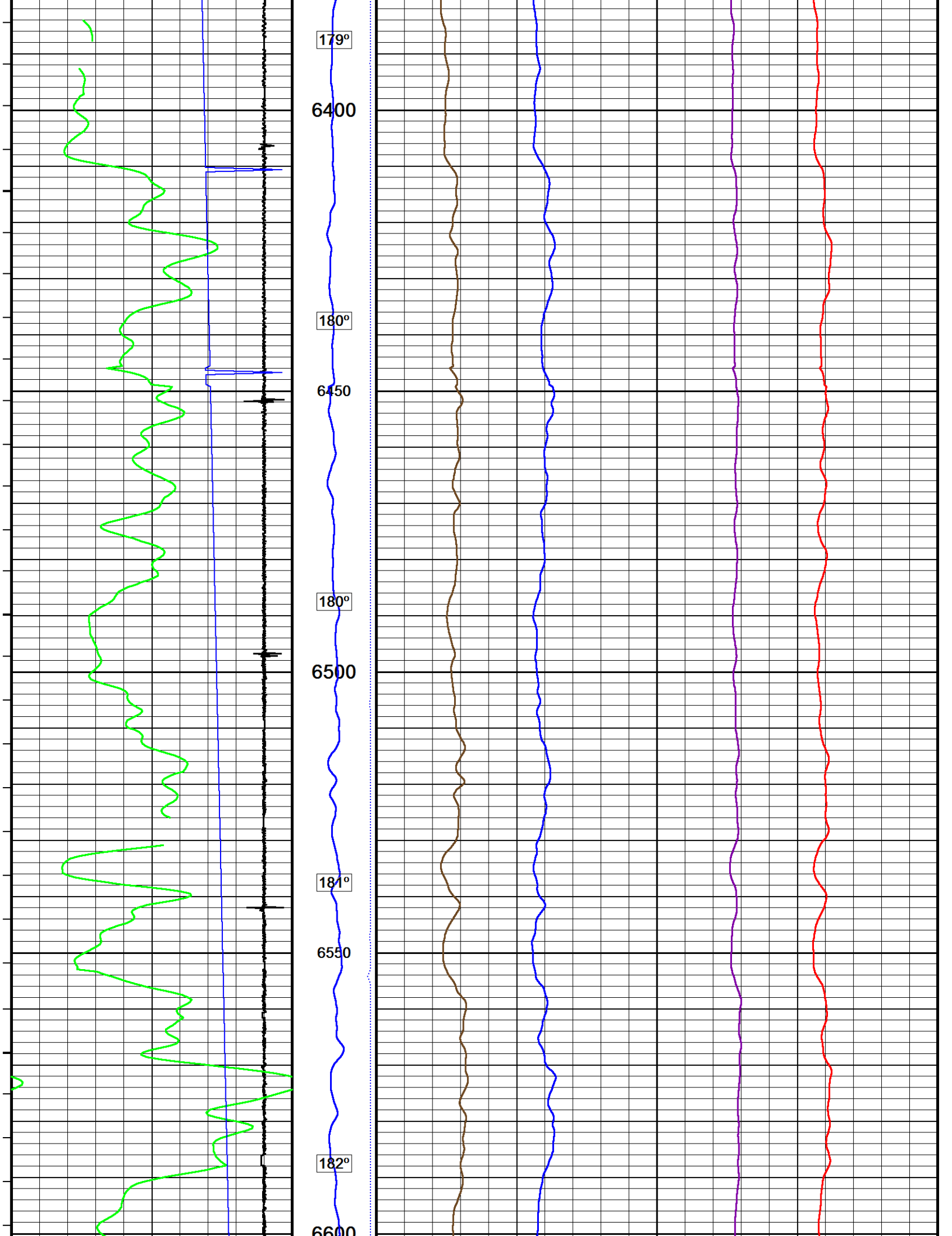
5900

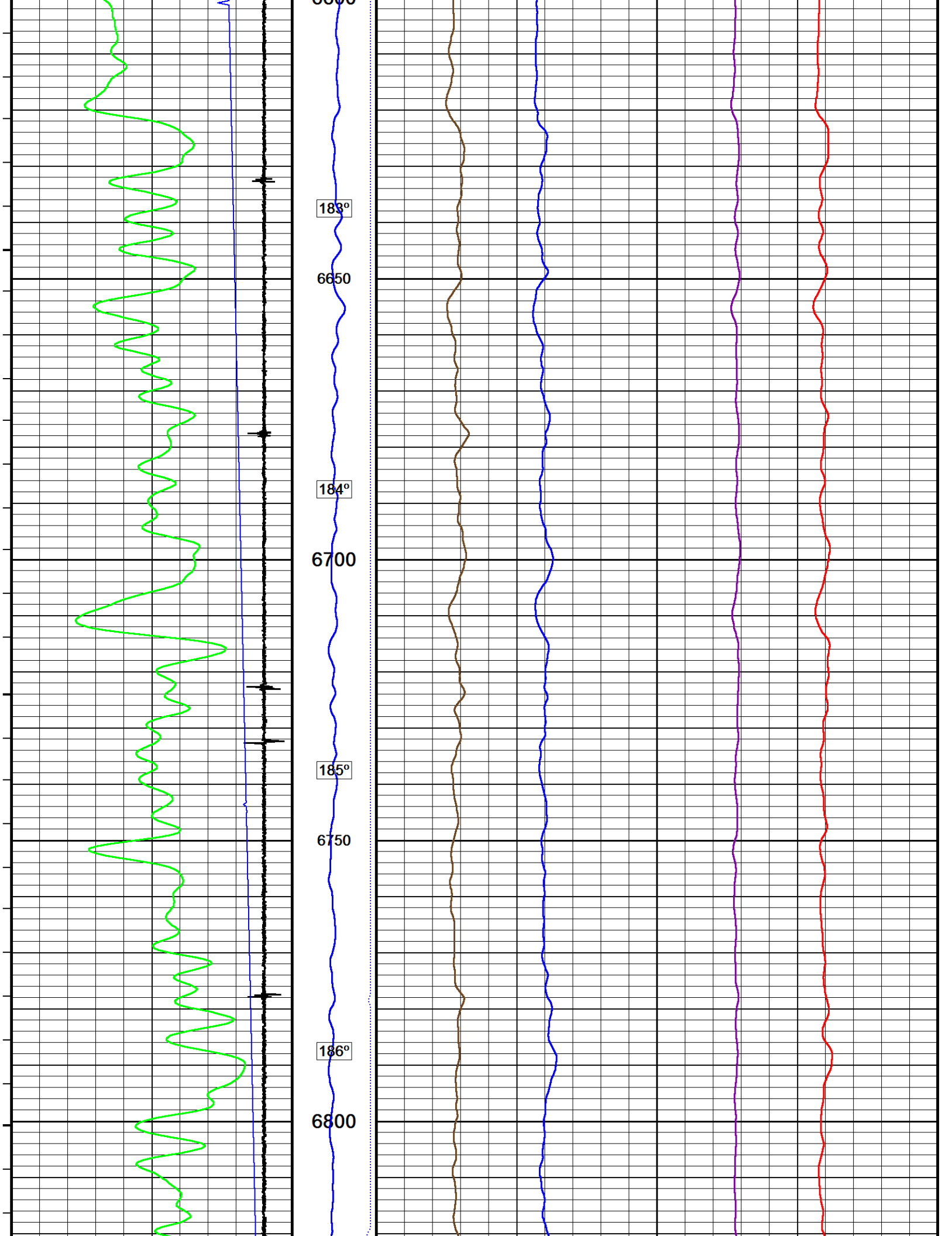
171°

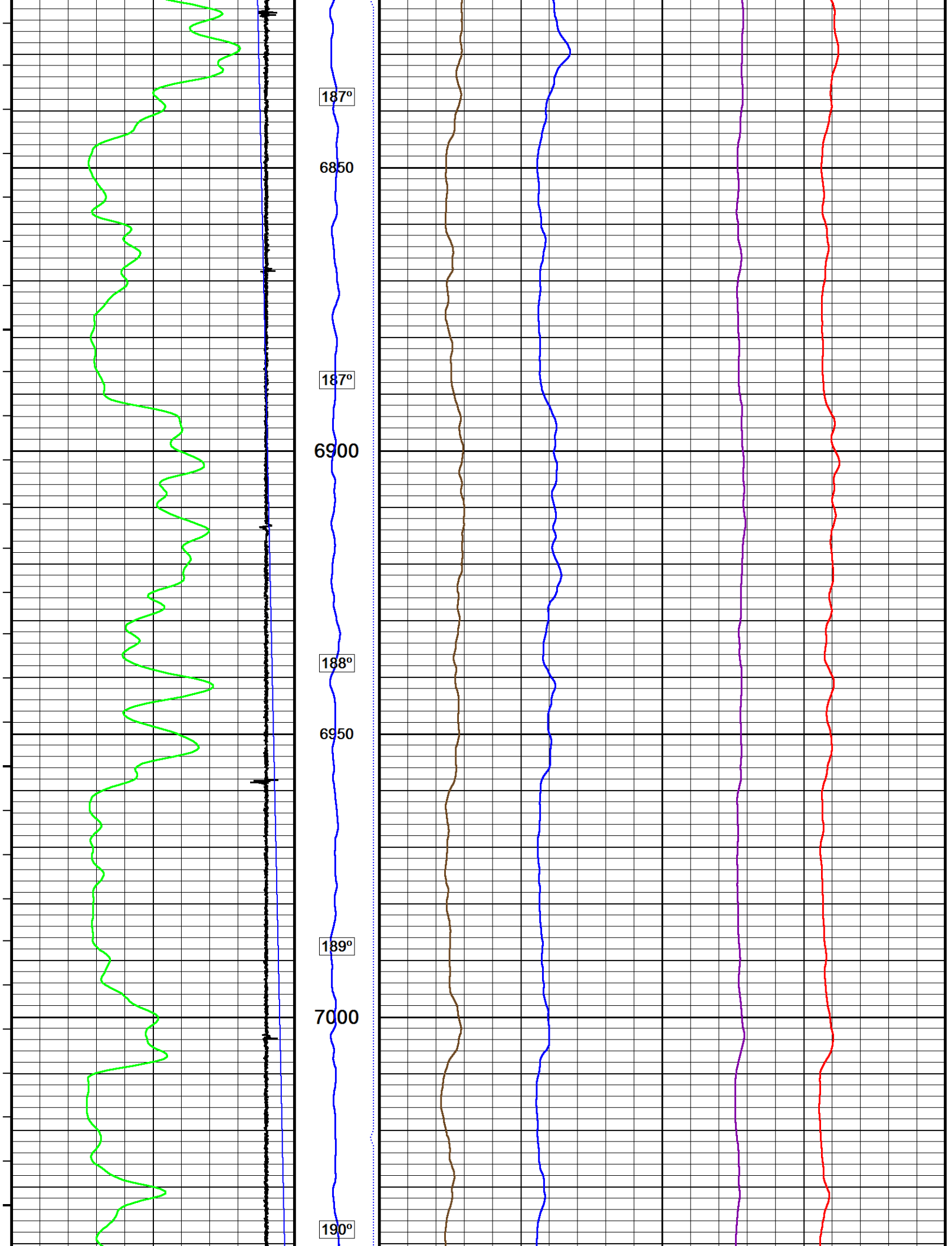


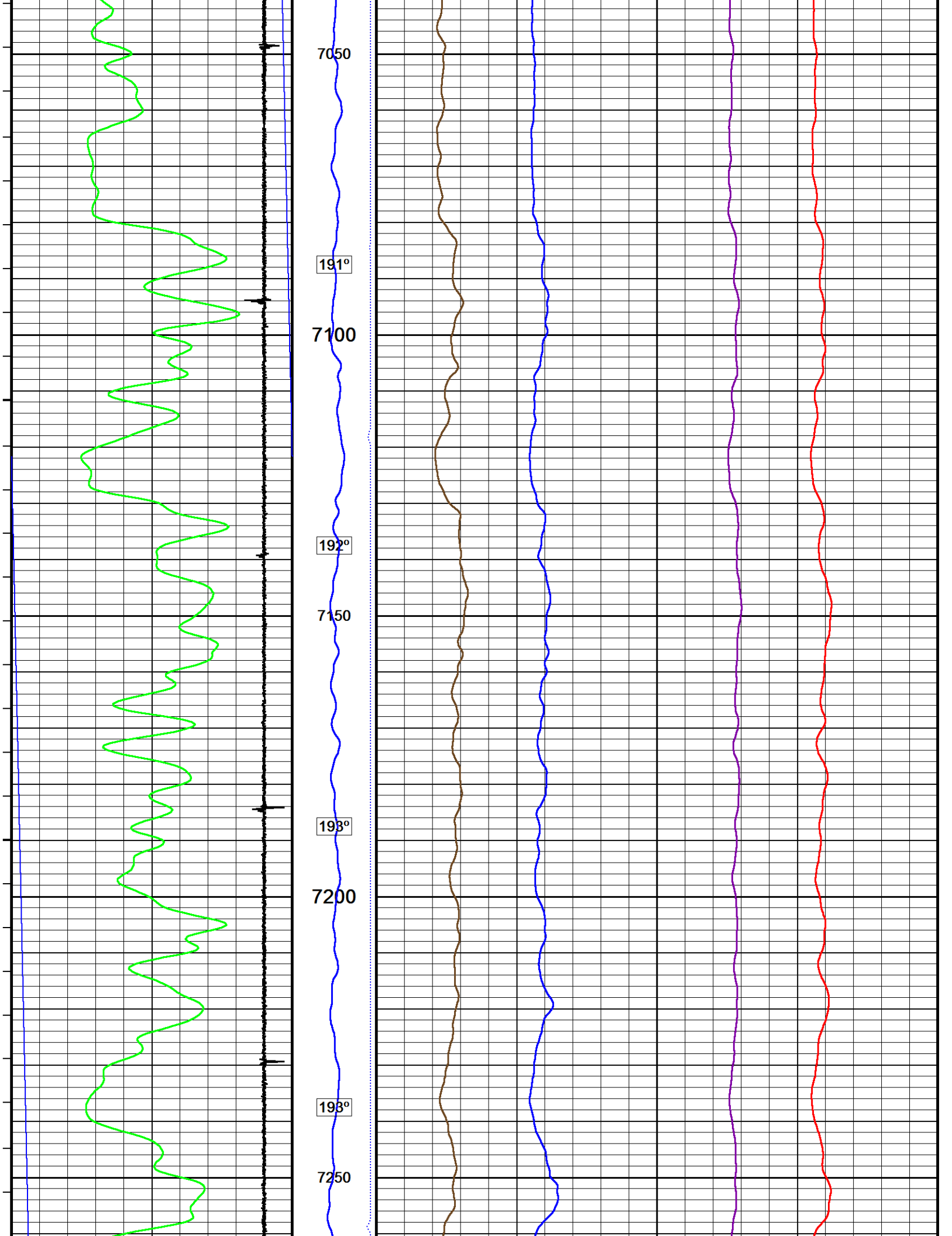


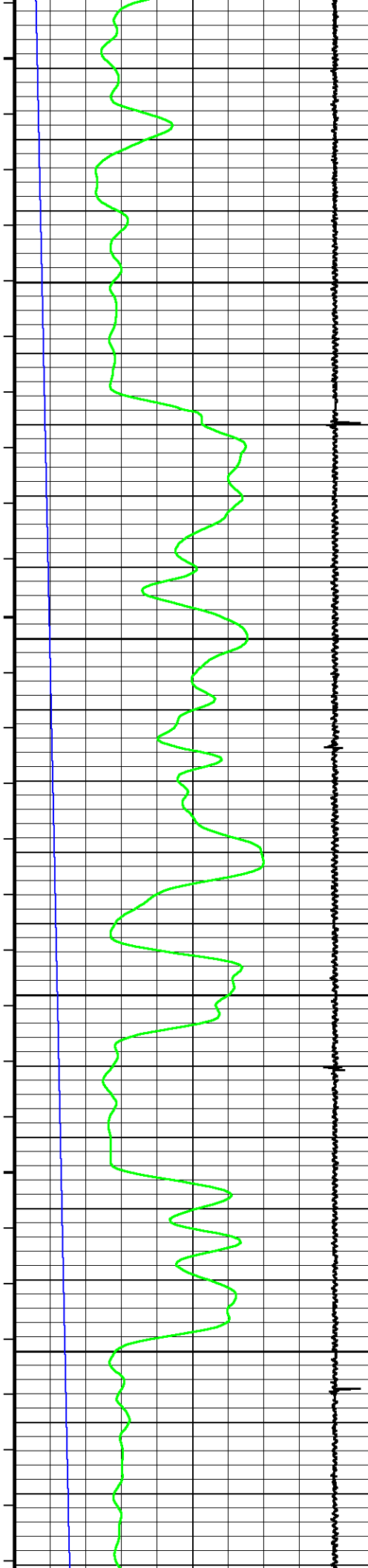












194°

7300

195°

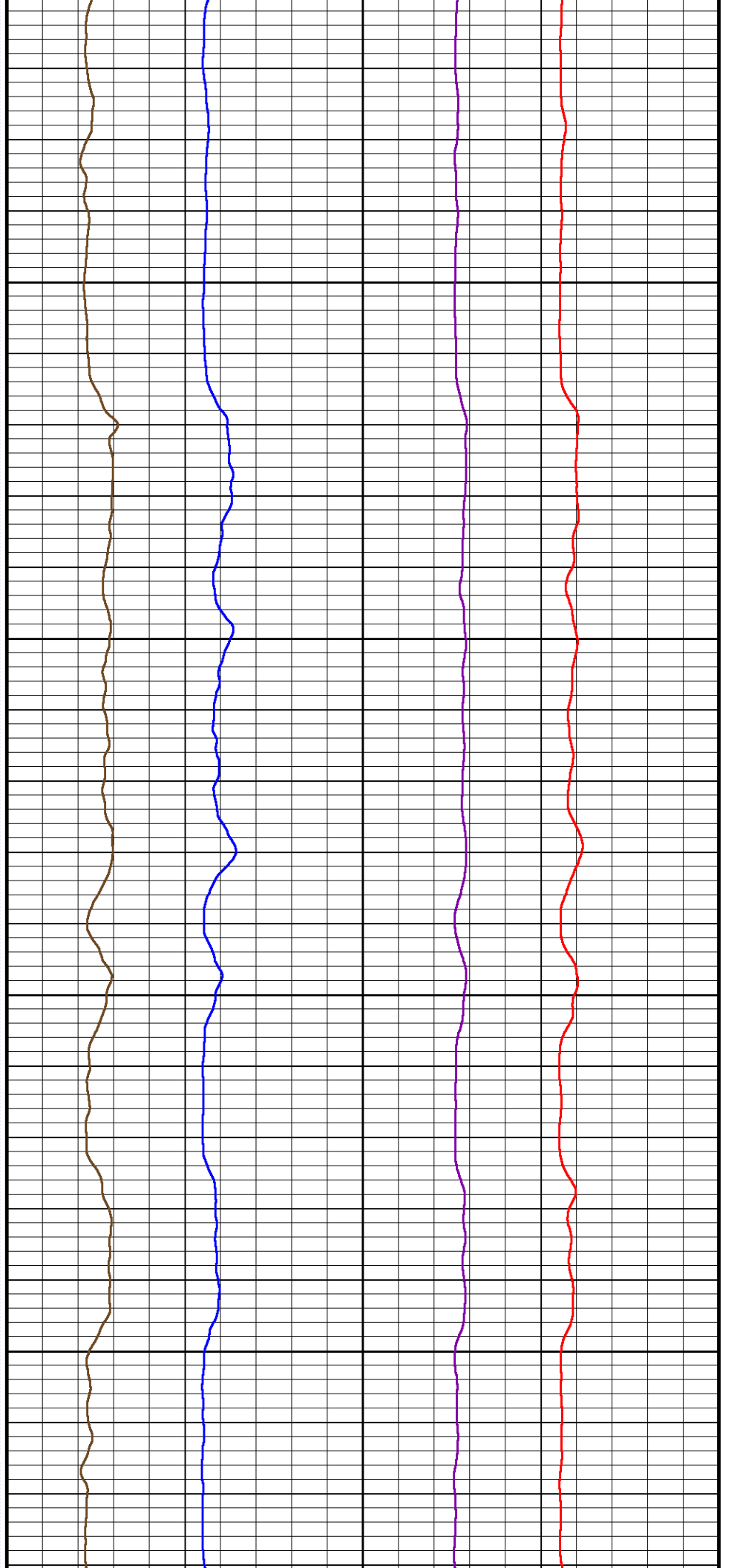
7350

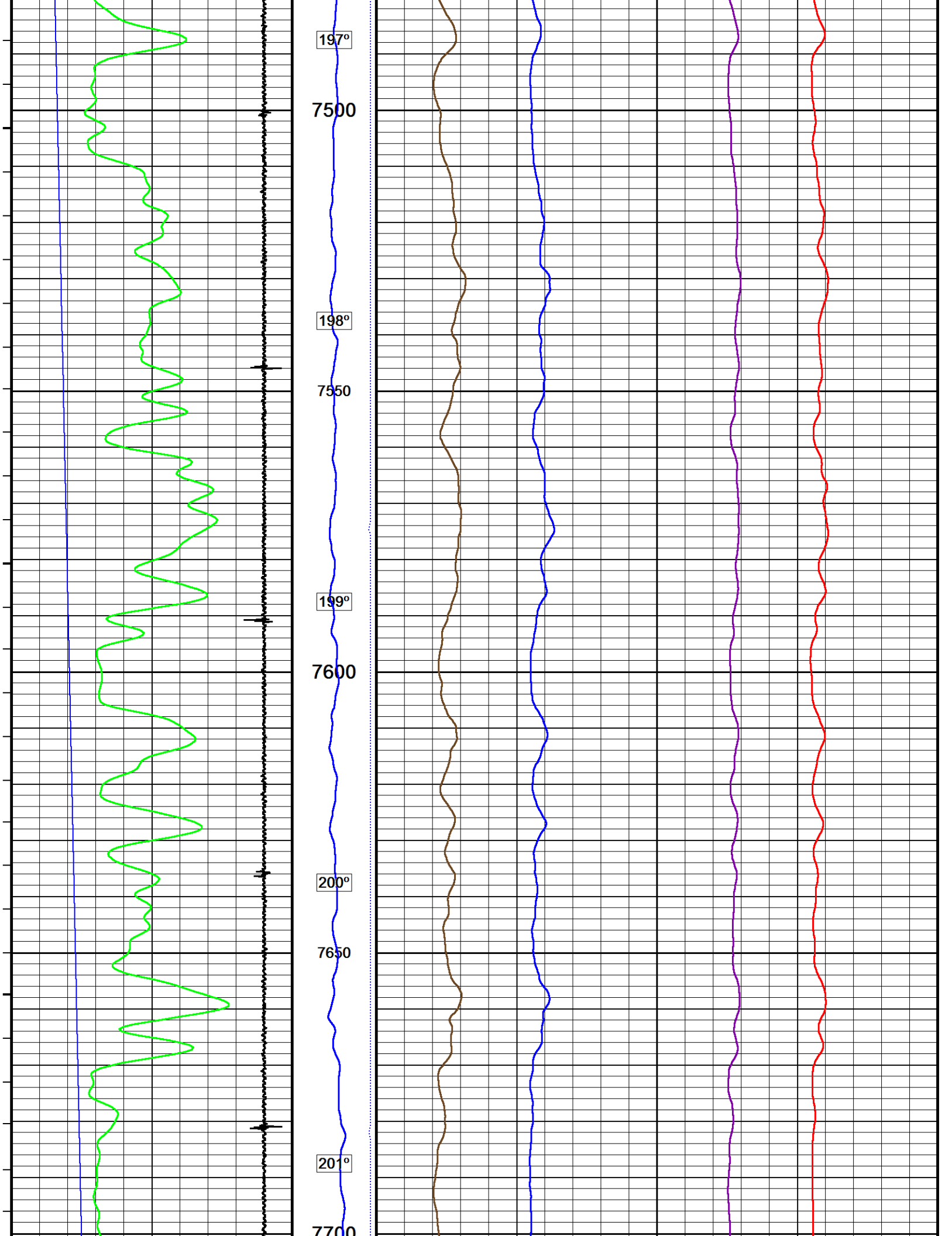
196°

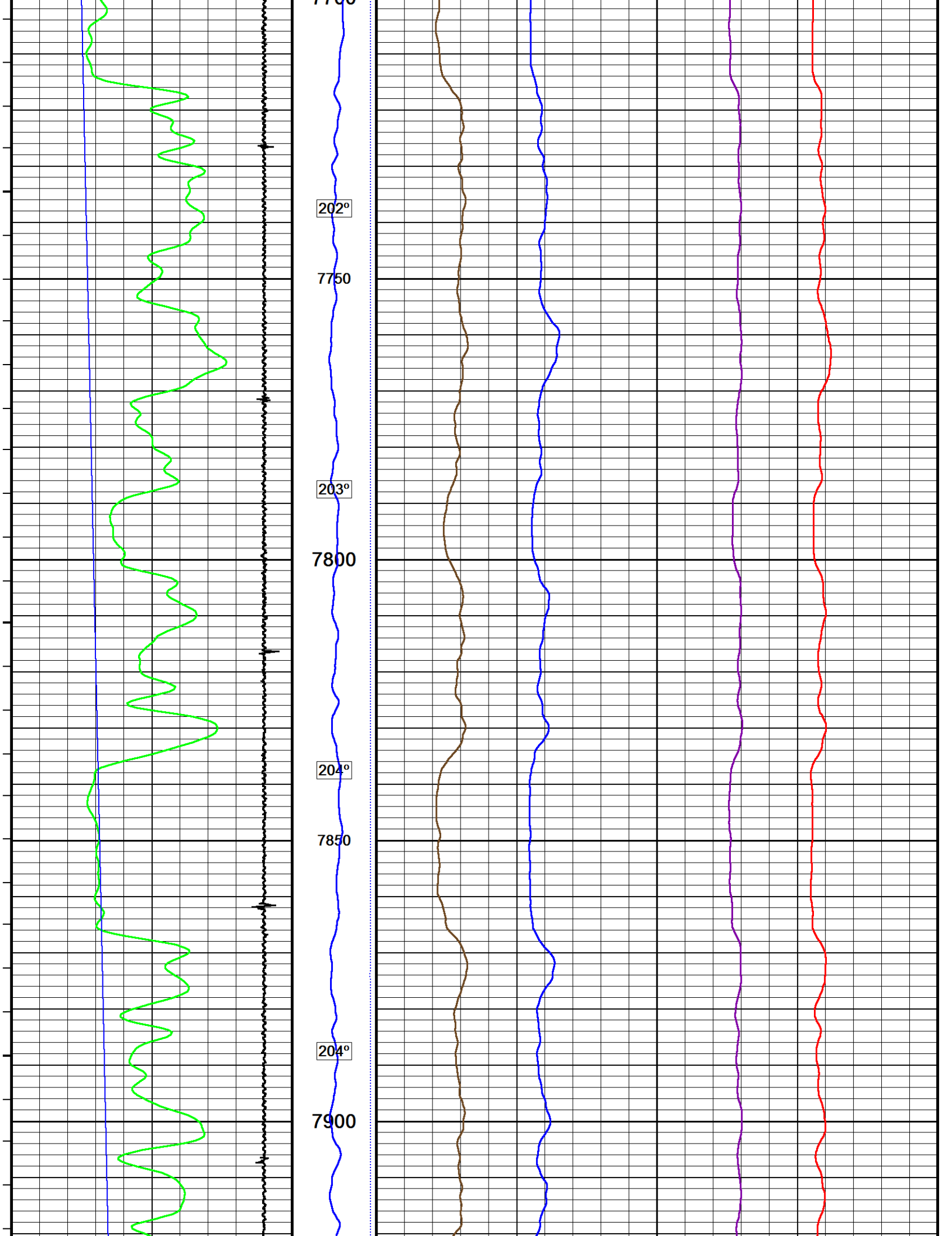
7400

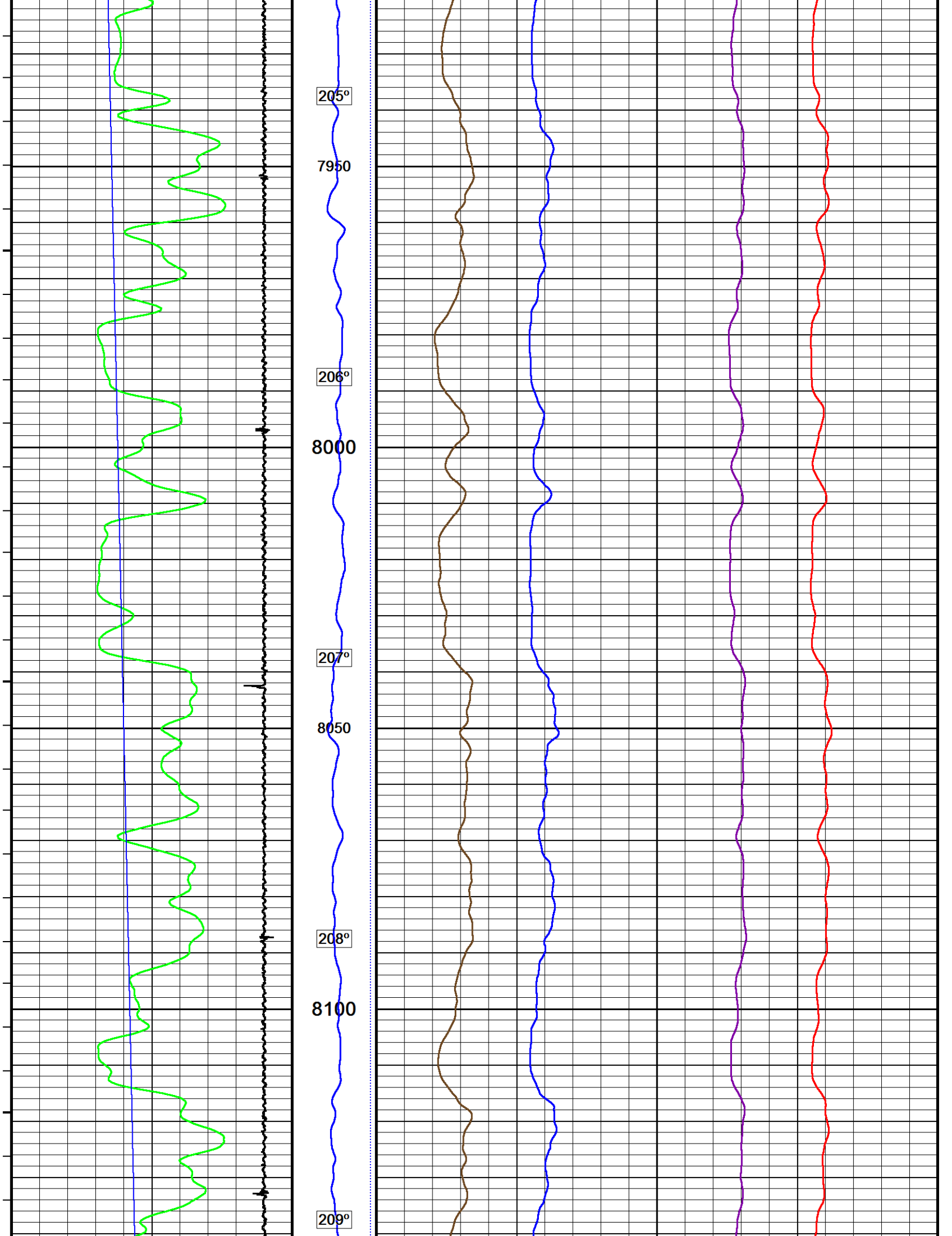
197°

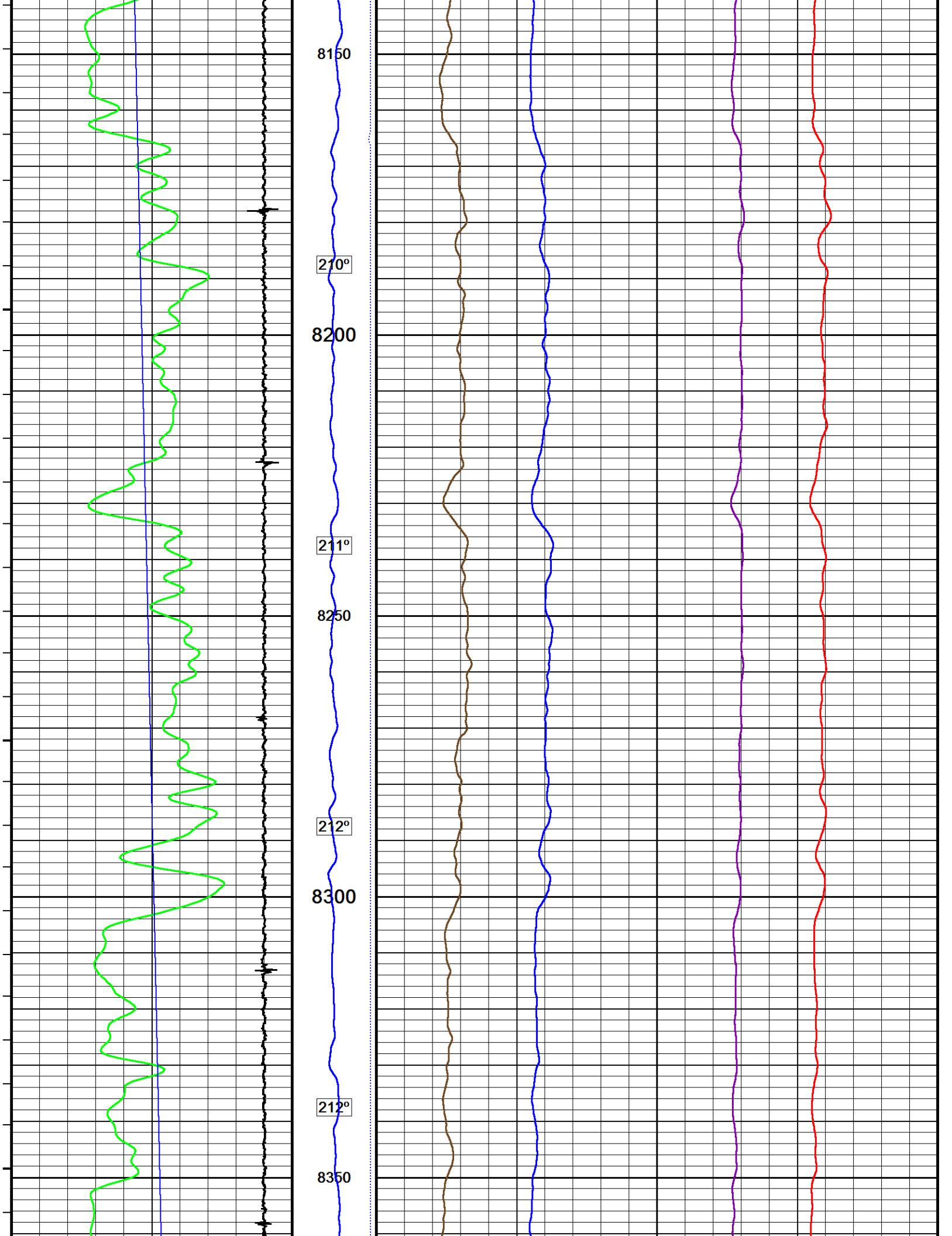
7450

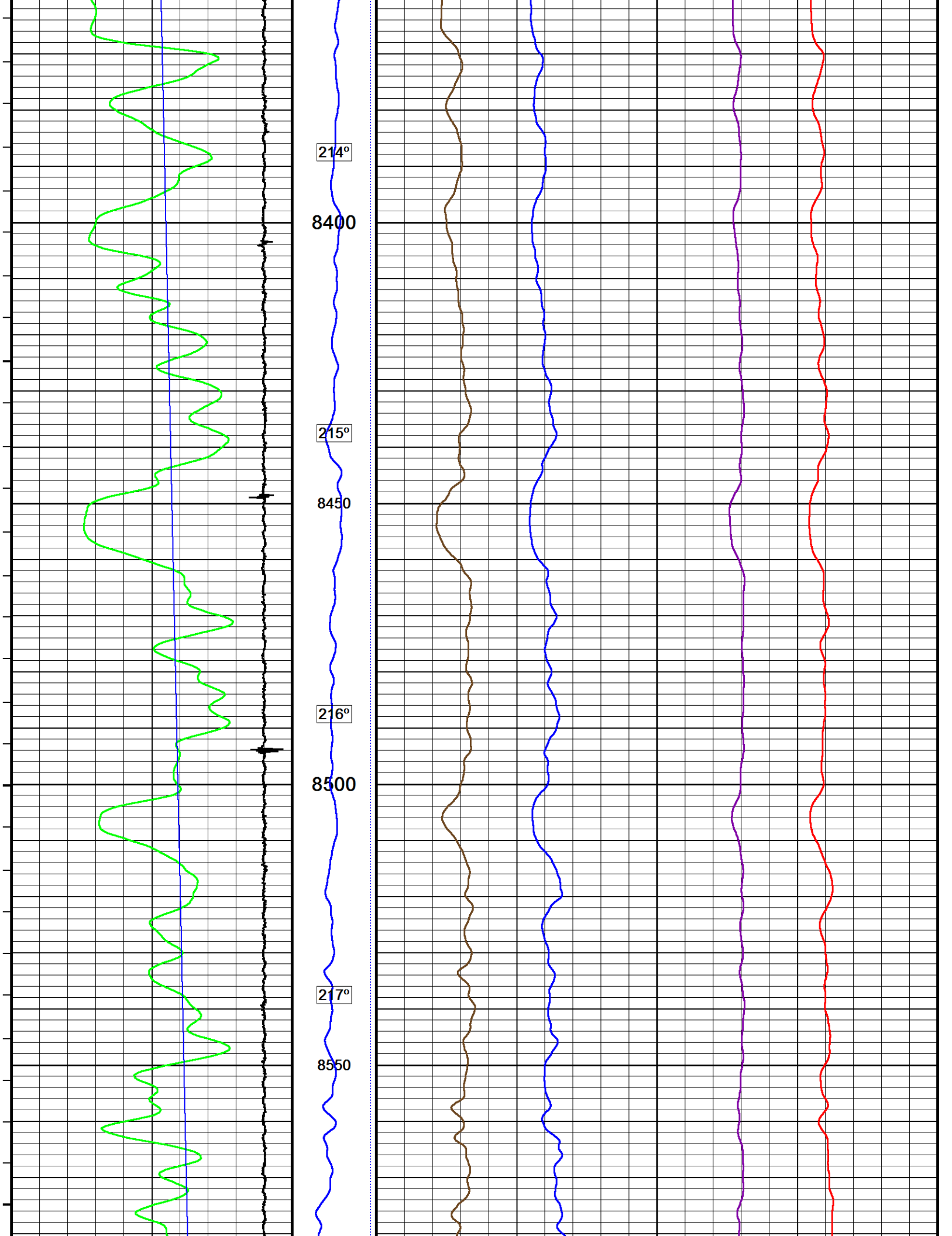


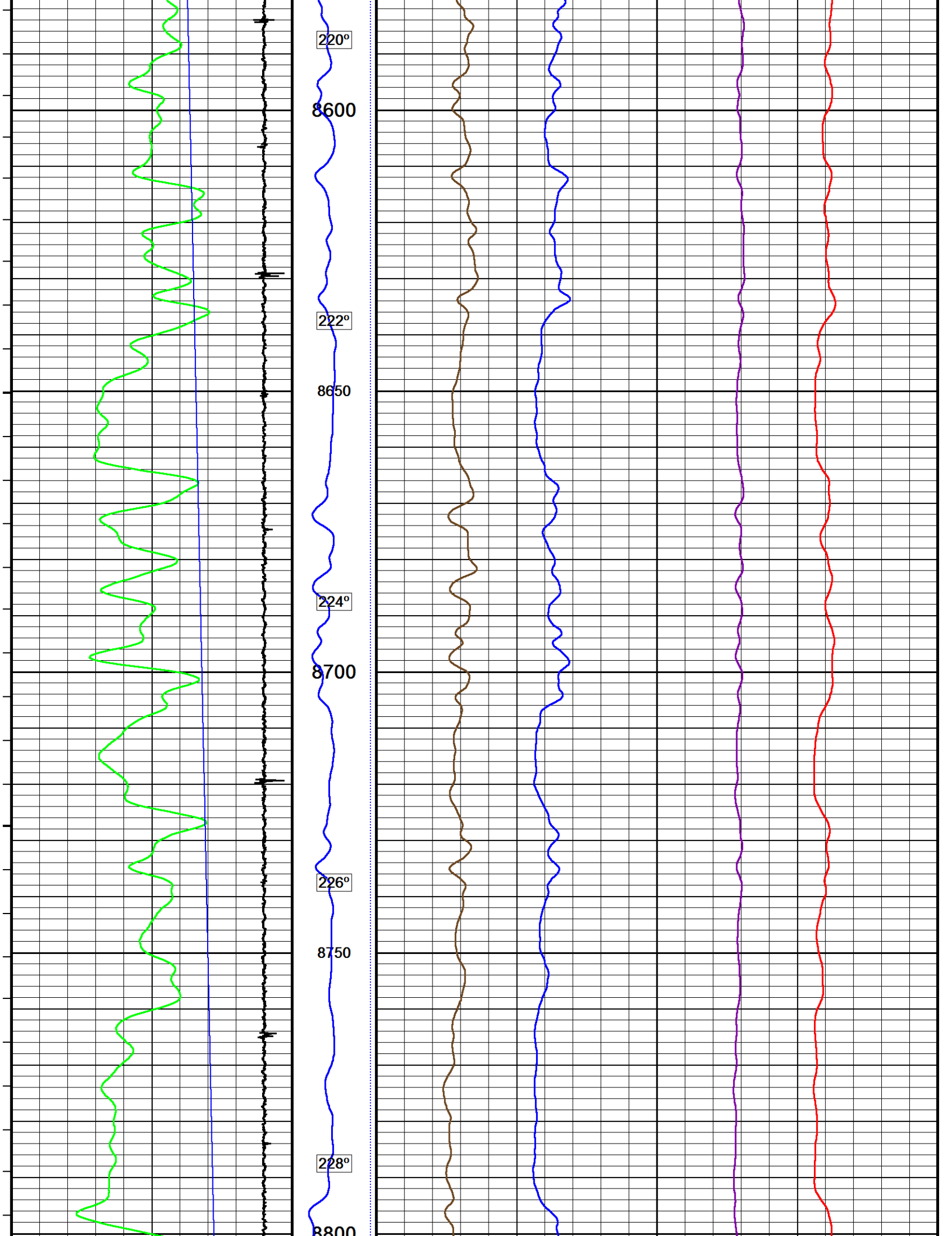


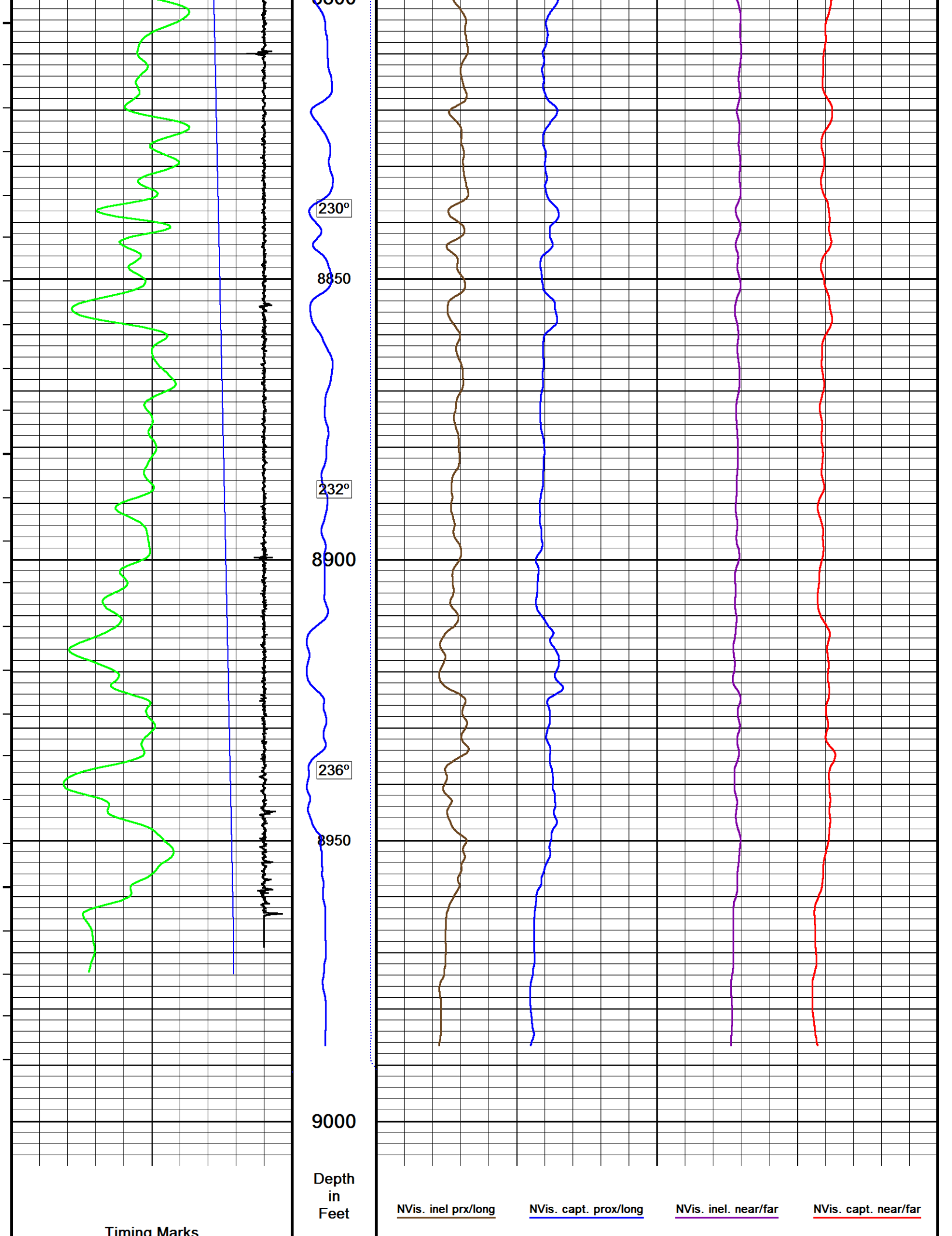


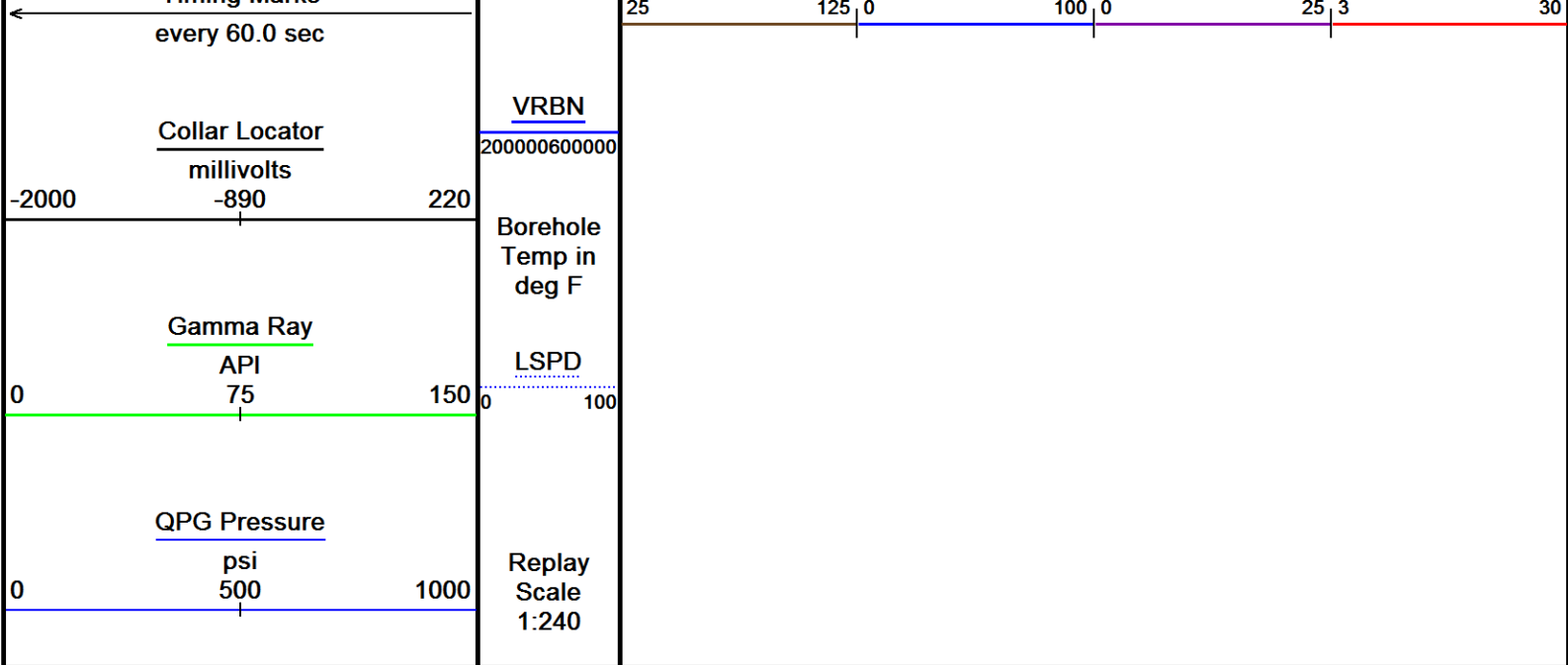










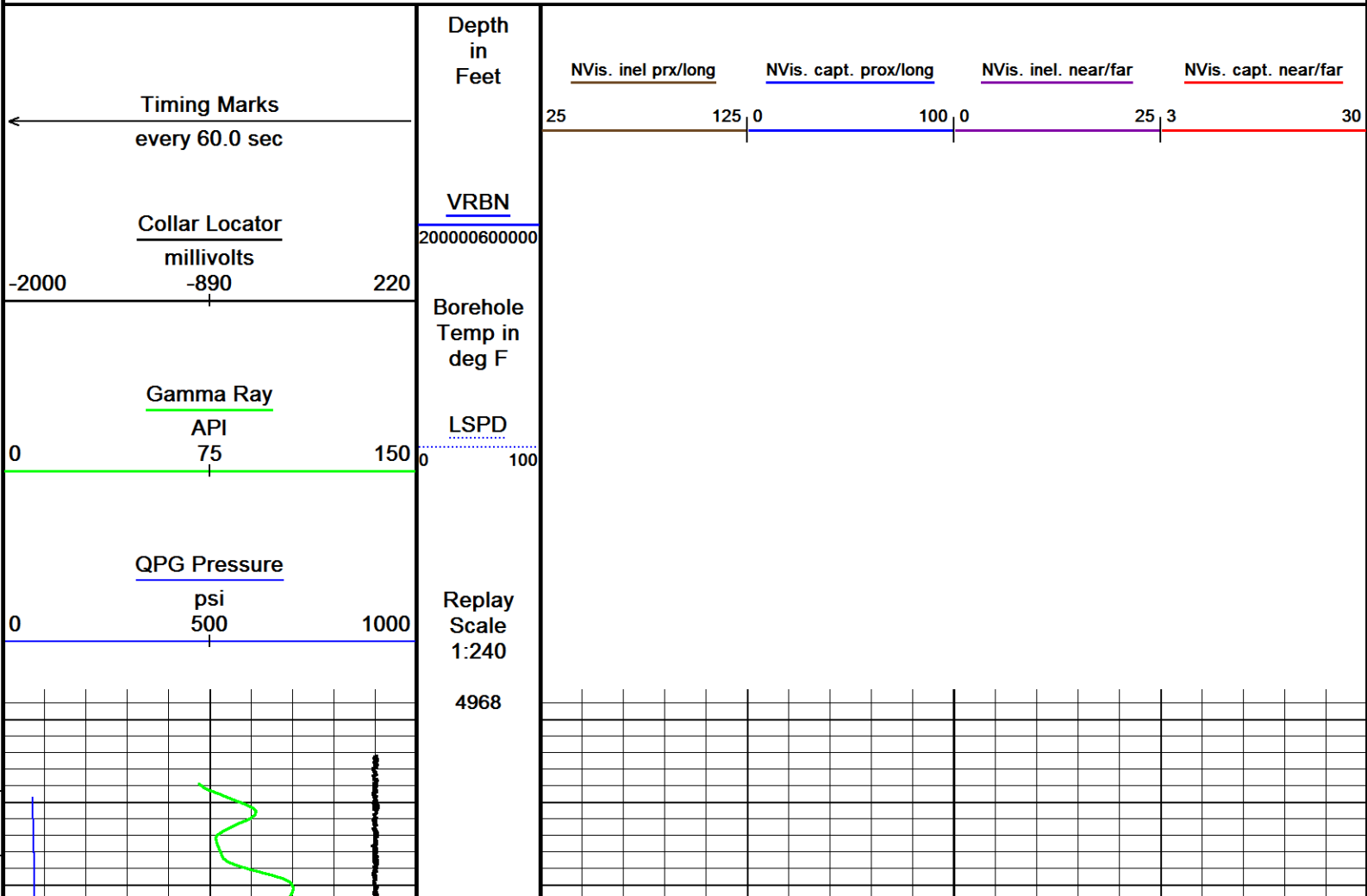


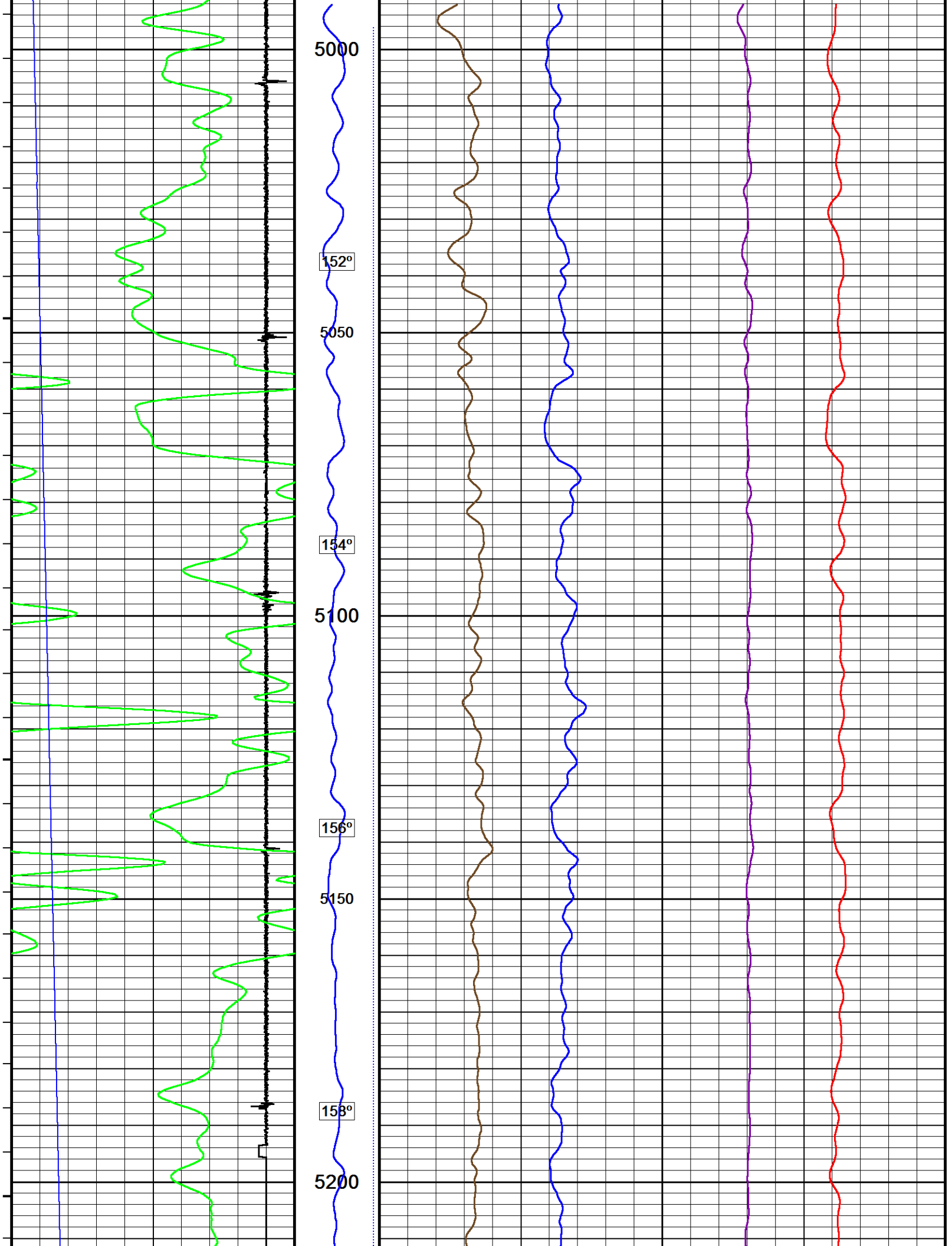
Depth Based Data - Maximum Sampling Increment 12.5cm	Plotted on 18-MAY-2017 11:43
Filename: F:\PUCKETT_35B_23_CRE\PUCKETT_35B_23_CREB_NVISION_MAIN.dta	Recorded on 18-MAY-2017 00:18
Filename: F:\PUCKETT_35B_23_CRE\PUCKETT_35B_23_CREB_NVISION_REPEAT.dta	Recorded on 18-MAY-2017 09:13
System Versions: Logged with 17.01.6744 Plotted with 17.01.6744	

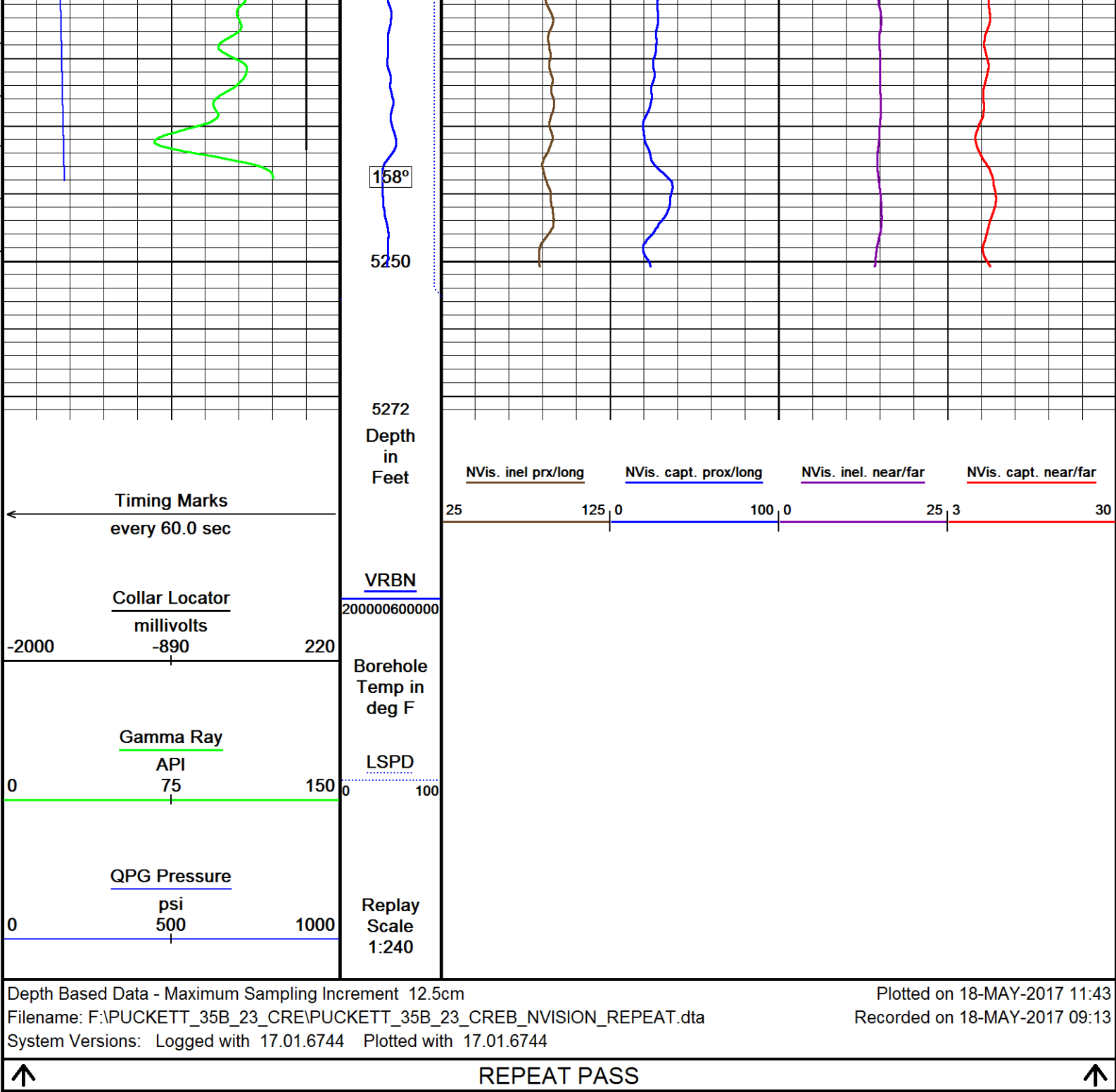
↑	MAIN PASS	↑
---	-----------	---

↓	REPEAT PASS	↓
---	-------------	---

Depth Based Data - Maximum Sampling Increment 12.5cm	Plotted on 18-MAY-2017 11:43
Filename: F:\PUCKETT_35B_23_CRE\PUCKETT_35B_23_CREB_NVISION_REPEAT.dta	Recorded on 18-MAY-2017 09:13
System Versions: Logged with 17.01.6744 Plotted with 17.01.6744	







DOWNHOLE EQUIPMENT	
F:\PUCKETT_35B_23_CRE\PUCKETT_35B_23_CREB_NVISION_MAIN.dta	
Mono-Cablehead MCH-AA 0 LG: 1.03 ft WT: 2.2 lb OD: 1.457 in	
Comm Sub WCC-CB 130 LG: 5.97 ft WT: 24.3 lb OD: 1.693 in	

Gamma Ray K
UGR-KA 108 LG: 2.34 ft WT: 17.6 lb OD: 1.693 in

Quartz Press, Dual ITB, 43mm
QPG-EA 141 LG: 2.23 ft WT: 8.8 lb OD: 1.693 in

Tool Temperature, 43mm, 177C, 10-pin ITB
TMP-NA 137 LG: 1.93 ft WT: 8.8 lb OD: 1.693 in

CRE series II processor section
CRP-BA 129 LG: 3.31 ft WT: 15.4 lb OD: 1.654 in

Casing Reservoir Evaluation Tool Sonde
CRM-BA 129 LG: 9.19 ft WT: 46.3 lb OD: 1.693 in

Gamma Ray K
UGR-KA 131 LG: 2.34 ft WT: 17.6 lb OD: 1.693 in

Terminator sub
TSH-C 0 LG: 0.27 ft WT: 2.2 lb OD: 1.654 in

Total Length: 28.60 ft Weight: 143.3 lb

22.43 ft CCL - Collar Locator

19.99 ft GR - Gamma Ray

17.45 ft PRES - QPG Pressure

15.59 ft TMPN - Temperature

7.52 ft VB24 - NVis. inel. near/far
7.52 ft VB15 - NVis. inel. prx/long
7.52 ft VC15 - NVis. capt. prox/long
7.52 ft VC24 - NVis. capt. near/far
7.52 ft VRBN - VRBN

Tool Zero (0.00ft from bottom)

All measurements relative to tool zero.

SHOP AND FIELD CALIBRATIONS

F:\PUCKETT_35B_23_CRE\PUCKETT_35B_23_CREB_NVISION_MAIN.dta

UGK Before survey cal UGR-KA 108

Gamma Ray Before Survey Calibration

Tool Type: UGR-KA
Calibrator No: MCGGRCC144

Serial No: 108

Background	Calibrator	Standard	Units
------------	------------	----------	-------

39.7	852.4	486.5	API
------	-------	-------	-----

Delta Counts Per Sec: 812.7	CPS/API = 1.671
-----------------------------	-----------------

QPG Master Calibration QPG-EA 141

Gauge

Serial Number	224867	Calibration Date	03 Apr 2013
Gauge Type	QHB108-16-177	Base Check Date	
Max Pressure	16000 PSI	Max Temperature	177 Deg C
Min Pressure	13 PSI	Min Temperature	25 Deg C

Pressure

Pressure polynomial order	3	Temperature polynomial order	3
---------------------------	---	------------------------------	---

	T0	T1	T2	T3	T4
P0	12.1908	0.549635	-0.0194284	1.05432e-005	
P1	1.05432e-005	41.812	-0.0210446	2.67737e-005	
P2	2.67737e-005	-5.40686e-008	-0.00200716	8.54172e-006	
P3	8.54172e-006	-4.39823e-008	2.01386e-011	6.62637e-007	
P4					

Temperature

Temperature polynomial order	3
------------------------------	---

	T0	T1	T2	T3	T4
	24.9381	-0.729899	-0.00085548	-6.84964e-007	

Temperature Tool Shop Survey Calibration TMP-NA 137

Temperature Tool Shop Survey Calibration

Tool Type: TMP-NA

Serial No: 137

calibration

Standard

Measured

32 DEGF

36714 Hz

212 DEGF

50849 Hz

UGK Before Survey Cal UGR-KA 131

Field Calibration on 26-APR-2017 13:52

Gamma Ray Before Survey Calibration

Tool Type: UGR-KA
Calibrator No: MCGGRCC144

Serial No: 131

Background

Calibrator

Standard

Units

27.9

848.9

486.5

API

Delta Counts Per Sec: 821.0

CPS/API = 1.688

COMPANY CAERUS OIL & GAS

WELL PUCKETT 35B-23

FIELD GRAND VALLEY

PROVINCE/COUNTY GARFIELD

COUNTRY/STATE USA / COLORADO

Elevation Kelly Bushing 8426 feet

Elevation Drill Floor 8426 feet

Elevation Ground Level 8396 feet

Bottom Log Interval 8991.00 feet

Depth Driller 9068.00 feet

Depth Logger 8991.00 feet



Weatherford[®]

RAPTOR NVISION LOG