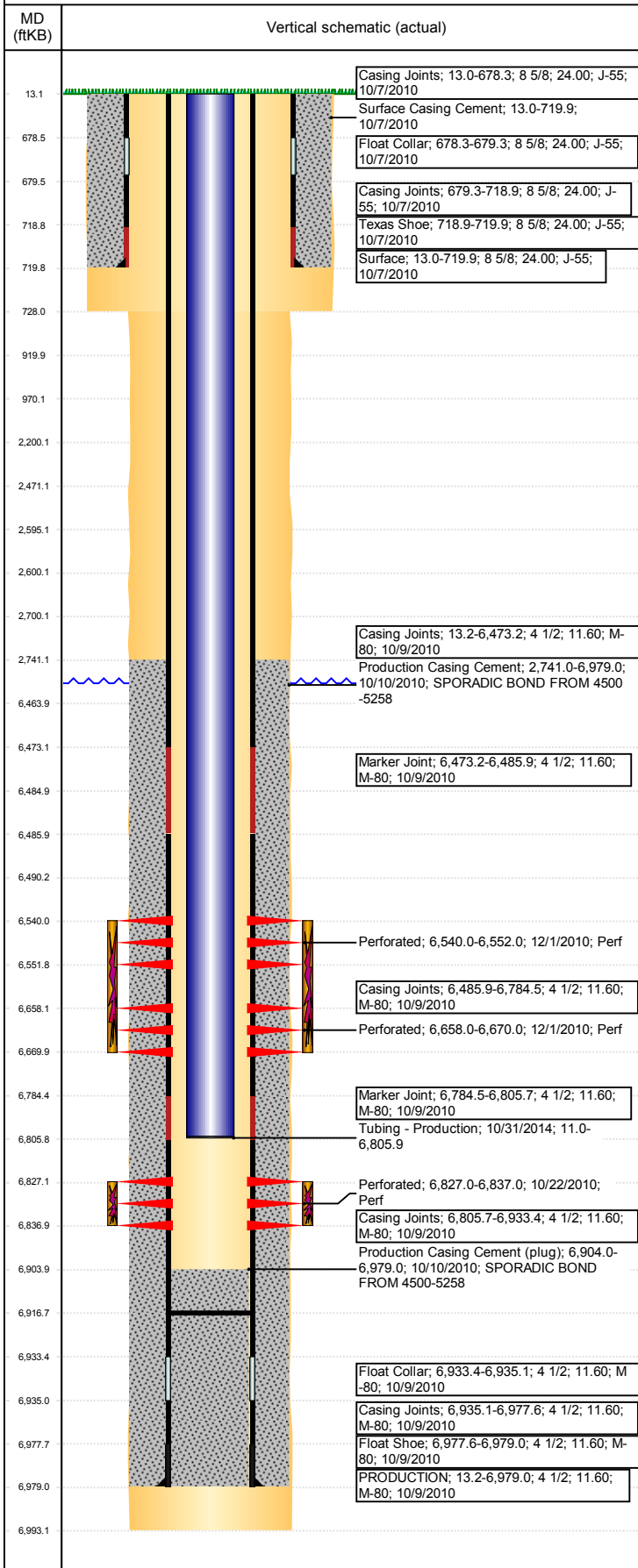


# Operations Wellbore Schematic Report

**Well Name: NCLP USX AA05-01**

VERTICAL - ORIGINAL HOLE, 5/31/2017 11:52:28 AM



## Well Header

API 05-123-31885	Business Unit DJ BASIN	District 15	Well Config VERTICAL
Original KB Elevation (ft) 4,725	KB - GL / MSL (ftKB) 13.00	Spud Date 10/6/2010	P & A Date
Comment			

Directions To Well  
WCR 63 & 74, GO EAST .0.1 MILES, SOUTH 0.6 MILES, WAST 0.25, NORTH .5, EAST .1 INTO LOCATION.

Current PBTD (mKB)  
**ORIGINAL HOLE - 6,916.6**

## Surface Location (Congressional)

Quarter 3 NE	Quarter 4 NE	Section 5	Township 6	Twnshp N/S Dir N	Range 63	Range E/W Dir W
-----------------	-----------------	--------------	---------------	---------------------	-------------	--------------------

## Bottom Hole Location

North-South Distance (ft)	From N or S Line	East-West Distance (ft)	From E or W Line
---------------------------	------------------	-------------------------	------------------

## Plug Back Total Depths

Date	Depth (ftKB)	Method	Com
10/10/2010	6,933.0	CASING TALLY	FLOAT COLLAR
12/10/2010	6,918.0	TUBING TALLY	DRILL CFTP W/ CUTRITE BIT AND N2, CHASE DO...
6/20/2014	6,862.9	TAG	TAG FILL W/ 55.00'
6/23/2014	6,916.6	TAG	C/O TO PBTD

## Wellbore Sections

Section Des	Size (in)	Act Top, MD (ftKB)	Act Btm, MD (ftKB)
SURFACE	12 1/4	13	728
PRODUCTION	7 7/8	728	6,993

## Zone Statuses

Zone Name	Status Date	Status	Fluid Type	Job	Prod Method
CODELL	12/5/2010	PR	Water	DRILLING/COMPLETION - ORIGINAL, 10/6/2010...	Flowing
CODELL	3/28/2011	PR		HORIZONTAL WELL PREP, 1/24/2014 06:00	
CODELL	10/8/2014	PR		DRILLING/COMPLETION - ORIGINAL, 10/6/2010...	
NIOBRARA	12/5/2010	PR	Water	HORIZONTAL WELL PREP, 1/24/2014 06:00	Flowing
NIOBRARA	3/28/2011	PR		HORIZONTAL WELL PREP, 1/24/2014 06:00	
NIOBRARA	10/8/2014	PR		HORIZONTAL WELL PREP, 1/24/2014 06:00	
NIOBRARA	10/10/2014	TA		HORIZONTAL WELL PREP, 1/24/2014 06:00	
NIOBRARA	10/31/2014	PR		HORIZONTAL WELL PREP, 1/24/2014 06:00	
NIOBRARA	3/10/2017	SI			

## Casing Strings

Csg Des	Run Date	OD (in)	Wt/Len (lb/ft)	Grade	Top, MD (ftKB)	MD (ftKB)
Surface	10/7/2010	8 5/8	24.00	J-55	13.0	719.9
PRODUCTION	10/9/2010	4 1/2	11.60	M-80	13.2	6,979.0

## Cement

Des	Top (ftKB)	Btm (ftKB)
Surface Casing Cement	13.0	719.9
Production Casing Cement	2,741.0	6,979.0

## Tubing Components

Item Des	OD (in)	Wt (lb/ft)	Grade	Jts	Len (ft)

## Perforation Data

Linked Zone	Bnch/Stg	Sum of Entered Shot Total	Top (ftKB)	Btm (ftKB)	Date
NIOBRARA, ORIGINAL HOLE	A	24	6,540.00	6,552.00	12/1/2010
NIOBRARA, ORIGINAL HOLE	B	24	6,658.00	6,670.00	12/1/2010
CODELL, ORIGINAL HOLE	01	40	6,827.00	6,837.00	10/22/2010
<b>Total (Sum)</b>		<b>88</b>			

## Other In Hole

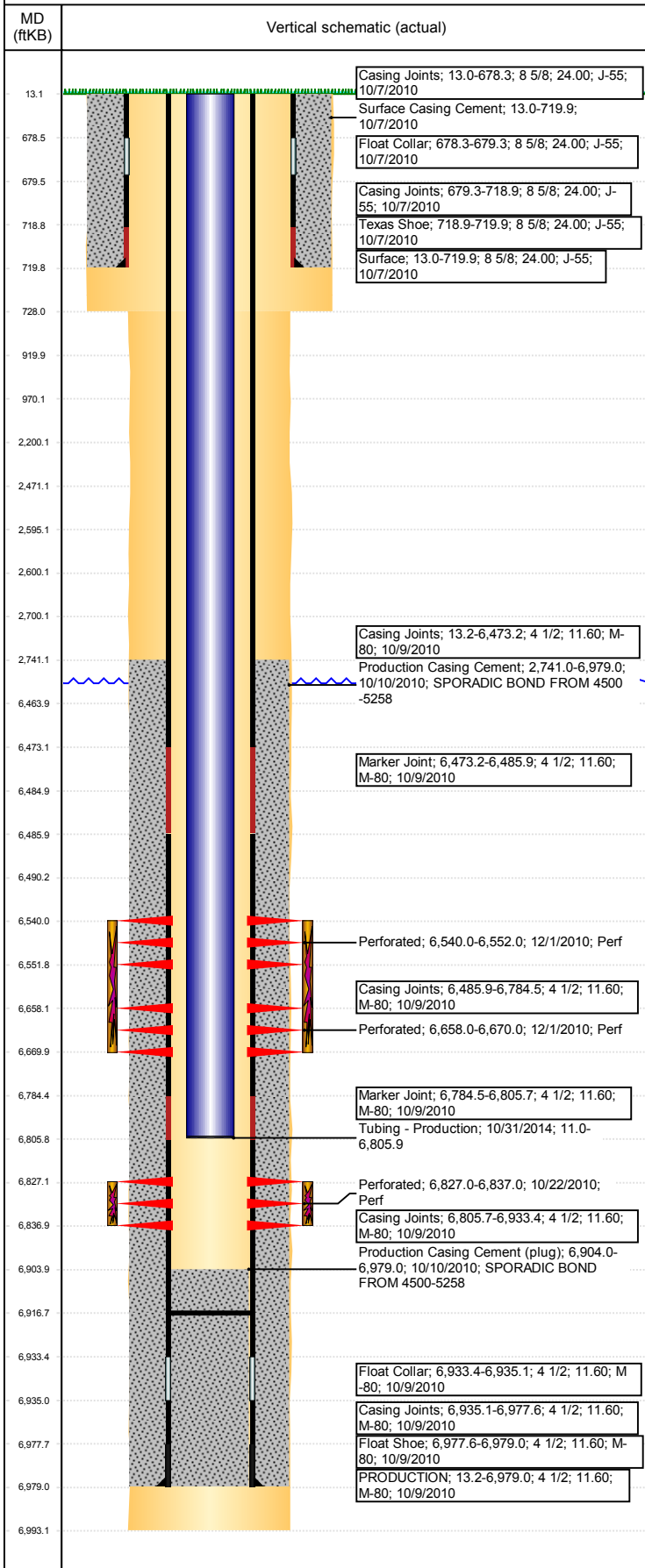
Run Date	Des	OD (in)	Top (ftKB)	Btm (ftKB)
5/10/2017	Composite Flow Through Plug			
5/10/2017	Cast Iron Bridge Plug	3.99	6,485.0	6,490.0
5/10/2017	Cement Retainer	3.99	2,595.0	2,600.0

## Logs

Date	Type	Top, MD (ftKB)	Btm, MD (ftKB)
10/9/2010	Caliper/Comp. Density/Neutron/GR/SP/ML	2,750.0	6,974.0

**Well Name: NCLP USX AA05-01**

VERTICAL - ORIGINAL HOLE, 5/31/2017 11:52:29 AM



Logs			
Date	Type	Top, MD (ftKB)	Btm, MD (ftKB)
10/9/2010	DIL/GR/SP/Caliper	719.9	6,994.0
10/20/2010	CBL/CCL/GR	1,770.0	6,903.0
Stimulation Intervals			
Bnch/Stg	Start Date	Primary Job Type	
	12/1/2010	DRILLING/COMPLETION - ORIGINAL	
Comment (CODELL): REVERSE STEP RATE RESULTS: PO - 12. NWB FRIC - 150 PSI. PERF FRIC - 224 PSI. ISIP - 2949 PSI. INC RATE T/ 22 BPM DUE TO LO. TEMP & VISC ON CHARTS NOT READING UNTIL 2 PSA STAGE DUE TO LINE FREEZES TO VAN. FLUID QUALITY CHECKED MANUALLY AND EVERYTHING LOOKED GOOD. TREATMENT WENT WELL. POST ISIP - 3091 PSI. NOLTE NEGATIVE. AVG VISC - 28.0 CP. AVG TEMP - 65.3F. AVG PH - 10.19.			
Volume Slurry Total (gal)			
146,118.00			
Treat Pressure Avg (psi)	Treat Pressure Max (psi)	Slurry Rate Avg (bbl/min)	Slurry Rate Max (bbl/min)
3,424.0	3,863.0	22.8	23.2
Bnch/Stg	Start Date	Primary Job Type	
AB	12/1/2010	DRILLING/COMPLETION - ORIGINAL	
Comment (NIOBRARA): ISIP - 2990 PSI. ONE PUMP LOST A PACKING IN 2 PSA STAGE FORCING A DROP IN RATE. STILL REMAINED AT THE DESIGNED RATE OF 50 BPM. OTHERWISE TREATMENT WENT WELL. POST ISIP - 3094 PSI. NOLTE FLAT. AVG VISC - 23.9 CP. AVG TEMP - 66.1F. AVG PH - 9.95.			
Volume Slurry Total (gal)			
186,438.00			
Treat Pressure Avg (psi)	Treat Pressure Max (psi)	Slurry Rate Avg (bbl/min)	Slurry Rate Max (bbl/min)
4,207.0	4,660.0	51.6	56.2