

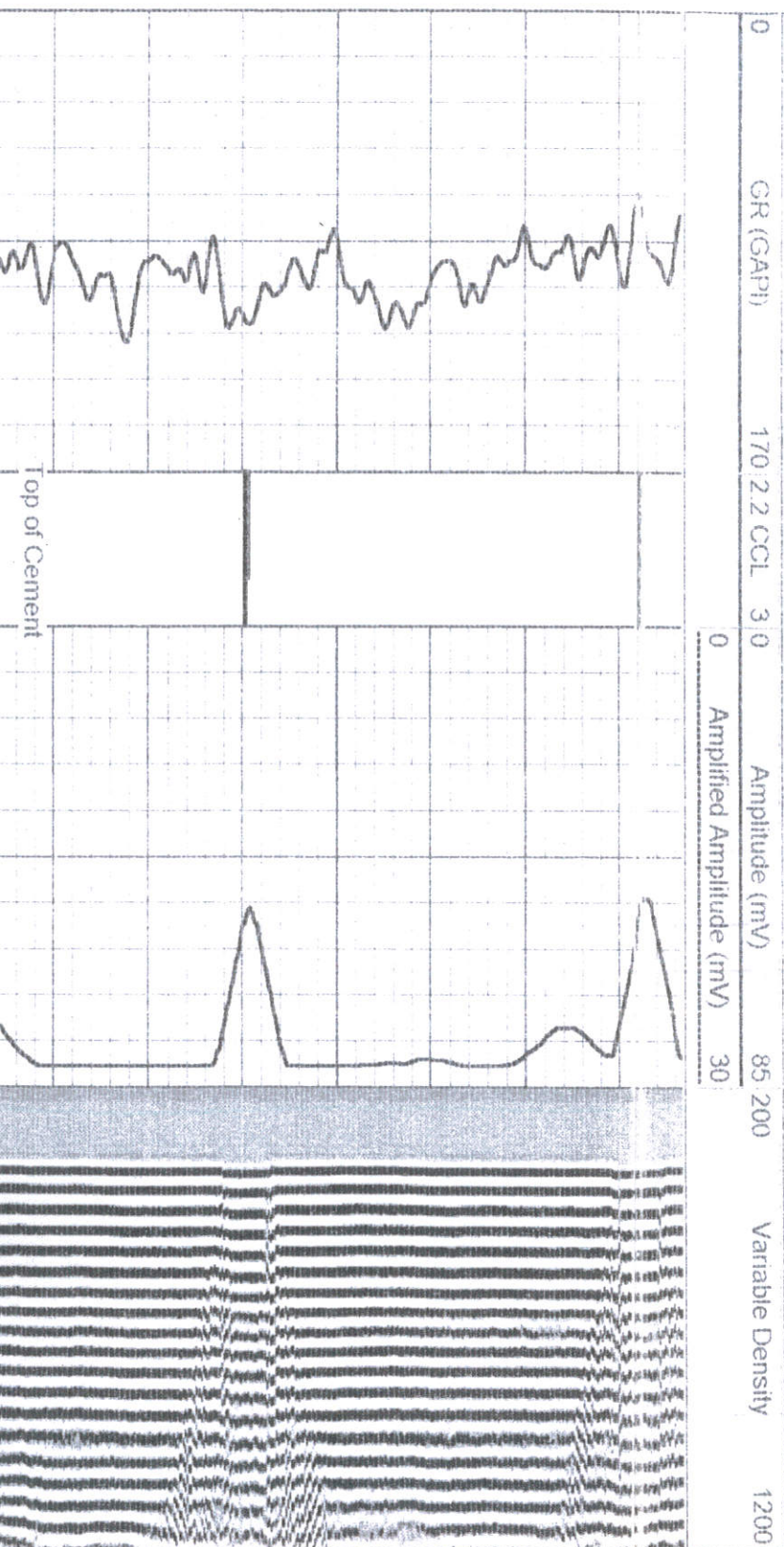
AD1 Wireline Services Ft. Morgan, CO		CEMENT BOND LOG GAMMA RAY COLLAR CORRELATION LOG	
Company COLTON LLC Well CAMENISCH UPRR 6-3 Field WATTENBERG County WELD State COLORADO		Company COLTON LLC Well CAMENISCH-UPRR 6-3 Field WATTENBERG County WELD State COLORADO	
Permanent Datum GROUND LEVEL Elevation 4679 K.B. 4691 D.F. 4690 G.L. 4679		SE NW SEC-3 TWP-4N RGE 66W PERF	
Log Measured From KELLY BUSHING Drilling Measured From KELLY BUSHING		Other Services	
Date 20-APR-2001		Run Number ONE	
Depth Drifter 7330		Depth Logger 7292	
Bottom Logged Interval 7287		Top Log Interval 7421	
Open Hole Size 7.78		Type Fluid WATER	
Density / Viscosity		Max Recorded Temp NOT RECORDED	
Estimated Cement Top 3482		Time Well Ready ROA	
Time Logged on Bottom		Equipment Number	
Location FORT MORGAN		Recorded By JIM MCKIE	
Witnessed By M3 GENE OHLMAYER		Borehole Record	
Run Number		Size To	
Casing Record		Weight From	
Production String		SURF	
Prot String		7385	
Under		Bottom	

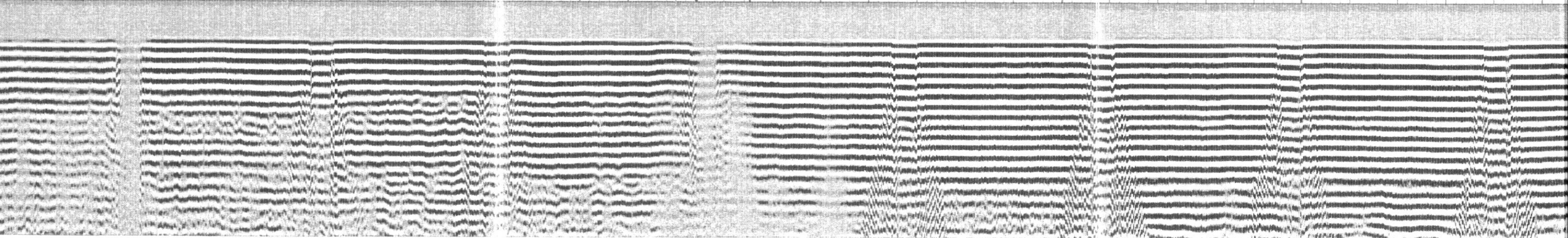
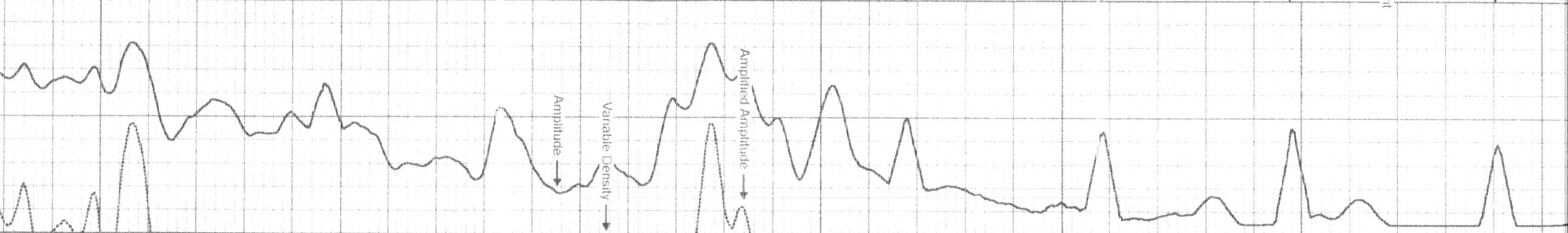
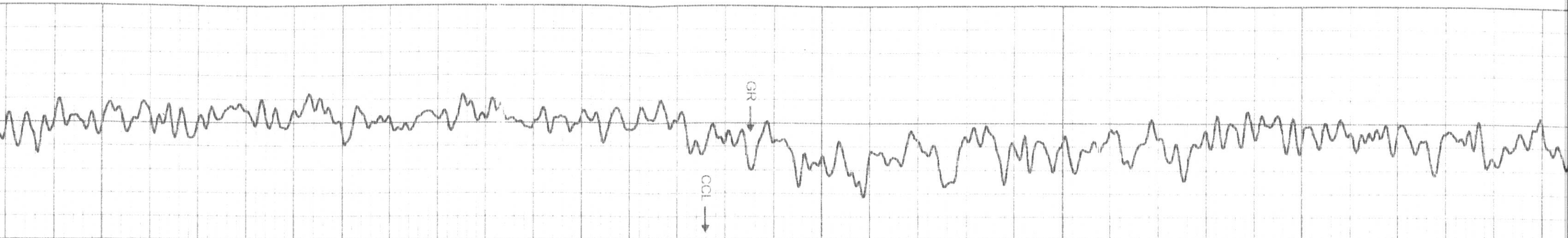
All interpretations are opinions based on inferences from electrical or other measurements and we cannot and do not guarantee the accuracy or correctness of any interpretation, and we shall not, except in the case of gross or willful negligence on our part, be liable or responsible for any loss, costs, damages, or expenses incurred or sustained by anyone resulting from any interpretation made by any of our officers, agents or employees. These interpretations are also subject to our general terms and conditions set out in our current Price Schedule.

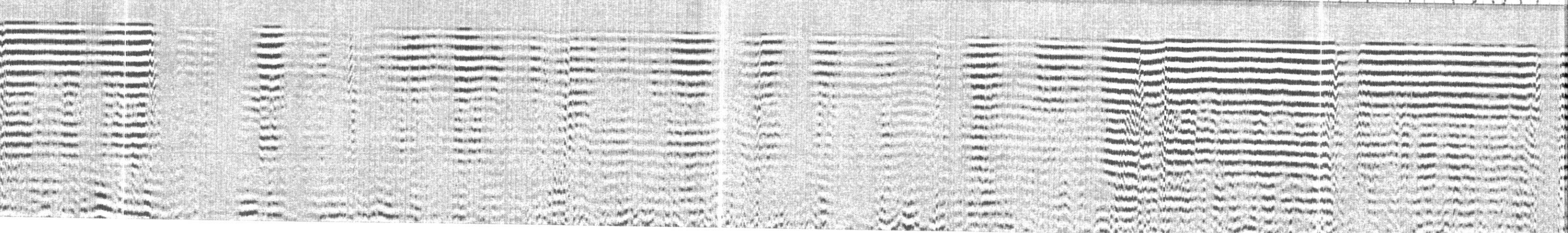
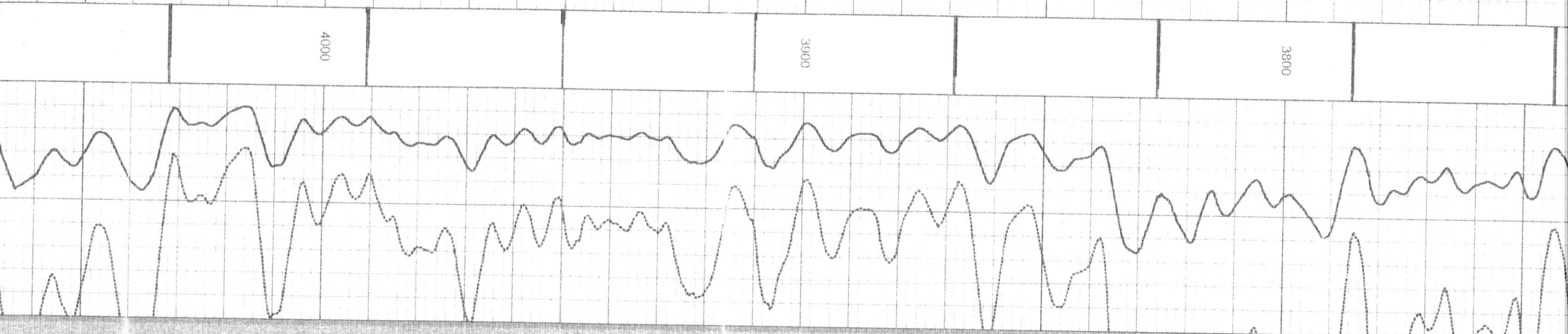
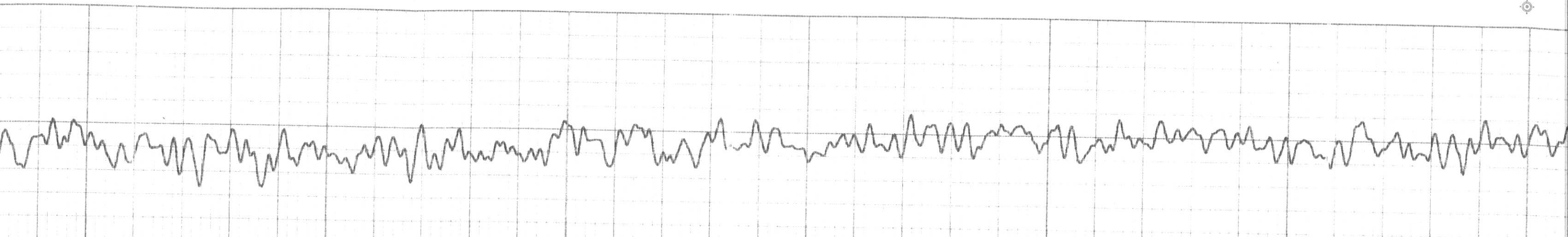
Comments

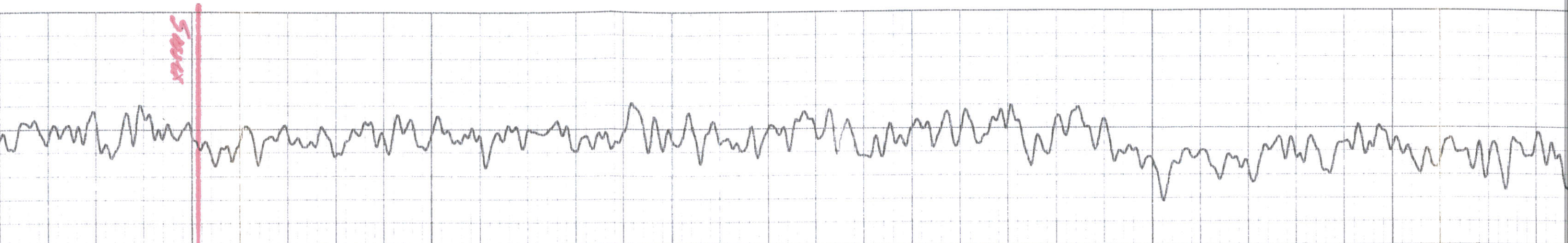
NO OPEN HOLE LOG
LOG CORRELATED TO GR/CCL RUN BEFORE PRIMARY CEMENT JOB

Database File upm63.db
Dataset Pathname pass2
Presentation Format cbix.prs
Dataset Creation Fri Apr 20 07:27:31 2001 by Log VER_5.4
Charted by Depth in Feet scaled 1 240

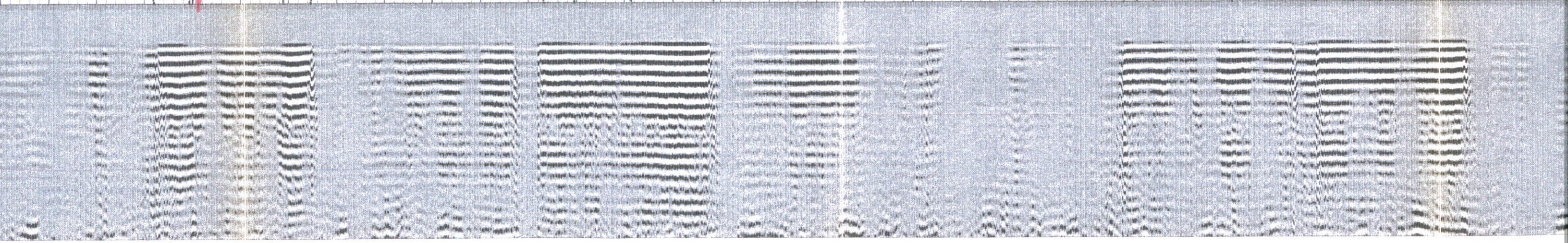
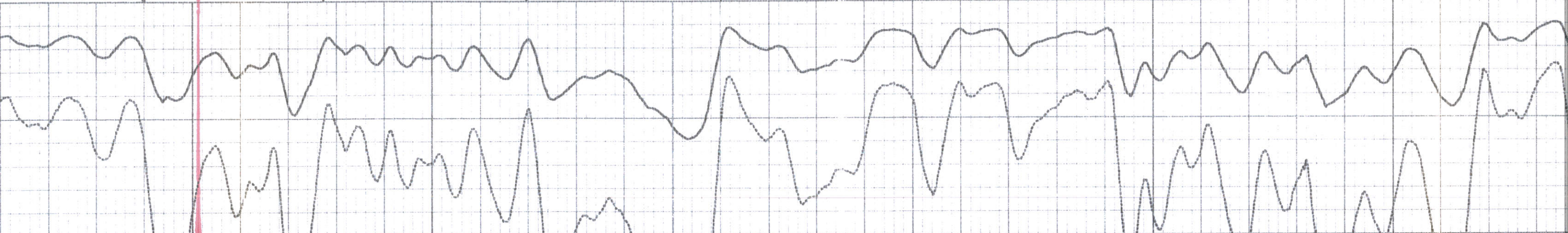


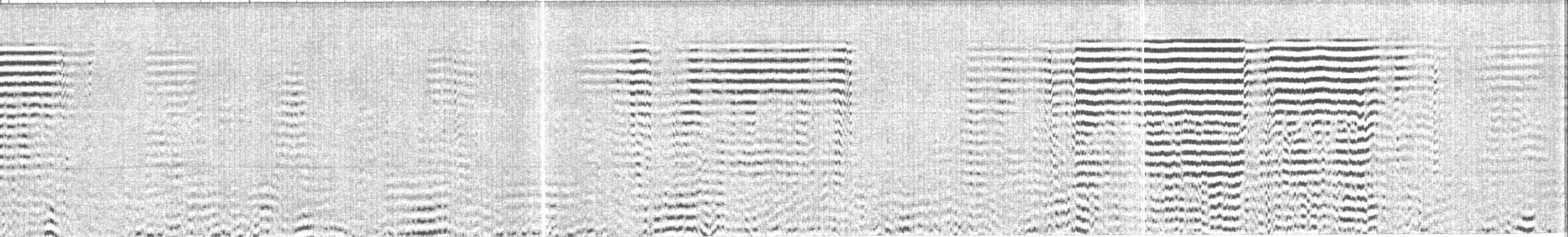
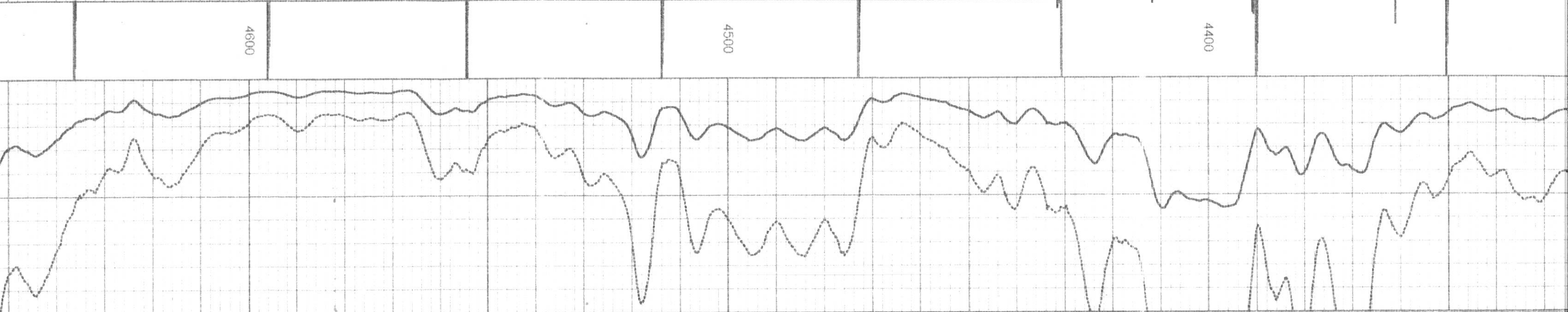
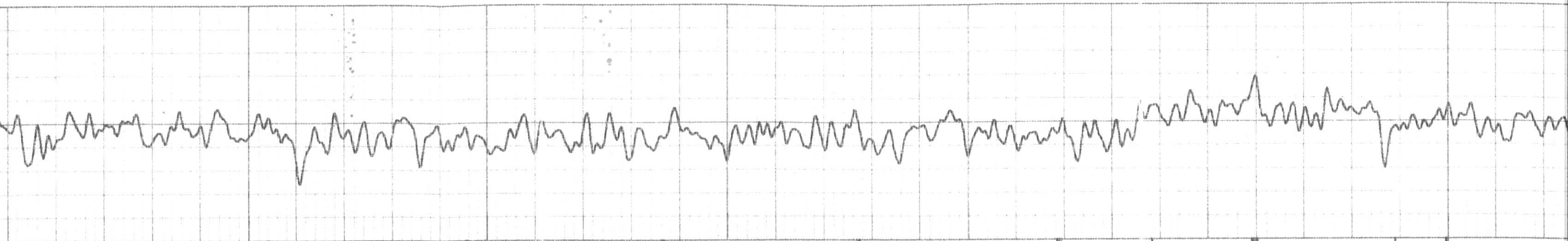


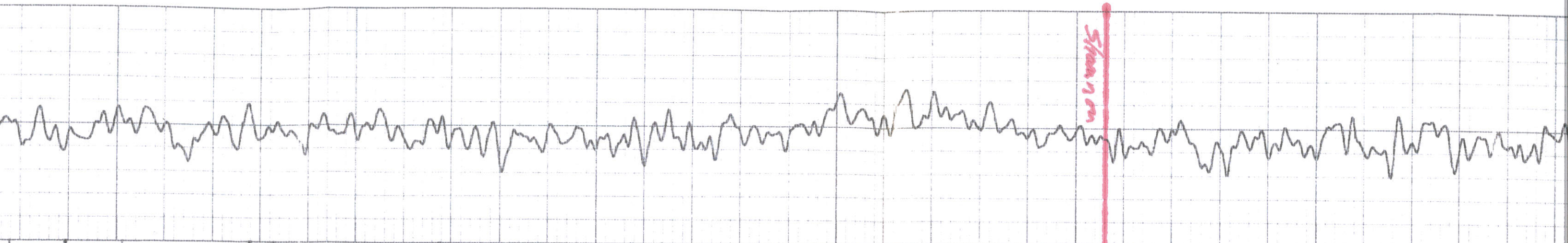




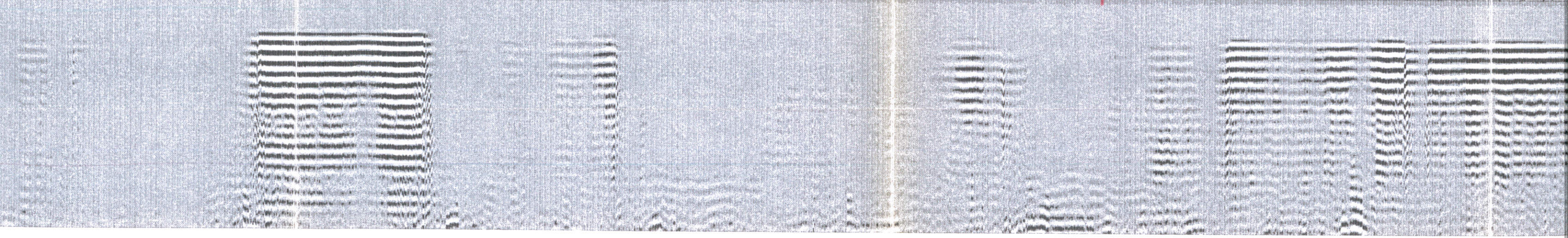
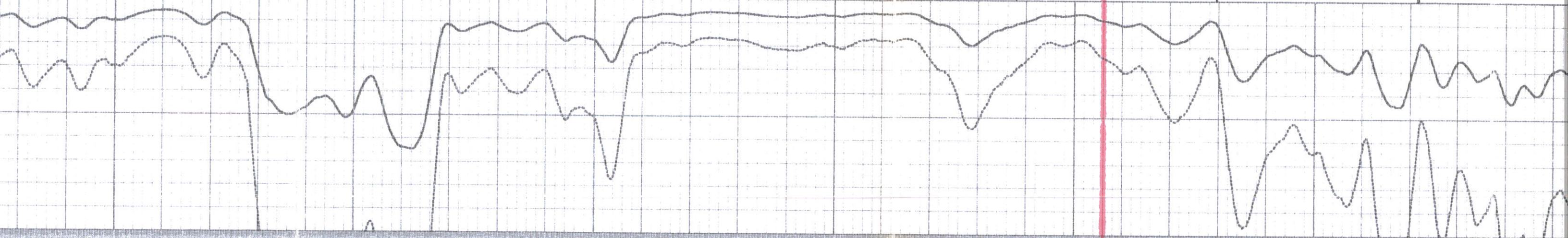
4300 4200 4100

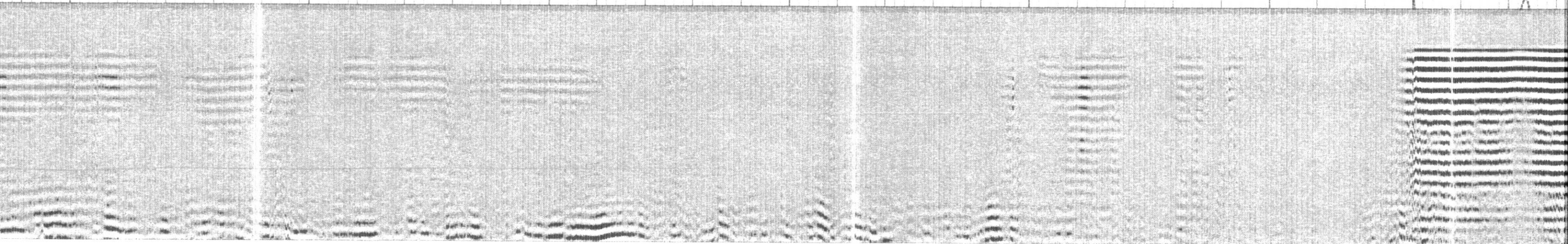
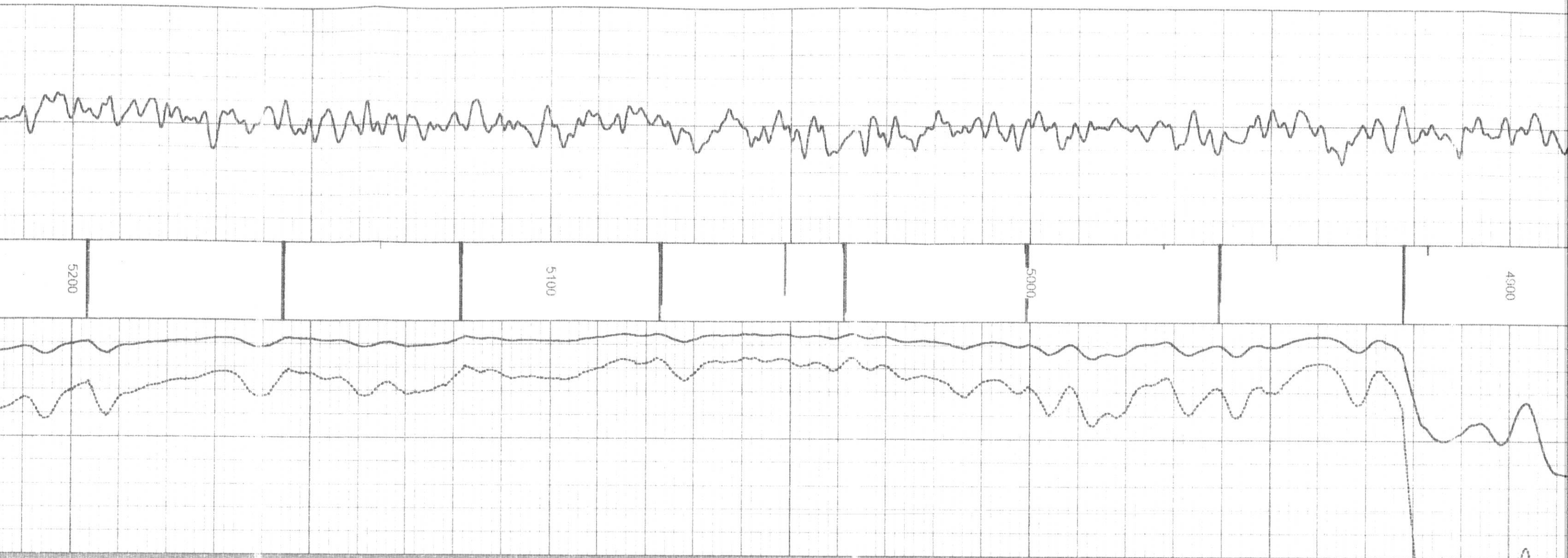


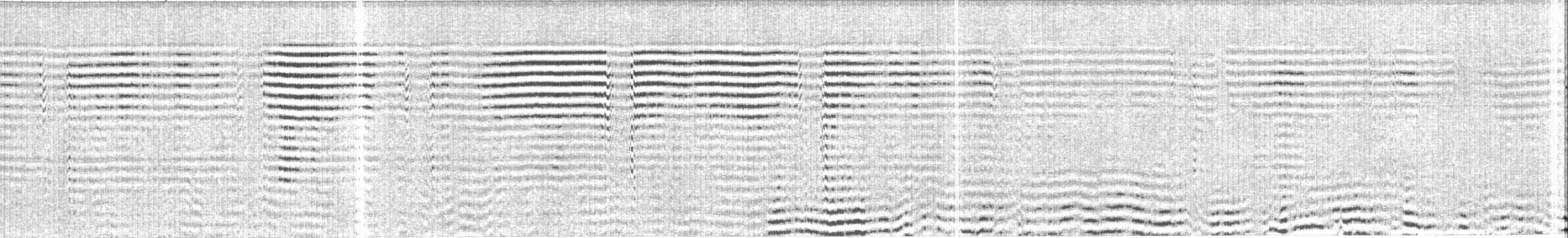
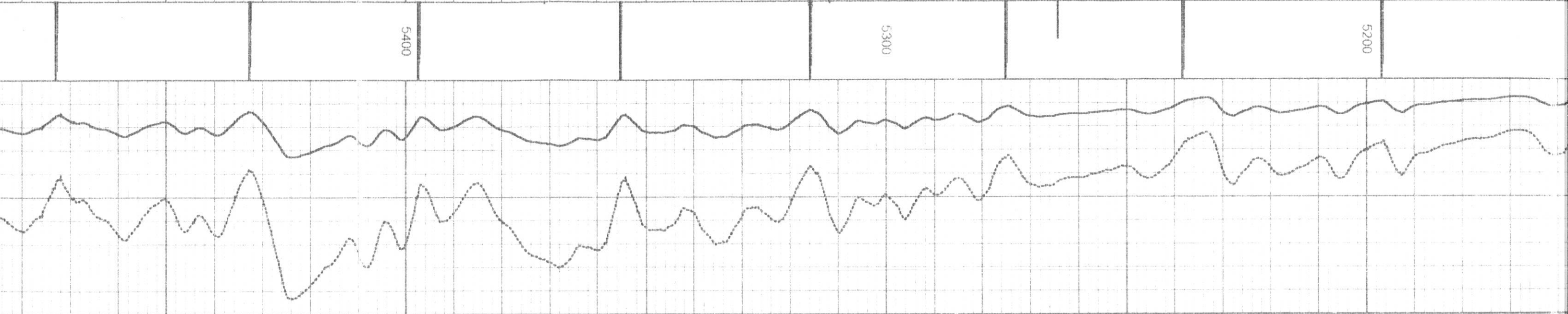
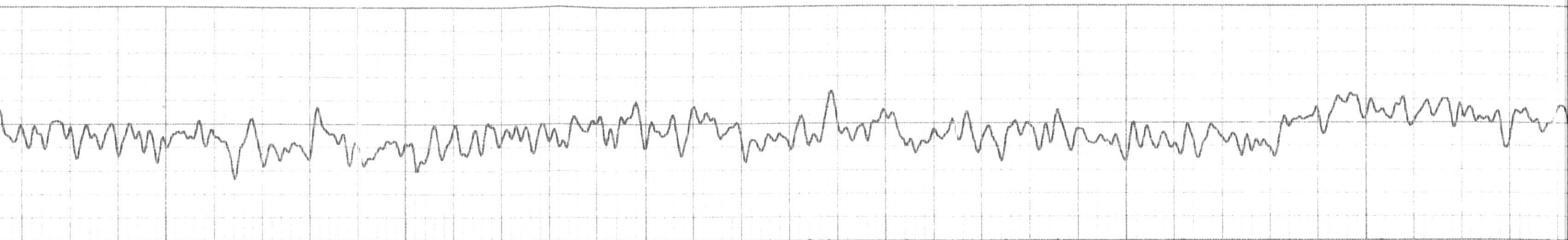


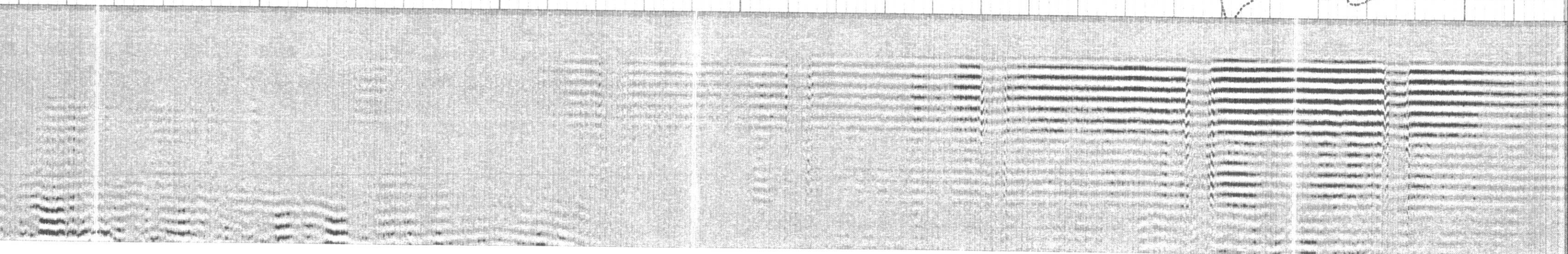
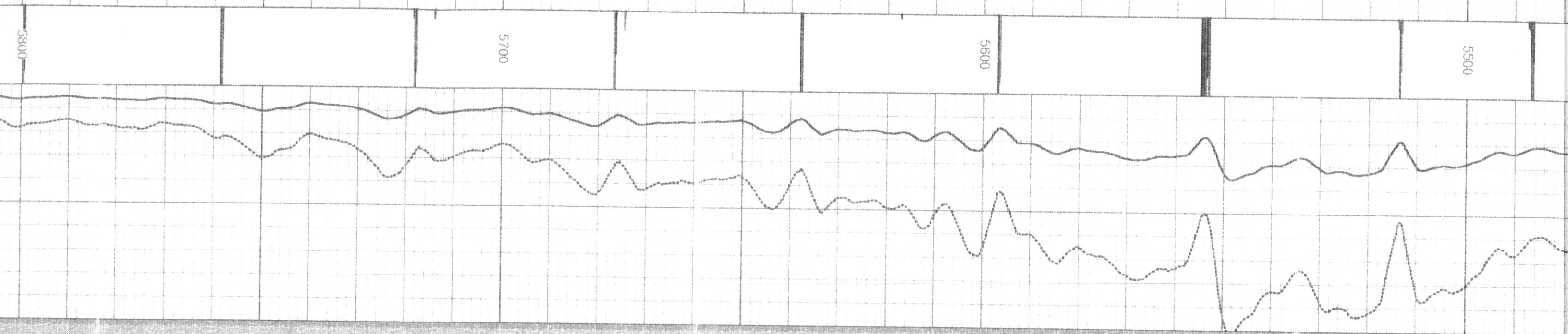
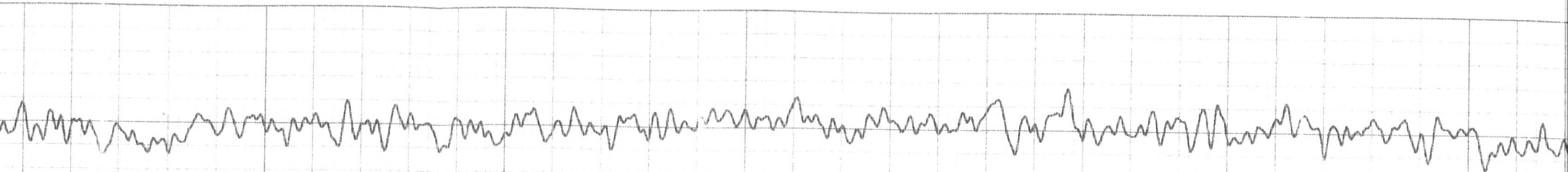


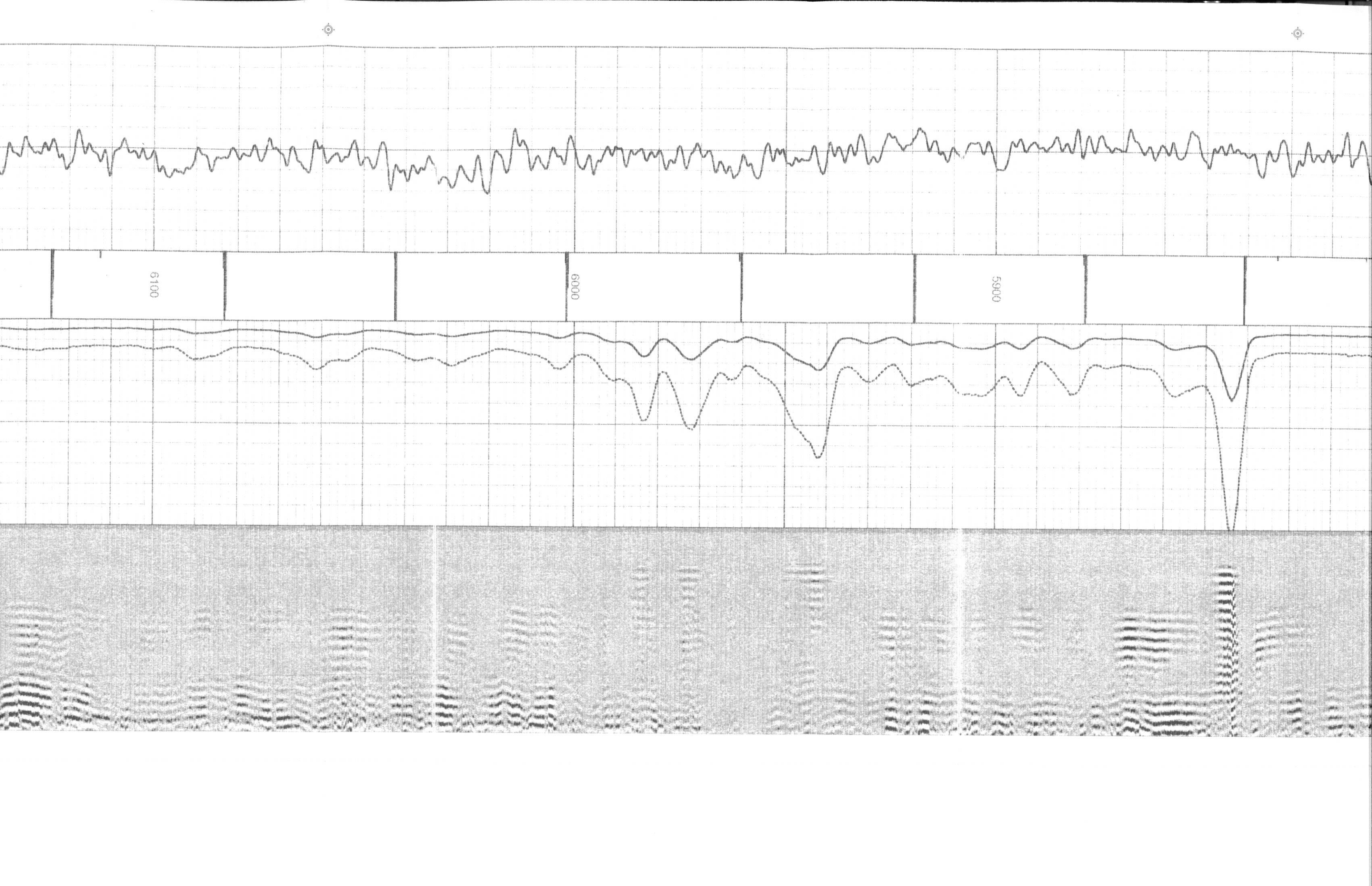
4900 4800 4700

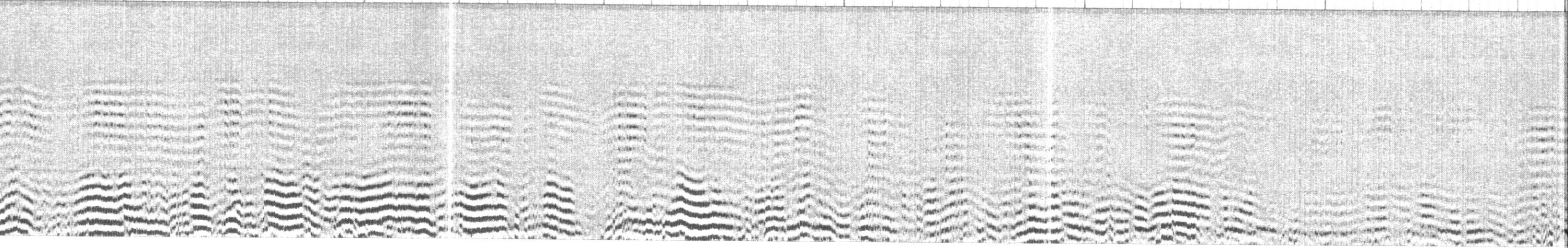
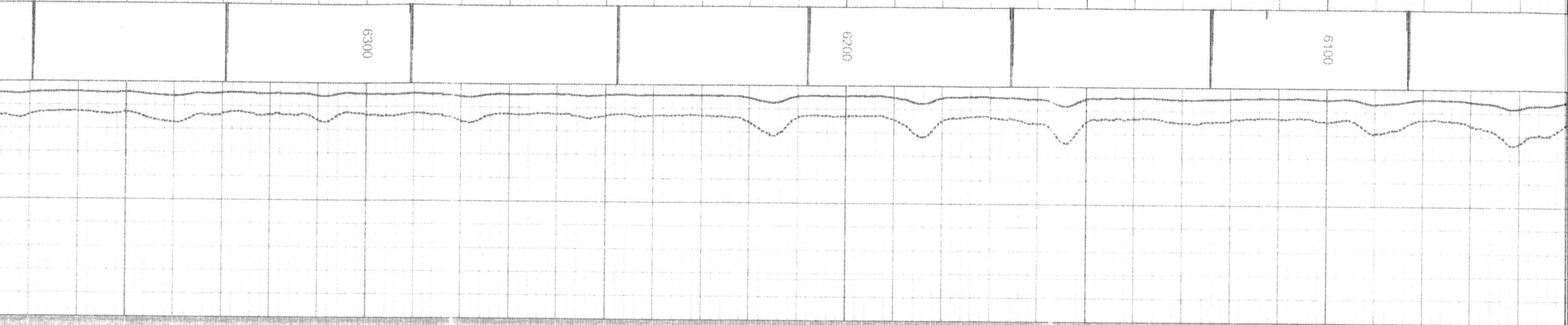
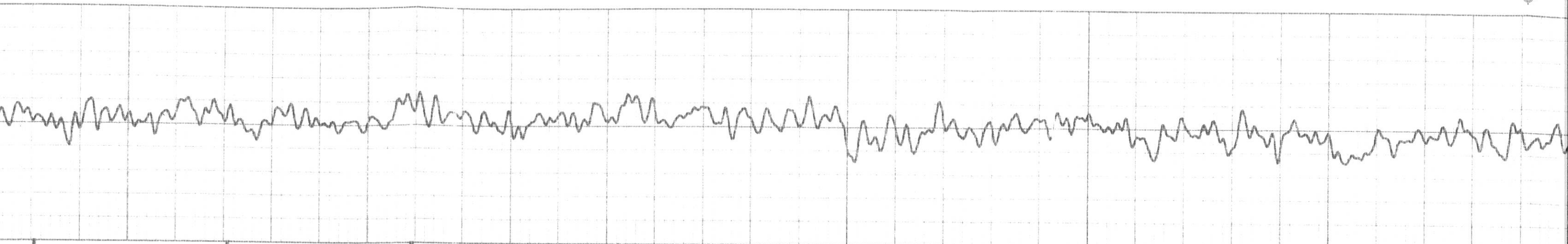


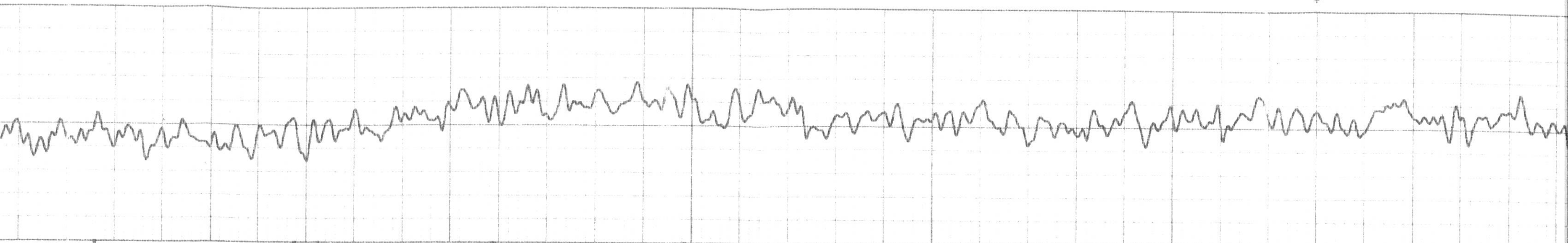












		6700			6600		6500	
--	--	------	--	--	------	--	------	--

