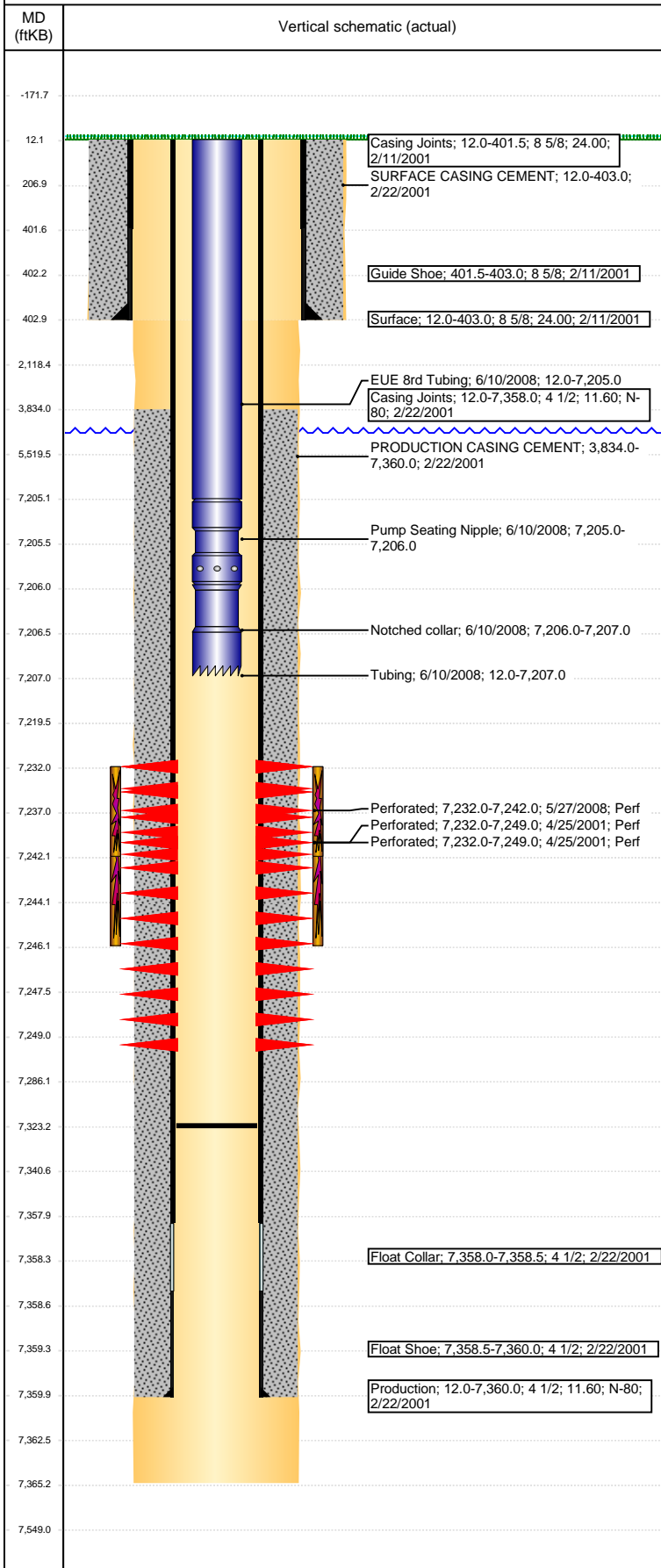


Well Name: CAMENISCH-UPRR 06-03

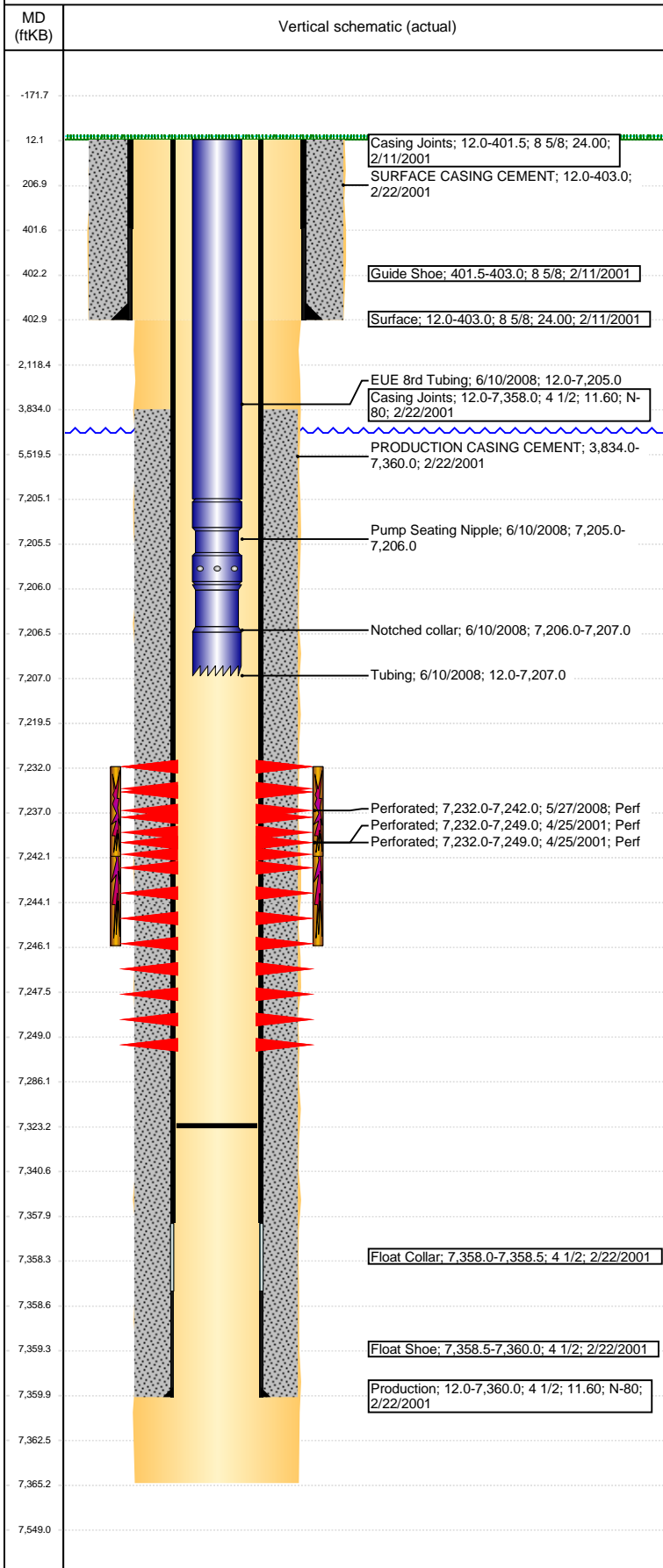
DEVIATED - ORIGINAL HOLE, 3/8/2017 9:38:50 AM



Well Header							
API 05-123-20231	Business Unit DJ BASIN		District 15		Well Config DEVIATED		
Original KB Elevation (ft) 4,691	KB - GL / MSL (ftKB) 12.00		Spud Date 2/11/2001		P & A Date		
Comment							
Directions To Well							
Congressional Location							
Quarter 3 SE	Quarter 4 NW	Section 3	Township 4	Twnshp N/S Dir N	Range 66	Range E/W Dir W	
Bottom Hole Location							
North-South Distance (ft) 2,072.0		From N or S Line FNL		East-West Distance (ft) 2,130.0		From E or W Line FWL	
Plug Back Total Depths							
Date	Depth (ftKB)	Method		Com			
4/20/2001	7,292.0	CASED HOLE LOG		DEPTH LOGGER ON CBL			
6/10/2008	7,323.0	TAG		CLEANOUT - CIRCULATE SAND			
Wellbore Sections							
Section Des		Size (in)		Act Top, MD (ftKB)		Act Btm, MD (ftKB)	
SURFACE		12 1/4		12		403	
PRODUCTION		7 7/8		403		7,365	
Zone Statuses							
Zone Name	Status Date	Status	Fluid Type	Job	Prod Method		
CODELL	4/25/2001	PR	Water	DRILLING/CO...	Flowing		
CODELL	6/14/2008	PR		RE-FRAC, 5/22...			
CODELL	7/1/2011	PR					
CODELL	7/18/2011	PR					
CODELL	11/29/2016	SI					
Casing Strings							
Surface, 403.0ftKB							
Casing Description Surface	Run Date 2/11/2001	OD (in) 8 5/8	Wt/Len (l... 24.00	Grade	Top, MD (ft... 12.0	MD (ftKB) 403.0	
Production, 7,360.0ftKB							
Casing Description Production	Run Date 2/22/2001	OD (in) 4 1/2	Wt/Len (l... 11.60	Grade N-80	Top, MD (ft... 12.0	MD (ftKB) 7,360.0	
Cement							
Description SURFACE CASING CEMENT				Top Depth (ftKB) 12.0		Bottom Depth (ftKB) 403.0	
Description PRODUCTION CASING CEMENT				Top Depth (ftKB) 3,834.0		Bottom Depth (ftKB) 7,360.0	
Tubing Strings							
Tubing Description Tubing	Run Date 6/10/2008	String... 2 3/8	ID (in) 2.00	Wt (lb/ft) 4.70	Grade J-55	Len (ft) 7,195.00	Set De...
Tubing Components							
Item Des	OD (in)	Wt (lb/ft)	Grade	Jts	Len (ft)	Btm (ftKB)	Btm (TVD) (ftKB)
EUE 8rd Tubing	2 3/8	4.70	J-55	221	7,193.00	7,205.0	
Pump Seating Nipple	2 3/8	1.10		1	1.00	7,206.0	
Notched collar	2 3/8			1	1.00	7,207.0	
Other In Hole							
Run Date	Des			OD (in)	Top (ftKB)	Btm (ftKB)	
Logs							
Date	Type				Top, MD (ftKB)	Btm, MD (ftKB)	
2/16/2001	COMPENSATED DENSITY				4,150.0	7,328.0	
2/16/2001	INDUCTION				403.0	7,348.0	
2/21/2001	COMPENSATED DENSITY				3,800.0	5,800.0	
2/22/2001	GAMMA RAY				5,760.0	7,329.0	
2/22/2001	LITHOLOGY STRIP LOG				12.0	7,330.0	
4/20/2001	CBL/CCL/GR				3,421.0	7,287.0	
9/6/2007	COMPENSATED DENSITY				403.0	7,400.0	

Well Name: CAMENISCH-UPRR 06-03

DEVIATED - ORIGINAL HOLE, 3/8/2017 9:38:53 AM



Perforation Data					
Linked Zone	Bnch/St g	Sum of Entered Shot Total	Top (ftKB)	Btm (ftKB)	Date
CODELL, ORIGINAL HOLE		28	7,232.00	7,239.00	4/20/2001
CODELL, ORIGINAL HOLE		40	7,232.00	7,242.00	5/27/2008
CODELL, ORIGINAL HOLE		20	7,241.00	7,246.00	4/20/2001
Total (Sum)		88			
Stimulation Intervals					
Start Date 4/21/2001		Primary Job Type DRILLING/COMPLETION - ORIGINAL			
Technical Result		Tech Result Details		Tech Result Note	
Comment					
Start Date 6/5/2008		Primary Job Type RE-FRAC			
Technical Result		Tech Result Details		Tech Result Note	
Comment					