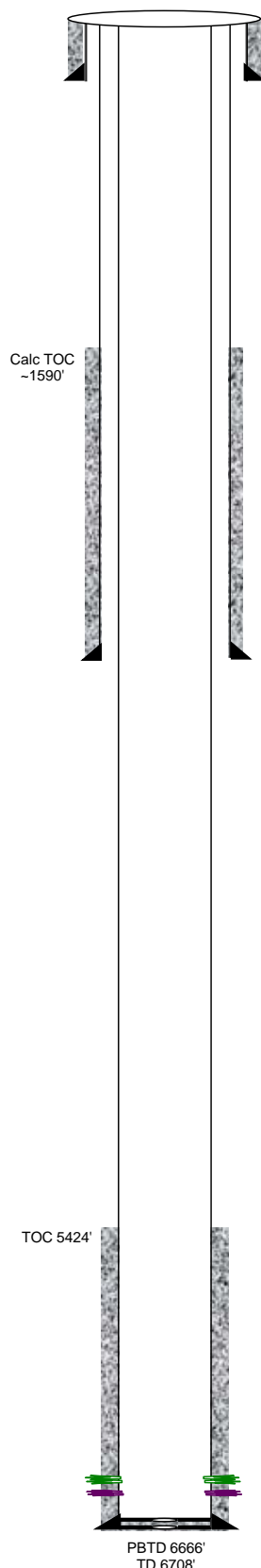




# Black Hills Plateau Production, LLC

A Black Hills Corporation Enterprise



General Well Info		Updated:	6/24/2008 hll
Well Name:	Winter Flats 1-16-99	Field:	Bronco Flats
Srf Location:	SWNE 16 9S 99W 6PM	County:	Mesa
Lease # (BLM):	C-12649-A	State:	Colorado
API #:	05-077-08457	Spud Date:	1/19/1982
GL Elev:	6055'	TD Date:	2/16/1982
KB Elev:	6070'	Compl Date:	4/27/1982
Formation Tops			
Zone	Depth	Zone	Depth
ROLLINS	1770'	CEDAR MTN	6558'
COZZETTE	1921'	MORRISON	6637'
CORCORAN	2152'		
MANCOS	4752'		
DAKOTA	6432'		

## Surface casing (1/20/82):

10 3/4" (7jts) 40.5# K55 ST&C set @ 306' (14 3/4" hole)  
300sx Reg 3% CaCl – good circ  
TOC @ srf

## Intermediate casing (1/29/82):

7" (75jts) 23# K55 ST&C set @ 2838', FC 2824' (8 3/4" hole)  
150sx Reg 2% CaCl  
TOC @ ~1590' (calc)

## Production casing (2/15/82):

4 1/2" (163jts) 10.5# K55 ST&C set @ 6708', FC 6666' (6 1/4" hole)  
150sx Class H, 1/4# Celloflake, 1/2% NFR  
TOC @ 5424" (per CBL 4/14/82)

Production tubing : None

**DKTA (4/16/82)** 6493, 6495, 6509, 6524, 6526, 6542, 6544' (1spf, 7 holes)

**CDMTN (4/16/82)** 6562, 6564, 6566, 6568, 6570, 6572, 6629, 6631' (1spf, 8 holes)

- ♦ (4/17/82) Acidize DK/CM w/1800gal 7 1/2% acid & bs – form brk dn @2500psi & 1.1bpm, very little ball action  
MP 4100, AP 3550, MR 6.1bpm, AR 4.2bpm  
ISIP 1500, 15min 600
- ♦ (4/27/82) Frac DK/CM w/142,500# 20/40m, 600scf/bbl CO2 & 86850gal Versagel  
MP 4220, AP 3800, MR 30.4bpm, AR 30bpm  
ISIP 2650, 15min 1750

**Obtain static bottom-hole pressure. Note fluid level, if possible.**

RU SL unit. RIH w/tandem electronic bhp bombs making 3-5 minute gradient stops at 2412', 3912', 4912', 5912', 6412', 6562'- mid perf (10 min). Obtain field reading. POH. Notify engineering of results. RDMO SL.