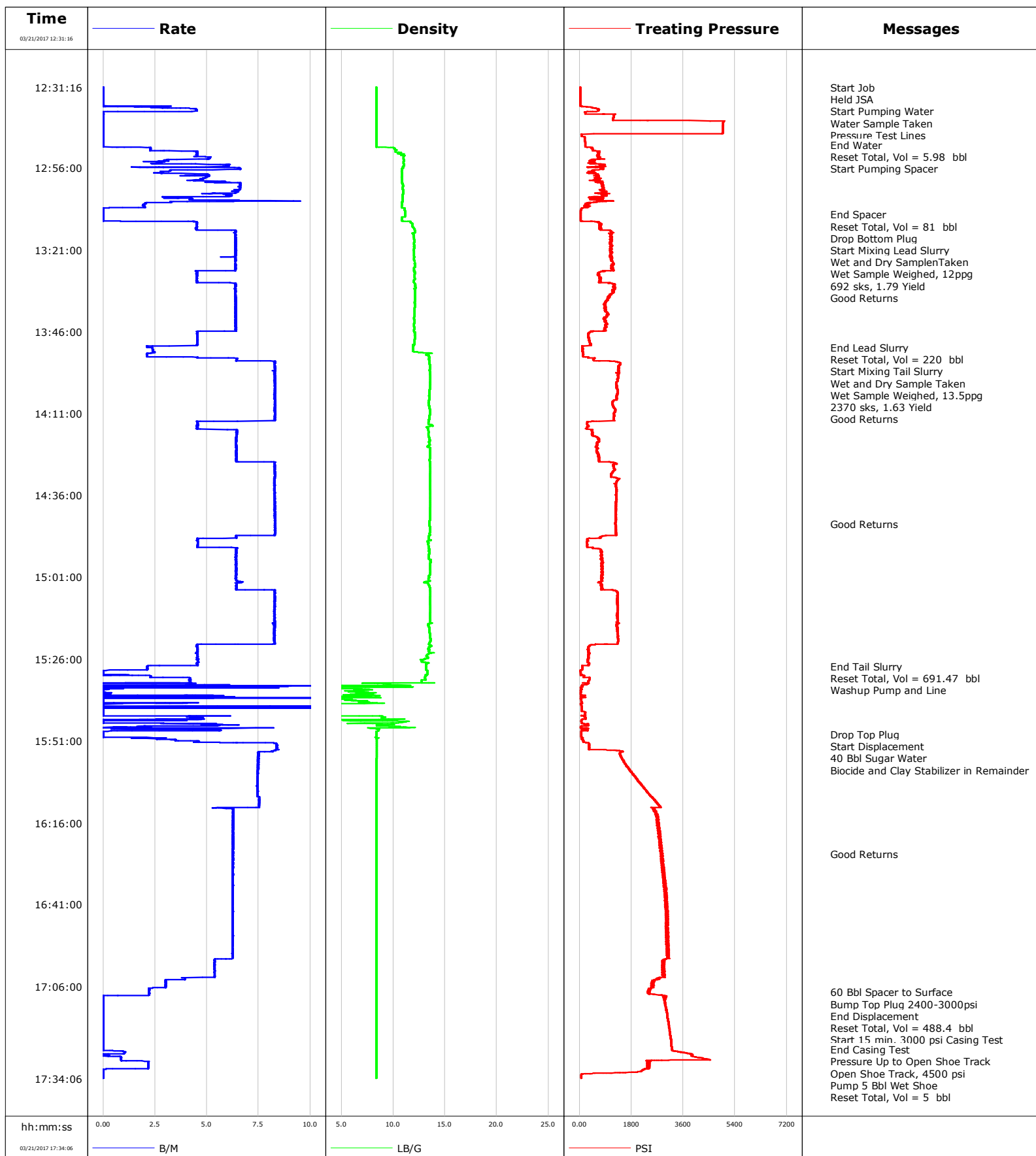


**Well** Hopper State 9N-34SLHZ  
**Field** Wattenberg  
**Engineer** Ryan Drilling/Ken Sovereign  
**Country** United States

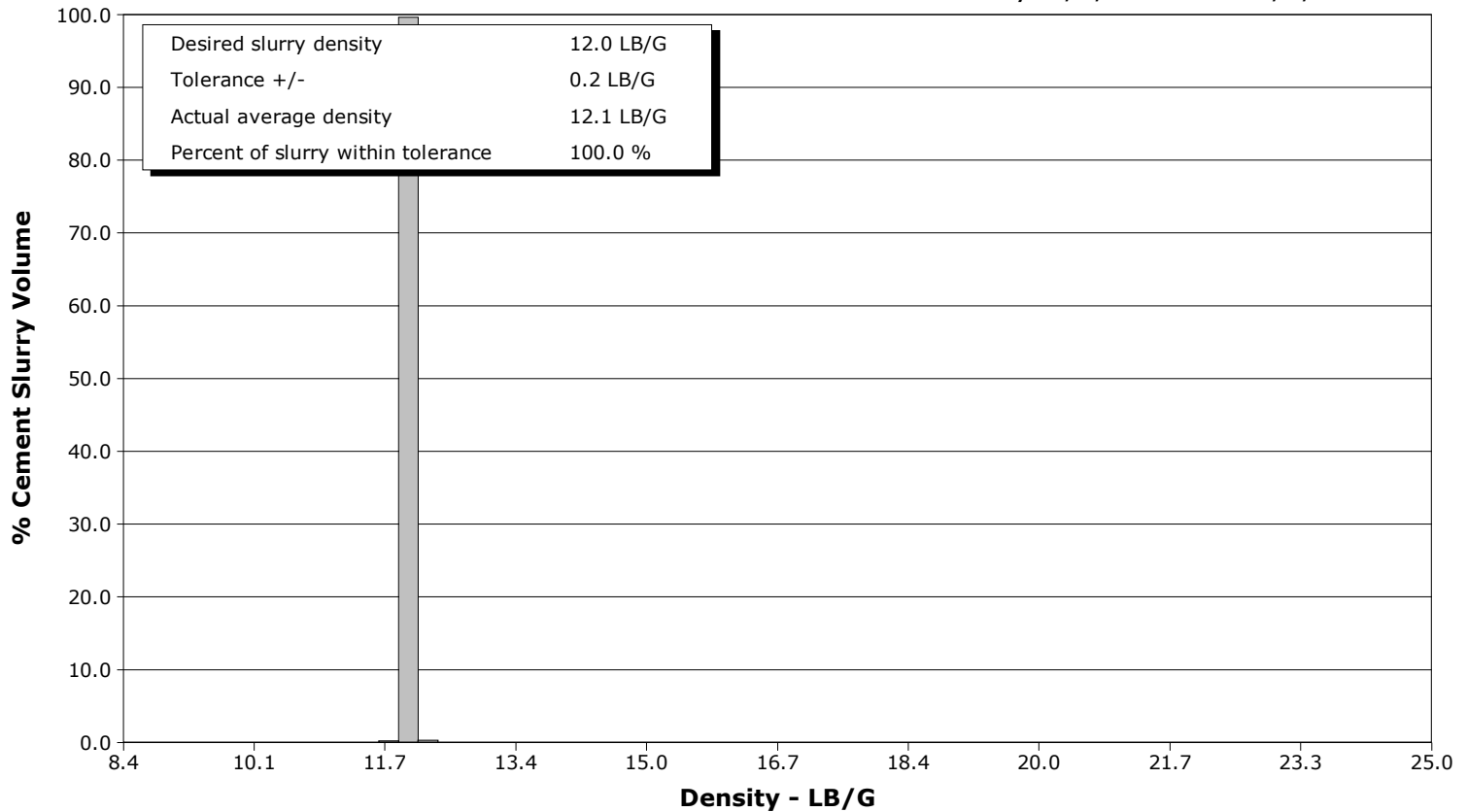
**Client** Anadarko  
**SIR No.** DMBW-00776  
**Job Type** 5.5" Production  
**Job Date** 03-21-2017



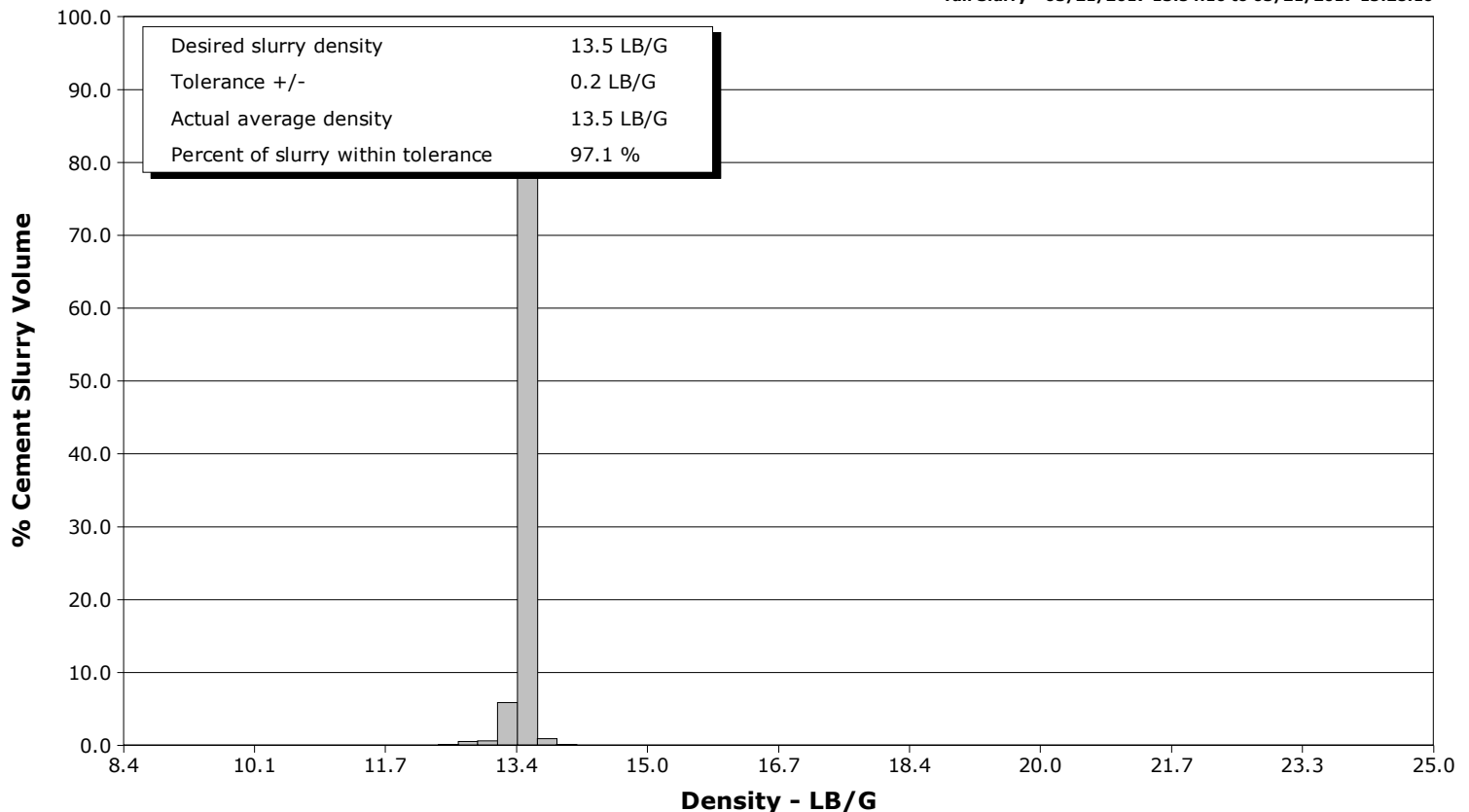
**Well** Hopper State 9N-34SLHZ  
**Field** Wattenberg  
**Engineer** Ryan Drilling/Ken Sovereign  
**Country** United States

**Client** Anadarko  
**SIR No.** DMBW-00776  
**Job Type** 5.5" Production  
**Job Date** 03-21-2017

**Lead Slurry - 03/21/2017 13:14:37 to 03/21/2017 13:50:46**



**Tail Slurry - 03/21/2017 13:54:10 to 03/21/2017 15:28:10**



# Cementing Service Report

				Customer Anadarko			Job Number DMBW-00776				
Well Hopper State 9N-34SLHZ			Location (legal) CWY			Schlumberger Location CWY			Job Start Mar/21/2017		
Field Wattenberg		Formation Name/Type Shale		Deviation 90 deg		Bit Size 8.5 in		Well MD 22086.0 ft		Well TVD 7230.0 ft	
County Weld		State/Province Colorado		BHP psi		BHST 227 degF		BHCT 227 degF		Pore Press. Gradient lb/gal	
Well Master 0631676653		API/UWI									
Rig Name Precision 564		Drilled For Oil & Gas		Service Via Land		Casing/Liner					
						Depth, ft		Size, in		Weight, lb/ft	
										Grade	
										Thread	
Offshore Zone		Well Class New		Well Type Development		2327.0		9.6		36.0	
						22076.0		5.5		20.0	
										j55	
										p110	
										lrc	
Drilling Fluid Type		Max. Density lb/gal		Plastic Viscosity cP		Tubing/Drill Pipe					
						T/D		Depth, ft		Size, in	
										Weight, lb/ft	
										Grade	
										Thread	
Service Line Cementing		Job Type 5.5" Production									
Max. Allowed Tub. Press psi		Max. Allowed Ann. Press psi		WH Connection Double Cement head		Perforations/Open Hole					
						Top, ft		Bottom, ft		shot/ft	
										No. of Shots	
										Total Interval	
						ft		ft		ft	
						ft		ft		Diameter	
						ft		ft		in	
						Treat Down Casing		Displacement 488.0 bbl		Packer Type	
										Packer Depth	
						ft					
						Tubing Vol. bbl		Casing Vol. 488.4 bbl		Annular Vol. 108.0 bbl	
										Openhole Vol. 809.0 bbl	
Casing/Tubing Secured <input checked="" type="checkbox"/>		1 Hole Vol. Circulated prior to Cement <input checked="" type="checkbox"/>				Casing Tools		Squeeze Job			
Lift Pressure 2400 psi						Shoe Type Float		Squeeze Type			
Pipe Rotated <input type="checkbox"/>		Pipe Reciprocated <input type="checkbox"/>				Shoe Depth 22076.0 ft		Tool Type			
No. Centralizers		Top Plugs 1		Bottom Plugs 1		Stage Tool Type		Tool Depth ft			
Cement Head Type Double						Stage Tool Depth ft		Tail Pipe Size in			
Job Scheduled For Mar/21/2017 02:00		Arrived on Location Mar/21/2017 02:00		Leave Location Mar/22/2017 18:30		Collar Type Float		Tail Pipe Depth ft			
						Collar Depth 22022.0 ft		Sqz. Total Vol. bbl			
Date	Time 24-hr clock	Treating Pressure PSI	Flow Rate B/M	Density LB/G	Volume BBL	Message					
03/21/2017	12:31:16	21	0.0	8.36	0.0	Started Acquisition					
03/21/2017	12:31:18	20	0.0	8.36	0.0	Held JSA					
03/21/2017	12:31:27	21	0.0	8.36	0.0	Start Pumping Water					
03/21/2017	12:31:42	21	0.0	8.36	0.0	Pressure Test Lines					
03/21/2017	12:32:16	21	0.0	8.36	0.0						
03/21/2017	12:33:16	21	0.0	8.36	0.0						
03/21/2017	12:34:16	22	0.0	8.36	0.0						
03/21/2017	12:35:16	21	0.0	8.36	0.0						
03/21/2017	12:36:16	25	0.0	8.36	0.0						
03/21/2017	12:37:16	182	1.7	8.36	0.3						
03/21/2017	12:38:16	644	4.5	8.36	3.8						
03/21/2017	12:39:16	193	0.0	8.36	0.0						
03/21/2017	12:40:16	1178	0.0	8.36	0.0						
03/21/2017	12:41:16	1169	0.0	8.36	0.0						
03/21/2017	12:42:16	4987	0.0	8.36	0.0						
03/21/2017	12:43:16	4978	0.0	8.36	0.0						
03/21/2017	12:44:16	4974	0.0	8.36	0.0						
03/21/2017	12:45:16	4972	0.0	8.36	0.0						
03/21/2017	12:46:16	74	0.0	8.36	0.0						
03/21/2017	12:47:16	184	0.0	8.36	0.0						
03/21/2017	12:48:16	192	0.0	8.36	0.0						

Well			Field	Job Start		Customer	Job Number	
Hopper State 9N-34SLHZ			Wattenberg		Mar/21/2017		Anadarko	DMBW-00776
Date	Time 24-hr clock	Treating Pressure PSI	Flow Rate B/M	Density LB/G	Volume BBL	Message		
03/21/2017	12:48:52	194	0.0	8.36	0.0	Reset Total, Vol = 5.98 bbl		
03/21/2017	12:48:54	194	0.0	8.37	0.0	Start Pumping Spacer		
03/21/2017	12:49:16	194	0.0	8.36	0.0			
03/21/2017	12:50:16	466	2.3	10.15	1.4			
03/21/2017	12:51:16	622	4.5	10.79	4.8			
03/21/2017	12:52:16	668	4.5	11.07	9.3			
03/21/2017	12:53:16	621	5.1	11.02	14.2			
03/21/2017	12:54:16	452	2.7	11.02	17.3			
03/21/2017	12:55:16	708	6.0	11.04	21.4			
03/21/2017	12:56:16	803	6.6	10.87	26.8			
03/21/2017	12:57:16	303	2.8	10.84	30.9			
03/21/2017	12:58:16	552	4.4	10.85	34.9			
03/21/2017	12:59:16	557	4.8	10.86	39.8			
03/21/2017	13:00:16	692	5.8	10.86	44.7			
03/21/2017	13:01:16	823	6.6	10.94	51.1			
03/21/2017	13:02:16	792	6.6	10.93	57.7			
03/21/2017	13:03:16	871	6.5	10.95	64.2			
03/21/2017	13:04:16	902	6.1	10.92	70.2			
03/21/2017	13:05:16	493	4.3	10.91	75.0			
03/21/2017	13:06:16	655	3.3	10.90	80.4			
03/21/2017	13:07:16	238	2.0	10.85	82.8			
03/21/2017	13:08:16	92	0.0	11.08	84.5			
03/21/2017	13:09:16	48	0.0	11.14	84.5			
03/21/2017	13:10:13	44	0.0	11.16	84.5	End Spacer		
03/21/2017	13:10:15	44	0.0	11.17	84.5	Reset Total, Vol = 81 bbl		
03/21/2017	13:10:16	44	0.0	11.17	84.5			
03/21/2017	13:10:17	43	0.0	11.16	84.5	Drop Bottom Plug		
03/21/2017	13:11:16	42	0.0	10.84	84.5			
03/21/2017	13:12:16	129	2.8	11.22	84.5			
03/21/2017	13:13:16	686	4.5	11.86	89.0			
03/21/2017	13:14:16	697	4.5	11.97	93.5			
03/21/2017	13:14:37	698	4.5	12.04	95.1	Start Mixing Lead Slurry		
03/21/2017	13:14:38	701	4.5	12.05	95.1	Wet and Dry SampleTaken		
03/21/2017	13:14:39	701	4.5	12.05	95.2	Wet Sample Weighed, 12ppg		
03/21/2017	13:15:16	1105	6.4	12.09	98.5			
03/21/2017	13:16:16	1058	6.4	11.94	104.9			
03/21/2017	13:17:16	1081	6.4	12.01	111.3			
03/21/2017	13:18:16	1121	6.4	12.06	117.6			
03/21/2017	13:19:16	1100	6.4	12.01	124.0			
03/21/2017	13:20:16	1111	6.4	12.04	130.4			
03/21/2017	13:21:16	1080	6.4	11.99	136.8			
03/21/2017	13:22:16	1100	6.4	12.02	143.2			
03/21/2017	13:23:16	1141	6.4	12.03	149.5			
03/21/2017	13:24:16	1138	6.4	12.04	155.9			
03/21/2017	13:25:16	1203	6.4	12.07	162.3			
03/21/2017	13:26:16	1129	6.4	12.12	168.7			
03/21/2017	13:27:16	1169	6.4	12.03	175.0			
03/21/2017	13:28:16	669	4.5	12.09	179.9			
03/21/2017	13:29:16	689	4.5	12.05	184.4			
03/21/2017	13:30:16	713	4.5	12.01	188.9			
03/21/2017	13:31:16	1179	6.4	12.08	193.7			
03/21/2017	13:32:16	1181	6.4	12.14	200.1			
03/21/2017	13:33:16	1176	6.4	12.09	206.5			
03/21/2017	13:34:16	1167	6.4	12.12	212.9			

Well			Field	Job Start		Customer		Job Number	
Hopper State 9N-34SLHZ			Wattenberg		Mar/21/2017		Anadarko		DMBW-00776
Date	Time 24-hr clock	Treating Pressure PSI	Flow Rate B/M	Density LB/G	Volume BBL	Message			
03/21/2017	13:36:16	944	6.4	12.12	225.6				
03/21/2017	13:37:16	884	6.4	12.08	232.0				
03/21/2017	13:38:16	901	6.4	12.08	238.4				
03/21/2017	13:39:16	894	6.4	12.07	244.8				
03/21/2017	13:40:16	975	6.4	12.06	251.2				
03/21/2017	13:41:16	938	6.4	12.04	257.6				
03/21/2017	13:42:16	873	6.4	12.03	264.0				
03/21/2017	13:43:16	899	6.4	12.04	270.4				
03/21/2017	13:44:16	925	6.4	12.03	276.8				
03/21/2017	13:45:16	886	6.4	12.03	283.2				
03/21/2017	13:46:16	338	4.5	12.05	288.9				
03/21/2017	13:47:16	299	4.5	12.09	293.4				
03/21/2017	13:48:16	322	4.5	12.08	298.0				
03/21/2017	13:49:16	364	4.5	12.08	302.5				
03/21/2017	13:50:16	377	4.5	11.96	307.0				
03/21/2017	13:50:46	91	2.1	11.92	308.2	End Lead Slurry			
03/21/2017	13:50:49	100	2.2	11.92	308.3	Reset Total, Vol = 220 bbl			
03/21/2017	13:51:16	103	2.4	11.93	309.4				
03/21/2017	13:52:16	107	2.5	12.43	311.8				
03/21/2017	13:53:16	130	2.1	13.44	314.0				
03/21/2017	13:54:10	502	6.5	13.47	317.2	Start Mixing Tail Slurry			
03/21/2017	13:54:11	500	6.5	13.47	317.3	Wet and Dry Sample Taken			
03/21/2017	13:54:12	518	6.5	13.47	317.4	Wet Sample Weighed, 13.5ppg			
03/21/2017	13:54:13	518	6.5	13.47	317.6	Good Returns			
03/21/2017	13:54:16	511	6.5	13.46	317.9				
03/21/2017	13:55:16	1338	8.3	13.51	324.8				
03/21/2017	13:56:16	1394	8.3	13.52	333.1				
03/21/2017	13:57:16	1345	8.3	13.52	341.4				
03/21/2017	13:58:16	1363	8.3	13.54	349.7				
03/21/2017	13:59:16	1340	8.3	13.57	358.0				
03/21/2017	14:00:16	1330	8.3	13.57	366.2				
03/21/2017	14:01:16	1324	8.3	13.57	374.5				
03/21/2017	14:02:16	1295	8.3	13.57	382.8				
03/21/2017	14:03:16	1296	8.3	13.53	391.1				
03/21/2017	14:04:16	1316	8.3	13.50	399.4				
03/21/2017	14:05:16	1305	8.3	13.48	407.6				
03/21/2017	14:06:16	1295	8.3	13.48	415.9				
03/21/2017	14:07:16	1160	8.3	13.44	424.2				
03/21/2017	14:08:16	1149	8.3	13.45	432.5				
03/21/2017	14:09:16	1217	8.3	13.51	440.8				
03/21/2017	14:10:16	1241	8.3	13.55	449.1				
03/21/2017	14:11:16	1197	8.3	13.52	457.3				
03/21/2017	14:12:16	1195	8.3	13.51	465.6				
03/21/2017	14:13:16	1211	8.2	13.47	473.9				
03/21/2017	14:14:16	270	4.6	13.41	478.6				
03/21/2017	14:15:16	251	4.6	13.25	483.2				
03/21/2017	14:16:16	447	6.5	13.39	488.5				
03/21/2017	14:17:16	443	6.5	13.41	494.9				
03/21/2017	14:18:16	634	6.4	13.46	501.4				
03/21/2017	14:19:16	687	6.4	13.59	507.8				
03/21/2017	14:20:16	607	6.4	13.48	514.2				
03/21/2017	14:21:16	576	6.4	13.38	520.6				
03/21/2017	14:22:16	587	6.4	13.56	527.0				
03/21/2017	14:23:16	649	6.4	13.53	533.4				

Well Hopper State 9N-34SLHZ			Field Wattenberg	Job Start Mar/21/2017		Customer Anadarko		Job Number DMBW-00776
Date	Time 24-hr clock	Treating Pressure PSI	Flow Rate B/M	Density LB/G	Volume BBL	Message		
03/21/2017	14:25:16	691	6.4	13.52	546.3			
03/21/2017	14:26:16	1280	8.3	13.54	553.6			
03/21/2017	14:27:16	1187	8.3	13.57	561.9			
03/21/2017	14:28:16	1214	8.3	13.59	570.2			
03/21/2017	14:29:16	1116	8.3	13.57	578.5			
03/21/2017	14:30:16	1110	8.3	13.56	586.8			
03/21/2017	14:31:16	1336	8.3	13.56	595.0			
03/21/2017	14:32:16	1272	8.3	13.56	603.3			
03/21/2017	14:33:16	1265	8.3	13.55	611.6			
03/21/2017	14:34:16	1295	8.3	13.57	619.8			
03/21/2017	14:35:16	1287	8.3	13.57	628.1			
03/21/2017	14:36:16	1266	8.3	13.58	636.4			
03/21/2017	14:37:16	1292	8.3	13.59	644.6			
03/21/2017	14:38:16	1268	8.3	13.61	652.9			
03/21/2017	14:39:16	1271	8.3	13.57	661.2			
03/21/2017	14:40:16	1271	8.3	13.55	669.5			
03/21/2017	14:41:16	1247	8.3	13.54	677.7			
03/21/2017	14:42:16	1250	8.3	13.53	686.0			
03/21/2017	14:43:16	1259	8.3	13.54	694.3			
03/21/2017	14:44:16	1255	8.3	13.47	702.6			
03/21/2017	14:44:39	1255	8.3	13.48	705.8	Good Returns		
03/21/2017	14:45:16	1249	8.3	13.52	710.9			
03/21/2017	14:46:16	1271	8.3	13.54	719.2			
03/21/2017	14:47:16	1271	8.3	13.55	727.5			
03/21/2017	14:48:16	925	6.6	13.50	735.8			
03/21/2017	14:49:16	284	4.5	13.43	741.9			
03/21/2017	14:50:16	264	4.6	13.36	746.4			
03/21/2017	14:51:16	267	4.6	13.40	751.0			
03/21/2017	14:52:16	658	6.4	13.45	756.2			
03/21/2017	14:53:16	737	6.4	13.48	762.6			
03/21/2017	14:54:16	743	6.4	13.45	769.0			
03/21/2017	14:55:16	794	6.4	13.44	775.4			
03/21/2017	14:56:16	777	6.4	13.63	781.8			
03/21/2017	14:57:16	772	6.4	13.57	788.2			
03/21/2017	14:58:16	772	6.4	13.57	794.6			
03/21/2017	14:59:16	767	6.4	13.57	801.0			
03/21/2017	15:00:16	767	6.4	13.55	807.5			
03/21/2017	15:01:16	758	6.4	13.42	813.9			
03/21/2017	15:02:16	769	6.5	13.38	820.3			
03/21/2017	15:03:16	783	6.4	13.41	826.8			
03/21/2017	15:04:16	795	6.4	13.52	833.2			
03/21/2017	15:05:16	1294	8.3	13.57	840.4			
03/21/2017	15:06:16	1315	8.3	13.59	848.6			
03/21/2017	15:07:16	1321	8.3	13.56	856.9			
03/21/2017	15:08:16	1318	8.3	13.56	865.2			
03/21/2017	15:09:16	1328	8.3	13.57	873.4			
03/21/2017	15:10:16	1331	8.3	13.59	881.7			
03/21/2017	15:11:16	1326	8.3	13.58	890.0			
03/21/2017	15:12:16	1317	8.3	13.56	898.2			
03/21/2017	15:13:16	1323	8.3	13.55	906.5			
03/21/2017	15:14:16	1330	8.2	13.60	914.8			
03/21/2017	15:15:16	1305	8.3	13.45	923.0			
03/21/2017	15:16:16	1321	8.3	13.47	931.3			
03/21/2017	15:17:16	1313	8.2	13.47	939.6			

Well			Field		Job Start		Customer		Job Number	
Hopper State 9N-34SLHZ			Wattenberg		Mar/21/2017		Anadarko		DMBW-00776	
Date	Time 24-hr clock	Treating Pressure PSI	Flow Rate B/M	Density LB/G	Volume BBL	Message				
03/21/2017	15:19:16	1335	8.3	13.54	956.1					
03/21/2017	15:20:16	1353	8.2	13.64	964.3					
03/21/2017	15:21:16	1322	8.3	13.49	972.6					
03/21/2017	15:22:16	328	4.5	13.49	978.0					
03/21/2017	15:23:16	316	4.5	13.47	982.5					
03/21/2017	15:24:16	343	4.5	13.51	987.0					
03/21/2017	15:25:16	298	4.6	13.25	991.6					
03/21/2017	15:26:16	282	4.6	12.85	996.1					
03/21/2017	15:27:16	326	4.5	13.35	1000.7					
03/21/2017	15:28:10	100	2.1	13.16	1004.5	End Tail Slurry				
03/21/2017	15:28:11	100	2.1	13.16	1004.5	Reset Total, Vol = 691.47 bbl				
03/21/2017	15:28:16	97	2.1	13.16	1004.7					
03/21/2017	15:29:16	99	2.1	13.15	1006.8					
03/21/2017	15:30:16	39	0.0	13.31	1007.1					
03/21/2017	15:31:16	152	2.3	13.11	1007.8					
03/21/2017	15:32:16	344	4.2	13.10	1011.3					
03/21/2017	15:32:54	307	4.2	12.71	1013.9	Washup Pump and Line				
03/21/2017	15:33:16	295	4.0	12.84	1015.5					
03/21/2017	15:34:16	72	0.0	2.82	1019.0					
03/21/2017	15:35:16	78	0.0	7.38	1020.7					
03/21/2017	15:36:16	51	0.4	8.07	1020.7					
03/21/2017	15:37:16	89	4.1	8.74	1021.7					
03/21/2017	15:38:16	54	0.0	6.08	1024.3					
03/21/2017	15:39:16	72	0.0	7.21	1024.3					
03/21/2017	15:40:16	68	0.0	0.34	1025.2					
03/21/2017	15:41:16	76	0.0	0.05	1027.9					
03/21/2017	15:42:16	193	0.0	0.04	1027.9					
03/21/2017	15:43:16	77	0.0	0.04	1027.9					
03/21/2017	15:44:16	207	4.4	8.93	1031.8					
03/21/2017	15:45:16	69	0.0	11.25	1032.8					
03/21/2017	15:46:16	314	5.6	8.42	1036.2					
03/21/2017	15:47:16	311	5.6	8.38	1038.8					
03/21/2017	15:48:16	58	0.0	8.38	1041.9					
03/21/2017	15:48:57	62	0.0	8.37	1041.9	Drop Top Plug				
03/21/2017	15:48:58	62	0.0	8.37	1041.9	Start Displacement				
03/21/2017	15:49:16	63	0.0	8.37	1041.9					
03/21/2017	15:50:16	85	1.8	8.38	1042.7					
03/21/2017	15:51:16	146	4.6	8.40	1046.2					
03/21/2017	15:52:16	328	8.4	8.40	1053.4					
03/21/2017	15:52:59	334	8.4	8.41	1059.4	40 Bbl Sugar Water				
03/21/2017	15:53:01	333	8.4	8.41	1059.7	Biocide and Clay Stabilizer in Remainder				
03/21/2017	15:53:16	332	8.4	8.41	1061.8					
03/21/2017	15:54:16	1500	8.0	8.41	1070.1					
03/21/2017	15:55:16	1414	7.5	8.41	1077.6					
03/21/2017	15:56:16	1456	7.5	8.41	1085.1					
03/21/2017	15:57:16	1543	7.5	8.38	1092.6					
03/21/2017	15:58:16	1604	7.5	8.37	1100.0					
03/21/2017	15:59:16	1711	7.5	8.37	1107.5					
03/21/2017	16:00:16	1767	7.4	8.38	1115.0					
03/21/2017	16:01:16	1875	7.4	8.37	1122.4					
03/21/2017	16:02:16	1966	7.4	8.38	1129.9					
03/21/2017	16:03:16	2048	7.4	8.37	1137.3					
03/21/2017	16:04:16	2154	7.4	8.37	1144.8					
03/21/2017	16:05:16	2237	7.4	8.38	1152.2					

Well			Field	Job Start		Customer		Job Number	
Hopper State 9N-34SLHZ			Wattenberg		Mar/21/2017		Anadarko		DMBW-00776
Date	Time 24-hr clock	Treating Pressure PSI	Flow Rate B/M	Density LB/G	Volume BBL	Message			
03/21/2017	16:07:16	2423	7.5	8.38	1167.1				
03/21/2017	16:08:16	2538	7.5	8.38	1174.6				
03/21/2017	16:09:16	2633	7.5	8.37	1182.1				
03/21/2017	16:10:16	2726	7.5	8.37	1189.6				
03/21/2017	16:11:16	2822	7.5	8.37	1197.1				
03/21/2017	16:12:16	2623	6.3	8.37	1203.5				
03/21/2017	16:13:16	2693	6.3	8.37	1209.7				
03/21/2017	16:14:16	2679	6.3	8.37	1216.0				
03/21/2017	16:15:16	2685	6.3	8.37	1222.3				
03/21/2017	16:16:16	2696	6.3	8.37	1228.5				
03/21/2017	16:17:16	2748	6.3	8.37	1234.8				
03/21/2017	16:18:16	2770	6.3	8.37	1241.1				
03/21/2017	16:19:16	2813	6.3	8.37	1247.3				
03/21/2017	16:20:16	2820	6.3	8.37	1253.6				
03/21/2017	16:21:16	2773	6.3	8.37	1259.8				
03/21/2017	16:22:16	2789	6.3	8.37	1266.1				
03/21/2017	16:23:16	2827	6.3	8.38	1272.4				
03/21/2017	16:24:16	2848	6.3	8.37	1278.6				
03/21/2017	16:25:16	2810	6.3	8.37	1284.9				
03/21/2017	16:25:35	2869	6.3	8.37	1286.9	Good Returns			
03/21/2017	16:26:16	2887	6.3	8.37	1291.2				
03/21/2017	16:27:16	2907	6.2	8.38	1297.4				
03/21/2017	16:28:16	2847	6.3	8.37	1303.7				
03/21/2017	16:29:16	2909	6.3	8.38	1309.9				
03/21/2017	16:30:16	2919	6.3	8.37	1316.2				
03/21/2017	16:31:16	2927	6.2	8.37	1322.4				
03/21/2017	16:32:16	2960	6.3	8.38	1328.7				
03/21/2017	16:33:16	2962	6.2	8.38	1334.9				
03/21/2017	16:34:16	2972	6.3	8.38	1341.2				
03/21/2017	16:35:16	2970	6.3	8.37	1347.4				
03/21/2017	16:36:16	3005	6.3	8.37	1353.7				
03/21/2017	16:37:16	3008	6.3	8.37	1359.9				
03/21/2017	16:38:16	3036	6.3	8.37	1366.2				
03/21/2017	16:39:16	2978	6.3	8.37	1372.4				
03/21/2017	16:40:16	2988	6.2	8.37	1378.7				
03/21/2017	16:41:16	3021	6.3	8.37	1384.9				
03/21/2017	16:42:16	3020	6.2	8.38	1391.2				
03/21/2017	16:43:16	2999	6.3	8.37	1397.4				
03/21/2017	16:44:16	3007	6.2	8.38	1403.7				
03/21/2017	16:45:16	3007	6.2	8.37	1409.9				
03/21/2017	16:46:16	3007	6.2	8.37	1416.2				
03/21/2017	16:47:16	2994	6.2	8.37	1422.4				
03/21/2017	16:48:16	2993	6.3	8.37	1428.7				
03/21/2017	16:49:16	3013	6.2	8.37	1434.9				
03/21/2017	16:50:16	3032	6.2	8.37	1441.2				
03/21/2017	16:51:16	3034	6.2	8.37	1447.4				
03/21/2017	16:52:16	3088	6.2	8.37	1453.7				
03/21/2017	16:53:16	3013	6.2	8.37	1459.9				
03/21/2017	16:54:16	3023	6.3	8.37	1466.1				
03/21/2017	16:55:16	3051	6.2	8.37	1472.4				
03/21/2017	16:56:16	3066	6.3	8.37	1478.6				
03/21/2017	16:57:16	3060	6.3	8.37	1484.9				
03/21/2017	16:58:16	2875	5.4	8.37	1490.5				
03/21/2017	16:59:16	2897	5.4	8.37	1495.9				



Well			Field		Job Start		Customer		Job Number	
Hopper State 9N-34SLHZ			Wattenberg		Mar/21/2017		Anadarko		DMBW-00776	
Date	Time 24-hr clock	Treating Pressure PSI	Flow Rate B/M	Density LB/G	Volume BBL	Message				
03/21/2017	17:01:16	2892	5.4	8.37	1506.6					
03/21/2017	17:02:16	2893	5.4	8.37	1512.0					
03/21/2017	17:03:16	2783	4.8	8.37	1517.4					
03/21/2017	17:04:16	2608	3.0	8.37	1521.1					
03/21/2017	17:05:16	2529	3.0	8.37	1524.1					
03/21/2017	17:06:16	2508	3.0	8.37	1527.1					
03/21/2017	17:07:16	2401	2.2	8.37	1529.5					
03/21/2017	17:07:48	2410	2.2	8.37	1530.7	60 Bbl Spacer to Surface				
03/21/2017	17:08:16	2407	2.2	8.37	1531.7					
03/21/2017	17:09:16	2931	0.0	8.37	1532.8					
03/21/2017	17:09:50	2935	0.0	8.37	1532.8	Bump Top Plug 2400-3000psi				
03/21/2017	17:09:51	2935	0.0	8.37	1532.8	End Displacement				
03/21/2017	17:09:52	2938	0.0	8.37	1532.8	Reset Total, Vol = 488.4 bbl				
03/21/2017	17:09:53	2940	0.0	8.37	1532.8	Start 15 min, 3000 psi Casing Test				
03/21/2017	17:10:16	2949	0.0	8.37	1532.8					
03/21/2017	17:11:16	2994	0.0	8.37	1532.8					
03/21/2017	17:12:16	2990	0.0	8.38	1532.8					
03/21/2017	17:13:16	3022	0.0	8.38	1532.8					
03/21/2017	17:14:16	3034	0.0	8.38	1532.8					
03/21/2017	17:15:16	3058	0.0	8.38	1532.8					
03/21/2017	17:16:16	3076	0.0	8.38	1532.8					
03/21/2017	17:17:16	3091	0.0	8.38	1532.8					
03/21/2017	17:18:16	3110	0.0	8.38	1532.8					
03/21/2017	17:19:16	3125	0.0	8.38	1532.8					
03/21/2017	17:20:16	3142	0.0	8.38	1532.8					
03/21/2017	17:21:16	3157	0.0	8.38	1532.8					
03/21/2017	17:22:16	3172	0.0	8.38	1532.8					
03/21/2017	17:23:16	3187	0.0	8.38	1532.8					
03/21/2017	17:24:16	3202	0.0	8.38	1532.8					
03/21/2017	17:25:16	3216	0.0	8.38	1532.8					
03/21/2017	17:25:18	3218	0.0	8.38	1532.8	End Casing Test				
03/21/2017	17:27:16	3886	0.0	8.37	1533.8					
03/21/2017	17:28:16	4466	0.8	8.37	1534.6					
03/21/2017	17:28:37	2513	0.9	8.37	1534.9	Open Shoe Track, 4500 psi				
03/21/2017	17:29:02	2412	2.2	8.37	1535.6	Pump 5 Bbl Wet Shoe				
03/21/2017	17:29:16	2442	2.2	8.37	1536.1					
03/21/2017	17:30:16	2429	2.2	8.37	1538.2					
03/21/2017	17:31:11	2312	1.6	8.37	1540.2	Reset Total, Vol = 5 bbl				
03/21/2017	17:31:16	2257	0.0	8.37	1540.3					
03/21/2017	17:32:16	1814	0.0	8.37	1540.3					
03/21/2017	17:32:29	1086	0.0	8.37	1540.3	Bleed Off Pressure				
03/21/2017	17:32:56	64	0.0	8.37	1540.3	Floats Hold, 3.5 Bbl Back				
03/21/2017	17:33:00	63	0.0	8.37	1540.3	End Job				

<b>Well</b> Hopper State 9N-34SLHZ	<b>Field</b> Wattenberg	<b>Job Start</b> Mar/21/2017	<b>Customer</b> Anadarko	<b>Job Number</b> DMBW-00776
---------------------------------------	----------------------------	---------------------------------	-----------------------------	---------------------------------

Post Job Summary

Average Pump Rates, bbl/min					Volume of Fluid Injected, bbl				
Slurry 6.3	N2	Mud 0.0	Maximum Rate 20.0		Total Slurry 911.0	Mud 0.0	Spacer 81.0	N2	
Treating Pressure Summary, psi					Breakdown Fluid				
Maximum 4539	Final 65	Average 1578	Bump Plug to 3000	Breakdown	Type		Volume bbl		Density lb/gal
Avg. N2 Percent %		Designed Slurry Volume 905.0 bbl		Displacement 488.4 bbl		Mix Water Temp 69 degF		Cement Circulated to Surface? <input type="checkbox"/>	Volume bbl
								Washed Thru Perfs <input type="checkbox"/>	To ft
Customer or Authorized Representative Tobin Sinclair				Schlumberger Supervisor Ryan Drilling/Ken Sovereign				Circulation Lost <input type="checkbox"/>	Job Completed <input checked="" type="checkbox"/>
								-	-