



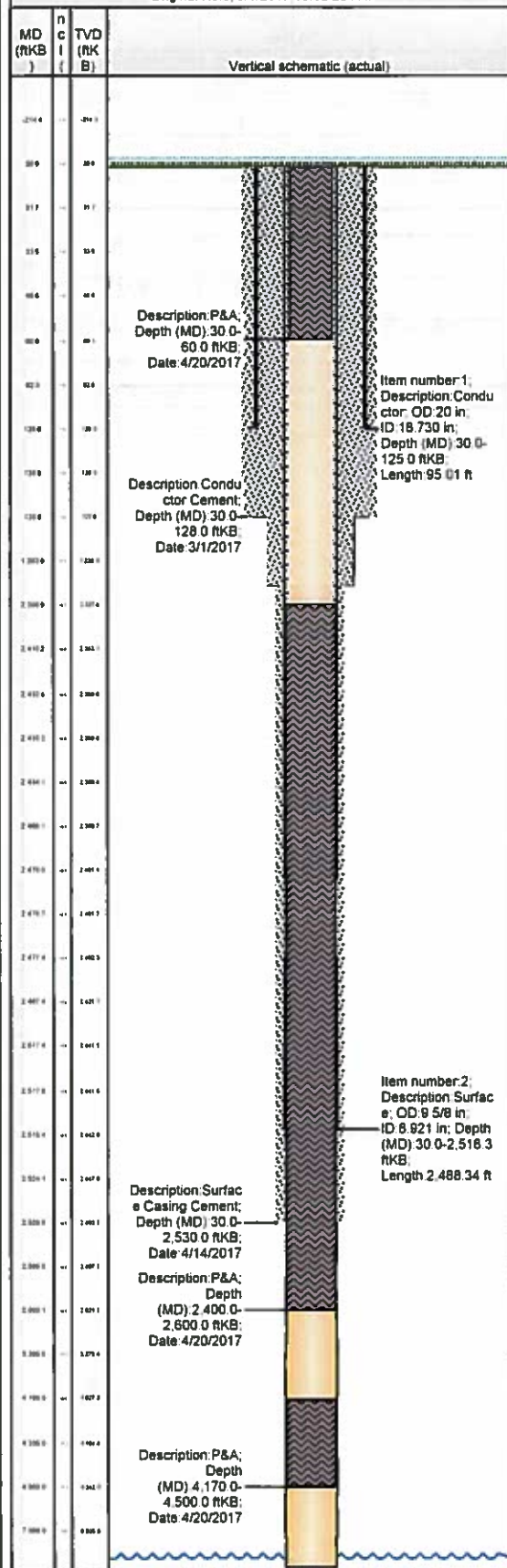
# Casing, Liner and Cement report

Surface

Well Name: Puckett 25C-23

API/UVI 05045233650000	Surface Legal Location NW 1/4 NE 1/4, SECTION 26, T8S, R97W	Field Name Grand Valley	License #	State/Province CO	Well Configuration Type
Ground Elevation (ft) 8,396.00	Casing Flange Elevation (ft)	KB-Ground Distance (ft) 30.00	KB-Casing Flange Distance (ft)	Spud Date 4/12/2017 15:30	Rig Release Date 4/21/2017 15:30

Original Hole, 5/1/2017 10:02:20 AM



## Wellbore

Wellbore Name Original Hole	Profile Type	Kick Off Depth (ftKB)	Vertical Section Direction (°)
Section Des	Size (in)	Act Top (ftKB)	Act Btm (ftKB)
Conductor	20	30.0	128.0
Surface	14 3/4	128.0	1,870.0
Production	8 3/4	1,870.0	4,870.0
Production	8 3/4	4,870.0	7,484.0
Production	8 3/4	7,484.0	9,161.0

## Wellhead

Type	Des	Make	Model	SN	WP Top (psi)

## Last Mud Check

Date	Type	Depth (ftKB)	Dens (lb/gal)	Vis (s/qt)	Gel (10s) (lb/100ft²)	Gel (10m) (lb/100ft²)	PV OR (cP)	YP OR (lb/100ft²)
4/12/2017	Water Base	1,606.0	9.30	73	6.000	12.000	25.0	20.000
4/13/2017	Water Base	2,530.0	9.40	50	5.000	12.000	17.0	16.000

## Casing

Casing Description Surface				Run Date 4/13/2017 13:00		Set Depth (ftKB) 2,518.3		Wellbore Original Hole	
Centralizers					Scratchers				
Jts	Item Des	OD (in)	ID (in)	Wt (lb/ft)	Grade	Len (ft)	Top (ftKB)	Btm (ftKB)	
0	Casing Joints	9 5/8	8.921	36.00	J-55	0.00	30.0	30.0	
0	Landing Joint	9 5/8	8.921	36.00	J-55	0.00	30.0	30.0	
1	Pup Joint	9 5/8	8.921	36.00	J-55	3.50	30.0	33.5	
57	Casing Joints	9 5/8	8.921	36.00	J-55	2,398.82	33.5	2,432.3	
1	Air injection collar	9 5/8	8.921	36.00	J-55	1.75	2,432.3	2,434.0	
1	Casing Joints	9 5/8	8.921	36.00	J-55	42.16	2,434.0	2,476.2	
1	Float Collar	9 5/8	8.921	36.00	J-55	1.25	2,476.2	2,477.4	
1	Casing Joints	9 5/8	8.921	36.00	J-55	39.91	2,477.4	2,517.4	
1	Float Shoe	9 5/8	8.921	36.00	J-55	0.95	2,517.4	2,518.3	

## Cement: Surface Casing Cement

Cementing Start Date 4/14/2017	Cementing End Date 4/14/2017	Wellbore Original Hole
Evaluation Method	Cement Evaluation Results	
Comment		

## Cement Stage: Surface Casing Cement

Top Depth (ftKB) 30.0	Bottom Depth (ftKB) 2,530.0	Full Return? No	Vol Ceme ..	Top Plug? No	Bottom Plug? No
Q Pump Init (bbl/min) 5	Q Pump Final (bbl/min) 2	Avg Pump Rate (bbl/min)	Final Pump Pressure (psi)	Plug Bump Pressure (psi)	
Pipe Reciprocated? No	Stroke (ft)	Reciprocation Rate (spm)	Pipe Rotated? No	Pipe RPM (rpm)	
Tagged Depth (ftKB)	Tag Method	Depth Plug Drilled Out...	Drill Out Diameter (in)	Drill Out Date	

## Cement Fluid: Surface Casing Cement

Fluid Type Lead	Fluid Description	Amount (s...) 703	Class G	Volume Pumped (bbl) 317.0
Estimated Top (ftKB) 30.0	Est Btm (ftKB) 1,949.0	Yield (ft³/sack) 2.53	Mix H2O Ratio (gal/sack) 14.85	Free Water (%)
Density (lb/gal) 12.00	Plastic Viscosity (cP)	Thickening Time (hr)	1st Compressive Strength (psi)	

## Cement Fluid Additives

Add	Type	Conc



## Schematic - Current

Well Name: Puckett 25C-23

API/UVI 05045233650000	Surface Legal Location NW 1/4 NE 1/4, SECTION 26, T6S, R97W	Field Name Grand Valley	License #	State/Province CO	Well Configuration Type
Original KB Elevation (ft) 8,426.00	KB-Tubing Head Distance (ft)	Spud Date 4/12/2017 15:30	Rig Release Date 4/21/2017 15:30	PBTD (All) (ftKB)	Total Depth All (TVD) (ftKB)

### Most Recent Job

Job Category Drill, Complete and Equip	Primary Job Type Drill, Complete and Equip	Secondary Job Type	Start Date 4/12/2017	End Date 4/13/2017
---	---	--------------------	-------------------------	-----------------------

TD: 9,161.0

Original Hole, 5/1/2017 9:51:44 AM

