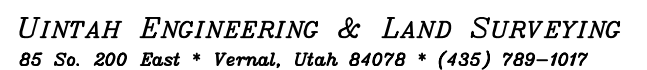


**FIGURE #1**

SCALE: 1" = 50'  
DATE: 10-02-13  
DRAWN BY: M.D.  
REV: 4 04-26-17 M.D.  
(MOVE & PAD EXPANSION)

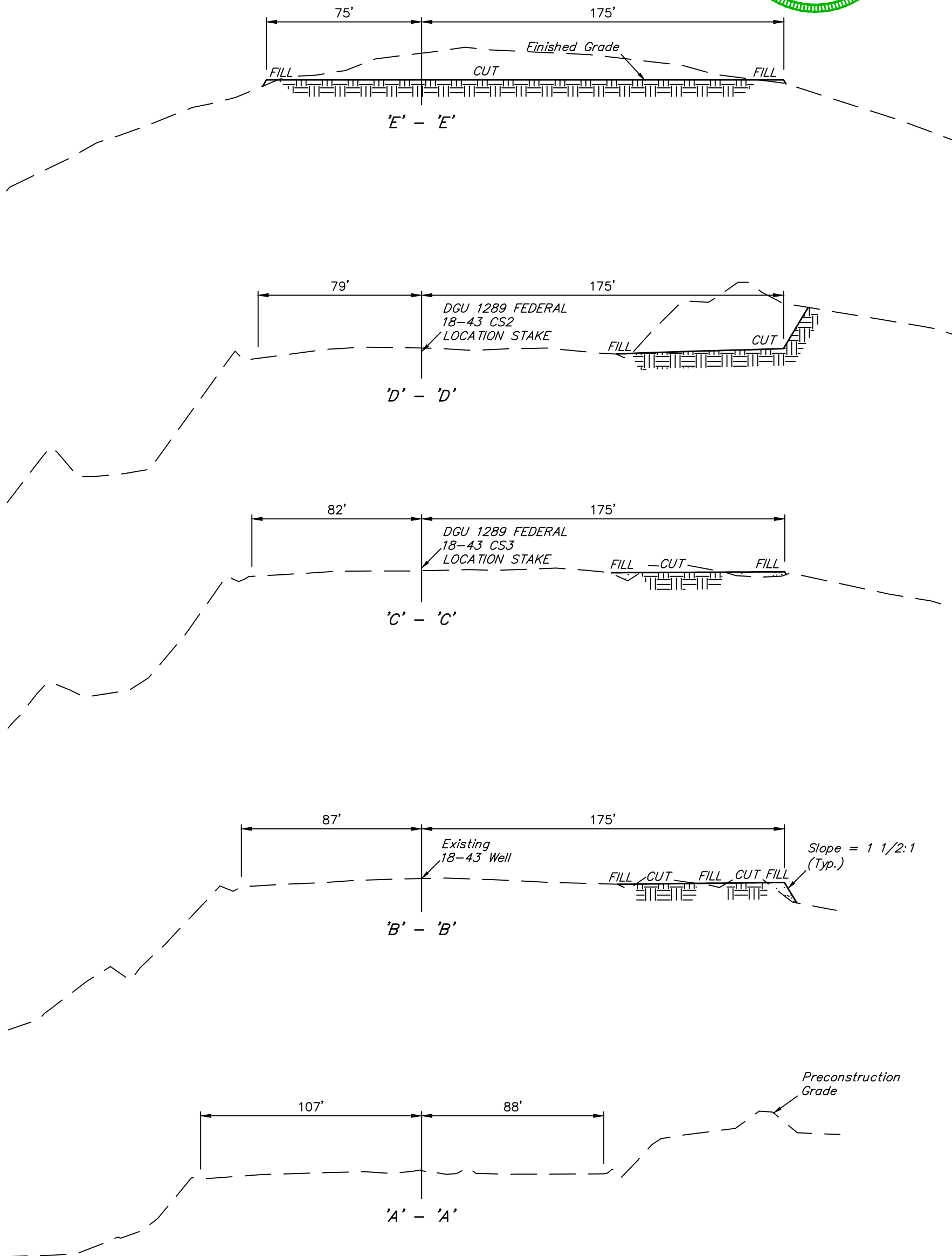


UINTAH ENGINEERING & LAND SURVEYING  
85 So. 200 East \* Vernal, Utah 84078 \* (435) 789-1017

1" = 20'  
X-Section  
Scale  
1" = 50'  
DATE: 12-13-13  
DRAWN BY: M.D.  
REV: 2 04-26-17 M.D.  
(PAD EXPANSION)

GUNNISON ENERGY CORPORATION  
CONSTRUCTION LAYOUT CROSS SECTIONS FOR  
DGU 1289 FEDERAL 18-43 PAD  
NE 1/4 SE 1/4, SECTION 18, T12S, R89W, 6th P.M.  
GUNNISON COUNTY, COLORADO

FIGURE #2

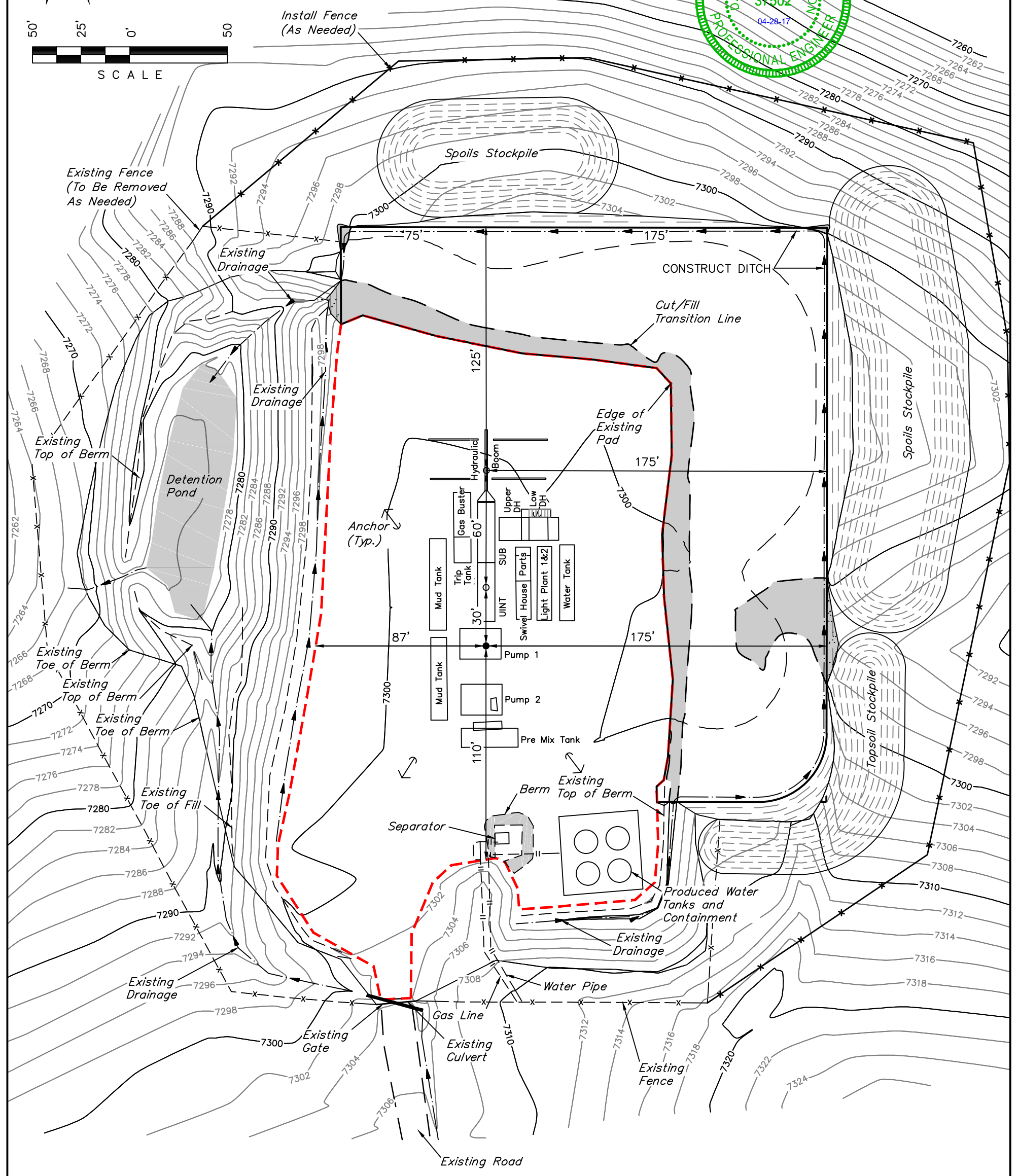
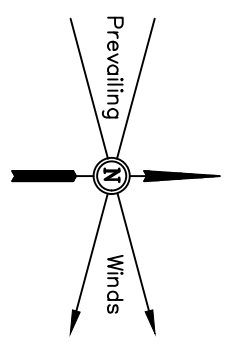


| APPROXIMATE EARTHWORK QUANTITIES                          |                       |
|---|-----------------------|
| (6") TOPSOIL STRIPPING<br>(NEW CONSTRUCTION ONLY)         | 500 Cu. Yds.          |
| REMAINING LOCATION  | 6,460 Cu. Yds.        |
| <b>TOTAL CUT</b>  | <b>6,960 Cu. Yds.</b> |
| <b>FILL</b>   | <b>210 Cu. Yds.</b>   |
| EXCESS MATERIAL   | 6,750 Cu. Yds.        |
| TOPSOIL   | 500 Cu. Yds.          |
| <b>EXCESS UNBALANCE</b><br>(After Interim Rehabilitation) | <b>6,250 Cu. Yds.</b> |

| APPROXIMATE SURFACE DISTURBANCE AREAS |          |               |
|---------------------------------------|----------|---------------|
|                                       | DISTANCE | ACRES         |
| WELL SITE DISTURBANCE (FENCED AREA)   | NA       | ±4.531        |
| <b>TOTAL SURFACE USE AREA</b>         |          | <b>±4.531</b> |

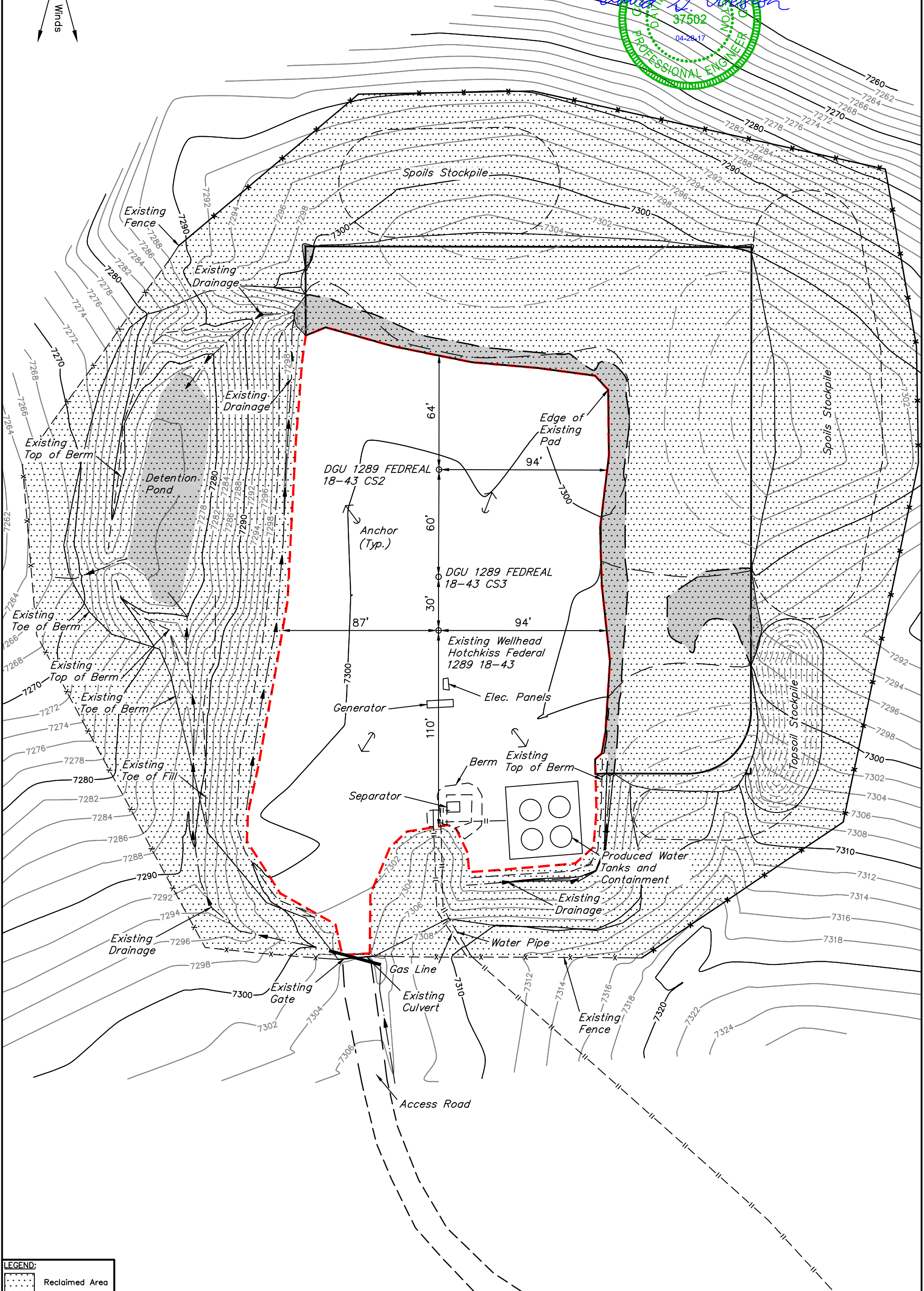
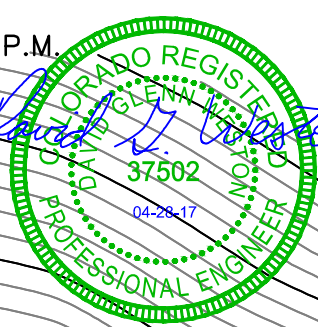
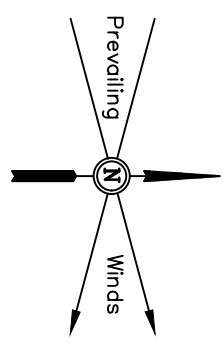
GUNNISON ENERGY CORPORATION  
TYPICAL RIG LAYOUT FOR  
DGU 1289 FEDERAL 18-43 PAD  
NE 1/4 SE 1/4, SECTION 18, T12S, R89W, 6th P.M.  
GUNNISON COUNTY, COLORADO

FIGURE #3  
SCALE: 1" = 50'  
DATE: 12-13-13  
DRAWN BY: M.D.  
REV: 3 04-26-17 M.D.  
(PAD EXPANSION)



GUNNISON ENERGY CORPORATION  
RECLAMATION DIAGRAM FOR  
DGU 1289 FEDERAL 18-43 PAD  
NE 1/4 SE 1/4, SECTION 18, T12S, R89W, 6th P.M.  
GUNNISON COUNTY, COLORADO

FIGURE #4  
SCALE: 1" = 50'  
DATE: 12-13-13  
DRAWN BY: M.D.  
REV: 2 04-26-17 M.D.  
(PAD EXPANSION)



LEGEND:  
Reclaimed Area

APPROXIMATE UN-RECLAIMED ACREAGE = ±1.213 ACRES  
APPROXIMATE RECLAIMED ACREAGE = ±3.318 ACRES  
TOTAL ACREAGE = ±4.531 ACRES



UINTAH ENGINEERING & LAND SURVEYING  
85 So. 200 East \* Vernal, Utah 84078 \* (435) 789-1017